



Beeck Mineral Paints

Select Range

12 Colour Internal and External Stock Range



Beeck.com | info@beeck.co.uk

Select Range

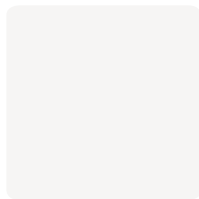
The Beeck Select Range offers our 12 most popular colours for both internal and external use.

The full Beeck colour range is extensive and due to its size; colours are hand mixed to order which can be time-consuming and expensive. These 12 most sought after colours are bulk mixed, readily available in 100ml sample pots, 5L and 12.5L tubs and offered at more competitive prices.

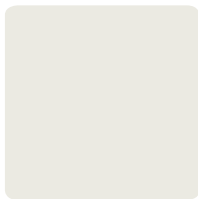
The full Beeck range consists of a wide number of products and colours, which are available to order. For information on the range, please see the Beeck brochure.

Colours

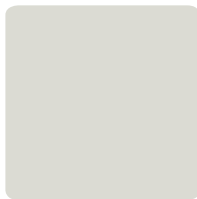
These colours are for indication purposes only. Sample Pots (100ml) are available for accurate colour representation.



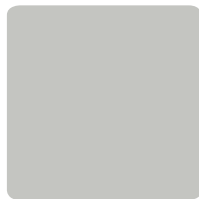
White



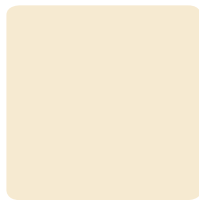
Off White



Pearl Grey



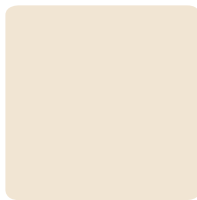
Steel



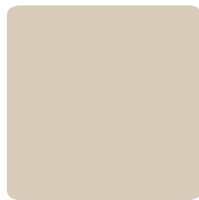
Magnolia



Vanilla



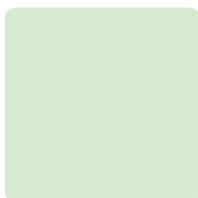
Straw



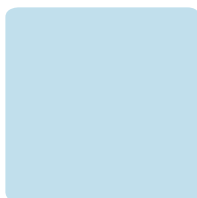
Mortar



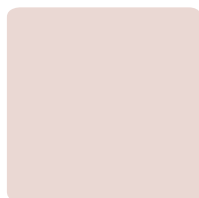
Peach



Mint



Sky Blue



Macie's Room

External Mineral Paint



Our Select Range for external use is based on Beeck Renosil - a general purpose, hard wearing, long lasting and highly vapour permeable mineral paint. Renosil can be applied over lime and cement render, mineral backgrounds such as stone and brick and over existing modern coatings.

When applying Renosil onto a mineral background such as a cement or lime render, we recommend the surface is first treated with Mineral Cleaner (Etching Fluid) and then primed with the Beeck Mineral Primer (Fixative).

Other sizes and colours are available and other external Beeck Mineral Coatings within the range include Beeckosil - an advanced paint offering an extremely strong chemical bond (ASF™) to lime renders and SP Plus - a clear water repelling treatment for bare stone.

Internal Mineral Paint



Our Select Range for internal use is based on Beeck Maxol - A ready to use, hard wearing, long lasting and highly vapour permeable mineral paint. Maxol can be applied over lime, cement, gypsum plaster, mineral backgrounds such as stone and brick and over sound and well adhered existing paints.

When applying Maxol onto a mineral background such as a lime plaster we recommend the surface is first primed with the Beeck Mineral Primer (Fixative). If applying directly onto bare plasterboard, the surface first needs to be primed with Beeck Gypsum Primer.

Other sizes and colours are available and other internal Beeck Mineral Paints within the range include Beeck Insil - a less hard wearing mineral paint.



BEECK

mineral without compromise

Beeck have been manufacturing mineral silicate paints for over 120 years. Unlike modern coatings which form a film over the substrate, Beeck coatings form a direct and inseparable chemical bond to the substrate. Due to this chemical bond a highly stable and lightfast coating is achieved. This process results in a long lasting durable finish that can be over coated numerous times, making maintenance simple, efficient and extremely economic. Beeck paints are vapour permeable making them suitable for historic as well as contemporary construction.

Please get in touch for more information on what mineral paints are and why you should use Beeck paints.

Beeck Mineral Paints - Mineral Without Compromise

info@beeck.co.uk | beeck.com