

Product Description:

Seamless Aluminum Groups Standing seam systems are designed and manufactured to provide the essential architectural features appropriate to any building design. A sustainable pre-painted Aluminium roofing and cladding system designed for the residential and commercial market. Standing seam can be mounted vertically or horizontally.

Manufactured on site in Ballyshannon, Co Donegal in marine grade Aluminium to ensure its high quality.

As we manufacture all our Standing seam systems and accessories in our state of the art manufacturing plant we can accommodate any special requirements you may have in relation to length, colour, special angles or brackets etc.

Physical Properties	
Material	Manufactured from coil Aluminium to EN 15088:2005 485 1396 Grade EN AW-1050A H14 Supplied by Registered Stockiest.
Finish	Coil Produced to EN12206-1
Sizes Available	Up to 3.2 meters long 70mm to 450mm wide Gauge: 0.7mm
Life expectancy	40 years or more

Standard RAL Colour Options:

RAL 9016 Traffic white	RAL 9005 Jet black	RAL 7015 Slate grey	RAL 7016 Anthracite grey

SaluZinc™ Colour Options:

RAL 7030 Zink Grey	RAL 7031 Blue grey	RAL 7005 Light Grey	RAL 7016 7016

Our polyester powder coated range of RAL colours have a Matt finish and are available as standard colours unless alternative requested.

Durability/Performance:

Aluminium roofing and cladding offers an excellent level of durability and have a low maintenance life in excess of 40 years in rural and suburban conditions and in excess of 25 years in industrial and marine conditions. The system provides an original and modern roofline for any property. Compatibly with pitched roofs as low as 3°.

Fire Rating:

Non Combustible to EN13501-1:2007 + A1:2009
Coefficient for thermal expansion - 0.000023°C
Do not aid combustion
Melting point approximately 660°C

Standards:

All Seamless Aluminium Groups systems are manufactured under the ISO 9001 - 2015 quality management standards.

Key Benefits:

- ⇒ Quick fit system reduces installation time on site.
- ⇒ Can be installed on a roof with a pitch as low as 3°.
- ⇒ Several times lighter than traditional roof tiles.
- ⇒ Extremely flexible and easy to work with.
- ⇒ Can tolerate high pressure.
- ⇒ Available in various lengths and widths.
- ⇒ Bespoke trims available to order.
- ⇒ Dedicated technical team available for design support.





FIXING METHOD:

Standing seam is fixed using hidden fixings which is a indirect fixing method, using clips that are hooked into the seam and screwed or nailed to the substrate below. Fixed clips can be used on the panel if it is under 1.5meters. All panels of 1.5meters and up must have at least 5 fixed clips that does not allow thermal expansion, sliding fixing clips to be used in conjunction with fixed clips after 1.5meters. It is recommended to space clips at 330mm centres reducing this to 200mm at roof edges, eaves and ridges.

Sliding clips ensure movement can be achieved this is to combat the thermal movement of the panel along it length, there is no requirement for thermal movement on the width of the panel due to the panel make up. It is the responsibility of the architect to determine the wind loading of the building in accordance with applicable national standard.

The normal zone for fixed clips is near the top of the roof panel. For panel lengths between 10 meters and 15 meters it is advisable to move the fixed zone down the roof panel to a more central location. For slopes exceeding 30°, maximum panel length should be 10m.

Installers:

Aluminium roofing systems can be installed by a general roofing contractor with appropriate training. Seamless Aluminium Group's standing seam is several times lighter than traditional roof tiles meaning it is easier and safer to handle on site. The quick and simple installation process not only reduces the overall build time but also minimises the amount of time spent working at height, and therefore lowers the risk to installers.

Do not use damaged goods. Alignment and tolerance of the building structure should be carried out prior to installation to ensure it is within the specification given. If not the panels may not fit. When working on the roof, soft-soled shoes must be worn. The soles should be checked for any sharp objects that could damage the panel or cause injury.

Cutting:

All panel fabrication and cutting must be completed away from the roof to eliminate the risk of transferring swarf onto the panel. All exposed edges should be deburred and protected with touch-up paint. For cut-outs, openings and cuts that are not straight use a snips or jigsaw with a fine tooth metal cutting blade. For long straight cuts the use of an angle grinder is recommended.

Handling & Storage:

Standing Seam, brackets and Accessories, particularly with polyester powder coat finish should be handled with care and should preferably be stored under a supported cover allowing air flow and stacked on a firm flat surface that is clear of the ground on timber bearers spaced no more than 900mm apart ensuring an incline is created to allow any water to run off the panels. If stacked or bundled products do become wet from storing outside, then separate and wipe dry with a clean cloth.

To prevent scratching while moving, panels should be lifted rather than dragged. Appropriate personal protective equipment should be worn to avoid injury from any sharp edges. When being moved by hand, the panels should be turned and carried on their edge to avoid warping of the panel and where possible the panels should be lifted manually onto the roof in single panels.

If panels have to be hoisted into position ensure edges are protected and that pressure across the panel is even so it does not distort it. Use only ropes and slings for hoisting, never chains. Do not drag material over the surfaces of panels. Bulk panels should be moved or lifted with a fork-lift truck with appropriate length forks. Long panels should be moved using a lifting beam with suitable slings and spreaders.

All panels, brackets and accessories are supplied in protective polythene wrapping and are suitably packed in boxes where appropriate. Inspect the panels at regular intervals to check for any leaks in the covering. Mill finish items should be stored undercover to avoid uneven oxidation prior to being fitted.



Versatility:

Standing seam roofing can be used on both residential and commercial buildings and allows a wide range of roof shapes and designs to be achieved. This includes simple modern designs such as mono-pitch and saltbox style roofs as well as more complex profiles including butterfly, clerestory and double-pitched ‘M’ shaped roofs. It is available in a range of RAL colours to suit many different applications. The additional colour options and finishes offered by our Aluminium SaluZink™ roofing range means that the look of zinc can be replicated.

Warm Roof Build-up:

Seamless Aluminium Groups Standing Seam warm roof system encompasses the essentials of modern metal roofing. The profile provides the traditional pitched detailing of a standard roof, whilst the thermal performance is provided by standard high density insulation in a tightly packed formation. This type of construction reduces thermal bridges and increases air tightness.

Cold Roof Build-up:

Seamless Aluminium Groups Standing Seam cold roof system contains all the details of a warm roof system, but has been specifically designed for use on pitched roofs, and is suitable for use within the majority of timber framed construction. Allowing an additional 50mm air cavity and optional VCL to increase air tightness, whilst introducing a foam pad insulation instead of the hard insulation incorporated into the warm roof build-up. This type of build up can be used on roofs ranging from 3° to vertical as well as soffits.

Maintenance:

In order to maintain proper working order, Standing Seam should be periodically cleaned and any built-up debris removed. Check all fixings are secure and take any remedial action to rectify if necessary. To maximise the life of the decorative paint finishes, all parts should be washed down at regular intervals and any damage repaired. Please see Cleaning and Maintenance document for detailed instructions.

Manufacturer:

Telephone: +44 (0)121 765 4355
Email: Info@seamlessaluminium.co.uk
Website: www.seamlessaluminium.co.uk
Address: Seamless Aluminium International Ltd,
Unit 6b, Solihull Building Trade Centre, Olton Wharf, Olton,
West Midlands B92 7RN.

Compatibility:

Direct Aluminium contact with dissimilar metals or with materials containing lime or cement should be avoided. The polyester coating is an insulation but different metals should be separated by nonmetallic material to prevent electrolytic corrosion. The use of Aluminium in conjunction with copper roofs, cladding or flashings should be avoided. Contact Seamless Aluminium Group for advice where heavily polluted atmospheres or marine conditions are involved for advice on material choice.

Environmental:

Seamless Aluminium Group’s manufacturing site in Donegal is focused on ensuring all environmental steps are taken when producing any product. Aluminium is a sustainable material, infinitely recyclable and responsibly sourced. Seamless Aluminium Group has introduced solar panels to its manufacturing plant to aid in the reduction of greenhouse gas emissions and lowering its carbon foot print.

Technical Support:

Technical advice is available from Seamless Aluminium Group via:

Telephone: +44 (0)121 765 4355
Email: Info@seamlessaluminium.co.uk
Website: www.seamlessaluminium.co.uk
Address: Seamless Aluminium International Ltd,
Unit 6b, Solihull Building Trade Centre, Olton Wharf, Olton,
West Midlands B92 7RN.



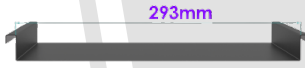
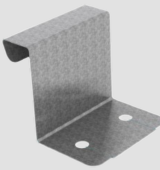

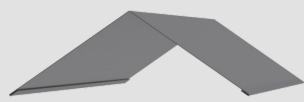
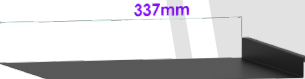
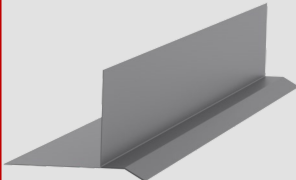

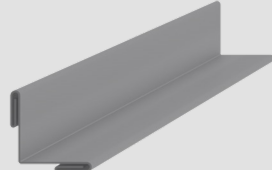
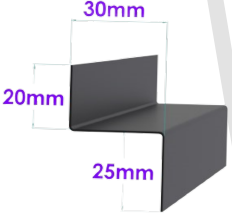
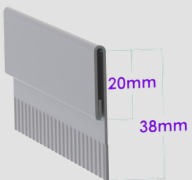
Seamless Aluminium Group pursues a policy of constant product development and information contained within this datasheet is therefore subject to change without notice. The customer is responsible for ensuring that each product is fit for its intended purpose and that the conditions for use are suitable. All quoted data is nominal and subject to production tolerances.



SEAMLESS ALUMINIUM
group

Product Data Sheet : Standing Seam

Standing Seam Parts and Accessories:

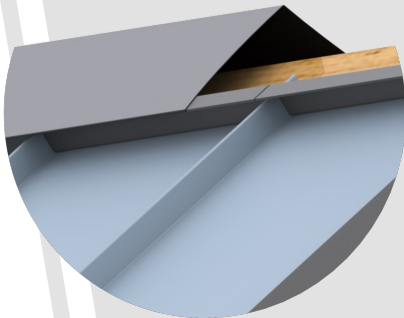
	<u>Standing Seam</u> <u>Panel type A</u>		<u>Gable End Trim</u> <u>T9</u>
	<u>Standing Seam</u> <u>Panel Type B</u>		<u>Fixing Bracket /add</u> <u>sliding</u>
	<u>Standing Seam</u> <u>Panel Type C</u>		<u>Ridge Cap T10</u>
	<u>Standing Seam</u> <u>Panel Type D</u>		<u>Base Trim T7</u> <u>T8 version included</u> <u>perforated vent.</u>
	<u>Standing Seam</u> <u>Panel Type E</u>		<u>External Corner</u> <u>Trim T3.</u>
	<u>Z Channel</u>		<u>Undercill</u>

More options available in parts document for standing seam

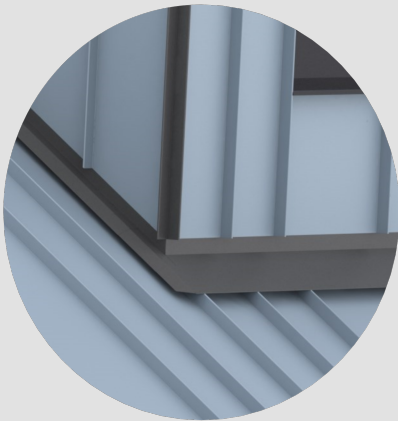


SEAMLESS ALUMINIUM
group

Product Data Sheet : Standing Seam

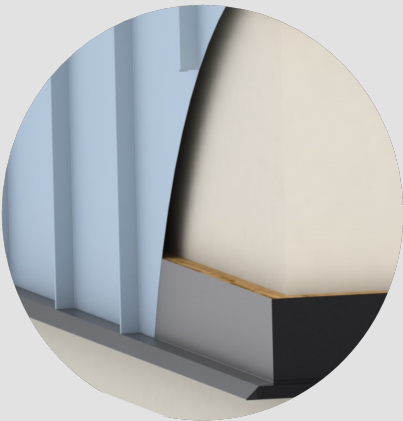


Ridge Cap T10
Z channel T5
Standing seam

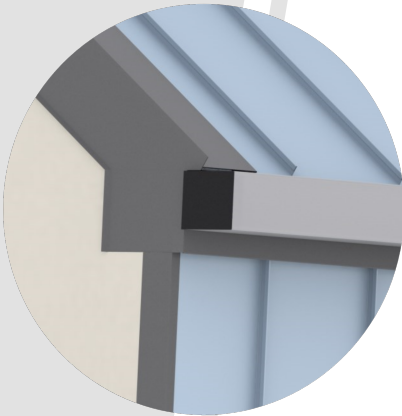


External Corner trim T3
Base Trim T7.1
Base Trim T7.5
Standing seam

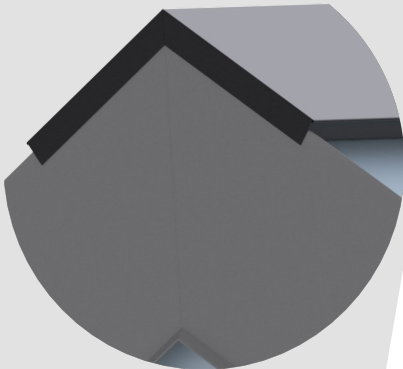
Base Trim T7/8
Standing seam



End trim T15.1
Roof Trim T6
Gable Trim T9.3
Standing seam

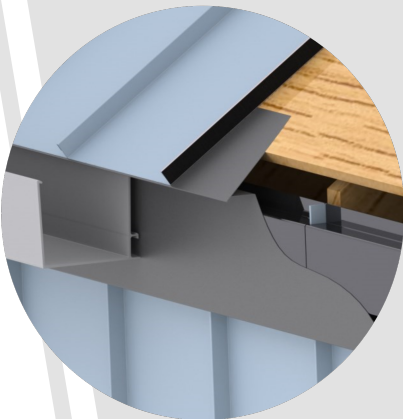


Gable Trim T9.2
End Trim T15

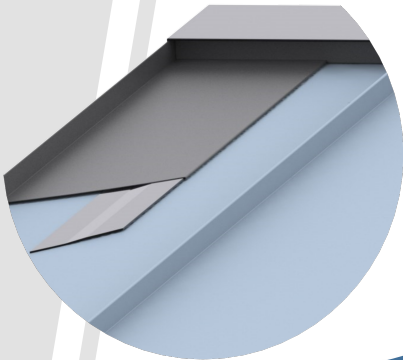


Gabe Trim T9
Ridge Cap T10

Roof Trim T6
Fascia trim T16
Standing Seam
Gutter



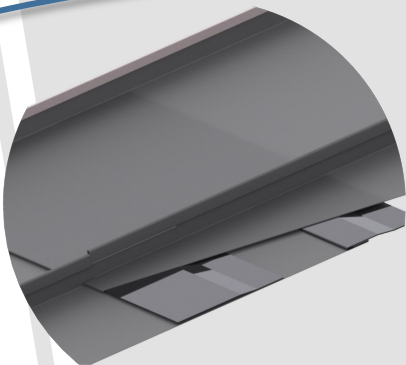
Offset Cleat T13
Ridge Cap T10
Gable Trim T9.2/3
Standing seam



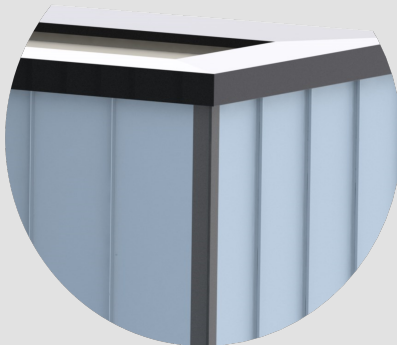


SEAMLESS ALUMINIUM group

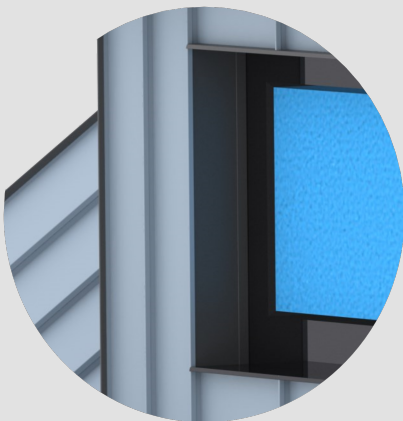
Product Data Sheet : Standing Seam



Standing seam
double lap joint

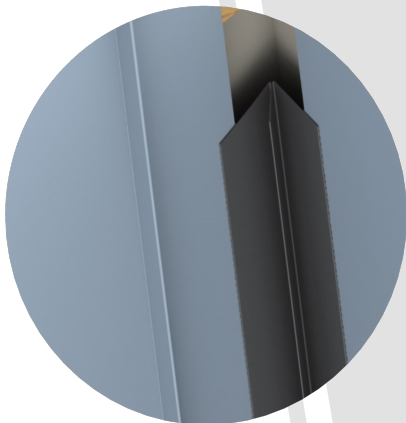


Standing seam
Copping
Corner trim T3.2

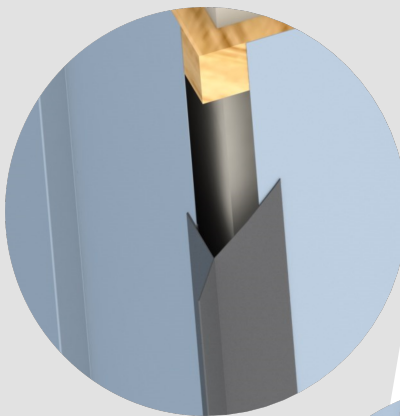


Base Trim T7/8
Standing seam

End trim T15.1
Roof Trim T6
Gable Trim T9.3
Standing seam

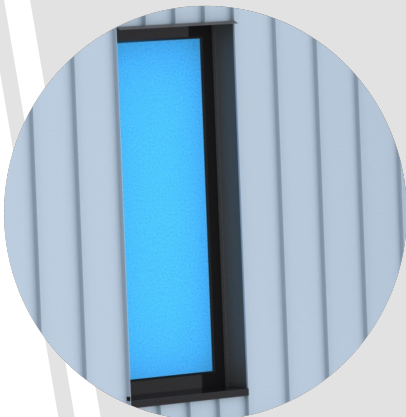


Internal corner
Trim T3.3

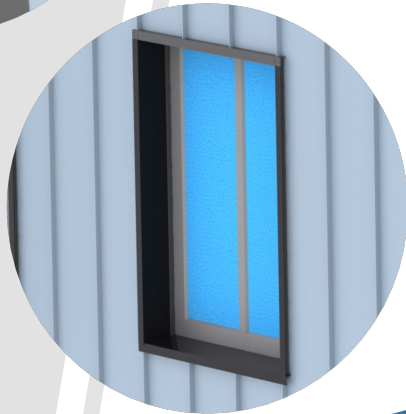


External corner
Trim T3.4

Roof Trim T6
Fascia trim T16
Standing Seam
Gutter



Offset Cleat T13
Ridge Cap T10
Gable Trim T9.2/3
Standing seam





Cleaning & Maintenance

Introduction:

These recommendations cover procedures for cleaning and maintenance of powder coated Aluminium rainwater, eaves, window cills, standing seam and capping systems. Powder Coatings are organic coatings which need to be cleaned and maintained regularly to ensure that the decorative and protective properties of the coating are retained. Powder Coated Aluminium systems are not a FIT and FORGET product and regular cleaning and maintenance (depending on environment) will be required to ensure product/ system lifespan and correct functionality.

Method:

Standing Seam should be regularly cleaned of debris, leaves and grit to maintain the designed finish and to prevent ponding or debris build up which will in turn damage finishes. Check all joints are watertight, fixings are secure and take any remedial action to rectify if necessary. Usual maintenance of powder coated applied products can be done with an appropriate cleaning product, followed by clear water rinsing and wiping using a soft cloth. All surfaces should be cleaned using a soft cloth or sponge, using nothing harsher than natural bristle brushes. There is no need to overclean or apply excessive pressure or rubbing. We recommend frequent mild cleaning rather than infrequent heavy cleaning. If the project is subject to any hazardous unusual environmental factors, or is close to salt water, an estuary or marine environments then Seamless Aluminium Group must be consulted on an individual project basis. If the coating is very heavily soiled (i.e. due to lack of maintenance), then the recommendation is to consult a specialized cleaning company.

Recording:

Failure to follow cleaning and maintenance guidelines will render all Warranties null and void therefore a written record must be kept in respect of all inspections, maintenance, cleaning and repair work detailing the following Information Name and details of inspection , cleaning body, date of works (cleaning, maintenance and or repair), detail of works undertaken and Inspection report findings.

Cleaning Products:

Before cleaning the cleaning agent’s datasheet must be consulted. Usual maintenance can be done using water with mild detergent (pH 5 to 8) rinsing down afterwards with fresh water If the atmospheric pollution has resulted in heavy soiling of the coating, some stains or marks may require stronger domestic products such as products based of alcohol, petroleum spirits, white spirit, or bleach (diluted to 5%). In this case, it is necessary to rinse the coating immediately after the cleaning product has been used. In no circumstance should any abrasive cleaner or polish, or any cleaner containing ketones or esters be used.

Frequency:

The frequency of cleaning depends in part on the geographical and environmental location of the building, the elements it is exposed to and the standard of appearance that is required . Also the requirements to remove deposits, which could, during prolonged contact with either the powder film or the metal substrate, (if exposed) cause damage. As a general rule the coated surface should be cleared at least once a year in a normal environment. However in areas where pollutants are more prevalent, coastal areas or industrial areas a more frequent cleaning programme must be carried out. The Industry standards for the cleaning of Powder Coated Aluminium products dependant on their located environments are as follows:

Environment	Frequency of Cleaning
Normal Urban industrial. Moderate SO ₂ levels in coastal area with low salinity	12 months
Severe Industrial areas and coastal areas with moderate salinity and SO ₂ levels >30 mg/m ³	6 months
Hazardous Industrial areas with humid and aggressive atmospheres, with SO ₂ .> 30mg/m ³ Coastal and offshore areas less than one km from coast with high UV, high humidity and salt > 12 mg per litre rain water)	3 months