

GRP CANOPIES

Bedford - Mono-Pitched (Ready to Tile)

Fitting Instructions



*Gallows brackets supplied at extra cost

STORAGE

Brickfab GRP canopies should be stored in a secure area, laid down on the pallet provided and protected from wind and rain whenever possible.

DO NOT stack or place weight on top of the canopy or store anything directly onto the canopy surface.

MAINTENANCE

- ◆ Clean the canopy occasionally with soapy water or an ammonia free detergent.
- ◆ A non-abrasive damp cloth should be used to avoid any damage to the canopy surface.
- ◆ Brickfab GRP canopies are low maintenance and do not require painting.

BRICKFAB GRP CANOPIES ARE NON-STRUCTURAL. DO NOT IN ANY CIRCUMSTANCE STAND ON THE CANOPY OR USE IT TO BEAR ANY LOAD/WEIGHT.

UNPACKING & FIXINGS

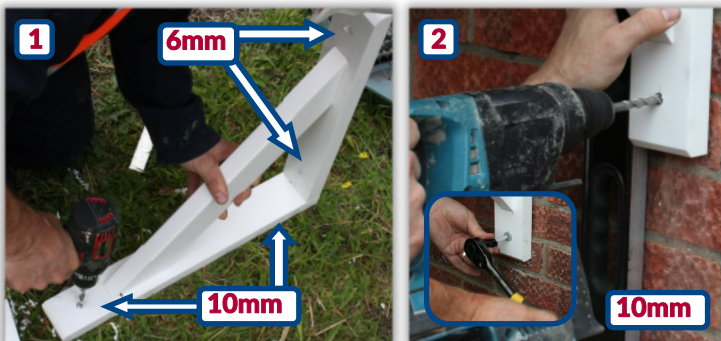


Lift the canopy upright and cut open the packaging at the rear. Taking care not to damage the finished surface slide the packaging off the canopy. Only fully remove the canopy from the packaging when fitting is imminent.



Brickfab recommends using Fischer SXR 10x80, or similar fixings to secure the brackets and canopy unit to brick work. For all other substrates please contact Brickfab. Use 6.0 x 75/46 screws for the canopy underside. Brickfab canopy and brackets fixing kits can be supplied at extra cost.

GALLOWS BRACKETS INSTALLATION



Mark and pre-drill 4 holes with a 6mm (x2) and 10mm (x2) bit. Position the bracket level with the door head, or where desired, ensuring the width between both brackets won't exceed 1200mm. Using the pre-drilled holes, drill through the bracket and into the wall (10mm bit), ensuring it is level vertically. Secure using 2 SXR 10x80 fixings (see inset).



Ensure the second bracket is level horizontally and equidistant from the door frame as the first (not exceeding 1200mm). Using the pre-drilled holes, drill through into the wall (10mm bit) and secure bracket as before (2 SXR 10x80 fixings), ensuring it is level vertically (see inset). The brackets are now ready to receive the canopy. Copyright © 2016 Brickfab Ltd

CANOPY FIXING



If required, apply mastic sealant to the rear of the canopy. Then carefully lift and place onto the gallows brackets.



Centre the canopy, ensure an equal distance from each bracket to the canopy edge and push to the wall.



Using the pre-drilled holes, drill through the frame into the wall, using a 10mm bit (x4). Fix with 4 SXR 10x80 fixings.



Using the pre-drilled holes, repeat as step 3 with the 4 fixing points on the lower part of the frame.

SECURING BRACKETS



Using the pre-drilled holes, drill through the bracket and into canopy underside. Repeat for other bracket.



Secure the bracket to using 6.0 x 75/46 screws (x2) and suitable white cap (see inset). Repeat for other bracket.

FINISHING



Finish using white bolt caps on each of the 4 bracket-to-wall fixing points. The canopy is now installed and ready to be tiled.

TILING SHOULD BE COMPLETED AS PER TILE MANUFACTURERS INSTRUCTIONS

