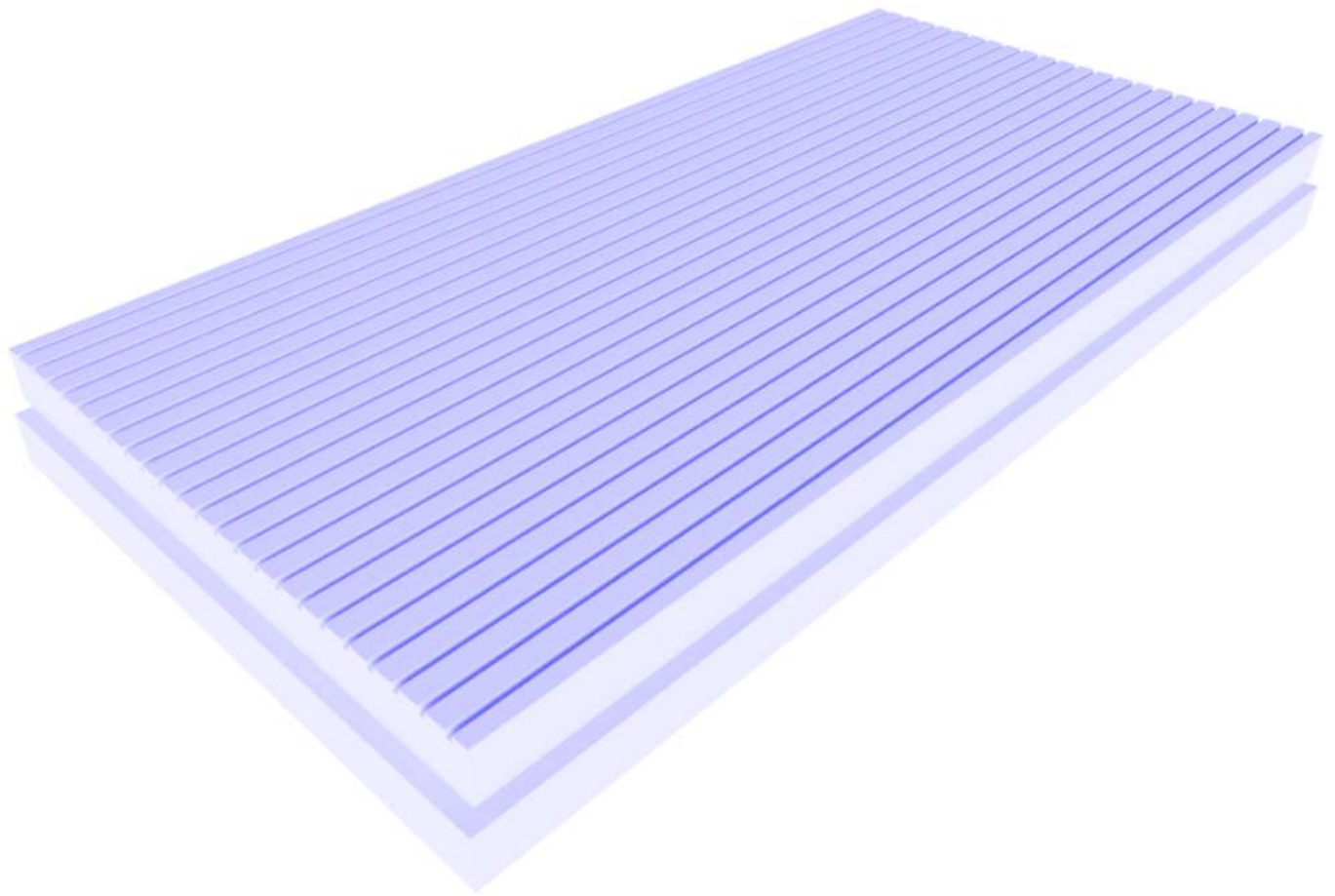


# Jackofoam®

## 500 BASEMENT BOARD



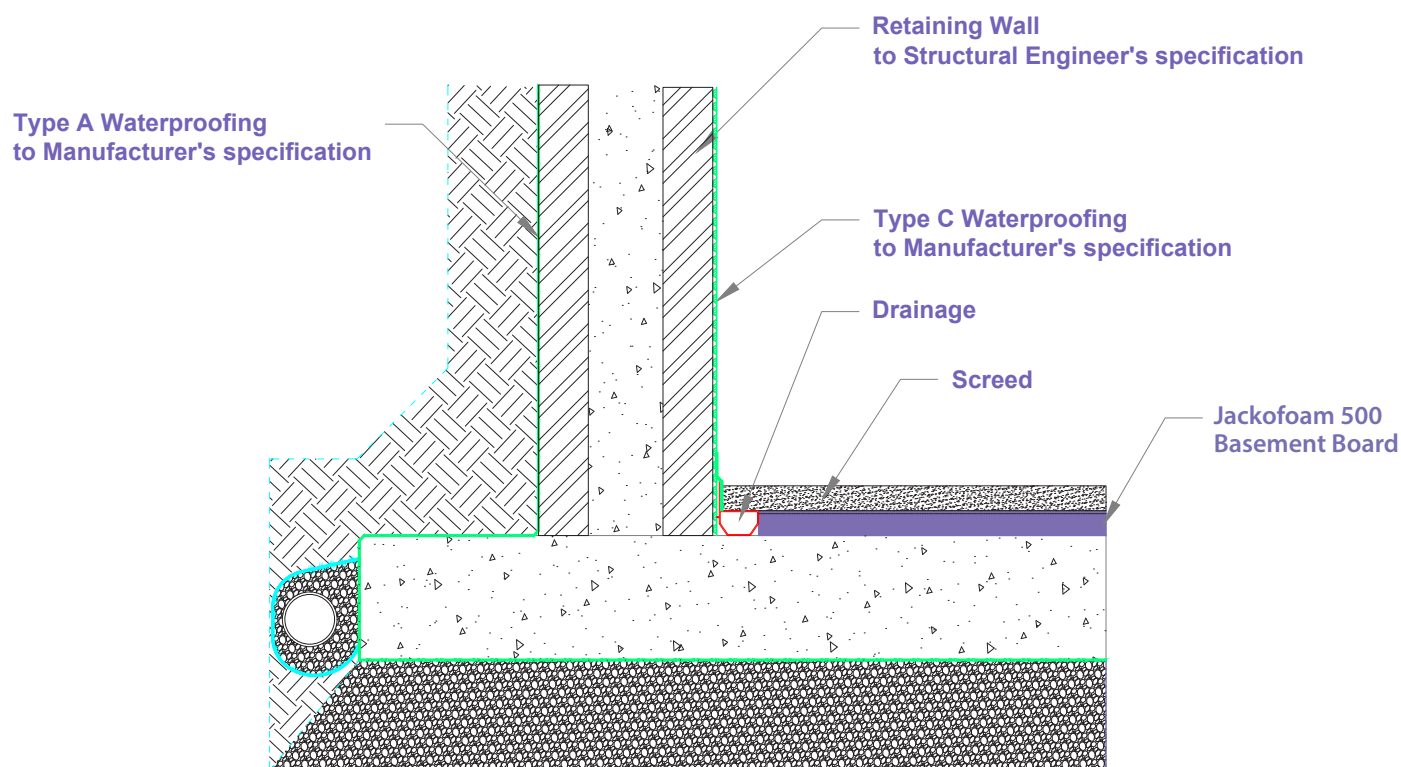
**JACKOFOAM 500 BASEMENT BOARD** has been specifically developed to assist in the installation of internal waterproofing systems for basement structures.

- The product is manufactured from BEWI's 500 grade of extruded polystyrene. This high compressive strength material has a very impressive long-term compressive creep property of  $225\text{KN/m}^2$ , meaning that even after 50 years the material will only compress by 2% if it is loaded at  $225\text{KN/m}^2$ .
- This material is normally used for insulation under parking lot slabs.
- The **JACKOFOAM 500 BASEMENT BOARDS** have been developed to be installed above the concrete basement floor slab and under the floor screed. The boards are 50mm thick so can be installed to create an insulated drainage layer that finishes flush with the internal perimeter drainage gulley.
- The boards are grooved on one surface, 6mm x 6mm at 25mm spacing, to assist with drainage.
- The edges of the boards have a shiplap profile to minimise the risk of screed passing through any gaps between the boards that may exist following installation.

# Jackofoam®

## 500 BASEMENT BOARD

### Typical Use



### Data

Art. No.	Thickness	Nominal Area (mm)	Effective Area (mm)	Edge Treatment
57382780	50	1200 x 600	1185 x 585	15mm Shiplap Edge

Property	Standard	Unit	Value
Compressive Stress at 10% deformation	EN826	KN/M <sup>2</sup>	500
Compressive creep (50 years @ 2% deformation)	EN 1606	KN/M <sup>2</sup>	225
Design Thermal Conductivity	EN 12667	W/mK	0.034
Long term Water absorption by total immersion	EN/ISO 16535	%VOL	<0.7
Coefficient of Thermal Expansion	EN 822	mm/m C	0.07
Maximum Working Temperature		°C	70
Fire Properties (Class) NPD (formerly Class F)	EN-13501-1		NPD (formerly Class F)