

2023 / 2024

THE
ADOMAST
PRODUCT
GUIDE


ADOMAST CREATE **SPECIALIST PRODUCTS** FOR THE **CONSTRUCTION INDUSTRY**. WE ENSURE OUR PRODUCTS ARE PRODUCED TO THE **HIGHEST STANDARDS** WHILST BEING COMPETITIVELY PRICED. ADOMAST OFFER A **COMPREHENSIVE PRODUCT RANGE** AND ARE CONSTANTLY UPDATING OLD TECHNOLOGY WITH THE LATEST **SCIENTIFIC KNOWLEDGE**, FOCUSING ON AN INCREASINGLY **ENVIRONMENTALLY CONSCIOUS** INDUSTRY WITHOUT COMPROMISING PERFORMANCE OR **QUALITY**.



Construction Repair Mortars

 Adopatch Fairing Coat	5
 Adopatch HB45	5
 Adopatch HP	5
 Adopatch Kerb Repair	5
 Adopatch Primer	6
 Adopatch Rapid Repair Mortar	6
 Adoplug Set Plug	6
 Adoplug Tie Hole Filler	6
Adoplug	7
Adopatch White/Grey	7
Epocrack Seal	7
Epomast Fastpatch	7
Epomast Mortar	8
Epomast Tack Primer	8
Resomast Mortar	8

Admixtures

 Adoprufe 9005	11
Adoair	11
Adoflow ACF	11
Adoflow Extra	11
Adoflow Extra PCE	12
Adoflow S	12
Adogrout	12
Adoprufe	12
Adoprufe HP	13

Concrete Curing Agents & Retarders

Adocure Sealer	15
Adocure Sealer PF	15
Adocure Sealer Pro	15
Adocure Standard	15
Adocure Super	16
Adocure Super AL	16
Adocure Super T	16
Adocure WW	16
Adocure WW/T	17
Adotard MF	17
Adotard MF-Pro	17
Adotard TF	17
Safecure Sealer	18
Safecure Standard	18
Safecure Super	18
Safecure Super 90W	18
Safecure Super T	19
Safetard Gel	19
Safetard Liquid	19

Mould Release Agents & Formwork Treatments

 Adoclean Bio	21
 Adowax Bio	21
 Deactivator Bio	21
Adofill	21
Adolease	22
Adoseal	22
Adoseal WB	22
Adoshield Premium	22
Adostrike	23
Adostrip	23
Adostrip DC	23
Adofoam Tape	23
Adowax	24
Extracon Bio	24
Extracon DS	24
Extracon XS	24
Naturol CR2	25
Naturol CR3	25
Plastrip S	25
Safelease	25
Safelease 30%	26
Safestrike	26
Safestrike XL	26
Safestrike XL HP	26

Resin Flooring, Sealing & Dustproofing

 Adocoat Proflex	29
 Adocoat TFC	29
 Adocoat LS	29
 Epomast WB	29
Adofloor Seal & Wall Seal	30
Adoseal HP	30
Adotuf	30
Adotuf Lithium	30
Epomast Ultracoat	31
Resoseal	31
Safeblock Seal	31
Safefloor Seal & Wall Seal	31

Waterproofing & Roofing

 Adoprufe 9005	33
 Adocoat HPW	33
 Industrial Cutback Bitumen	33
Adocoat Bitumen Paint	33
Adocoat Bitumen Paint Primer	34
Adocoat B.M.S	34
Adocoat Felt Adhesive	34
Adocoat C40B4 (K-140)	34
Adocoat C60B4 (K-160)	35
Adocoat LAC -All Weather	35
Adoguard HD	35
Adocoat Emulsion	35
Aluminium Paint For Roofs	36
Aquabar	36
Aquabar Mastic	36
Metwash Premium Hand Cleaner	36
Patination Oil	37

Adhesives & Primers

Adobond PVA	39
Adobond SFR	39
Adobond SBR	39
Epomast Tack Primer	39

Epoxy & Polyester

 Adocoat Proflex	41
 Adocoat TFC	41
 Epomast WB	41
Epomast DPM	41
Epomast Tack Primer	42
Epomast Ultracoat	42

Cleaners & Maintenance

 Adoclean AR Plus	45
 Adoclean Bio	45
 Degreaser & Bitumen Remover	45
 Adowax Bio	45
 Deactivator Bio	46
Adoclean	46
Adoclean Gel	46
Adoclean Patio & Path	46
Adosafe Clean	47
Adosafe Clean Gel	47
Adowash	47
Deactivator	47
Resoklens	48
Scafclean	48
Styrolkless	48

Screeding

Adoscreed Fastpatch	51
Adoscreed Safeseal PU	51
Adoseal HP	51
Crack Repair SFR	51
Epomast DPM	52
Screed Cure ER	52
Screed Primer A	52

Complementary Products

Adobreak	55
Anti-Freeze	55
Screenwash	55
8 Litre Basic Sprayer	55
6 Litre Professional Sprayer	55
16 & 20 Litre Plastic Sprayer	55

Bespoke Products

Bespoke Products	56
------------------	----

Whenever you see the following symbols the product is:



Environmentally Friendly



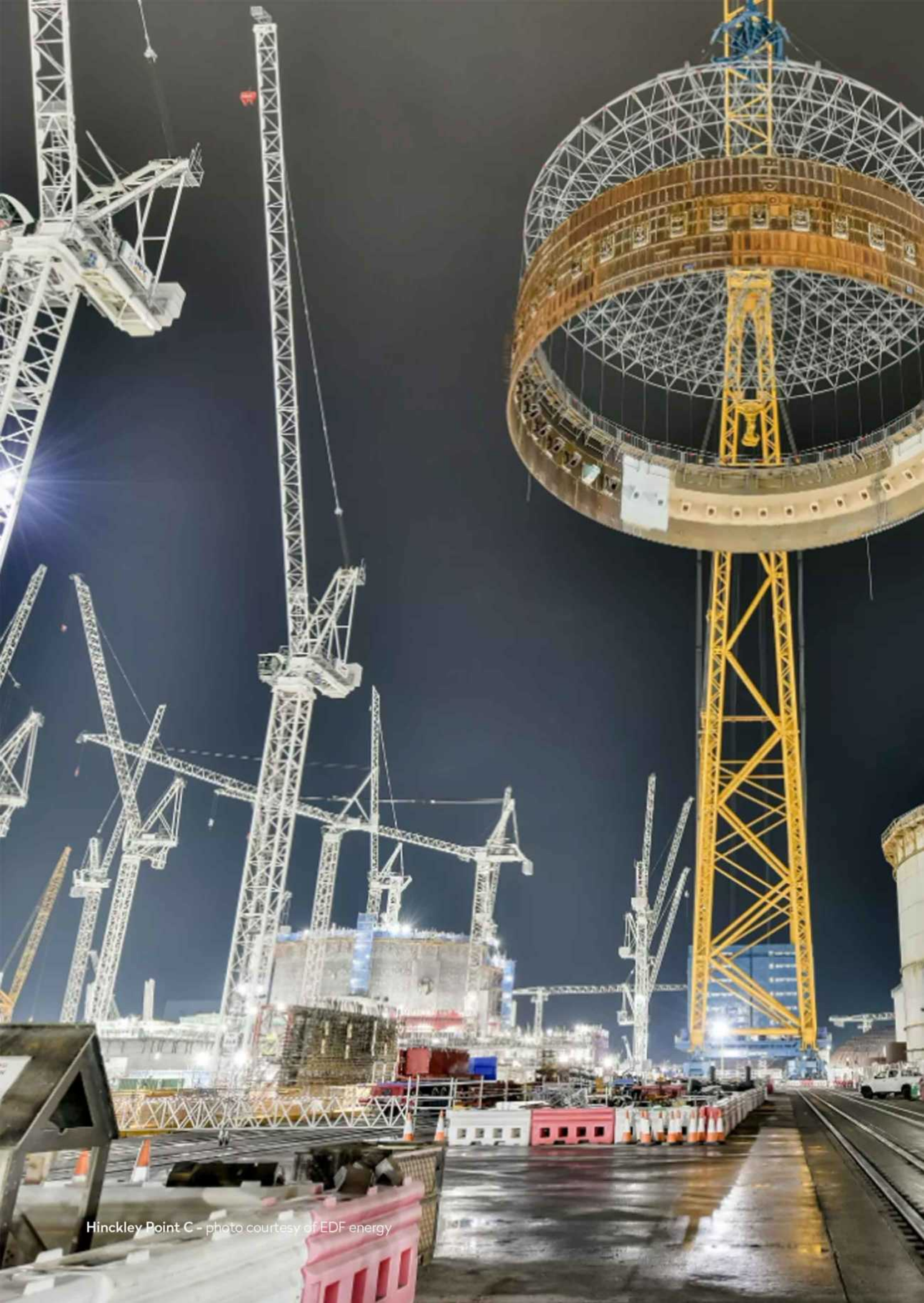
Water Regulations Advisory Scheme Approved



Safe Non-Hazardous



UKCA Approved



Hinckley Point C - photo courtesy of EDF energy

Construction Repair Mortars

Adomast has an excellent reputation in supplying high performance cementitious repair mortars. These mortars are polymer reinforced to impart high strength, low shrinkage characteristics.

The use of ultra-fine cement bestows excellent chemical and water resistance and reduces surface cracking. These products are for general construction repair or the filling of tie holes.

We also offer more technically performing repair products, based on epoxy and polyester resins, where the ultimate strength, water and chemical resistance of the repaired area is greater than it was originally. These products are supplied pre-weighed to allow straightforward mixing and easier application.

Construction Repair Mortars

NEW Adopatch Fairing Coat

Ultra-fine mortar for filling surface blowholes

Adopatch Fairing Coat is a one component acrylic polymer modified powder. When mixed with water, Adopatch Fairing Coat produces a highly consistent, smooth, trowelable, shrinkage, compensated fairing coat mortar. Adopatch Fairing Coat is suitable for application in the range of feather edge up to 3 mm, it also can be used to infill honeycombing and voids up to 5 mm deep.

- **Sizes:** 8kg, 25kg
- **Strength:** > 25N after 28 days
- **Thickness:** Feather edge to 5mm
- **Class:** R2 for repair principles 3.1



NEW Adopatch HB45

Rapid setting repair mortar

Adopatch HB45 is a high-build, hand/wet-spray applied, one-component polymer modified, and fibre reinforced structural repair mortar. This is a thixotropic mortar made up of dry powders, selected aggregates which when mixed with water allows it to be used vertically and overhead. Without the use of formwork, this can be applied in a single application of up to 80 mm thickness in vertical applications and up to 60 mm thickness in overhead applications.

- **Sizes:** 8kg, 25kg
- **Strength:** > 50N after 28 days
- **Class:** BS EN 1504-3 Class R4 for repair principles 3.1, 3.3, 4.4, 7.1, and 7.2.



NEW Adopatch HP

High performance rapid setting repair mortar

Adopatch HP is a single component, polymer modified, fibre reinforced, rapid curing cement-based repair mortar. Adopatch HP provides a durable, rapid setting, high strength and easy to apply mortar with excellent low sag properties. Suitable for use on vertical surfaces.

- **Sizes:** 8kg, 25kg
- **Strength:** > 45N after 28 days
- **Thickness:** 5 – 75mm
- **Class:** Class R4 for repair principles 3.1, 4.4, 7.1, and 7.2.



NEW Adopatch Kerb Repair

Rapid setting repair mortar

Single component rapid setting cementitious repair mortar with the inclusion facilitating quick return to service. The mortar has a working time of 10-15 minutes and a setting time of 20-30 minutes at 20°C. It has been developed for the rapid repair of kerb stone, cracks and holes in flooring, walls, stairs and steps. It can be ready for overcoating within 90 minutes. It is suitable for vertical.

- **Sizes:** 8kg
- **Strength:** > 35N after 28 days
- **Thickness:** 2 – 20mm unfilled



NEW

Adopatch Primer

Repair compound based primer coat

Adopatch primer is a one component polymer modified cementitious bonding slurry specially formulated to enhance the bond between the Adopatch range of repair mortars and existing concrete substrates. This is also designed to protect the steel reinforcement by providing a highly alkaline passivating layer around the reinforcement and by the use of migrating corrosion inhibitor technology, which minimises further corrosion to surrounding steel reinforcement.

- **Sizes:** 8kg, 20kg
- **Strength:** > 2N / mm² (Concrete failure)
- **Thickness:** 2mm in two coats



NEW

Adopatch Rapid Repair Mortar

Rapid setting repair mortar

Adopatch Rapid Repair Mortar is a pre-packed single component cementitious repair mortar suitable for repairing and making good internal floors, stairs and steps and for general repairs to cracks and holes.

- **Sizes:** 8kg, 25kg
- **Strength:** > 35N after 28 days
- **Thickness:** 2 – 20mm unfilled
- **Class:** BS EN 13813, Class CT-C35-F4



NEW

Adoplug Set Plug

Rapid patching repair mortar

Set Plug is a fast set cementitious, chloride free mortar for rapid patching and plugging of water leaks in concrete structures. This is used for patching water leaks in concrete structures such as; Tunnel lining, sewage plants, basements, water tanks, foundations, and concrete segments. Fast setting. Easy to use. Single component, only needs addition of water. Excellent bond to concrete. Low exothermic, minimizing thermal cracks.

- **Sizes:** 8kg, 25kg
- **Strength:** > 24N after 28 days
- **Thickness:** 15mm



NEW

Adoplug Tie Hole Filler

Rapid set repair mortar

Adoplug Tie Hole Filler is a single component, polymer modified, fibre reinforced, rapid curing cement-based repair mortar. Which provides a durable, rapid setting, high strength and easy to apply mortar with excellent low sag properties. This can be applied to fill inset tie-bar holes formed by formwork bolts in new construction, in addition to sealing grout holes and voids around fixings in pre-cast concrete elements. Durable & fast setting waterproof seal providing excellent protection to steel reinforcements and host concrete.

- **Sizes:** 8kg, 25kg
- **Strength:** > 45N after 28 days
- **Thickness:** 5 – 75mm
- **Class:** BS EN 1504-3 Class R4 for repair principles 3.1, 4.4, 7.1, and 7.2.



Construction Repair Mortars

Adoplug

Wall tie filler & sealing compound

Adoplug is a polymer modified, fibre reinforced, ultra-fine cementitious repair mortar designed specifically for plugging tie holes. When mixed with water it forms a cohesive, easy to apply, shrinkage compensated compound and cures to develop a strongly bonded watertight plug to form an effective seal.

- **Sizes:** 8kg, 25kg
- **Strength:** >26N/mm² after 28 days
- **Thickness:** 5-50mm
- **Class:** R1 EN 1504-3 Concrete Repair
- **Yield:** 15.75 Litres



Adopatch White/Grey

Rapid set repair compound

Adopatch is a cementitious powder compound with the inclusion of a polymer to promote adhesion and resistance to the passage of water and a water reducing agent to facilitate a low water cement ratio. Can be blended together to more closely colour match the concrete.

Adopatch can be blended to your specific to meet your colour needs.

- **Sizes:** 8kg, 25kg
- **Strength:** >33N/mm² after 28 days
- **Thickness:** 3-20mm
- **Class:** R2 EN 1504-3 Concrete Repair
- **Yield:** 13.5 Litres



Epocrack Seal

Epoxy resin sealer for concrete crack repair

Epocrack Seal is a two pack solvent free epoxy repair resin which has been formulated as an extremely low viscosity system for gravity feeding or pressure injecting into fine cracks, voids and fissures in concrete. Suitable for damp or dry surfaces & penetrates cracks down to 0.2mm.

- **Sizes:** 1kg, 10kg
- **Coverage:** 5m² per litre



Epomast Fastpatch

Epoxy resin for rapid repairs to concrete & masonry surfaces

Two component trowel applied Epoxy resin for rapid & permanent repairs to concrete and masonry surfaces. It is a blend of Epoxy resin and graded aggregate with a pot life of 40 minutes, has excellent impact and abrasion resistant. No primer required.

- **Sizes:** 5kg, 10kg
- **Coverage:** 5kg pack yield 2.5 ltrs of material
- **Resistance to chemicals, water & frost**
- **High Strength:** >75N/mm² after 28 days
- **Adhesion to concrete:** 3.8 MPa (concrete failure)



Epomast Mortar

Epoxy resin based repair mortar

A cementitious powder compound blended with an epoxy resin to create a high strength, high chemical resistant, waterproof, low slump repair mortar. Has excellent abrasion resistance & chemical resistance, with virtually no shrinkage. Repairs to spalled /damaged concrete, chemical bunds, pre cast beams and more.

- **Sizes:** 12kg, 25kg
- **Strength:** >70N/mm² after 28 days
- **Coverage:** 2kg will fill approximately 1m² by 1mm deep



Epomast Tack Primer

Epoxy resin based primer coat

Epomast Tack Primer has been developed as a primer coating that exhibits outstanding adhesion to concrete & other porous surfaces. It is an ideal primer / adhesive for bonding new concrete to old.

Also offers a protective treatment to exposed steel re-enforcement during concrete repair.

- **Sizes:** 1kg, 5kg
- **Coverage:** 3-6m² per kg
- Solvent free / low odour
- **Adhesion to concrete:** 3.8 MPa (concrete failure)



Resomast Mortar

Polyester resin compound

A Cementitious powder compound blended with a polyester resin. Provides the ideal solution in numerous applications involving concrete and masonry repairs, jointing, filling and grouting. Can be used in temperatures below freezing and sets within 20 minutes.

- **Sizes:** 12kg, 25kg
- **Coverage:** 2kg will fill approximately 1m² by 1mm deep





Hinckley Point C - photo courtesy of Hinckley Point C Media Team

Admixtures

Adomast supplies compounds for combining into the concrete formulation at the mixing stage, which accelerate the initial setting time and strength, or help improve the mixing and application of concrete for difficult or awkward pours.

We produce water reducing compounds that help enable the casting and speed the setting of concrete at low temperatures, or provide safer and delay free casting over the winter months.

Adomast offers additives to incorporate microscopic air bubbles in a controlled manner into the concrete, significantly improving the resistance of the concrete to surface cracking due to ice and frost. We also offer products that can improve the water resistance of concrete, allowing it to withstand extremely high water pressure.

Admixtures

NEW

Adoprufe 9005

Ultra-fine mortar for filling surface blowholes

Adoprufe 9005 is a high performance reactive Integral water repellent and efflorescence reducer for concrete. Implementation in a wide range of application including block paving, concrete bricks and blocks, precast concrete, external renders, and mortars.

This is a reactive liquid emulsion admixture, designed to impart a high degree of water repellence in concrete mixes, significantly reducing water absorbency. While the concrete is still breathable, allowing water vapour to permeate through.

■ Sizes: 5L, 20L, 25L, 205L, IBC

■ Typical dosage rate: 0.25-2.0%



Adoair

Concrete air entraining agent

Adoair is a chemical formulation designed to impart the deliberate and controlled entrainment of air in concrete in the form of disconnected, uniformly dispersed microscopic air bubbles. It helps increase the workability with lower water / cement ratio. Offers increased resistance to passage of water through hardened concrete and produces frost resistant concrete.

■ Sizes: 5L, 20L, 25L, 205L, IBC

■ Typical dosage rate: See online data sheet for details



Adoflow ACF

Chloride free concrete accelerator & low temperature plasticiser

A specially formulated non-chloride, non-corrosive liquid hardening accelerator designed as a concrete accelerator and plasticiser. It accelerates the setting time of concrete by speeding the cement hydration process and increasing the early-age strength of the concrete. Adoflow ACF can also be used to provide safer winter concreting without delays.

■ Sizes: 5L, 20L, 25L, 205L, IBC

■ Typical dosage rate: 1L per 100kg of Portland cement



Adoflow Extra

Super plasticiser for concrete & mortar

A liquid plasticiser and water reducing agent that imparts extremely high workability when added to a concrete mix. Being a highly effective deflocculating agent it disperses cement paste into its primary particles, significantly increasing the flow characteristics of the paste. This permits significant reduction in water content of normal workability concrete producing higher early and ultimate strengths.

■ Sizes: 5L, 20L, 25L, 205L, IBC

■ Typical dosage rate: 1L per 100kg of Portland cement



Adoflow Extra PCE

Latest generation in super plasticisers

Amber coloured, low viscosity, high range water reducer. Can achieve over 20% water reduction – high deflocculating effect allows the dispersed state to be maintained for longer periods. Adoflow Extra PCE has excellent compatibility with all types of concrete, mortars, self-levelling systems and grouts.

- **Sizes:** 5L, 20L, 25L, 205L, IBC
- **CE:** marked to EN 934-2
- **Dosage rate:** 0.5-0.9% of solution per 100kgs cement



Adoflow S

Standard set plasticiser

Helps up to 25% reduction in added water content for a given slump with the resultant reduction in water / cement ratio providing increased strengths. Alternatively, it can be used to increase slump by 150% without any increase in water content. It will aid workability without an increase in water / cement ratio. Adoflow S imparts easier and speedier placing and compaction of the concrete with reduced shrinkage and minimal cracking.

- **Sizes:** 5L, 20L, 25L, 205L, IBC
- **Typical dosage rate:** 1.0L per 100kg of Portland cement



Adogrout

Powder based expanding medium which counteracts settlement & shrinkage in cement based grout

A powder based plasticising agent and expanding medium. It is combined into a cement based grout prior to adding the hydrating water. The expanding technology generates gas during the hydration process to counter-act normal settlement & shrinkage and leaving a slight residual overall expansion.

- **Sizes:** 250g
- **Typical dosage rate:** 250g pack with 50kg cement



Adoprufe

Integral concrete & mortar waterproofer

Adoprufe is a concentrated liquid solution of waterproofing chemicals. When added to a concrete mix it firstly reacts physically to improve wetting properties and ensure uniform dispersion & full hydration of all cement particles. Secondly it reacts chemically to deposit throughout the mix in all pores and capillaries an insoluble water repellent metallic stearate. The resulting concrete is not only more dense and stronger, but it is also waterproof to withstand extremely high water pressures.

- **Sizes:** 5L, 20L, 25L, 205L, IBC
- **Typical dosage rate:** See online data sheet for details



Admixtures

Adoprufe HP

Concentrated concrete & mortar waterproofer

Adoprufe HP is low viscosity, insoluble water repellent metal stearate, which is deposited throughout the concrete or mortar via the pores & capillaries, boosting internal water resistance. Assists the placing & compacting of the concrete & helps reduce the water / cement ratio resulting in a reduction of pores & capillaries, producing a denser and higher strength concrete. Will not corrode steel reinforcement that it may come in contact with.

- **Sizes:** 5L, 20L, 25L, 205L, IBC
- **CE:** marked to EN 934-2
- **Dosage rate:** 0.8 -1.0% of solution per 100kgs cement



Concrete Curing Agents & Retarders

Adomast manufacture a range of premium concrete curing agents and surface retarders.

We offer curing agents that are both easy to apply and quick drying. The film forming coatings optimise the curing of concrete to the highest efficiency levels.

All our concrete curing technologies allow full hydration to be achieved, resulting in higher strength, significantly reduced surface dusting & cracking, and low shrinkage concrete that is much more durable.

Our Safetard concrete retarding agents are WRAS approved and have been the primary retarding compound used in the UK construction industry for many years.

We supply products for aggregate exposure on both vertical & horizontal surfaces. Safetard products delay the set of cast concrete for up to 24 hrs.

Concrete Curing Agents & Retarders

Adocure Sealer

Concrete curing & sealing compound

Adocure Sealer is a clear, low viscosity acrylic polymer resin solution, targeted primarily for application to surfaces of freshly laid concrete where it has a double function. Firstly, to form a highly effective concrete curing membrane that conforms to ASTM C309 and secondly to act as an in-depth sealer for the hardened concrete rendering its surface dustproof.

- **Sizes:** 5L, 20L, 25L, 205L, IBC
- **Coverage:** 4–6m² per litre
- Extremely hard wearing



Adocure Sealer PF

Concrete curing & sealing compound for power floated flooring

Adocure Sealer PF is a clear, low viscosity acrylic polymer resin solution, targeted primarily for application to surfaces of freshly laid concrete that has been power floated. It has been designed with dual functionality. Firstly, to form a highly effective concrete curing membrane that conforms to ASTM C309 and secondly to act as an in-depth sealer for the hardened concrete rendering its surface dustproof.

- **Sizes:** 5L, 20L, 25L, 205L, IBC
- **Coverage:** 4–6m² per litre
- Extremely hard wearing



Adocure Sealer Pro

One-part clear acrylic resin polymer solution to cure and seal concrete floors & surfaces

Adocure Sealer Pro is a clear high solids acrylic coating primarily designed for application to the surface of freshly laid concrete. It has a double function – it acts as a highly effective curing membrane and subsequently as an in-depth sealer for the hardened concrete. It renders the concrete surface dustproof and is extremely hard wearing. Also, the water & stain resistance of the concrete is enhanced and produces a gloss finish to the concrete surface.

- **Sizes:** 5L, 20L, 25L, 205L, IBC
- **Coverage:** 4–6m² per litre
- Extremely hard wearing



Adocure Standard

75% Efficiency concrete curing compound

Applied to the surface of freshly laid concrete, Adocure Standard physically 'locks' moisture into freshly cast concrete allowing full hydration of the cement allowing the concrete to fully cure. This is achieved by covering the surface of the concrete with a very thin resin film that prevents moisture in the concrete from leaving the surface.

- **Sizes:** 5L, 20L, 25L, 205L, IBC
- **Coverage:** 4–6m² per litre
- Reduces surface shrinkage and cracking



Adocure Super

90% Efficiency concrete curing compound

Applied to the surface of freshly laid concrete, Adocure Super physically 'locks' moisture into freshly cast concrete allowing full hydration of the cement thus allowing the concrete to fully cure. This is achieved by covering the surface of the concrete with a very thin resin film that prevents moisture in the concrete from leaving the surface.

- **Sizes:** 5L, 20L, 25L, 205L, IBC
- **Coverage:** 4-6m² per litre
- Reduces surface shrinkage and cracking



Adocure Super AL

High efficiency solvent based curing compound tinted with aluminium flake pigment

It quickly forms a barrier layer on the surface preventing moisture from the concrete escaping to the atmosphere, allowing full hydration of the concrete to take place. Significantly improves surface quality, reduces cracking, dusting and plastic shrinkage. The Aluminium Flake pigment reflects direct sunlight keeping the curing surface cooler - great for higher temperature outdoor casting.

- **Sizes:** 5L, 20L, 25L, 205L, IBC
- **Coverage:** 4-6m² per litre
- Curing efficiency to ASTM C309
- For use with all types of concrete inc. white /GGBS or fair-faced concrete finishes



Adocure Super T

High efficiency solvent polymer based curing compound tinted with fugitive dye

Applied to the surface of freshly laid concrete, it forms a barrier layer on the surface preventing moisture from the concrete escaping to the atmosphere, also allows full hydration of the concrete to take place. Significantly improves surface quality, reduces cracking, dusting and plastic shrinkage. The blue tint disappears quickly after application and will not discolour the concrete.

- **Sizes:** 5L, 20L, 25L, 205L, IBC
- **Coverage:** 4-6m² per litre
- Complies with ASTM C309
- For use with all types of concrete inc. white /GGBS or fair-faced concrete finishes



Adocure WW

Water based surface hardener and curing agent

Adocure WW is an aqueous silicate solution that reacts to deposit an integral layer of high strength crystals in the concrete pore structure. Helps prevent premature drying out of the concrete surface reducing the risks of surface cracking and dusting.

- **Sizes:** 5L, 20L, 25L, 205L, IBC
- **Coverage:** 4-6m² per litre
- Economical and very easy to use
- Improves the durability of the concrete surface



Concrete Curing Agents & Retarders

Adocure WW/T

Fugitive dye tinted concrete surface hardener & basic curing compound

Supplied as a ready to use Sodium Silicate solution. Reacts with the fresh calcium in cement creating high strength calcium silicate within the concrete structure. The blue tint disappears quickly after application and will not discolour the concrete. Helps prevent premature drying out of the concrete surface reducing the risk of surface dusting and cracking.

- **Sizes:** 5L, 20L, 25L, 205L, IBC
- **Coverage:** 4–6m² per litre
- Suitable for indoor use
- Improves the durability of the concrete surface



Adotard MF

Concrete surface retarder emulsified paint for mould face treatment

Formulated to retard freshly placed concrete to provide an exposed aggregate decorative finish for concrete or 'keyed' surfaces for subsequent pours or renders. It adheres firmly to the mould face, so it is not displaced during pouring, avoiding variable finishing or used where clear demarcation between face and exposed aggregate is required.

- **Sizes:** 5L, 25L
- **Coverage:** 13–15m² per litre
- Does not discolour concrete that it comes into contact with



Adotard MF-Pro

Concentrated version of adotard MF surface retarder for deeper aggregate exposure

Adotard MF Pro has been formulated to retard but not kill the set of freshly placed concrete, to provide an exposed aggregate finish for concrete or 'keyed' surfaces for subsequent pours or renders. It adheres firmly to the mould face so it is not displaced during pouring, avoiding un-retarded patches or where clear demarcation between face and exposed aggregate is required.

- **Sizes:** 5L, 25L
- **Coverage:** 13–15m² per litre



Adotard TF

Aggregate exposing spray on compound

Once applied to the surface of freshly cast concrete, Adotard TF slows the setting of the cement and helps provide an exposed aggregate finish, either as an attractive architectural feature or as a key for subsequent pours or renders. Our standard grade will expose between 3–5mm of aggregate, and it will not discolour concrete.

- **Sizes:** 5L, 20L, 25L, 205L, IBC
- **Coverage:** 5m² per litre



Safecure Sealer

Water based, low VOC concrete curing and sealing compound

Safecure Sealer is a blend of high performance polyurethane and acrylic polymers, when applied to a freshly laid concrete surface they will dry to a clear film for curing, sealing and dustproofing concrete. Safecure Sealer is suitable for use over new and old concrete and performs well on both interior and exterior concrete.

- **Sizes:** 5L, 20L, 25L, 205L, IBC
- **Coverage:** 4–6m² per litre



Safecure Standard

Aqueous based 75% efficiency concrete curing compound

Applied to the surface of freshly laid concrete, physically 'locks' moisture into freshly cast concrete allowing full hydration of the cement thus allowing the concrete to fully cure. This is achieved by covering the surface of the concrete with a very thin temporary membrane that prevents moisture in the concrete from leaving the surface. Reduces surface shrinkage and cracking.

- **Sizes:** 5L, 20L, 25L, 205L, IBC
- **Coverage:** 4–6m² per litre



Safecure Super

Aqueous based 90% efficiency concrete curing compound

Applied to the surface of freshly laid concrete, Safecure Super physically 'locks' moisture into freshly cast concrete allowing full hydration of the cement thus allowing the concrete to fully cure. This is achieved by covering the surface of the concrete with a very thin temporary membrane that prevents moisture in the concrete from leaving the surface.

- **Sizes:** 5L, 20L, 25L, 205L, IBC
- **Coverage:** 4–6m² per litre
- Complies with ASTM C309
- Reduces surface shrinkage and cracking



Safecure Super 90W

High efficiency aqueous wax polymer based curing compound

Applied to the surface of freshly laid concrete, it rapidly forms a barrier layer on the surface preventing moisture from the concrete escaping to the atmosphere, allowing full hydration of the concrete to take place. Significantly improves surface quality, reduces cracking dusting and plastic shrinkage, suitable for both interior & exterior use.

- **Sizes:** 5L, 20L, 25L, 205L, IBC
- **Coverage:** 4–6m² per litre
- Complies with ASTM C309 & BS EN 7569
- Ideal for self compacting concrete (suitable for all concrete)



Concrete Curing Agents & Retarders

Safecure Super T

High efficiency aqueous polymer based curing compound tinted with fugitive dye

Applied to the surface of freshly laid concrete, it forms an impermeable barrier layer preventing moisture from the concrete escaping to atmosphere. This allows full hydration of the concrete and improves surface quality, reduces cracking, dusting and plastic shrinkage. Tinted blue to aid application, which disappears quickly after application and will not discolour the concrete. Suitable for both interior & exterior use.

- **Sizes:** 5L, 20L, 25L, 205L, IBC
- **Coverage:** 4–6m² per litre
- Complies with ASTM C309
- For use with all types of concrete inc. white /GGBS or fair-faced concrete finishes



Safetard Gel

Colour tinted transparent gel based surface retarder for application to mould face formwork

Safetard Gel has been formulated to retard the set of fresh concrete that comes into contact with it. It is ideally suited to the production of exposed aggregate finishes or 'keyed' surfaces for construction joints. Suitable for all formwork types and is weather resistant. It will not stain or discolour the concrete.

- **Sizes:** 5L, 25L
- **Coverage:** 3–5m² per litre
- Suitable for vertical surfaces



Safetard Liquid

Brown coloured water based surface retarder for application to concrete top face

Safetard Liquid has been formulated to retard but not kill the set of freshly placed top face concrete that it comes into contact with. Easily applied, Safetard Liquid is non-hazardous, fully biodegradable and will not discolour concrete that it comes into contact with.

- **Sizes:** 5L, 20L, 25L, 205L, IBC
- **Coverage:** 3–5m² per litre



Mould Release Agents & Formwork Treatments

Adomast manufacture a wide range of formwork release agents to suit every type of construction casting. Our mould release agents cover all aspects of concrete casting from traditional mould release oils to the latest in emulsion technology. We have enhanced this further with the addition of environmentally safe biodegradable options.

Each mould release agent has been designed to give reliable and repeatable high performance with all types of formwork. This provides a quick, clean and easy release properties with a concrete surface finish that is sharp, uniform, non-stained with minimum defects.

We also manufacture and supply a premium range of formwork treatment auxiliaries including weather resistant formwork sealing compounds, jointing tapes, and corrosion protective wax treatments.

Mould Release Agents & Formwork Treatments

NEW

Adoclean Bio

Environmental friendly cleaner and release agent

Adoclean Bio is a low odour vegetable based cleaning & release agent for the asphalt & bitumen industry. Mixture includes natural fatty acid esters & strong solvents with a high flash point with excellent environmental properties. A great alternative to white spirit, de-aromatized hydrocarbons, diesel and other standard solvents used for cleaning asphalt & bitumen residues, ideal for cleaning metal surfaces. The product can also be used as a lubricant / release agent on machinery and transport equipment.

■ Sizes: 1L, 5L, 10L, 15L, 20L, 25L



NEW

Adowax Bio

Biodegradable protective wax coating

Adowax Bio is a ready to use, biodegradable brush applied protective wax coating & formwork release agent. This is a blend of selected temperature resistant wax and a biodegradable oil. It has been designed to give maximum protection to steel and other metals against rust and all year round weather effects. It is also ideal for protecting formwork when in storage or not in use. It is easily applied with a soft brush or lint free cloth and can be used when mould release agent where the use of liquid release oil is not practical.

■ Sizes: 5kg, 20kg

■ Coverage: 10 - 12m² per kilo



NEW

Deactivator Bio

Suitable for use on all formwork type, very high quality finish

Deactivator Bio can also be applied to construction and plant equipment, to create a thin high performance barrier layer that protects the equipment from concrete splashes and makes the cleaning process much easier and faster. Completely odourless and VOC free formwork release agent that is almost colourless which makes it ideal for fairfaced, white and GGBS blended concrete. It is fully biodegradable with suitable for every type of formwork, it brings a very high-quality architectural finish that is blow hole free.

■ Size: 5L, 20L, 25L, 205L, IBC



Adofill

Two part polyester resin compound for formwork face repair

Designed to be rapid setting with physical and chemical properties which make it ideal for the repair of surface damage and irregularities on most types of formwork in common use. It is simple to mix and apply, Adofill has excellent adhesive properties to most surfaces. Once set the compound is easy to sand and smooth. The final set resin is resistant to water, oil and alkali chemicals.

■ Sizes: 1.2kg, 5kg

■ Coverage: 1m² at 1mm deep uses 2.5kg Adofill



Adolease

General purpose mould release oil

Cost-effective formwork release agent for site use. Forms a chemically modified physical barrier between the formwork and the concrete giving a quick & easy release with a high-quality surface finish suitable for use with all types of concrete, plywood, metal and MDO Formwork.

- **Sizes:** 5L, 20L, 25L, 205L, IBC
- **Coverage:** 30–40 m² per litre
- Amber coloured, low viscosity release agent
- Flammable



Adoseal

Polyurethane based formwork face / surface sealer

Polyurethane solution for sealing plywood formwork & other porous surfaces. High solids & low viscosity make Adoseal easy to apply. Designed to impart a high quality, fully impervious surface lacquer finish to formwork and other porous surfaces. This tough flexible sealing coating increases formwork life considerably. It improves concrete appearance by preventing staining from wood faced formwork.

- **Sizes:** 1L, 5L, 10L, 25L
- **Coverage:** 4–5m² per litre



Adoseal WB

Formwork surface & exposed edge protective sealer

High performance aqueous Polyurethane solution for Sealing Plywood Surfaces & exposed Edge Protective Sealer. Penetrative sealant ideal for timber, metal & concrete surfaces. Imparts a high quality and impervious surface lacquer finish & deeply seals any wood fibres. Significantly helps improve & extend mould and formwork usage, by the deep sealing of wood fibres and providing a highly abrasive, chemically resistant coating.

- **Sizes:** 1L, 5L, 10L, 25L
- **Coverage:** 4–5m² per litre
- Suitable for polystyrene surfaces



Adoshield Premium

Wax based coating solution for corrosion protection in concrete plant & formwork

Specially designed blend of waxes, mineral oils and petroleum distillates to protect metal surface from inclement weather & corrosion. Excellent long term adhesion to metal surfaces ideal for use when prolonged storage or shipping is required.

- **Sizes:** 5L, 10L, 20L, 25L
- **Coverage:** 10m² per litre



Mould Release Agents & Formwork Treatments

Adostrike

High oil content solvent based mould oil

High performance formwork release agent for site & precast use. Forms a chemically modified physical barrier between the formwork and the concrete giving a quick easy release with a very high-quality surface finish. Suitable for use with all types of concrete and also plywood, metal and MDO Formwork.

- **Sizes:** 5L, 20L, 25L, 205L, IBC
- **Coverage:** 30-40 m² per litre
- Flammable
- Amber coloured, low viscosity & low sag release agent



Adostrip

General purpose mould release oil

Cost-effective formwork release agent for site use. Forms a chemically modified physical barrier between the formwork and the concrete giving a quick & easy release with a high-quality surface finish suitable for use with all types of concrete, plywood, metal and MDO Formwork.

- **Sizes:** 5L, 20L, 25L, 205L, IBC
- **Coverage:** 30-40 m² per litre
- Flammable
- Amber coloured, low viscosity release agent



Adostrip DC

Mould release agent for dry casting processes

High performance dry casting formwork release agent for site & precast use. Modified with high performing surfactant technology to create a quick easy release between the formwork & concrete to give a very high-quality surface finish. Suitable for use with all types of concrete and also plywood, metal and MDO Formwork.

- **Sizes:** 5L, 20L, 25L, 205L, IBC
- **Coverage:** 30-40 m² per litre
- Flammable
- Amber coloured, low viscosity & low sag release agent



Adofoam Tape

Tough flexible PVC foam tape

AdoFoam is coated on one side with a special pressure sensitive adhesive on the opposite face with an easy-to-remove backing paper. Adofoam is ideal for sealing joints in formwork which are inaccessible for application of Adotape. When compressed by 30% its reels closed cell structure effectively seals joints preventing grout loss.

- **Roll Size:** 12mm x 6mm x 10m



Adowax

Ready to use, brushable wax protective coating & mould release agent

Easy to apply Adowax is a blend of mould release oil and specially selected temperature resistant waxes. Protects & waterproofs formwork & other equipment from all climatic conditions. High performance mould release agent when use of a liquid release agent is not practical.

- **Sizes:** 5kg, 20kg
- **Coverage:** 10m² per kg
- Temperature stable to 40°C



Extracon Bio

Fully biodegradable mould release agent

A low viscosity blend of natural vegetable oils, high performance & non-hazardous formwork release agent suitable for site & precast use. Forms a chemically modified physical barrier between the formwork and the concrete, imparting a quick, easy release & creating a high-quality surface finish. Suitable for use with all types of concrete, including white/GGBS or fair-faced concrete finishes.

- **Sizes:** 5L, 20L, 25L, 205L, IBC
- **Coverage:** 30–40 m² per litre
- Suitable for use on plywood, GRP/Plastic, steel, MDO formwork



Extracon DS

High concentration, high performance mould release agent

Mineral oil based, non-hazardous formwork release agent suitable for Site & Precast use. High performance Amber coloured release agent forms a chemically modified physical barrier between the formwork and the concrete, imparting a quick, easy release & creating a high quality surface finish. Suitable for use with all types of concrete, including white/GGBS or fair-faced concrete finishes.

- **Sizes:** 5L, 20L, 25L, 205L, IBC
- **Coverage:** 30–40 m² per litre
- A low odour and zero VOC non staining
- Suitable for use on plywood, GRP/Plastic, steel, MDO formwork



Extracon XS

Fast drying mould release agent

Mineral oil based formwork release agent suitable for site & precast use forms a chemically modified physical barrier between the formwork and the concrete, imparting a quick, easy release & creating a high quality surface finish. Suitable for use with all types of concrete, including white/GGBS or fair-faced concrete finishes.

- **Sizes:** 5L, 20L, 25L, 205L, IBC
- **Coverage:** 30–40 m² per litre
- Rapid drying allows almost immediate casting
- Suitable for use on plywood, steel, MDO formwork



Mould Release Agents & Formwork Treatments

Naturol CR2

High concentration, mould release agent

Naturol CR2 is a blend of natural vegetable oils, fully biodegradable & designed for general site and precast use. Forms a chemically modified physical barrier between the formwork and the concrete, imparting a quick easy release & creating a high-quality surface finish. High performance zero VOC non staining formwork release agent. Suitable for use with all types of concrete, including white/GGBS or fair-faced concrete finishes.

- **Sizes:** 5L, 20L, 25L, 205L, IBC
- **Coverage:** 30–40 m² per litre
- Suitable for use on plywood, GRP/Plastic, steel, MDO formwork



Naturol CR3

Fully biodegradable, formwork release agent

High performance almost colour free release agent based on blended, low viscosity & environmentally friendly vegetable oils suitable for precast use. Forms a chemically modified physical barrier between the formwork and the concrete, imparting a quick, easy release & creating a very high quality surface finish. Suitable for use with all types of concrete, including white/GGBS or fair-faced concrete finishes.

- **Sizes:** 5L, 20L, 25L, 205L, IBC
- **Coverage:** 30–40 m² per litre
- Suitable for use on plywood, GRP/Plastic, steel, MDO formwork



Plastrip S

Maximum concentration, low-medium viscosity, mould release oil

High performance mineral oil based formwork release agent suitable for site & precast use. Allows for early application to formwork forms a chemically modified physical barrier between the formwork and concrete, giving a quick & easy release and a high quality surface finish. Designed mainly for use with thermoplastic and GRP formwork.

- **Sizes:** 5L, 20L, 25L, 205L, IBC
- **Coverage:** 30–40 m² per litre
- Amber coloured, low viscosity & low sag
- Suitable for use on plywood, metal and MDO formwork and concrete



Safelease

Mould release emulsion

General purpose & cost-effective aqueous formwork release agent for Site & Precast use. WRAS approved white coloured, low viscosity mineral oil-based release agent which forms a chemically modified physical barrier between the formwork and the concrete creating a high-quality surface finish. Suitable for use with all types of concrete, including white/GGBS or fair-faced concrete finishes.

- **Sizes:** 5L, 20L, 25L, 205L, IBC
- **Coverage:** 30–40 m² per litre
- Low odour and non-staining
- Suitable for use on plywood, GRP/Plastic and MDO formwork



Safelease 30%

High performance formwork release agent based on an emulsified mineral oil

High oil content, aqueous formwork release agent for Site & Precast use. Low viscosity mineral oil-based release agent. Forms a chemically modified physical barrier between the formwork and the concrete, imparting a quick easy release & creating a high-quality surface finish. Suitable for use with all types of concrete, including white/GGBS or fair-faced concrete finishes.

- **Sizes:** 5L, 20L, 25L, 205L, IBC
- **Coverage:** 30–40 m² per litre
- Low odour, zero VOC and non-staining
- Suitable for use on plywood, GRP/Plastic and MDO formwork



Safestrike

Maximum concentration, mould release agent

Completely biodegradable, Safestrike is a blend of natural vegetable oils designed for Site & Precast use which has a high performance & low viscosity. Forms a chemically modified physical barrier between the formwork and the concrete, imparting a quick easy release & creating a high quality surface finish. Suitable for use with all types of concrete, including white/GGBS or fair-faced concrete finishes.

- **Sizes:** 5L, 20L, 25L, 205L, IBC
- **Coverage:** 30–40 m² per litre
- Suitable for use on plywood, GRP/Plastic, steel, MDO and polystyrene formwork



Safestrike XL

Fully biodegradable mould release emulsion

Non-hazardous aqueous formwork release agent suitable for Site & Precast use. Forms a chemically modified physical barrier between the formwork and the concrete, imparting a quick easy release & creating a high-quality surface finish. White coloured, low viscosity, environmentally friendly, vegetable oil based release agent. Suitable for use with all types of concrete, including white/GGBS or fair-faced concrete finishes.

- **Sizes:** 5L, 20L, 25L, 205L, IBC
- **Coverage:** 30–40 m² per litre
- Low odour, zero VOC non staining
- Suitable for use on plywood, GRP/Plastic, steel and MDO formwork



Safestrike XL HP

Fully biodegradable aqueous formwork release agent

Suitable for site & precast use white coloured, High vegetable oil content, low viscosity and environmentally friendly formwork release agent. Forms a chemically modified physical barrier between the formwork and the concrete, imparting a quick easy release & creating a high quality surface finish. Suitable for use with all types of concrete, including white/GGBS or fair-faced concrete finishes.

- **Sizes:** 5L, 20L, 25L, 205L, IBC
- **Coverage:** 30–40 m² per litre
- Low odour, zero VOC non staining
- Suitable for use on plywood, GRP/Plastic, steel and MDO formwork



A close-up photograph of a laboratory procedure. A person wearing a white lab coat and blue nitrile gloves is holding a glass vial with a blue liquid. The vial has a scale with the number '200' visible. The person is using a graduated cylinder to measure the liquid. The background is a blurred laboratory setting.

We are here
to make sure all
your concrete &
formwork treatment
needs are fulfilled
to the highest
quality

Resin Flooring, Sealing & Dustproofing

Adomast manufactures and supplies an extensive range of high performance polymer coatings for the surface sealing of concrete and other porous masonry surfaces.

They are designed to penetrate, seal and protect the surface by forming a tough, durable and chemical resistant barrier layer or film. These coating compounds are based on high performance polyurethane and epoxy resins and are available in water and solvented formats.

We manufacture products which case harden and densify concrete flooring, rendering them harder, more resilient and durable to oil, water and chemical spills. They also prepare the surface for mechanical polishing which gives a high gloss finish.

Resin Flooring, Sealing & Dustproofing

NEW

Adocoat Proflex

High grade and durable damp proof membrane

Adocoat Proflex is a non-VOC, solvent free, professional grade epoxy system. It cures to give a highly durable, flexible coating to provide water vapour and liquid water resistance for the design life of a building structure. Surfaces are primed with Adocoat Proflex Primer, supplied as a premium two-pack system that can be applied to steel, masonry, concrete and damp surfaces. This product may be specified as a general high-performance damp proof membrane to prevent water ingress into subterranean structures. This product's flexibility allows it to be specified into areas of a building structure where differential movement is expected.

■ Sizes: 8kg, 25kg



NEW

Adocoat TFC

Professional waterproof grade epoxy

Adocoat TFC is a non-VOC, solvent free, professional grade epoxy system. It is supplied as a two-pack system and cures to give a highly durable waterproof coating. The product can be specified into most commercial and light industrial applications; it exhibits high substrate adhesion, a broad range of chemical resistance, U.V. resistance and a Class 1 fire rating. It is ideally suited to provide protection against non-potable water, brine, mineral acids, alkalis and plant derived materials such as vegetable oils. The product can be blinded with aggregate to provide a slip resistant surface or a key for rendering etc. Can be applied to steel, concrete and masonry.

■ Sizes: 5L, 20L

■ Class: BS EN 1504-2:2004: Products and systems for the protection and repair of concrete structures

■ Class: BS 476-7:1997: Fire tests on building materials and structures



NEW

Adocoat LS

High performance, low viscosity resin

Adoseal LS is a high performance aliphatic polyurethane resin developed for sealing and protecting porous surfaces. It is a solvent based gloss sealer that has excellent non-yellowing characteristics which means it can be used outdoors. Once dried and cured it creates a highly durable wear layer which is colour free and fully transparent and tack free. It is a high solids but low viscosity resin which makes it easy to apply. The resulting coating offers very good water and stain resistance and it also has good resistance to a wide range of chemicals too.

■ Sizes: 5L, 10L, 15L, 20L, 25L

■ Sizes: 5 m² per litre per coat
(heavy trafficked areas 2-3 coats recommended)



NEW

Epomast WB

Professional waterproof grade epoxy

Epomast WB is a water based epoxy primer & clear sealer which imparts excellent adhesion and damp tolerance. Epomast WB is available as a clear coating.

Pigmented options are available on request.

■ Sizes: 5kg, 15kg

■ Coverage: 5m² per coat.
A second coat should be applied after 16 hours and before a maximum of 48 hours.



AdoFloor Seal & Wall Seal

High performance surface sealer & water repellent

AdoFloor Seal polymeric coating provides a clear, tough and water repellent protection to exterior surfaces, such as concrete, natural stone, brick and block paving. It also binds together surface particles producing a toughened self-cleaning finish and penetrates hair line cracks to provide a flexible seal. It restricts moisture penetration to give excellent resistance to the effects of weathering, atmospheric pollution, and will not yellow after prolonged exposure.

■ **Sizes:** 5L, 20L, 25L, 205L, IBC

■ **Coverage:** 5-7 m² per litre



Adoseal HP

Water-dispersed polyurethane sealer

Adoseal HP is a clear, pre-weighed 2 component, water-dispersed polyurethane sealer designed to protect and seal industrial floors, screeds and concrete surfaces providing a hygienic and durable floor. Adoseal HP is UV Stable and has excellent chemical, stain and abrasion resistance available in matt and satin finishes. Tack free in one hour and light foot traffic after 6 hours & wheeled traffic after 24 hours.

■ **Sizes:** 5L

■ 4 hour pot life once mixed

■ **Coverage First Coat:** 8-10m² per litre

■ **Subsequent Coats:** 10-15m² per litre



Adotuf

Concrete surface hardener & dustproofers

Adotuf is a liquid silicate solution which when applied to cement bound floors case hardens the surface, rendering it dust proof even when subjected to wire brushing. Adotuf will also impart oil, grease and dilute acid resistance to the floor. The treated floor becomes more durable and longer lasting and is easier to clean.

■ **Sizes:** 5L, 20L, 25L, 205L, IBC

■ **Coverage:** 5-7m² per litre



Adotuf Lithium

Lithium silicate solution for case hardening & polishing concrete floors

Designed for densifying, dustproofing and sealing concrete floors, and is especially suitable for those which are being highly polished afterwards. This penetrating lithium silicate solution chemically reacts with the concrete to produce insoluble calcium silicate hydrate within the concrete pores. Reduces application time and costs of diamond polishing operations to help create a highly glossy concrete floor.

■ **Sizes:** 5L, 20L, 25L, 205L, IBC

■ **Coverage:** 10m² per litre

■ Non-hazardous & environmentally friendly



Resin Flooring, Sealing & Dustproofing

Epomast Ultracoat

High performance surface sealer & water repellent

Rapid curing, solvent free and protective surface coating. Outstanding resistance to aggressive mineral acids, polar solvents and alcohols. A tough, durable and highly abrasion resistant coating which has excellent adhesion to concrete and steel. Typically used as an internal lining coating for storage tanks / chemical bunds or as a highly chemical resistant coating for floorings. The resultant coating is hygienic and easily cleaned and slip resistant options are available too.

- **Sizes:** 5kg, 15kg
- **Rapid cure time**, even at low temperatures
- **Coverage:** 5kg pack will treat 8.5m² of surface



Resoseal

Polyurethane resin for sealing concrete floors & surfaces

Resoseal is an air drying solution of polyurethane resins and wetting agents designed to penetrate into concrete floors filling the surface pores and capillaries. It dries at ambient temperatures to provide a well bonded, hard wearing sealing coat. Resistant to abrasion, sealed against ingress of fluids and with increased resilience to spillage from a wide range of chemicals.

- **Sizes:** 5L, 20L, 25L
- **Coverage:** 5m² per litre



SafeBlock Seal

High performance, water based block paving & surface sealer

SafeBlock Seal is a blend of high performance polyurethanes and acrylic resins formulated for sealing concrete surfaces, blocks and paving. It forms a film after the evaporation of water. The film is clear and highly resilient. SafeBlock Seal penetrates and seals paving surfaces to protect against the effects of weathering.

- **Sizes:** 5L, 20L, 25L, 205L, IBC
- **Coverage:** 5-7 m² per litre



SafeFloor Seal & Wall Seal

High performance, water based concrete sealer

SafeFloor Seal & Wall Seal are water based and non-toxic blend of high performance polymeric coatings which form a highly durable and protective film on concrete surfaces. SafeFloor Seal & Wall Seal once applied increases the surface abrasion resistance, provides excellent dustproofing resistance, protects against the effects of weathering and is suitable for both interior and exterior applications.

- **Sizes:** 5L, 20L, 25L, 205L, IBC
- **Coverage:** 4-6m² per litre



Waterproofing & Roofing

Adomast offer an extensive range of bitumen & asphalt based paints and coating compounds, developed to protect construction and metallic surfaces from the weather by providing highly effective waterproof and corrosion protection.

We supply primer products for initial treatment of less porous surfaces, felt adhesives to aid bonding of roofing felt to all construction surfaces and even aluminised coating to reflect damaging UV light to exposed surfaces and roofs.

We also manufacture a very high performing waterproofing, oil repellent and anti-graffiti surface treatment, which allows the concrete to breathe but protects the surface against damage from rain, soil and oils. This also enables the surface to be quickly and easily cleaned.

Our product range is easy to apply, suitable for both indoor and outdoor use, and can be used on both vertical and horizontal surfaces.

Waterproofing & Roofing

NEW Adoprufe 9005

Ultra-fine mortar for filling surface blowholes

Adoprufe 9005 is a high performance reactive Integral water repellent and efflorescence reducer for concrete. Implementation in a wide range of application including block paving, concrete bricks and blocks, precast concrete, external renders, and mortars. This is a reactive liquid emulsion admixture, designed to impart a high degree of water repellence in concrete mixes, significantly reducing water absorbency. While the concrete is still breathable, allowing water vapour to permeate through.

■ Sizes: 5L, 20L, 25L, 205L, IBC

■ Typical dosage rate: 0.25-2.0%



NEW Adocoat HPW

Durable, waterproof roof repair

Adocoat HPW is an acrylic roof coating based on a flexible thermoplastic resin. It forms a tough, fibre-reinforced waterproof membrane that seals and protects roofs from weathering and water ingress. When dry, the product forms an odourless and taint-free film. It can be used with a wide variety of substrates such as: asphalt (bitumen), roofing felt, asbestos, rigid PVC, concrete, cement, iron, lead, zinc, aluminium, tiles and slate. This product can also be applied in adverse weather conditions and to damp substrates making it ideal as an emergency roof repair product. It is compatible with most types of gutters and flashings. If using on a roof or balcony subject to heavy traffic or the placing of objects such as furniture then promenade tiles or similar protection must be laid over the coating.

■ Sizes: 20L



NEW Industrial Cutback Bitumen

Medium viscosity bitumen waterproof paint

Adocoat Industrial Bitumen Cutback is a medium viscosity bitumen reduced with a C9-C12 petroleum derived hydrocarbon. It is black in appearance, compatible with a number of substrates and can be specified as a highways/civil engineering grade cutback. It can be applied as a single coat in certain applications but two coats is universally recommended. Performance is improved where the second coat is applied leave 2-4 hours before overcoating with the second coat. A touch test on the 1st coat will indicate readiness.

■ Sizes: 5L, 25L, 205L

■ Coverage: 6m²/litre per coat is recommended



Adocoat Bitumen Paint

Bitumen based waterproofing paint

Adocoat Bitumen Paint is a high bitumen content and a high performance solvent based protective coating. It is readily applied and imparts excellent adhesion to a wide variety of surfaces. The paint provides an effective waterproof, weatherproof, corrosion resistant protective coating for steelwork, concrete and potable water tanks. Resistant to low concentrations of alkalis, acids and can withstand prolonged oxidation.

■ Sizes: 5L, 25L

■ Coverage: up to 10m² per litre



Adocoat Bitumen Paint Primer

Solvent based bitumen surface primer coating

A high quality, deep penetrating, bituminous paint for priming surfaces prior to the application of bituminous materials, coatings and / or flashing tapes. The heavy duty formula makes it ideal to prime concrete roofs and floors, cementitious screeds / renders, bitumen felt, weathered bitumen, mastic asphalt, weathered, corrugated iron and steel.

- **Sizes:** 5L, 25L
- **Coverage:** 6–8m² per litre



Adocoat B.M.S

Chemically modified bituminous coating

Adocoat B.M.S can be applied as a sandwich membrane, to act as a waterproofing layer in above and below ground structures of concrete, brickwork, blockwork, masonry or to form a DPM for solid floors. The product is rubber and resin modified for improved aging and gas resistance properties. It is compatible as a waterproof protective coating for a wide variety of substrates (iron, steel, lead, zinc, aluminium etc). When dry, the product forms an odourless and taint-free black film.

- **Sizes:** 5L, 25L
- An effective radon gas barrier
- **Application:** 0.8mm dry film thickness in two coats, typically 1.5–2m² per litre per coat



Adocoat Felt Adhesive

Bitumen based adhesive for bonding waterproof felts

Adocoat Felt Adhesive is a cold applied, black oxidised bitumen based adhesive used to impart a very high bond strength for bonding felt to itself, concrete, asphalt, metal, wood and similar surfaces. It is also suitable for use as a cold gritting solution for bonding chippings to final layer of felt.

- **Sizes:** 5L, 25L
- **Coverage:** 2–3 m² per litre



Adocoat C40B4 (K-140)

K-140 bitumen emulsion tack coat

C40B4 (K1-40) is a conventional cationic bitumen emulsion which complies with grade K1-40 of BS 434-1 and grade C40B4 of BS EN 13808. Designed as a tack coat for use in the construction and repair of pavements, driveways, roads and highways. C40B4 is a rapid setting emulsion, primarily designed to provide an adhesive bond between existing surfaces and bituminous overlays e.g. hot rolled asphalt, macadam and slurry seals, or between courses in road construction.

- **Sizes:** 25L, 205L
- **Coverage:** 0.5–2m² per litre



Waterproofing & Roofing

Adocoat C60B4 (K-160)

K-160 bitumen surface dressing & patching compound

Adocoat C60B4 (K1-160) is a cationic bitumen emulsion which complies with grade C60B4 of EN 13808:2005. Adocoat C60B4, because of its higher bitumen content, is generally used for surface dressing, patching, re-tread and other similar applications.

■ Sizes: 25L, 205L

■ Coverage: 0.8-1.5 m² per litre



Adocoat LAC - All Weather

Liquid asphaltic based compound for waterproofing

Bitumen based compound for application as a damp proof membrane in solid floor construction, sandwiching damp proof membranes under concrete and roof screeds, external waterproofing to buried concrete or as a tanking membrane. Adocoat LAC can be used all year round. Adocoat LAC is not recommended for use in exposed applications.

■ Sizes: 5L, 25L

■ Coverage: 1.5-2.5m² per litre



Adoguard HD

Surface waterproofing & anti-graffiti treatment

Adoguard HD is a custom blend of speciality water based polymers and technologies to create a combined protective surface treatment offering water, oil / soil repellence and anti-graffiti protection. Adoguard HD has been designed for use on concrete, brick, stone and other porous surfaces.

■ Sizes: 1L, 5L, 20L, 25L, 205L

■ Coverage: 3-5m² per litre



Adocoat Emulsion

Bitumen rubber latex waterproof coating

Adocoat is an alkali resistant cold applied rubberised bitumen emulsion which imparts excellent adhesion to sound building materials, including asphalt and retains its flexibility in low temperatures while being resistant to softening in warm conditions. Adocoat is used to provide a flexible waterproof membrane on most building surfaces.

■ Sizes: 5L, 25L, 205L

■ Coverage: 1.0-1.5m² per litre



Aluminium Paint for Roofs

Highly concentrated silver pigmented bituminous UV protective coating

Economical, highly flexible, solar reflective coating suitable for application to bitumen based roofing felt. It imparts excellent durability and protection against UV degradation and weathering to the roof. Suitable where bituminous exteriors, exposed steel and corrugated iron surfaces that are directly exposed to sunlight & standing rain water. It creates a brilliant silver finish that is highly weather resistant.

- **Sizes:** 5L, 25L
- **Coverage:** 10m² per litre



Aquabar

Flexible hydrophilic strip which expands & seals when wet

Flexible and expanding hydrophilic waterstop. Developed for use in concrete structures at joint locations, where the Aquabar expansion fills any minor voids in the concrete surrounding the water bar, preventing the passage of water across the plane of the joint. Installation on site is simple and requires no site welding at corners or intersections. Aquabar is easily kneaded together to give continuity through the longest lengths. An ecological and user friendly product that is easy to install by use of either gun-nailing or gluing with Aquabar Mastic.

- **Sizes:** 10mm, 20mm
- **Coverage:** 10mm or 20mm of 7 & 10 metre reels – Pack Size 80m per box



Aquabar Mastic

PU based swell mastic & adhesive

One-component swelling waterstop sealant that, expands on contact with water. Prior to expansion, it is suitable for bonding to a wide variety of substrates including concrete, rock and metals. Once applied it acts as a high performance water proofing seal for precast applications such as storage reservoirs and utility vaults. Expands up to x2 in volume following contact with water. It is moisture-cured to form a tough hydrophilic rubber elastomer, protecting against joint movement or concrete shrinkage.

- **Sizes:** 310mm
- **Supplied:** as a gun-grade form
- **Coverage:** 310ml Cartridge Pack Size 24 per box



Metwash Premium Hand Cleaner

Hand cleaner for removing metal contaminants from skin

Powerful, biodegradable & environmentally safe hand wash for metalworkers, formulated to clean and remove all metal residue from soiled skin and keep it moisturised to prevent the skin from irritation, cracking & chapping.

- **Sizes:** 500ml
- **Coverage:** 10 per box



Waterproofing & Roofing

Patination Oil

Protective film coating for application to exposed lead surfaces

Lead surface treatment which quickly forms a hard-wearing resin that prevents lead carbonate from forming on the surface and additionally helps prevent staining to adjacent building materials. Designed for use on lead roofing, flashings and cladding to give a uniform, attractive appearance where the lead is visible. It is also necessary when water flowing from the Lead Sheet may come into contact with other visible building materials.

- **Sizes:** 0.5L, 1.0L
- **Coverage:** 50m² per litre
- **Easy application**



Adhesives & Primers

Adomast have the latest in adhesive and primer products for the bonding and repair of all types of construction brick, stone and masonry.

We produce rapid setting and high strength cross-linked resins which are highly weather and chemical resistant.

The repair resins are produced for easy mixing and precise, controlled application.

Adomast also produces priming and bonding adhesives, based on aqueous latex technology, that are used for imparting excellent adhesion and waterproofing characteristics to repairs in concrete, brickwork, masonry and steel.

Adhesives & Primers

Adobond PVA

Multipurpose adhesive

Concentrated viscous emulsion based on polyvinyl acetate which dries completely colourless. Provides an excellent bond for most common building materials providing at least one of the materials bonded is porous. It can be used to bond all types of wood, veneer and hardboard either to themselves or to other materials. It can also be used to repair holes and cracks in all cementitious mixes.

■ **Sizes:** 5L, 20L, 25L

■ **Coverage:** n/a



Adobond SFR

Cartridge based 2 part styrene free polyester bonding adhesive

High strength, chemical resistant, fast curing anchoring system for bonding either masonry to masonry or for bonding other construction components, such as metal pipework to masonry, brick or pipework etc. Due to the conical mixing spiral dispensing tube supplied it is easy to apply in small and controlled amounts to the bonding surface.

■ **Sizes:** 300ml

■ **Coverage:** See online data sheet for details



Adobond SBR

Latex bonding agent & surface primer & sealer

Styrene-butadiene emulsion which offers excellent adhesion to concrete, brickwork masonry, renders and steel. Applications include waterproofing basement structures, underlying levelling screeds, wear resistant flooring or in concrete repairs. It can also be used as an admixture to improve flexibility, tensile strength and reduce shrinkage.

■ **Sizes:** 5L, 20L, 25L, 205L, IBC

■ **Coverage:** See online data sheet for details

■ Imparts excellent waterproof and weather resistant properties.



Epomast Tack Primer

Solvent free epoxy resin based primer and bonding coat

Epomast Tack Primer has been developed as a primer coating for bonding epoxy repair resins & coatings to concrete. It exhibits outstanding adhesion to concrete & other porous surfaces. It is an ideal primer / adhesive for bonding new concrete to old. Also offers a protective treatment to exposed steel re-enforcement during concrete repair.

■ **Sizes:** 1kg, 5kg

■ **Coverage:** 3-6m² per kg

■ Solvent free / low odour

■ **Adhesion to concrete:** 3.8 MPa (concrete failure)



Epoxy & Polyester

Adomast supply an extensive range of professional high performance coatings and repair products based on epoxy and polyester resin technology. These products are designed for application onto cementitious based substrates and to steel.

Our range of solvent free, water based protective coatings and sealers offer exceptional water, and chemical resistance along with excellent levels of adhesion and durability to most construction surfaces.

The products can be used as high performance damp proof membranes, for flexible protective coatings for flat roofs and for the protection of flooring, tanks and bunds.

All our Epoxy & Polyester products are supplied in pre-weighed containers to make mixing and application a breeze.

Epoxy & Polyester

NEW

Adocoat Proflex

High grade and durable damp proof membrane

Adocoat Proflex is a non-VOC, solvent free, professional grade epoxy system. It cures to give a highly durable, flexible coating to provide water vapour and liquid water resistance for the design life of a building structure. Surfaces are primed with Adocoat Proflex Primer, supplied as a premium two-pack system that can be applied to steel, masonry, concrete and damp surfaces. This product may be specified as a general high-performance damp proof membrane to prevent water ingress into subterranean structures. This product's flexibility allows it to be specified into areas of a building structure where differential movement is expected.

■ Sizes: 8kg, 25kg



NEW

Adocoat TFC

Professional waterproof grade epoxy

Adocoat TFC is a non-VOC, solvent free, professional grade epoxy system. It is supplied as a two-pack system and cures to give a highly durable waterproof coating. The product can be specified into most commercial and light industrial applications; it exhibits high substrate adhesion, a broad range of chemical resistance, U.V. resistance and a Class 1 fire rating. It is ideally suited to provide protection against non-potable water, brine, mineral acids, alkalis and plant derived materials such as vegetable oils. The product can be blinded with aggregate to provide a slip resistant surface or a key for rendering etc. Can be applied to steel, concrete and masonry.

■ Sizes: 5L, 20L

- **Class:** BS EN 1504-2:2004: Products and systems for the protection and repair of concrete structures
- **Class:** BS 476-7:1997: Fire tests on building materials and structures



NEW

Epomast WB

Professional waterproof grade epoxy

Epomast WB is a water based epoxy primer & clear sealer which imparts excellent adhesion and damp tolerance. Epomast WB is available as a clear coating.

Pigmented options are available on request.

■ Sizes: 5kg, 15kg

■ **Coverage:** 5m² per coat.

A second coat should be applied after 16 hours and before a maximum of 48 hours.



Epomast DPM

High performance epoxy resin based surface damp proof membrane

Epomast DPM is a two-pack, solvent free epoxy based damp-proof membrane for use with the Adoscreed range of surface coatings and toppings. It suppresses residual construction moisture and rising dampness in concrete and sand/cement screeds and can be used in situations where the relative humidity level is above 75%.

■ Sizes: 5kg, 10kg

■ **Coverage:** 30-40 m² per litre

■ **Bond strength:** (EN 13892) >2.0 N/mm²

■ **Curing Time:** 18 hours before carrying out any further operations



Epomast Tack Primer

Epoxy resin based primer coat

Epomast Tack Primer has been developed as a primer coating for bonding epoxy repair resins & coatings to concrete. It exhibits outstanding adhesion to concrete & other porous surfaces. It is an ideal primer / adhesive for bonding new concrete to old. Also offers a protective treatment to exposed steel re-enforcement during concrete repair.

- **Sizes:** 1kg, 5kg
- **Coverage:** 3-6m² per kg
- Solvent free / low odour
- **Adhesion to concrete:** 3.8 MPa (concrete failure)



Epomast Ultracoat

Two-part epoxy resin paint /coating

Epomast Ultracoat is a rapid curing, two pack, solvent free Epoxy coating with outstanding resistance to aggressive acids, solvents and alcohols, e.g. 96-99% Sulphuric Acid, Methyl Ethyl Ketone and Methanol. Typical Uses; As an internal lining for concrete or steel storage tanks; chemical bunds, chemical resistant floor/wall coating for chemical and printing works, bottling and canning factories, pharmaceutical production, etc.

- **Sizes:** 5kg, 15kg
- **Pot life @20°C:** 30 Mins @10°C: 60 Mins
- **Application rate:** 1.7m² per kg (5kg will cover 8.3m²) 2 coats recommended (dft of 500 microns)





Westbourne Park Tunnels - photo courtesy of Crossrail Westbourne Park Tunnels

Cleaners & Maintenance

Adomast believe that keeping construction equipment, plant-work, and tools in top condition is vital in getting the best performance out of construction chemicals. Therefore Adomast manufacture a product range designed specifically for the cleaning of construction tools and equipment after use.

We provide solutions for the cleaning of tools that have been using polymeric resins, for the removal of oil stains from concrete, and for the cleaning and flushing-out of spray applicators. We also manufacture environmentally safe products for stopping concrete from drying out & building up on plant work and mixing equipment, allowing easy clean and removal afterwards.

We manufacture protective coating for plant going into storage or transit, and lubricants for protecting against adverse weather or preventing corrosion.

Cleaners & Maintenance

NEW

Adoclean AR Plus

Effective industrial degreaser agent

Adoclean AR Plus is a very powerful industrial degreasing agent for removal of oil, grease, corrosion protection agents and other hard-to-remove contaminants. Adoclean AR- Plus is applied in the cleaning of metal parts, machines, pumps & blending tanks, floors in industrial production areas, trucks, etc. Adoclean AR- Plus is applied in concentrated form at room temperature. This product has no flash point making it safe to use in a production environment, non-flammable and low odour.

■ Sizes: 1L, 5L, 10L, 15L, 20L, 25L



NEW

Adoclean Bio

Environmental friendly cleaner and release agent

Adoclean Bio is a low odour vegetable based cleaning & release agent for the asphalt & bitumen industry. Mixture includes natural fatty acid esters & strong solvents with a high flash point with excellent environmental properties. A great alternative to white spirit, de-aromatized hydrocarbons, diesel and other standard solvents used for cleaning asphalt & bitumen residues, ideal for cleaning metal surfaces. The product can also be used as a lubricant / release agent on machinery and transport equipment.

■ Sizes: 1L, 5L, 10L, 15L, 20L, 25L



NEW

Degreaser & Bitumen Remover

Environmental friendly cleaner and release agent

Adomast Degreaser & Bitumen Remover is an optimised combination of surfactants, ester solvents and coupling agents. The product forms the basis of high-performance degreasers for removal of oil, bitumen and greasy residues. It has an exceptional all-round cleaning profile and is a serious alternative to cold-cleaners based on hydrocarbon solvents, hydrocarbon-based microemulsions and high-alkaline cleaners. Adomast Degreaser & Bitumen Remover is formulated with sequestering agents to form efficient cleaners with no VOC content and no CLP label.

■ Sizes: 1L, 5L, 10L, 15L, 20L, 25L



NEW

Adowax Bio

Biodegradable protective wax coating

Adowax Bio is a ready to use, biodegradable brush applied protective wax coating & formwork release agent. This is a blend of selected temperature resistant wax and a biodegradable oil. It has been designed to give maximum protection to steel and other metals against rust and all year round weather effects. It is also ideal for protecting formwork when in storage or not in use. It is easily applied with a soft brush or lint free cloth and can be used when mould release agent where the use of liquid release oil is not practical.

■ Sizes: 5kg, 20kg

■ Coverage: 10 - 12m² per kilo





Deactivator Bio

Suitable for use on all formwork type, very high quality finish

Size: 5L, 20L, 25L, 205L, IBC

Deactivator Bio can also be applied to construction and plant equipment, to create a thin high performance barrier layer that protects the equipment from concrete splashes and makes the cleaning process much easier and faster. Completely odourless and VOC free formwork release agent that is almost colourless which makes it ideal for fairfaced, white and GGBS blended concrete. It is fully biodegradable with suitable for every type of formwork, it brings a very high-quality architectural finish that is blow hole free.



Adoclean

Brick acid, concrete cleaner / remover

Adoclean is a selected blend of inorganic acids for the removal of mortar splashes from brickwork and rust from a wide range of surfaces.

Ferrous metal objects treated with Adoclean are left with a lightly phosphated surface providing added protection against further rusting.

Sizes: 5L, 20L, 25L, IBC

Coverage: n/a



Adoclean Gel

High performance mineral acid-based construction surface cleaner

A blend of organic acids that is supplied in a stable gel form. Designed to remove efflorescence, mortar slashes and rust stains from a wide range of surfaces. Brush applied to a vertical surface, the acid compound will cling to the surface and not sag or fall away. This means that it will penetrate and clean the surface far more efficiently and effectively. Being in a gel form, the product is easier & safer to handle.

Sizes: 5L, 25L

Easy to apply and clean away afterwards

Coverage: 10mm or 20mm of 7 & 10 metre reels – Pack Size 80m per box



Adoclean Patio & Path

Cleaner for blocks, paving and concrete

Adoclean Patio & Path is a blend of dilute acids developed for the removal of stains, grime, rust, algae and limescale from a wide range of paving surfaces.

Sizes: 5L, 20L, 25L, IBC

Coverage: n/a



Cleaners & Maintenance

Adosafe Clean Gel

Powerful gel based cleaning compound for removal of rust and efflorescence

Powerful acid based cleaning compound. Developed to replace traditional highly corrosive, strong mineral acids to facilitate the safe, non-hazardous cleaning and removal of dry & hardened concrete, efflorescence and tar deposits from most surfaces without damaging or corroding the surface. Supplied in a gel form so it can be applied and bond to vertical surfaces without sagging, allowing it to penetrate and clean the surface more effectively and efficiently.

- **Sizes:** 5L, 20L
- **Coverage:** 2-4 m² per litre
- Non corrosive on metals & coatings
- Suitable for use on stone, tiles and other porous substrates



Adowash

Solvent based cleaner for application sprayer

Adowash has been developed for the cleaning of sprayers and other equipment that has been used with film forming resins or oil based mould release agents. It helps prolong the life of the sprayer and other valuable equipment and ensures that the proper spray patterns and dose rates are adhered to.

- **Sizes:** 5L, 20L, 25L, 205L, IBC
- **Coverage:** n/a



Deactivator

Plant and equipment protective compound

Deactivator is a blend of fatty acids dispersed in a vegetable oil base and is used to prevent concrete build up on plant and machinery via the formation of calcium soaps which act as a barrier protective layer when in contact with cementitious material.

- **Sizes:** 5L, 20L, 25L, 205L, IBC
- **Coverage:** 3-5m² per litre



Resoklens

Cleaning solvent for resin based products

Resoklens is a specially formulated solvent for cleaning resin based products from tools and equipment before the resin has hardened, and for removing any residual release agent from formwork.

- **Sizes:** 5L, 20L, 25L, 205L, IBC
- **Coverage:** n/a



Safclean

Cleaning & preservative for scaffolding clips & fittings

Safclean has been formulated to be used in the cleaning of scaffold and other fittings. It quickly frees rusted threads to allow easy movement and leaves a light oily residue to reduce rusting in storage and use.

- ▣ **Sizes:** 5L, 20L, 25L, 205L, IBC
- ▣ **Coverage:** 3-5m² per litre



Styroklen

Solvent emulsifier for expanded polystyrene

Styroklen is a specially formulated solvent developed to safely dissolve away and emulsify unwanted polystyrene box outs, void formers and inserts.

- ▣ **Sizes:** 5L, 20L, 25L, 205L, IBC
- ▣ **Coverage:** n/a





Kirtling Street - photo courtesy of Tideway Media Team

Screeding

Adomast has a range of product to use in conjunction with a freshly screeded floor.

We have a wide range of products to boost the performance of a newly screeded floor.

The products include high performance primers, damp proof membranes, surface curing compounds and sealers.

These all offer high performance and will enhance the durability and protection of the floor. Our products can be used in both commercial and industrial environments.

Screeding

Adoscreed Fastpatch

Rapid & permanent repair to concrete & masonry surfaces

High Strength, trowel applied, two component, pre-weighed Epoxy resin patch repair mortar, designed for rapid and permanent repairs to concrete and masonry surfaces. Adoscreed Fastpatch quickly cures to form a highly durable, abrasion and chemical resistant repair.

■ Sizes: 10kg

■ Coverage: 0.5m² at 5mm thickness



Adoscreed Safeseal PU

Water based concrete sealer

Non-hazardous, low odour, water based and durable film-forming polyurethane coating designed for curing, sealing, dustproofing and hardening concrete floor surfaces. Safeseal PU helps increase the surface abrasion resistance, improves the stain resistance and helps protect against the effects of weathering. Suitable for both interior and exterior use.

■ Sizes: 5L, 10L, 20L

■ Coverage: First Coat 3-5m²/litre optional second coat 5-7m²/litre



Adoseal HP

Water-dispersed polyurethane sealer

Adoseal HP is a clear, pre-weighed 2 component, water-dispersed polyurethane sealer designed to protect and seal industrial floors, screeds and concrete surfaces providing a hygienic and durable floor. Adoseal HP is UV Stable and has excellent chemical, stain and abrasion resistance available in matt and satin finishes. Tack free in one hour and light foot traffic after 6 hours & wheeled traffic after 24 hours.

■ Sizes: 5L

■ 4 hour pot life once mixed

■ Coverage First Coat: 8-10m² per litre
Subsequent Coats: 10-15m² per litre



Crack Repair SFR

Styrene free polyester bonding adhesive

Crack Repair SFR is a high strength, fast curing 2 part polyester resin repair system for quickly repairing cracks, surface shrinkage and damage to floor surfaces. Easy to apply and hardens in less than 25 minutes.

■ Sizes: 300ml

■ Coverage: n/a



Epomast DPM

High performance epoxy resin based surface damp proof membrane

Epomast DPM is a two-pack, solvent free epoxy based damp-proof membrane for use with the Adoscreed range of surface coatings and toppings. It suppresses residual construction moisture and rising dampness in concrete and sand /cement screeds and can be used in situations where the relative humidity level is above 75%.

- **Sizes:** 5kg, 10kg
- **Bond strength:** (EN 13892) >2.0 N/mm²
- **Coverage:** 30–40 m² per litre
- **Curing Time:** 18 hours before carrying out any further operations



Screed Cure ER

Surface evaporation retarder & curing aid

Applied to a freshly laid screed, Screed Cure ER helps reduce surface moisture evaporation to produce a high quality, crack and dust free concrete surface. Spray applied to the surface it quickly forms a very thin protective barrier layer on the surface of the fresh screed to help reduce surface shrinkage and prevents dusting and cracking.

- **Sizes:** 5L, 10L, 20L
- **Coverage:** 25–30m² per litre



Screed Primer A

Acrylic primer & adhesion solution for concrete sealing & repairs

Screed Primer A is designed to improve the adhesive bond of cement-based floor screeds. A water based milky white dispersion of acrylic polymer designed to give maximum penetration into the base substrate to optimise the adhesion of a freshly applied concrete screed.

- **Sizes:** 5L, 10L, 20L
- **Coverage:** Approx 3m² per litre





Whatever your
requirements
Adomast are
happy to talk you
through any of
our products,
anytime

Adomast
Alisdair McQueen

Complementary Products

Adomast hold stock of auxiliary products used in the construction industry including de-bonding paints for easy dowel bar extraction from cast concrete.

During the winter months we manufacture screen wash and antifreeze to help keep construction moving on the road.

Adomast also stocks different sizes of spraying units for the application of mould release agents and other low viscosity resins. We also hold stock of spare parts for the spraying units.

Complementary Products

Adobreak

Dowel bar de-bonding paint

A bituminous / asphalt based compound which will harden on dowel bars to form a thin plastic sheath, which after casting of concrete will allow the dowel bar to completely break bond with the concrete and allow easy removal.

- **Sizes:** 5L, 25L
- **Coverage:** 1.8–3.6m² per litre



Anti-freeze

Antifreeze solution that works to temperatures below -35°C

A glycol based concentrate suitable for use as an engine coolant and antifreeze. Suitable to be used all year round as an engine coolant with operating temperatures down to -35°C.

- **Sizes:** 5L, 20L, 25L, 205L, IBC
- **Coverage:** n/a



Screenwash

High performance all weather screen wash

Adomast all Season Ready to Use Screen Wash utilises high performance cleaning chemicals efficiently removes dirt, grime and insect deposits from the windscreen. It also helps the water bottle from freezing. Also available in a concentrated form.

- **Sizes:** 5L, 20L, 25L
- **Non-hazardous**



Sprayers

8 litre basic pump sprayer

Standard plastic pump sprayer with GRP lance and lance sprayer nozzle, complete with adjustable shoulder strap.

6 litre professional plastic & metal pump sprayers

Professional pump sprayers in both plastic and metal both with quality brass lance and interchangeable brass nozzles.

16 & 20 litre plastic knapsack pump sprayer

Standard plastic knapsack pump sprayer with GRP lance and plastic sprayer nozzles, complete with adjustable shoulder straps.

Bespoke Products

Had a look through the products and can't quite see what you are after?

Are you in need of a bespoke solution or want us to offer an equivalent to an existing product in the market?

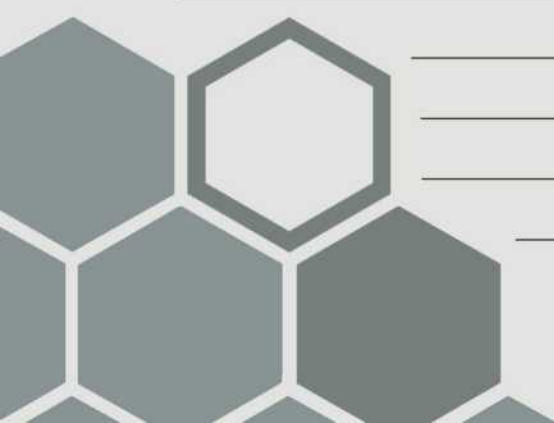
Adomast can quickly adapt our existing products to suit a specific customer application or specification. We can develop and tailor-make an entirely new product grade to satisfy specific and demanding applications.

Development samples are available & can be shipped first for full customer evaluation.

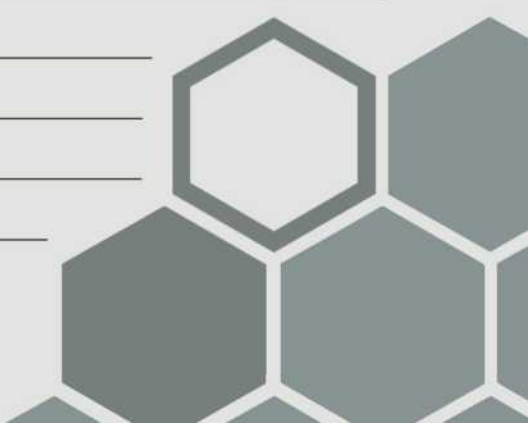
Customer's own labelling service available.

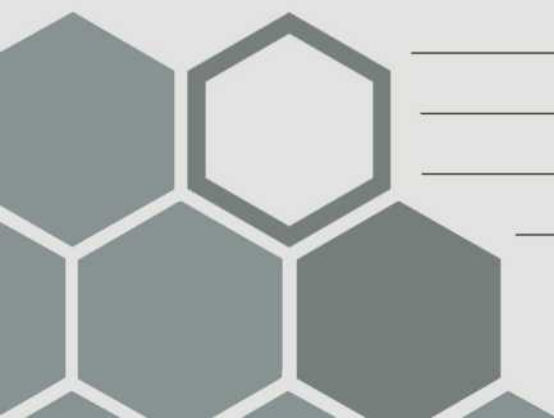
Contact **Adomast** today for more information and find out how we can create a bespoke product for you.

Handwriting practice lines consisting of 28 horizontal lines.



Handwriting practice lines consisting of 4 horizontal lines.



[illegible]

adomast.co.uk

T +44 (0)1226 707 863

F +44 (0)1226 718 051

E info@adomast.co.uk

Adomast Manufacturing LTD

Carlton Industrial Estate,
Barkston Road, Barnsley
S71 3HU, UK



Adomast 