

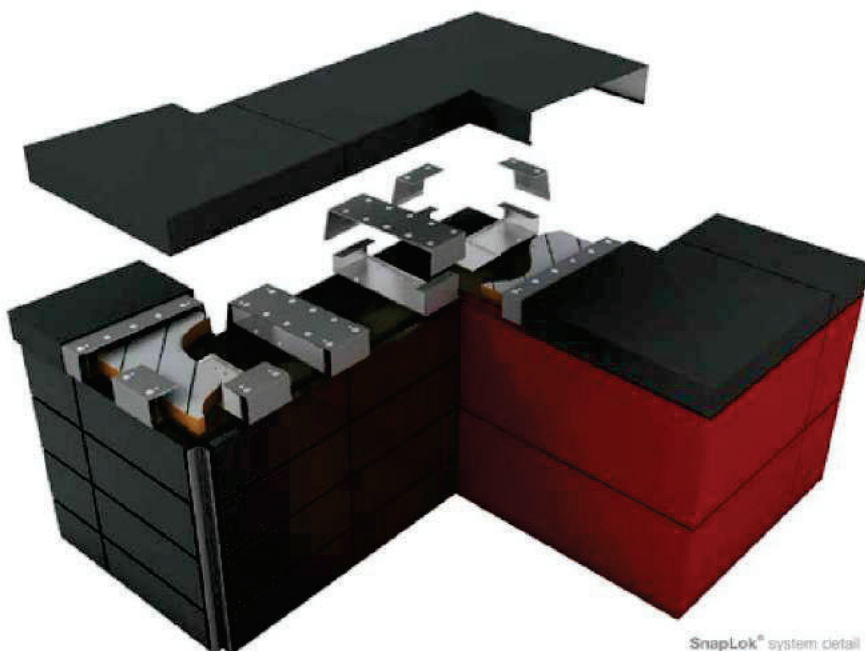
# Hurricane-proof wall capping systems - tested and passed by **ceram**

Ceram is the leading independent global expert in  
materials' testing and analysis.



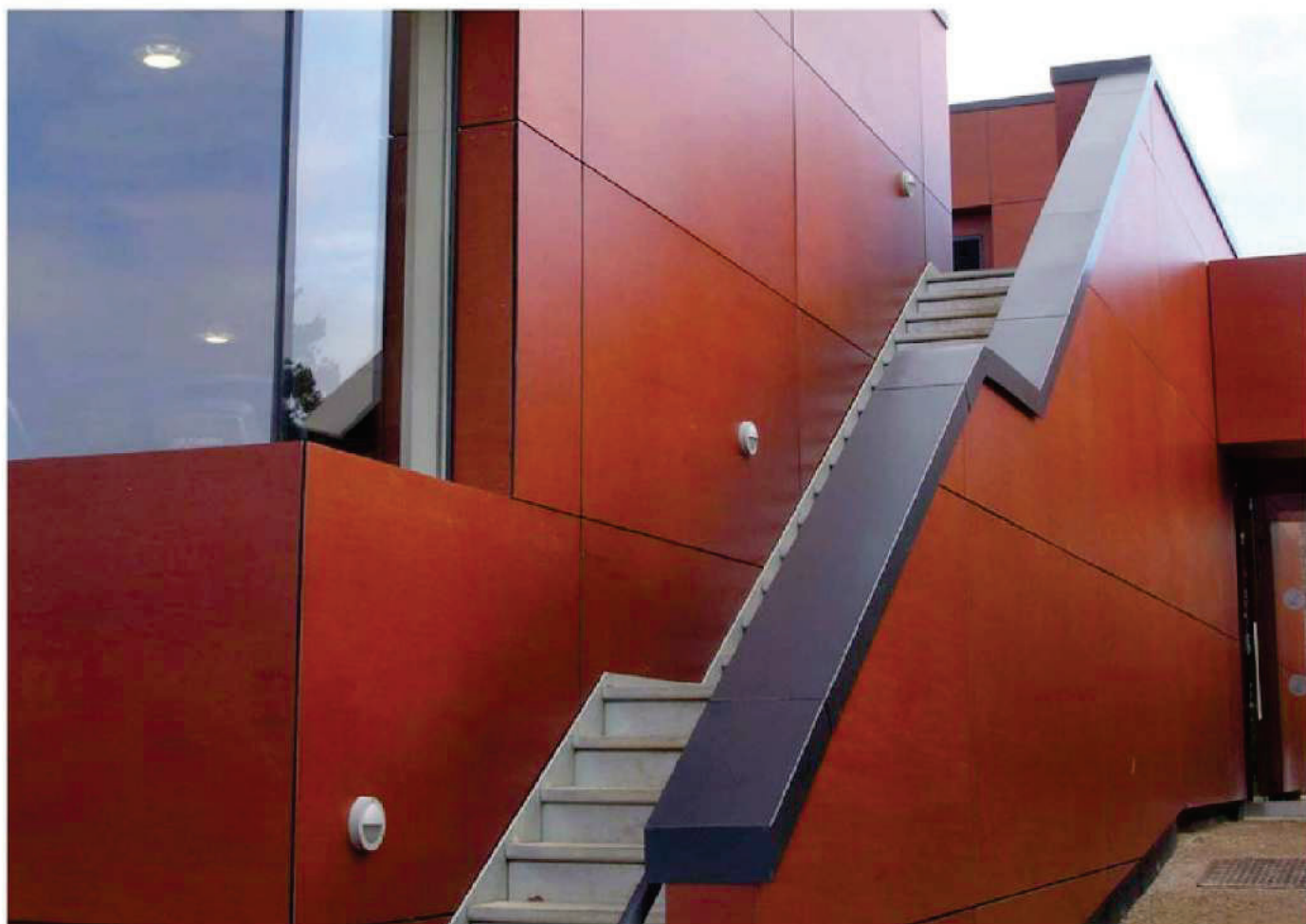
# SnapLok® Wall Capping System

Protecting parapet walls and balustrade walls from the elements is what **SnapLok®** is designed for. Fabricated in straight, T, Z and L components, joints are kept to a minimum. Secured to the wall structure using our unique fixing brackets which eliminate the need for any external visible face fixing, the capping will cope with anything the weather can throw at it - up to hurricane force gales. No other system is tested to this degree.



SnapLok® system detail

Ockenden Hotel,  
Cuckfield



SnapLok® - passed by Ceram for wind upload lifting

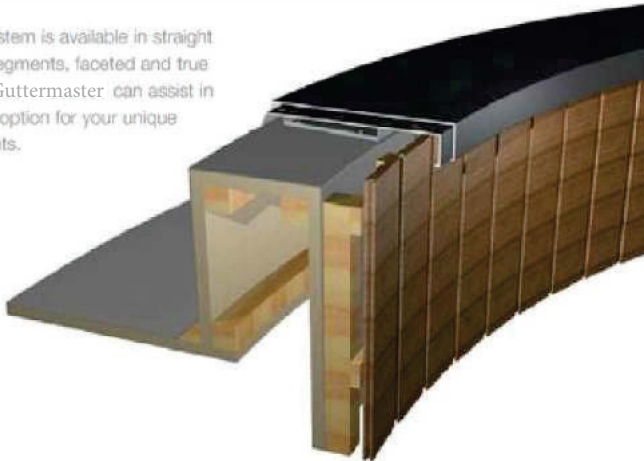
# Wall Capping

---

If all walls were straight and level, life would be simple. SnapLok can meet the challenge of any design whether your walls curve in, slope down or change direction in any three dimensional plane. So no matter how complicated the design - SnapLok® provides an elegant solution.

The upper surface can drain surface water or snow in which ever direction specified through the use of apex or angled cap variations.

The **SnapLok®** system is available in straight lengths, faceted segments, faceted and true curved lengths. Guttermaster can assist in selecting the best option for your unique project requirements.

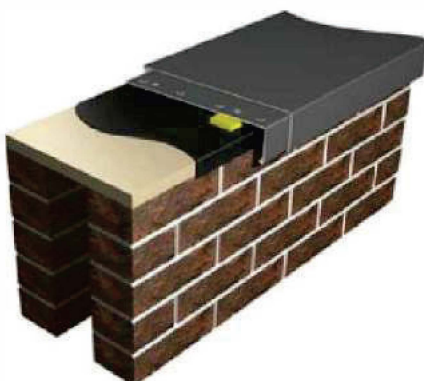


## Wall Capping

Capping type: **SnapLok®**  
wall capping

Material: 2.0, 2.5 or 3.0mm aluminium  
on radiused timber frame  
construction

Considering the varied range of construction techniques available, we have extensive experience in providing robust, tailored support bracket systems based on tried and tested methods.



## Wall Capping

Capping type: **SnapLok®**  
wall capping

Material: 2.0, 2.5 or 3.0mm aluminium  
conventional build with  
capping packed to fall

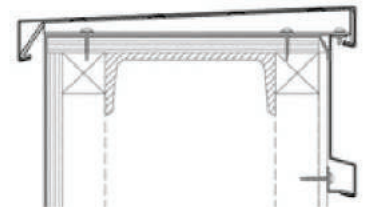
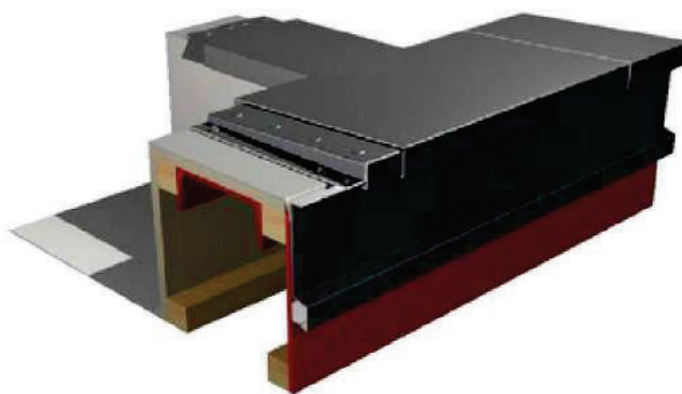
# Wall Capping

---

Applicable to all forms of construction, traditional to leading edge, the SnapLok® system spans wall structures incorporating brick and block, insulated panels and steel frame, timber frame and SIP systems. The design of our SnapLok® bracket allows for secure fixing at the strongest point, whether that's the inner leaf, external leaf or structural frame.

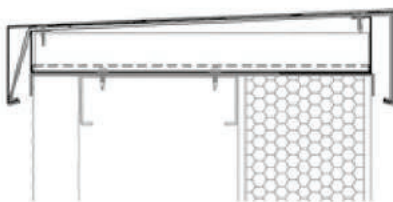
Insulated panelling and cavity voids of all widths are accommodated.

Tested to destruction, the bracket will remain fixed to the capping under the most extreme wind loadings - hurricane and beyond.



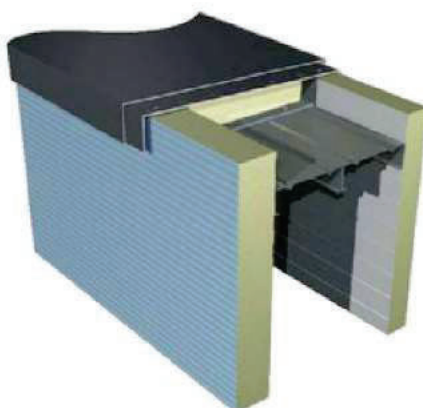
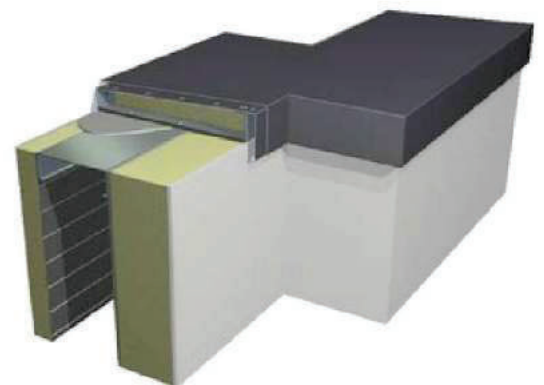
## Wall Capping

Capping type: *T-transition capping*  
Material: 2.0, 2.5 or 3.0mm aluminium angled to apex



## Wall Capping

Capping type: *Z-angle capping*  
Material: 2.0, 2.5 or 3.0mm utilising galvanised steel support bracket



## Wall Capping

Capping type: *Angled capping*  
Material: 2.0, 2.5 or 3.0mm aluminium on a SIPs construction