

SPECIFICATION DETAILS

The MW124 is 125mm in diameter and manufactured from white Epoxy Powder Coated Steel. The valve has a male spigot to fit inside of the duct.

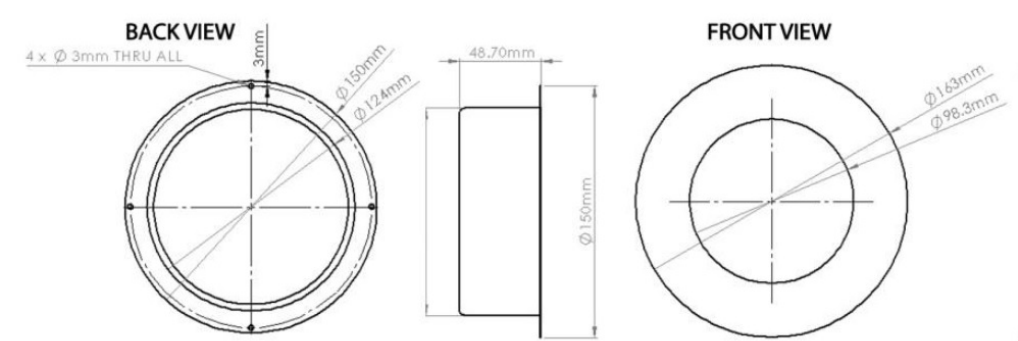
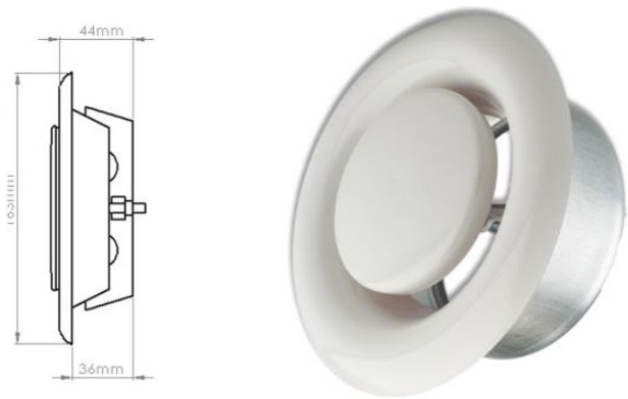
The MW124 supply air valve is fully adjustable and has a locking nut mechanism to fix the position of the control disk upon commissioning.

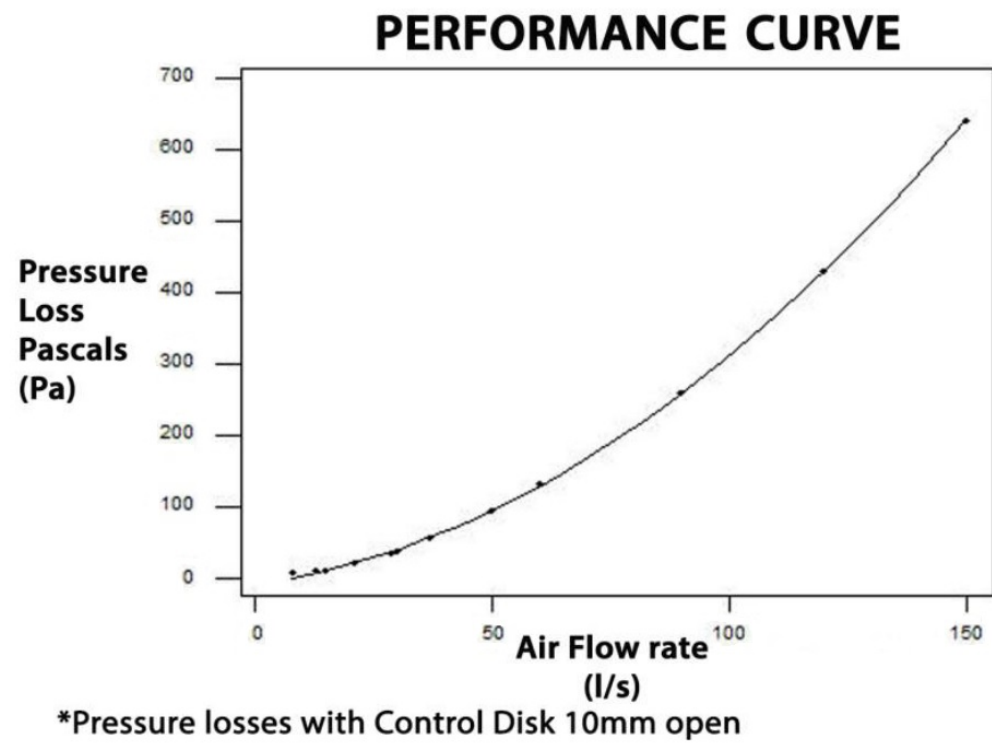
The MW124 is supplied complete with a retaining ring and pre-drilled fixing holes positions to hold the valve in place.

The MW124 has be designed for use with Verplas Sstem 125mm Round.

Max/Min operating temperature - +100 deg C to -20 deg C

Part number	MW124
Size	125mm
Weight	345g
Colour	White





Air Flow	Resistance
8 l/s	6.00 pa
13 l/s	9.50 pa
21 l/s	19.50 pa
30 l/s	36.42 pa
60 l/s	132.00 pa
120 l/s	430.00 pa