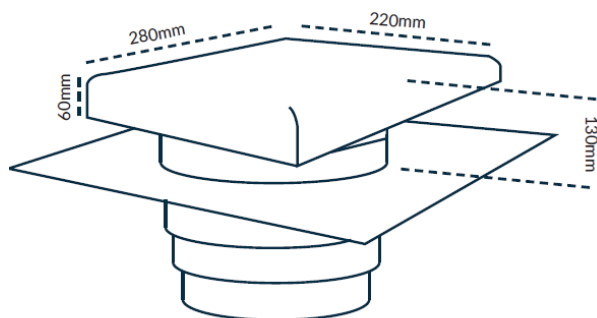
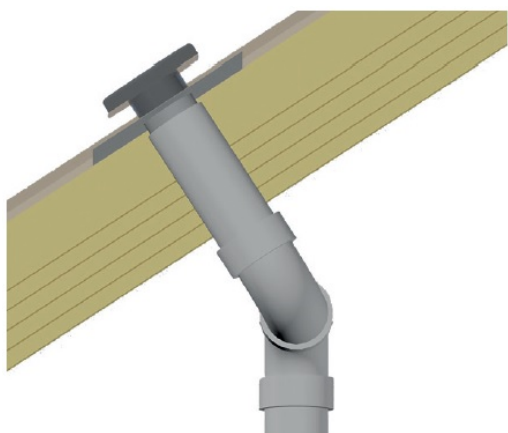


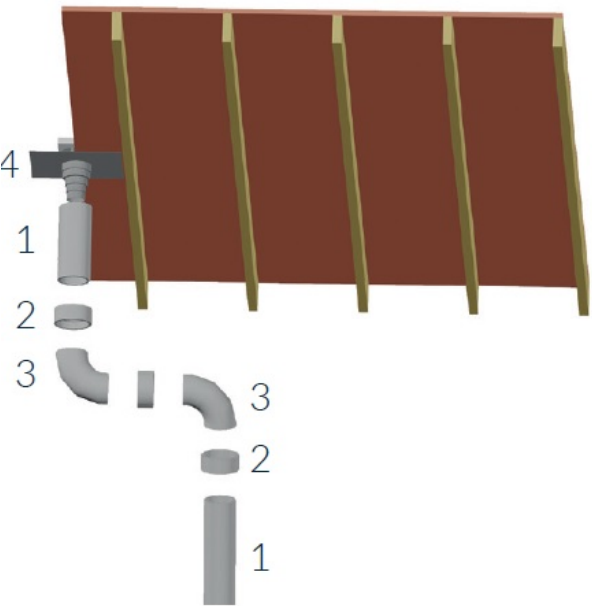
UB41

This UB41 unit comprises a flat box hood on a circular up-stand, a 500 x 500mm lead flashing skirt and stepped adaptor which allows connections from 100mm to 160mm diameter ducting. All cowls and external grilles for ventilation should have a minimum separation of 1500mm-2000mm. In some circumstances this is not possible and can be reduced down to 300mm to meet building regulations.



Cowl - min 22 deg pitch / (150mm / 125mm connector) HR155 / CQ350





- 1. 150mm Comfo Pipe
- 2. 150mm Comfo Pipe collar
- 3. 90 deg 150mm elbow
- 4. UB41

The free vent areas and pressure/airflow resistance readings for the UB41 are below.

In instances where the CQ450 and CQ600 are used we have 2 x UB41 for the fresh air, and 2 x UB41 for the exhaust. The main duct-work uses a Y splitter from the 180mm duct-work to 2 x 150mm to provide the correct flow rate.

Diameter (mm)	Free vent (mm2)	Pressure/Airflow	
		Resistance (100m3/h)	(Pascals) (225m3/h)
100	7,850	3.0	7.5
110	8,850	4.5	16.0
125	12,250	5.3	24.0
150	17,775	6.5	31.0

OTF4A

Flat roof.

Min 300mm distance between fresh air exhaust. Both Cowling's must be fitted on the same elevation or roof pitch.

