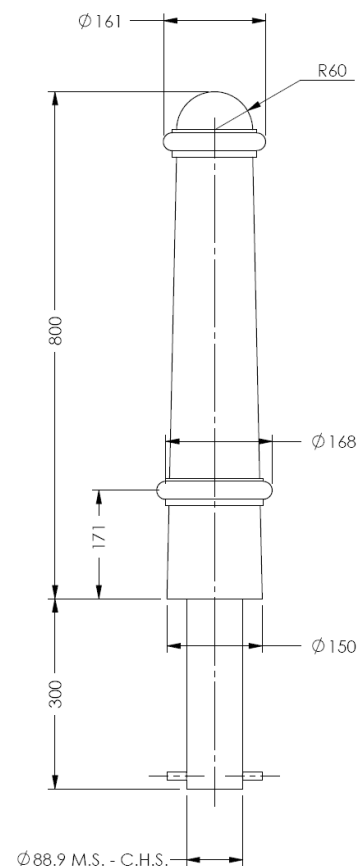




# Delaval 800mm Polyurethane



Traditional and sturdy in design, the Delaval Polyurethane Bollard provides a simple, yet elegant, parking and access control solution. Ideal for use individually, or as a part of a wider traffic calming measure, they are suitable for a range of locations.

Corrosion and shatter proof, these bollards are cast in an engineering grade, heavy duty polymer around a steel core.

Available concrete in and black only, polyurethane bollards are a highly durable like for like replacement for traditional cast iron bollards.

**Part Number**  
138 124 090

**Description**  
Delaval

**Weight (kg)**  
16kg

## Product details

- Available concrete in only
- 168mm maximum diameter
- Concrete in 300mm (below ground)
- 89mm core diameter

## Installation & use

Bolt down to a suitable concrete surface.  
Telescopic, removable and concrete in are supplied with welded fixing spikes to ensure firm ground anchorage into concrete.  
Telescopic, removable and concrete in require a suitable excavated hole for installing into concrete.  
Products are guaranteed for 12 months (if installed and used correctly).



[www.autopa.co.uk](http://www.autopa.co.uk)  
+44 (0)1788 550556

AUTOPA Limited  
Cottage Leap, Rugby, Warwickshire CV21 3XP

