

**alsan**  
by SOPREMA



**LIQUID**  
WATERPROOFING

**ALSAN 770** PMMA  
**ALSAN 601**  
POLYURETHANE



**SOPREMA**  
GROUP

# ALSAN LIQUID WATERPROOFING

## AN INTRODUCTION...

Alsan liquid waterproofing technology; rapid-curing, cold-applied liquid resins, designed for a variety of seamless roofing, waterproofing and surfacing applications.







# ALSAN LIQUID WATERPROOFING LIQUID TECHNOLOGY



## WATERPROOFING EXPERTISE

Worldwide leader in the field of waterproofing and insulation systems, SOPREMA is recognised for high quality products and technical expertise.

For over 100 years, SOPREMA has been known for its utilisation of advanced research and development capabilities that do not follow trends, but set the mark for the competition to follow.

The Alsan range of PMMA (Polymethyl methacrylate) liquid applied membranes includes a complete offering of resins, reinforcements and accessories, providing for a variety of seamless roofing and waterproofing solutions.

## MINIMAL DISRUPTION ON SITE

The Alsan product range delivers hard-wearing, rapid-curing and durable surfacing solutions, that minimise disruption to business operations, building occupants and other trades on site.

Modern architecture requires high performance materials and solutions, providing durable results in terms of functionality, profitability, and attractiveness. To meet these requirements, SOPREMA has developed a unique range of modern and reliable liquid applied waterproofing solutions, providing users with many benefits.

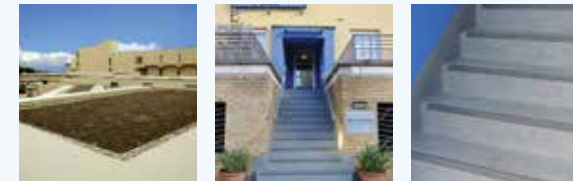
## CERTIFICATION

Alsan liquid waterproofing products are BBA certified. Alsan is manufactured according to the principles of sustainable construction, respecting the environment, human resources and the economy!



## ADVANTAGES

- + Resistant to chemicals
- + Low temperature application
- + Fully-bonded
- + Cold-applied
- + Aesthetic



## SOPRACOVER WARRANTY

20 year warranties are available for Alsan systems as standard, determined by the system specified. All SOPREMA products are installed by approved contractors to ensure a consistent standard of workmanship. There are no minimum surface area or project value requirements to qualify for the Sopracover warranty.



## TECHNICAL SERVICES

Technical expertise is a key strength of SOPREMA, our technical experts are available to assist you from design right through installation, providing the following services:

- » Surveys, core samples and condition reports for refurbishment projects
- » Design consultations and advice for new build projects
- » Standard details and CAD drawings
- » Educational seminars
- » Detailed project specifications
- » Interim and completion site inspections





# ALSAN APPLICATIONS



## ADVANCED TECHNOLOGY

Utilising PMMA (Polymethyl methacrylate) technology, ALSAN is an ultra-high performance, flexible, seamless, cold liquid-applied roofing and waterproofing membrane solution.

ALSAN 601 is a single-component polyurethane resin used for the creation of seamless, elastic and flame-free waterproofing which withstands building movements.

## HIGH PERFORMANCE

Alsan PMMA waterproofing systems always provide the right solution, even in low temperature or high stress conditions. Alsan PMMA systems are suitable for application conditions as low as -5°C.

The Alsan polyurethane waterproofing system is easy to apply and provides an excellent bond to the substrate. The Alsan 601 can be installed in temperatures as low as 0 degrees C and is weather resistant once cured.

Since Alsan systems are rapid curing, with no waiting period before covering, areas are ready for use exceptionally quickly, while providing a perfect finish, whether applied to refurbishment or new construction projects.

Alsan fully reinforced waterproofing systems provide exceptional performance and bonding on all types of substrates and structures.

## ADVANTAGES

Alsan systems are used in all types of trafficable or non trafficable construction to provide waterproofing and protection from rainwater and tough environmental conditions.

Alsan liquid waterproofing systems are cold applied in liquid form, making them perfect for projects where use of a flame is prohibited.

- + Rapid curing
- + Puncture resistant
- + Easy to install
- + Excellent adherence
- + Seamless & highly aesthetic



## BALCONIES



Fully and partially reinforced systems for balcony spaces



## PARKING



Fully and partially reinforced systems capable of withstanding heavy vehicular traffic



## UPSTANDS & DETAILS



Fully reinforced systems developed for flashings, walls, penetrations, curbs, drains, and difficult details



## WATERPROOFING



Fully reinforced systems constructed for waterproofing protection



## SURFACE PROTECTION



Fully reinforced systems designed to protect surfaces from exposure to harmful contaminants



## PEDESTRIAN TRAFFIC



Fully and partially reinforced systems constructed to withstand consistent pedestrian traffic



## FUNCTIONAL



Fully reinforced systems designed for garden roofs, pavers and water feature installations.



## GREEN ROOF



Fully reinforced systems for waterproofing under green roof installations

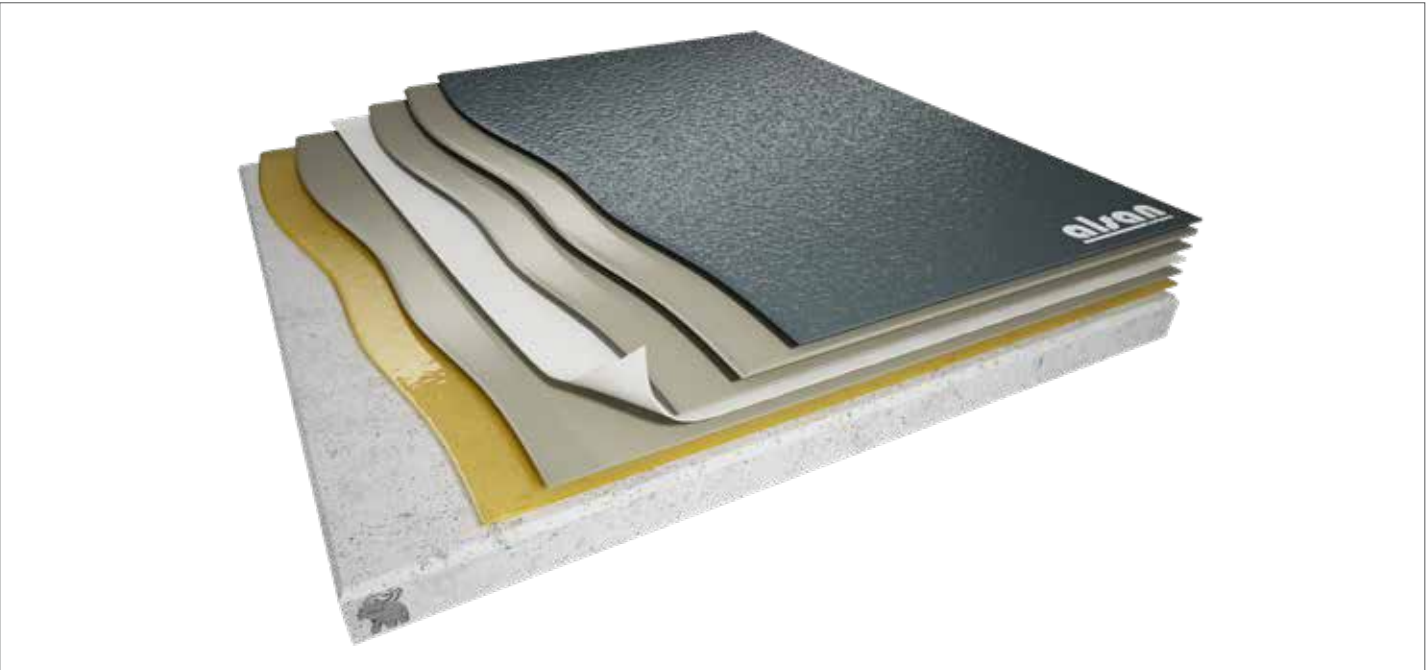


# EXAMPLE SYSTEMS

## ALSAN PMMA

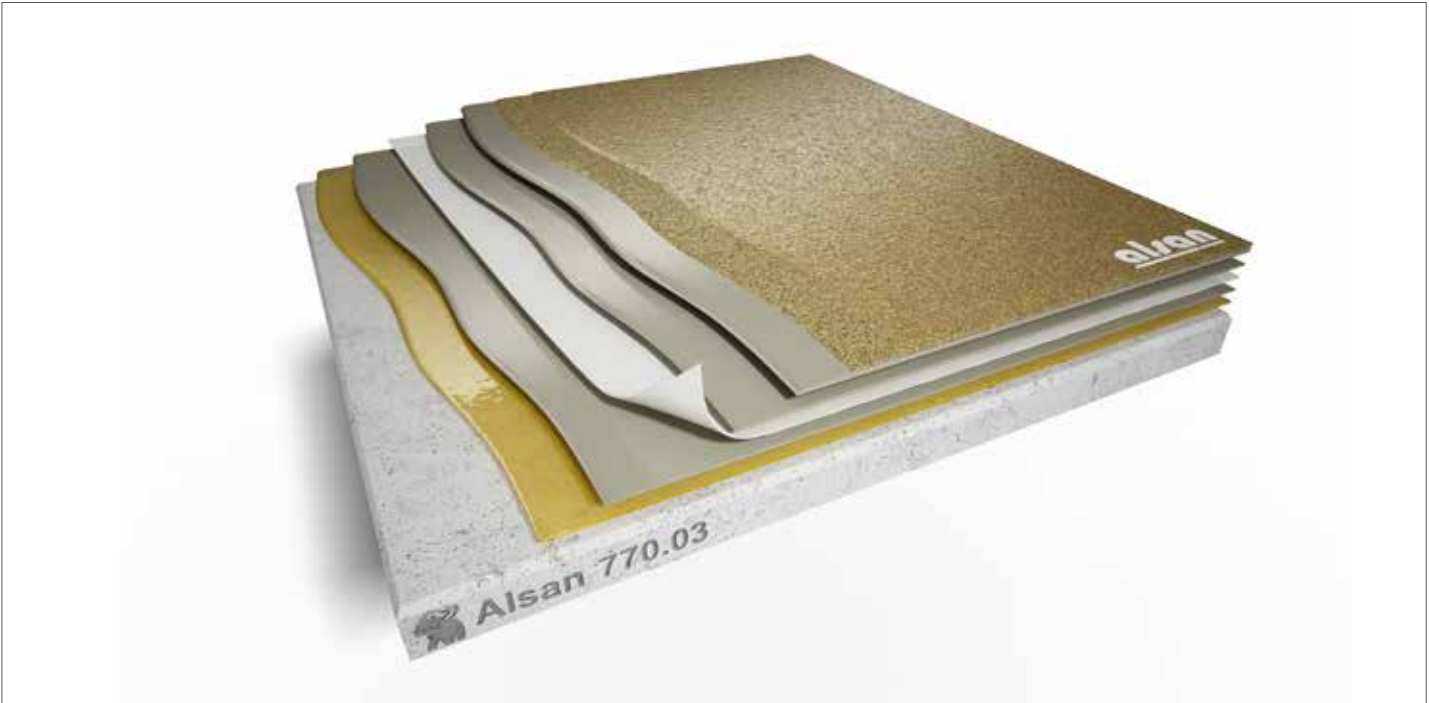
### BESPOKE SYSTEMS FOR YOUR PROJECT

We have a vast range of surfacing systems and finishes, the systems that are displayed on these pages are indicative of typical system build ups that are specified for surfacing projects. For a bespoke system recommendation that meets the individual requirements of your project, please contact us. Our contact details can be found on the back cover of this document.



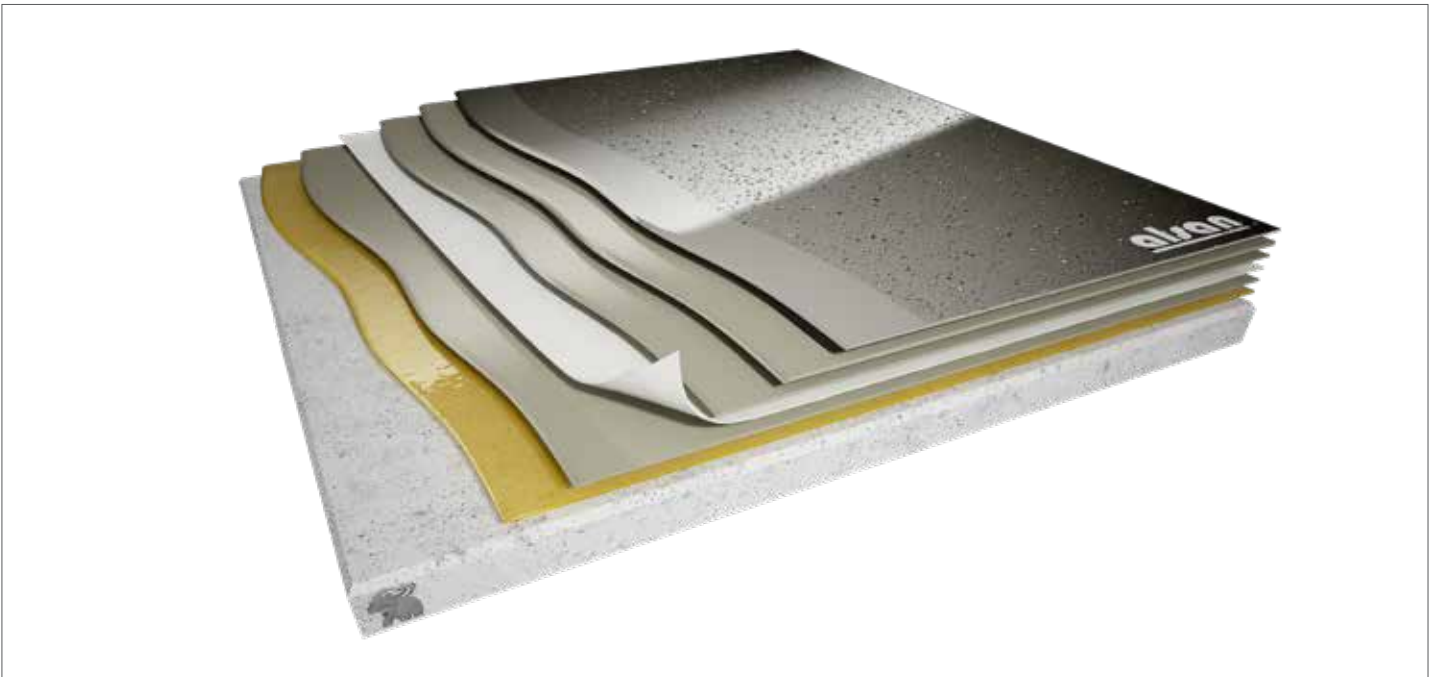
**ALSAN® 770.04** THICK REINFORCED STRUCTURED WATERPROOFING SYSTEM

APPLICATIONS	SUBSTRATE	STRESS LEVEL	WATERPROOFING	DECO STRUCTURE FINISH
Balconies, terraces, flat roofs, parking areas	Concrete	Extreme (with crack bridging).	Alsan® 770 with Alsan Fleece P and Alsan® 870 RS hard wearing layer	Highly slip resistant



**ALSAN® 770.03** NON SLIP AESTHETIC REINFORCED WATERPROOFING SYSTEM

APPLICATIONS	SUBSTRATE	STRESS LEVEL	WATERPROOFING	DECO MIX FINISH
Balconies, terraces, flat roofs, parking areas	Concrete	Heavy (with crack bridging)	Alsan® 770 with Alsan Fleece P and Alsan® 870 RS wearing coat	Non-slip with coloured sand or micro-chips



**ALSAN® 770.01** DECORATIVE WATERPROOFING SYSTEM

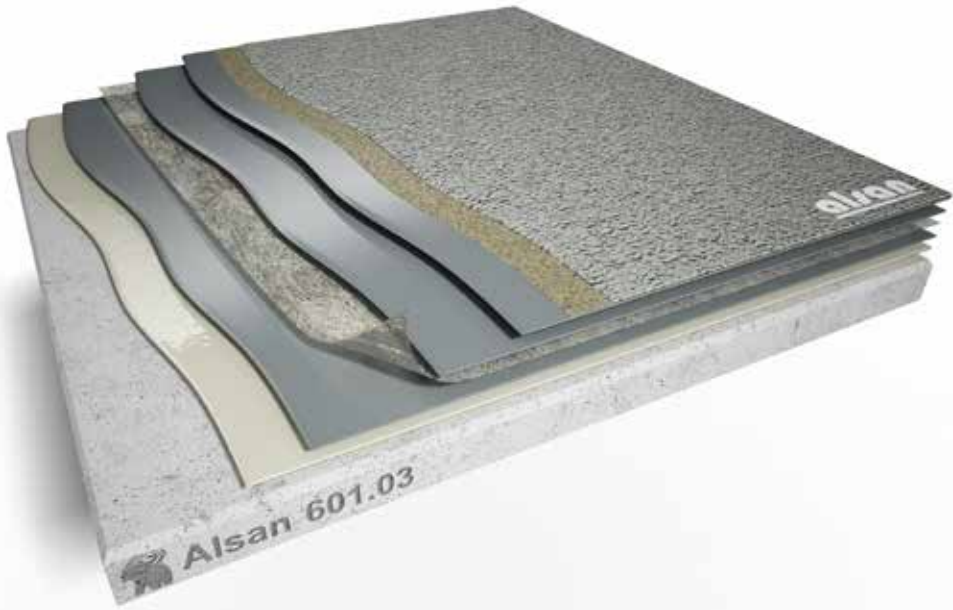
APPLICATIONS	SUBSTRATE	STRESS LEVEL	WATERPROOFING	DECO FINISH+
Balconies, terraces, flat roofs, parking areas	Concrete	Normal (with crack bridging)	Alsan® 770 with Alsan Fleece P and Alsan® 870 RS hard wearing layer	Smooth aspect + Alsan® Déco Chips sprinkled on the still wet finish layer

# EXAMPLE SYSTEMS

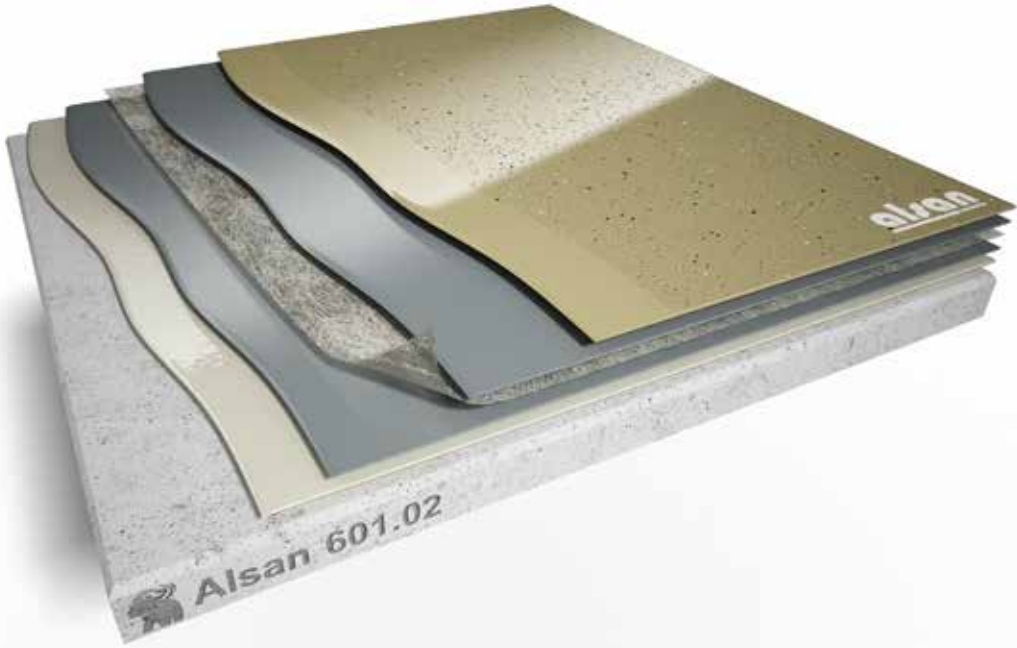
## ALSAN POLYURETHANE

### BESPOKE SYSTEMS FOR YOUR PROJECT

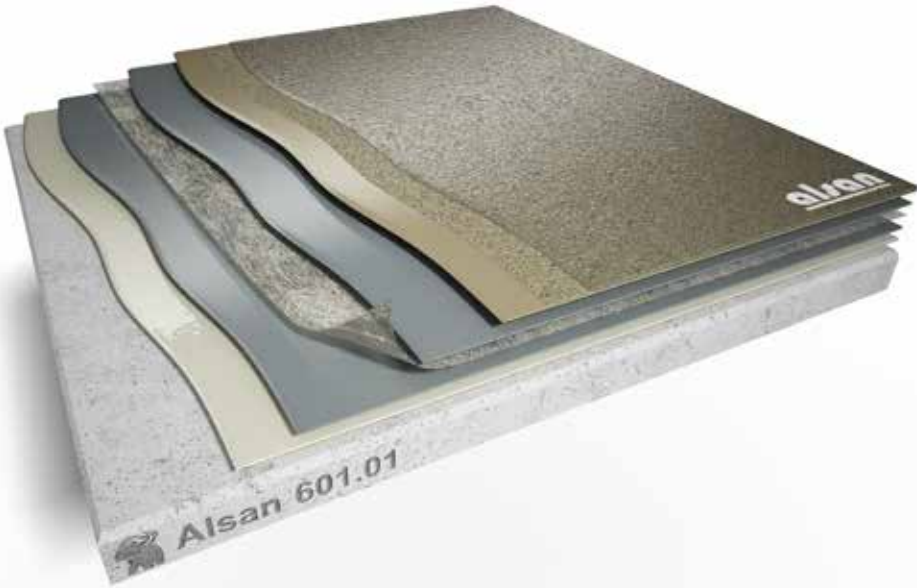
Alsan 601 has the highest Fire Rating in Europe ( Broof T4 ) and has been tested on Plywood , and not on a non-combustible board. Alsan 601 is the fasted curing Single Component PU in the UK.



ALSAN 601 DECORATIVE PROTECT WATERPROOFING SYSTEM				
APPLICATIONS	SUBSTRATE	STRESS LEVEL	WATERPROOFING	DECO STRUCTURE FINISH
Balconies, terraces, flat roofs, parking areas	Concrete	Extreme (with crack bridging).	Alsan 601 with Alsan GF Reinforcement Fleece and Alsan 903 CP wearing layer	Highly slip resistant



ALSAN 601 DECORATIVE FINISH + WATERPROOFING SYSTEM				
APPLICATIONS	SUBSTRATE	STRESS LEVEL	WATERPROOFING	DECO MIX FINISH
Balconies, terraces, flat roofs, parking areas	Concrete	Heavy (with crack bridging)	Alsan 601 with GF reinforced Fleece and Alsan 903 CP wearing layer	Non-slip with coloured sand or micro-chips



ALSAN 601 DECORATIVE MIX WATERPROOFING SYSTEM				
APPLICATIONS	SUBSTRATE	STRESS LEVEL	WATERPROOFING	DECO FINISH+
Balconies, terraces, flat roofs, parking areas	Concrete	Normal (with crack bridging)	Alsan 601 with Alsan GF Reinforcement Fleece and Alsan 903 CP wearing layer	Smooth aspect + quartz sand 0.4 - 0.8mm sprinkled on the still wet finish layer



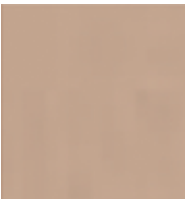
# ALSAN PMMA

## UNLIMITED COLOUR

## UNRESTRICTED DESIGN

The Alsan PMMA range offers completely unrestricted design through a wide range of system colours and finishes. The finishing components in our range can be ordered in any RAL colour to suit specific aesthetic design requirements.

### DECORATIVE FINISHES



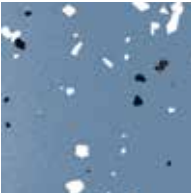
DECO FINISH  
Aspect: Smooth  
Finish: Alsan 970 F



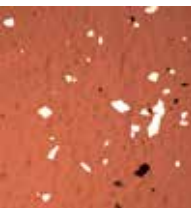
DECO PROTECT  
Aspect: Rough, non-slip  
Preparation: Quartz Sand  
Finish: Alsan 970 F



DECO STRUCTURE  
Aspect: Mineral Parging  
Finish: Alsan 972 F



DECO FINISH +  
Aspect: Smooth +  
Alsan DecoChips  
Finish: Alsan 970 F



DECO PROTECT+  
Aspect: Rough + Alsan Deco Chips  
Preparation: Quartz Sand  
Finish: Alsan 970F, Alsan Deco Chips



DECO MIX  
Aspect: Orange Peel Parging  
Finish: Alsan 970 F, micro chips  
Protection: Alsan 970 FT



### RAL COLOURS

The finishing components in the PMMA range can be ordered in any RAL colour to suit specific aesthetic design requirements.

# ALSAN PU

## UNLIMITED COLOUR

## UNRESTRICTED DESIGN

The Alsan 601 Polyurethane products is available in a limited range of RAL colours.

Alsan 903 CP - Clear

Alsan 903 CP Pigmented  
RAL colours  
1001 – Beige  
1013 – Oyster White,  
7001 – Silver grey  
7032 – Pebble grey



Alsan systems are extremely hard wearing, and can also provide chemical and slip resistance.

The versatility and performance benefits that the Alsan systems offer, have resulted in these products becoming increasingly popular for many varied and challenging applications.







**SOPREMA** at your service:

Do you have a question about a specific project, the products or application possibilities? Then contact our technical team.

All information can be found on:  
**[www.soprema.co.uk](http://www.soprema.co.uk)**

**SOPREMA UK**

SOPREMA House  
Freebournes Road  
Witham, Essex, CM8 3UN

Tel : 0330 058 0668  
[info@soprema.co.uk](mailto:info@soprema.co.uk)  
[www.soprema.co.uk](http://www.soprema.co.uk)

