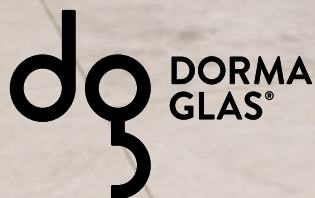


Moving Details.

# BALCONY AND TERRACE SLIDING WALLS

with innovative clamping technology  
without glass processing



**style**  
moveable partition specialists



## Contents

3 Balcony and terrace  
sliding walls

4 Balcony sliding walls

6 Terrace sliding walls

8 System design

9 System details

10 Technical information





**Glazed balconies** create a new living space between the inside and outside.

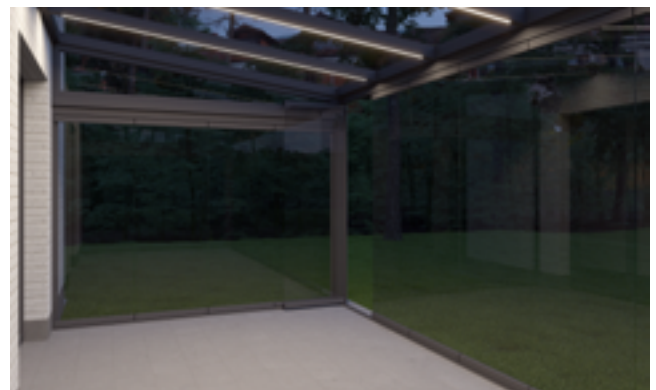
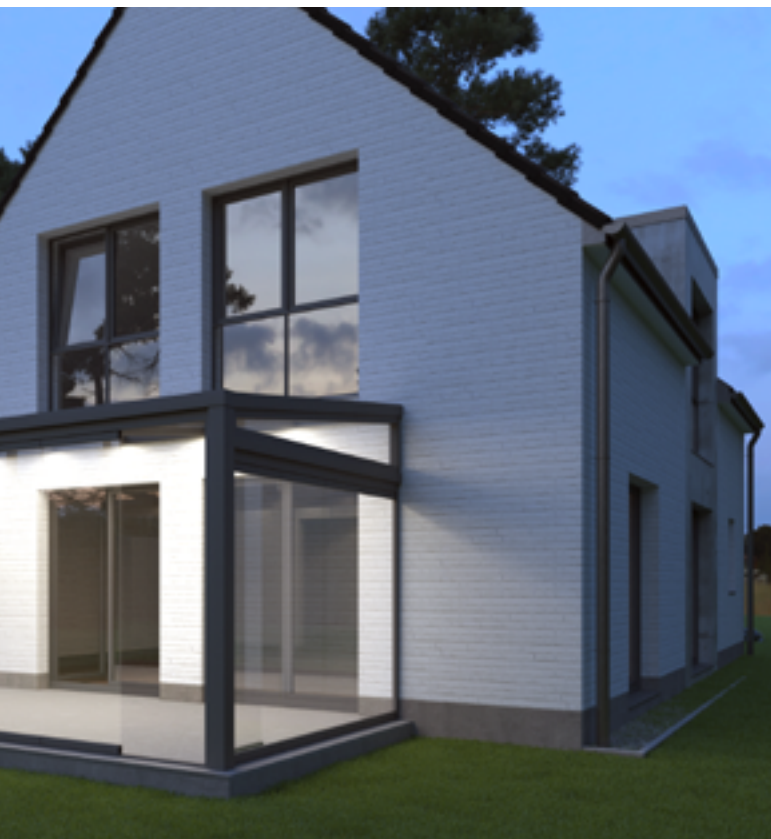


## Balcony and terrace sliding walls

### Expanding living spaces

With our DORMA-Glas turn- and slide-system for balcony and terrace glazing, we offer an approach for upgrading the outdoor area of any property. Be that as part of a new-build or renovation, for residential quarters or private homes – light-flooded rooms with open views of the outside create quality spaces for living and are guaranteed to become a new favourite spot in the home. Be inspired and discover the numerous advantages of our turn- and slide-systems for balcony and terrace glazing. Enjoy the outdoors no matter what the weather – with all the benefits of the indoors.

**Glazed terrace** for excellent quality of life.



#### At a glance

- In aluminium or powder-coated finish
- Available in the weather-proof colour of your choice
- Clamping technology as a sustainable system
- No glass processing required
- Space-saving parking of sliding walls
- Large opening widths
- Flexible system configurations

## Balcony sliding walls

### A new favourite spot in the home

To make the best possible use of the space available, modern living quarters are also increasingly being developed in traffic-heavy urban areas. In such cases, balcony sliding walls by DORMA-Glas offer attractive added value for buyers and renters: background noise is reduced, and the wind and rain are kept at bay. But you can still enjoy the feeling of being outdoors.



#### Be protected outdoors

Be that as a place to relax in daily life or in the job as a home office – the system can be installed on balcony railings, allowing you to enjoy your view beyond the summer months. And that without exposure to the changeable weather.



#### Enjoy the view

– protected from the wind and rain.



#### Indoor climate for comfort and relaxation

While still keeping out the wind and rain, tiny openings between the glass elements provide continuous ventilation of the living space and optimal air circulation. As a glazed transition area, the balcony creates an additional buffer leading to reduced heat loss.



▲  
**Outdoor comfort**  
- and that every-  
where.



### Added value with balcony glazing

- Wind and rain protection for use all year round
- Air circulation thanks to small gaps (3 mm) between the glass elements
- Protection for children and pets
- Less heat loss
- Light-flooded quarters with high quality of living
- Optimal use of living space, even next to busy roads (sound insulation)
- Smooth, quiet handling
- Low space requirement since the sliding walls are parked in narrow bays
- Weather-proof powder coating with unlimited colour options
- Great investment for increasing the value of the property

### Resting despite the bustle outside

As a result of the noise reduction, the glazing turns your balcony into an inviting space for productive work or deep relaxation. The perfect place to focus, or to escape everyday life and recharge your batteries.

### Easy and intuitive to use

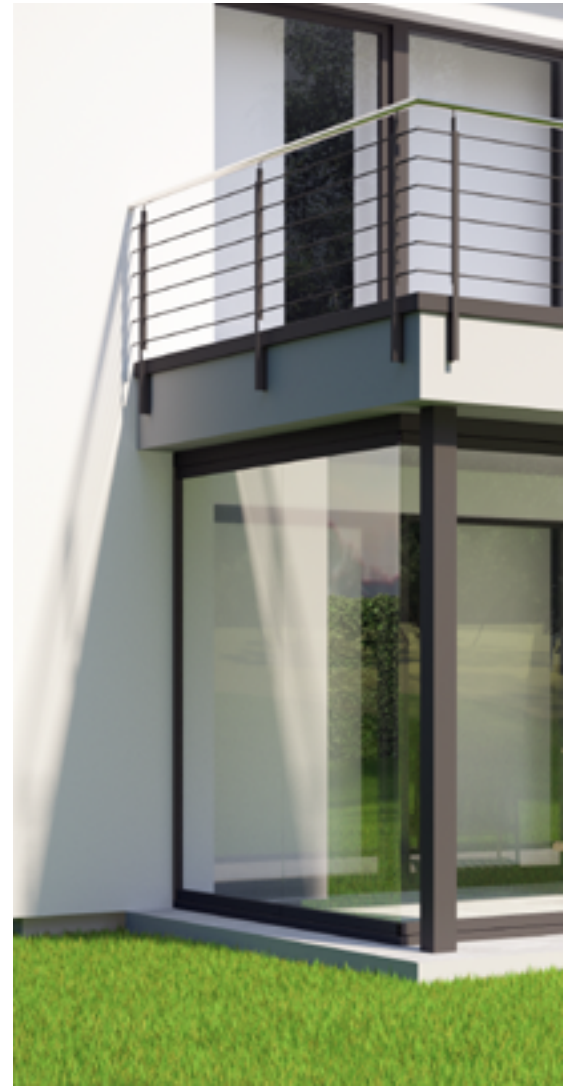
On sunny days, the sliding system can be opened fully and parked in narrow bays on the sides. Thanks to the sophisticated roller system and optimal sliding properties, the system can be closed again quickly if it begins to rain.

# Terrace sliding walls

## Upgrading outdoor areas

The perfect addition to any living space are the sliding terrace walls from DORMA-Glas, which provide more comfort and functionality.

A cosy and protected atmosphere is created, with a pleasant, relaxed feeling.



## Open-air oasis for a little downtime even beyond the summer months

### Light-flooded open-air room

With DORMA-Glas' turn- and slide-systems, the property's external area can be enjoyed all year round, without exposure to the elements. When the sliding walls are opened fully on beautiful days, the living area can be expanded and moved out into the garden. And your views of nature are unaffected since the sliding walls barely take up any space when open.

### Perfect look and feel

Our turn- and slide-systems are manufactured from high-quality materials and are available in various system configurations, which can be flexibly adapted to perfectly fit the architecture of any property. Thanks to optimal sliding properties, even large glass elements can be easily and quietly moved. The stainless-steel turning knob allows you to open the pivoting end panel from the inside and the outside.





### Added value with terrace glazing

- Use the terrace all year round with wind and rain protection
- Air circulation thanks to small gaps (3 mm) between the glass elements
- Protection for children, pets and terrace furniture
- Extend the living space
- Flowing transition between the garden and living area
- Smooth, quiet handling
- Low space requirement since the sliding walls are parked in narrow bays
- Stainless-steel knob for access from both sides
- Weather-proof powder coating with unlimited colour options
- Great investment for increasing the value of the property

▲  
**Relax off all year round**  
 and enjoy the feeling of the open air.

### Barrier-free access for more comfort

Recessed floor tracks not only make the terrace accessible for people with limited mobility, but also for wheeled walkers and prams. The floor track disappears almost completely into the floor, creating a level transition between the garden and terrace – complete with an aesthetically pleasing look.

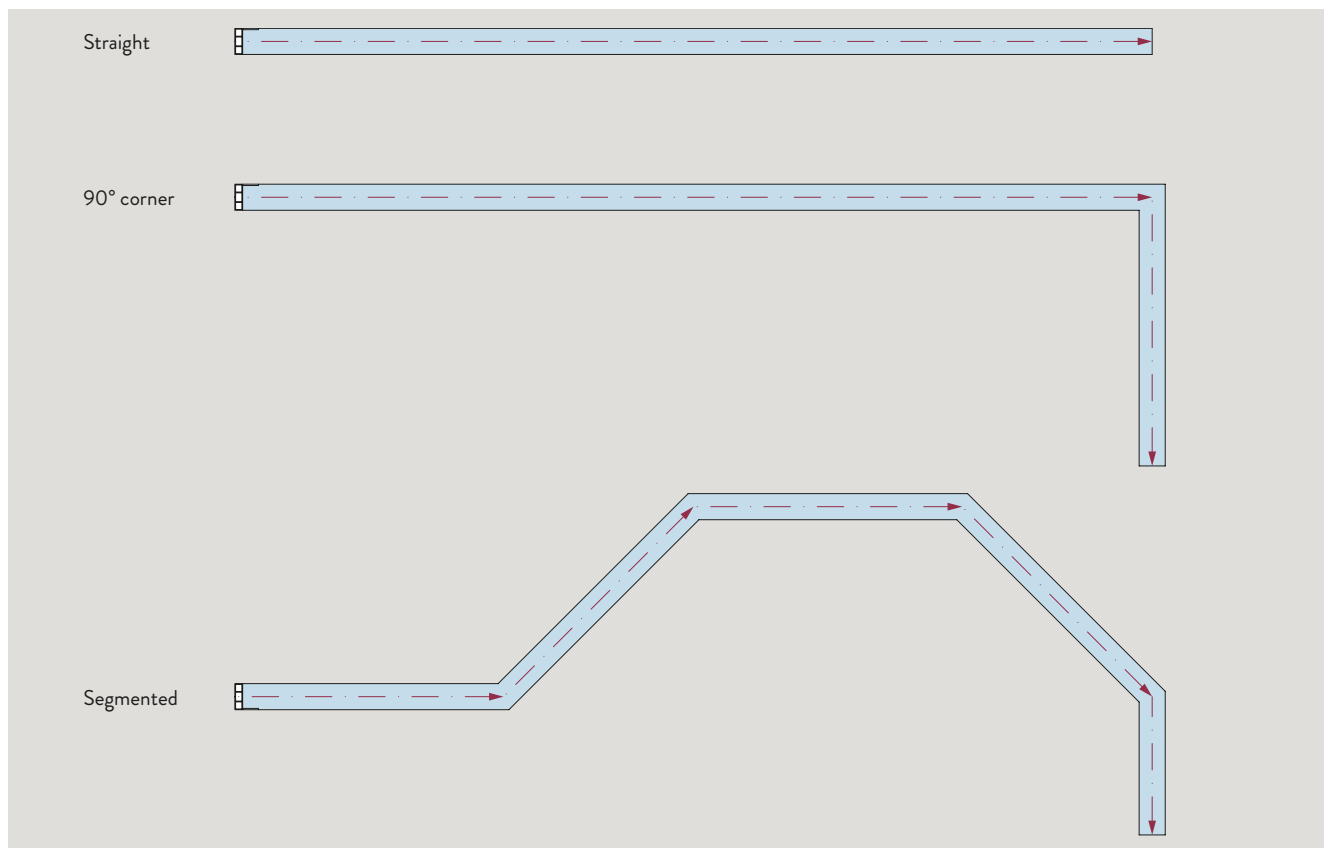
### A worthwhile investment

These glazing solutions are a worthwhile investment that not only make a building more attractive, but also help to increase its value with beautiful design and high-quality materials. Our turn- and slide-systems are very stable, and are therefore also extremely durable and easy to maintain. The user can enjoy them for a long time without having to worry about extensive maintenance or cleaning work.

# Turn- and slide-system design

## Flexible, versatile and adaptable to each customer

With our versatile range of system configurations and variants, we can address the individual needs and requirements of our customers and adapt our turn- and slide-systems to the architecture of every property. Systems with heights of up to 2800 mm can be provided with straight, angled or radial segments. Be it on balcony railings or for the ceiling height of a terrace or a gazebo, be it operable on one or both sides – we always have the perfect solution.



▲  
**Versatility for more flexibility**  
- the perfect solution for every requirement.

### Ease of use

With our robust, maintenance-free fittings, the user gets a low-wear system they can enjoy for a long time. The DORMA-Glas sliding rails guarantee an undisturbed experience of nature: they include a roller system with optimal sliding properties, allowing you to open the sliding panels across the entire front silently and with a pleasant feel. These can be easily positioned in narrow bays at the sides, giving you unobstructed views of the outdoors. The turn- and slide-systems are designed in a way that makes it easy to clean the fittings and the inner and outer panels.



# System details that impress

## An intelligent and practical solution

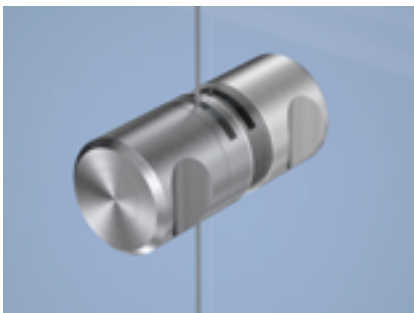


### Sliding rails with autonomous pivoting point identification

Every sliding panel finds its pivoting point automatically and that always vertically over the relevant lower pivot point. All that is required is the swift and easy installation of the components in the slide and guiding track. The sliding rail also facilitates smooth and quiet operation.

### Individually tailored to customer needs up to complete solutions

Thanks to the weather-proof powder coating, the DORMA-Glas turn- and slide-systems are ready for any weather. And there are no limits when it comes to the choice of colour: not only can the colour match the interior, it can also be harmoniously integrated into the facade, because the exterior and interior frame can have different coatings.



### Turning knob for access from both sides

Via a steel cable, the stainless-steel turning knob opens and closes the locking bolts in the upper and lower door rail of the first door panels. The turning knob comes in a one-sided or two-sided version. In addition to the standard stainless-steel version, the turning knob can also be powder coated in the customer's colour of choice.



### Floor track – barrier-free and functional

In the parking niche, the system does not need to be released from the floor profile and can therefore be embedded in the floor. This gives the user barrier-free access from inside the home to the outside area. Drainage vents and a condensation gutter lead water back outside.



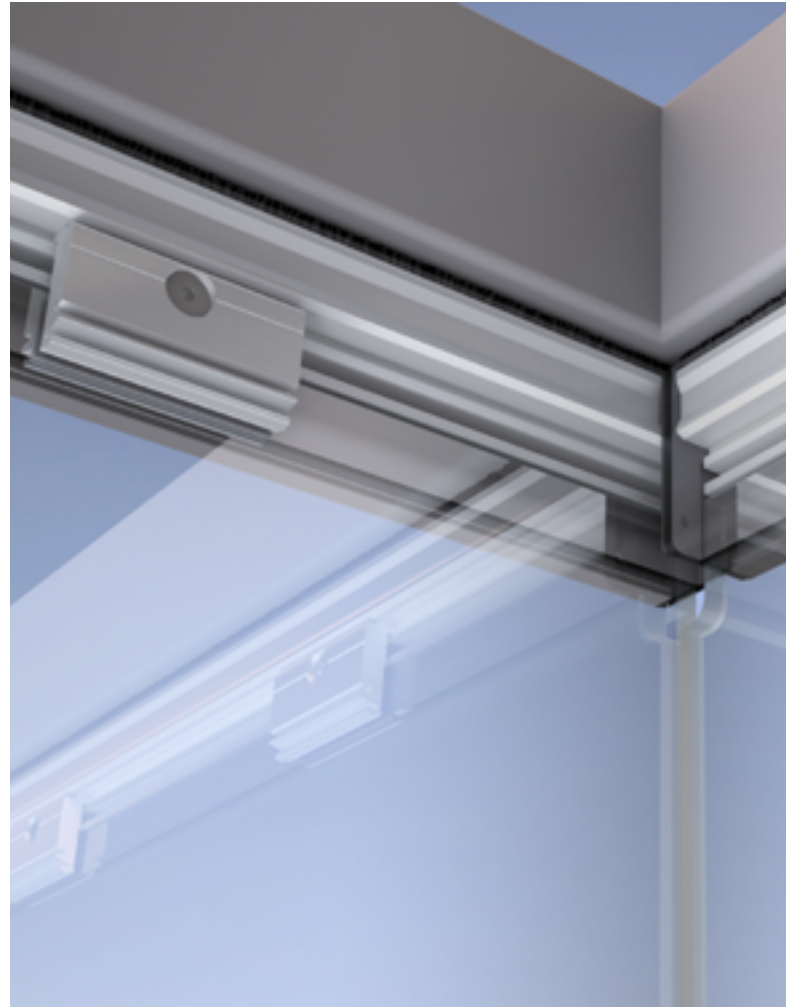
### Large openings with double exit

A third roller carriage variant makes it possible to increase the maximum number of sliding panels per parking niche to twelve. This allows users to open the entire front and park all the panels together on a single side.

## Technical details

### Clamping for more flexibility and sustainability

To ensure maximum stability and security, the glass elements are securely clamped in the profile using innovative clamping technology. This clamping technology also boasts other advantages over conventional adhesive technologies: no need for glass processing, shorter manufacturing times, flexibility during installation, as well as benefits for the environment and human health. Adhesive cartridges are a thing of the past, as are the harmful vapours from adhesives when positioning the glass.



#### The advantages of the new clamping technology

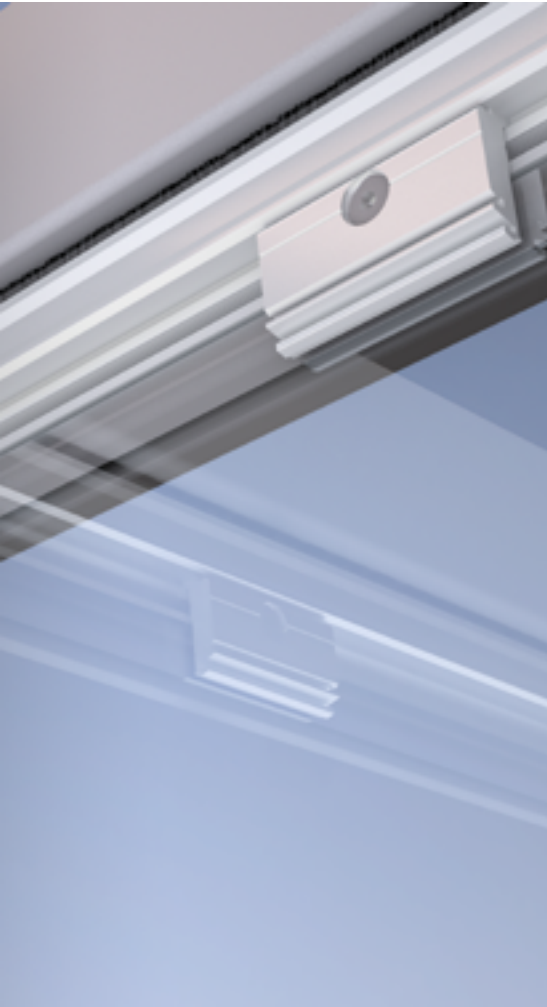
No drying time for adhesives, making the manufacturing times of door panels significantly shorter.

Greater flexibility during production and installation.

A full-length screw channel in the clamping rail allows the necessary clamping points to be positioned individually above the door width. The number of clamping points depends on the weight of the doors.

The clamping rail means that no glass processing is required, so the height can be adjusted directly on the door panel during installation. Measuring errors can therefore be quickly corrected.

Because the upper pivot bearing of the pivoting end door can be variably positioned, it can be flexibly adjusted during installation.



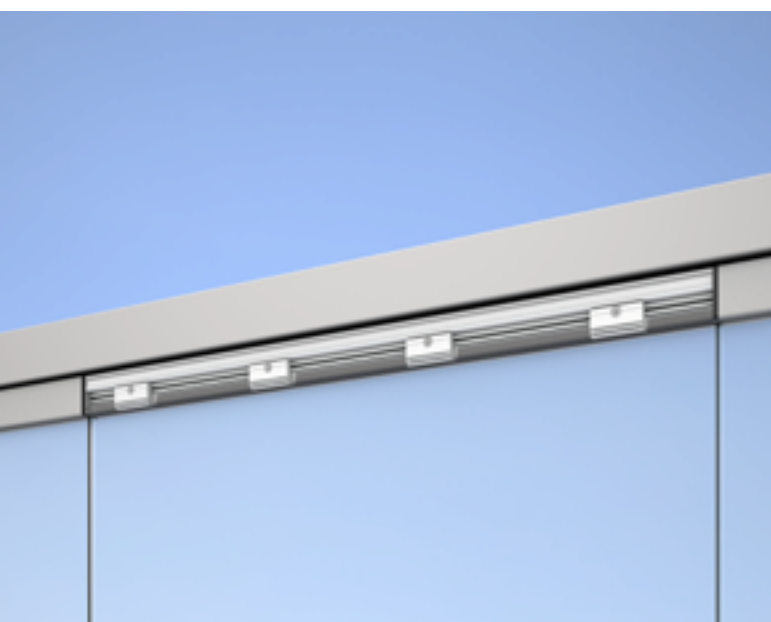
## A sustainable system offering added value

### Clamping to protect the environment and health:

- No material waste because the glass, if it breaks, can simply be exchanged, and the door fittings can still be used.
- No gases released when curing adhesives in the production process.
- No adhesive or cartridge residues in the production process.
- No harmful adhesives used to position the glass.



**Weather protection angle**  
to protect against wet and windy conditions while facilitating a moisture exchange with the surrounding air.



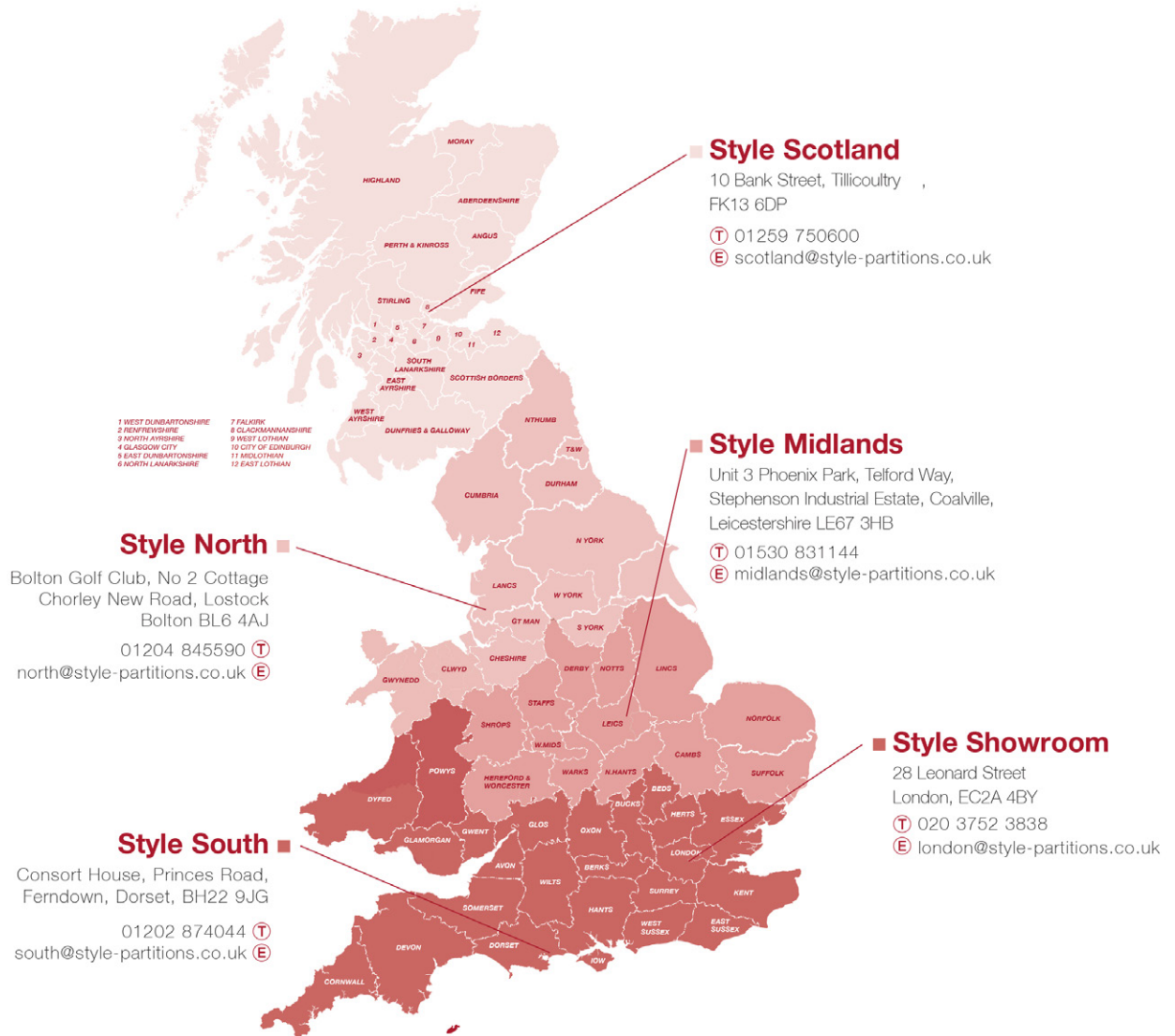
### Additional technical details

- No need for glass processing thanks to the clamping technology
- Fast assembly and easy to adjust even when installed
- Max. panel width: 900 mm
- Max. panel height: 2800 mm



# style

moveable partition specialists



[www.style-partitions.co.uk](http://www.style-partitions.co.uk)

**FIS**

FIS Contractors Gold Award  
Winners 2004, 2008, 2009, 2010, 2011, 2014,  
2015, 2016, 2017

ACCREDITED MEMBER

**FIS**

**DORMA-Glas GmbH**

Max-Planck-Straße 33-45

D - 32107 Bad Salzuflen

[info@dorma-glas.com](mailto:info@dorma-glas.com)

[www.dorma-glas.com](http://www.dorma-glas.com)

**in** DORMA-Glas GmbH

**o** DORMA-Glas GmbH



Subject to change without notice