

# HeartFelt® Baffles

Create Atmosphere Control Sound

MODULAR LINEAR CEILING SYSTEM



reddot winner 2020

**HunterDouglas**   
Architectural



# HeartFelt® Baffles

Successfully launched as a modular linear ceiling system, then as a wall and now as a baffle

## Inspirational Design

Baffles Ceilings have long been recognised as a ceiling system that can transform the spatial design, atmosphere and acoustic performance of a space. Following the introduction of our successful product HeartFelt®, Hunter Douglas Architectural developed a new baffle concept with the range of HeartFelt® Baffles.

This exciting combination of proven ceiling systems provides designers and architects with a bold flexible ceiling in a material that is sustainable, has a tough structure, soft appearance and great acoustic properties.

## Create Atmosphere - Control Sound

HeartFelt® Baffles will create atmosphere in almost any interior space and at the same time significantly reduce the acoustic energy that reverberates in a ceiling void. They are suited for a range of environments including offices, meeting rooms, auditoriums, concert halls or any space where airborne sound needs to be controlled.

The introduction of HeartFelt® as a modular baffle ceiling provides the designer with a choice of applications from remedial installation on damaged concrete ceilings to a new design led feature within the roof ceiling space of a room. HeartFelt® baffles are available in five different grey tones and are suspended via a new combi carrier rail system or wire hanger system. With a variety of widths (from 40 to 80 mm) and heights (from 100 to 500 mm) every ceiling can get a unique appearance.





Above and cover: Visualisation  
Product : HeartFelt® Baffles

Left : Architect office, Paris, France  
Product : HeartFelt® Baffles  
Architect : TOA

## HeartFelt® Baffles - The facts

- Unique acoustic properties
- Modular Felt Baffle Ceiling
- Cradle to Cradle Certified™ Bronze
- 100% recyclable, sustainable source
- Available in five shades of grey
- Soft appearance
- Dirt & Dust resistant
- EN 13501-1 class B-s1,d0
- Provide easy access to the plenum

CONTENTS	Page
HeartFelt® Baffles	2
Product Properties	4
Colours	5
Installation / Sustainability	6
Hunter Douglas Architectural	7

**HunterDouglas**   
Architectural



Designed to work for you



## Stunning Acoustics

There is a natural synergy between Baffle ceiling systems and HeartFelt® material that make the development of HeartFelt® Baffles so appealing to designers. Baffle ceilings are ideal for mitigating noise pollution and reverberating sound in most building sectors. Excellent acoustic absorption values, lightweight system and ease of installation make HeartFelt® Baffles a truly winning combination.

## Create amazing spaces

HeartFelt® Baffles measure 40 to 80 mm in width and between 100 - 500 mm in height and can be specified in lengths up to 2000 mm. These new baffle dimensions and modular options gives the architect tremendous flexibility to allow sound absorption to be controlled in virtually any interior space.

The new Combi Rail carrier system allows for varying module and colour variations enabling the designer to create a truly creative ceiling space for its occupants to look up too.



## Sustainability at its core

HeartFelt® Baffles are produced from non-woven, thermoformed PES fibres and have a Cradle to Cradle bronze certificate. No painting or coating of the material is involved, making the baffles 100% recyclable and reusable. The new combi carrier rail system is produced from steel and is together with the steel fixing clips 100% recyclable.

Above : Architect office TOA HR, Paris, France  
Product : HeartFelt® Baffles  
Architect : TOA

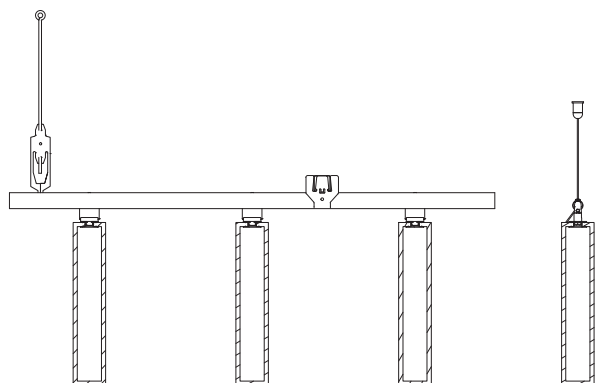
Left : Visualisation  
Product : HeartFelt® Baffles



# HeartFelt® Baffles

Hunter Douglas Architectural's new HeartFelt® Baffle ceiling system really does offer the designer a multitude of options.

A free design service is available to help designers combine different widths, heights and colours at fixed modulation.

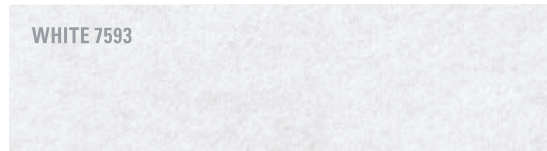


Project : Dentons, Amsterdam, The Netherlands  
Product : HeartFelt® Baffles  
Architect : Studio Prototype

## Colours

HeartFelt® Baffles ceiling systems are available in five shades of grey, ranging from white to black. The proportion of the white and black coloured PES fibres determines the overall colour of the panels.

WHITE 7593



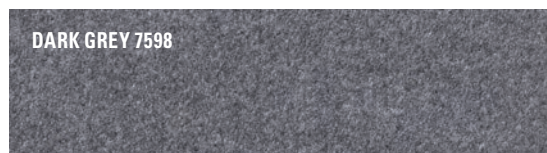
LIGHT GREY 7596



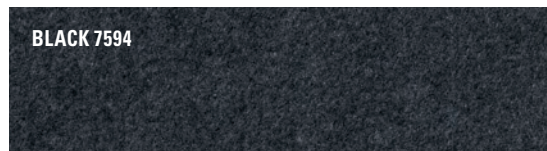
MIDDLE GREY 7597



DARK GREY 7598



BLACK 7594



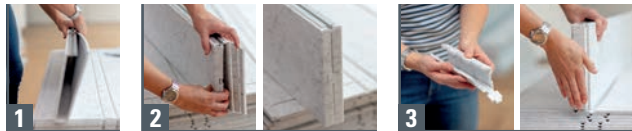
# Installation & Layout

HeartFelt® Baffles are attached to our new combi carrier rail system. Each felt panel is attached with a steel clip that clicks into the carrier rail. Panels are then locked into place using a sliding clip on each connection with the carrier rail. Depending on the installer's choice, the individual baffle's can be assembled on site or pre-assembled in our factory.

## Joining and finishing

The individual baffles can be joined using a splice. There are 3 options for the baffle ends:

- 1 No end cap
- 2 Single or double folded end cap
- 3 Separate single or double end cap



All three option can be varied on either end of the baffle.

## Integrated technology

The HeartFelt® baffles modular nature makes it easy to integrate building systems such as lighting, ventilation and fire safety systems.

## Suspension

The new combi carrier rail system is made of coated steel and consists of steel clips and sliding clips that connect securely to the carrier rail.

## Layout



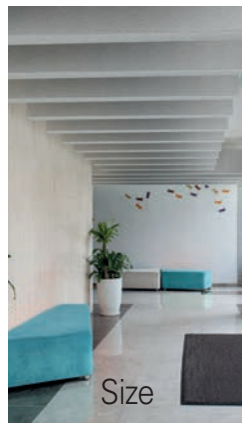
Colours



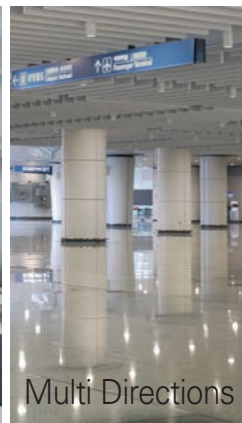
Positions



Heights



Size



Multi Directions



Wayfinding



### SUSTAINABLE PROPERTIES

## C2C certification



- Cradle to Cradle Certified™ Bronze
- The product meets the 'Low' requirements for use in low-polluting buildings.

*Cradle to Cradle Certified™* is a certification mark licensed by the Cradle to Cradle Products Innovation Institute.

## Building certification

- VOC emissions class A+
- Suitable for BREEAM and Leed

## VOC emissions



- BREEAM-Nor: approved
- M1: approved
- French regulations for CMR substances: approved

## Easy to maintain

HeartFelt®'s Baffle felt ceiling panels are easy to clean with a duster or vacuum cleaner.



In the last 60 years, we have been fortunate enough to help turn countless innovative ideas into products for innovative buildings. With major operation centres in Europe, North America, Latin America, Asia and Australia we contribute to thousands of high-profile projects including shopping centres, airports, government offices, hospitals, universities and offices.



▲ CEILINGS



▲ WALLS



▲ SUN LOUVRES



▲ FAÇADES

## Architectural services

We support our business partners with a wide range of technical consulting and support services for architects, developers, and installers. We assist architects and developers with recommendations regarding materials, shapes and dimensions, colours and finishes.

We also help creating design proposals, visualisations, and installation drawings. Our services to installers range from providing detailed installation drawings and instructions to training installers and advising on the building site.



Hunter Douglas adopts the cradle to cradle (C2C) product philosophy to the design of products that fit the circular paradigm. They are designed for longevity, using materially healthy technical nutrients that can be reused at end of life as a high-quality source for something new.

Cradle to Cradle Certified™ is a certification mark licensed by the Cradle to Cradle Products Innovation Institute.



*Hunter Douglas products and solutions are designed to improve indoor environmental quality and conserve energy, supporting built environments that are comfortable, healthy, productive, and sustainable.*



All steel products are 100% recyclable at the end of their lifecycle.



Printed on  
EU Ecolabel  
certified  
paper



All aluminium products are 100% recyclable at the end of their lifecycle.

## More information

Contact our **Project Support** for further help and advice on the design possibilities our applications can create.

Call us:  
**+44 (0)1604 648 229**

Send us an e-mail:  
**info@hunterdouglas.co.uk**

Visit our website:  
**www.hunterdouglas.co.uk**

## ASIA | AUSTRALIA | LATIN AMERICA | NORTH AMERICA

Austria  
Belgium  
Bulgaria  
Croatia / Slovenia  
Czech Republic  
Denmark  
France

Germany  
Greece  
Hungary  
Israel  
Italy  
The Netherlands  
Norway

Poland  
Portugal  
Romania  
Russia  
Serbia  
Slovakia  
Spain

Sweden  
Switzerland  
Turkey  
United Kingdom  
South Africa  
Middle East

### CEILINGS



### WALLS



### SUN LOUVRES



### FAÇADES



### HUNTER DOUGLAS ARCHITECTURAL UNITED KINGDOM

Suite 2, Newton House, Northampton Science Park  
Kings Park Road, Moulton Park Industrial Estate  
Northampton, NN3 6LG  
Tel: +44 (0)1604 648 229  
[info@hunterdouglas.co.uk](mailto:info@hunterdouglas.co.uk)  
[www.hunterdouglas.co.uk](http://www.hunterdouglas.co.uk)