



# Passenger Lifts Data sheets

17 Person  
Xtralift Core Range

**Stannah**

# 17 Person Passenger Lift Data Sheets

This technical data provides general guidance on the range of options and sizes available. We also provide CAD blocks and NBS lift specifications on all our products.

We can provide specific site solutions, including for existing lift shafts. For any queries regarding your project, to request budget quotes, or to discuss any detailed specifications please contact the Passenger Lift Technical Sales Team.

Email: **[sales@stannah.co.uk](mailto:sales@stannah.co.uk)**

Tel: **01264 339090**

## CONTENTS

---

*Xtralift Core Lift Range, up to 45m travel*

17 person (1275) commercial & stretcher lift dimensions 3

*General Information*

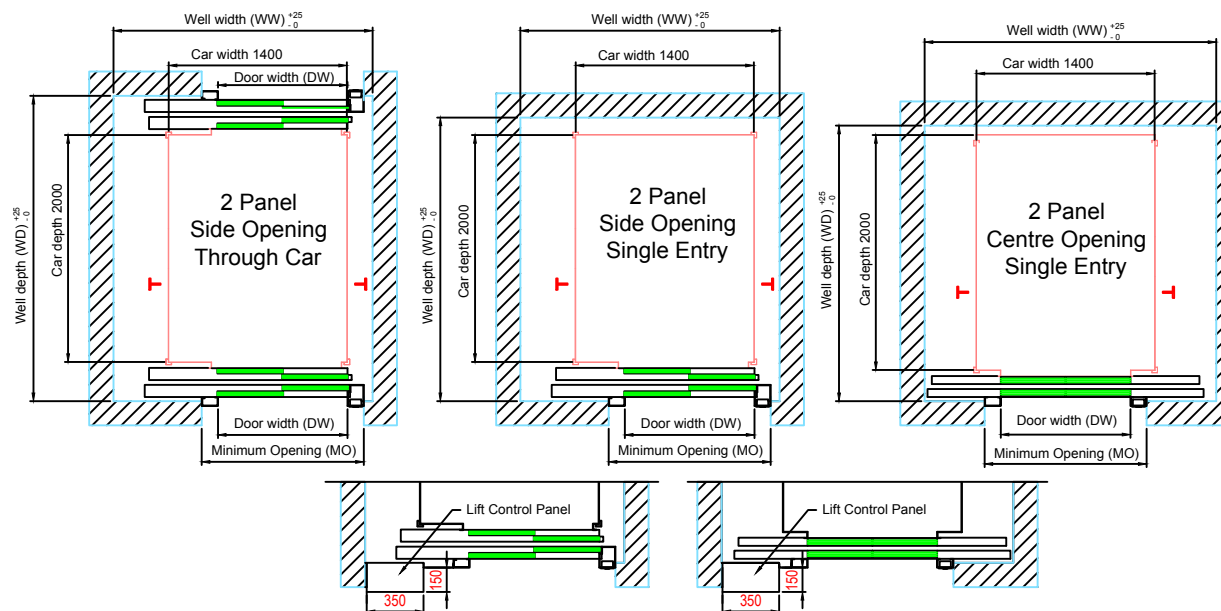
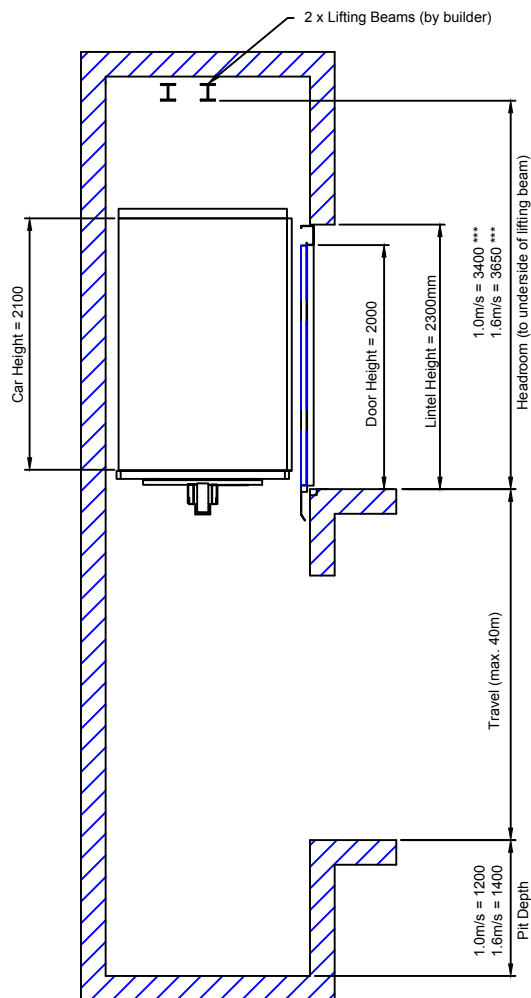
Lift loads 4

Threshold rebate details 5

Electrical loadings 6

# 17 Person (1275kg) Xtralift Core Range Traction MRL Lift

**Stannah**



Lift Control Panel located at top floor or one level below. It can be mounted next to the landing entrance or remotely mounted within 3m of the lift shaft

		Shaft Size				
		Single Entrance		Through Entrance		
DW	Door type	WW	WD	WW	WD	MO
1100	Side Opening*	2200	2350	2200	2600	1400
	Centre Opening*	2400	2300 (Pocket For Motor)	2400	2550 (Pocket For Motor)	

## Waiver:

We can work to a range of shaft dimension and configurations, including for existing lift shafts. If you're looking for a specific size to fit your project please contact the Passenger Lift Technical Sales Team who'll be able to advise further. This data sheet is for guidance only and must not be used for proper working drawings. Please contact Stannah Lifts for particular details before proceeding. Owing to our policy of continual improvement we reserve the right to alter specifications and dimensions without prior notice.

\*\*\* For Centre Opening Doors please add an additional 400mm to the underside of beam and headroom to account for EN81-20 requirements.

**Stannah Lifts Ltd.**  
Watt Close, East Portway,  
Andover, Hampshire SP10 3SD  
Tel: 01264 339090  
[sales@stannah.co.uk](mailto:sales@stannah.co.uk)

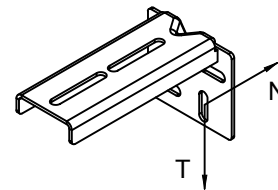
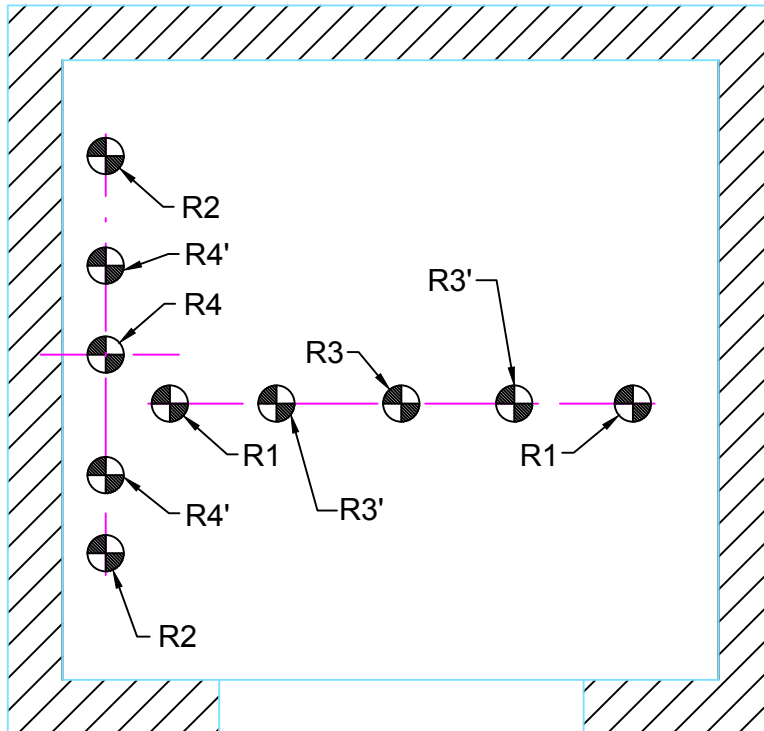
Information Sheet  
**T-17P**  
28/06/2022

# 6-17 Person Lift Loads

## Xtralift Core Range and Maxilift Entry Level Range

### Traction MRL Lift

**Stannah**



Guide Bracket Loads

		EQUIVALENT DEAD LOADS IMPOSED DUE TO LIFT OPERATION (kN)				
		6 Person	8 Person	10 Person *	13 Person	17 Person *
Pit Floor Loadings	R1	28	30	32	37.5	40
	R2	21	23	24	28	36
	R3	57	63	69	88	106
	R3'	—	32	35	44	53
	R4	48	51	53	68	81
	R4'	16	17	18	23	27
Side Wall Loadings	T	0.85	1.1	1.2	1.8	2.4
	N	1.8	2.0	2.2	2.8	3.5

#### B - Notes:

R1 = Dead load due to car plus load under safety gear operation  
R2 = Dead load below counterweight guides (without counterweight safety gear)  
R3 (R3') = Dead load due to car buffering  
R4 = Dead load due to counterweight buffering  
T = Shear load on side wall at each guide bracket  
N = Pull out load on side wall at each guide bracket

Note: Loads R3 and R4 do not act at the same time

Guide brackets are secured using M12 expansion fixings. The shaft must be capable of supporting this type of fixing and the imposed load.

The above figures are for guidance only and can change depending on specification and finishes.  
Specific details will be supplied as part of Stannah Lifts Builders Work Drawing.

For the Car:  
For 1.0m/s, 2 Buffers R3'  
For 1.6m/s, 1 Buffer R3

For the Counterweight:  
For 1.0m/s, 3 Buffers R4'  
For 1.6m/s, 1 Buffer R4

\* 10 and 17 person lifts only available in Xtralift Core Passenger Lift Range

#### Waiver:

We can work to a range of shaft dimension and configurations, including for existing lift shafts.  
If you're looking for a specific size to fit your project please contact the Passenger Lift Technical Sales Team who'll be able to advise further.  
This data sheet is for guidance only and must not be used for proper working drawings.  
Please contact Stannah Lifts for particular details before proceeding. Owing to our policy of continual improvement we reserve the right to alter specifications and dimensions without prior notice.

**Stannah Lifts Ltd.**  
Watt Close, East Portway,  
Andover, Hampshire SP10 3SD  
Tel: 01264 339090  
[sales@stannah.co.uk](mailto:sales@stannah.co.uk)

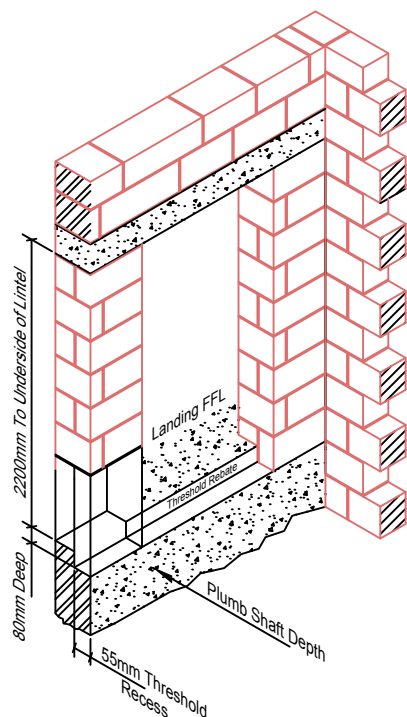
Information  
Loadings  
Sheet  
**T 6-17**  
28/06/2022

# Threshold Rebate Details

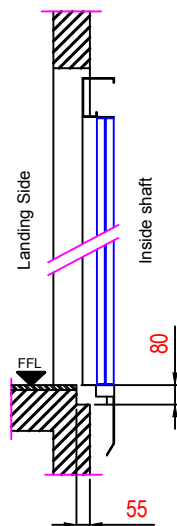
## Xtralift Core Range and Maxilift Entry Level Range

### Traction MRL Lift

#### Standard Arrangement (Doors mounted within lift shaft)

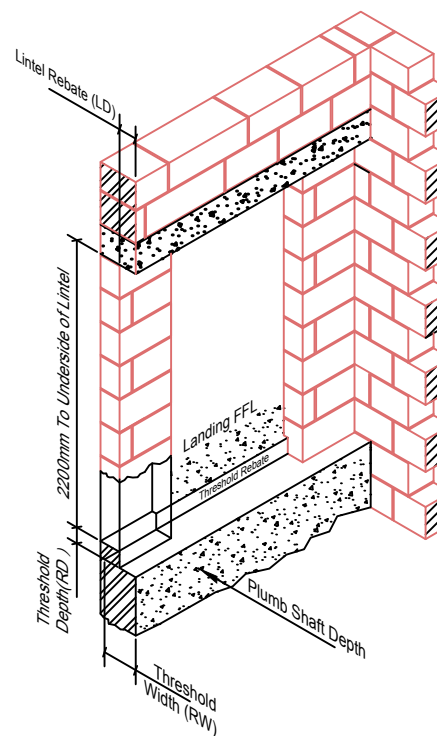


**Without Entrance Rebate**  
(View looking out of shaft)

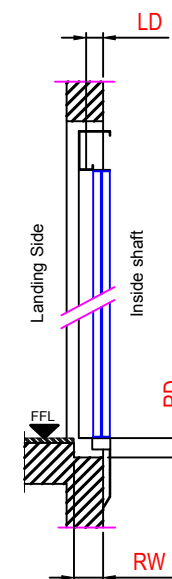


#### Reduced Shaft Depth Arrangement (Doors mounted on landing)

It is possible to reduce the required shaft depth by mounting the landing entrances on the landing. This can reduce the minimum shaft depth by the depth of the entrance rebate (LD), per entrance (please refer to shaft size data sheets). Please contact Stannah for further details.



**With Entrance Rebate**  
(View looking out of shaft)



Door type	Threshold Rebate		Entrance Rebate
	RW	RD	LD
Side Opening	120	80	70
Centre Opening	100	80	45

#### **Waiver:**

We can work to a range of shaft dimension and configurations, including for existing lift shafts. If you're looking for a specific size to fit your project please contact the Passenger Lift Technical Sales Team who'll be able to advise further.  
This data sheet is for guidance only and must not be used for proper working drawings.  
Please contact Stannah Lifts for particular details before proceeding. Owing to our policy of continual improvement we reserve the right to alter specifications and dimensions without prior notice.

**Stannah Lifts Ltd.**  
Watt Close, East Portway,  
Andover, Hampshire SP10 3SD  
Tel: **01264 339090**  
[sales@stannah.co.uk](mailto:sales@stannah.co.uk)

## Passenger lift Electrical Loadings & Requirements

A permanent motor rated 415V, 3 phase, neutral & earth 50Hz supply shall be provided terminating in a wall mounted socket, suitably rated for the supply and conforming to the IEC 60309 standard, together with a matching plug.

The supply must be rated for the start/run currents stated below, lockable in the 'OFF' position at the building intake room and clearly labelled 'Lift Main Supply'.

		Maxilift Entry-level Range			Xtralift Core Range			Xtralift Core Range		
		1.0 m/s			1.0 m/s			1.6 m/s		
Lift Size	Load (kg)	Motor Power (kW)	Start Current	Nominal Current	Motor Power (kW)	Start Current	Nominal Current	Motor Power (kW)	Start Current	Nominal Current
6 Person	450	4	20.9	11.2	4	20.9	11.2	8	40.0	22.8
8 Person	630	5	26.8	14.1	5	26.8	14.1	8	40.0	22.2
10 Person	800				6	29.7	17.3	12.8	61.6	34.9
13 Person	1000	7	34.0	17.6	7	34.0	17.6	12.8	61.6	34.9
17 Person	1275				10.2	53.5	29.7	17.7	59.4	36
21 Person	1600				19	75.6	32	27.2	96.3	45
26 Person	2000				21.8	77.4	36	35.4	122.4	68
33 Person	2500				21.8	77.4	43	40.8	144.0	80

Please note the electrical loading for an individual passenger lift is affected by travel & weight, the latter of which includes cabin finishes. Due to this we always recommend you refer to the exact specification given on builder's work drawings or speak to your technical sales consultant, particularly if the passenger lift car finishes have, or are likely to be, changed.

### Waiver

This data sheet is for guidance only and must not be used for proper working drawings. Please contact Stannah Lifts for particular details before proceeding. Owing to our policy of continual improvement we reserve the right to alter specifications and dimensions without prior notice

**Stannah Lifts Ltd.**  
Watt Close, East Portway,  
Andover, Hampshire SP10 3SD  
**Tel: 01264 339090**  
[sales@stannah.co.uk](mailto:sales@stannah.co.uk)

Information  
Sheet  
**X6-1**  
28/06/2022



## **Stannah Lifts**

Watt Close, East Portway, Andover, Hampshire SP10 3SD  
Telephone: 01264 339090

[www.stannahlifts.co.uk](http://www.stannahlifts.co.uk)

# Stannah