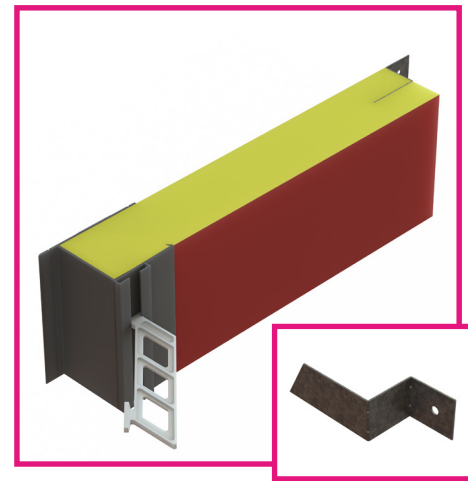


THERMO-LOC FR60 150+

60-minute fire-rated cavity closer

Fire rated barriers for eliminating damp and cold bridging around doors, windows and sills for cavities over 150mm up to 300mm



Use

- To close the cavity at external doors, window jambs and sills
- To provide thermal insulation and prevent 'cold bridging'
- To provide a DPC at external doors, window jambs or sills
- 60 minutes fire rating and minimum 15 minutes insulation
- Suitable for cavities over 150mm up to 300mm
- Suitable for timber and masonry walls

Features and Benefits

- Provides an effective DPC and thermal barrier between frame, inner and outer wall leaf
- Thermal conductivity of 0.034W/m²K
- Exceeds the minimum thermal resistance path of 0.45m²K/W stipulated in 'Part L' accredited construction details
- Rigid profile extrusion allows both first and second fix
- Suitable for flush jambs and sill positions (see Fig.1)
- Durable and resistant to decay
- Insulation option to suit your requirements both thermal and fire rated
- Global warming potential of zero
- Ozone depletion potential of zero

Quality

- Independently tested by Warrington Fire
- LABC Registered Detail
- Satisfies NHBC Standards
- Manufactured to BS EN ISO 9001 and BS EN ISO 14001
- Complies with Building Regulation Approved Documents C, B, L1 & L2
- Complies with 'Part L' accredited construction details
- Complies with the Scottish Building Standards 'Technical handbook'
- Satisfies BRE document 'Thermal insulation: avoiding risks'
- Meets all relevant British Standards

Material and Colour Choice

- Rigid profile extruded in grey UPVC
- Supplied in 2.4 metre lengths
- 50mm Rockfibre mineral wool (FR) insulation 0.034W/m²K
- Polyethylene bag encapsulates insulation for moisture protection

Installation Advice

- Can be used in both first and second fix applications
- Cut the cavity closer into required lengths allowing the jamb section to overlap the sill section and to butt the underside of the lintel
- Fit the 4 metal fixing flanges 100mm from each end and 100mm from the centre line. Ensure 2 fixing flanges per insulation slab section.
- In first fix application the cavity barrier should be nailed to the jamb/sill of the door or window frame and the whole assembly built in as work proceeds. Alternatively the barrier can be built in sections using fixing ties as work proceeds.
- For second fix applications, the cavity barrier is pushed into the open cavity after building work is complete. The compressible nature of the exposed insulation material is used to create a friction fit in the cavity, secure nail fixing is required.
- Joining 'off cut' sections should be minimised for the FR range.

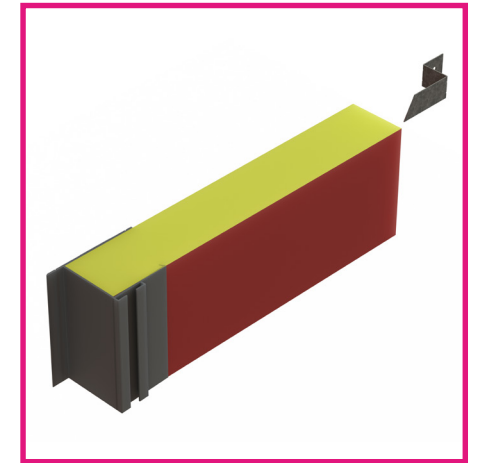


Timloc Building Products, Timloc House, Ozone Park, Howden, East Yorkshire, DN14 7SD
T: 01405 765 567 E: sales@timloc.co.uk W: www.timloc.co.uk Technical | E: technical@timloc.co.uk

THERMO-LOC FR60+

60-minute fire rated cavity closer

Fire rated barriers for eliminating damp and cold bridging around doors, windows and sills for cavities over 150mm up to 300mm



How to Order

- Establish the cavity width and select the correct cavity barrier width, or the next size up to ensure the cavity can be closed
- In jamb and sill applications, first estimate the total length of cavity barrier required, then order the correct number of individual 2.4 metre lengths so limiting joint pieces
- Fixing ties are available for secure fixing if required (particular attention around door openings). Allow for ties fitted at 450mm centres
- Supplied with 4 metal fixing flanges that must be slotted into place.

Technical Considerations

- BRE Document 'Thermal insulation: avoiding risks' and Robust Details stipulate: "When a window or door frame is set back behind the inner face of a dense outer masonry leaf, it should overlap an insulated closer by a minimum of 30mm for BRE exposure zones Sheltered to Severe; but fully rebated check reveals for zones Very Severe".
- With reference to insulation, the products in this range do not use, contain or produce Urea Formaldehyde, CFC's or indeed any of the so called soft CFC's, ie. HCFC's & HFA's. They conform to the Montreal Protocol and have an ozone depletion potential of zero and global warming potential of zero.

Product Codes

Thermo-loc 60-minute fire-rated cavity barriers

| Product code | Description | Cavity width | Length | Pack quantity | Lead time |
|--------------|------------------------|--------------|--------|---------------|-------------------|
| FR60/175 | Thermo-loc FR60+ | 175mm | 2.4m | 2 | 7-10 working days |
| FR60/200 | Thermo-loc FR60+ | 200mm | 2.4m | 2 | 7-10 working days |
| FR60/225 | Thermo-loc FR60+ | 225mm | 2.4m | 2 | 7-10 working days |
| FR60/250 | Thermo-loc FR60+ | 250mm | 2.4m | 2 | 7-10 working days |
| FR60/275 | Thermo-loc FR60+ | 275mm | 2.4m | 2 | 7-10 working days |
| FR60/300 | Thermo-loc FR60+ | 300mm | 2.4m | 2 | 7-10 working days |
| CCFIX | Fixing ties - 100 pack | - | - | 100 | Next working day |



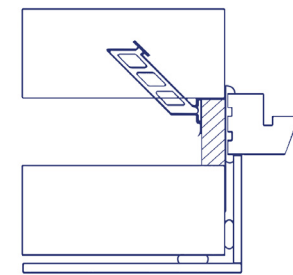
Timloc Building Products, Timloc House, Ozone Park, Howden, East Yorkshire, DN14 7SD
T: 01405 765 567 E: sales@timloc.co.uk W: www.timloc.co.uk Technical | E: technical@timloc.co.uk

Thermo-loc FR60 150+ Profile and Fixing Flange

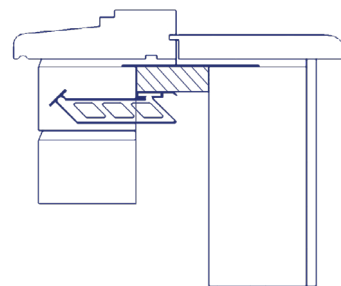
FR60 150+ | Over 150mm up to 300mm cavities



Fig.1 Flush jamb

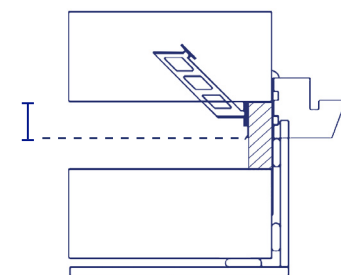


Sill detail



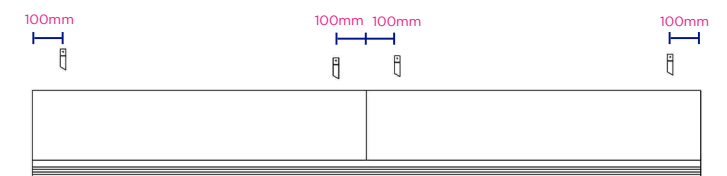
Staggered jamb

At least 30mm overlap to window frame



Thermo-loc FR60+ Profile and Fixing Flange

FR60+ fixing flanges installation



Bill of Quantity

F30 Accessories/sundry items for brick/block/stone walling
Clause

180 | CAVITY CLOSURES FOR CLOSING AROUND WINDOW & DOOR OPENINGS

- Manufacturer: Timloc Building Products, Timloc House, Ozone Park, Howden, East Yorks. DN14 7SD. T: 01405 765 567, W: www.timloc.co.uk
- Reference: eg. FR60/200 (Thermo-loc FR60+, 2.4m, 200mm cavity)
- Accessories: Fixing ties available, 6 No. per 2.4m cavity barrier.