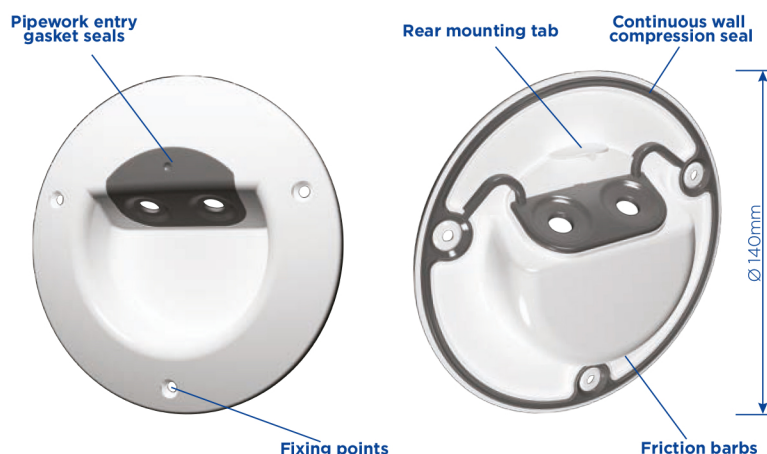


# Radiator Pipe Guide and Seal

Radiator pipework installation aid and solution to eliminate potential air leakage and heat loss at vulnerable through wall radiator pipework entry points.



## Use:

- At the point of entry of through wall 10mm plastic radiator pipework
- Within all wall constructions that present a concealed pipe void including:
  - studded dry lined walls
  - plaster dab solid walls

## Features and benefits:

- Contributes to Part L's required air leakage performance
- Air permeability measured and verified by BRE at Part L's 50Pa as:
  - 0.24m<sup>3</sup> (h.m<sup>2</sup>) under positive pressure test conditions
  - 0.30m<sup>3</sup> (h.m<sup>2</sup>) under negative pressure test conditions
- Centrally and neatly contains the pipework during the plastering process
- Protects the pipework and plaster from direct chafing
- Replaces the requirement of electrical back boxes, intumescent foams or sealants

bimstore.co.uk

Available as a BIM item

- Straight forward and quick face fix installation
- Projects by just 5mm from the wall
- Securely positions the pipework into the required direction for connection
- Eliminates pipework kinking

## Quality:

- Manufactured to BS EN ISO 9001 and BS EN ISO 14001
- Helping to meet Building Regulation:
  - Document Part L - Conservation of Fuel and Power
  - Document Part E - Resistance to Sound

## Material and colour choice:

- Main unit body - white Polypropylene
- Gasket seal entry and seals - light grey Thermoplastic Elastomer

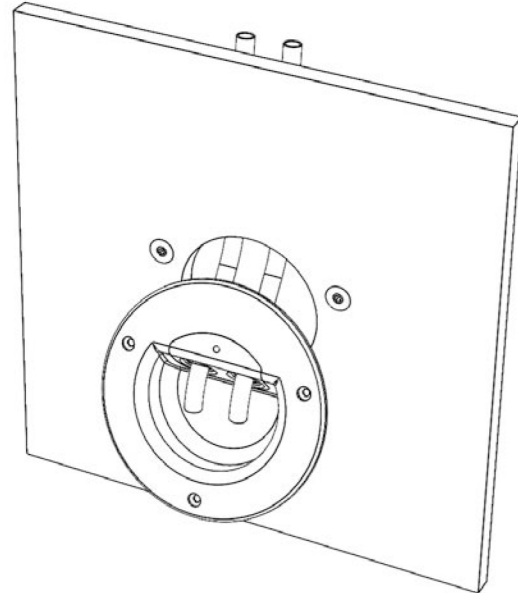
Page 1 of 2

# Radiator Pipe Guide and Seal

Page 2 of 2

## Installation advice:

- Mark the centre of the exit hole with a cross on the wall; approximately 350mm above the floor and central to the final radiator position.
- Secure the pipework with pipe clips approximately 50mm above the marked 'X'.
- Cut a hole (86-102mm diameter or 90x90mm square) into the plasterboard. Ensure that the midpoint of the marked 'X' is in the centre.
- Feed the pipework loop through the hole and cut into 2 equal lengths.
- Position the unit over the hole and feed the pipework through until the unit is positioned into the hole.
- Mark the 3 screw hole locations onto the plasterboard and withdraw the unit to allow for the wall plug fixing.
- Feed the unit back on the pipework and offer the unit back into the hole - aligning the fixing points with the wall plug holes.
- Fully secure the unit by fixing 3 screws into the wall plugs.
- Decorators caulk or another suitable sealant may be required around the perimeter of the unit on uneven wall surfaces to achieve air leakage levels.



## Product codes:

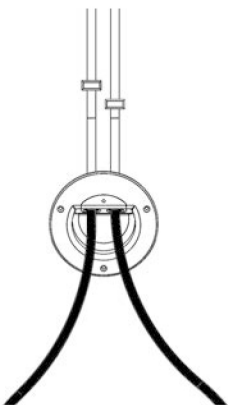
**n55Plus**

Description	Product diameter	Installation method	Product code
Radiator Pipework Air Barrier	140mm	Face fix	1115

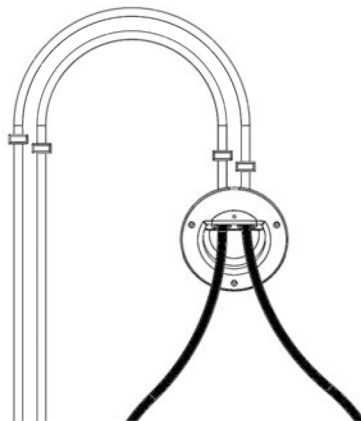
## Technical considerations:

Accepts routed pipework from:

a. Ground Floor Routing



b. Upper Floor Routing



c. Horizontal Routing

