



ECONOSTORE
STOKVIS
ENERGY SYSTEMS

BROCHURE

Content

Introduction to the Econostore	
Upgrades and accessories	3
Control panels	4

The Econostore by Stokvis:

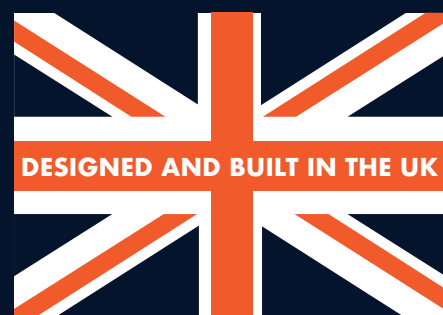
The Stokvis Solution to semi-instantaneous commercial hot water supply.

- It's intelligent
- It's intuitive
- It's flexible

The Econostore is a ready-made solution in one compact package. All required control components such as valves and pumps are pre-selected and installed to perfectly complement the required heat loads and duties of the system.

Due to the flexibility of the Econostore, it's the perfect solution for almost any commercial application with a high demand for hot water.

Simple, Dependable, Proven.



How does the Econostore work?

Econostore units combine 2 of the most well-known methods of providing hot water, instantaneous, and storage.

This results in a compact, efficient, semi-instantaneous solution that can provide hot water in high volumes at specific periods when required, a continuous flow-rate even once the storage vessel has been depleted, and extremely fast vessel recovery times.

The primary control components continuously monitor and regulate the temperature and flow of energy to ensure the desired output and efficiency is achieved. This method is simple, efficient and delivers proven results.

What makes the Econostore such a great option for commercial hot water supply?

We've invested time, experience and technology in to the Econostore, and we promise that it's the most efficient, smart, easy to use product of its kind. We've been supplying hot water equipment for projects for over 30 years, and in that time, we've become leaders in commercial and industrial heating and hot water – evolving our products and keeping them at the forefront of performance and efficiency.

The Econostore by Stokvis offers:

- Semi instantaneous hot water supplied on demand or rapidly reheated
- Pre-programmed, intuitive control panel
- Optional 7" touch screen display upgrade
- Available with a standard range of storage capacities of 250, 300, 500, 800 and 1,000 litres
- Duty Outputs from 50kW to 250kW with peak outputs of up to 5000 litres an hour
- Larger storage options and increased outputs available on request
- Low Energy Pumps for increased efficiency
- Low Maintenance Costs
- Primary heat source flow temp from 70 deg C to 90 deg C
- Ease of Installation due to Pre-Plumbed Pipework supplied fully assembled for ease of install
- Selectable high temperature lockout modes with built in manual reset limit stat

Control Panels

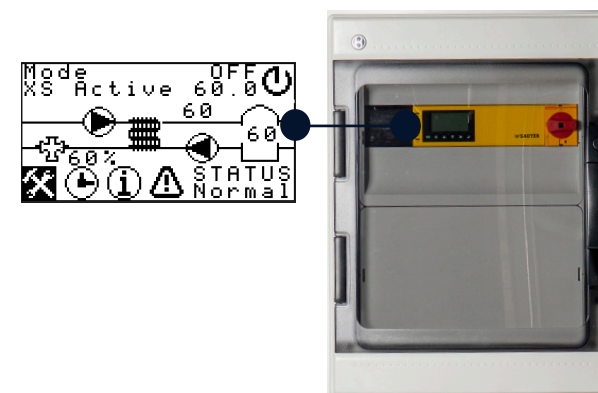
Lying at the heart of the development of our most recent Econostore software, was our desire to create a market leading, but simple and stress-free user interface experience. This has been coupled with a drive to expand the capabilities and possibilities of hot water supply equipment. Everything from basic procedures such as commissioning and altering set points, through to more complex procedures such as schedule setting and alarm point setting have been designed with ease of use and access in mind. With full BMS connectivity and integration on all models, and an ability to identify system faults early on via the enhanced monitoring system, this is a truly intelligent control panel.

There are 2 options of control panel available on the Econostore. This allows for greater flexibility in terms of user interface, and specific site requirements.



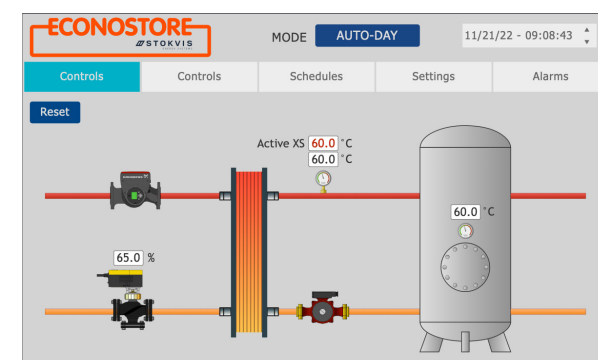
Econotrol T1:

Our T1 controller comes as standard on all models and variants of the Econostore. This unit offers a simple graphic based home screen, with a menu of options giving access to every level of functionality, management, and monitoring.



Econotrol T2:

Our T2 touch screen controller offers a user interface like no other on a semi-instantaneous hot water supply unit. With a 7", full colour, touch screen display, this option truly takes the Econostore into another class. The home screen displays a model relevant graphic showing continuously monitored performance data, such as secondary flow temp, vessel temp, and valve open percentage. Hi-limit and lockout alarms are also displayed with a visual representation of the source.



Additional Accessories:



Expansion vessels



Anti-vacuum valve



Auto air vent



Pressure reducing valve



Pressure relief valve



Temperature & pressure relief valve



Stokvis Energy Systems
Tom Dando Close
Normanton, WF6 1TP, UK

Phone: +44 (0)20 8783 3050
Email: info@stokvisenergysystems.com

www.econostore.uk