



By Appointment to H.M. the Queen, Building Material Manufacturers
Sovereign Chemicals Limited, Barrow in Furness

effective solutions for building renovation and conversion





sovereign chemicals

introduction

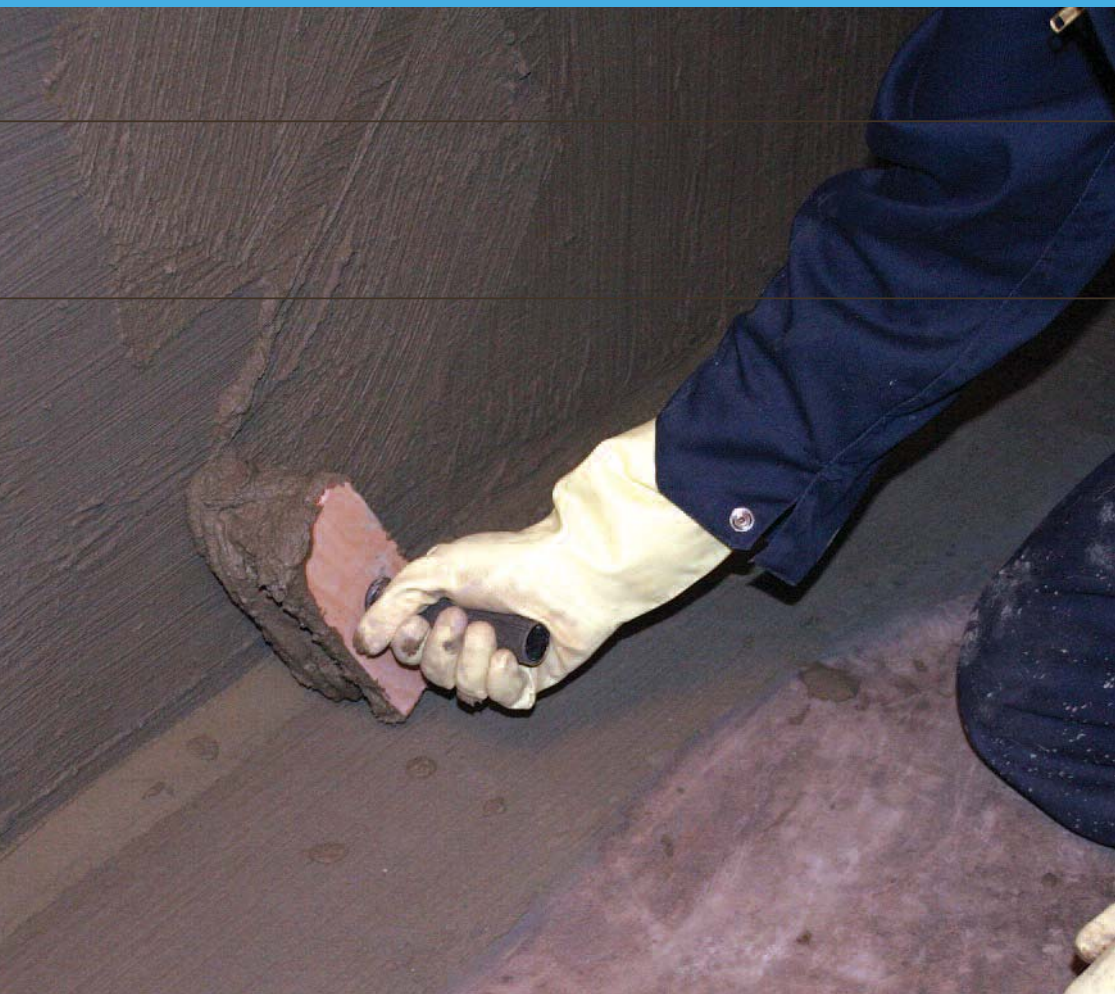
Founded in 1965, **Sovereign Chemicals Limited** has long been recognised as a respected name in the manufacture and supply of products and equipment for the building and construction industry. The Company is the sector's acknowledged leader in the development and supply of specialist materials and systems for damp proofing, structural waterproofing and timber preservation.

Sovereign offers a comprehensive range of both remedial and general building products that combine unrivalled specifications and reliability with authoritative, helpful technical support. At **Sovereign** we pride ourselves on offering top quality products manufactured in Britain to exacting formulations at our own Barrow-in-Furness site in Cumbria.

We are committed to continually improving both our extensive product range and our already excellent levels of service; helping ensure we match the demands and requirements of every customer.

The sheer quality of **Sovereign** products is reflected in our coveted Queen's Royal Warrant. It was awarded in 1987 in recognition of the great success with which our building products had been used at several Royal residences.

Our Royal seal of approval is complimented by our British Standards Institution Registered Firm status. This is one of the highest accolades that any company active in industry can hope to achieve. The Company satisfies the demanding requirements of BSEN ISO 9001/9002 for its manufacturing systems and product quality. **Sovereign** was the first Company in the damp proofing field to gain BSI approval for its whole range of products.



waterproofing

K11 Tanking System

Sovereign Hey'di K11 is a modified cement which is mixed with SBR Bonding Agent and water, producing a waterproof slurry coating to prevent both damp and water penetration. The chemicals in the slurry react, penetrate and fill off or block the capillaries, bonding onto the prepared surface, forming a strong monolithic bond enabling it to resist hydrostatic water pressure.

Lateral/penetrating damp in above and below ground situations can be resolved for both old and new buildings, whilst the effects of rising damp can be controlled using the **Sovereign** Hey'di K11 Tanking System. The K11 Tanking System has proved to be highly successful for damp proofing/waterproofing varying types of structure worldwide for many years. The **Sovereign** Hey'di K11 Tanking System has been independently tested and shown to withstand at least 15 bar pressure on the negative side (internal side of a basement), and is also covered by British Board of Agrément Certificate 91/2608.

Typical areas of usage for the K11 System include:

- Below ground level waterproofing such as in basements/cellars
- Damp proofing in lieu of installing a damp proof course
- Above ground damp proofing to combat the effects of rainwater penetration
- Flood remediation
- For holding water in structures such as swimming pools, ponds, etc.





cavity drain membranes

SovDrain

Sovereign SovDrain Cavity Drainage Membrane (CDM) System is a damp proofing and waterproofing system based on a range of cavity drain membranes, ancillary fixing and jointing materials, and drainage and pumping systems.

At the centre of this advanced system is a comprehensive range of cavity drainage membranes which are supplied as rolls of high density polyethylene (HDPE), moulded to form a studded drainage core. The **Sovereign** SovDrain CDM System is ideal for a variety of both above and below ground situations; providing an effective water and vapour membrane and barrier against salt contamination and transfer.

Typical areas of usage for the SovDrain System include:

- Below ground level waterproofing in areas such as, basements, cellars and vaults
- Above ground damp proofing to combat the effects of rainwater penetration
- To provide an effective barrier against dampness and salt contamination
- Flood remediation





rising damp barrier

Injection Cream

Sovereign Injection Cream is a blend of silane and siloxane emulsion that reacts with moisture to form a highly effective hydrophobic barrier against the common problem of rising damp in masonry structures.

The viscous cream is quick, simple and easy to install; and is thick enough to remain within the injection hole, preventing the unsightly staining that is a problem with some products.



epoxy resin-based

Damp Proofing Membrane



Sovereign Epoxy DPM is a solvent-free two-part resin that chemically cures to provide a surface membrane.

Epoxy DPM is ideal for use in properties where dampness is found to be rising through a concrete floor as a result of a defective or missing sheet membrane. It can also prove useful to suppress residual moisture in concrete and sand cement screeds allowing early installation of floor coverings.





sulphate-resistant finishes

Ready Render



Sovereign Sulphate Resistant Ready Render is a blend of cement, fine sands and lime combined with special additives that minimise 'water demand' whilst also improving workability and adhesion. The dry-blended mix has been developed for both internal or external application onto most traditional masonry backgrounds, such as brickwork and blocks.

Ready Render can be mixed and applied using either mechanical spraying machines, or by hand. It offers the distinct advantage of being applicable in a layer of up to 30mm in a single application.

plastering

Renderlite

Renderlite Renovating Plaster

Sovereign Renderlite Renovating Plaster is an incredibly lightweight pre-blended and dry bagged cement-based plaster. It is used for plastering most traditional background materials on both new and existing masonry substrates. Renderlite is found particularly useful where dampness has been an issue and can be used following the insertion of a remedial damp proof course during renovation work.

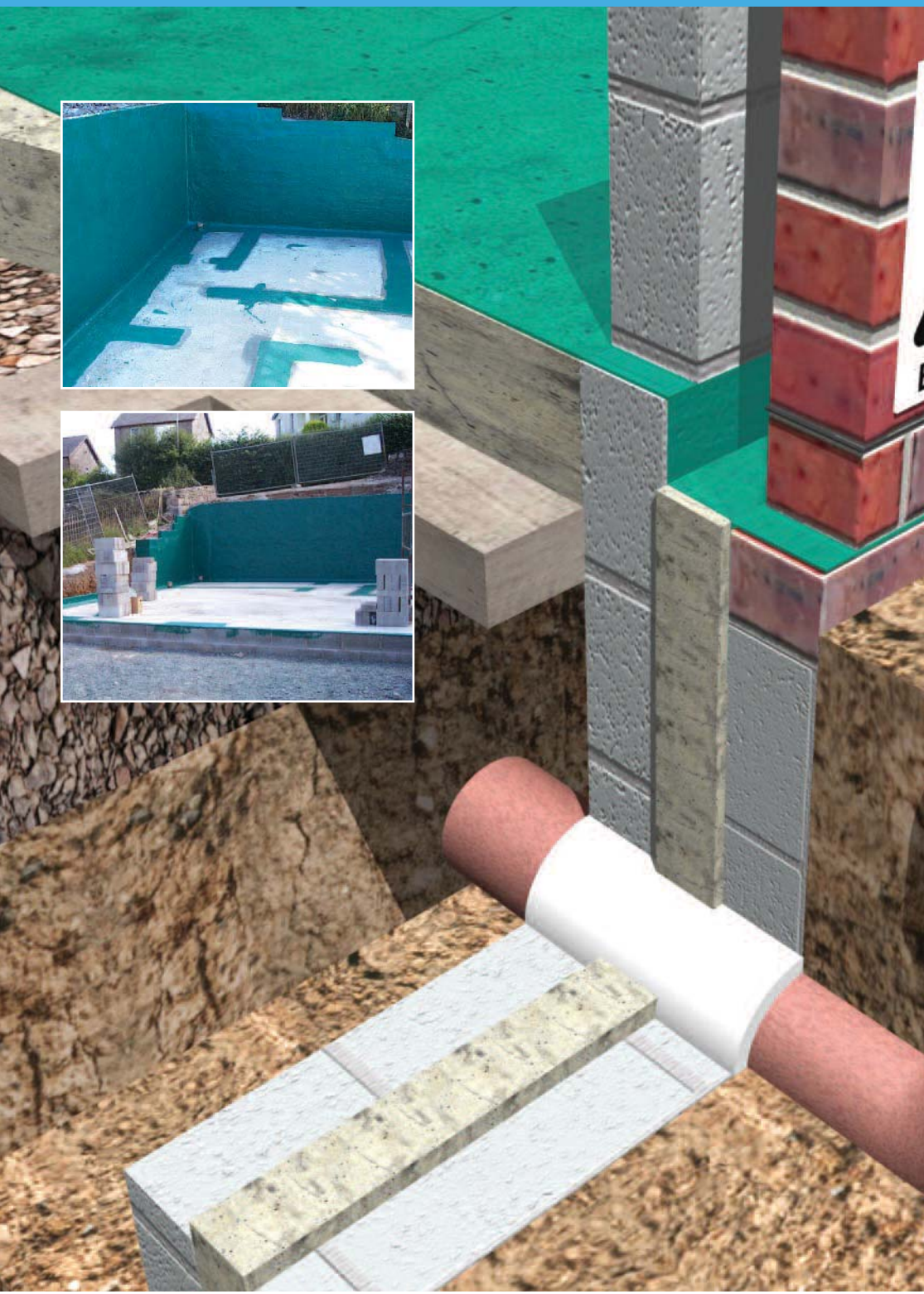
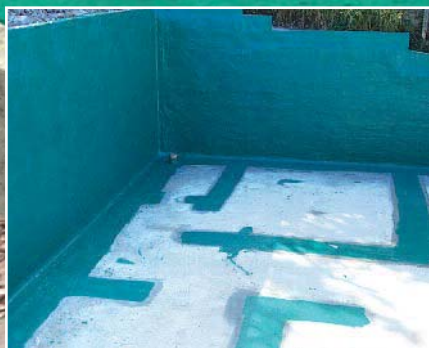
Renderlite Renovating Plaster has been developed to give similar properties to a traditional 1:1:6 cement-lime-sand mix,

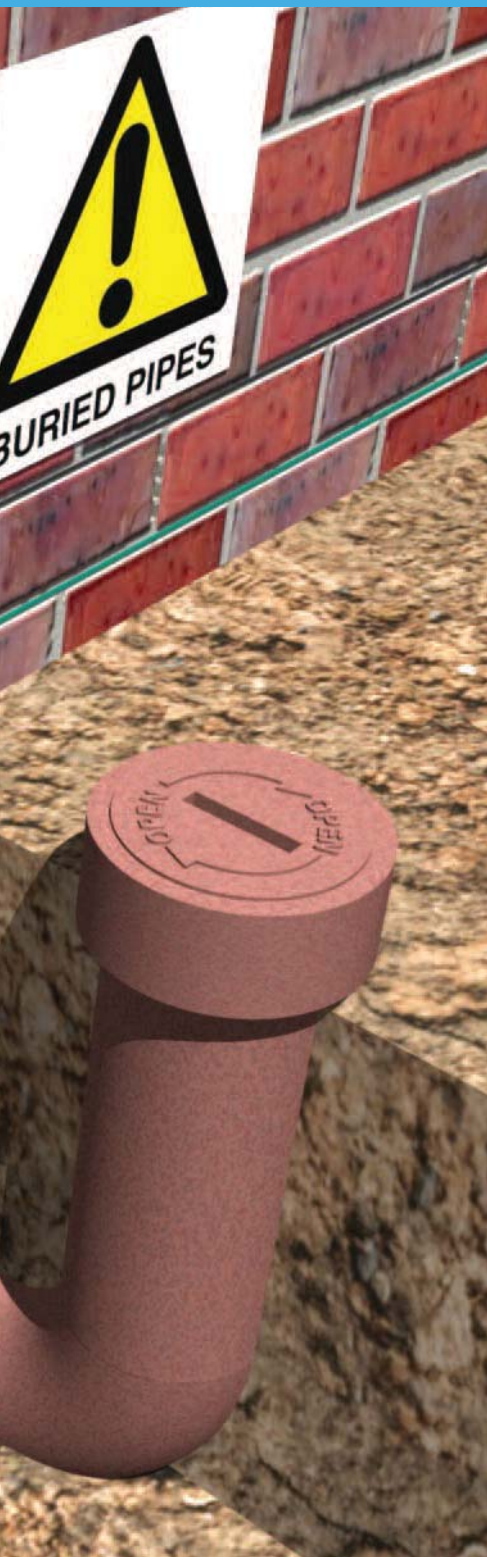
but with the sand element being replaced by a lightweight aggregate - making it both user friendly and thermally efficient.

Renderlite Finish Plaster

Sovereign Renderlite Finish Plaster is a hard, durable product designed for use over Renderlite Renovating Plaster, as well as more traditional cement-based backing renders. Renderlite Finish Plaster also has the advantage of being able to be re-tempered after mixing giving a working time of up to 80 minutes.







radioactive gas protection

Radon Barriercoat

Recent years have seen recognition of the significant health risks posed by naturally occurring Radon radioactive gas emissions.

Sovereign Radon Barriercoat is a ready to use specialist styrene butadiene latex-based material applied in liquid form that offers a simple, continuous passive system to the full footprint of both new and existing buildings.

The coating combines basic radon protection with a waterproof membrane that complies with Schedule 1 of the Building Regulations 1991 for England and Wales parts C2 and C4.

Radon Barriercoat's easy brush-on application makes it particularly beneficial where complex profiles or detailing would be difficult to effectively seal with a sheet membrane.



Kills E-coli,
Salmonella
and Streptococcus

kills lichen, algae and bacteria

Masonry Sterilising Wash

Sovereign Masonry Sterilising Wash comprises a concentrated blend of a Quaternary Ammonium Salt, a degreasing agent and other additives in water that is effective in killing off active growths of lichen, mould and algae.

Sovereign Masonry Sterilising Wash is also highly active against most harmful bacteria, such as E-coli, Salmonella and Streptococcus.

This product also forms an integral part of the procedure in treating/re-instating flooded properties.





paint-on damp prevention

Water Repellents

Sovereign provide a range of Water Repellents supplied in either liquid or cream formulations, designed to prevent penetrating dampness. They are suitable for application onto a variety of prepared wall backgrounds such as brick, stone, concrete, masonry and other porous surfaces.



timber treatment paste

DeepKill

Sovereign DeepKill Timber Paste provides an effective means of delivering highly active fungicides and insecticides in areas where deep penetration is required.

DeepKill can be used on all types of soft and hard woods, and is particularly useful on large section timbers, such as beams, purlins and joists. The product is used for both curative and preventative preservation of timber from wood-destroying fungi and infestation by wood boring insects.

On application, the paste forms a skin preventing evaporation of the carrier solvent - maximising the uptake of active material into the timber.



timber isolation

Bower Beams

Timber that is in contact with damp masonry is vulnerable to attack from Dry and/or Wet Rot. Vulnerable timbers typically include floor joists in suspended ground floors. In many older buildings joist ends are set into sockets in the walls without any form of isolation. As a result they are often permanently damp and inevitably succumb to rot and decay and possibly associated insect infestation. Though often just a small part of the joist is affected, outright replacement of the decayed joist ends is essential, often requiring substantial amounts of costly, disruptive work.

Sovereign Bower Beams are 'L' shaped galvanised metal sections that are fixed to existing cut back joists, making the arduous work of joist end replacement simpler, whilst providing a strong, reliable new joist bearing end.





wood treatments

Liquid Preservatives

Sovereign manufacture and supply a range of effective remedial preservatives used for the prevention and eradication of both the wood destroying fungi that cause rot and destructive wood boring insects, such as the Common Furniture Beetle (woodworm).

Sovereign preservatives are usually supplied in a concentrated micro emulsion form that is quickly and easily diluted in clean water prior to application using a spray or brush.





sovereign remedial products

Condensation Solutions

Sovereign are recognised experts in the remedial treatment of condensation that is the most common cause of dampness issues in the home. Excess moisture in the air from cooking, drying clothes and washing etc. condenses as droplets on cold surfaces of inadequately heated, poorly ventilated rooms.

Improving ventilation (simply opening a window makes a big difference!), heating and insulation helps reduce condensation, but frequently more direct remedial steps are necessary. **Sovereign** manufacture and supply a broad spectrum of treatments and equipment, ranging from anti-mould products, sterilising solutions and highly mould-resistant paints, to both passive vents and active ventilation systems.

Call 01229 870 800 to request your **FREE** booklet on the causes of condensation and **Sovereign's** highly effective mould treatments, coatings and ventilation products.





sovereign building products

Comprehensive Range

Sovereign supply a comprehensive range of other high quality general building products. These include a wide variety of admixtures, surface coatings, sealants, wood treatments and high quality grouts and adhesives ...**Don't forget** Sovereign also supply all the equipment essential for your Health & Safety.



Sovereign develops and manufactures a range of over 800 remedial treatments and general building products. Each one combines exacting formulation and premium level specifications with an unrivalled technical support service. In addition to being in receipt of The Royal Warrant, **Sovereign** has also been accredited to BS EN ISO 9001/9002 for its manufacturing systems and product quality, and was the first company in the damp proofing sector to achieve BSI approval for its entire range.

Sovereign is committed to continual improvement of its products and service levels and works in close partnership with customers to constantly develop innovative new solutions and technologies. As part of this process, the Company has become a leader in the promotion of environmentally responsible technologies; where possible using recycled raw materials to cut waste and water-dilutable concentrates to reduce transport volumes and the carbon footprint.

Further information on **Sovereign's** comprehensive range of innovative building and construction products may be found by visiting the Company's website, www.sovchem.co.uk

©2013 Sovereign Chemicals Limited. Designed by carnewhitney.com 01228 596 895.



Sovereign Chemicals Ltd, Park Road, Barrow-in-Furness LA14 4EQ. sales@sovchem.co.uk

01229 870 800 www.sovchem.co.uk