

SX70 AQ70

Decorative Protection for Wood

SX70 and **AQ70** offer a complete decorative protection system for wood in a range of popular colours. Both products are easily applied directly to bare wood without need for primer or undercoat. Application of just two coats delivers a superb finish that allows the beauty of the natural grain to shine through.

SX70 is a high quality solvent-based microporous woodstain which provides around four years' water-resistant protection. **AQ70** is an advanced acrylic/polyurethane treatment which offers comparable performance to the **SX70** range in a water-based formulation.

Both products in the **Sovereign Decorative Wood Protection** range are ideally suited for the treatment of hard or soft wood in external applications. **SX70** and **AQ70** offer superb coverage, delivering an attractive, long-lasting finish to a wide variety of window frames, fascias, doors, cladding, fencing and garden furniture, and can also be used on interior woodwork.

Further information is available from www.sovchem.co.uk or the Sovereign Technical Support line 0845 603 0722.

Sovereign develops and manufactures a range of over 800 remedial treatments and general building products. Each one combines exacting formulation and premium level specifications with an unrivalled technical support service. In addition to being in receipt of The Royal Warrant, **Sovereign** has also been accredited to BS EN ISO 9001/9002 for its manufacturing systems and product quality, and was the first company in the damp-proofing sector to achieve BSI approval for its entire range.

Sovereign is committed to continual improvement of its products and service levels and works in close partnership with customers to constantly develop innovative new solutions and technologies. As part of this process, the company has become a leader in the promotion of environmentally responsible technologies; where possible using recycled raw materials to cut waste and water-dilutable concentrates to reduce transport volumes and the carbon footprint.

Further information on **Sovereign's** comprehensive range of innovative building and construction products may be found by visiting the company's website, www.sovchem.co.uk

Disclaimer: The colours given in this chart are for guidance only, final finish is dependent upon the type and condition of timber being treated, and the number of coats applied. SX70 and AQ70 are not suitable for use on horizontal and trafficked timber, such as decking.

Information given is in good faith based on experience and usage, however all recommendations are made without warranty or guarantee, since the conditions of use are beyond our control. All goods are sold in accordance with our Conditions of Sale, copies of which are available on request. Customers are advised that product, techniques and codes of practice are under constant review and changes occur without notice. Please ensure you have the latest updated information.

©2012 Sovereign Chemicals. Designed by camewhitney.com 01228 596 895.



By Appointment to H.M. the Queen, Building Material Manufacturers
Sovereign Chemicals Limited, Barrow in Furness

SX70

Decorative Protection for Wood

AQ70



Sovereign Chemicals Limited
Park Road, Barrow-in-Furness LA14 4EQ
Fax: 01229 870 850 Email: sales@sovchem.co.uk

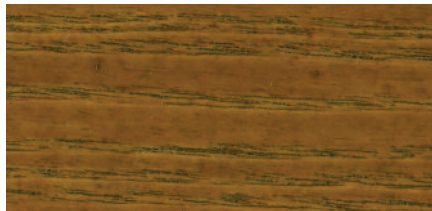
01229 870 800
www.sovchem.co.uk

COLOUR GUIDE



SX70 AND AQ70 COLOUR GUIDE

TEAK *available in both SX70 and AQ70.*



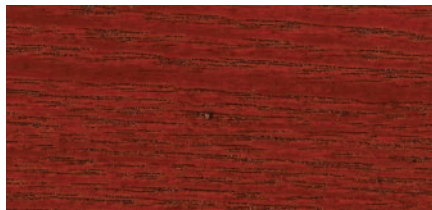
LIGHT OAK *available in both SX70 and AQ70.*



BLACK *available in both SX70 and AQ70.*



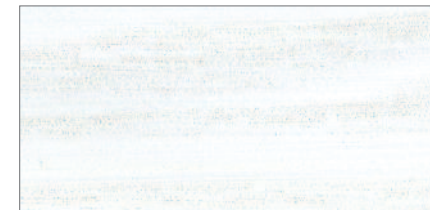
RED CEDAR *available in both SX70 and AQ70.*



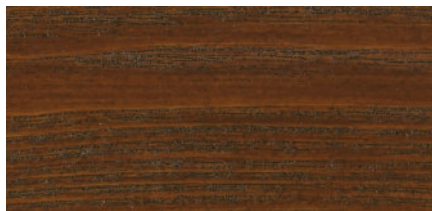
MID OAK *available in both SX70 and AQ70.*



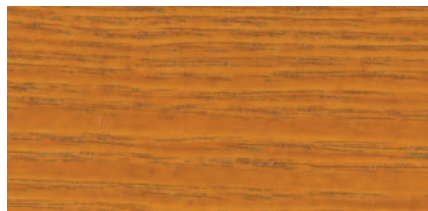
WHITE *available in both SX70 and AQ70.*



WALNUT *available in both SX70 and AQ70.*



PINE *available in both SX70 and AQ70.*



UNTREATED SAMPLE *for comparison.*



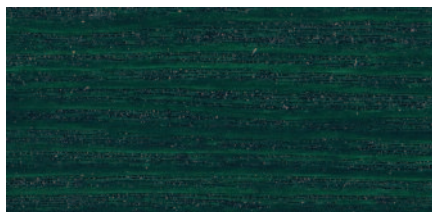
MAHOGANY *available in both SX70 and AQ70.*



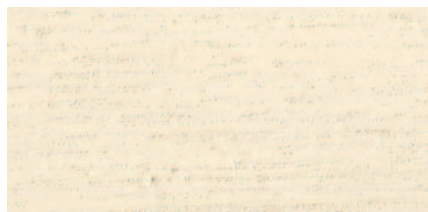
ANTIQUÉ PINE *available in both SX70 and AQ70.*



SPRUCE *available in both SX70 and AQ70.*



CREAM *available in SX70 only.*



Please note: The colours given in this chart are for guidance only, final finish is dependent upon the type and condition of timber being treated, and the number of coats applied.

Preparation and Application in brief

SX70 and **AQ70** have been specially developed for application onto bare timber or existing woodstains. A minimum of two coats should be applied using a high quality woodstain brush, working in the direction of the grain using the minimum number of brush strokes.

Timber to be treated should be clean and dry. Any pre-existing paint or varnish must be fully removed back to clean, bare timber. Previously stained timber should have any loose, flaky material removed before the surfaces are lightly sanded in the direction of the grain.

Knotting solutions should not be used, any resinous deposits should be scraped off and cleaned with methylated spirits. Holes and nails should be filled using **Sovereign Stainable Wood Filler**. **SX70 Basecoat** is a workshop primer that provides temporary protection for timber until finished on site. **SX70 Topcoat** is a clear product for use over **SX70** wood colours to provide extra protection.

Full preparation and application details included on each tin, or are available at www.sovchem.co.uk