



The Akeman Collection™ Stair Rods & Fixing Eyes

Stair Rods & Eyes - The Akeman Collection™

Manufacturing Lead Times

Lead times are indicative and are based upon typical rod orders up to 60 per consignment. For orders in excess of this number it may be necessary to increase lead times.

Polished Brass Finish:

4-5 working days

Antique Brass & Antique Bronze Finishes:

14 working days / 3 weeks

Chrome & Nickel Finishes:

14 working days / 3 weeks

Please note, indicative lead times are given for the manufacture of goods ready to despatch to customers.



Stair Rods & Eyes -The Akeman Collection™

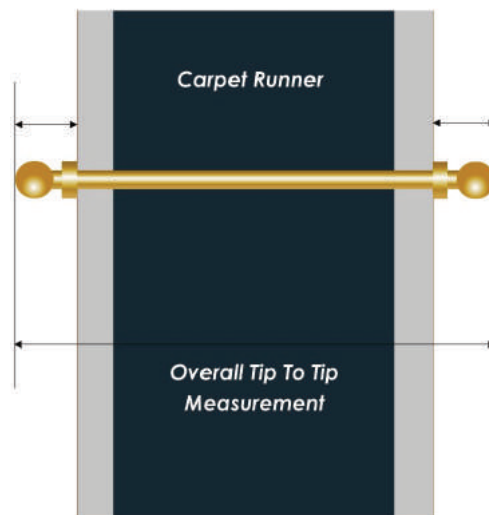
Measuring And Installation - Carpet Runners

For rods with turned finials, measure the full width of the runner and add a minimum of 100mm for 10mm, 12.5mm and 16mm rods. For 19mm rods, rods with large finials and triangular rods, an additional 150mm is desirable having considered the width of the staircase available.



Measuring

Example (for reference only):



E.g. 1 - rods with turned finials, if carpet runner is 686mm (27"), overall rod size required tip to tip is 786mm minimum.

E.g. 2 - rods with large finials and triangular rods, carpet runner is 686mm (27"), overall rod size required tip to tip is 836mm minimum.

Installation

Fix eyes into tread riser directly alongside the edge of the carpet runner, leaving a gap of approximately 3mm (1/8").

For concrete stairs use rawl plugs for screw fixings.

When fixing to timber stairs, direct screw into tread and riser. Note, if wood is particularly hard, it may be required to pilot drill before fixing with screws.

Stair rods are for aesthetic purpose only. Always use wooden gripper to fully secure carpet on stairs.

The C.A.T. sales office is always happy to provide technical advice and assistance on how to measure the rods and eyes.



Stair Rods & Eyes - The Akeman Collection™



Hinged eye



Solid Brass Round Rods with Turned Finials and Two Hinged Eyes

C.A.T. offers solid brass rods with turned finials in a range of diameters/sizes to suit various installations. These sizes include, 10mm / $\frac{3}{8}$ ", 12.5mm / $\frac{1}{2}$ ", 16mm / $\frac{5}{8}$ ", 19mm / $\frac{3}{4}$ ".

These stair rods are available in Polished Brass, Satin Brass, Antique Brass, Antique Bronze, Chrome, Satin Chrome, Nickel & Satin Nickel.



Solid Brass Round Rods with Large Finials and Two Hinged Eyes

C.A.T. offer solid brass rods with large turned finials in a range of diameters/sizes to suit various installations. These sizes include, 12.5mm / $\frac{1}{2}$ " and 16mm / $\frac{5}{8}$ ".

These Stair rods are all available in Polished Brass, Satin Brass, Antique Brass, Antique Bronze, Chrome, Satin Chrome, Nickel & Satin Nickel. Please note both the Nickel and Satin Nickel finishes are only available in the 12.5mm diameter rod.



Solid Brass Triangular Rods with Welded Finials and Two Hinged Eyes

C.A.T. offer solid brass triangular rods with welded finials in a range of finishes including Polished Brass, Satin Brass, Antique Brass, Antique Bronze, Chrome and Satin Chrome.

Stair Rod Fabrication

Please note that Stair Rods can be curved to a supplied template, for more information please call our customer service team on 01582 561 500.

Finishes



Polished Brass



Satin Brass



Antique Brass



Antique Bronze



Chrome



Satin Chrome



Nickel



Satin Nickel



Samples Available



Stair Rods & Eyes - The Akeman Collection™

Solid Brass Rods With Turned Finials

Rods are produced cut to customer sizes and machine turned with choice of finial.

Supplied with two hinged fixing eyes per rod.

Choice Of Finials

(finial dimensions are for 12.5mm rods)



Finial Availability On Rod Diameters

	10mm	12.5mm	16mm	19mm
Ball	●	●	●	●
Acorn	●	●	●	●
Castle	●	●	●	
Coronet		●		
Minstrel		●		
Oval		●		
Spear		●		
Solar		●		
Beacon		●		
Turret		●		

Stair Rods & Eyes - The Akeman Collection™



Solid Brass Rods With Large Finials

Choose large finials for impact and effect.

These large finials look particularly effective when fitted onto 12.5mm diameter rods.

Supplied with two hinged fixing eyes per rod.

Choice Of Finials

suitable for 12.5mm and 16mm rods



Ball



Acorn



Pineapple

Choice Of Finials

suitable for 12.5mm rods



Hinged Eye



Paris



Manhattan



Jester

Measuring For Rods With Large Finials

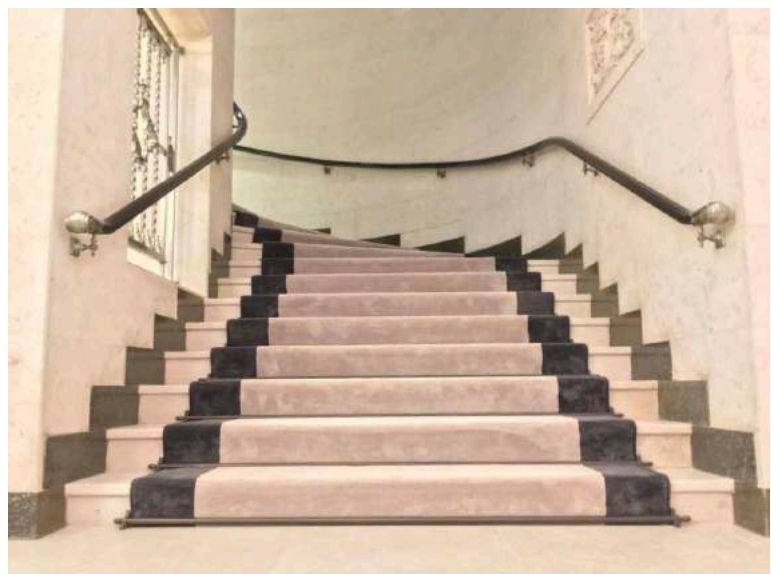
For rods with large finials, measure the full width of the carpet runner and add a minimum of 150mm having considered the total available staircase width.

For further information, please see tips for measuring for stair rods in this section.

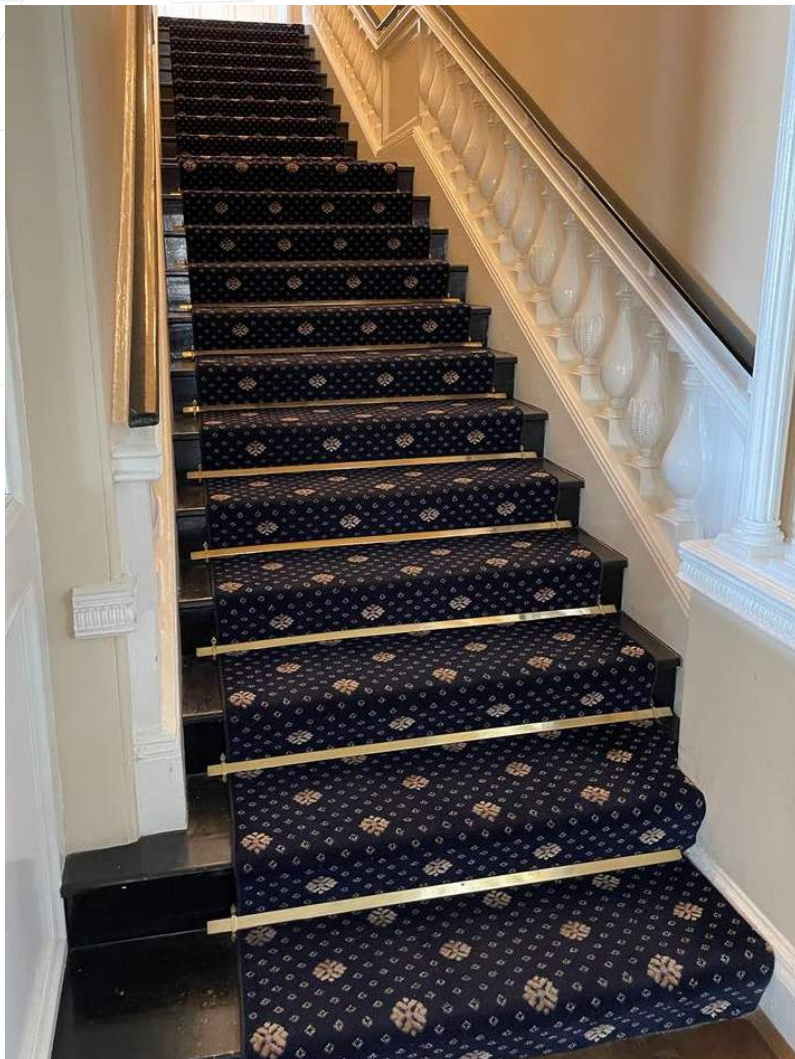
Special Finishes

Available on these rods.

Contact the C.A.T. sales office for further details.



Stair Rods & Eyes - The Akeman Collection™



Triangular Brass Stair Rods

Rods are produced in solid brass triangular rod with a 22mm face.

A stylish alternative in the right environment to round stair rods, triangular rods are cut to customer sizes and then finials are welded to the ends and hand finished and polished. Supplied with two hinged fixing eyes per rod.



Hinged Eye

Special Finishes

Triangular rods are available in a range of finishes.

Please refer to the Special Finishes section of this catalogue.

Choice Of Finials



Fleur-De-Lys



Spear



Trefoil



Plain

If finials are not preferred, rods can be supplied with plain cut ends which are finished to match the face.

Measuring For Triangular Rods

For rods with welded finials, measure the full width of the carpet runner and add a minimum of 150mm having considered the total available staircase width.

For rods with plain ends, an additional 100mm will suffice.

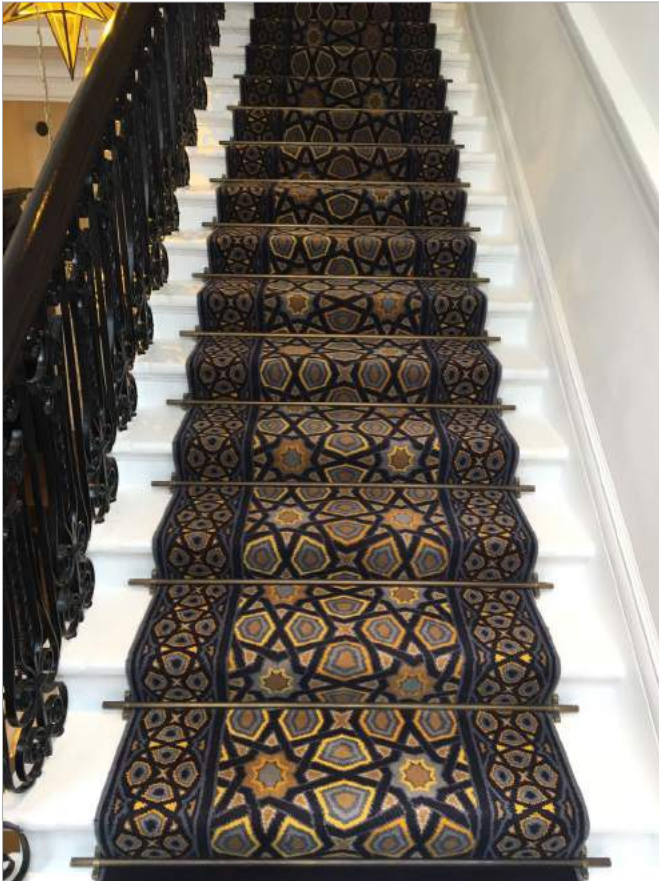
For further information, please see tips for measuring for stair rods in this section.

Stair Rods & Eyes - The Akeman Collection™

Special Finishes

We first had the idea to produce special finishes on stair rods and eyes in 1997 to a great reception from designers and the flooring industry.

New look or old effect, C.A.T. brass stair rods are available in a variety of special finishes to complement interior designs. Please check with our sales office for suitability of finish with rod selection and intended installation.



Chrome and Nickel

For superb contemporary effects.



Bright Nickel & Bright Chrome



Satin Nickel & Satin Chrome

Important note:

Finish images are subject to print interpretation.

Samples of finishes are available upon request.

Finishes Available On Rods

Finish	10mm	12.5mm	16mm	19mm	Triangular
Bright Chrome	•	•	•	•	•
Satin Chrome	•	•	•	•	•
Bright Nickel		•			
Satin Nickel		•			
Antique Brass	•	•	•	•	•
Antique Bronze	•	•	•	•	•

For availability of finishes on other rod diameters, please contact the C.A.T. sales office.

Antique Finishes

Antique finishes are applied and distressed by hand to brass rods and eyes creating an aged effect.

This hand finishing process produces variance in shade from batch to batch.

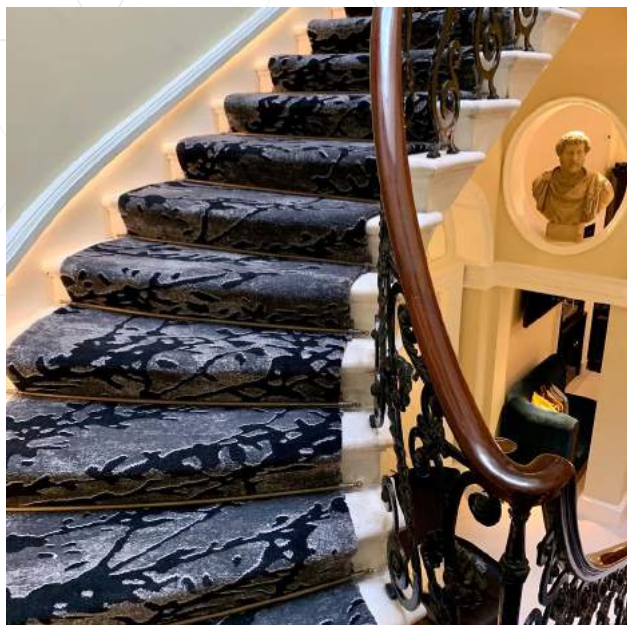


Antique Brass & Antique Bronze

Stair Rods & Eyes - The Akeman Collection™

Special Products and Services

Stair Rod Fabrication



Stair Rod Joining Detail



For wide staircases, including theatres and public buildings, occasionally rods are required over 3m in length.

For 19mm rods, a joining detail is available though we would also advise a centre fixing eye be installed.

Special Fixing Eyes  To Special Order



High style hinged eye for 12.5mm diameter rods. Specification as standard hinged eye but with deeper tread and riser detail. Recommended for use with thicker carpet on felt.

Re-Polishing Services



At C.A.T., we often receive requests from customers to refurbish old rods and eyes.

Subject to sight of the rods, we are happy to re-polish customer rods and strip old paint if required.

Stair Rods & Eyes - The Akeman Collection™ Maintenance Guide



Data provided is not intended as confirmation of product properties and does not constitute a legal contractual relationship, nor should it be used as a basis for ordering products.

Our sales personnel are always happy to give customers individual advice on the best way to maintain rods given different situations.

For customers with old tarnished rods, we are happy to re-polish once having inspected them given an assessment of the level of finish than can be achieved.

Re-Polishing



The image above shows old tarnished rods before and after re-polishing .

Brass Rods



All brass will tarnish with atmosphere. In order to maintain a polished finish on rods, regular polishing is required with a suitable metal polish.

Regular polishing is particularly important in public areas where contact with passers by and even beverages can tarnish the surface of the brass.

We do not recommend the use of any water based cleaning agents as this is very likely to accelerate tarnishing and can lead to staining and corrosion.

Please note the longer water stains or water based cleaned surfaces are left unpolished, the more difficult it is to remove stains.

Lacquers are not recommended and will prevent tarnishing for a limited period only and at which time it may be required to strip remaining lacquer and re-polish rods.

Antique Brass And Antique Bronze Rods



Wipe with a dry cloth or duster. Do not use any liquids or metal polishes on these finishes.

Chrome And Nickel Rods



Buff with a dry cloth or duster. A damp cloth may be used for heavily soiled rods but must be dried immediately.

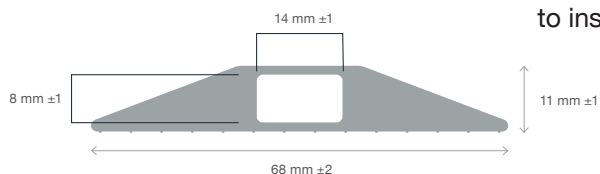
PVC Floor Cable Protector



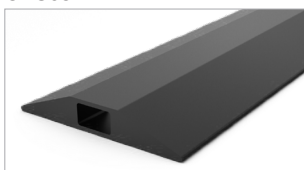


PVC Floor Cable Protector

Single channel, ramped cable protector with an anti-slip base, ideal for single cables. This simple and affordable solution is ideal for avoiding trips and falls in the workplace and is available in 3 or 9 meter lengths. To install cut to desired length and loose lay over the floor covering. The pre-cut slit on the reverse makes it easy to insert cables without the need to unplug or disturb equipment.



CPS68



CPS68

Colour	Stock Length
Black	9m
Black	3m

Colour	Stock Length
Black	9m
Black	3m

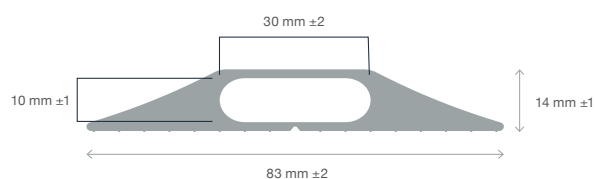
CPSHV68



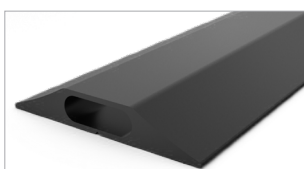
CPSHV68

Colour	Stock Length
Black/Yellow	9m
Black/Yellow	3m

Colour	Stock Length
Black/Yellow	9m
Black/Yellow	3m



CPS83



CPS83

Colour	Stock Length
Black	9m
Black	3m

Colour	Stock Length
Black	9m
Black	3m

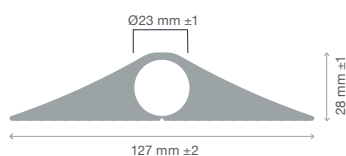
CPSHV83



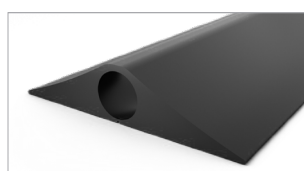
CPSHV83

Colour	Stock Length
Black/Yellow	9m
Black/Yellow	3m

Colour	Stock Length
Black/Yellow	9m
Black/Yellow	3m



CPSHD127



CPSHD127

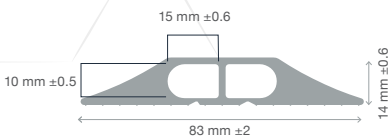
Colour	Stock Length
Black	9m
Black	3m

Colour	Stock Length
Black	9m
Black	3m



PVC Floor Cable Protector

Double channel, ramped cable protector with an anti-slip base, ideal for multiple data cables. This simple and affordable solution is ideal for avoiding trips and falls in the workplace and is available in 3 or 9 meter lengths. To install cut to desired length and loose lay over the floor covering. The pre-cut slit on the reverse makes it easy to insert cables without the need to unplug or disturb equipment.

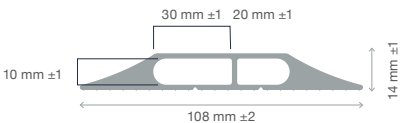


CPD83



CPD83

Colour	Stock Length
Black	9m
Black	3m

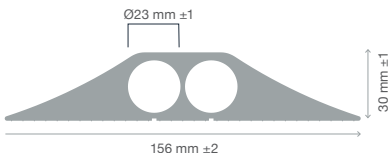


CPD108

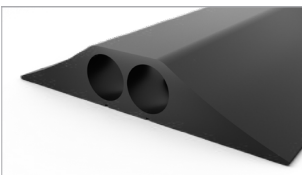


CPD108

Colour	Stock Length
Black	9m
Black	3m



CPDHD156



CPDHD156

Colour	Stock Length
Black	9m
Black	3m