



PROTECTING PEOPLE | SECURING PROPERTY



CHARTER
GLOBAL
PROTECTING PEOPLE | SECURING PROPERTY



Obexion UD SR3 shutter with anti-ram gate; finished in RAL7016 gloss



PROTECTING PEOPLE | SECURING PROPERTY

Intelligent security from a team who understand what you value most.



As specialist providers of high-security physical solutions, we are purposefully challenging the approach to integrating preventative measures within properties of all types.



Engineering preventative measures for both the shell and interior spaces, our inherent focus remains on protecting people from harm and property from destruction.

From luxury homes and national galleries right through to sports and community facilities, every property faces potential threats; the solution is rarely ever simple.

Our expertise in providing the appropriate solutions is a culmination of trial and error, persistence and continued investment in innovation.

Mitigating a range of low to severe risks, we focus on delivering results for a number of niche sectors.

We offer a comprehensive product range through three brands: Obexion, Equilux and Integr8.

We offer a personal service with support to all professionals and individual parties throughout the security industry including:

Security Professionals

Benefit from our understanding and expertise of certified performance standards.

Architects

Bespoke security solutions provided with concept drawings, NBS specifications and DWG drawings.

Portfolio Managers

Dedicated and experienced in-house designers and on-site engineers for smooth-sailing project deliverables.

Contractors

Wealth of knowledge regarding specification with flexibility for site-specific capability.

Ultra-High Net Worth Individuals

High performance solutions tailored to client preference.



With a wealth of in-house expertise and resources, Charter Global provide a complete package; from product guidance, to design and installation through to maintenance.

We believe this unique capability, and a willingness to go the extra mile to achieve our ultimate goal of lifetime customer satisfaction, is what sets Charter Global apart.

Roger Humphreys, Managing Director



Integr8 structural built-in shutters; 50% perforated; finished in anodised silver

OBEXION

SPECIALIST SECURITY SYSTEMS

Renowned for developing the first security shutter to achieve CPNI, DOS and HVM certification, Obexion offers high-performance shell and interior solutions.

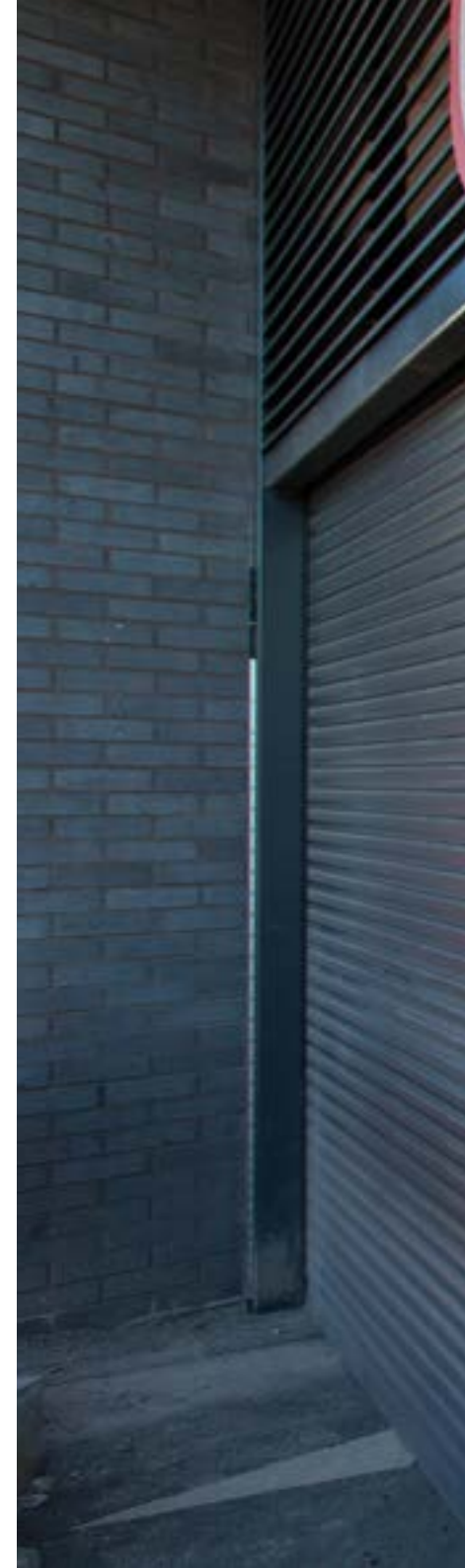
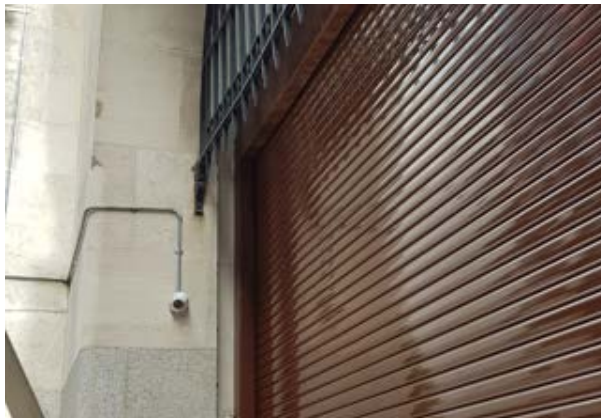
Through many years of development and rigorous testing, the Obexion product range offers the most comprehensive collection of independently certified solutions on the market.

Tested in various attack scenarios, Obexion is certified by the Loss Prevention Certification Board (LPCB) to LPS 1175 Issue 7 SR2 through to SR5. Recognised internationally as one of the few industry-leading certification boards for security

systems, the LPCB is built up from the basics of adequate security to protecting property and people from terror attacks.

The Obexion MD SR5 is the only security shutter certified to LPS 1175 SR5 on the market, developed by the excellent Design and Product team at Charter Global.

Obexion has also successfully achieved independent approval for use by both the UK Government and US Department of State.





Obexion UD SR2 with louvre and SR1 door; 20% perforated; finished in RAL7016



Equilux built-in lintel shutters; finished in RAL7047 matt

equilux

security, style and
peace of mind

Equilux is a unique physical security offering styled for prestigious residential properties.

Founded with the knowledge that standard physical security measures allow no room for compromise, Equilux seamlessly integrates defensive measures into each luxurious property.

Ensuring complete fortification, Equilux enhances the beauty of a property through intelligent and exacting integration methods, along with superior finishes and controls.

Through structural integration during the early stage of refurbishment or build, individuals facing

significant risk remain protected against intruders and premeditated attacks.

Tailored to the property style, architectural design and security requirements, Equilux also offers the latest in prime residential construction, with the ability to intelligently incorporate shutter control through smart home controls or building management systems (BMS).



INTEGR8

innovative roller shutters

Integr8 Security Shutters are a specialist range of roller shutters for local government sectors including community, healthcare and education.

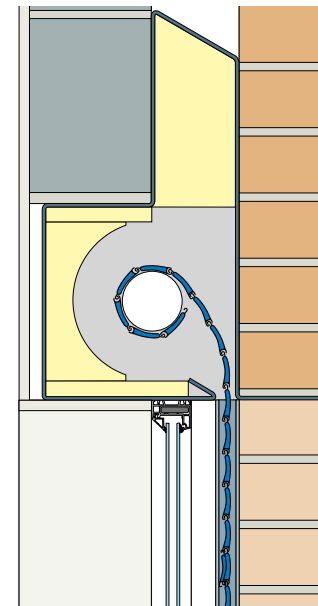
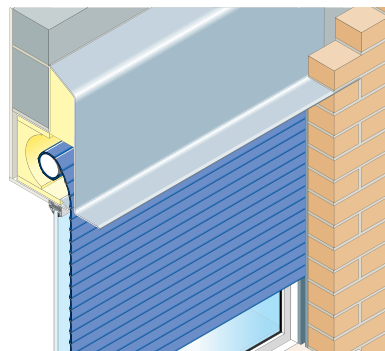
Engineered to integrate within the very fabric of an architectural structure, Integr8 Shutters focuses on causing minimal disruption through lintel specification and on-site fabrication.

Offering discerning specifiers customised interface solutions, Integr8 Shutters have the capability for both structural or non-structural integration.

Catering for the latest in construction technology, Integr8 Shutters is supported by an experienced team of design engineers.

From concept drawings and NBS specifications to project specific challenges, close attention to detail is paid through-out every step of the project.

For the facilities that may otherwise go unprotected, structural integration ensures mitigation of theft, vandalism and destruction of property.





Integr8 structural built-in SR2 shutters with louvre panel; finished in RAL7021 gloss

DESIGN

As a physical security product provider, we have established ourselves as experts in structural integration and the ability to complicated puzzles.

From initial concept and feasibility right the way through to supplying working drawings, our strengths lie in understanding intricate building design.

Our designs engineers, on-site technicians and product development team work endlessly alongside industry accreditation bodies to continually improve and innovate the product range.

Our design team maintain a security conscious approach through-out every project. Along with a full scope of works and NBS specifications, project specific systems and lintel schedules (where relevant) are provided.

Offering unbiased advice, our intention is only ever to provide the most appropriate security measure, innovative construction methods and controls system available.



Equilux built-in shutters; finished in anodised bronze



PROJECTS

Bridging the gap between specification and installation, our project management team works closely with all vested parties to ensure smooth project delivery.

A detailed project programme is always provided to ensure site surveys, manufacture and installation remain on schedule, with input from our in-house design engineers and on-site contractors.

Each project is considered bespoke, with a unique threat profile and therefore challenges.

Tailoring our learned expertise to the each project, our on-site engineers reflect our commitment to maintaining quality throughout the project.



HULL UNIVERSITY PREPARES FOR EXPERIENCED ATTACK: CASE STUDY

Hull was awarded the 2017 UK City of Culture award. The initiative, set up by Department for Culture, Media and Sports, aims to make Hull a cultural destination for must-see events. The first exhibition - and Hull's first public exhibition - of the year showcased a selection of works from artists through the ages include Michelangelo and Rembrandt.

The event was hosted by Brynmor Jones Library at Hull University. The exhibition included collections from British Library and a combined value of over £35 million.

Ahead of the exhibition, the university was tasked with securing the library without compromising the overall aesthetic feel of the building. There were two issues on initial approach; the incurred cost of replacing the windows with reinforced glass, and the works would be disruptive to the front facade of the library.

Security shutters were a logical choice as they could be fitted discretely but maintain security levels. Six **Obexion MD SR4 Shutters** were installed overall. To disguise the mechanics from visitors, the motors and shutter head boxes were enclosed within a fabrication beam - invisible when raised.

OBEXION
SPECIALIST SECURITY SYSTEMS



Obexion MD SR4 shutter; finished in RAL9010 classic white



Equilux built-in lintel shutters; finished in anodised silver matt

OLD MEETS NEW IN THE COTSWOLDS:

A CASE STUDY

equilux
security, style and
peace of mind

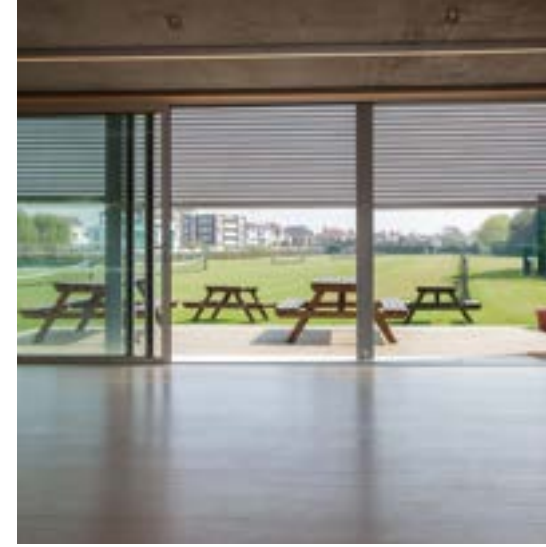
A mix of traditional master craftsmanship combined with the latest building design techniques have been effectively combined in this stunning property in the heart of the Cotswolds countryside. The property, set in its own valley, comprises a period cottage with a contemporary extension built into the hillside.

To maximise the visual opportunities of the surrounding countryside, vast glazed facades have been incorporated into the design, with Equilux security shutters intelligently concealed within the honey-coloured Cotswold stone. When lowered, the anodised shutters' have a subtle matt silver finish which complements the natural choice of building materials.

Equilux security shutters provide security not only when the property is empty, but also during warm nights when the windows are open. As a bespoke solution for this unique property, the shutters are perforated to allow the shutters to remain closed at night whilst allowing natural ventilation from the cooler external air.

In the raised position, the shutter is completely concealed from view, retaining the clean lines of the opening. In the lowered position, the shutter ensures effective resistance against intruder attack. The absence of visible guide rails or boxes limits the potential for effective attack on the system.





AESTHETIC SECURITY INTEGRATION IN AWARD-WINNING PAVILION: CASE STUDY

Set in the picturesque leisure grounds of Canoe Lake Park in Southsea, the Portsmouth Tennis Pavilion has achieved a number of architectural awards. Charter Global were approached early on during inception of the £1.33m project to provide a security solution that would not alter the building's unique flair.

Charter Global worked closely with both architectural firm and contractor to deliver over 16 bespoke lintel security shutters within schedule. The centre itself is a two storey, multi-purpose space including a cafe, dance studio and changing facilities.

With requirements for ventilation and tight margins, each shutter features a bespoke perforated lath. Integr8 Shutters are the only manufacturer on the market able to deliver a shutter system such as this on a project specific basis. The lath profile resulted in small roll zones, meaning the entire curtain can be discreetly tucked away within the structural lintel.

When deployed the security shutters provide a high performance layer of protection against both intruder and vandalism.

INTEGR8
innovative roller shutters



Integr8 structural built-in shutters; 50% perforated; finished in anodised silver



We're highly pleased with the project, especially with how it was managed. The product certainly meets expectations and has worked perfectly.

- Project & Design manager.

High security built in security shutters for a luxury residential refurbishment in Hampstead.

Cracking product! We're extremely happy with the final installation. We even ran into some usability issues but the engineers were back the very next day to help. We've worked with Charter Global on plenty of previous projects and we'd be happy to work with them again.

- Design manager.

Installation of LPS 1175 SR3 rated security shutters to a critical national infrastructure site in the utilities sector.



We had no dealings in the sales process and we're really impressed with the product. Everything has worked perfectly and we're so happy with the overall result. No doubt about working together again!

- Site manager.

High security shutters as part of a 'marauding terror attack' protection scheme for a luxury retails in Knightsbridge.



We're so happy with the project results and especially pleased with the engineers; they were very helpful, polite, and showed they knew the product very well. We're confident we'll be working with Charter Global again on upcoming projects.

- Project manager.

Installation of LPS 1175 SR4 rated security shutters to a critical national infrastructure site in the utilities sector.





ACCREDITATIONS



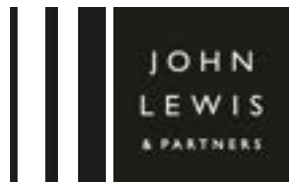
SOME OF OUR CLIENTS

Harrods

GUCCI



L**V**
LOUIS VUITTON



THE
NATIONAL
GALLERY



Foreign &
Commonwealth
Office



HM Revenue
& Customs



Ministry
of Defence



GAGOSIAN GALLERY



CPNI

Centre for the Protection
of National Infrastructure





**Scottish
Water**
Trusted to serve Scotland



**Transport
for London**



London
Stock Exchange



**WESTERN POWER
DISTRIBUTION**

Serving the Midlands, South West and Wales



**UNIVERSITY
OF HULL**

Obexion UD SR2 with louvre and SR1 door; 20% perforated; finished in RAL7016



TOTALCARE

SERVICING & MAINTENANCE

A TOTALCARE maintenance contract ensures maximum performance and lifetime capability for every project. Accommodating of all applications, risk profiles and regulations, TOTALCARE offers various preventative plans committed to maintaining peace of mind that the premises, portfolio or facility will remain protected.



12 months Manufacturer's
Warranty

—
x2 planned visits per annum

—
Basic system service

—
Certificate of Performance on
completion



12 months Manufacturer's
Warranty

—
x2 planned visits per annum

—
x1 additional non-planned visit

—
Basic system service

—
24 Hour response

—
Preferential rates on additional
site attendances

—
Certificate of Performance on
completion



12 months Manufacturer's
Warranty

—
Flexible number of visits per
application agreed contract

—
Full system service including
health check for early
identification

—
Same-day response

—
On call engineer 24/7

—
Preferential rates on additional
repairs

—
Health checks on safety devices

—
Full Maintenance Report with
Certificate of Performance on
completion

