

Flowtop[®] and Flowtop[®] Coloured

A SELF-SMOOTHING TOPPING FOR INDUSTRIAL CONCRETE FLOORS



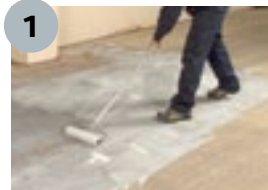
Watco

The UK's leading direct supplier of industrial strength flooring products



Application Process

1



Apply the primer that is included in the pack

2



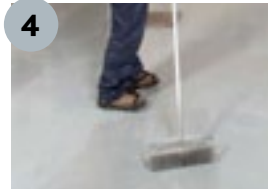
Mix and pour the product onto the primed area

3



Spread with a trowel

4



Remove any air with a spiked roller

Transforms worn and pitted concrete floors

Large areas of uneven, damaged and unsightly floors can be re-surfaced quickly and easily using Watco Flowtop. A smooth, non-dusting surface is achieved which can be overpainted if required.

Extremely durable

Excellent resistance to pallet trucks and general industrial wear and tear.

Easy to use

Pre-blended for easy mixing. Just prime and pour.

Fast application

Much quicker to apply than conventional toppings. Large areas can easily be resurfaced in one day.

Many uses

- Resurface large areas of worn concrete in industrial areas
- Provide a smoother, more easily cleaned surface in garage workshops, showrooms, production areas, warehouses etc.
- Apply to rough, tamped or damaged concrete prior to painting to achieve a first class finish
- Normally applied at only 3mm thick. Thickness can be increased to 15mm to cover very uneven areas
- Suitable for internal and external use

Grey



Tile Red



Buff



Green



Blue



FREE tile samples are available on request

While great care is taken with the colour samples shown, no guarantee can be given that they represent exactly the colours offered

Also available
from Watco

Floor Paints & Coatings

Dustproofers & Sealers

Line Marking

Flooring

Anti Slip Coatings

Anti Slip Products

Floor Repair Materials

Screeds

Preparation Materials

Masonry Repair Materials

Wall Coatings

Exterior Products

Traffic Control

Metal Coatings

Roofing

Watco Flowtop® and Flowtop® Coloured

DESCRIPTION

Watco Flowtop is designed as an industrial grade overlay for rough, damaged or tamped concrete. It cures to a smooth, non-dusting surface that is tough enough to withstand forklift trucks. It is not recommended as a levelling compound for existing very smooth or powerfloated surfaces. Watco Flowtop can be left as a highly practical industrial finish or overpainted (see Overpainting).

STRENGTH

The surface is inherently anti slip in dry conditions. Overcoating with Watco Safety Grip is recommended if positive anti slip is required in very wet or oily areas. Watco Safety Coat is available for large areas where working conditions require a general level of slip resistance.

Watco Flowtop

Tensile Strength	7.8MN/m ²
Flexural Strength	9.7MN/m ²
Compressive Strength	39.7MN/m ²

Concrete

Tensile Strength	3.4MN/m ²
Flexural Strength	6.9MN/m ²
Compressive Strength	29.8MN/m ²

COVERAGE

As a guide, a 25kg pack will cover approximately 3.7m² at 3mm thick, 2.2m² at 5mm thick and 1.1m² at 10mm thick. Flowtop should not generally be applied less than 3mm thick.

STORAGE

Flowtop should be stored for 8 hours prior to use at a temperature range of 15°C-25°C maximum. After long term or higher temperature storage the primers and bottle of resin must be shaken thoroughly. The product must not be allowed to freeze.

SURFACE PREPARATION

Concrete

Concrete should be reasonably clean and free of loose surface material. A good sweep with a stiff broom is usually sufficient. Remove heavy oil and grease contamination using Watco Concroff Super Safe or similar degreaser. It does not matter if the concrete is damp.

Painted and sealed surfaces

Remove as much paint as possible, especially any loose or poorly bonded material. It does not matter if small traces of paint remain, providing they are well bonded. Please refer to Watco Customer Services Department for further advice.

Priming

Two primers are supplied. Dampen areas of bare concrete with clean cold water and leave for 20-30 minutes. Apply Primer 1 to the prepared surface using a brush or soft broom and allow it to soak into the concrete for at least 15-20 minutes. Primer 1 can be left overnight to dry if time permits. Primer 2 can be applied whilst Primer 1 is still tacky or if Primer 1 has completely dried. Apply the primers reasonably evenly to avoid ponding on the surface.

We supply sufficient Primer 2 to allow for very absorbent surfaces, and application to less absorbent surfaces will require less than we supply. Apply only as much as is required to provide a thin, reasonably even film without ponding. If excess Primer 2 is used it can bleed through the wet Flowtop and dry on the surface. Although any dried primer will wear off as the floor is put into use, it can lead to problems if the Flowtop is going to be painted and discolouration of the finished Flowtop Coloured.

MIXING (immediately after Primer 2 has been applied)

We recommend that the complete pack of powder and resin are used rather than splitting them for separate mixes. Empty the large bottle of resin into the bucket and gradually add the powders ensuring complete dispersion, stirring and blending using a slow speed drill fitted with a mixing blade (available from Watco). If applying Flowtop Coloured add, and thoroughly mix, the coloured powder at this point. Continue mixing for approximately 3-5 minutes until an even colour and creamy consistency is obtained. The mixed components should be used immediately.

APPLICATION

Pour the mixed components on to the wet Primer 2. Using a rectangular trowel spread the mixed components across the

surface of the concrete at the desired thickness. It may be convenient to work to a thin batten for depth and edge control but this must be removed before further sections are treated. It is not essential that trowel marks are removed at this stage. Immediately after application a spiked roller should be used to improve the finish and release any trapped air. Work the spiked roller uniformly across the surface rolling each area 3 or 4 times from different directions. The spiked roller should not be used more than 20 minutes after the product has been applied (less in warm or very dry conditions) as it will then start to cure and the roller marks will not disappear. Care should be taken not to tread wet primer or the mixed components onto surrounding surfaces. External applications in direct sunlight can lead to hairline crazing. In exceptional temperature conditions advice should be obtained from Watco's Technical Department.

CURING TIME

Foot and light traffic may be allowed after approximately 6 hours. Watco Flowtop will be ready for full use after 24-36 hours when laid at normal depths (i.e. 3-5mm). These guidelines assume an ambient temperature of approximately 15°C-20°C and good ventilation. Lower temperatures will retard curing. Do not apply at less than 5°C or above 30°C. Temperatures over 25°C can make the material sticky to apply and lead to rapid drying out causing surface crazing, especially in direct sunlight.

OVERPAINTING

Watco Flowtop does not need to be overpainted and can be left as a practical, non-dusting surface. In common with cementitious products, the shade of colour may vary due to the nature of cement and site conditions. Where appearance is important Watco epoxy resin coatings may be used to coat the surface. Solvent free products may be used after 24-36 hours, solvent based products after 7 days. Avoid paints which contain strong solvents, such as xylene. If using a solvent based paint other than a Watco product we recommend a trial area first.

Watco Epoxy Gloss Coat provides an excellent hard wearing, attractive surface. Watco Safety Coat or Safety Grip are solvent free anti slip coatings which promote a safer working environment. Watco Chemi-Coat (solvent free) is ideal where a high degree of chemical resistance is required. We do not recommend application of Watco Concrete Floor Paint or any paint that may be affected by the residual alkalinity of the recently applied Watco Flowtop.

IMPORTANT

Do not apply to surfaces where sugars or sugar solutions have been stored or allowed to contaminate the surface.

SHELF LIFE

12 months in manufacturer's unopened containers.

SAFETY

Material Safety Data Sheets are available. Food products must be removed from the area during application and cure.

CLEANING EQUIPMENT

Water may be used before the product starts to cure.

GENERAL MAINTENANCE

When fully cured, Watco Flowtop can be cleaned with detergents or degreasers. Do not subject to temperatures in excess of 60°C.

ORDERING

Available direct from Watco UK Limited in the UK and through agents worldwide. All Watco products are sold subject to the Company's Standard Conditions of Sale.

The Company and its representatives are often asked to comment on potential uses of Watco products which differ from those described in the Company's data sheets. Whilst in such cases the Company and its representatives will always try to offer helpful and constructive advice, the Company cannot be held responsible for the results of such uses unless they are specifically confirmed in writing by Watco.

APPLICATORS

Mixing Blade for use with an electric drill

Spiked Roller



Watco UK Limited

Watco House, Filmer Grove,
Godalming, Surrey GU7 3AL, UK
Tel: 01483 418 418
Fax: 01483 42 8888
www.watco.co.uk
E-mail: sales@watco.co.uk

© Watco UK Ltd January 2016

watco®

Quality Certified

ISO 9001
BUREAU VERITAS
Certification



Designed, manufactured and
supplied under an ISO 9001
quality management system