

# How the best just got better



Bringing superior quality concrete floor paints to our customers has always been at the heart of everything we do. But it wasn't enough. We wanted to offer you the best. We were already using the toughest polyurethane resins and best pigments in our formulation, so we had to look beyond. After extensive testing and trials, our paint chemists blended ceramic and 'diamond hard' wax with resin to create the best single pack concrete floor paint on the market.

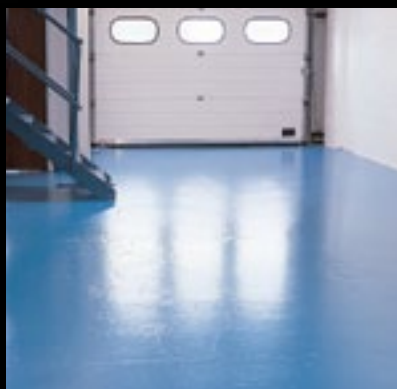
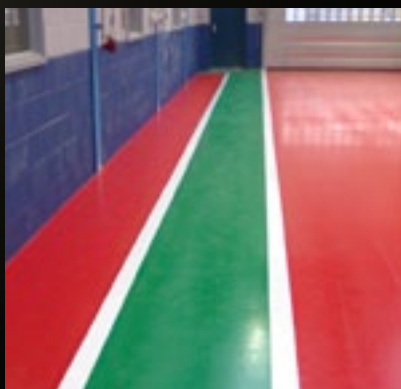
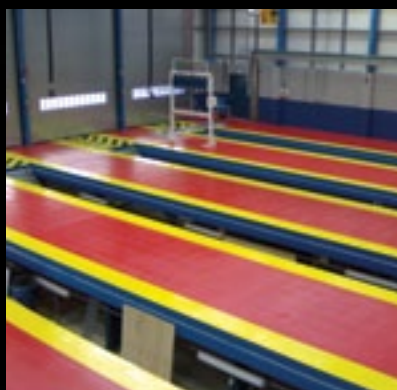
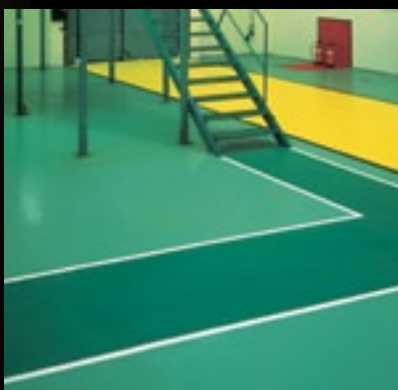
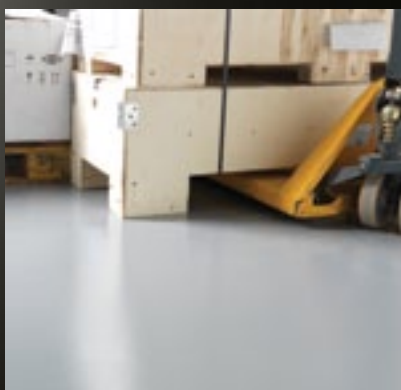
# CONCRETE FLOOR PAINT | BEST EVER FORMULA

## WHAT MAKES IT THE BEST?

Our new formulation delivers levels of durability, adhesion and scratch resistance never seen before. Our Concrete Floor Paint formulas are now twice as abrasion resistant than before, as well as 400% harder, and more scratch resistant, than a leading competitor and have 50% better adhesion. That means they'll last longer, leaving more time between repainting.

## WHY IS THE BEST, BEST FOR YOU?

Because our new formula will last twice as long, you'll save on maintenance costs and repainting over the long term. Not only does it adhere to floors, it stays stuck and superior scratch resistance keeps them looking better for longer. With Watco Concrete Floor Paint protecting your floors, you can focus on your next project without worrying about the last.



## OUR GUARANTEE TO YOU

We're so confident that we've created the best quality concrete floor paints for you, they're 100% guaranteed. If you experience any problems or you're not entirely happy, just call us on **01483 418 418**.

## WHAT ABOUT COLOUR?

Our customers have come to expect a wide choice of colours, and will now enjoy an even broader range in our anti slip and matt concrete floor paints. Along with our new formulation, we've also modified a few of our colours and will be happy to help you find the one you're looking for. In addition we've also tested all shades to make sure they fall within RAL guidelines where a RAL number is quoted. See next page for more information.

# Transform your premises with Watco Concrete Floor Paint Best Ever Formula



Concrete Floor Paint



Before



After

Watco Concrete Floor Paint is available in a range of finishes:

Mid Gloss Matt Anti Slip	<b>Light Grey</b> RAL No. 7038
Mid Gloss Matt Anti Slip	<b>Mid Grey</b> RAL No. 7037
Mid Gloss Matt Anti Slip	<b>Dark Grey</b> RAL No. 7015
Mid Gloss	<b>Stone</b> RAL No. 7032
Mid Gloss Matt Anti Slip	<b>Mid Blue</b> RAL No. 5015
Mid Gloss Matt Anti Slip	<b>Blue Grey</b> RAL No. 7000
Mid Gloss	<b>Mid Green</b> RAL No. 6002
Mid Gloss	<b>White</b> RAL No. 9010
Mid Gloss Matt Anti Slip	<b>Tile Red</b>
Mid Gloss Matt Anti Slip	<b>Sandstone</b> RAL No. 1014
Mid Gloss Anti Slip	<b>Hazard Yellow</b> RAL No. 1018
Mid Gloss Anti Slip	<b>Signal Red</b> RAL No. 3020
Mid Gloss Anti Slip	<b>Signal Green</b> RAL No. 6032



## Watco Concrete Floor Paint

Brighten and dustproof dull, drab concrete with our toughest ever Mid-Gloss single pack floor paint. Our unique formula based on a blend of ceramic and polyurethane resins will transform your concrete floor into a dustproof, oil resistant and easy clean surface. Tested to CE Mark EN1504-2, Watco Concrete Floor Paint demonstrates superior impact, wear and scratch resistance, hardness, adhesion and durability.

- **Coverage** Approx. 40m<sup>2</sup> per 5L per coat. Two coats are recommended
- **Likes most surfaces** Concrete, wood, metal, painted or unpainted
- **Many uses** Ideal for warehouses, production areas, workshops and general use areas
- **New formula** Now lasts twice as long
- **Attractive** Mid Gloss finish
- **Easy to apply** Use a medium pile roller
- **New Colour Range** Now to RAL reference

► 5L • £70.90



**100%  
HARDER  
WEARING**  
THAN OUR PREVIOUS  
FORMULA

## Watco Matt Concrete Floor Paint

Improves the appearance of worn or pitted concrete. Our Matt Concrete Floor Paint has all the benefits of the Mid Gloss version in an attractive Matt finish.

- **Conseals and protects** Ideal for disguising minor imperfections in concrete surfaces and sealing dirt marks and stains

► 5L • £70.90

## Watco Anti Slip Concrete Floor Paint

Added texture for better, safer grip. With all the features of the standard Watco Concrete Floor Paint, our Anti Slip version includes an additional anti slip aggregate to give the surface better adhesion and increased grip to help prevent workplace accidents, even in wet or oily conditions.

This evenly textured, easily cleanable coating can be applied to concrete, metal or wood and is available in 7 colours.

- **Better texture** Includes a fine aggregate that disperses as paint is applied by roller, making the surface easier to maintain with a more uniform texture than other solutions

► 5L • £76.40

## Preparation - we recommend...

Watco Etch & Clean	Watco Bio D
New or bare concrete Page 44	Dirty, oily painted surfaces Page 44
Watco Concroff	Watco Powerfloat Primer
Greasy, oily bare concrete Page 44	Powerfloated, very smooth surfaces Page 45

## Tests and Standards Compliance

Finish	Result/Rating						
Mid Gloss	 ADHESION EN 1542 3.2 MPa (3.2 N/mm <sup>2</sup> )	 ABRASION RESISTANCE ISO 5470-1 127mg	 IMPACT RESISTANCE ISO 6272 CLASS 3	 SCRATCH RESISTANCE ISO 45862 7N	 FLEX ISO 1519 2mm	 EN 1504-2 CE	 GLOSS VALUE 92
Matt	 ADHESION EN 1542 3.2 MPa (3.2 N/mm <sup>2</sup> )	 ABRASION RESISTANCE ISO 5470-1 127mg	 IMPACT RESISTANCE ISO 6272 CLASS 3	 SCRATCH RESISTANCE ISO 45862 7N	 FLEX ISO 1519 2mm	 EN 1504-2 CE	 GLOSS VALUE 4
Anti slip	 ADHESION EN 1542 3.2 MPa (3.2 N/mm <sup>2</sup> )	 ABRASION RESISTANCE ISO 5470-1 127mg	 IMPACT RESISTANCE ISO 6272 CLASS 3	 SCRATCH RESISTANCE ISO 45862 7N	 FLEX ISO 1519 2mm	 EN 1504-2 CE	 SLIP RESISTANCE BS7976-2 67 PTV (Dry) 60 PTV (Wet)

Refer to page 98 for more information on our Tests and Standards Compliance

## You may also need...

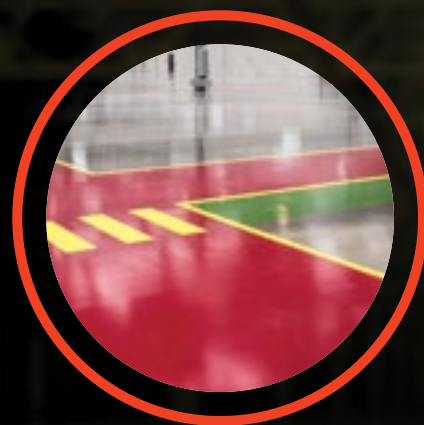
Tools	Each
5" Paint Brush	£7.10
Medium Pile 12" Roller Frame & Handle	£33.50
Medium Pile Replacement Roller	£7.30
Plastic Scuttle	£6.70
Watco Painting Kit	£54.00
Kit comprises: 12" medium pile roller, frame & telescopic handle; replacement roller; plastic scuttle; 5" & 2" paint brushes;	

**40%**  
HARDER WEARING  
THAN BEFORE

## Better performance - guaranteed

### Our unique new formula

At Watco, we've been working tirelessly to develop an epoxy gloss coat floor paint to exceed your expectations. Our paint chemists created a unique new formulation based on two pack epoxy resin blended with ceramic and 'diamond hard' wax. We then put it through rigorous testing to ISO standards to make sure we were bringing you the best.



#### WHAT MAKES IT THE BEST?

Our new formula, with a blend of superior resins including 'diamond hard' wax and ceramic additive, brings you a paint that's 40% harder wearing than our previous formulation and 3 times harder than a leading competitor's. That means it lasts longer, delivering the value for money for you've come to expect from Watco. Our paint is also 20% glossier than a leading competitor's, leaving an attractive finish that lasts year after year.

**50%**  
BETTER ADHESION  
THAN BEFORE

#### OUR GUARANTEE TO YOU

We're so confident that we've created the best quality concrete floor paints for you, they're 100% guaranteed. If you experience any problems or you're not entirely happy, just call us on 01483 418 418.

OVER  
**20%**  
GLOSSIER  
THAN A LEADING  
COMPETITOR  
PRODUCT

## HOW DO I KNOW IT'S TOUGH?

To make some of the toughest paint, we put it through its paces during testing. That's why all grades carry CE Mark EN1504-2. The test results showed superior abrasion, scratch and impact resistance and impressive adhesion, hardness and flexibility. It's everything you need to coat and protect floors for the future.

## DRIES FASTER

Our new formula is not only tough, it dries faster than before. So fast, in fact, that you can apply two coats in just one day. You can save on time and costs with greatly reduced downtime when repainting your floor. It's now even quicker to get that attractive, low maintenance, hard-wearing floor finish you're looking for.

# 2X

HARDER WEARING  
THAN LEADING  
COMPETITOR

BEST EVER FORMULA

## Epoxy Gloss Coat

AN EXTREMELY TOUGH  
EPOXY RESIN FLOOR COATING

LA MEILLEURE FORMULE

## Laque'sol Époxy

PEINTURE DE SOL EXTRÊMEMENT  
RÉSISTANTE

UNSERE BESTE FORMEL

## Epoxyguard Lösemittelfrei

SEHR STARK BELASTBARE  
EPOXIDHARZ-BODENBESCHICHTUNG

BESTE FORMULE COIT

## Epoxy Gloss Coat

EXTREEM DUURZAME EPOXYHARSCOATING  
VOOR DE VLOER

# 5L

## CALL FOR A FREE SAMPLE

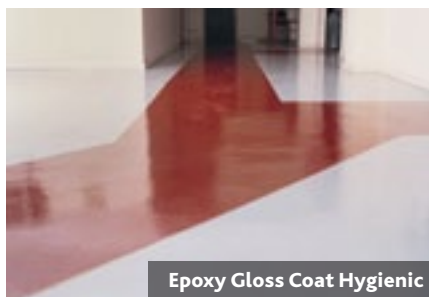
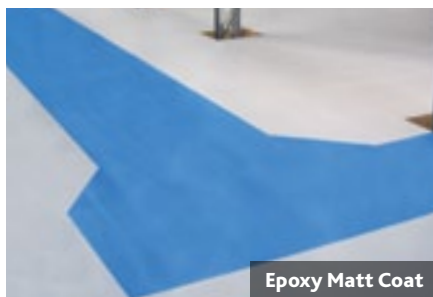
## MATT AND HYGIENIC FINISHES

Our new formulation also comes in a matt finish to reduce glare and cover up minor imperfections in concrete floors. In addition, we also offer hygienic grade paint with silver ion technology for areas where cleanliness and hygiene are as important as a hard-wearing finish.



# Epoxy Gloss Coat Best Ever Formula is now even more durable, more scratch resistant and has greater bonding power

The Watco Epoxy Gloss Coat range is the first choice for workshops, showrooms and heavy traffic areas. For anti slip versions of these products, please see the Watco Safety Coat range on page 50.



Watco Epoxy Gloss & Matt Coats are available in a range of finishes:

Gloss Matt Hygienic	<b>Light Grey</b> RAL No. 7035
Gloss Matt Hygienic	<b>Mid Grey</b> RAL No. 7036
Gloss Matt Hygienic	<b>Dark Grey</b> RAL No. 7005
Gloss Matt Hygienic	<b>Black</b> RAL No. 9005
Gloss Matt Hygienic	<b>Mid Blue</b> RAL No. 5015
Gloss Matt Hygienic	<b>Dark Blue</b> RAL No. 5005
Gloss Matt Hygienic	<b>Deep Red</b> RAL No. 3003
Gloss Matt Hygienic	<b>Signal Red</b> RAL No. 3020
Gloss Matt Hygienic	<b>Hazard Yellow</b> RAL No. 1021
Gloss Matt Hygienic	<b>White</b> RAL No. 9010
Gloss Matt Hygienic	<b>Mid Green</b> RAL No. 6002
Gloss Matt Hygienic	<b>Tile Red</b>
Gloss Matt Hygienic	<b>Sandstone</b> RAL No. 1014
Gloss Matt Hygienic	<b>Blue Grey</b> RAL No. 7000
Gloss Matt Hygienic	<b>Stone</b> RAL No. 7032

## Watco Epoxy Gloss Coat

**Highly durable, attractive gloss finish.** Ideal for environments where a tough, easy clean surface is required.

The new, reinforced epoxy resin formulation also dries in half the time, so you can apply two coats in one day and get the floor back into use faster.

The attractive new colour range is now produced to RAL classic colours.

- **Coverage** Approx **30m<sup>2</sup>** per 5 litres per coat. Two coats usually required
- **Strong barrier** Resistant to oil, solvents, and harsh cleaning chemicals. Designed for factories, warehouses, workshops and showrooms
- **Fast results** Cures in only 3 hours at 15°C-20°C so you can apply 2 coats in a single day. Ready to take light traffic in 12 hours and heavy traffic in 24 hours
- **Trouble free** Easy to mix, equipment can be cleaned in water. Watco Epoxy Gloss Coat goes over existing coatings, concrete, sand and cement, and wood. Also suitable for concrete with underfloor heating
- **Concrete option**  
Use **Watco Powerfloat Primer** for application over powerfloated floors

► 5L • £128.90



**40%**

HARDER WEARING  
THAN BEFORE

## Watco Epoxy Matt Coat

**Protects, while hiding imperfections.** Ideal if you want the features of Epoxy Gloss Coat – but with a matt finish.

- **Coverage** Approx **30m<sup>2</sup>** per 5 litres per coat
- **Hide and disguise** Ideal for older, scratched or pitted floors, or where a low glare, smart matt finish is required

► 5L • £128.90

## Watco Epoxy Gloss Coat Hygienic

**Ultimate paint for hygiene and safety. Well-suited to catering and hospital use.** Epoxy Gloss Coat Hygienic guarantees safe, odourless, non-flammable surfaces. With just two coats, it also brings the benefits of our standard Epoxy Gloss Coat.

- **Coverage** Approx **30m<sup>2</sup>** per 5 litres per coat
- **Food friendly** Great for food storage and preparation areas, canteens, and medical rooms
- **Good under pressure** Withstands everyday heavy use, solvents and cleaning chemicals

► 5L • £145.10

## Watco Epoxy Matt Coat Hygienic

**Like Epoxy Gloss Coat Hygienic.** All the benefits plus the addition of silver ion technology.

- **Coverage** Approx **30m<sup>2</sup>** per 5 litres per coat

► 5L • £145.10

## Preparation - we recommend...

Watco Etch & Clean	Watco Bio D
New or bare concrete Page 44	Dirty, oily painted surfaces Page 44
Watco Concroff	Watco Powerfloat Primer
Greasy, oily bare concrete Page 44	Powerfloated, very smooth surfaces Page 45

## Tests and Standards Compliance

Finish	Result/Rating					
Gloss	 ADHESION EN 1542 4.1 MPa (4.1 N/mm²)	 ABRASION RESISTANCE ISO 5470-1 57mg	 IMPACT RESISTANCE ISO 6272 CLASS 3	 SCRATCH RESISTANCE ISO 45862 7N	 FLEX ISO 1519 2mm	 FOOD TAIN EN 1773 ✓
	 ADHESION EN 1542 4.1 MPa (4.1 N/mm²)	 ABRASION RESISTANCE ISO 5470-1 57mg	 IMPACT RESISTANCE ISO 6272 CLASS 3	 SCRATCH RESISTANCE ISO 45862 7N	 FLEX ISO 1519 2mm	 EN 1504-2 CE
Matt	 ADHESION EN 1542 4.1 MPa (4.1 N/mm²)	 ABRASION RESISTANCE ISO 5470-1 57mg	 IMPACT RESISTANCE ISO 6272 CLASS 3	 SCRATCH RESISTANCE ISO 45862 7N	 FLEX ISO 1519 2mm	 EN 1504-2 CE
	 ADHESION EN 1542 4.1 MPa (4.1 N/mm²)	 ABRASION RESISTANCE ISO 5470-1 57mg	 IMPACT RESISTANCE ISO 6272 CLASS 3	 SCRATCH RESISTANCE ISO 45862 7N	 FLEX ISO 1519 2mm	 EN 1504-2 CE

Refer to page 98 for more information on our Tests and Standards Compliance

## You may also need...

Tools	Each
5" Paint Brush	£7.10
Medium Pile 12" Roller Frame & Handle	£33.50
Medium Pile Replacement Roller	£7.30
Plastic Scuttle	£6.70
Watco Painting Kit	£54.00
Kit comprises: 12" medium pile roller, frame & telescopic handle; replacement roller; plastic scuttle; 5" & 2" paint brushes;	



# Epoxicote™ Industrial strength flooring in just one coat



**TOUGH  
& EASY**

Epoxicote is super tough and easy to use

Epoxicote™ High Build

## Watco Epoxicote™ High Build

**Enhanced formula delivers an ultra hard-wearing chemical resistant gloss floor coating.** Our popular range of heavy-duty floor paint, designed for really tough environments, has been through a major update.

Watco has pushed coating technology to the limit to develop a highly advanced formulation that puts Epoxicote High Build into a class of its own.

Epoxicote High Build is a virtually solvent free floor coating that guarantees excellent wear, an easy-to-clean surface and ultimate protection for your floor.

Available in 9 colours.

- **Coverage** Approx **18m<sup>2</sup>** with one thick coat per 4 litre pack
- **Super tough finish** For production areas, warehouses, garages and wherever there's a risk of chemical or oil spills including Skydrol
- **Covers all surfaces** Sticks fast to concrete, brick, metal and wood

- **Quick to cure** Light traffic after 12 hours
- **Easy application** Use a roller, ideally at around 15°C, one coat's usually enough
- **Minimal prep** Goes directly onto most surfaces but for porous surfaces, use **Watco 4-Hour Epoxy Primer** or **Watco Powerfloat Primer** on powerfloated concrete

► **4L • £153.40**

## Watco Epoxicote™ High Build Rapid

**When time's important, use our quick drying version.** Epoxicote High Build Rapid uses a unique formulation that cuts curing time to a minimum.

Yet it's still easy to use and provides a rock-hard floor surface.

- **Back in action quickly** High Build Rapid is ready for light traffic in 4 to 6 hours

► 4L • £168.50

## Watco Epoxicote™ High Build Anti Slip Rapid

**All the safety benefits of High Build Anti Slip but the curing time is cut by 50%.** The ideal answer for high demand areas that can't be out of action for long.

- **Quick turnaround** Rapid curing gets floors back into action in 4 to 6 hours

► 4L • £173.60

	Light Grey
	Mid Grey
	Dark Grey
	Black
	Mid Blue
	Mid Green
	Tile Red
	Stone
	Safety yellow

### You may also need...

Tools	Each
Roller/Frame and Handle	£33.50
Replacement Roller	£7.30
Plastic Scuttle	£6.70

## Watco Epoxicote™ High Build Anti Slip

**Reduce accidents in wet and oily areas.**

All the distinctive characteristics of the standard version plus the added advantage of excellent slip resistance.

Perfect for painting difficult areas where you need to reduce the risk of accidents.

- **Tackles wet and oily hazards** Non-slip formulation makes it ideal for loading bays or areas around machinery
- **Reduces accident risk** Integral aggregate makes the gloss surface highly non-slip to improve safety

► 4L • £158.50

## Watco Epoxicote™ High Build Cold Cure

**Guaranteed hard wearing coating at 0°C.** High Build Cold Cure is formulated to bring a tough approach to floors and surfaces even when it's freezing.

- **Thrives in the cold** Cures to form the unique High Build surface that's ready to take light traffic after 48 hours even at 0°C

► 4L • £168.50

## Watco Epoxicote™ High Build Cold Cure Anti Slip

**Makes floors safer, even at freezing point.** Epoxicote High Build Cold Cure Anti Slip shares the same exceptional properties as Cold Cure but with the added benefit of a high degree of anti-slip.

- **Reduces accidents** Aggregate improves safety on wet, freezing floors

► 4L • £173.60

## Watco Epoxicote™ High Build Advanced

**Our strongest and most resilient coating ever.** We took the already incredible Epoxicote High Build formulation and boosted it with even more useful features to cope with areas of extremely heavy traffic and the most challenging environments.

It costs a bit more, but Advanced provides a surface hardness like no other, thanks to the ceramic additive, which also offers excellent resistance to abrasion and improved stain protection.

What's more, it is easy to apply with a roller, building up a tough resistant surface up to 200 microns thick with just a single coat.

- **Eco and user friendly** Low solvent content, virtually odourless when applied
- **Perfect under pressure** 100% solids epoxy formula makes it long lasting even with the heaviest of traffic
- **Easy to clean** High gloss makes it hygienic and easy to keep clean, even with chemical or oil spills
- **Looks good** Great for areas that get plenty of traffic – showrooms, warehouses etc

► 4L • £182.60

## Watco Epoxicote™ High Build Advanced Anti Slip

**Hard wearing and non-slip makes for safe, tough floors.** Delivers all that High Build Advanced offers but with a non-slip surface too, thanks to the integral aggregate.

- **Health and safety at work** Anti-slip aggregate reduces workplace accidents
- **Even better** Aggregate is suspended within the coating to give uniform anti-slip properties across the entire surface

► 4L • £187.70

### Preparation - we recommend...

Watco Etch & Clean	Watco Bio D
New or bare concrete Page 44	Dirty, oily painted surfaces Page 44
Watco 4-Hr Epoxy Primer	Watco Powerfloat Primer
Porous, open textured surfaces Page 45	Powerfloated, very smooth surfaces Page 45

# Resiflow Ultra-durable self-levelling floor system. When you need more than a floor coating



## Resiflow – How it's applied



Pour the mixed product on to the substrate



Spread with the Resiflow Applicator



Finish with a spiked roller to prevent air bubbles



## Watco Resiflow Supergloss

**Our glossiest floor screed.** Watco Resiflow Supergloss is our top-of-the-range floor finish. Just mix, pour and spread and you'll have a showroom-standard floor that will perform perfectly for years and years.

This 1 to 2mm thick self-levelling epoxy resin offers the ultimate floor covering for durability and appearance.

- **Coverage** Approx **10m<sup>2</sup>** at 1mm, **5m<sup>2</sup>** at 2mm per 20kg unit
- **Tough surface** 100% solids epoxy resin can cope with extremely heavy footfall
- **Attractive** A glossy finish that is ideally suited for showrooms, production areas, shops and where a smart, easy maintenance floor is important
- **Easy to apply and clean** No fuss, no mess

► 20kg • £137.70

## Watco Resiflow Chemical Grade

**For greater protection from spills.**

Ultra-resistant flooring offers total confidence for where strong chemicals are stored or there is a risk of spills.

While Resiflow Supergloss has good general chemical resistance, this ultra-resistant version is designed for areas where strong chemical spills are an issue.

- **Coverage** Approx **10m<sup>2</sup>** at 1mm, **5m<sup>2</sup>** at 2mm per 20kg unit
- **Acid test** Shrugs off 10% nitric, sulphuric and hydrochloric acids and much more
- **Level best** Use the **Resiflow Applicator** (see Tools) to produce a self levelling, hard wearing surface
- **Preparation** Porous surfaces should be primed with **Watco 4-Hour Epoxy Primer**

► 20kg • £137.70

## Watco Resiflow Anti Slip

**Peace of mind in potentially slippery areas of flooring.** This low sheen finish, anti-slip Resiflow version is ideal for heavy-use locations that may be prone to spillages.

It's thick, low sheen finish covers floor imperfections while providing a safer, slip-resistant finish. One coat is enough for most surfaces.

- **Coverage** Approx 5 to **10m<sup>2</sup>** per 20kg

► 20kg • £112.70

## Watco Resiflow Flex

**Flexible, tough and glossy flooring for a first-class finish every time.**

Resiflow Flex's polyurethane-based formulation offers increased flexibility while providing the same high-gloss and chemical resistance properties of Resiflow Supergloss.

The highly flexible finish resists cracking in difficult areas, such as mezzanines around vibrating machinery, or in areas subject to movement or impact. It can be applied to concrete as well as old (at least six months) asphalt.

- **Coverage** **7m<sup>2</sup>** at 1mm, **3.5m<sup>2</sup>** at 2mm, **1.75m<sup>2</sup>** at 4mm, **1.17m<sup>2</sup>** at 6mm
- **Extra tough** Can cope with heavily used areas such as those around machinery without cracking
- **Extra resistant** Able to withstand diesel, motor oil, coolant and other common chemicals
- **Fast drying** Touch dry in only 5 hours at 15°C to 20°C. Full resistance achieved in just 7 days

► 13kg • £142.80

**MADE BY  
US FOR YOU**

We have been certified for ISO9001 'Design, manufacture and supply' since 1993, acknowledging our on-going commitment to high standards of quality and service.

### You may also need...

Tools	Each
Resiflow Applicator	£45.00
Replacement Blade	£9.50
Spiked Roller	£17.30
10" Steel Float	£6.60

### Preparation - we recommend...

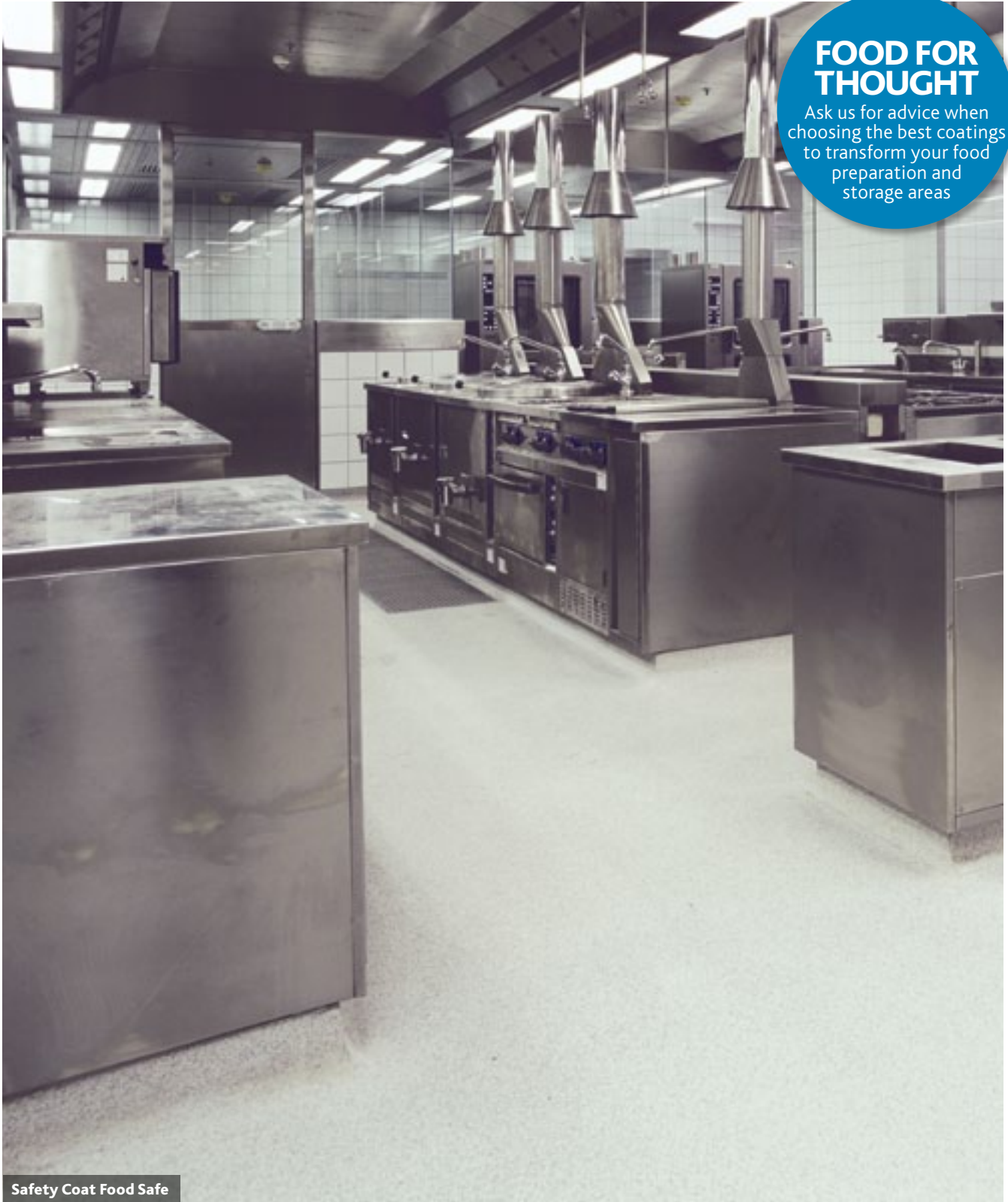
<b>Watco Etch &amp; Clean</b> New or bare concrete <b>Page 44</b>	<b>Watco Bio D</b> Dirty, oily painted surfaces <b>Page 44</b>
<b>Watco 4-Hr Epoxy Primer</b> Porous, open textured surfaces <b>Page 45</b>	<b>Watco Powerfloat Primer</b> Powerfloated, very smooth surfaces <b>Page 45</b>

Supergloss Chemical Grade	Light Grey
Supergloss/Anti Slip Chemical Grade Flex	Mid Grey
Supergloss Chemical Grade Flex	Mid Blue
Supergloss Chemical Grade Flex	Tile Red

# Safety Coat Food Safe Formulated to improve safety in a busy work areas

## FOOD FOR THOUGHT

Ask us for advice when choosing the best coatings to transform your food preparation and storage areas



Safety Coat Food Safe

## Watco Food Safe Coating

**Specialist coating designed to meet food industry rigours.** This gloss floor paint is formulated to meet the requirements of EN17/3 as a non-toxic product.

Food Safe Coating also has a food taint test certificate. This floor paint is suitable for coating concrete or sand and cement floors and will take light traffic in 6 to 8 hours, and be back into full action within 12 hours.

We recommend two coats to get the maximum advantages from the paint and it can be applied to interior and exterior floors at any temperature between -10°C and 30°C.

- **Coverage** Approx **25m<sup>2</sup>** per 2.5 litres
- **Easy to clean** Strong surface stands up to steam cleaning
- **Designed for food** Qualifies for a food- taint certificate

► **2.5L • £112.00**

Food Safe Coating Safety Coat Food Safe Cold Set Coating Safety Coat Cold Cure	Light Grey
Food Safe Coating Safety Coat Food Safe Cold Set Coating Safety Coat Cold Cure Flexicoat	Mid Grey
Food Safe Coating Safety Coat Food Safe Cold Set Coating Safety Coat Cold Cure Flexicoat	Mid Blue
Food Safe Coating Safety Coat Food Safe Cold Set Coating Safety Coat Cold Cure Flexicoat	Tile Red
Safety Coat Food Safe Safety Coat Cold Cure	White
Safety Coat Food Safe Safety Coat Cold Cure	Black
Food Safe Coating Safety Coat Food Safe Cold Set Coating Safety Coat Cold Cure	Mid Green
Safety Coat Food Safe Safety Coat Cold Cure	Safety Yellow

## Watco Safety Coat Food Safe

**Anti-slip paint for all food storage areas.** Having the same characteristics as the Food Safe Coating, our non-slip, strong, resistant, two-part resin floor coating is also designed to meet the rigorous standards of the food industry by meeting the requirements of the strict standard, EN71/3.

With its non-slip properties to help safety in the workplace, our food industry coating is formulated to stand up to the rigours of a busy work area while demonstrating excellent resistance to chemicals.

It can be applied at almost any temperature – between -10°C and 30°C to concrete and sand and cement floors

- **Coverage** Approx **25m<sup>2</sup>** per 2.5 litres
- **Helps with worker safety** Non slip surface even in wet or slippery areas
- **Back in a day** Takes heavy traffic in just 12 hours

► **2.5L • £117.30**

## Watco Cold Set Coating

**New formula delivers top performance even at low temperatures.** Unlike conventional floor paints, Cold Set Coating will cure during the winter, making it ideal for refurbishment and maintenance of unheated areas.

Ultra hard-wearing, it will withstand heavy wear and chemical attacks.

- **Coverage** Approx **25m<sup>2</sup>** per coat per 2.5 litres, less for textured or porous surfaces, and if used below 0°C
- **All weather** Exceptional UV resistance for exterior and interior applications. Suitable for walk-in fridges and freezers, cold stores and loading bays. Works on concrete, sand and cement, and previously painted surfaces
- **Cold capable** Ready for foot traffic in 18 hours at 5°C, 24 hours at 0°C

► **2.5L • £112.00**

## You may also need...

Tools	Each
Microfibre Roller Frame and Handle	£33.50
Plastic Scuttle	£9.50

## Watco Safety Coat Cold Cure

**Takes freezing conditions in its stride.**

The ideal flooring solution for when temperatures are extreme.

Fridges, freezers, cold stores and loading bays suffer the worst the elements can throw at them so it's vital your flooring can cope.

- **Coverage** Approx **25m<sup>2</sup>** per coat per 2.5 litre unit onto a non-porous surface, or **10-15m<sup>2</sup>** onto a porous or textured surface. Coverage will be reduced if applying at temperatures below 0°C
- **Loves low temperatures** Good for outdoor spaces too, can be applied in conditions as low as -10°C
- **No fade** Excellent UV resistance

► **2.5L • £116.00**

## Watco Flexicoat™

**Flexible protection for heavy-wear areas – ideal for mezzanine floors, for example.** Our two-pack polyurethane Flexicoat™ is a tough, ultra flexible solution that both seals and waterproofs floors, while filling smaller cracks to cut down on preparation time.

- **Coverage** Approx **20m<sup>2</sup>** per 5 litres per coat. One coat usually sufficient
- **No more cracks** Resists the movement of vibrating machinery or flexible mezzanine floors
- **Ultra tough** Usable on interiors and exteriors at risk from leaks, including plant and boiler rooms. Suitable for concrete and asphalt. Asphalt must be 6 months old. Also resistant to diesel, motor oil, coolant, and other commonly used chemicals
- **Easy care** Can be steam cleaned
- **Covers quickly** Usually requires only one coat. Flexicoat cures in 12 hours at 15°C to 20°C

► **5L • £154.50**



# Chemi-Coat® Tough one-coat, heavy duty, chemical resistant coating for floors and walls



**TOO TOUGH  
TO FAIL**

No quibble money  
back guarantee if  
Chemi-Coat doesn't  
work for you

Chemi-Coat

## Chemi-Coat® Resistance

### Chemi-Coat® Chemi-Coat® Rapid Chemi-Coat® Cold Cure

#### Resistant to:

Petrol, 25% Lactic Acid, Diesel, 10% Hydrochloric Acid, Xylene, 10% Nitric Acid, Salt, 25% Sulphuric Acid, White Spirit, 20% Phosphoric Acid, Bleach, 10% Citric Acid, 20% Ammonia, 20% Caustic Soda, Anti Freeze, Sugar Solutions, Mineral Oil, 10% Oxalic Acid, Detergents, 5% Acetic Acid, Methylated Spirits, Skydrol (0-1)

### Chemi-Coat® Acid Strength

#### Rating Key (at 25°C):

0 = No Effect; 1 = Stains/Dulls;

2 = Blisters; 3 = Lifts Film

Acetic Acid 98% (0-1), Ammonia 28% (0), Brake Fluid (0), Calcium Chloride 10% (0), Diesel (0), Formic Acid 38% (1), Petrol (0), Hydrochloric Acid 37% (0), Hydrofluoric Acid 48% (0-1), Nitric Acid 30% (1), Phosphoric Acid 25% (1), Sulphuric Acid 98% (0-1), Xylene (0), Skydrol (0-1)

### Chemi-Coat® Anti Slip

Petrol, Diesel, 10% Hydrochloric Acid, Xylene, 10% Nitric Acid, 25% Sulphuric Acid, 20% Phosphoric Acid, 20% Caustic Soda, 5% Acetic Acid

## Watco Chemi-Coat®

**New high performance formula for chemical resistant gloss coating.** Our chemical resistant epoxy resin paint, designed to withstand chemical spills, is now even tougher thanks to Watco's new technology formulation.

Using just a single coat, Watco Chemi-Coat's advanced formula delivers a durable and ultra resistant surface that you can rely on.

Chemi-Coat is a heavy duty, gloss floor and wall coating that's virtually odourless, hygienic and easy to wipe clean. Available in nine colours.

- **Coverage** 4 litre pack will cover up to **18m²** with one thick coat
- **Super tough finish** Resistant to heavy wear and perfect for areas at risk from chemical spills. Ready for heavy traffic after 24 hours
- **Stops chemical damage** Highly resistant to many chemicals (see list above right for full details)
- **One's enough** Can be used over existing coatings. Use a roller, ideally at around 20°C and one coat is usually enough
- **Good on floors and walls** Use on horizontal and vertical surfaces made from concrete, brick or steel, and with underfloor heating up to 30°C. **Watco 4-Hour Epoxy Primer** is recommended when applying to porous surfaces. **Watco Powerfloat Primer** to be used on powerfloated concrete and other smooth surfaces

► 4L • £153.40

## Watco Chemi-Coat® Rapid

**The quick drying version.** Same chemical resistance as standard Chemi-Coat, but faster curing time.

- **Coverage** A 4 litre pack will cover up to **18m²** with one thick coat
- **Quick's the word** The area is ready for heavy traffic in just 6 hours (at 20°C)

► 4L • £168.50

## TOOLS!

Check out our range to find the right tools for the job

## You may also need...

Tools	Each
Medium Pile Roller Frame and Handle	£33.50
Medium Pile Replacement Roller	£7.30
Plastic Scuttle	£6.70

## Watco Chemi-Coat® Cold Cure

**Coating that cures even when it's cold.**

Chemi-Coat Cold Cure delivers all the useful features of our standard Chemi-Coat in one coat, even at freezing temperatures.

- **Coverage** A 4 litre pack will cover up to **18m²** with one thick coat
- **Likes the cold** Specially formulated coating for cold areas from 0°C to 10°C. Ready for heavy traffic in 48 hours at 0°C
- **Works with the weather** Can be applied indoors and outdoors all year round

► 4L • £168.50

## Watco Chemi-Coat® Acid Strength

**Ultimate resistance against the toughest chemicals.**

Chemi-Coat Acid Strength offers the tough durability of our standard Chemi-Coat and also guarantees a protective finish capable of withstanding even extra strong chemicals.

- **Coverage** A 4 litre pack will cover up to **18m²** with one thick coat
- **Stops acid attacks** Resistant to acids, including 98% sulphuric acid. Thick coating makes it ideal for chemical bund areas where safety is key

► 4L • £173.80

## Watco Chemi-Coat® Anti Slip

**Reduces surface slip for increased safety.**

Chemi-Coat Anti Slip delivers all the excellent features of standard Chemi-Coat but with coarse aluminium oxide grit for maximum grip and wear resistance.

- **Coverage** A 4 litre pack will cover up to **18m²** with one thick coat
- **Health and safety priority** Anti-slip aggregate reduces workplace accidents

► 4L • £158.50

Chemi-Coat® (all)	Black
Chemi-Coat® (all)	Light Grey
Chemi-Coat® (all)	Mid Grey
Chemi-Coat® (all)	Dark Grey
Chemi-Coat® (all)	Stone
Chemi-Coat® (all)	Mid Blue
Chemi-Coat® (all)	Mid Green
Chemi-Coat® (all except Chemi-Coat® Acid Strength)	Tile Red
Chemi-Coat® (all)	Safety Yellow

# Spectrum Transform your premises with over 190 RAL colours to choose from



## Watco Spectrum

Whether you want to mark out an area, or paint your whole floor in an exact shade, we have the colour for you. With over 190 bespoke colours to choose from it has never been easier to get the perfect look for your premises.

If you couldn't find your ideal shade out of the 13 colours of Concrete Floor Paint available, then Spectrum is the product for you. Choose from 190 RAL colours to find the perfect colour for your premises, and get the same strength and benefits of **Watco Concrete Floor Paint**

- **Any colour** The wide range of colours means that you can mark out your premises more effectively than before or match your floors to your brand identity
- **Strong Formula** The tough single pack urethane formulation transforms, brightens, strengthens, and dustproofs your floors, and is designed for both internal and external use
- **Easy to apply** This coating is easy to apply and results in an easy to clean, mid-gloss finish
- **Can be used on most surfaces** Strong enough for general use in warehouses, factories and workshops, attractive enough for use in showrooms, retail areas, leisure facilities, or play areas.

Please be aware that For technical reasons it is not possible to tint this paint formulation to certain colours, e.g. florescent colours, but over 95% of the RAL colours are available. Some slight shade variation may occur. If a colour match is critical please ask for a sample.



► **5L\* • £75.00**

## You may also need...

Tools	Each
5" Paint Brush	£7.10
12" Medium Pile Roller Frame & Handle	£33.50
Medium Pile Replacement Roller	£7.30
Plastic Scuttle	£6.70

**Next day delivery not available with this product.**

\*Supplied in 5 litre, single pack units. Whilst the addition of most colour tints produces 5 litres certain shades may reduce the volume to 4.7 litres.

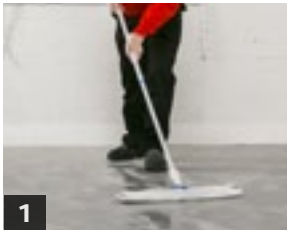


# Fastcoat Innovative Resin formulation.

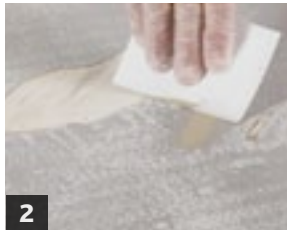
## Prepare and paint your floors in just one day



Fastcoat – How it's applied



**1**  
**Clean and prepare** with our solvent-impregnated wipes



**2**  
**Repair holes** with rapid-curing Watco Concrex® Fine Filler



**3**  
**Prime** with Fastcoat Primer



**4**  
**Mix** two-part top coat



**5**  
**Cutting in** Do edges first by brush



**6**  
**Apply** two top coats of Fastcoat by roller

## Watco Fastcoat

**Quick's the word with our newest floor paint.** Fastcoat is a brilliant new resin formulation that allows you to have your floor cleaned, prepared and painted within a single day.

Uniquely developed by Watco's paint chemists, Fastcoat is a revolution in floor coatings that has only been made possible by recent developments in polyaspartic resin technology. Our unique formulation uses this incredibly versatile resin to produce a high grade, high performance paint. Available in five popular colours, Fastcoat provides a tough, resilient surface with a smart, gloss finish that is ideal for production areas, warehouses, showrooms – all heavily used areas. Once the cleaning, repairing and priming is completed, the floor is given two top coats and will be ready to take light traffic within 6 to 8 hours and heavy traffic in 12 hours.

- **Coverage** 25m<sup>2</sup> per 2.5L, per coat. Two coats usually required
- **Lightning fast** Get the second coat on within 2 hours at 20°C
- **All conditions** Goes down easily in a wide range of conditions, from -10°C to +30°C. Slower drying below 20°C

► 2.5L • £112.00

## Watco Fastcoat Anti Slip

**All the benefits of Fastcoat, but includes a fine, slip-resistant aggregate.** An easy to apply, fast drying, gloss finish for use on floors both indoors and out.

- **Coverage** 25m<sup>2</sup> per 2.5L, per coat. Two coats usually required

► 2.5L • £116.00

## Watco Fastcoat Primer

**Apply to painted or bare concrete.** Dries to a tacky finish at 20°C, and ready for top-coating in only 30 minutes to 1 hour

- **Coverage** Approx 25m<sup>2</sup> per 2.5L

► 2.5L • £85.50

## You may also need...

	Light Grey
	Mid Grey
	Mid Blue
	Mid Green
	Tile Red

Tools	Each
Fastcoat Wipes for 25m <sup>2</sup>	£10.00
Wipes Application Tool	£12.00
Concrex® Fine Filler 1.5kg (includes gloves, applicator & 2 spatulas)	£41.90
Microfibre Roller Frame and Handle	£33.50
Plastic Scuttle	£6.70

# Decorative coatings

## Combining durability and style



Stellar Metallic Chip

### FREE SAMPLES

It helps to try before you buy so to help you check colour, slip resistance and other variables, we will happily send you a free dry or liquid sample.

## Watco Stellar Metallic Chip

**Your floors will make a lasting impression when you use our unique chip coating.** Enhance your premises with this decorative and durable metallic floor coating.

This unique floor coating offers outstanding wear resistance, durability, and a highly decorative appearance. A hard-wearing metallic chip is sealed with a polyaspartic resin to produce an attractive finish.

- **Coverage** Approx 10m<sup>2</sup> per pack
- **Brighten your floors** The impressive, light reflecting surface will brighten up

your premises, and you can choose from 5 attractive colours

- **For any environment** Ideal for use in showrooms, retail areas, bars, restaurants, or anywhere you want an attractive & durable floor
- **Slip resistant** Fine surface texture specially designed for slip resistance
- **Unique** The innovative heavy duty formulation is unique to Watco - you won't get a floor coating like this anywhere else

► **5L • £215.00**

	Silver Black
	White Gold
	Silver
	Gold
	Bronze





## Watco Stellar Metallic Coating

**A highly attractive metallic coating that will transform your floor.** Hard-wearing, glossy and easy to apply, the metallic effect reflects the light, lifting dull areas and transforming floors.

The two part epoxy resin formulation will take heavy wear, including forklifts, making this coating ideal for warehouses, production areas and workshops as well as showrooms and restrooms.

Stellar Metallic Coating base coat should be roller applied. To ensure the best finish, the top coat should be spray applied. Please contact us for further details.

- **Coverage** Approx **30m<sup>2</sup>** per 5 litres for base and top coats, when applied by roller
- **Choice of colours** Available in a range of colours including Silver, Gold, Copper, Pearl, Cobalt and Ruby
- **No waiting** Apply to Base Coat one day and finish with the Metallic Top Coat the next.

► **5L • £220.50**

	Silver
	Gold
	Copper
	Pearl
	Cobalt
	Ruby

## Watco Stellar Flake System





**You no longer have to choose between style and strength.** This sleek, decorative coating is ideal for use where appearance, practicality, and durability are important.

A unique blend of coloured PVA flake is bound into two coats of polyaspartic resin to achieve a light reflecting gloss finish and outstanding wear resistance.

- **Coverage** Approx **10m<sup>2</sup>** per 2.5 litre pack when applied by roller
- **Strong** Ultra-tough and easy to clean
- **Chemical resistant** Resistant to common chemicals and staining from everyday spillages
- **Choice of colours** Choose from 4 nature inspired colours

- **Versatile** Ideal for showrooms, retail areas, reception areas, or anywhere that appearance is important

► **5L • £250.00**

	Glacier
	Dolomite
	Flint
	Granite

## You may also need...

Tools	Each
Roller Frame and Handle	£33.50
Replacement Roller	£7.30
9" Roller and Tray	£9.00

## Preparation - we recommend...

<b>Watco Etch &amp; Clean</b> New or bare concrete <b>Page 44</b>	<b>Watco Bio D</b> Dirty, oily painted surfaces <b>Page 44</b>
<b>Watco Concroff</b> Greasy, oily bare concrete <b>Page 44</b>	<b>Watco Powerfloat Primer</b> Powerfloated, very smooth surfaces <b>Page 45</b>



# Protecta-Coat Tough long-lasting protection for floors



## Watco Protecta-Coat

**Hard-wearing resin coating provides long-term protection.** Developed by Watco using the latest polyaspartic resin technology, our two pack liquid coating enhances the appearance of surfaces, while providing one coat resistance against wear and tear.

Protecta-Coat gives a clear, mid-gloss finish and strong protection for coloured and decorative surfaces.

Suitable for internal and external use, it provides excellent chemical resistance, while our Protecta-Coat Anti Slip version greatly improves safety at work.

- **Coverage** Approx **30m<sup>2</sup>** per 2.5 litres.
- **Handles hard jobs** Can be applied at temperatures from -10°C up to 30°C and in areas such as warehouses and showrooms and walk-in fridges. Resists chalking, fading, weathering and has exceptional resistance to UV
- **Hassle free application** Ensure the area is clean, dry and free from grease. Takes only one coat. For Anti Slip, an aggregate is simply added to the mix before application
- **Back in action fast** Ready for light traffic in 6 to 8 hours, and heavy traffic in 12 hours at 20°C
- **Safety first** Protects from chemical spills. The addition of a special aggregate means **Protecta-Coat Anti Slip** provides added grip to reduce accidents

▶ **2.5L • Standard • £93.80**

▶ **2.5L • Anti Slip • £99.60**

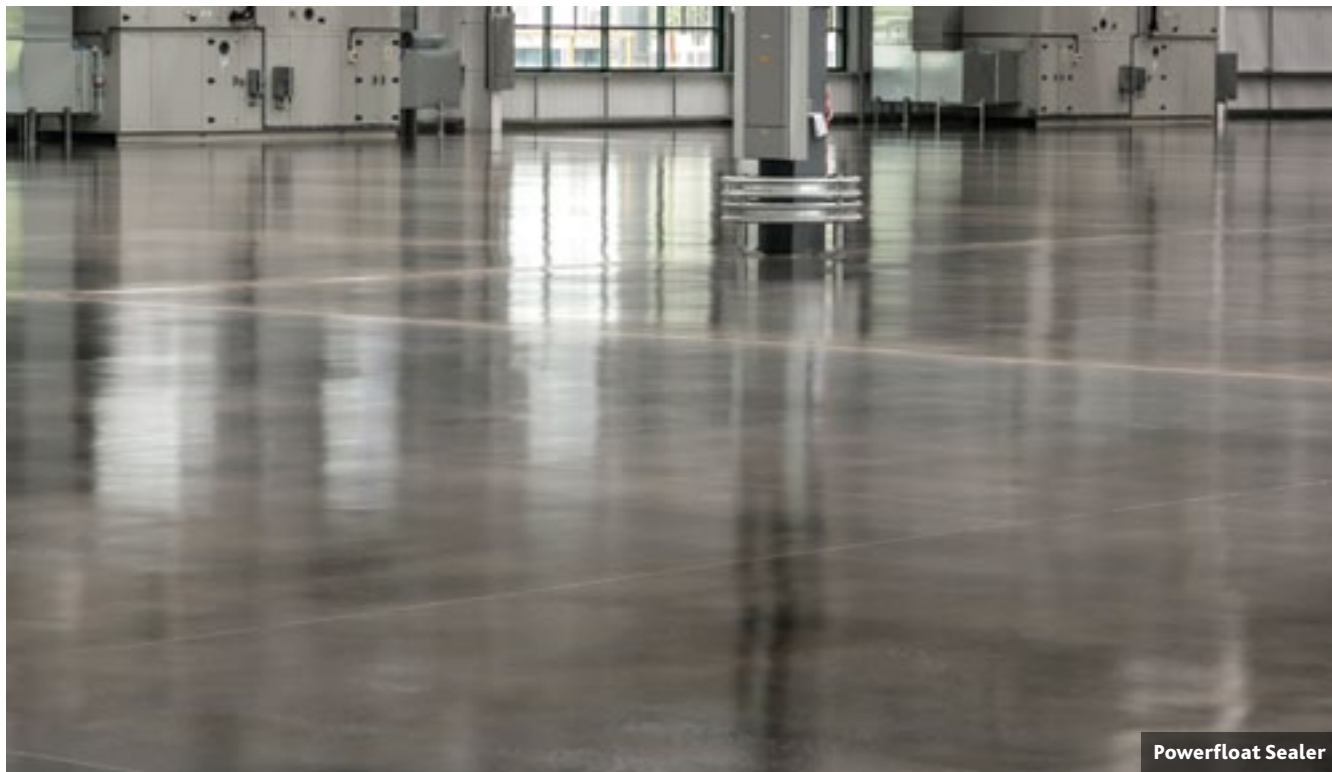
## You may also need...

Tools	Each
Short Pile Roller Frame and Handle	£33.50
Short Pile Replacement Roller	£7.70
Plastic Scuttle	£6.70

## Preparation - we recommend...

<b>Watco Etch &amp; Clean</b> New or bare concrete <b>Page 44</b>	<b>Watco Bio D</b> Dirty, oily painted surfaces <b>Page 44</b>
<b>Watco Concroff</b> Greasy, oily bare concrete <b>Page 44</b>	<b>Watco Powerfloat Primer</b> Powerfloated, very smooth surfaces <b>Page 45</b>

# Seal and protect smooth or powerfloated concrete



Powerfloat Sealer

## Watco Powerfloat Sealer

**Seals and protects smooth or powerfloated concrete.** Unique epoxy resin formula can be applied directly to powerfloated concrete removing the need for blasting or texturing.

Powerfloat Sealer maintains the attractive smooth surface of concrete while avoiding costly shotblasting work.

- **One coat** seals, dustproofs and protects
- **Hardwearing** Suitable for busy, heavy traffic areas
- **4 finishes** Choose from: Gloss Matt, Gloss Anti Slip, Matt Anti Slip
- **Easy to apply** Just apply with a roller directly to the smooth surface

- **Coverage** Approx **30m<sup>2</sup>** per 5 litres
- **Curing time** 16 hours at 15°C-20°C for heavy traffic

- ▶ **5L • Gloss • £70.80**
- ▶ **5L • Gloss Anti Slip • £75.00**
- ▶ **5L • Matt • £70.80**
- ▶ **5L • Matt Anti Slip • £75.00**

Use a medium pile roller for a smooth application



## You may also need...

Tools	Each
Medium Pile Roller Frame and Handle	£33.50
Medium Pile Replacement Roller	£7.30
Plastic Scuttle	£6.70

## Preparation - we recommend...

Watco Concroff	Watco Etch & Clean
Greasy, oily bare concrete	New or bare concrete
Page 44	Page 44

# Hardens and dustproofs porous concrete



INSTANT  
QUOTE

Please call our Customer Service team on 01483 418 418 to discuss your requirements. We can give you a quote straight away.

Concrete Sealer Water Based Vynacoat	Light Grey
Vynacoat	Mid Grey
Concrete Sealer Water Based/Solvent Based Universal Sealer Vynacoat Anti Slip Tile Kit	Clear
Vynacoat	Mid Blue
Vynacoat	Tile Red
Vynacoat	Mid Green
Vynacoat	Yellow
Vynacoat	Black

Concrete Sealer Solvent Based



## Watco Concrete Sealer Water Based

**For stain resistant and easy to clean surfaces.** Concrete Sealer Water Based provides a low sheen, acrylic finish in just one or two coats.

Odourless and virtually solvent free, our water-based Concrete Sealer produces minimal darkening of most surfaces. Available in a clear and light grey tint finish.

- **Coverage** Approx **40m<sup>2</sup>** per 5 litres
- **Cuts down on cleaning** Dustproofs and seals, while making interior surfaces stain resistant and easier to clean. Penetrates and coats surfaces with a micro-porous formulation, allowing material to breathe
- **Heavy duty** Ideal for heavy use areas such as warehouses, factories and garages. For interior or exterior use on concrete and other cement-based materials. Only suitable for porous surfaces
- **Minimal fuss** Cures in 12 hours at 15°C to 20°C

► 5L • Clear • £59.40

► 25L • Clear • £238.40

► 5L • Coloured • £66.00

## Watco Concrete Sealer Solvent Based

**Solvent-based lacquer for a tough, glossy surface.** Concrete Sealer Solvent Based is a clear polyurethane lacquer that improves the appearance of interior concrete-based surfaces and delivers a durable, scratch resistant gloss finish in just two coats.

- **Coverage** Approx **45m<sup>2</sup>** per 5 litres
- **Heavy duty defence** Moisture curing solution guarantees excellent chemical resistance. Withstands regular forklift truck use, so it's ideal for heavy wear environments such as factories, warehouses, workshops and garages
- **Fast finish** Ready for a second coat in 8 hours. Cures in 12 hours at 15°C to 20°C. For use in well ventilated areas. Can be applied to sealed or painted areas

► 5L • £59.80

## Watco Universal Sealer Dustproof

**Strengthens and dustproofs porous concrete.** Our Universal Sealer Dustproof is a water-based, colourless and virtually odourless micronised acrylic that gets to work deep beneath new or old concrete surfaces.

The result is a hardened, dustproof surface with just one coat.

- **Coverage** Approx **30m<sup>2</sup>** per 5 litres, depending on porosity
- **Clean sweep** Very easy application with a broom for interior and exterior surfaces including sand and cement, and concrete
- **Increased quality** Strengthens weak, dusty, poor quality concrete and similar surfaces, while the micro-porous formula allows materials to breathe
- **Quick and low cost** Usually one coat is enough, cures in 12 hours at 15°C to 20°C

► 5L • £54.50

► 25L • £225.50

Use a soft broom for an easy application of Universal Sealer Dustproof.



### TOOLS!

Check out our range to find the right tools for the job

## Vynacoat

**Transform drab, worn or stained vinyl or lino with our two pack polyaspartic resin coating.** Its fine texture makes wet or slippery areas safer.

This tough coating features excellent chemical, UV and fade resistance making it suitable for kitchens, walk in fridges, assembly lines, canteens, corridors, stairwells, shops and toilets etc.

- **Coverage** Approx. **25m<sup>2</sup>** per 2.5 litre unit, one coat of the clear version is usually sufficient; two coats of the coloured version may be required, especially on darker surfaces
- **Colours Available** Comes in 7 different colours as well as a clear version
- **Curing time** Light traffic in 6-8 hours at 20°C, heavy traffic 12 hours at 20°C

► 2.5L • £101.30

## Anti Slip Tile Kit

**Everything you need to clean, prepare, prime and finish your tiled floor from start to finish.** The clear two pack polyaspartic coating maintains the tiles appearance and keeps areas safe where spillages can occur.

This durable coating has excellent UV and abrasion resistance and is also resistant to chalking, fading and weathering. It can be applied to glazed, ceramic or quarry tiles.

- **Anti Slip Tile Kit contains** Tile Cleaner 1L, IPA Solvent Wipes, Tile Primer, Anti Slip Tile coating and gloves. The Tile Cleaner removes dirt and grease, the solvent wipes just ensure and grease residue is removed. One coat of Tile Primer (25-30m<sup>2</sup> per 5L) provides the correct base for one coat of the Anti Slip Tile Coating.
- **Coverage** Approx. 1 kit covers **25-30m<sup>2</sup>**
- **Versatile** Suitable for interior and exterior use
- **Curing time** Light traffic in 6-8 hours at 20°C

► 25m<sup>2</sup> • £159.00

## You may also need...

Tools	Each
Roller Frame and Handle	£33.50
Soft Broom	£10.00



Etch & Clean

## Watco Etch & Clean

**Get floors clean and ready to accept coverings, both indoors and out.** Our acid-based etchant is excellent at getting rid of unwanted dirt from bare concrete to provide the very best base for painting.

It's useful too for reducing alkalinity on new concrete that can potentially cause problems with the effectiveness of a coating.

- **Coverage** Approx **20m<sup>2</sup>** per 5 litres
- **Scrubs up well** Removes dirt and laitance (weak, dusty layer) on new concrete
- **Strong bonds** Ensures excellent bonding of all coatings
- **Easy to use** The pink liquid gel turns clear when it's done its job

► **5L • £26.60**



Bio-D

## Watco Bio-D

**Prepare floors with no odours.** Biodegradable degreaser that can be used on concrete, asphalt, sand and cement in any confined spaces or where strong odours would be a problem.

Masonry and concrete floor surfaces washed with Bio-D and then rinsed with water are left ready for painting and require no second stage cleaner to remove residues before further treatment.

- **Coverage** Approx **20m<sup>2</sup>** per 5 litres
- **Eco Friendly** solvent free and biodegradable, rinse off with zero harmful effects
- **Goes further** can be diluted with water for lighter cleaning jobs

► **5L • £30.20**

► **25L • £114.90**



Concروff®

## Watco Concروff®

**Powerful de-greasing action the green way.** Special formulation that offers all the benefits of a strong degreaser but without the use of hazardous chemicals.

Concروff is ideal for floor preparation prior to repair or painting. It is safe for use on most painted surfaces and can be rinsed away or mopped up with absorbent granules when done.

- **Coverage** Approx **20m<sup>2</sup>** per 5 litres
- **Super-concentrated** Formula can cope with even the most thickly impacted grease and oil. Suitable for use both inside and out, easily applied with a stiff broom
- **Multi-tasking** Can also be used to degrease machines

► **5L • £34.00**



New Concrete Primer

## Watco New Concrete Primer

**If you have a new concrete floor waiting to be painted, this is the solution you have been looking for.** Now you can apply a coat of paint to a concrete floor that is just 10 days old.

Most surface coatings can only be applied to dry floors... not anymore! If the concrete has dried for 10 days, and the surface is reasonably hard and level, then you can use this concrete primer, and within 4-48 hours you can have a freshly painted floor.

- **Fast drying** Dries in 3-4 hours at 15°C-20°C, so you can overcoat in just 1 day, reducing downtime
- **Easy to apply** Easy to spread, low viscosity formula which is virtually solvent free and has good chemical resistance
- **Can be used on new concrete** Allows coatings to be used on concrete containing as much as 95% humidity

► **6kg • £103.00**



Powerfloat Primer & Rapid

## Watco Powerfloat Primer & Rapid

**Tricky to paint surfaces need a primer that's up to scratch.** Floors with hard, smooth surfaces are prone to rejecting paint. But our Powerfloat Primer formulation will ensure a perfect finish every time.

- **Coverage** Approx **30m<sup>2</sup>** per 5 litres and one coat is usually all that's needed
- **Roll it on** Easy application with a roller
- **No waiting** Can usually be over-coated in 16 hours; Rapid in just 3 hours
- **Hard surfaces** Use on powerfloated or glazed concrete, ceramic tiles, stainless steel and aluminium
- **Colour** Clear and Light Grey; **Rapid** Light Grey only

► **5L • Standard • £70.80**

► **5L • Rapid • £81.30**



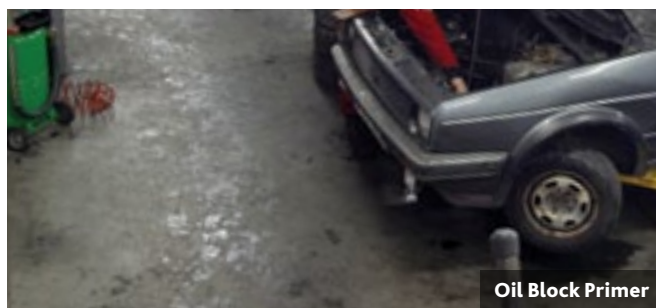
4-Hour Epoxy Primer

## Watco 4-Hour Epoxy Primer

**Difficult surfaces are ready to go in a single day.** Fast-acting, virtually solvent-free primer reduces suction on porous surfaces.

- **Coverage** Depends on the porosity but you can expect to be able to cover **20m<sup>2</sup>** per 5 litres
- **Deep penetration** Major benefits over water-based primers when it comes to penetration and curing
- **Superior** Binding of weak and friable surfaces
- **Cuts costs** Reduces time and labour by doing the job in just one coat

► **5L • £81.70**



Oil Block Primer

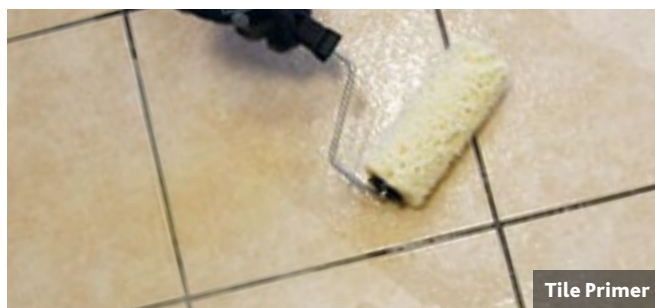
## Watco Oil Block Primer

**Now you can paint your contaminated, oily surfaces with ease.** Just one coat will prepare your oily, difficult to clean floors for painting.

Oil Block Primer is a two part epoxy primer that has been specially developed to aid adhesion to porous surfaces that are hard to thoroughly clean.

- **Easy to use** The solvent penetrates the substrate and combines with oily residues, making it easy for you to paint your floors
- **Suitable for most surfaces** Suitable for concrete, brick and masonry, and timber surfaces in warehouses, factories, garages, or machine workshops
- **Best for interior areas** Intended for mineral oil residues, such as motor oil or cutting oils, in interior areas

► **4L • £62.80**



Tile Primer

## Watco Tile Primer

**Get tiles ready for painting without flaking problems.** Our primer makes it easy to paint difficult surfaces such as glazed tiles.

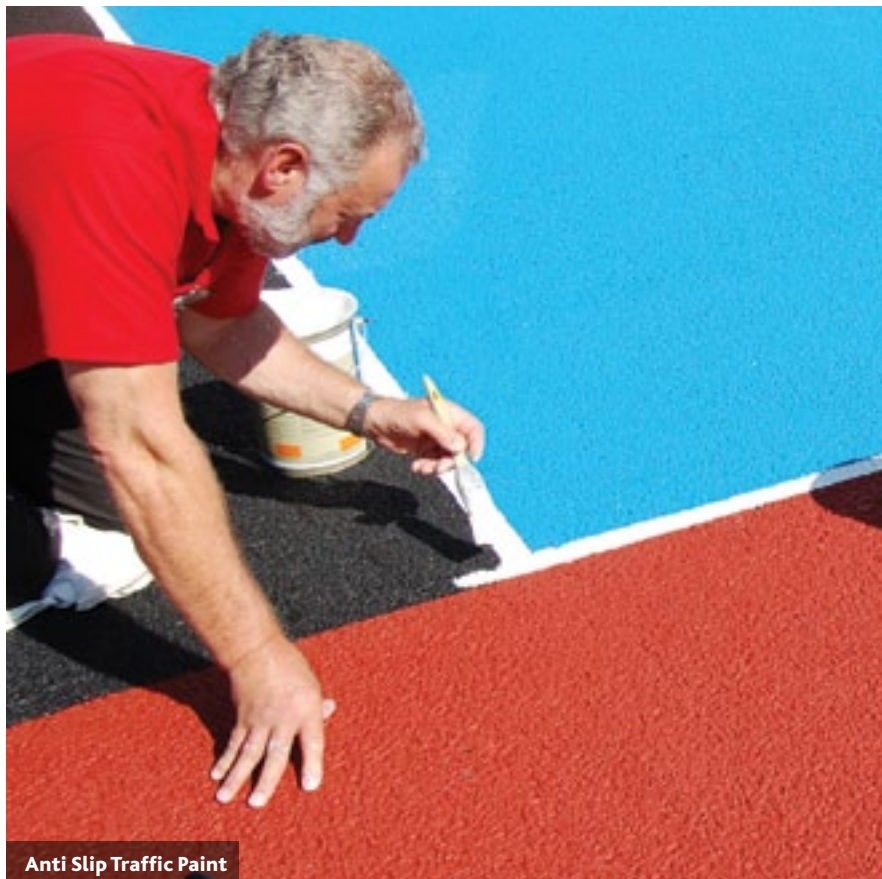
The milky-white coating of Watco Tile Primer becomes transparent when the product dries and if you need to retain an existing floor pattern, you simply cover the primer with a clear top coat, such as **Protecta-Coat**. Hard-working epoxy formula that is easy to apply.

- **Coverage** Approx **30m<sup>2</sup>** per 5 litres
- **No patches** Milky colouring makes it easy to see which areas have been coated before drying clear

► **5L • £70.80**



# Attractive, protective paints for all exterior surfaces



Anti Slip Traffic Paint

Use Watco road paints to highlight hazards, mark out parking bays and pedestrian areas, or simply to rejuvenate existing surfaces

Anti Slip Traffic Paint/ Heavy Duty Anti Slip Traffic Paint	<b>Light Grey</b>
---	-------------------

Anti Slip Traffic Paint/ Heavy Duty Anti Slip Traffic Paint Asphalt Paint/ Heavy Duty Asphalt Paint Road Paint Rapid	<b>Mid Grey</b>
---	-----------------

Anti Slip Traffic Paint/ Heavy Duty Anti Slip Traffic Paint Asphalt Paint/ Heavy Duty Asphalt Paint Road Paint Rapid	<b>Black</b>
---	--------------

Anti Slip Traffic Paint Asphalt Paint/Heavy Duty Asphalt Paint	<b>White</b>
--	--------------

Asphalt Paint/ Heavy Duty Asphalt Paint Road Paint Rapid	<b>Mid Blue</b>
--	-----------------

Anti Slip Traffic Paint/ Heavy Duty Anti Slip Traffic Paint	<b>Safety Blue</b>
---	--------------------

Anti Slip Traffic Paint/ Heavy Duty Anti Slip Traffic Paint Asphalt Paint/ Heavy Duty Asphalt Paint	<b>Tile Red</b>
---	-----------------

Anti Slip Traffic Paint/ Heavy Duty Anti Slip Traffic Paint Asphalt Paint/ Heavy Duty Asphalt Paint	<b>Mid Green</b>
---	------------------

Anti Slip Traffic Paint/ Heavy Duty Anti Slip Traffic Paint Asphalt Paint/ Heavy Duty Asphalt Paint	<b>Yellow</b>
---	---------------

Road Paint Rapid	<b>Safety Red</b>
------------------	-------------------



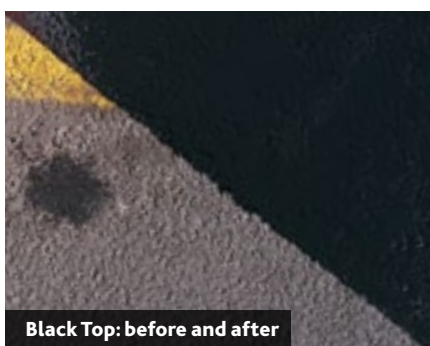
Asphalt Paint



Asphalt Binder



Watco Road Paint Rapid



Black Top: before and after

## Watco Anti Slip Traffic Paint

**Textured, slip resistant coating for traffic areas.** With UV resistance and low slip potential for pedestrians (Wet PTV 55), Watco's Anti Slip Traffic Paint delivers improved safety by highlighting hazards and safe walking zones.

Anti Slip Traffic Paint is a durable traffic paint that's suitable for use on interior and exterior asphalt and concrete surfaces, including car parks, vehicle areas, tennis courts and playgrounds.

Available in 8 colours.

- **Coverage** Approx. **15m<sup>2</sup> to 20m<sup>2</sup>** for one coat per 5 litres
- **Trouble free** Can be applied to damp surfaces. No primer is required and curing time is only 24 hours at 15°C to 20°C
- **One coat coverage** Usually requires only one coat. For garages and vehicle workshops we recommend using one of our epoxy resin coatings, such as **Watco Safety Coat**
- **Meets Building Regulations** Our Safety Blue colour option complies with Part M of Building Regulations for disabled car parking bays

► 5L • £104.80

## Watco Heavy Duty Anti Slip Traffic Paint

**Extra reassurance for those outdoor surfaces that take the most traffic.** A finely-textured and chemical-resistant paint that's a solvent based, two-part epoxy resin.

You can rely on it for places that take a serious amount of wear.

- **Heavy traffic** Ideal for car parks, driveways and cycle lanes

► 5L • £116.20

### You may also need...

Tools	Each
Medium Pile Roller Frame and Handle	£33.50
Medium Pile Replacement Roller	£7.30
Soft Broom	£10.00
Plastic Scuttle	£6.70

## Watco Asphalt Paint

**Colourful protection for asphalt surfaces.** Our Asphalt Paint's unique formulation creates a flexible, waterproof coating that's perfect for brightening up the appearance of light to medium traffic areas.

Virtually solvent free and odourless, Watco Asphalt Paint can be easily applied with only a brush or roller. Available in 7 colours.

- **Coverage** **20m<sup>2</sup> to 30m<sup>2</sup>** per 5 litres, for one coat
- **Done in one** Usually requires just one coat and cures in 24 hours at 15°C to 20°C. Suitable for many uses including asphalt, concrete, brick, masonry and other similar porous surfaces
- **Whatever the weather** Excellent resistance to UV and weathering. Can even be applied to damp surfaces

► 5L • £87.50

## Watco Heavy Duty Asphalt Paint

**Brilliant coverage for places where other water-based paints fail.** Makes hard-working areas look great as well as offering heavy-duty protection from the elements.

Suitable for car parks, playgrounds, warehouses, tennis courts, plant rooms and traffic routes, Watco Heavy Duty Asphalt Paint has a coverage of 20m<sup>2</sup> to 30m<sup>2</sup> per 5 litres and one coat is usually all that's needed.

- **Doesn't fade** Superior resistance to wear, UV and weathering
- **Rich colour** Better coverage thanks to high pigment levels
- **Flexi surface** A flexible, waterproof membrane that easily copes with heavy usage
- **Damp start** Can even be applied to damp surfaces. No need to wait for the good weather

► 5L • £106.60

## Watco Asphalt Binder

**Transforms old asphalt so it looks brand new.** If your asphalt is crumbling, faded and stained, there's no need to rip it up.

This product binds and strengthens old asphalt in a way that looks freshly laid.

- **Coverage** Approx **10m<sup>2</sup> to 20m<sup>2</sup>** from 5 litres, depending on surface texture
- **Easy application** Just spread it on with a broom
- **Cover up** Hides ingrained dust and cement spills from building work

► 5L • £48.10

## Watco Road Paint Rapid

**Quick acting, hard-wearing road paint.** Road Paint Rapid is a tough, fast drying solution for busy exterior areas such as car parks, walkways, and school playgrounds.

Suitable for bare concrete and asphalt surfaces, it's easy to apply with a brush or roller and handles even heavy traffic after just one coat. Exceptional wear resistance makes it ideal for heavy traffic areas.

Available in 4 colours.

- **Coverage** **15m<sup>2</sup> to 18m<sup>2</sup>** per 5 litres
- **Super speedy** Showerproof in only an hour and ready for light traffic after just 2 hours at 15°C to 20°C. Suitable for vehicle traffic after 6 to 8 hours at 15°C
- **Cool under pressure** Can be applied at temperatures as low as 5°C

► 5L • £76.50

## Watco Black Top

**One coat is all you need.** Give grey and weathered asphalt and tarmac a new lease of life.

- **Coverage** **5m<sup>2</sup> to 10m<sup>2</sup>** per 5 litres, per coat of Black Top
- **Looks like new** Covers old stains
- **No waiting** Cures in 2-5 hours at between 5°C and 20°C

► 5L • £41.60

### Preparation - we recommend...

#### Watco Bio D

Dirty, oily painted surfaces  
Page 44

# A new standard in safety



Peter Dennis - Watco Group Chemist

Your safety is our concern. That's what drove us to create an even better epoxy Safety Coat for your floors. Our paint chemists have worked on a new, unique formula that not only contains a fine anti-slip particle, but also a 'diamond hard' wax and ceramic additive to make it 40% harder wearing than before. It's not just better, it's our best.

## HOW DOES IT WORK?

Our Safety Coat is an extremely tough, two pack epoxy resin engineered for areas where you need traction to keep you from slipping. Its fine, anti-slip particle is suspended in the paint, leaving a finely textured surface that looks better than gritty surfaces. The texture also makes it easier to clean, saving you much needed time and effort.

## WHAT DO THE TESTS SAY?

To bring you the best possible epoxy Safety Coat, we put it through rigorous testing, where our new formulation more than proved itself. It'll bring you even more abrasion, scratch and impact protection than you'd hoped for. We also made sure it held up to adhesion, hardness, chemical resistance and flexibility testing to deliver a coat that'll last year after year.

## THE COARSE COAT

We've thought carefully about your different needs, which is why we've also reformulated our epoxy Safety Coat Coarse. It's been designed for those areas that get very wet or greasy. It contains a larger anti-slip particle to enhance grip and slip resistance. It's simple to apply with a roller, again, easier to clean and has been developed with low odour.

## A COAT FOR MANY AREAS

Our epoxy Safety Coat also comes in a hygienic grade option, which contains silver ion technology. This is perfect for areas where cleanliness and hygiene are as important as a hard-wearing finish.

## OUR GUARANTEE TO YOU

We're so confident that we've created the best quality concrete floor paints for you, they're 100% guaranteed. If you experience any problems or you're not entirely happy, just call us on 01483 418 418.





“It’s not just better,  
it’s our best.”

Learn more at [watco.co.uk/besteverformula](http://watco.co.uk/besteverformula)

# Safety Coat Best Ever Formula for non-slip floors you can trust

Safety Coat's unique formula has now been reinforced making it our most durable water based safety floor coating ever.

A 'diamond hard' wax and ceramic dispersion has been blended with epoxy resin to make our new 'Best Ever' formula 40% harder wearing than before. It also dries in half the time so you can apply 2 coats in one day and get your floor back into use twice as quickly.



Watco Safety Coat is available in a range of finishes:

Standard/Coarse Hygienic Hygienic Coarse	<b>Light Grey</b> RAL No. 7035
Standard/Coarse Hygienic Hygienic Coarse	<b>Mid Grey</b> RAL No. 7036
Standard/Coarse Hygienic Hygienic Coarse	<b>Dark Grey</b> RAL No. 7005
Standard/Coarse Hygienic Hygienic Coarse	<b>Black</b> RAL No. 9005
Standard/Coarse Hygienic Hygienic Coarse	<b>Mid Blue</b> RAL No. 5015
Standard/Coarse Hygienic Hygienic Coarse	<b>Dark Blue</b> RAL No. 5005
Standard/Coarse Hygienic Hygienic Coarse	<b>Deep Red</b> RAL No. 3003
Standard/Coarse Hygienic Hygienic Coarse	<b>Signal Red</b> RAL No. 3020
Standard/Coarse Hygienic Hygienic Coarse	<b>Hazard Yellow</b> RAL No. 1021
Standard/Coarse Hygienic Hygienic Coarse	<b>White</b> RAL No. 9010
Standard/Coarse Hygienic Hygienic Coarse	<b>Mid Green</b> RAL No. 6002
Standard/Coarse Hygienic Hygienic Coarse	<b>Tile Red</b>
Standard/Coarse Hygienic Hygienic Coarse	<b>Sandstone</b> RAL No. 1014
Standard/Coarse Hygienic Hygienic Coarse	<b>Blue Grey</b> RAL No. 7000
Standard/Coarse Hygienic Hygienic Coarse	<b>Stone</b> RAL No. 7032



## Watco Safety Coat

**Non-slip and easy-clean.** Areas with heavy traffic need a resilient, reliable product that also looks the part.

Traditional non-slip paints can be gritty and hard to clean. But our unique formula includes a special aggregate suspended in the paint that makes for an appealing covering, which can be cleaned in no time and offers a reassuringly safe non-slip surface. For interior use.

- **Coverage** Approx **30m<sup>2</sup>** per 5 litres, per coat
- **Fast curing** Dries in only 3 hours at 20°C for light traffic or application of a second coat
- **Safe and reliable** Fine particles are embedded in a hard-wearing epoxy resin coating
- **Eco friendly** Virtually solvent-free and non-flammable
- **Non slip reassurance** Low slip potential (Wet PTV 65) and suitable for heavy wear areas including concrete, sand and cement, and wood

► **5L • £146.70**



## Watco Safety Coat Coarse

**Added slip resistance for wet or greasy floors.**

Safety Coat contains a very fine particle which makes smooth floors non slip. For wet or greasy areas where additional help may be required choose Safety Coat Coarse. A larger particle size increases slip resistance in the wet.

- **Coverage** Approx **30m<sup>2</sup>** per 5L per coat
- **Easy to apply** 2 coats normally required
- **Fast curing** Dries in only 3 hours at 20°C for light traffic or application of a second coat

► **5L • £146.70**

## Watco Safety Coat Hygienic

**Contains silver ion technology to provide cleanliness you can trust.** All the benefits of Safety Coat but with an additive which makes it ideal for food areas, cleanrooms, restrooms, etc.

- **Coverage** Approx **30m<sup>2</sup>** per 5L per coat
- **Easy to apply** 2 coats normally required
- **Fast curing** Dries in only 3 hours at 20°C for light traffic or application of a second coat

► **5L • £156.40**

## Watco Safety Coat Coarse Hygienic

**Helps keep wet, greasy areas clean.**

- **Easy to Apply** 2 coats normally required
- **Fast curing** Dries in only 3 hours at 20°C for light traffic or application of a second coat

► **5L • £156.40**

## Preparation - we recommend...

Watco Etch & Clean	Watco Bio D
New or bare concrete	Dirty, oily painted surfaces
Page 44	Page 44
Watco Concroff	Watco Powerfloat Primer
Greasy, oily bare concrete	Powerfloated, very smooth surfaces
Page 44	Page 45

## Tests and Standards Compliance

Finish	Result/Rating					
<b>Standard/ Hygienic</b>	 ADHESION EN 1542 4.1 MPa (4.1 N/mm²)	 IMPACT RESISTANCE ISO 6272 CLASS 3	 SCRATCH RESISTANCE ISO 45862 7N	 FLEX ISO 1519 2mm	 SLIP RESISTANCE BS7976-2 67 PTV (Dry) 63 PTV (Wet)	 EN 1504-2
<b>Coarse/ Hygienic Coarse</b>	 ADHESION EN 1542 4.1 MPa (4.1 N/mm²)	 IMPACT RESISTANCE ISO 6272 CLASS 3	 SCRATCH RESISTANCE ISO 45862 7N	 FLEX ISO 1519 2mm	 SLIP RESISTANCE BS7976-2 65 PTV (Dry) 59 PTV (Wet)	 EN 1504-2

Refer to page 98 for more information on our Tests and Standards Compliance

## You may also need...

Tools	Each
<b>Watco Painting Kit</b>	£54.00
Kit comprises: 12" medium pile roller, frame & telescopic handle; replacement roller; plastic scuttle; 5" & 2" paint brushes; paint mixer	



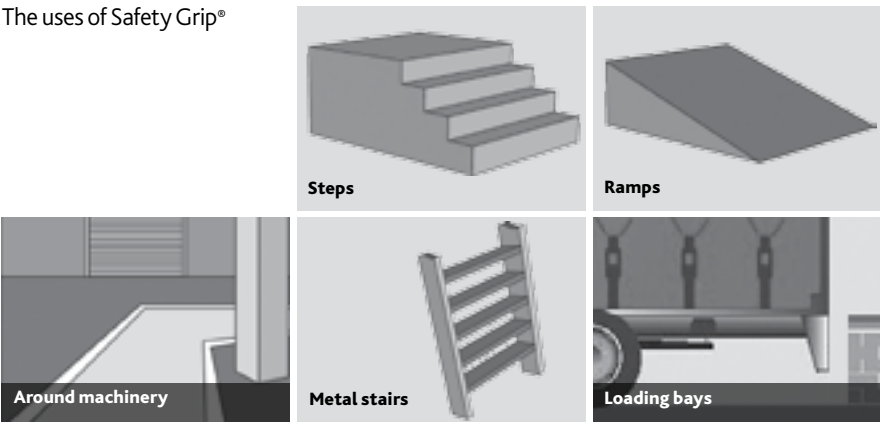
# Safety Grip® For when the going gets tough.

The special coarse finish provides a secure non-slip surface even in areas that are wet or prone to oil spills



Safety Grip®	White
Safety Grip® Safety Grip® Cold Cure Safety Grip® Rapid	Black
Safety Grip® Safety Grip® Cold Cure Safety Grip® Rapid	Light Grey
Safety Grip® Safety Grip® Cold Cure Safety Grip® Rapid Safety Grip® Flex	Mid Grey
Safety Grip® Safety Grip® Cold Cure Safety Grip® Rapid Safety Grip® Flex	Tile Red
Safety Grip® Safety Grip® Cold Cure	Stone
Safety Grip® Safety Grip® Cold Cure	Buff
Safety Grip® Safety Grip® Cold Cure Safety Grip® Rapid Safety Grip® Flex	Safety Blue
Safety Grip® Safety Grip® Cold Cure Safety Grip® Rapid	Safety Red
Safety Grip® Safety Grip® Cold Cure Safety Grip® Rapid	Safety Green
Safety Grip® Safety Grip® Cold Cure Safety Grip® Rapid	Safety Yellow*

The uses of Safety Grip®



\*A coat of Watco Epoxy Gloss Coat Hazard Yellow (page 26) is recommended on darker substrates or bare concrete prior to applying Watco Safety Grip Safety Yellow

## Watco Safety Grip®

**Works on wet surfaces.** Turn dangerous surfaces into a slip-free zone.

You can't compromise on safety in areas of potential hazard and our coating offers complete reassurance.

The coarse texture of this coating works even when surfaces are wet or oily so it's perfect for spots such as loading bays, areas around machinery or inside exterior doors where a wet floor is an issue.

- **Coverage** Approx **5m<sup>2</sup>** per pack. One coat is usually sufficient
- **Safe Surface** Heavy-duty epoxy resin coating that's virtually solvent free
- **Takes the strain** Can withstand constant foot and wheeled traffic
- **Prevents contamination** Chemical resistant
- **Independently tested** Slip resistance – wet PTV94

► **5m<sup>2</sup> • £108.00**



## Watco Safety Grip® Rapid

**Fast solution.** There's no time lost with our fast-drying formula.

- **Coverage** Approx **5m<sup>2</sup>** per pack
- **Added grip** Only one coat needed. Roller out, scatter aggregate and roll again
- **Speedy solution** Surface is good to go for light traffic in just 8 hours

► **5m<sup>2</sup> • £114.90**

## Watco Safety Grip® Cold Cure

**Best choice when it's cold.** Safe and secure footing even in the iciest temperatures.

Perfect for unheated areas, outside in the winter months or anywhere the temperature drops below 10°C.

- **Coverage** Approx **5m<sup>2</sup>** per pack
- **Cold Curing** Cures at 0°C

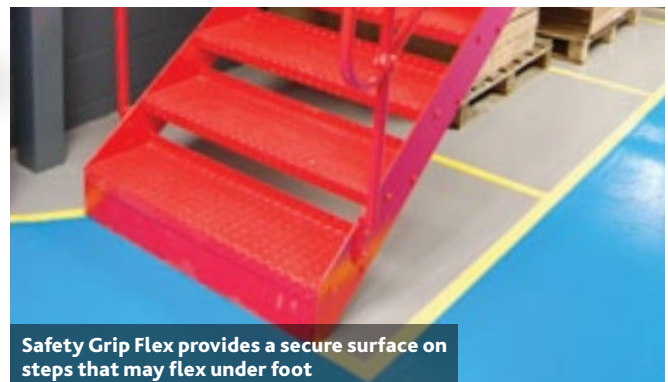
► **5m<sup>2</sup> • £114.90**

## Watco Safety Grip® Flex

**Tough, flexible and 100% reliable.** All the benefits of our anti slip coating but with added flexibility for those areas where there may be movement, such as metal or wooden ramps.

- **Coverage** Approx **5m<sup>2</sup>** per pack
- **Reliable all rounder** Can be used inside and out on concrete, asphalt that's more than 6 months old, wood and metal

► **5m<sup>2</sup> • £113.80**



## Preparation - we recommend...

Watco Etch & Clean
New or bare concrete Page 44
Watco Galvaprime
If applying to galvanised metal Page 78

Watco Bio D
Dirty, oily painted surfaces Page 44
Watco Powerfloat Primer
Powerfloated, very smooth surfaces Page 45

## You may also need...

Tools	Each
Galvaprime 1L	£24.00
For use on galvanised surfaces - see page 78	
12" Roller Frame & Handle	£33.50
Replacement Roller	£7.70



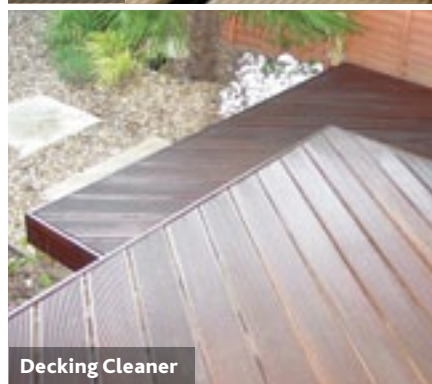
## Peace of mind for decking and outdoor timber surfaces



Decksafe Advanced



Decksafe



Decking Cleaner

### Watco Decksafe® Advanced

**Tough durable coating makes decking super safe.** The very latest technology ensures you get good-looking, hard-working decking and pathways.

Our research into polyaspartic resin technology has led to an advanced, exceptionally durable, formula. Decksafe Advanced helps to prolong the life of your decking and offers the reassurance of our patented anti-slip texture in just one coat.

- **Coverage** 20m<sup>2</sup> per coat (depending on porosity). Suitable for softwood and hardwood
- **Sun loving** Resists UV fading and discolouration
- **Easy going** Apply with a short pile roller or brush
- **Flexible** Prevents surface cracking from movement
- **Non scratch** Resists abrasion and even chemical spills

► 2.5L • £101.30

### Watco Decksafe®

**Makes decking non slip quickly and easily.** Our basic but strong formula makes stained or unstained decking safer for light to medium use.

- **Easy to apply** Use a roller or brush for a finely textured matt finish
- **Coverage** 40m<sup>2</sup> per 5 litres per coat
- **Safe in the wet** Extremely low slip potential – Wet PTV 65
- **Quick work** Touch dry in 4 hours
- **Natural look** Oak version leaves a tinted finish

► 5L • £66.30

### Watco Decking Cleaner

**Powerful cleaner smartens up wooden decking.** Keep decking looking its best with our water-based and biodegradable cleaner.

Removes all kinds of dirt, algae and lichen in no time.

- **Coverage** Approx 20m<sup>2</sup> per 5 litres
- **Shifts stubborn spots** Use undiluted for the tough ones

► 5L • £19.20

Decksafe® Advanced  
Decksafe®

Clear

Decksafe®

Oak



A single coat of Watco exterior floor finish is all it takes to provide a tough, non-slip surface suitable for pedestrian and vehicle traffic



## Watco Grip-Master

**New formula is easily applied and is ready for use in four to six hours.** This super tough anti-slip coating looks great and is easy to apply with a roller to walkways and ramps.

- **Coverage** Approx up to **5m<sup>2</sup>** per unit. Coverage rates will be reduced on very coarse or open textured surfaces
- **Safety first** A rapid-curing coloured epoxy resin that holds the anti-slip aggregate in an attractive colour blend
- **For feet and wheels** Can be used in areas of both pedestrian and vehicle traffic

► **5m<sup>2</sup> • £101.50**

## Grip-Master Comfort

**Made using recycled car tyres for a less abrasive finish.** A safer alternative for Grip Master, to improve safety in areas where people might fall.

An anti slip finish for areas used by children or vulnerable people who could fall. Made with recycled materials for a less abrasive, impact and noise absorbing finish.

- **Coverage** Same as **Grip-Master**
- **Safe and comfortable** Recycled rubber crumb creates a cushioned, slip resistant finish
- **No waiting** Easily and quickly applied - ready for use in just 4-6 hours
- **Perfect for childrens play areas** Withstands heavy traffic, and can be applied to concrete, tarmac and asphalt, so is perfect for a car park or children's play areas

► **5m<sup>2</sup> • £101.50**

Grip-Master

## You may also need...

	Grip-Master Comfort	Black
	Grip-Master	Natural Grey
	Grip-Master	Natural Stone

Tools	Each
Roller/Frame and Handle	£33.50
Replacement Roller	£7.30



Easy Marking Tape



Heavy Duty Line Marking Tape

## Watco Easy Marking Tape

**Eye-catching safety tape that won't curl or tear.** Research in our labs has led to this incredibly strong 160 microns thick tape with a high spec adhesive that makes light work of line marking.

Good inside and out. Use **Watco Safety Tape Primer** for dusty or porous surfaces.

- **Here to stay** Virtually permanent after just one day's curing
- **Top marks** Waxed backing paper makes it easier to plan; simply cut pieces to size before sticking down

▶ 30m x 50mm • £21.10

## Watco Heavy Duty Line Marking Tape

**Long-lasting, 1000 microns (1mm) high-performance tape that keeps working even when the lights go out.** High performance tape with a self-adhesive backing you can trust to stay firm.

- **Bright idea** Photoluminescent grade glows for up to 30mins once lights are off
- **Safe option** Easy to clean – comes with a two-year guarantee and chamfered edges to reduce the chances of tripping
- **Hazard marker** Perfect for walkways, loading areas or hazardous areas

▶ 30m x 50mm • £92.80

▶ 30m x 75mm • £133.60

▶ 30m x 100mm • £173.70

Heavy Duty Line Marking Tape	Black
Heavy Duty Line Marking Tape Easy Marking Tape	Blue
Heavy Duty Line Marking Tape Easy Marking Tape	Green
Heavy Duty Line Marking Tape Easy Marking Tape	Red
Heavy Duty Line Marking Tape	Orange
Heavy Duty Line Marking Tape Easy Marking Tape	White
Heavy Duty Line Marking Tape	Photo Luminescent
Heavy Duty Line Marking Tape Easy Marking Tape	Yellow
Heavy Duty Line Marking Tape Easy Marking Tape	Yellow + Black
Heavy Duty Line Marking Tape Easy Marking Tape	Red + White

Remove sticky residues with **Watco Protect Wax, Tar & Tape Residue Remover** (see p93).



### TOOLS!

Check out our range to find the right tools for the job



## You may also need...

Tools	Each
Rubber Mallet	£3.00
IPA Cleaner 1L	£18.00
Rubber Roller	£7.30



Thermoline®



Permaline



Watco Stepmarker

## Watco Thermoline®

**Preformed long-lasting lines and symbols.** Thermoline is a thermoplastic formulation, providing permanent 2mm thick markings for heavy traffic areas such as roads and warehouses.

Our preformed lines and symbols mean there's no cutting required. Simply lay your shape on a suitable surface and heat using the **Watco Thermoline Blowtorch**.

- **Big choice** Select from a wide range of symbol options and 2 different colours. Thermoline White contains reflective particles for added road safety
- **Cools down in a flash** Ready for traffic in approx 1 hour
- **One man job** Quick and easy application for interior and exterior surfaces including concrete, tarmac, asphalt, brick, masonry, metal, and other similar surfaces
- **Preparation Watco Tape Primer** should be used on dusty, porous surfaces

Thermoline® Lines	Each
1m x 100mm - Pack of 10	£52.90
1m x 100mm - Pack of 50	£226.70
5m x 100mm - Pack of 10	£234.40
Thermoline® Symbols	Each
Straight Arrow* 2m	£47.00
Walking Man 980mm	£77.60
Disabled 800mm x 800mm	£47.00
Disabled 1.4m x 1.4m (DDA Compliant)	£85.50
*Only available in white	
Blowtorch (Excludes gas)	£102.40

## Watco Permaline

**Lines that are here to stay, where visibility is needed the most.** A brand new concept in line marking.

It's virtually permanent and designed for the most demanding, heavy traffic areas – 3mm thick heavy duty pre-drilled GRP strips with chamfered edges to reduce the tripping hazard.

- **Easy lay** Trim and screw on site
- **Fix and go** Once fixed in place it's good to go straight away
- **Machine friendly** Oil and chemical resistant, so can be used even around machinery bays

► **50mm x 3m • £23.50**

Thermoline® Permaline Stepmarker	White
Thermoline® Permaline Stepmarker	Safety Yellow

## Watco Stepmarker

**Lasting slip resistant coating for lines and step edges.** Watco Stepmarker is an easy to apply pre-blended aggregate that stands tough against the wear of regular foot traffic, while highlighting edges and potential trip hazards.

Available in 2 colours.

- **Coverage** 1 litre produces **100mm wide line for approx. 25m** of step edges
- **Helps stop slips** Low slip potential even when wet (Wet PTV of 56) makes it ideally suited to surfaces that suffer daily wear including step edges and loading bays. Can be used as an extra tough line marker (if using indoors, ensure the area is well ventilated). Suitable for concrete, brick, asphalt, stone, wood, and metals
- **No hassle** Can be used as low as 5°C. Ready for foot traffic in 4 hours at 15°C

► **1L • £43.90**



Use a 2" paint brush to apply

## You may also need...

Tools	Each
2" Paint Brush	£3.40
Cleaning Solvent TH99 - 2.5L	£22.70





Epoxyline



High Visibility Paint



Toughline®

## Epoxyline

This epoxy resin paint will give you long-lasting lines even in your heaviest traffic areas. Cures so quickly that you can be back in action the next day.

Ideal for use in heavy traffic areas, this epoxy resin line marking paint cures quickly and has excellent resistance to abrasion and harsh chemicals.

- **Coverage** Approx. **50m of 50mm wide line** per litre (2.5m<sup>2</sup>). One coat is normally sufficient if you're applying by brush
- **Fast dry** Touch dry overnight, with full chemical resistance in 5 days
- **Suitable for most areas** Suitable for areas subject to chemical spillage, as well as any high traffic interior areas
- **Low odour** Virtually solvent free and odourless
- **Easy to apply** Simply apply by brush, one coat is usually sufficient and is suitable for bare concrete and well bonded paint

► **1L • £41.90**

## High Visibility Paint

Increase visibility of hazards around your premises with this fluorescent paint. Highlight trip hazards, mark out lines, or draw attention to low beams.

High Visibility Paint is a solvent free, easy to apply fluorescent paint. Ideal for highlighting hazards and marking out important lines around your premises, inside and out.

- **Coverage** approx. **10-15m<sup>2</sup>** per 2.5 litres per coat depending upon texture of substrate. One coat is normally sufficient
- **Easy to apply** Easily applied by brush or roller, the thick consistency can be effectively applied to horizontal and vertical surfaces
- **High visibility** Use to mark out lines, hazardous beams, trip hazards, or snag points in any area, including walkways, playgrounds, and warehouses
- **Resistant** Excellent resistance to UV, weathering, and can withstand light - medium traffic
- **Suitable when damp** It has a flexible, waterproof membrane and can even be applied to damp surfaces

► **2.5L • £62.80**

## Watco Toughline®

Quality line markings made for cold and exterior surfaces. Using Watco's brilliant, versatile polyaspartic resin technology, Toughline guarantees high quality, wear and tear resistant lines for those difficult cold, wet environments.

Toughline® resists chemicals, chalking, fading, weathering and UV discolouration, making this the ideal paint choice for heavily-trafficked and chilly areas such as unheated warehouses, walk-in fridges, cold stores and loading bays.

Available in 2 colours.

- **Coverage** Approx **75m of 50mm wide line**, per litre
- **Welcomes warm and cold** Can be applied at temperatures from -10°C to 30°C. Stands up to heavy traffic in just 12 hours at 20°C, and 48 hours at -10°C
- **Versatile** Suitable for porous surfaces, including concrete

► **1L • £48.10**

Epoxyline Toughline®	White
Epoxyline Toughline®	Safety Yellow
High Visibility Paint	Fluorescent Yellow

Coatings are easily applied with a 9" roller and tray



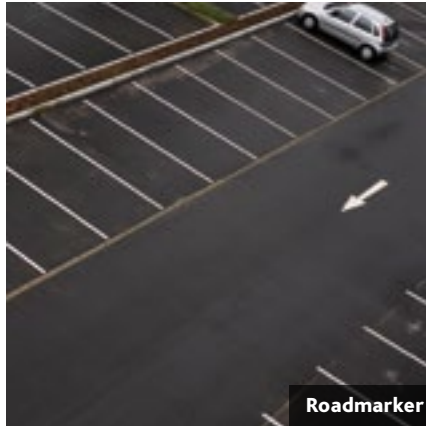
## You may also need...

Tools	Each
2" Paint Brush	£3.40
9" Roller and Tray	£9.00
Cleaning Solvent TH99 - 2.5L	£22.70

# Refresh car parks with our line marking paints



Sprayline® Plus



Roadmarker



Trafficline

## Watco Sprayline® Plus

### Industry standard aerosol line paint.

Sprayline Plus is a fast, accurate and easy to apply industrial grade aerosol paint for use with Watco's Sprayline Plus Applicator.

Ideal for marking out light to medium traffic areas including car parks and factory floors, it produces high visibility lines in nearly no time. Available in two colours.

- **Coverage** Approx **60 to 100m (50mm wide line) per 750ml**
- **Makes its mark** Durable and weather resistant. Suitable for concrete, sand and cement, and asphalt. Requires only one coat for smoother surfaces, and two for textured areas
- **First to the finish line** Touch dry in 15 minutes at temperatures above 10°C

► 750ml • £19.30

## Watco Sprayline® Plus Applicators

### Store, transport and apply Sprayline with our easy folding applicator.

Sprayline Plus Applicators are designed for use with Sprayline Plus paint.

While the 4 wheel applicator covers large areas fast, the 2 wheel applicator is the ideal choice for curved lines.

- **Custom lines** Both applicators can be adjusted to produce lines between 25mm to 50mm wide

► 2 Wheel Applicator • £128.50

► 4 Wheel Applicator • £203.50

## Watco Roadmarker

**Tough and rapid solvent based exterior paint.** Roadmarker chlorinated rubber paint is fast drying and can be applied with a roller or brush: ideal for marking bare exterior concrete and asphalt in heavy traffic areas.

- **Coverage** Approx **250 to 300m of 50mm wide line (12 to 15m² per pack)** Thickness 300 microns
- **Low maintenance** Usually requires just one coat and can be applied at temperatures as low as 0°C. Tolerates slightly damp surfaces. Showerproof after 1 hour and ready for pedestrian traffic in 4 hours at 10°C
- **Roadmarker Reflective** Available for enhanced visibility

► 5L • £64.80

► 5L • Reflective • £70.70

## Trafficline

**Our most versatile line marking paint for your interior and exterior areas. Ideal for marking out your car park**

Trafficline is an advanced acrylic formulation which is suitable for almost any surface - it can even go over existing paint. Easy to use and water based for an easy clean up.

- **Flexible for multiple surfaces** The acrylic formulation means this paint is flexible, and can be used on a number of surfaces, including asphalt, tarmac, porous concrete, metals, and more
- **Quick and easy** One coat is all you need, and the brushes wash out easily with water, so line marking is now a much quicker job
- **Whatever the weather** Can be applied to slightly damp surfaces
- **Coverage** Approx **200m at 50mm wide line per 5 litres**, depending on substrate. One coat usually sufficient

► 5L • £87.50

Roadmarker Trafficline Sprayline® Plus	White
Roadmarker Trafficline Sprayline® Plus	Yellow

## You may also need...

Tools	Each
2" Paint Brush	£3.40
Cleaning Solvent TH99 - 2.5L	£22.70

# Resurface floors to protect against water and chemical spills



Plant Room Coating

## Plant Room Coating

**Tough, seamless, flexible protection for your premises. Contain spillages and leaks in your plant rooms. It is very important that spillages and leaks in plant rooms are contained, and chemicals or water don't seep through flooring to rooms below.**

Plant Room Coating is a flexible, waterproof, durable coating which fills and bridges joints and cracks.

• **Thick and flexible** This waterproof coating will fill bridge and fill joints and gaps

- **Excellent adhesion** Prevent liquids from burst pipes or a leaking tank from damaging your premises
- **Non toxic formulation** Can be used not only in plant rooms but anywhere that spillages need to be contained
- **Save time** One coat is usually sufficient, and is suitable for use on concrete, brickwork, stone, masonry, or plaster
- **Coverage 12.5m<sup>2</sup>** per 25kg at 1mm thick. One coat usually sufficient

► **25kg • £111.40**

	Grey
	Tile Red
	Green
	Off White

Tile Red and Green contain a colour pigment.





## Watco Liquid Waterproofer

**Non-toxic, breathable and watertight.**

You can feel confident that areas prone to damp will stay dry with this waterproofer that's vapour permeable and lets surfaces breathe easily.

Mix thickly for use on vertical surfaces such as basement walls and storage tanks. Provides a smooth or textured finish depending on the roller used.

- **Coverage** per 25kg: thickness/area:  
**Protection and repair:** (apply 1 coat) 1mm/12.5m<sup>2</sup>  
**Waterproofing up to 3 metres head of water:** (apply 1 coat) 1.25mm/8.3m<sup>2</sup>  
**Waterproofing over 3 metres head of water:** (apply 2 coats) 2mm/6.25m<sup>2</sup>  
**Frost protection and abrasion resistance:** (apply 2 coats) 2.25mm/5.5m<sup>2</sup>
- **Where there's water** Can be used everywhere from swimming pools to basements and workshops prone to damp
- **Winter challenge** Resistant to frost and salt attack
- **Non toxic** Safe to use, even for drinking water

► **25kg • £127.50**



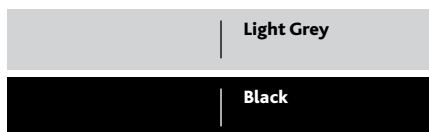
## Watco Bund Sealer

**Unbeatable formula seals and protects against attack from chemicals.** Watco Bund Sealer's new easier-to-apply formula, with glass flake reinforcement, guarantees exceptional resistance to chemicals including Skydrol.

Specially designed for bund areas and storage tanks where durability really counts, Bund Sealer waterproofs and protects floors and walls with an ultra tough surface up to 450 microns thick in just one coat. Available in two colours.

- **Do it in one** 4 litre pack will cover up to 14m<sup>2</sup> with one thick coat
- **Strong protection** Designed for use on interior and exterior surfaces such as metal tanks and pipes, concrete, sand and cement, and asphalt. Can be applied to damp surfaces
- **Pollution control** Helps comply with the Control of Pollution (Oil Storage) Regulation
- **Flexible curing temperatures** Cures in 48 hours at 0°C and 24 hours at 10°C

► **4L • £163.20**



## Fibreglass Reinforcing Tape

**Waterproof and strengthen vulnerable joints in bund areas.** Ideal for use with Watco Bund Sealer, this easy to cut and use tape provides you with additional reinforcement where there are cracks and joints

- **Prevents leaks** Simply apply along the joint where the bund wall meets the bund floor to prevent bund areas from developing leaks
- **Versatile** Can be used with products other than Watco Bund Sealer if required

► **Each • £30.00**



# Seal and protect interior walls



## Watco Wallseal

**Protect and dustproof your walls without affecting their appearance. This transparent coating produces a silky, low sheen finish that resists staining.**

Wallseal will seal, dustproof, and protect dusty concrete pillars and gritty brick walls, with minimal darkening of the substrate.

- **Coverage** Approx. **40m<sup>2</sup>** per 5 litres per coat
- **Resists staining** Will seal and dustproof your surfaces
- **Versatile** Use internally on render, plaster, concrete, blockwork or brickwork
- **Easy to apply** The water base formula dustproofs the surface in one coat. A second coat may be required for a 'wipe clean' sealed surface

- ▶ **5L • £64.70**
- ▶ **25L • £258.10**



## Watco Wallguard

**Silver Ion Technology sets Wallguard apart from other wall coatings. Achieve a hygienic, easily cleanable, attractive finish.**

Ideal for industrial and commercial environments, Wallguard uses self cross linking acrylic technology to produce a hygienic, durable, and easily cleaned surface.

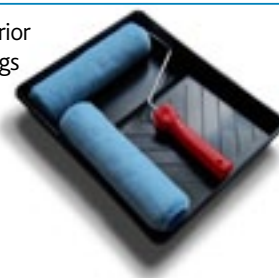
- **Coverage** Approx. **50m<sup>2</sup>** per 5 litres per coat. Two coats are normally required
- **Hygienic Coating** Protects against fungal degradation. Designed for food production areas, hospitals, schools, kitchens and anywhere hygiene is important
- **Easy to clean** The easy to wipe surface is durable enough that repeated cleaning will not deplete the coating

- ▶ **5L • £95.30**

**Proud winners of the Direct Commerce Award**



All our interior wall coatings are easily applied by a roller and tray



## You may also need...

	White
	Cream

Tools	Each
9" Roller and Tray	£9.00



Industrial Wall Coating

## Watco Industrial Wall Coating

**Cut application costs and redecoration time with this fast curing wall coating. This thick emulsion has exceptional covering power.**

Watco Industrial Wall Coating provides excellent covering power with just one application. The special high build non drip formulation will bring a bright, clean appearance to your industrial premises.

- **Coverage** Approx. **50m<sup>2</sup>** per 10 litres per coat
- **Easy to apply** Can be applied to old and worn brick work, as well as blockwork or concrete interior areas. One coat is usually sufficient
- **No hassle** Cures in 12 hours at 15°C

▶ **10L • £54.00**

## BOOK A SITE VISIT

With one of our experts to see what products will be best for your project



Hygienic Wall Coating

## Watco Hygienic Wall Coating

**Protect against fungal degradation and bacterial growth. Easy clean finish with excellent wear and abrasion resistance.**

A tough, scrubbable epoxy resin wall coating ideal for food preparation and industrial processing areas where hygiene is important.

- **Coverage** Approx. **20m<sup>2</sup>** per 3 litres per coat. Two coats are normally required
- **Excellent adhesion** Can even be applied to damp surfaces
- **Strong epoxy formula** This means the surface is scrubbable and has excellent abrasion, wear and chemical resistance
- **Compliant** Conforms to requirements for direct contact with potable water
- **Many uses** Designed for use in industrial processing areas, veterinary areas, hospitals, laundries, changing rooms, showers, toilets and more

▶ **3L • £105.90**



Resists harsh scrubbing

## You may also need...

Tools	Each
9" Roller and Tray	£9.00
5" Paint Brush	£7.10

	White
--	-------



# Our specialist coatings won't let damp win



Damp Proof Course



Weatherguard 10

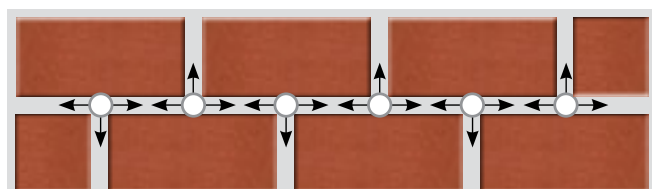
## Watco Damp Proof Course

**Stop rising damp in your walls.** High penetration formula cures slowly and forms a barrier against damp.

This damp proof injection is the easy way to stop rising damp, and the advanced formulation means you can make fewer holes than usual. The highly concentrated silicone cream uses capillary action to spread through your wall and create an effective new damp proof course.

- **Effective** High penetration formula for maximum effectiveness and fewer holes needed than conventional systems
- **No need for special tools** You don't need any high pressure tools or special skills, simply drill 12mm diameter holes at 120mm intervals and inject the cream using a standard skeleton gun.
- **Safe and easy to use** Use the low hazard cream from inside or outside the building on brick, blockwork, or stone surfaces which are affected by rising damp
- **Suitable for most surfaces** Can be used on single skin or cavity walls up to 440mm thick

► **310ml • £26.50**



Watco Damp Proof Course injection cream penetrates across a wall and cures slowly to form a barrier against rising damp.

Wall thickness	110mm	220mm	330mm	440mm
Drill depth	100mm	190mm	310mm	430mm
Allow 1 cartridge for each unit length of wall	3.4m	1.7m	1.0m	0.7m

## Watco Weatherguard 10

**Flexible, weatherproofing guaranteed to last at least a decade.**

Our tough exterior elastomeric membrane formula can take extreme weather and temperatures while allowing walls to breathe.

Suitable for brick, concrete, masonry, tiles and wood.

- **Coverage** Approx **40m<sup>2</sup>** per 10 litres
- **Multi-purpose** Decorative, solar reflective and anti-fungal
- **Fast acting** Touch dry in 4 to 6 hours

► **10L • £96.40**

	<b>White</b>
	<b>Cream</b>

Coatings are easily applied with a 9" roller and tray



## You may also need...

Tools	Each
9" Roller and Tray	£9.00
5" Paint Brush	£7.10
Mixing Blade	£10.80



Rainshield

## Watco Rainshield

**Great protection from frost and rain damage.** No damp, no staining and minimal colour change for your brickwork or concrete in a single coat.

- **Coverage** Approx **25m<sup>2</sup>** per 5 litres
- **Resists frost** Helps prevent frost spalling and crumbling and repels damp
- **Repellent surface** Stands up to rain and damp even in the most exposed environments
- **Done in a day** Dries in 24 hours and a single coat's enough

► **5L • £43.80**



Masonry Waterproofer

## Watco Masonry Waterproofer

**For good-looking walls that cope with the elements.** Keep old buildings dryer and warmer with this breathable product that penetrates much deeper than traditional liquid systems, yet doesn't block pores.

Easy to use cream formula can be applied by roller and works on bricks, mortar and stone.

- **Coverage** Approx **25m<sup>2</sup>** per 5 litres
- **Fully transparent** Turns clear in as little as an hour and is effective after 24 to 48 hours

► **5L • £113.80**



Immediately after application



After 2 hours

Watco Masonry Waterproofer dries clear in two hours and penetrates the bricks to give long-lasting transparent protection after 24 to 48 hours



# Our specialist coatings won't let damp win



Concrex® Damp Repair Kit



Rust-Stop Metal Paint

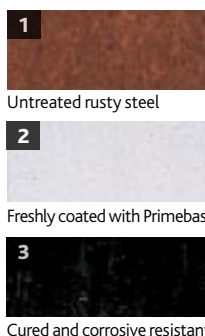
## Watco Concrex® Damp Repair Kit

**Permanently repair wet and damp areas around your premises.** Our kit includes everything you need for incredibly tough damp repairs.

Our Concrex Damp Repair Kit is all you need for incredibly tough, highly adhesive epoxy resin repairs to areas that cannot be dried out easily.

- **Kit contains:** 10kg Concrex, 1m<sup>2</sup> Tack Coat Damp Prime, a 1½" (38mm) brush
- **Interior and exterior** Allows repairs to be carried out on damp surfaces
- **Coverage** Approx. **1.2m<sup>2</sup>** at 5mm thick

► **10kg • £104.70**



## Watco Primebase

**Prime rusty surfaces with this metal primer.** This unique rust converter and primer bites into rust, converting it into an inert, corrosion resistant layer.

It also primes the surface with a tough coating ready for overcoating.

- **Coverage** Approx. 10m<sup>2</sup> per litre
- **Tough and weatherproof**
- **Versatile** Use on silos, storage tanks, pipework, steel racking, structural steel, and more
- **Easy to apply** Apply two coats, by brush or airless spray

► **1L • £35.30**

► **5L • £131.70**

## Watco Rust-Stop Metal Paint

**Flexible, self priming gloss coating which can be directly applied to rust.** Strong coloured finish ideal for industrial environments.

This high quality alkyd gloss coating can be applied directly to rust to give a strongly coloured, heat resistant finish.

- **Coverage** Approx. 7.5m<sup>2</sup> per 750ml unit per coat. One or two coats normally sufficient
- **Saves time** Contains rust inhibitors so can be applied directly to rusty metal, saving you preparation time
- **Easy to apply** Sag resistant and will not show brush strokes after curing. After application you can easily clean Rust-Stop off your brushes with white spirit
- **Use inside and out** Ideal for use in industrial areas, both inside and out, and can be applied as low as 5°C, and is heat resistant up to 90°C
- **Use on most metal surfaces** Suitable for use on any bare or sound pre-painted metal surface except not bare aluminium

► **750ml • £24.80**

	Silver
	Black
	Blue
	Green
	Red
	White
	Yellow





Dampguard

## Watco Dampguard

Decorate, damp proof and maintain a clean surface with this easy to apply, fast drying coating. In 4 hours you can apply the second coat, and after 1 hour the surface will be dry to touch.

Ideal for basements or any area with a damp problem, Dampguard consists of two coats; a primer and a damp proof, wipe clean top coat to finish. Use inside or outside to prevent water seepage through a range of surfaces, and to keep your premises looking attractive and well maintained.

- **Coverage** Approx. **8-10m<sup>2</sup>** per 5 litres
- **Multiple use** Suitable for use on cement, masonry, concrete brick walls, and basement floor slabs, above or below ground
- **Tested strength** Twice the strength of latex waterproofers, Dampguard resists up to 2 bar (35psi) of water pressure
- **Easy to use** Suitable for dry or damp surfaces, ad fast drying - apply a second coat after 4 hours, and it will be touch dry in 1 hour
- **Attractive Finish** This easy to clasn coating is designed to have an attractive finish, however you can overcoat after 14 days if desired although this will reduce mould resistance

► **5L • £57.10**



Dampguard Advanced

## Watco Dampguard Advanced

Specially formulated, this is Watco's best damp proofer yet. Hard wearing epoxy resin coating which protects and waterproofs walls and floors.

Resists two bars (35psi) of pressure.

- **Coverage** Approx **20m<sup>2</sup>** per 3 litres. Two coats required
- **Safe application** Suitable for use in confined areas
- **Hard wearing** Scrubbable, chemical resistant surface
- **Keeps dry** Microporous paint allowed moisture vapour to escape from substrate.
- **Versatile** Use on bricks, render and concrete.
- **Two coats** required

► **3L • £87.20**

Dampguard	White
Dampguard Advanced	Warm White
Dampguard Advanced	Cream

# Give roofs a new lease of life



Roofite® Scrim



Roofite® Solar Reflective



Roofsafe

## Watco Galvaprime

**Prime and prepare galvanised surfaces for great results.** This is a quick and easy option for priming galvanised or zinc sprayed metal prior to coating that ensures you end up with powerful adhesion.

- **Rapid drying** Can be overcoated the same day

► 1L • £24.00



## Watco Roofite® Scrim

**Perfect for bridging gaps and holes.** 4m x 1.25m sheet size.

► 4m x 1.25m sheet • £23.60

► 4m x 1.25m sheet (5 pack) • £114.00



Roofite® Joint Sealant

## Watco Roofite® Solar Reflective

**Versatile, tough and watertight.** A one-coat formula of bitumen, rubber and tough fibre reinforcement that will bridge small holes, cracks and splits.

Ideal for weather-proofing roofs where heat build-up can be a problem.

- **Coverage** Approx 10m<sup>2</sup> per 10kg
- **Easy to use** You can even apply it when it's raining
- **Quick cure** Dries in 24 hours

► 10kg • £88.10

► 25kg • £190.80

## Watco Roofsafe

**For roofs that need to be waterproof and safe.** An anti-slip, tough coating that keeps the elements out and allows people to walk on roofed areas with confidence.

Thick, flexible formulation can be applied in the wet and is immediately water-repellant, making Roofsafe ideal for emergency repairs. One coat of Roofsafe is usually enough for swiftly waterproofing asphalt, bitumen-based surfaces, concrete, roofing felt, asbestos, plastic, brick and metal.

- **Coverage** Approx 10m<sup>2</sup> per 5kg
- **Colour choice** Comes in 4 colours so you can easily mark out accessible areas
- **Fills cracks** Flexible 'high build' formulation bridges splits and fills cracks up to 2mm wide

► 5kg • £70.40

## Watco Roofite® Joint Sealant

**Instant joint and crack repair for roofs.**

A highly flexible bitumen based roof, gutter and lap jointing sealant ideal for preventing leaks.

This formula is suitable for most roofing materials including: felt, metal, paint, stone brick and construction based plastics.

- **Quick Drying** 24 hours in dry conditions
- **Easy Application** Can be applied with a standard cartridge gun

► 310ml • £10.20





Roofite® Pour & Restore

## Watco Roofite® Pour & Restore

**Thick, flexible and totally watertight.** Bridges minor splits and cracks and levels surfaces that undulate.

Apply by squeegee; cures in 24 hours.

- **Coverage** Approx **3.75m<sup>2</sup>** (2mm coat) per 10kg
- **Saves money** Long-lasting and strong enough to avoid costly re-roofing

► **5kg • £42.60**

## Watco Roofite® Repair Mortar

**Fix your leaking roof or gutter with this flexible waterproofer.** Roofite Repair Mortar is a thick, trowellable waterproofer which will repair your leaky roof or gutters.

- **Versatile** Suitable for filling horizontal and vertical holes or depressions where surface water can be a problem, and will cure in 24 - 48 hours
- **Coverage** Each 5kg pack covers **5m<sup>2</sup>** at 1mm thick, and is ideal for all types of repairs to splits and tears around pipes and gutters

► **5kg • £48.10**



Roofite® can even be applied in the rain

## Watco Roofite®

**Quick, easy and long-lasting roof repairs.**

Our unique formula is a mix of thick bitumen, rubber and tough fibre, which means you're getting something tough and protective on your roof.

Use this on any concrete, corrugated iron, tiled or felted roofs for a completely impermeable coating.

- **Coverage** Approx **10m<sup>2</sup>** per 10kg
- **Bridge builder** No more need for costly repair jobs. Bridges small holes, cracks and splits effectively and securely

- **Easy application** One coat usually does the job

- **Stops leaks** Solves porosity problems in asbestos, ideal for fixing holes, tears and cracks in most roofing materials and just right for emergencies, too

- **Curing time** A surface skin will form after approx. 24 hours. Curing will commence once any surface water has evaporated

► **5kg • £40.00**

► **25kg • £161.70**

Roofsafe Roofite® Roofite® Pour & Restore	Black
Roofsafe	Mid Grey
Roofsafe	Green
Roofsafe	Tile Red

## You may also need...

Tools	Each
5" Paint Brush	£7.10



# Seal, protect and repair roofs



Liquid Roof Membrane

## Watco Liquid Roof Membrane

Keep your flat or pitched roof protected, dry and looking good. Our fibre reinforced formula will make sure that you get a seamless finish and worry-free protection in those roof areas where the risk of water leakage is high.

Two coats applied by roller will provide a tough, UV-resistant 1mm plus sealing membrane.

The inert fibre reinforcement provides extra protection where the risk of leakage is high.

- **Coverage** Approx **5 to 7m<sup>2</sup>** per 5 litres per coat, **12 to 16m<sup>2</sup>** per 12.5 litres
- **Not weather dependant** Apply even when the roof is slightly damp
- **No splitting** High elasticity allows a roof to move without splitting
- **Breathes easily** Allows substrate to breathe and release vapours
- **Anti Slip Liquid Roof Membrane** For areas where safety is important

► **5L • £94.40**

► **12.5L • £230.10**

► **5L • Anti Slip • £105.40**

► **12.5L • Anti Slip • £257.60**



Solar Reflective Coating

## Watco Solar Reflective Coating

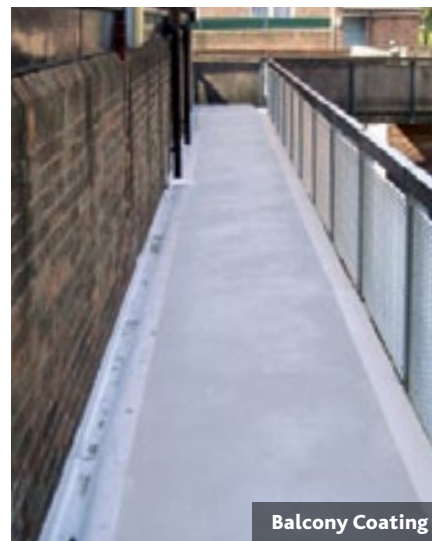
Keep buildings cool and comfortable. Fine glass microspheres in our special formula maximise solar reflection and surface cooling, which means it feels cooler inside when temperatures soar.

- **Coverage** Approx **15 to 20m<sup>2</sup>** per 5 litres
- **Keeping cool** Our tests show this reflects 89% of infra red radiation and 94% of visible light giving a Total Solar Reflectance (TSR) of 88%
- **Effective protector** Will survive 10 years of extreme weather and temperatures

► **5L • £73.10**

Liquid Roof Membrane	Light Grey
Balcony Coating	Grey
Balcony Coating	Blue
Balcony Coating	Buff
Balcony Coating	Green
Balcony Coating	Tile Red
Solar Reflective Coating	White

Balcony Coating Blue, Buff, Green and Tile Red contain a colour pigment.



Balcony Coating

## Watco Balcony Coating

Great protection for balconies and walkways. This hard-working, flexible waterproofer is perfect for those areas where water ingress causes problems.

Its liquid formula means it can be easily applied around pipes and other protrusions. One coat is usually all you need. Cracks and joints between floors and walls should be bridged with **Watco Fibreglass Tape** for the best results.

- **Coverage** Approx **12.5m<sup>2</sup>** at 1mm thick per 25kg
- **Versatile protection** Fill cracks and apply around pipes and rainwater outlets for more effective protection than sheet materials
- **Walk safely** Flexible, anti-slip surface won't split with substrate movement

► **25kg • £123.60**

## You may also need...

Tools	Each
Fibreglass Reinforcing Tape (75mm x 50m)	£30.00



Flashing Bandage

## Watco Flashing Bandage

**A simple, strong, self-adhesive repair solution.** It's easy to achieve long-lasting roof repairs with this flexible tape.

This industrial grade self-adhesive tape is flexible, strong, and watertight, ideal for repairs to damaged roofs

- **Ultra Strong** The lead colour aluminium surface is tough and durable
- **Versatile** Use to repair all types of roofing materials, roof ridges, chimney surrounds etc.
- **Fix cracks and holes easily** Suitable for flashing, cracks in concrete, or holes in pipes or gutters
- **Various sizes** Each roll is 10m in length, and is available in 100mm, 150mm, or 200mm widths

- ▶ **10m x 100mm • £14.30**
- ▶ **10m x 150mm • £20.90**
- ▶ **10m x 200mm • £27.60**
- ▶ **1L • Primer • £8.90**



Flashing Bandage



Roof Walkway Matting

## Watco Roof Walkway Matting

**Hurricane-proof, easy to lay, maintenance free.** The self-draining open grid design of this matting keeps it safe even in icy weather and it can withstand winds of at least 94mph too.

No fixings required; weight holds it in place. Available in black and grey.

- **Self Maintenance** Specifically designed as safe a safe walk way for flat roofs
- **All weather access** UV resistant and non-slip in the rain



Our Roof Walkway Matting comes in handy rolls



Roof Walkway Matting

	Light Grey
	Black
	Yellow

Roof Walkway Matting	Each
42kg Grey/Black 10m long x 600mm wide x 14mm deep	£373.00
62kg Grey/Black 10m long x 910mm wide x 14mm deep	£556.50
83kg Grey/Black 10m long x 1220mm wide x 14mm deep	£732.30
42kg Yellow 10m long x 600mm wide x 14mm deep	£429.00
62kg Yellow 10m long x 910mm wide x 14mm deep	£640.10
83kg Yellow 10m long x 1220mm wide x 14mm deep	£842.20