



Exclusively distributed by

PROTEKTOR UK

Protektor UK Limited,
Protektor House,
Frederick Road,
Hoo Farm Industrial Estate,
Kidderminster,
Worcestershire,
England, DY11 7RA

Tel: 01562 515200

Fax: 01562 515116

InteX Catalogue



InteX

Catalogue

Drywall Tools & Equipment

Building Excellence

Sales Enquires:
Technical Queries & Support:
Website:

tools@protektor.co.uk
technical@protektor.co.uk
protektor.co.uk



Drywall Tools & Equipment



Buckets & Pans

- FEATURES:**
- For mixing gauges of compound. Super pliable plastic material resists cracking.
 - Strong wire handle securely fitted to reinforced lip.
 - Measurement indicators moulded on internal walls.

Code	Description	Barcode	CTN QTY
B0010	Soft Plastic Bucket 10L	9341229001593	25/500

- FEATURES:**
- For mixing gauges of compound and cornice cement.
 - Super pliable plastic material resists cracking.
 - Large flat area allows for efficient use and cleaning.

GP942	Rectangular Gauge Pot 10L	9341229001609	25
-------	---------------------------	---------------	----

- FEATURES:**
- All Stainless construction.
 - Corrosion resistant.

MP712	Stainless Mud Pan 300mm (12")	9341229001012	10
-------	-------------------------------	---------------	----

Bucket Scoop

- FEATURES:**
- Stainless steel blade is precision-cut to match the curvature of most joint compound buckets.
 - Lightweight composite handle designed for comfort and easy cleanup

TBC			
-----	--	--	--

Caulking Guns

- FEATURES:**
- Drip-less Design
 - Tempered Hardened Steel Rod
 - Ladder Hook Design

CG311	Thrust Ratio 7:1 Skeleton Frame 310ml (9")	9341229004884	24
-------	--	---------------	----

CGN311	Thrust Ratio 6:1 Nylon 310ml (9")	9341229011028	24
--------	-----------------------------------	---------------	----

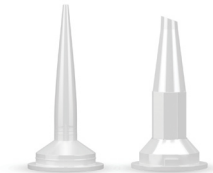
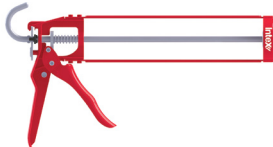
- FEATURES:**
- Ergonomic Operational Design
 - Practical Belt Hook
 - Eased Corner & Narrow Space Sealing
 - Smooth Trigger Operation

CGR500	Thrust Ratio 10:1 Rodless 310ml (9")	9341229015767	24
--------	--------------------------------------	---------------	----

- FEATURES:**
- Impact Resistant Handle & Trigger
 - Nylon & Glass Filled Construction
 - Patented Quick-Fit Tool-less Plunger
 - Smooth Trigger Operation
 - Includes Nozzle

CG670A	Thrust Ratio 12:1 Barrel Gun - 600mm (24")	9341229000718	12
--------	--	---------------	----

CN090	Barrel Gun Nozzle (Pack of 5)	9341229005034	1
CN082	Barrel Gun Multipurpose Nozzle (Pack of 5)	9341229004938	1

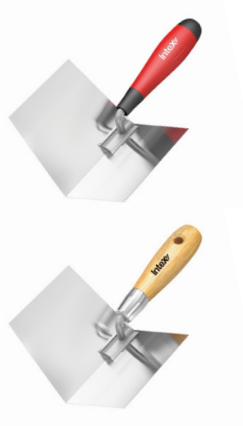




PlasterX® Internal Corner Tools

- FEATURES:**
- Stainless finishing tools for feathering internal corners.
 - Blade set at 103° and tightly flexes to finish down to 90° corners.
 - Durable aluminium blade mounting.

Code	Description	Barcode	CTN QTY
CT285	MegaGrip® Handle - 100mm (4")	9341229004976	6
CT284	Wooden Handle - 100mm (4")	9341229004969	6



CTA01	VersaTrowel® 88° to 150° 75mm (3")	9341229000725	6
-------	------------------------------------	---------------	---



C00V4	V4 Corner Wooden Handle - 50mm (2")	9341229001395	10
C00V5	V4 Corner MegaGrip® Handle - 50mm (2")	9341229004808	10



PlasterX® External Corner Tools

- FEATURES:**
- Stainless finishing tools for feathering external corners.
 - Blade set at 83° and tightly flexes to finish to up to 90° corners.
 - Durable aluminium blade mounting.

C9420	MegaGrip® Handle - 90mm (3.5")	9341229004822	6
-------	--------------------------------	---------------	---



Chalk Reels

- FEATURES:**
- Includes plastic reel case and 30m chalk line, ABS line level and 113g (4oz) blue chalk refill.

Code	Description	Barcode	CTN QTY
CL14B	Chalk Reel Kit 30m	9341229000954	10



Chalk Reel Refills

- FEATURES:**
- Micro fine marking chalk for enhanced marking power.
 - Supplied in moisture proof squeeze bottle with Anti-Spill twist lid.

CR008B	Blue - 8oz (226g)	9341229000985	6
CR008R	Red - 8oz (226g)	9341229000992	6



PlasterX® Stud & Track Crimpers

- FEATURES:**
- Crimps stud and track firmly together with easy single-handed operation.
 - Spring return MegaGrip® handles.
 - Lightweight and compact design allows for easy overhead or tight space work.

CS188	MegaGrip® Handle	9341229006864	6
-------	------------------	---------------	---





Fibre Cement Sheet Cutters

- FEATURES:**
- Heavy Duty construction designed for cutting fibre cement sheet up to 10mm thick.

Code	Description	Barcode	CTN QTY
FB005	Fibre Cement Sheet Cutter	9341229000435	10



FCM89	Score & Snap Knife	9341229000497	12
-------	--------------------	---------------	----



Hammers

- FEATURES:**
- Premium one-piece forged steel construction with polished head and neck.
 - Ergonomic MegaGrip® handle. Built TradeTuff® with balance and temper.

HX320	Claw Hammer 20oz (570g)	9341229000084	6
HX311	Drywall Hammer 14oz (400g)	9341229000091	6



- FEATURES:**
- Premium one-piece forged steel construction with polished head and neck.
 - Genuine English pattern leather grip. Built TradeTuff® with balance and temper.

HL320	Drywall Hammer 14oz (400g)	9341229012575	6
HL311	Claw Hammer 20oz (570g)	9341229012582	6

Floor Scrapers

- FEATURES:**
- Heavy Duty construction for concrete floor cleaning.
 - Wide blade width for effective coverage and angle cut blade sides to protect walls whilst working.
 - Long 1480mm (58") steel handle.

Code	Description	Barcode	CTN QTY
FS214	Blue Steel 350mm (14")	9341229000732	6



PlasterX® Hawks

- FEATURES:**
- Durable and lightweight tempered aluminium.
 - Ergonomic MegaGrip® handle with rubber sponge minimising hand fatigue.
 - Circular grooved plate to securely hold compound.

H6425	Aluminium - 300mm (12")	9341229000107	6
H6485	Aluminium - 330mm (13")	9341229010526	6



- FEATURES:**
- Durable and lightweight tempered aluminium.
 - Ergonomic Wood handle with rubber sponge minimising hand fatigue.
 - Circular grooved plate to securely hold compound.

H6422	Aluminium - 300mm (12")	9341229005003	6
-------	-------------------------	---------------	---

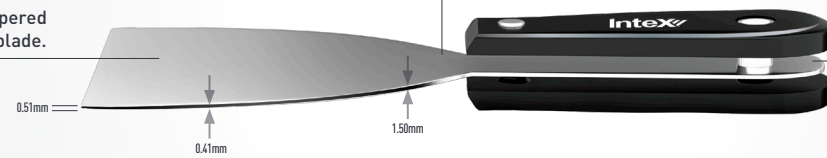




Form follows function

Superior Finish

Hardened and tempered
and fully polished blade.



Controlled Flexibility

Precision ground blade allows for flexibility
whilst maintaining strength at the handle.

Full Tang Constriction

One-piece blade through to the end
of handle eliminating breakages.

PlasterX® Joint Knives - Nylon Series

FEATURES:

- Precision ground and fully polished blades.
- Durable full tang construction, provides controlled flexibility and eliminate breakage.

Code	Description	Barcode	CTN QTY
J1020	Putty Carbon Steel - 32mm (1.25")	9341229005072	12
J1040	Putty Carbon Steel - 51mm (2")	9341229005089	12
J1070	Splayed Carbon Steel - 76mm (3")	9341229005096	12
J1080	Carbon Steel - 102mm (4")	9341229000756	12
J1090	Carbon Steel - 127mm (5")	9341229005102	12
J1100	Carbon Steel - 152mm (6")	9341229001401	12
J1120	Carbon Steel - 254mm (10")	9341229007663	12



J2020	Stainless - 32mm (1.25")	9341229009896	12
J2040	Stainless - 51mm (2")	9341229009926	12
J2070	Stainless - 76mm (3")	9341229005133	12
J2080	Stainless - 102mm (4")	9341229001418	12
J2090	Stainless - 127mm (5")	9341229005140	12
J2100	Stainless - 152mm (6")	9341229000800	12
J2120	Stainless - 254mm (10")	9341229005157	12

PlasterX® Joint Knives - MegaGrip® Series

FEATURES:

- Polypropylene core and ergonomic MegaGrip® moulded handles.
- Precision ground and fully polished blades.
- Durable full tang construction, provides controlled flexibility and eliminate breakage.

J2220	Putty Stainless - 32mm (1.25")	9341229005164	12
J2240	Putty Stainless - 51mm (2")	9341229005171	12
J2270	Splayed Stainless - 76mm (3")	9341229005188	12
J2280	Stainless - 102mm (4")	9341229005195	12
J2290	Stainless - 127mm (5")	9341229005201	12
J2300	Stainless - 152mm (6")	9341229005218	12
J2320	Stainless - 254mm (10")	9341229005225	12



PlasterX® Joint Knives - Hammer Series

FEATURES:

- Polypropylene core and ergonomic MegaGrip® moulded hammer head handles.
- Precision ground and fully polished blades.
- Durable full tang construction, provides controlled flexibility and eliminate breakages.
- 102mm (4") - 152mm (6") features screw tip.

Code	Description	Barcode	CTN QTY
J4220	Putty Stainless - 32mm (1.25")	9341229018201	12
J4240	Putty Stainless - 51mm (2")	9341229018218	12
J4260	Splayed Stainless - 76mm (3")	9341229005256	12
J4280	Screw Tip - Stainless - 102mm (4")	9341229001432	12
J4290	Screw Tip - Stainless - 127mm (5")	9341229005263	12
J4300	Screw Tip - Stainless - 152mm (6")	9341229001449	12
J4320	Stainless - 254mm (10")	9341229007694	12



FEATURES:

- Surface scraper, concave scraper, convex scraper, paint stripper, spreader, flooring knife, gouger, nail setter and puller, hammer, opener and roller cleaner.

J4211C	Combo Tool Stainless - 76mm (3")	9341229014784	12
--------	----------------------------------	---------------	----



PlasterX® Joint Knives - All Stainless Series

FEATURES:

- One-piece full Stainless Easy-Clean design.
- Tempered and precisely ground, fully polished blades.
- Perfectly balanced with controlled flexibility, maintaining strength eliminating breakages.
- Shrink fit MegaGrip® sleeve (5 Pack).

J5038	Putty Stainless - 38mm (1.5")	9341229018591	12
J5051	Putty Stainless - 51mm (2")	9341229018355	12
J5076	Splayed Stainless - 76mm (3")	9341229018362	12
J5102	Stainless - 102mm (4")	9341229018379	12
J5127	Stainless - 127mm (5")	9341229018386	12
J5152	Stainless - 152mm (6")	9341229018393	12
J5200	Stainless - 200mm (8")	9341229018423	12
J5250	Stainless - 250mm (10")	9341229018430	12



J5MHS	Shrink fit MegaGrip® sleeve (5 Pack)	9341229017235	12
-------	--------------------------------------	---------------	----





PlasterX® Joint Knives - DIY Series

FEATURES:

- Disposable plastic joint knives designed for DIY user. Tapered design allows for proper flexibility.

Code	Description	Barcode	CTN QTY
JP015	Putty Plastic - 38mm (1.5")	9341229005287	24
JP004	Plastic - 100mm (4")	9341229001784	24
JP006	Plastic - 150mm (6")	9341229001616	24
JP008	Plastic - 200mm (8")	9341229001623	24
JP010C	Plastic - 250mm (10")	9341229005270	24

PlasterX® Stud Adhesive Applicator Knife

FEATURES:

- Designed for applying stud adhesive to metal and timber frames.

JBG08	Stainless - 200mm (8")	9341229001456	12
-------	------------------------	---------------	----

Insulation Knife

FEATURES:

- Aggressive penetration razor points.
- 2 cutting edges, cut in both forward and reverse directions.
- Heavy Duty full tang construction.
- Long-life precision one-piece hardened and tempered Stainless Steel and Chrome Plated blade.
- Impact resistant ABS handle with ergonomic MegaGrip® rubber over mould.

KI300	Stainless - 300mm (12")	9341229019970	-
-------	-------------------------	---------------	---

PlasterX® Knives - Fixed Blade

FEATURES:

- Heavy Duty construction.
- Quick blade change mechanism.

Code	Description	Barcode	CTN QTY
K2006	Drywall Knife with Scabbard	9341229005294	6

FEATURES:

- Two long lasting tungsten carbide tipped blades.

FCM89	Score & Snap Knife	9341229000497	12
-------	--------------------	---------------	----

PlasterX® Knives - Retractable Blade

FEATURES:

- Foldable compact design with ergonomic profiling.
- Lightweight ABS and Stainless construction with rubber grip pads.
- Push-Button blade release and foldaway stowage safety lock.
- *Counter Display*

KPX71	Folding Utility Knife	9341229009384	6
-------	-----------------------	---------------	---

FEATURES:

- Slimline profile and overlapped nose casing ensuring blade doesn't fold back
- Available in red, yellow or blue hi-visibility.
- *Counter Display*

KS119	Slimline Retractable Utility Knife	9341229005416	36
-------	------------------------------------	---------------	----

FEATURES:

- Heavy Duty Stainless and anodised aluminium design.
- Thumb-wheel blade release.
- 5 Pack blades included.
- *Counter Display*

KTK33	TurboKnife® Utility Knife	9341229009360	6
-------	---------------------------	---------------	---



PlasterX® Knife Blades & Dispensers



- FEATURES:**
- Heavy Duty blades designed specifically for effectively cutting drywall.
 - Precision ground and sharpened to a razor edge, providing maximum sharpness and long life.
 - Corrosion resistance Titanium coated blades.
 - Durable plastic dispensers for tough wearing and to prevent unnecessary wastage.
 - Safety dispensing arm for safer blade presentation. Bulk packs are ideal for storage.

Code	Description	Barcode	CTN QTY
KB010	Blades Dispenser (10 Pack)	9341229011271	10



KB100	Blades Dispenser (100 Pack)	9341229011288	10
-------	-----------------------------	---------------	----



K8810	Blades (100 Pack)	9341229005317	10
-------	-------------------	---------------	----

FatJack® Aluminium Spirit Levels

- FEATURES:**
- Built TradeTuff® with 6061 aluminium aircraft chassis with electro anodised plating.
 - Advanced concentric moulded vials (ACM) calibrated to the highest accuracy of 0.005"/" (0.5mm/m).
 - Ultrasonically-welded vial design eliminates breaks, leaks and fogging.

LX1200	1200mm (48")	9341229009131	10
LX2000	2000mm (80")	9341229009148	10



Aluminium Box Section Levels

- FEATURES:**
- Heavy Duty construction with body ribbing for additional strength.
 - dual milled surfaces for additional accuracy
 - Suitable for vertical and horizontal measuring with Shock-Proof vials.

Code	Description	Barcode	CTN QTY
LI060	600mm (25")	9341229005492	30
LI120	1200mm (48")	9341229005508	10
LI200	2000mm (80")	9341229001654	10



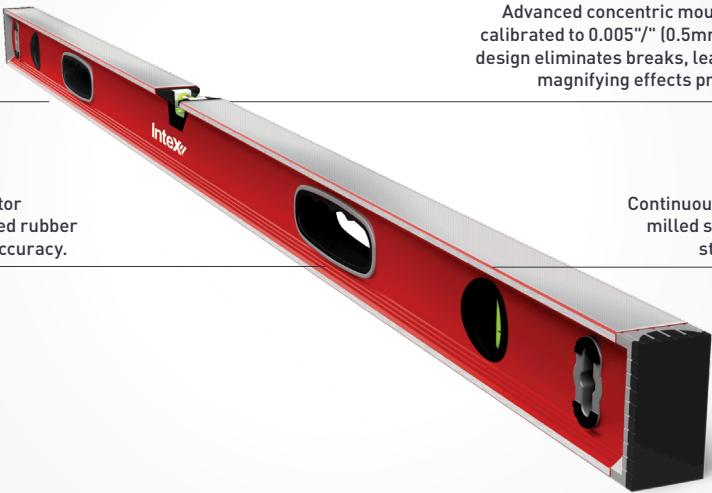
Lasting Precision!

Durability
Built TradeTuff® with 6061 aircraft aluminium chassis and unique electro-anodised plating.

Highest Accuracy
Advanced concentric moulded vials (ACM) individually calibrated to 0.005"/" (0.5mm/m). Ultrasonically-welded design eliminates breaks, leaks and fogging and features magnifying effects providing superior readability.

Comfort & Control
Moulded rubber grips provide operator comfort and shock absorbing moulded rubber end caps preserve high measuring accuracy.

Precision
Continuous edge with double precision milled surface increasing structural strength and surface traction.



PREMIUM PRODUCTS
GUARANTEED
Est. 1989

Product Featured LX1200



PlasterX® Mitre Boxes - Wooden



FEATURES:

- Laminated plywood mitre boxes designed for accurate cutting of cornice.
- All boxes are hand crafted, screwed and glued for extra durability.
- Adjustable mitre boxes feature sliding supports firmly holding cornices whilst cutting.
- Reinforced base with rubber stoppers to stop sliding. *Supplied fully assembled.*

Code	Description	Barcode	CTN QTY
MB579	[45° & 55/75/90mm Cornice]	9341229005553	12

M0579	Dual [90°/135° & 55/75/90mm Cornice]	9341229005621	12
-------	--------------------------------------	---------------	----

M0230	Adj Dual U-Shape [90°/135° & 230mm Cornice]	9341229005614	2
-------	---	---------------	---

MV310	Adj U-Shape [290mm Cornice]	9341229005645	2
-------	-----------------------------	---------------	---

ML370	Adj L-Shape [370mm Cornice]	9341229005591	2
-------	-----------------------------	---------------	---

PlasterX® Mitre Boxes - Plastic



FEATURES:

- Five cornice steps moulded into the box to accommodate twelve different cornice profiles
- Three added cornice types with MRBP510 timber insert.
- Manufactured from weather resistant plastic and lasts three times longer than plywood boxes.

Code	Description	Barcode	CTN QTY
MBP510	[45/90/135° & 55/75/90mm Cornice]	9341229011394	2
MRBP510	Timber Base Insert - Suits MBP510	9341229011868	1

PlasterX® Mitre Boxes - Aluminium

FEATURES:

- Super Heavy Duty construction designed for a lifetime of accurate cornice cutting.
- Weatherproof construction built TradeTuff® with 6061 structural aluminium and high tensile stainless set-screws.
- Threaded base points for bench or stool mounting.

MMX510	[90°/135° & 55/75/90/100mm Cornice]	9341229010373	2
MRB510	Replacement Base - Suits MMX510	9341229010724	1

PlasterX® Power Mixer Rods

FEATURES:

- Mixes plaster, paints, adhesives, grouting, mortar, lime, cement and almost any other liquid material.
- Fully welded steel construction with chrome plating for corrosion resistance.
- 10mm hexagonal shank. 10 to 20kg capacity.

MP205	Universal Mixer Rod - 100 x 600mm	9341229000855	6
-------	-----------------------------------	---------------	---

FEATURES:

- Mixes compounds, plaster, mortar, cement etc.
- Disperses the lumps fast with turbulent four-way counteraction.
- Two adjustable five-fin impellers remove air from mixture.
- Durable steel construction with zinc plating. 10mm hexagonal shank.

MJ130	Jiffler® Adjustable Dual Blade - 130 x 600mm	9341229005577	6
-------	--	---------------	---



Tool Bags & Storage

- FEATURES:**
- Premium suede leather.
 - Two pocket design, with reinforced reversed end gussets.
 - Complete with 50mm wide webbing belt and buckle.

Code	Description	Barcode	CTN QTY
NB972	2 Pocket Leather Nail Bag	9341229001531	10



- FEATURES:**
- Heavy Duty premium suede leather construction.
 - Two pockets, design with steel tape clip, hammer loop, steel hammer holder and three tool pouches.
 - Complete with 50mm wide webbing belt and buckle.

N1252	2 Pocket Leather Nail & Tool Combo Bag	9341229000114	10
-------	--	---------------	----



- FEATURES:**
- Durable and lightweight nylon to minimise fatigue.
 - Four large pockets, knife sheath, tape measure holder, steel hammer holder and loops and six tool pouches.
 - Complete with 50mm wide belt and buckle.

N1266	Nylon Carpenters Tool Rig	9341229000145	5
-------	---------------------------	---------------	---



- FEATURES:**
- Premium full grain oil tanned leather construction.
 - Double stitched and rivet reinforced.
 - Four large pockets, knife sheath, tape measure holder, steel swivel hammer holder, and loops and six tool pouches.
 - Complete with 50mm wide belt and buckle.

N1255	Premium Leather Carpenters Tool Rig	9341229000138	5
-------	-------------------------------------	---------------	---



TBC	Tote Bag	-	-
-----	----------	---	---

Carpenters Pencils



- FEATURES:**
- Traditional chamfered rectangle profile with high-visibility coating and medium grey lead.
 - *Counter Display*

Code	Description	Barcode	CTN QTY
PC148P	Carpenters Pencil & Sharpener <i>(Pack of 10)</i>	9341229000213	48



PlasterX® Hand Sanders

- FEATURES:**
- Unique Quick-Change Sheet Loading.
 - Resists Swirl Marks & Dishing.
 - Durable & Lightweight

SPH22	Large - 280 x 110mm	9341229000008	10
-------	---------------------	---------------	----



- FEATURES:**
- Unique Quick-Change Sheet Loading.
 - Resists Swirl Marks & Dishing.
 - Durable & Lightweight

SPH85	Small - 235 x 80mm	9341229013657	10
-------	--------------------	---------------	----





PlasterX® Pole Sanders

FEATURES:

- Quick and effortless movement providing full range of motion.
- Manufactured with highly resilient foam material and perfect foam thickness, reducing swirl marks and dishing.
- Suitable for use with Intex and other common poles.

Code	Description	Barcode	CTN QTY
SR360	VorteX® Round Pole Sander Head - 225mm (9")	9341229009117	1
SR001	VorteX® Replacement Pad 225mm (9")	9341229009124	20



FEATURES:

- Durable & Lightweight.
- Non-Flip Design.
- Universal Thread.
- Unique Quick-Change Sheet Loading.
- Resists Swirl Marks & Dishing.

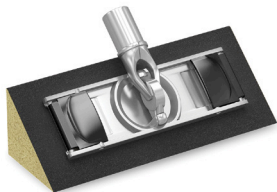
SPP85	360 Pole Sander Small - 240 x 85mm	9341229013640	10
-------	------------------------------------	---------------	----



FEATURES:

- Lightweight aluminium sander head for use with Triangular Sanding Sponge (SPT56)
- Designed for quick and accurate sanding of both the inside and outside of corners simultaneously.
- Suits Large Square Edge Sanding Spounge (SFM49).
- Eliminates gouging produced by traditional sanders.
- Four claws to securely hold sponge.
- No-Flip Design.

SPT82	190 x 60mm	-	5
-------	------------	---	---



Fibreglass Extension Poles

FEATURES:

- Heavy Duty 32mm diameter composite fibreglass exterior and anodised aluminium slider tube construction.
- Rubberised handle grip and durable zinc alloy male thread.

SP764	Telescopic Step-Lock Pole 1200 - 2400mm	9341229006192	12
-------	---	---------------	----



FEATURES:

- Enables many hand held tools to be attached to threaded poles and used at heights.
- Unique pivoting head allows tools to be locked at required angle.

SPU01	Megadaptor® Pole Attachment	9341229001739	20
-------	-----------------------------	---------------	----



PlasterX® Cornice Saws

FEATURES:

- Hardened and tempered premium Japanese SK5 steel blade.
- Long life precision ground induction-hardened 10 point teeth, cut in both forward and reverse directions.
- For cutting cornice, timber, plastic etc.

Code	Description	Barcode	CTN QTY
S6220	MegaGrip® Carbon Steel - 500mm (20")	9341229005928	12
S6224	MegaGrip® Carbon Steel - 600mm (24")	9341229005935	12
S6320	MegaGrip® Carbon Steel - 800mm (32")	9341229005942	12



PlasterX® Rip Saws

FEATURES:

- Heavy Duty construction with special hardened and tempered blade.
- Coarse teeth for fast cutting of openings in plasterboard.
- Can be easily punched through plasterboard with palm of hand.

S9020	MegaGrip® Carbon Steel -380mm (16")	9341229000244	6
-------	-------------------------------------	---------------	---



PlasterX® Keyhole Saws

FEATURES:

- Heavy Duty hardened and tempered steel blade construction.
- Suitable for cutting drywall, wood, masonite, plastic etc.
- Long life precision ground teeth, cuts in both forward and reverse, with razor point for effective penetration.

S1406	FatJack® Carbon Steel 160mm (6")	9341229005867	12
-------	----------------------------------	---------------	----



FEATURES:

- Heavy Duty hardened and tempered steel blade construction.
- Suitable for cutting drywall, wood, masonite, plastic etc.
- Long life precision ground 7 point teeth, cuts in both forward and reverse, with razor point for effective penetration.

S2406	Carbon Steel 160mm (6") Wooden Handle	9341229000015	12
-------	---------------------------------------	---------------	----





PlasterX® Sheet Lifters & Equipment

FEATURES:
- Compact one-piece steel foot frame designed for lifting plasterboard sheets into position before fastening.

Code	Description	Barcode	CTN QTY
SLT45	Troll® Mini Drywall Lifter	9341229006147	6

S9081	Troll® Rolling Drywall Lifter	9341229001487	2
-------	-------------------------------	---------------	---

FEATURES:
- For carrying plasterboard and other sheet materials.
- Angled 350mm (14") handle keeps hands away from sheets for balance.

S3300	Troll® Plastic Drywall Sheet Handler	9341229007847	20
-------	--------------------------------------	---------------	----

FEATURES:
- Telescopic support pole, supports ceiling rosettes, cornice, ceiling sheets, cabinets etc.
- Trigger operation for rapid extension and retraction and pivoting and rotating feet. 30kg capacity.

SP300	MegaJack® 1150 - 2900mm (45 - 114")	9341229001661	10
-------	-------------------------------------	---------------	----

PlasterX® Small Tools



FEATURES:
- One-piece drop forged and tempered solid carbon steel construction.
- Precision taper ground triangular trowel and flexible varying width heel blades.
- For scraping, plastering, repairing damage and filing jobs.

Code	Description	Barcode	CTN QTY
ST012	Carbon Steel - 12mm (1/2")	9341229006260	6
ST018	Carbon Steel - 19mm (3/4")	9341229006277	6
ST025	Carbon Steel - 25mm (1")	9341229006284	6

Sponges

FEATURES:
- Absorbent sponges suited for wiping down cornices etc. Sponges vary in density.

SP01M	Multi-purpose 200 x 100 x 48mm	-	12/48
-------	--------------------------------	---	-------

Staple Guns

FEATURES:
- Durable all steel construction with chrome finish and hardened steel working parts.
- High impact force, featuring smooth squeeze operation and ergonomic handle design.
- Quick jam release button minimises downtime.
Suits Intex, Rapid, Arrow 6, 8, 10, 12 and 14mm staples.

SPX14	Medium Duty 6-8mm - Small	9341229006215	20
SPX34	Heavy Duty 6-14mm - Large	9341229006222	6

SGR14	Rapid Medium Duty 6-8mm - Small	-	5
SGR34	Rapid Heavy Duty 6-14mm - Large	-	5

Paint Scraper

JGP50	General Purpose Scraper 50mm Blade	-	-
JGPBLAD50	Replacement Scraper Blade 50mm (Pack of 5)	-	-
JGP14	Replacement Corner Scraper Blade	-	-



PlasterX® Rasps

FEATURES:

- Compact diecast zinc alloy construction with replaceable hardened and tempered steel blade. Designed to neaten plasterboard edges and form set backs for drywall profile installation. Features Anti-Clogging sharply ground teeth and adjustable blade tension with control knob.

Code	Description	Barcode	CTN QTY
S1111	Block Plane Rasp - 140mm (5.5")	9341229001463	25

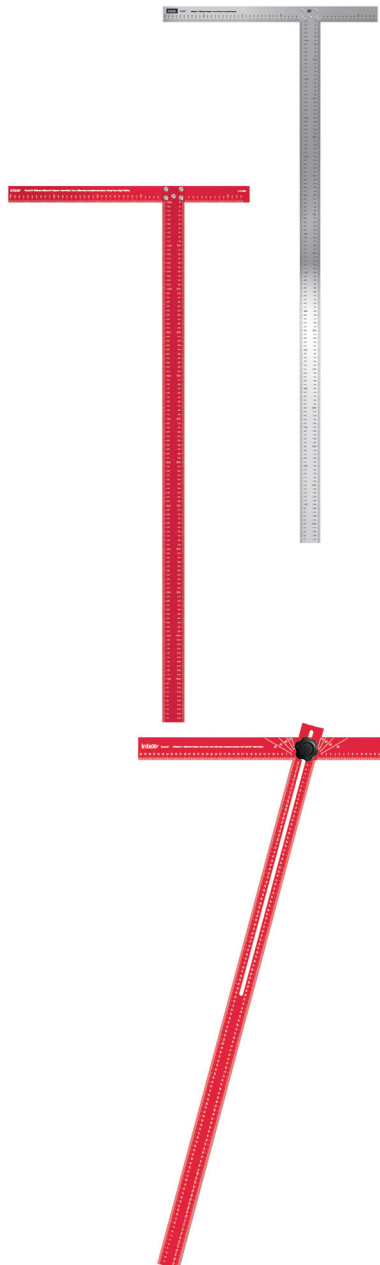


PlasterX® Aluminium T-Squares

FEATURES:

- Anodized aluminium with precise Easy-Read black 2mm metric calibrations.
- Reverse ruled for precise measurements in either direction.

T9027	2mm Calibrations - 1200mm (47")	9341229000367	6
T9028	2mm Calibrations - 1350mm (53")	9341229000374	6



FEATURES:

- Built TradeTuff® with 5mm thick powder coated structural aircraft aluminium.
- High visibility against boards and features precise Easy-Read 2mm metric calibrations.
- Reverse ruled for precise measurements in either direction.

TQ612	5mm Thick 2mm Calibrations - 1200mm (47")	9341229009261	6
TQ613	5mm Thick 2mm Calibrations - 1350mm (53")	9341229009278	6

FEATURES:

- Designed specifically for obtaining, transferring, marking and cutting difficult or odd angles.
- Head slides down track of blade and adjusts to any angle.
- Built TradeTuff® with 6.5mm thick anodised structural aircraft aluminium.
- Easy-Read black 2mm metric calibrations, reverse ruled for precise measurements in either direction.
- Easy transport with Flat-Fold design.

T9031	Adjustable 6mm Thick - 1200mm (47")	9341229007779	6
-------	-------------------------------------	---------------	---

PlasterX® Tape Dispensers & Applicators

FEATURES:

- Metal belt hook provides fast and easy dispensing of paper joint tape for application to flat or corner joints.
- Cutting blade for quick single-handed operation. *Suits up to 150m paper tape rolls.*

Code	Description	Barcode	CTN QTY
T9090	Steel Skeleton Paper Tape Dispenser	9341229006314	6



FEATURES:

- Dispenses fiberglass joint tape for application to flat or corner joints with easy single-handed operation.
- Roller lays down tape firmly without requiring a joint knife and trigger activated blade cuts joint tape.
- Fitted with corner roller for internal corner applications. *Suits up to 90m fiberglass tape rolls.*

TFG50	Fibreglass Applicator - MegaGrip® Handle	9341229000503	12
-------	--	---------------	----



FEATURES:

- Compound control knob adjusts coat thickness allowing for accurate and consistent coat of bedding compound.
- Stainless gear wheels grip and dispense tape evenly avoiding folds and wrinkles.
- High capacity holding up to 2.5kg of compound. Suited for joint tape rolls up to 150m (500ft).

TX650	Taping Box	9341229001760	6
-------	------------	---------------	---





PlasterX® Tape Measures

FEATURES:

- Impact resistant ABS case design. Rubber over-mould provides positive traction in palm.
- Easy-Access thumb lock controls blade return and locks blade in stand-out position.
- Yellow nylon coated blade for lasting protection with Easy-Read bold metric calibrations.
- Comfortable finger grip ensures sturdy grip.
- Triple reinforced riveted tip.
- *Counter Display*

Code	Description	Barcode	CTN QTY
T8025	Rubber Back - 8m x 25mm	9341229006307	10
T1025	Rubber Back - 10m x 25mm	9341229006291	10



FEATURES:

- Impact resistant ABS case design. Rubber over-mould provides positive traction in palm.
- Easy-Access thumb lock controls blade return and locks blade in stand-out position.
- Yellow nylon coated blade for lasting protection with Easy-Read bold metric calibrations.
- Finger stop button controls blade return speed and is ideal for quick sequence measurements..
- Triple reinforced riveted tip with double magnets.
- *Counter Display*

TMT25	Magnetic MegaGrip® - 10m x 25mm	9341229006505	10
-------	---------------------------------	---------------	----

FEATURES:

- Impact resistant ABS case design. Rubber over-mould provides positive traction in palm.
- Easy-Access thumb lock controls blade return and locks blade in stand-out position.
- White nylon coated Anti-Scratch blade for lasting protection with Easy-Read bold metric calibrations.
- Finger stop button controls blade return speed and is ideal for quick sequence measurements..
- Triple reinforced riveted tip with double magnets.
- *Counter Display*

TFJ32	FatJack® MegaGrip® - 10m x 32mm	9341229006345	8
-------	---------------------------------	---------------	---

PlasterX® Taping Knives - MegaGrip® Series

FEATURES:

- Tough polypropylene core and ergonomic MegaGrip® moulded handles.
- Lightweight aluminium mounting with no raised ridges or rivets.
- Blade features perfectly controlled flexibility for applying, feathering and knockdown texturing.

TKM08	Blue Steel - 200mm (8")	9341229001500	12
TKM10	Blue Steel - 250mm (10")	9341229000893	12
TKM12	Blue Steel - 300mm (12")	9341229001517	12
TKM14	Blue Steel - 350mm (14")	9341229001524	12

TKM08S	Stainless - 200mm (8")	9341229000886	12
TKM10S	Stainless - 250mm (10")	9341229000909	12
TKM12S	Stainless - 300mm (12")	9341229000916	12
TKM14S	Stainless - 350mm (14")	9341229011813	12
TKM16S	Stainless - 400mm (16")	9341229007892	12



PlasterX® Taping Knives - Wooden Series

FEATURES:

- Premium taping knives with to comfortable contoured hardwood handles.
- Lightweight aluminium mounting with no raised ridges or rivets, preventing compound build up and cleaning easy.
- Perfectly controlled flexible blade for applying, feathering and knockdown texturing.

Code	Description	Barcode	CTN QTY
TKW08S	Stainless - 200mm (8")	9341229006468	12
TKW10S	Stainless - 250mm (10")	9341229006482	12
TKW12S	Stainless - 300mm (12")	9341229000923	12

FEATURES:

- Premium taping knives with to long 450mm (18") comfortable contoured hardwood handles.
- Lightweight aluminium mounting with no raised ridges or rivets, preventing compound build up and cleaning easy.
- Perfectly controlled flexible blade for applying, feathering and knockdown texturing.

TJL10	Blue Steel - 250mm (10")	9341229006420	6
TJL12	Blue Steel - 300mm (12")	9341229006437	6
TJL14	Blue Steel - 350mm (14")	9341229006444	6



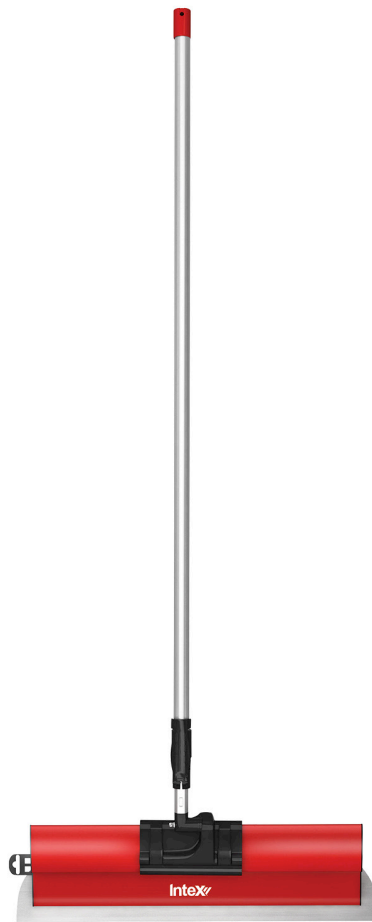
PlasterX® Drywall Skimmers

FEATURES:

Increases meterage output and enhance quality of finish, whilst significantly reducing harmful effects of fatigue and repetitive strain injury (RSI). Manufactured with ultra-fine highest grade INOX German Stainless, the extremely flexible blade and precise fulcrum point allows up to ten times more contact area with surface, resulting in extremely smooth surfaces. Ergonomic handle design exerts pressure on blade without finger pressure or wrist strain, and rounded edges and tangential angles provide a practically groove-less filling surface. Well suited for filling large surfaces with reduced loss of material. Operated with one or two hands and with or without telescopic handle. Includes blade protector guard.

SDS025	Stainless - 250mm (10")	9341229017600	6
SDS045	Stainless - 450mm (18")	9341229017617	6
SDS060	Stainless - 600mm (23")	9341229017624	6
SDS080	Stainless - 800mm (31")	9341229017631	6
SDS100	Stainless - 1000mm (39")	9341229017594	6

SDH900	Telescopic Handle - 915mm -1330mm (36"-72")	9341229017587	1
--------	---	---------------	---





Aviation Snips

FEATURES:

- Designed to cut 1.2mm cold rolled steel and 0.7mm Stainless.
- Induction hardened blades with serrated edges.
- Rubberised MegaGrip® Handles.
- Drop forged AISI-6150 Chrome Molybdenum Alloy Steel jaws

Code	Description	Barcode	CTN QTY
TA103	Straight Cut - Yellow	9341229000879	6
TA102	Right Cut - Green	9341229007021	6
TA101	Left Cut - Red	9341229007014	6
TWM3R	Wiss Straight Cut - Yellow	-	6



Vise Grips

FEATURES:

- High-grade heat-treated alloy steel construction.
- Adjustable pressure and wide opening jaws providing clamping versatility.
- Trigger release provides maximum locking force.

VC16R	Locking C-Clamp Vise Grip	9341229015637	5
-------	---------------------------	---------------	---



PlasterX® Trowels - Plastic

FEATURES:

- Italian style plastic float, ideal for texture coating and rendering.

T827P	Flat Plastic - 405mm (16")	9341229001494	12
-------	----------------------------	---------------	----



PlasterX® Professional Trowels - MegaGrip®

FEATURES:

- Well balanced design with ergonomic MegaGrip® cushioned handles.
- Strong lightweight construction with tempered precision ground blades.
- Controlled flexibility for applying, feathering and knockdown texturing.

TPF200	Flat Carbon Steel - 200mm (8")	9341229000701	12
TPC200	Curved Carbon Steel - 200mm (8")	9341229000442	12
TPF280	Flat Carbon Steel - 280mm (12")	9341229000459	12
TPC280	Curved Carbon Steel - 280mm (12")	9341229000466	12
TPF355	Flat Carbon Steel - 355mm (14")	9341229006512	6
TPF455	Flat Carbon Steel - 455mm (18")	9341229000480	6
TPF500	Flat Carbon Steel - 500mm (20")	9341229006529	6
TPF600	Flat Carbon Steel - 600mm (24")	9341229006536	6



TPS200	Flat Stainless - 200mm (8")	9341229006543	12
TPS280	Flat Stainless - 280mm (12")	9341229000473	12
TPS455	Flat Stainless - 455mm (18")	9341229007441	6

PlasterX® Stainless Trowels - Heritage



FEATURES:

- Hardened and tempered blade.
- Underside transverse ground providing a smooth surface for superior finishing.
- INOX Stainless contains chromium with 1% molybdenum, for strength, flexibility, wear resistance.
- Hand finished chamfered edges, pre-broken in shape and polish immediately ensure optimum finishing.
- Lightweight sand blasted diecast aluminium mounting is fixed with medium 10 Stainless welded bracket studs.
- Gold blade features additional heat treatment, reducing tensions in the steel making the blade even more durable.

Code	Description	Barcode	CTN QTY
TMG280	Gold-Plated MegaGrip® Handle - 280mm (12")	9341229017679	8
TMG355	Gold-Plated MegaGrip® Handle - 355mm (14")	9341229017730	8
TMG405	Gold-Plated MegaGrip® Handle - 405mm (16")	9341229017761	8



TCG280	Gold-Plated Cork Handle - 280mm (12")	9341229017686	8
TCG355	Gold-Plated Cork Handle - 355mm (14")	9341229017747	8
TCG405	Gold-Plated Cork Handle - 405mm (16")	9341229017778	8



TLG280	Gold-Plated Leather Handle - 280mm (12")	9341229017693	8
TLG355	Gold-Plated Leather Handle - 355mm (14")	9341229017754	8
TLG405	Gold-Plated Leather Handle - 405mm (16")	9341229017785	8



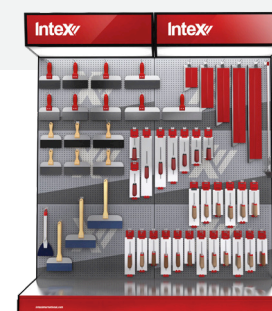
PlasterX® MegaFlex™ Trowels - Heritage



FEATURES:

- Hardened and tempered blade.
- Underside transverse ground providing a smooth surface for superior finishing.
- INOX Stainless contains chromium with 1% molybdenum, for strength, flexibility, wear resistance.
- Hand finished chamfered edges, pre-broken in shape and polish immediately ensure optimum finishing.
- Lightweight sand blasted diecast aluminium mounting is fixed with medium 10 Stainless welded bracket studs.

TCS300F	Cork Handle - 300mm (12")	9341229019475	8
TCS360F	Cork Handle - 360mm (14")	9341229019482	8



Hand Tool Display Stands



Lumo® LED Worklights

- FEATURES:**
- USB Charger.
 - IK07 Impact Rating.
 - IP20 Ingress Protection Rating.
 - AS/NZS CISPR 15-2017

Code	Description	Barcode	CTN QTY
SLB01	Cordless MagnetPen 90/70 Lumens (1W)	9341229019994	40



- FEATURES:**
- USB Charger.
 - IK09 Rating.
 - IP65 Rating.
 - Adjustable Brightness.
 - AS/NZS CISPR 15-2017

SLB02	Cordless Headlight 250 Lumens (2.5W)	9341229018447	40
-------	--------------------------------------	---------------	----



- FEATURES:**
- USB Charger.
 - IK09 Impact Rating.
 - IP65 Ingress Protection Rating.
 - Adjustable Brightness.
 - AS/NZS CISPR 15-2017

SLB10	Cordless Magnetlight 1000 Lumens (10W)	9341229018584	16
-------	--	---------------	----



- FEATURES:**
- Heavy Duty steel construction for use on the work site
 - Spanning swivel arm mounts four lights with 360° locking positions.
 - Compact folding design for practical handling and storage.

STR21	Telescopic Tripod 1100 - 2100mm (43 - 83")	9341229018454	2
-------	--	---------------	---

Lumo® LED Worklights

- FEATURES:**
- USB Output.
 - IK07 Impact Rating.
 - IP65 Ingress Protection Rating.
 - AS/NZS 60598.2.5:2015, AS/NZS 61347.1:2016+A1:2018, AS 61347.2.13:2018, AS/NZS 60598.1:2017, AS 60598.2.4:2019

Code	Description	Barcode	CTN QTY
SLB2500	Cordless 2500 Lumens (25W)	9341229016900	4



- FEATURES:**
- USB Output.
 - IK07 Impact Rating.
 - IP65 Ingress Protection Rating.
 - [Speaker Connectivity](#)
 - Floodlight Compatible
 - AS/NZS 60598.2.5:2015, AS/NZS 61347.1:2016+A1:2018, AS 61347.2.13:2018, AS/NZS 60598.1:2017, AS 60598.2.4:2019

SLB4000	Cordless 4000 Lumens (40W)	9341229016917	4
---------	----------------------------	---------------	---



- FEATURES:**
- Power Output (230 -240V 1600W).
 - IK07 Impact Rating.
 - IP54 Ingress Protection Rating.
 - [Speaker Connectivity](#)
 - Floodlight Compatible
 - AS/NZS 60598.2.5:2015, AS/NZS 61347.1:2016+A1:2018, AS 61347.2.13:2018

SLP4000	Corded 4000 Lumens (40W)	9341229013497	4
---------	--------------------------	---------------	---



- FEATURES:**
- Power Output (230 -240V 1600W).
 - IK07 Impact Rating.
 - IP54 Ingress Protection Rating.
 - Floodlight Compatible
 - AS/NZS 60598.2.5:2015, AS/NZS 61347.1:2016+A1:2018, AS 61347.2.13:2018

SLP6000	Corded 6000 Lumens (60W)	9341229005485	4
---------	--------------------------	---------------	---



- FEATURES:**
- Moulded handle provides convenient carry point.
 - Built TradeTuff® Impact-resistant lightweight housing (IK07 Impact Rating)
 - Compatible with SLB4000, SLP4000 & SLP6000

SLS360	360° Floodlight Attachment	9341229009353	4
--------	----------------------------	---------------	---





Hi-Stride® Stilts - Single Pole

- FEATURES:**
- Allows operators to walk and work at an elevated height without trestles, planks or scaffolding.
 - Built TradeTuff® with structural aluminium.
 - Telescopic height adjusts to suit wearers height.
 - Pivoting soles provide steady balance with dimpled rubberised foot pads for traction.
 - Unique foot and leg adjustments to suit size and walking styles.
 - Durable straps with metal buckles securely hold wearers feet and legs in place.

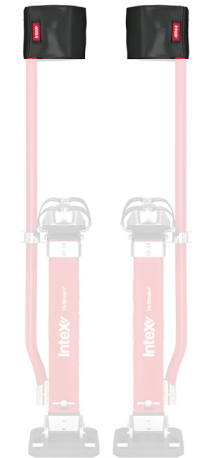
Code	Description	Barcode	CTN QTY
SHA1523	Small Aluminium 350 - 550mm	9341229001685	1
SHA1830	Medium Aluminium 450 - 750mm	9341229001692	1
SHA2440	Large Aluminium 600 - 1000mm	9341229001708	1



Hi-Stride® Stilts - Dual Pole

- FEATURES:**
- Allows operators to walk and work at an elevated height without trestles, planks or scaffolding.
 - Dual pole design increases wearers leg support providing enhanced user comfort and greater stability.
 - Built TradeTuff® with structural magnesium for extra lightweight, assisting fatigue-free leg and body posture.
 - Telescopic height adjusts to suit wearers height.
 - Pivoting soles provide steady balance with dimpled rubberised foot pads for traction.
 - Unique foot and leg adjustments to suit size and walking styles.
 - Durable straps with metal buckles securely hold wearers feet and legs in place.

SHX1830	Medium Magnesium 450 - 760mm	9341229009704	1
SHX2440	Large Magnesium 610 - 1015mm	9341229009711	1



Hi-Stride® Stilts - Leg Bands

- FEATURES:**
- Provides extra leg relief while operating stilts.
 - Durable nylon construction and maximum comfort with foam padding.
 - Fully adjustable and suited for all types of stilts.

HSP400	Ergonomic Stilt Leg Bands (Pair)	9341229010366	25
--------	----------------------------------	---------------	----