

HARMER

BUILDING DRAINAGE

HARMER MODULOCK ROOF CHANNEL DRAINS



ALUMASC

WATER MANAGEMENT SOLUTIONS





AlumasC is a UK-based supplier of premium building products. The group’s core business is the provision of sustainable building products, enabling the efficient management of energy and water in the built environment.

AlumasC Water Management Solutions provides ‘Rain to Drain’ solutions, that set the standard for urban water management. The Range includes: **Skyline** Fascias, Soffits & Copings; **AlumasC Rainwater** Gutters & Downpipes; **Harmer** Building Drainage; **Gatic** Civil Drainage & Access Covers and **Wade** Building Drainage.

Under the AWMS banner, customers benefit from rainwater and drainage products that capture, retain, and control an effective flow of rainwater around buildings, both internally and externally.



Features & Benefits	4
Modulock Roof Channel Grating options	6
Modulock Roof Channels 130mm	8
Modulock Roof Channel Gratings 130mm	9
Modulock Roof Channels 200mm	10
Modulock Roof Channel Gratings 200mm	11
Gratings, Accessories & Maintenance Units	15
Terrace Slot Channels	16
Channels Installation	18

Harmer Modulock Channel Drains

The advanced, linear, steel drainage ranges are for use within a raised deck structure. Combining threshold drainage with the level access requirements of Part M, the channel drains can be used independently, or with Harmer Modulock Raised Deck Supports.

Walkable and Wheelchair Compliant

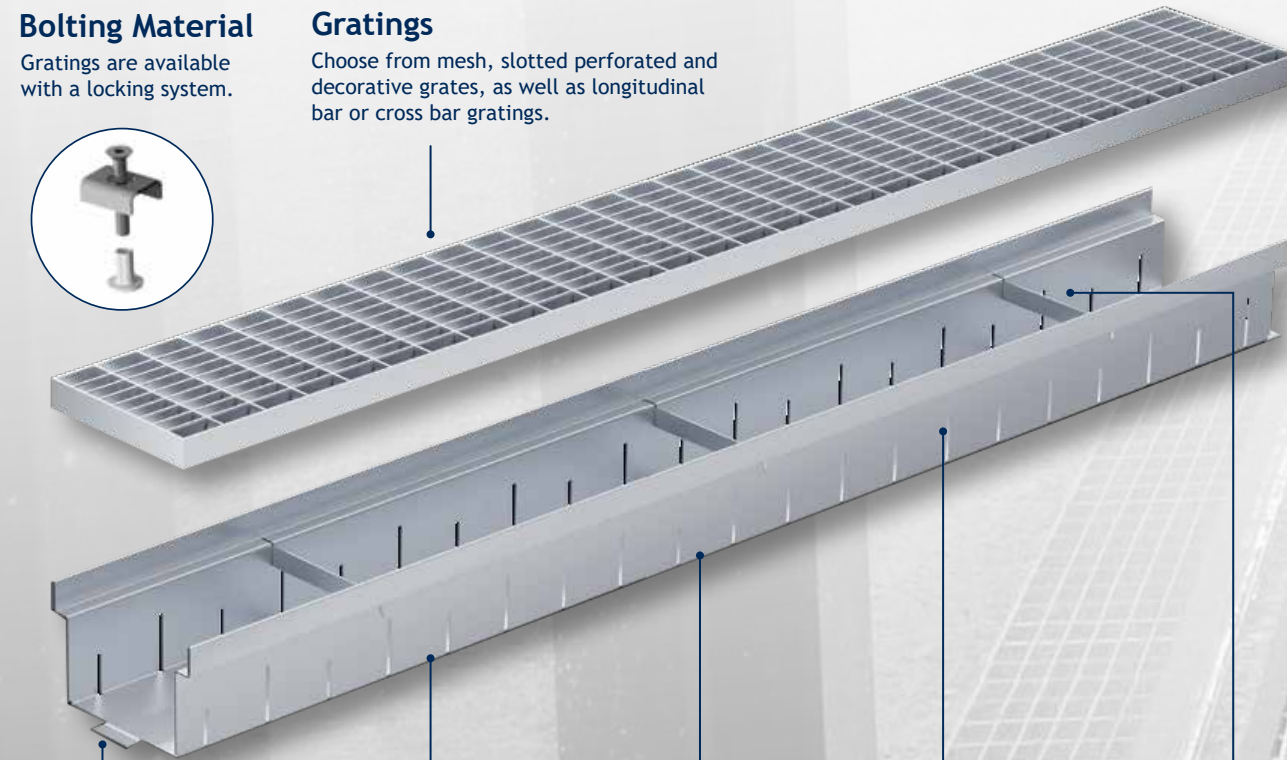
Bolting Material

Gratings are available with a locking system.



Gratings

Choose from mesh, slotted perforated and decorative grates, as well as longitudinal bar or cross bar gratings.



Connection tabs

tongue & groove connection tabs keep the individual segments securely connected.

Fixed element heights

Available in different heights conforming to different standards per channel width.

Two-sided perforation

Accumulating precipitation is discharged on the sealing level through the perforation.

Material

The channels are made of galvanised steel or stainless steel.

Strengthening bars

Strengthening bars ensure a stable form during installation, preventing the channel walls from being pressed together or apart.

Harmer Modulock Channel Drain ranges, are highly versatile linear drainage systems. They provide the ideal level access drainage solution, stemming and re-directing rainwater run-off and percolation at building perimeters, access thresholds and points of entry or exit.

- Highly stable yet lightweight steel channel body
- Channel elements in widths 130mm & 200mm
- Element lengths 500mm, 1000mm & 2000mm
- Minimal height, optimal drainage performance
- Height-adjustable for great flexibility with a range of accessories
- Ideal for flat roofs, terraces, balconies and more

Adjustable Height, Constant Performance

Versatility is the 'plus'

Slot channel elements can be adapted to any variation of height requirements, using adjustable feet. This has numerous application advantages.

Application areas

Individually height-adjustable, thus particularly suitable for compensating building construction tolerances, sloping substructures and terrace coverings laid on pedestals.

Material

The channels are made of galvanised mild steel or stainless steel.

Open channel bottom

Maximum, immediate rainwater discharge is possible, yielding optimal protection against splashing and driving rain.

Material thickness

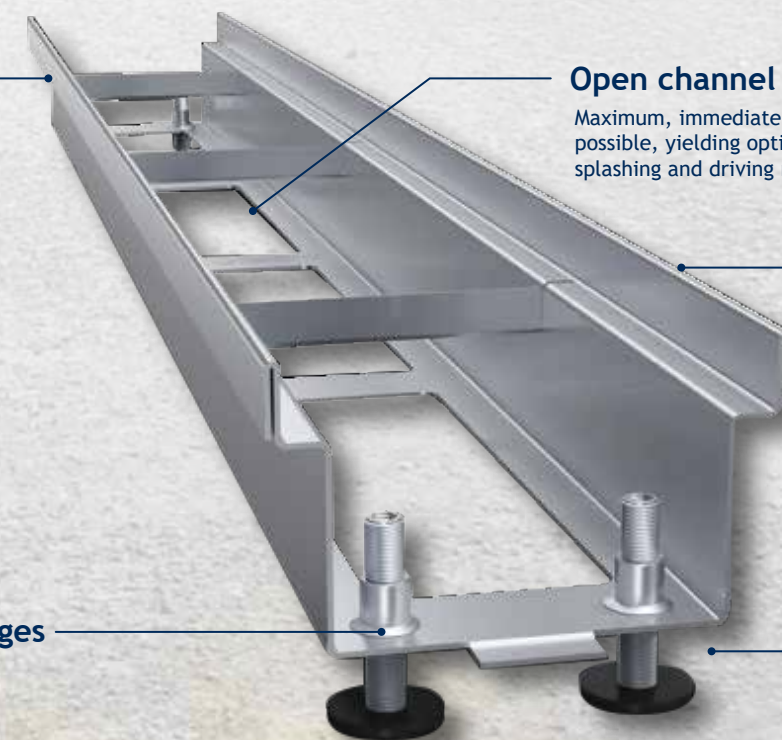
A material thickness of 1.5mm gives additional stability and resistance to deformation.

Adjustment ranges

The adjustment ranges are predefined. After installation, a hexagon socket bolt can be turned from above to make adjustments.

Adjustable feet

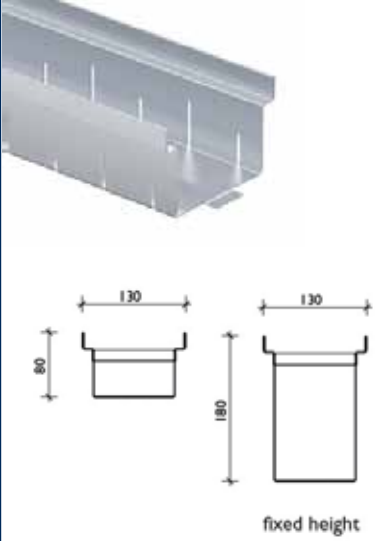
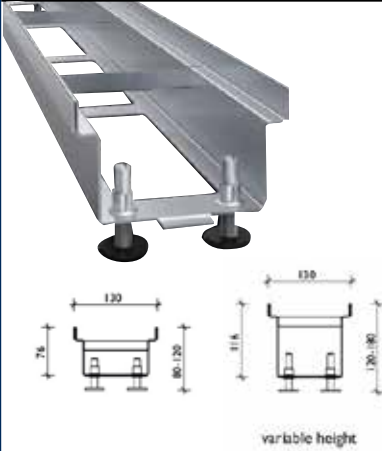
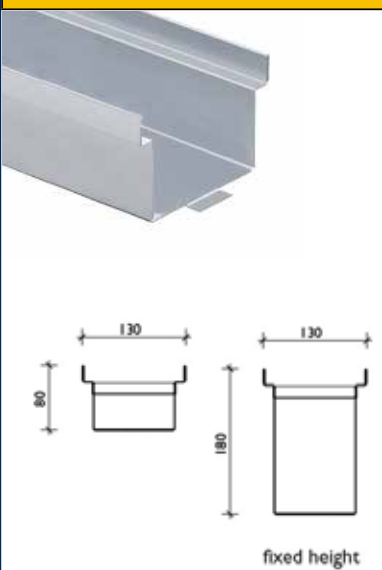
Either four or six levelling feet made of galvanised or stainless steel are factory-installed, depending on the system and element length.






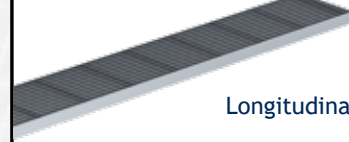
Modulock Roof Channels Grating Options



Modulock Roof Channels 130mm

Description	Code Galvanised	Code Stainless Steel	Length mm	Height mm	Weight kg
PERFORATED CHANNEL - FIXED HEIGHT					
	MD21013200	MD21013300	500	80	1.3
	MD21013201	MD21013301	1000	80	2.6
	MD21013202	MD21013302	2000	80	5.0
	MD21013211	MD21013311	1000	180	4.1
	MD21013212	MD21013312	2000	180	8.1
OPEN BOTTOM CHANNEL - VARIABLE HEIGHT					
	MD21013231	MD21013331	1000	80 - 120	3.0
	MD21013232	MD21013332	2000	80 - 120	6.1
	MD21013233	MD21013333	1000	120 - 180	3.9
	MD21013234	MD21013334	2000	120 - 180	8.0
UNPERFORATED CHANNEL - FIXED HEIGHT					
	MD21013251	MD21013351	1000	80	2.6
	MD21013252	MD21013352	2000	80	5.1
	MD21013261	MD21013361	1000	180	4.1
	MD21013262	MD21013362	2000	180	8.3

Modulock Roof Channels 130mm Gratings

Description	Code Galvanised	Code Stainless Steel	Length mm	Slot / Mesh Width mm	Weight kg
GRATINGS					
	MD24513201	MD24513301	1000	MW 30/10	2.5
	MD24513202	MD24513302	500	MW 30/10	1.3
	MD24513205	MD24513305	1000	Ø6	1.6
	MD24513206	MD24513306	500	Ø6	0.8
	MD24513203	MD24513303	1000	SW 9/85	1.5
	MD24513204	MD24513304	500	SW 9/85	0.8
	MD24513207	MD24513307	1000	bar distance 10	3.9
	MD24513208	MD24513308	500	bar distance 10	2.0
	MD24513209	MD24513309	1000	bar distance 10	4.2
	MD24513210	MD24513310	500	bar distance 10	2.1
	MD24513211	MD24513311	1000		1.4
	MD24513212	MD24513312	500		0.7

Modulock Roof Channels 130mm Accessories


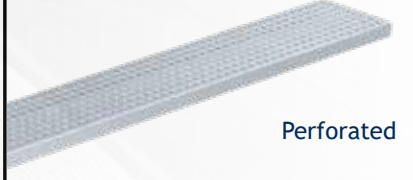

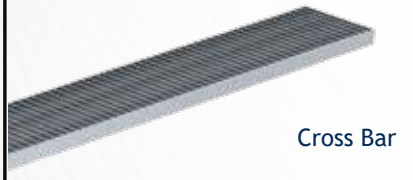
Description	Code Galvanised	Code Stainless Steel	Length mm	Height mm	Weight kg
ACCESSORIES					
	MD24913201	MD24913301	1000	80	2.6
	MD24913202	MD24913302	1000	180	4.3
	MD24913211	MD24913311	N/A	50	2.0
	MD24913221	MD24913321	N/A	80	0.1
	MD24913222	MD24913322	N/A	180	0.1
 <p>Locking set for mesh gratings and longitudinal bar gratings, consisting of clip, bolt and sleeve nut (2 pieces per m)</p>	24900010	24900011	N/A	N/A	0.1



Modulock Roof Channels 200mm

Description	Code Galvanised	Code Stainless Steel	Length mm	Height mm	Weight kg
PERFORATED CHANNEL - FIXED HEIGHT					
	MD21020200	MD21020300	500	50	1.3
	MD21020201	MD21020301	1000	50	2.6
	MD21020202	MD21020302	2000	50	5.3
	MD21020211	MD21020311	1000	90	3.3
	MD21020212	MD21020312	2000	90	6.6
OPEN BOTTOM CHANNEL - VARIABLE HEIGHT					
	MD21020221	MD21020321	1000	50 - 70	2.4
	MD21020222	MD21020322	2000	50 - 70	4.9
	MD21020223	MD21020323	1000	70 - 100	3.0
	MD21020224	MD21020324	2000	70 - 100	5.9
UNPERFORATED CHANNEL - FIXED HEIGHT					
	MD21020231	MD21020331	1000	50	2.6
	MD21020232	MD21020332	2000	50	5.3
	MD21020241	MD21020341	1000	90	3.4
	MD21020242	MD21020342	2000	90	6.7

Modulock Roof Channels 200mm Gratings

Description	Code Galvanised	Code Stainless Steel	Length mm	Slot / Mesh Width mm	Weight kg
GRATINGS - FIXED HEIGHT					
 Mesh	MD24520201	MD24520301	1000	MW 30/10	3.8
	MD24520202	MD24520302	500	MW 30/10	2.0
 Perforated	MD24520207	MD24520307	1000	Ø6	3.5
	MD24520208	MD24520308	500	Ø6	1.7
 Longitudinal bar	MD24520203	MD24520303	1000	bar distance 10	6.4
	MD24520204	MD24520304	500	bar distance 10	3.2
 Cross Bar	MD24520205	MD24520305	1000	bar distance 10	8.8
	MD24520206	MD24520306	500	bar distance 10	4.4

Modulock Roof Channels 200mm Accessories

Description	Code Galvanised	Code Stainless Steel	Length mm	Height mm	Weight kg
ACCESSORIES					
	MD24920201	MD24920301	1000	50	2.8
	MD24920202	MD24920302	1000	90	3.5
	MD24913211	MD24913311	N/A	50	2.0
	MD24920221	MD24920321	N/A	50	0.1
	MD24920222	MD24920322	N/A	90	0.1
 <div>Locking set for mesh gratings and longitudinal bar gratings, strengthening bar incl. sleeve nut, clip and bolt (2 pieces per m)</div>	24900012	24900013	N/A	N/A	0.1

Modulock Roof Channels Maintenance Units - All sizes

Description	Code Galvanised	Code Stainless Steel	Length mm	Height mm	Weight kg
MAINTENANCE ACCESS UNITS					
	MD24925200	MD24925300	250 x 250	50	1.9
	MD24925201	MD24925301	250 x 250	70 - 100	2.6
	MD24925202	MD24925302	250 x 250	100 - 160	2.9
	MD24940200	MD24940300	400 x 400	50	2.4
	MD24940201	MD24940301	400 x 400	70 - 100	3.3
	MD24940202	MD24940302	400 x 400	100 - 160	4.1
MAINTENANCE ACCESS UNITS - GRATE TOPS					
	MD24525200	MD24525300	242 x 242	20	1.0
	MD24540200	MD24540300	392 x 392	20	2.5



Harmer Terrace Slot Channels

True performance doesn't always have to be obvious. Harmer Terrace Slot Channels have a slot of only 18mm, blending seamlessly into the overall architecture, with no loss of drainage capacity.

Terrace slot channels, Drainage on two levels

Terrace slot channels are excellent for terraces, roof terraces and garden drainage. They offer a big advantage by allowing drainage on two levels: the flooring and the underlying floor plates.

Construction time barrier

The construction time barrier should remain in the terrace slot channels during the entire construction period to avoid de-forming and to keep the system clean.



Slot inlay

A grate cover keeps out solid materials, ensuring clean and proper flow through the channel line. The cover can be easily removed to clean the channel body.



Slot width

A narrow slot width of only 18 mm renders these drainage elements barely visible.

Front tabs

Perfectly interlocking front tabs ensure a secure connection between individual segments.

Two - sided perforation

Drainage possible on two water bearing levels.

Material

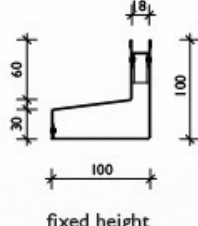
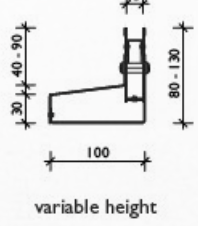
The channels are made of stainless steel.

Height adjustment

Harmer Terrace Slot channels are height-adjustable, allowing a perfect fit in case of slope differences between floor covering and floor plate.

- Highly stable yet lightweight stainless steel channel body
- High drainage performance with 18mm slot width
- Blends in well with the overall architectural aesthetics thanks to great flexibility and an extremely slim design
- Many variations and a range of accessories
- Easy-to-clean channel body with removable cover and maintenance units

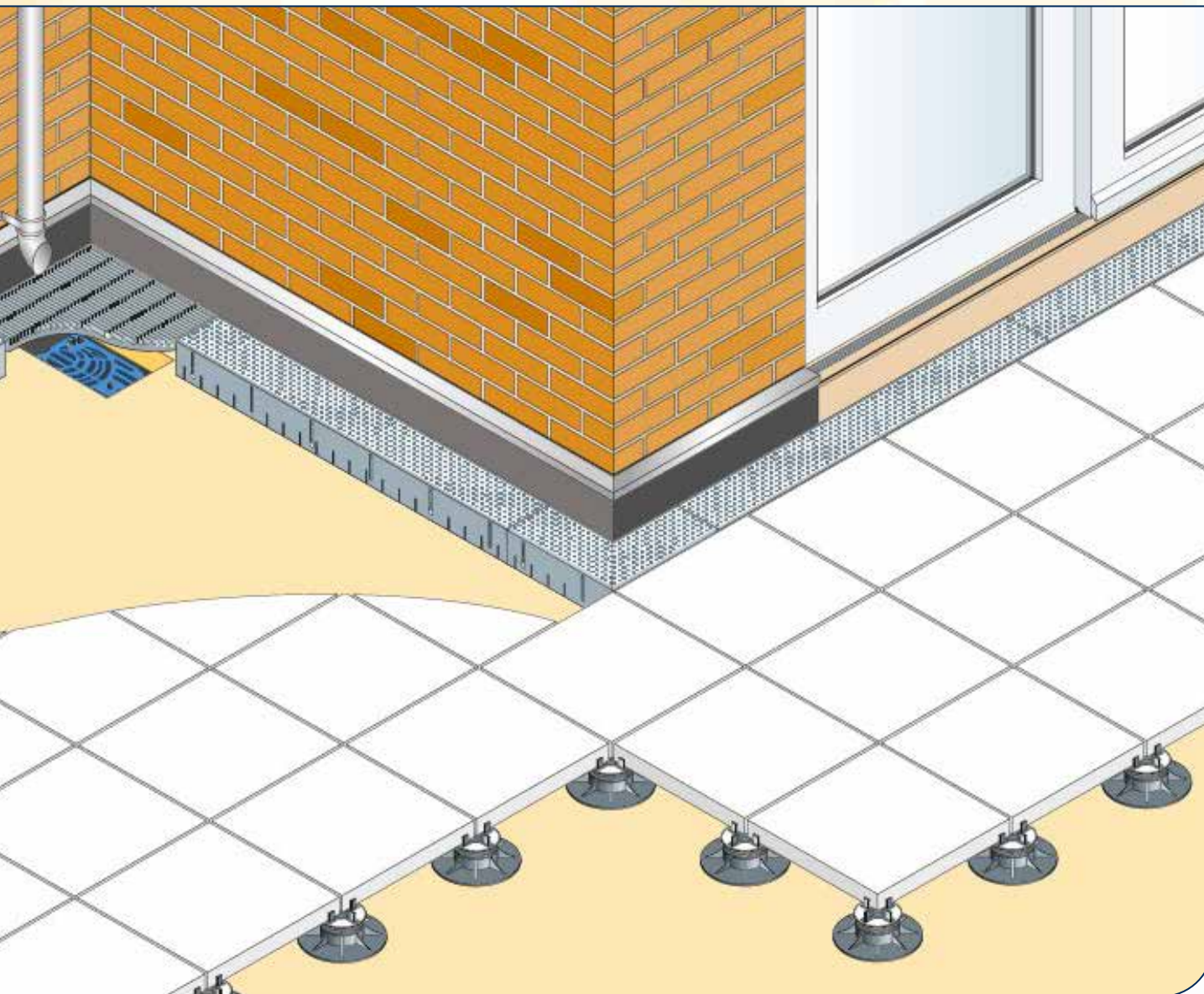
Channel body with slot width 18 - Perforated / Unperforated

Description	Length mm	Height mm	Weight kg	Code Stainless Steel	Price £ Stainless Steel
TERRACE SLOT CHANNELS					
1m Perforated Variable		80 - 130	3.0	MD38030	219.02
1m Perforated Fixed		100	3.2	MD38020	115.37
1m Closed Variable		80 - 130	3.0	MD38010	215.06
1m Closed Fixed		100	3.2	MD38000	113.16

Accessories for Terrace Slot

Description		Length mm	Height mm	Weight kg	Code Stainless Steel	Price £ Stainless Steel	
CORNER CONNECTIONS							
External 200 x 200		Adjustable	200	80 - 130	1.2	MD38050	154.61
Internal 200 x 200		Adjustable	200	80 - 130	1.4	MD38055	170.41
MAINTENANCE UNIT WITH OUTLET							
500 x 100		500	81 - 130	3.0	MD38040	179.49	
END PLATES							
Left & right hand		Adjustable	N/A	80 - 130	0.1	MD38060	25.63

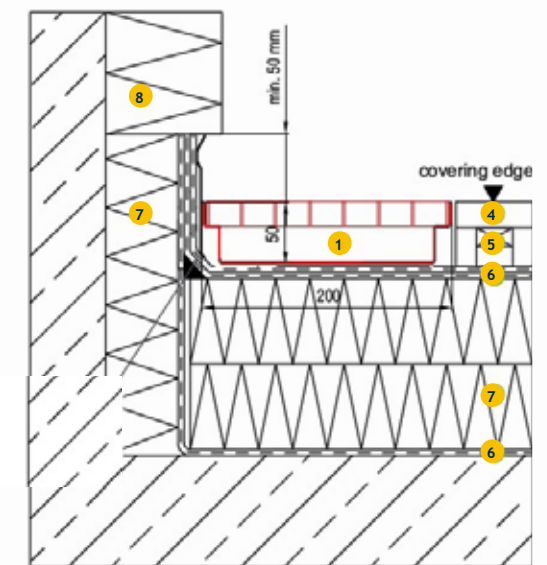
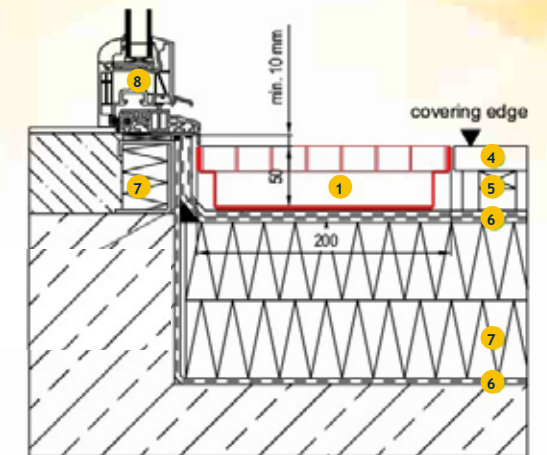
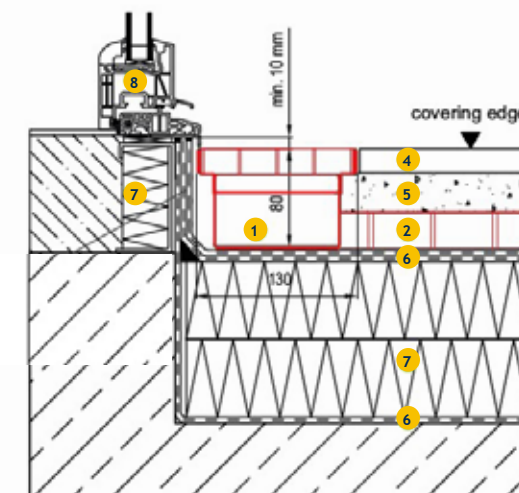
Harmer Channels Installation



- | | |
|--|--|
| 1 Modulock roof channel
fixed height 130mm or 200mm | 4 Flooring/floor structure
such as terrace plates/planks, etc. |
| 2 Branch canal to outlet | 5 Construction according to planner
such as gravel bed or drainage concrete |
| 3 Gully top element with
mesh grating | 6 Sealing film |
| | 7 Thermal insulation |
| | 8 Door or facade construction |

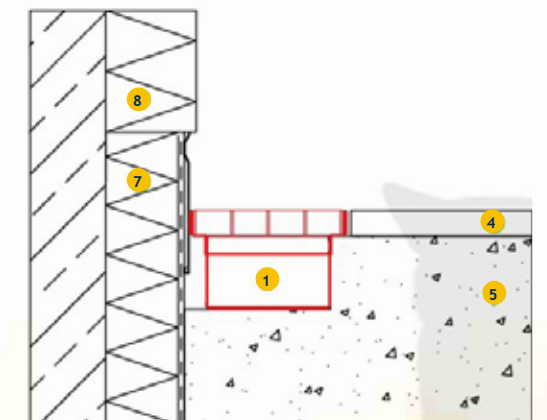
Installation in areas without ground contact

For installation of a Harmer Modulock Channel, the connection height in the door area can be reduced from 10cm to 1cm. The sealing heights specified must be adhered to during installation. The channel with branch canal can even be used at low installation heights, and is recommended in case of a larger distance to the next roof outlet (top attachment element).



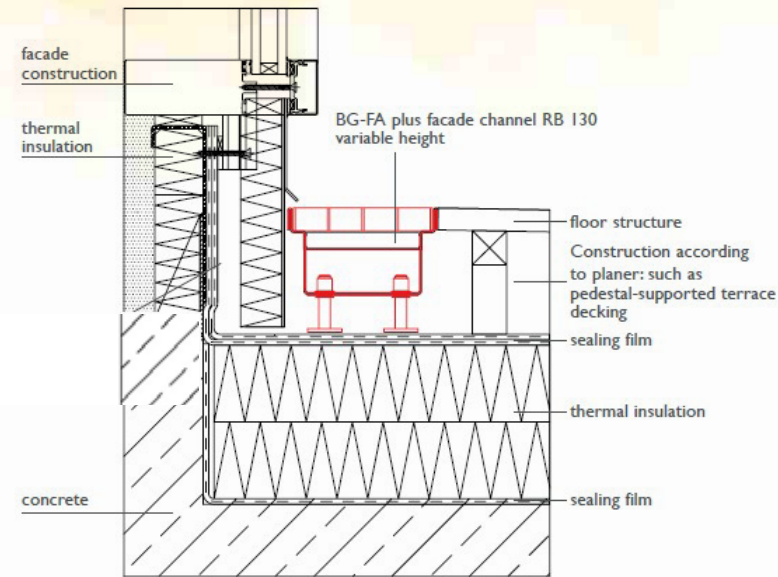
Installation in areas with ground contact

Laid in a gravel bed or single-grained concrete, channels with two-sided perforation conduct accumulating rainwater into the ground below to seep off. Channels with a closed channel body are suitable for controlled rainwater drainage, and can be connected to the surface drainage system.



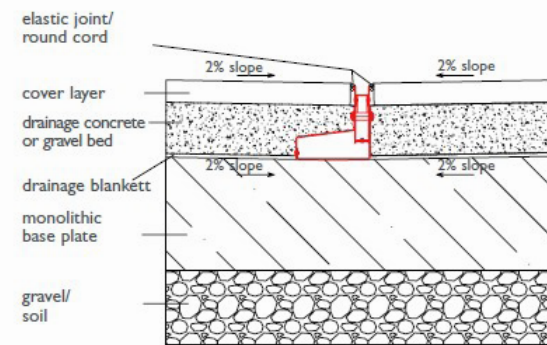
Modulock Roof Channels

Harmer channels offer easy adjustable installation. This open-bottomed channel is factory-made with adjustable feet and hexagon socket allowing adjustment from above even after installation. Height flexibility allows precise adjustment for gradient differences and building construction tolerances.



Terrace Slot Channels

Slot Channels are primarily used for terrace and garden drainage. These channels offer a big advantage by allowing drainage on two levels: the floor covering and the underlying floor plates. Surface water is discharged through the narrow slot and with slot inlay. Penetrating seepage water is captured in the slotted channel body. Height variability allows precise adjustment for level and gradient differences between floor covering and floor plates.





HARMER[®]

BUILDING DRAINAGE

Technical Support

+44 (0)1536 383 810

technical@alumascwms.co.uk

AWMS

Station Road

Burton Latimer

Kettering

Northamptonshire

NN15 5JP

+44 (0)1536 383 810

info@alumascwms.co.uk

ALUMASC[®]

WATER MANAGEMENT SOLUTIONS

