



AstroGlaze

Glass Rooflights



more choice, better prices.

The UK's Leading Supplier of Rooflights, Skylights and Smoke Vents.



The National Domelight Company

The National Domelight Company are specialist suppliers of domelights, rooflights, skylights and smoke vents, to roofing contractors and builders, to developers of commercial and residential property, and to private homeowners. Our family-run company has been successfully trading for over 30 years and our UK-based sales team has more than 50 years of rooflight and skylight knowledge between them. You can trust us to know what we are talking about and to give you the best advice and guidance to find the right rooflight for you.

Why choose the National Domelight Company?

• Widest choice

We are the UK's leading supplier of rooflights and as a result we can supply you with any size, shape and material of rooflight, and with any combination of upstands and accessories, that you will ever need – *and all at the best trade prices.*

• No more waiting

We deliver a first class service and our large warehouse and stocks mean that you won't have to wait long for your order. We can deliver most stock units, direct to site, within 48 hours. Our **FREE nationwide delivery** service means your rooflight will be safely delivered at your convenience – just when you need it.

• Best quality

Our prices are competitive yet we still deliver industry leading quality and service in everything we do. Guaranteed.

• Dedicated support

We have been supplying the roofing industry for decades and to help you we provide useful resources at www.nationaldomes.com and CAD downloads to incorporate into your digital plans. Just call our **Technical Support Team on 01276 451555** for practical advice and support, no matter what you need.

Don't just take our word for it – Put us to the test, let us quote your next job and see just how much you could save! We guarantee excellent products, at sensible prices.

Our guarantee of quality

All rooflights and skylights supplied by The National Domelight Company have been fully tested before they are added to our portfolio. This ensures you can always rely on our industry leading quality no matter what your requirement.

Protecting the environment

The National Domelight Company is fully aware of the effects that the construction industry can have on the environment. We work hard to ensure that our business, sourcing and logistics processes have a minimal effect on the environment, and that our products have a reasonable lifespan and can be recycled wherever possible.

Why we need natural light

There is no denying that natural daylight in a room can make all the difference to its occupants. Rooflights are the best way of introducing natural light and can provide up to three times more daylight than an equally-sized vertical window. People work better in naturally lit workspaces and natural lighting can have less of an environmental impact than artificial lighting.

The National Domelight Company can advise on specific industry policies and regulations, and give guidance on introducing natural light into buildings.

more choice, better prices.

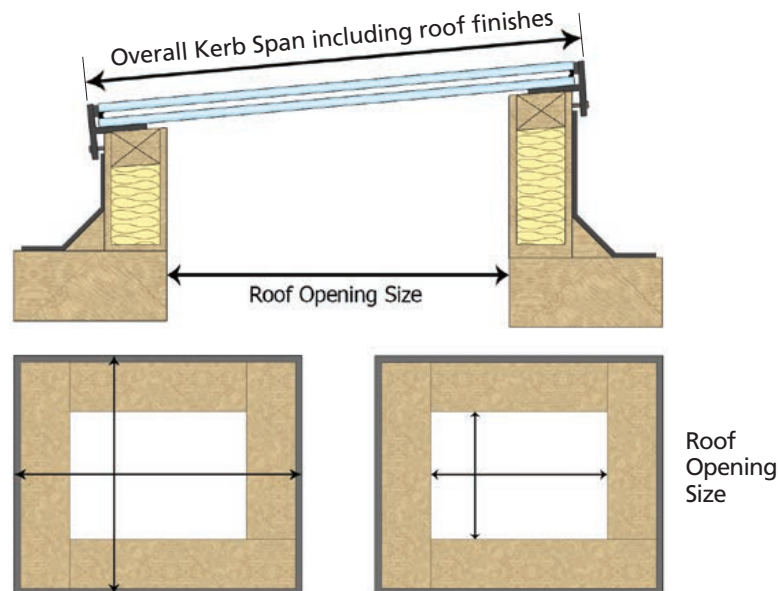
Measuring Guide



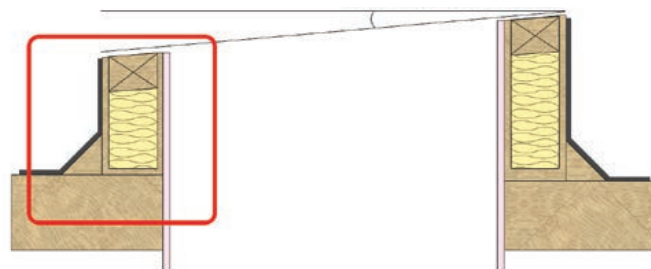
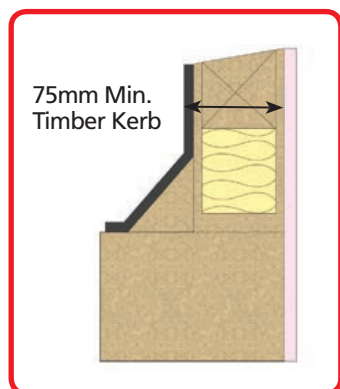
We recommend you use the following measuring guide to assist you in working out the correct measurements for your rooflight. The National Domelight team will be happy to help you apply the results to a full specification.

1 Size

Please contact us for specific measuring guides for all products not listed below. These are available from us and can be tailored to suit your specific product and size requirements.



2 Kerb Construction



Builders kerb construction for flat glass rooflights including: Flat Fixed, Multi-Part, Walk-On*, Access Hatch, Manual Hinged and Electric Hinged. Please Note – A recommended pitch for flat glass rooflights is between 5° – 10° to aid water runoff and help prevent water ponding on the glazing.

*For Walk-On rooflights a 1° pitch is recommended.

Contents Overview

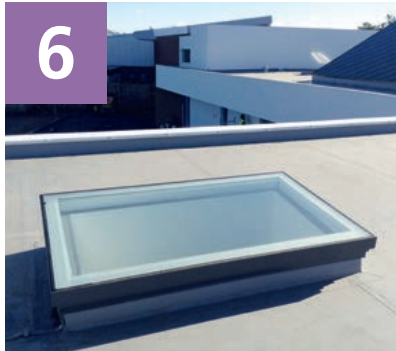
3



Measuring Guide

See our *Measuring Guide* checklist for the easy way to choose the right rooflights for your project.

6



Flat Fixed Rooflights

Guaranteed to look good in any setting. They provide the end-user with high daylight levels and sealed double-glazing housed in an aluminium frame, which adds to the superior thermal performance.

8



Multi-Part and Multi-Section Rooflights

For those jobs that require a large expanse of glass, and still need to look good, Astroglaze is also available as a multi-part system.

13



Electric Hinged Rooflights

The perfect way to control ventilation where a manual system might not be practical, meaning you can operate your rooflight at the touch of a button.



10 Walk-On Rooflights

The perfect solution for roof terraces, or similar roofing areas, where there are likely to be pedestrians. The unit has been specifically designed for strength while still providing high levels of natural daylight.



11 Access Hatches

Access Hatch rooflights are available in both manual and electric variants designed with security in mind giving you easy, unobstructed access to your roof area.



12 Manual Hinged Rooflights

A Manual Hinged rooflight provides the perfect way to manually control ventilation in the space below via a supplied manual operating pole meaning you can have as much or as little ventilation as you require.



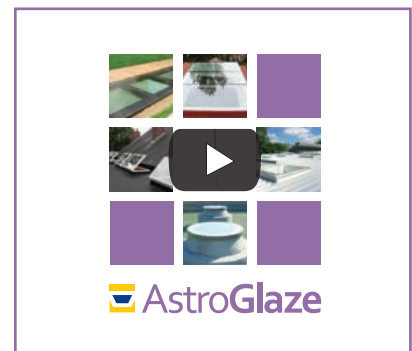
14 Smoke Vents/AOVs

Flat glass Smoke Vents/AOVs are designed to reduce smoke build-up, helping to provide a safer escape route for occupants and access for fire-fighting personnel.



15 Technical Services

The National Domelight Company sales team is always available to assist you, from your initial enquiry through to after sales support. This includes help with specification writing, site surveys, budget costings, and fully detailed quotations.



Astroglaze Video

Visit our website to watch the Astroglaze Product Video.

Flat Fixed Rooflights

Astroglaze rooflights are guaranteed to look good in any setting. They provide the end-user with high daylight levels and sealed double-glazing, housed in an aluminium frame, which adds to the superior thermal performance.

These easy-to-install units come in a choice of 3 polyester powder coated colours:

- **White RAL: 9010**
- **Slate Grey RAL: 7015**
- **Jet Black RAL: 9005**

Other RAL colours are available.

Key Features

- U-values as low as 1.4 W/m²k
- Toughened outer panes, low-E laminated inner panes and Argon filled cavities
- Available in a standard range of double or triple glazed units, in square, rectangular and circular configurations
- Outstanding aesthetics – inside and out
- Non-fragile, CWCT compliant construction to TN92
- Glazing can also be specified as: tinted; solar control; dirt resistant; obscured; toughened inner glazing panes; as well as a wide range of other options

Shapes

Astroglaze Flat Fixed rooflights can be supplied in a variety of popular shapes, including: • Square • Rectangular • Circular • Triangular • Hexagonal • Octagonal • Trapezoidal • Irregular shapes

Sizes

Astroglaze rooflights can be supplied in a wide range of sizes and configurations. Maximum standard sizes for rooflights using a single glazing panel are:

- **Square**
Up to 1800mm x 1800mm or 3.3m² as standard, up to 2300mm x 2300mm (via special order)
- **Rectangular**
Up to 4.9m² (Toughened Glass) as standard, up to 9m² (single pane, via special order)
- **Circular**
Up to 2.2m diameter for single pane, up to 3.2m diameter for multi-section
- **Triple Glazed:**
Square: Up to 1800mm x 1800mm
Rectangular: Up to 3m² as standard
Circular: Up to 1800mm diameter (single pane)

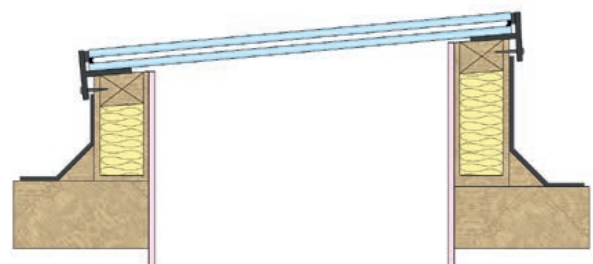
Astroglaze Flat Fixed Rooflight Benefits

Standard Glass Specification

- We make sure that the finished rooflight will always look neat and aesthetically pleasing when installed
- Our standard glazing is clear but comes with a sandblasted margin which, on installation, hides the top of the kerb, and any roofing material edges, from anyone viewing from above or below the unit. The sandblasting is available in a variety of sizes but can be tailored to suit your specific needs and depending on the width of your kerb

Other Glass Options

- Other glazing options are available, including solar control glass, tinted glass and fully sandblasted glass
- The glass rooflights are supplied with a 30.8mm thick double glazed glass unit as standard which comprises a 6mm toughened outer pane, 18mm Argon filled cavity, and a 6.8mm low-E laminated inner pane
- For those who require lower U-Values, Astroglaze can also be supplied triple glazed. Triple glazed elements are 50.8mm thick: with 6mm toughened outer, 16mm Argon filled cavity and 6mm toughened middle, 16mm Argon filled cavity and 6.8mm low-E laminated inner. Double glazed units are also available with Heat Mirror glass for U-Values as low as 0.5 W/m²k



Standard Flat Fixed unit on builders kerb

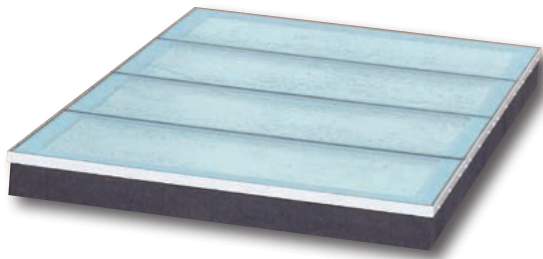
For more advice, please call our **Technical Support Team** on **01276 451555**.



Multi-Part and Multi-Section

For those jobs that require a large expanse of glass, and still need to look good, Astroglaze is also available as a multi-part system. The rooflight is supplied in smaller sections for easy construction on site.

During assembly the Astroglaze unit is supported until the joins between the panes are secured with a silicone sealant. The finished rooflight sits firmly on the builder's kerb in the usual way. Our multi-part glass rooflights provide a great way to glaze large areas and they come in either a grey, black or white polyester powder coating (see single units).

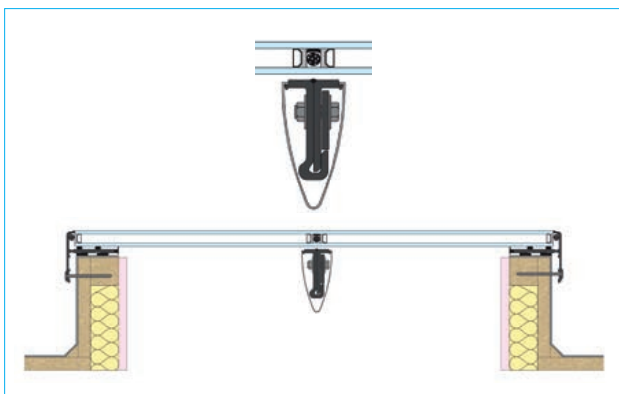


Maximum spans up to 3.2m can be accommodated. There is no limit on the length of the rooflight. Bay centres depend on span width. All outer panes have sandblasted borders for improved aesthetics.

In addition to the standard glazing specification as listed, glazing can be specified as:

- Tinted • Solar Control • Dirt resistant • Obscured • Toughened inner glazing panes, as well as a wide range of other options – please contact our sales office for more details.

Glazing elements are contained within a thermally enhanced, welded aluminium frame, for installation to a builders' kerb.



Standard 2 piece Multi-Part unit on builders kerb with Aero-fin option

Astroglaze Multi-Part Rooflight Benefits

Standard Glass Specification

Double glazed units:

- 6/8mm clear toughened outer
- 16/18mm Argon filled cavity
- 6.8/8.8mm low-E laminated inner

Triple glazed units:

- 6mm clear toughened outer
- 16mm Argon filled cavity
- 6mm toughened middle
- 16mm Argon filled cavity
- 6.8mm low-E laminated inner



NEW! Optional PVCu Aero-fin shroud for internal glazing bars

Frame Finish

- All units feature sealed double glazed units contained within a thermally enhanced aluminium frame, which is available in 3 polyester powder coated colours as standard: White RAL: 9010, Slate Grey RAL: 7015, Jet Black RAL: 9005. Other RAL colours are available. Please contact us for further information

Options Available

- Integrated 24v or 230v electrically operated opening sections
- Walk-on specification glass
- **NEW!** PVCu Aero-fin for improved aesthetics
- Double or triple glazed

Thermal Insulation

- Total product U-values for double glazed multipart rooflights are as low as 1.4 W/m²k, exceeding the requirement for Part L compliance. Triple glazed or Heat Mirror glass units achieve total product U-values as low as 1.2 W/m²k
- U-value calculations can be supplied for specific rooflight configurations

Wall abutment

- Astroglaze rooflights can be designed to accommodate wall abutment on up to three sides if required. This is particularly useful if a rooflight is required to be installed in a small roof area or tight space



Walk-On



The Astroglaze Walk-On rooflight is the perfect solution for roof terraces, or similar roofing areas, where there are likely to be pedestrians. The unit has been specifically designed for strength while still providing high levels of natural daylight.

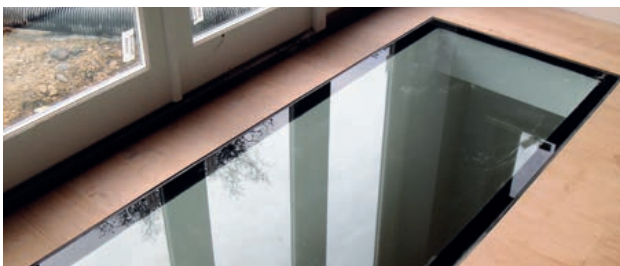
Walk-On rooflights give any property the wow factor and when installed within a roof terrace with decking level with the glazing, provide a seamless modern feature in any building.

All Astroglaze Walk-On rooflights are designed to meet the current British and European Standards (BS EN 1991-1-1).

Internal Walk-On rooflights are a perfect way to introduce light into dark areas of a building that may not have any natural light from windows such as cellars or basements.



External Walk-On rooflight with wall abutment



Internal Walk-On rooflight

Sizes

Available in a wide range of sizes:

- Single pane – up to 1.2m x 3m or 3.6m², larger sizes are available, contact NDC for details
- Multi-section – up to 2.4m slope span, unlimited length with bays at up to 1.2m centres

For more advice, please call our **Technical Support Team on 01276 451555**.

Astroglaze Walk-On Rooflight Benefits

Standard Glass Specification for most domestic projects

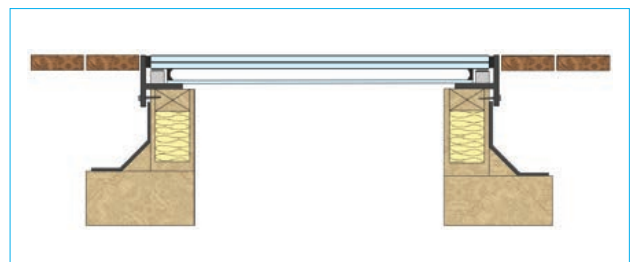
- 55mm double glazed unit comprising 33mm toughened laminated outer; 16mm argon cavity; 6mm low-E toughened inner
- Commercial and industrial specifications are also available where required

Options Available

- Slip-resistant external finish
- Black or white painted/ceramic border
- Single or multi-sections
- Obscure glazing for privacy



External Walk-On rooflight (obscure)



Standard external Walk-On unit on builders kerb

Access Hatches

Astroglaze Access Hatch rooflights are available in both manual and electric variants in square and rectangular sizes. Astroglaze Access Hatch rooflights are designed with security in mind, with Yale shoot bolt locking mechanism for manual access hatches.

All Manually Hinged Access Hatches come with fully concealed gas rams that allow the unit to be easily opened to approximately 80° to allow safe and easy passage. Astroglaze Electric Access Hatches are supplied with two 24v actuators which can open up to 90° for safe convenient access at the touch of a button.

All units feature sealed double glazed units contained within a thermally enhanced aluminium frame, which is available in 3 polyester powder coated colours as standard:

- **White RAL: 9910**
- **Slate Grey RAL: 7015**
- **Jet Black RAL: 9005**

Other RAL colours are available.



Electric Access Hatch

For more advice, please call our **Technical Support Team on 01276 451555**.

Standard Glass Specification

- 30.8mm thick double glazed unit comprising a 6mm toughened outer pane, 18mm Argon filled cavity and a 6.8mm low-E laminated inner pane

Sizes

Astroglaze Access Hatch rooflights are available from:

- Manual – Minimum kerb span of 650mm, up to 1200 x 1200mm
- Electric – Square minimum 1000 x 1000mm up to 1500 x 1500mm
- Rectangular – up to 1200 x 1800mm
- Larger sizes can be accommodated by special order



Manual Access Hatch with fully concealed gas rams



Standard Access Hatch unit on builders kerb

Manual Hinged



The Astroglaze Manual Hinged rooflight provides the perfect way to control ventilation in a space and is particularly well-suited for kitchens and areas with high humidity levels. The unit is operated with a manual spindle and comes with a portable winding rod.

Astroglaze Manual Hinged rooflights consist of an aluminium frame and sealed double-glazing which is constructed to enhance thermal performance.

For more advice, please call our **Technical Support Team on 01276 451555**.



Manual Hinged unit (closed)

Astroglaze Manual Hinged Rooflight Benefits

Standard Glass Specification

- Standard glass specification: 30.8mm thick double glazed unit comprising a 6mm toughened outer pane, 18mm Argon filled cavity and a 6.8mm low-E laminated inner pane

Frame Finish

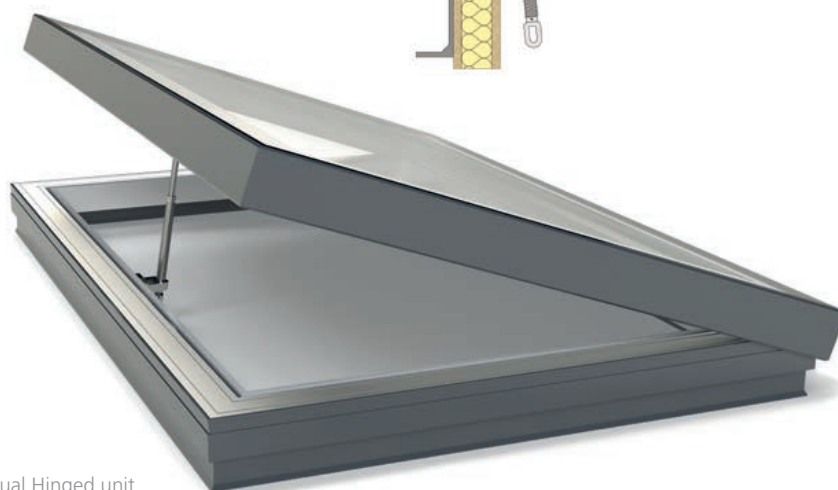
- All units feature sealed double glazed units contained within a thermally enhanced aluminium frame, which is available in 3 polyester powder coated colours as standard: White RAL: 9010, Slate Grey RAL: 7015, Jet Black RAL: 9005. Other RAL colours are available. Please contact us for further information



Portable winding rod available in 1.5m, 2m and 3m lengths



Manual Hinged (closed)



Manual Hinged unit

Electric Hinged



The Astroglaze Electric Hinged rooflight provides controlled ventilation in a space with high ceilings where a manual system might not be practical. For easy operation the unit comes with either a 24v or 230v AC, fully-concealed chain link actuator, that controls the rooflight. Ideal for kitchens and areas with high humidity levels.

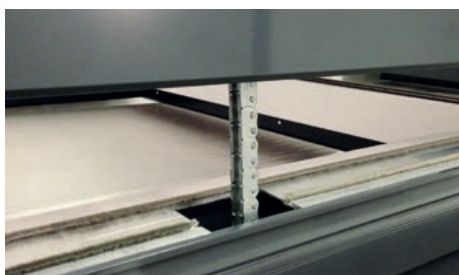
Astroglaze Electric Hinged rooflights consist of an aluminium frame and sealed double-glazing which is constructed to enhance thermal performance. The Astroglaze Electric Hinged rooflight is supplied with concealed actuators for those looking for a more minimalistic design. Available to open to 100, 200 or 400mm stroke length these easy-to-install units come in a choice of 3 polyester powder coated colours:

- **White RAL: 9910** • **Slate Grey RAL: 7015**
- **Jet Black RAL: 9005** Other RAL colours are available.

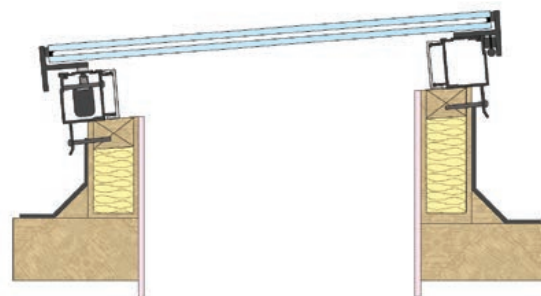
Astroglaze Electric Hinged Rooflight Benefits

Standard Glass Specification

- Standard glass specification: 30.8mm thick double glazed unit comprising a 6mm toughened outer pane, 18mm Argon filled cavity and a 6.8mm low-E laminated inner pane



Single Electric Hinged actuator



Electric Hinged unit with Concealed actuator (closed)

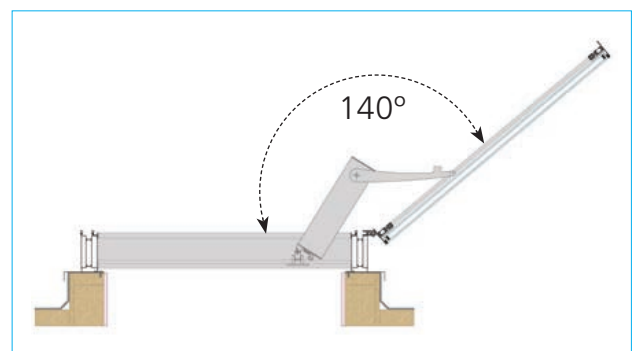
Smoke Vents/AOVs

Flat glass smoke vents/AOVs are designed to reduce smoke build-up, helping to provide a safer escape route for occupants and access for fire-fighting personnel. In partnership with leading specialists in control systems, we provide a complete package of smoke ventilation options.

These smoke vents/AOVs are a classic example of how 'function' meets 'form'. Fully compliant to BS EN 12101-2 regulations for natural smoke and heat exhaust ventilation whilst still looking eye-catchingly attractive, this flat glass unit is the perfect solution for both commercial and residential buildings.

These AOV Smoke Vents come in two standard sizes, which achieve an Aerodynamic Free Area of 1.0m² and 1.5m² to ensure you have sufficient and compliant ventilation in the event of a fire.

Designed to accommodate a weathered builder's kerb, it's recommended that this unit is installed flat, or at a pitch of no more than 5 degrees, thus maximising the required level of ventilation when in operation.



Fully compliant Smoke Vent AOV to BS EN 12101-2

- Fully Compliant with BS EN 12101-2 regulations for natural smoke and heat exhaust ventilation



Technical Services



The National Domelight Company sales team is always available to assist you, from your initial enquiry through to after sales support. This includes help with specification writing, site surveys, budget costings, and fully detailed quotations.

Health & Safety

(HSE) Health and Safety in Roof Work states that where rooflights are required, designers should consider:

- Specifying rooflights that are non-fragile
- Fitting rooflights designed to project above the plane of the roof and which cannot be walked on (these reduce the risk but they should be capable of withstanding a person falling onto them)
- Protecting rooflight, e.g. by means of mesh or grids fitted below or above the rooflight
- Specifying rooflights with a design life that matches that of the roof, taking account of the likely deterioration due to ultraviolet exposure, environmental pollution and internal and external building environment

Man Safe

Man-safe is a term often used within the construction industry to mean that the product can withstand foot traffic. However, man-safe has no recognised definition and 'non-fragile' does not qualify a product to be used as a thoroughfare. Whilst glazing and other accessories may be designed to safely resist the impact of a human body falling against it, the wilful act of walking on any kind of roof glazing must be forbidden at all times.

The act of walking upon a glazed structure can cause microscopic damage that, in time, may have a detrimental effect upon the impact performance of the system. Walking upon glazing may encourage a practice that could lead to general disregard for the rating of said glazing, with catastrophic consequences.

Handling & Storage

While all Astroglaze rooflights and associated products are suitably packaged to avoid damage care should be exercised when handling. For moving larger items, two or more people may be needed. All products should be stored flat at all times in dry conditions until installation.

Condensation

Condensation occurs where warm moist air meets cold surfaces. As warm air rises, the risk of condensation forming at rooflight level is relatively greater than at a lower level. The risk can be minimised by specifying ventilated rooflights. However, because



temperature and humidity levels are clearly beyond our control, no guarantee can be given against the formation of condensation. Condensation can also occur when the room below has high humidity levels, for example during construction from new plaster or paintwork. However, once the humidity level in the room is restored to normal this condensation dissipates.

Installation

Most Astroglaze rooflights are supplied ready assembled however some larger units may require on site assembly. All rooflights will be supplied pre drilled complete with security screw bolts and factory applied gaskets where applicable. Astroglaze rooflights are delivered to site in protective packaging. Full instructions and fixings are included with all products, and should be carefully studied prior to installation.

Guarantees

All Astroglaze rooflights, when installed on kerbs in accordance with manufacturer's instructions, are guaranteed against the effects of defective design, materials or construction for a period of five years from date of supply by National Domelight Company. All other items such as kerbs, ventilation systems, electrical components and other accessories are guaranteed for 12 months from date of supply by National Domelight Company. Please contact us for full details and conditions of warranty periods.



more choice, better prices.

**Pyramid House
52 Guildford Road
Lightwater
Surrey
GU18 5SD**

Tel: 01276 451555
Email: info@nationaldomes.com
www.nationaldomes.com

**Visit our website to watch the
Astroglaze product video.**



Important notes:
The responsibility for determining that any building component complies with the relevant Building Regulations rests solely with the client or specifier.
The National Domelight Company policy is one of continuous product improvement: accordingly we reserve the right to alter specifications without notice at any time.

