

Follow us on



UK ENQUIRIES

Free Phone: 0800 156 0010

Fax: 01302 560 203

Email: uk.sales@aalberts-ips.com

TECHNICAL HELP

Free Phone: 0800 156 0050

Email: technical@aalberts-ips.com

INTERNATIONAL ENQUIRIES

EXPORT

Tel: +44 (0) 1302 855 656

Email: export@aalberts-ips.com

CONNECT CONTROL

Tectite

XPress

VSH Shurjoint

Terrier

Ballorex

Pegler

Prestex

Yorkshire

Endex

Kuterlite

CONNECT CONTROL



DIFFERENTIAL PRESSURE VALVES

PUTTING YOU IN CONTROL

Pegler

HEAD OFFICE

Aalberts Integrated Piping Systems Ltd

St. Catherine's Avenue, Doncaster,
South Yorkshire DN4 8DF, England

Tel: +44 (0) 1302 560 560

Fax: +44 (0) 1302 560 203

Email: info@pegler.co.uk

www.pegler.co.uk

Registered in England Company No. 00401507

All brand names and logo styles are registered trademarks. Maintaining a policy of continual product development, Pegler reserves the right to change specifications, design and materials of products listed in this publication without prior notice.

LIT. REF: 880137



PEGLER DIFFERENTIAL VALVES

Prevents unnecessary increases in circulating pressure when thermostatic or motorised valves close, leading to system or valve noise. Also allows water flow for pump overrun in place of a fixed bypass only when required.

As recommended for compliance with Building Regulations Part L1 and L2. Available in 3 sizes from 3/4" up to 1 1/4", the Pegler DPV is intended for domestic to light commercial applications.

SPECIFICATION

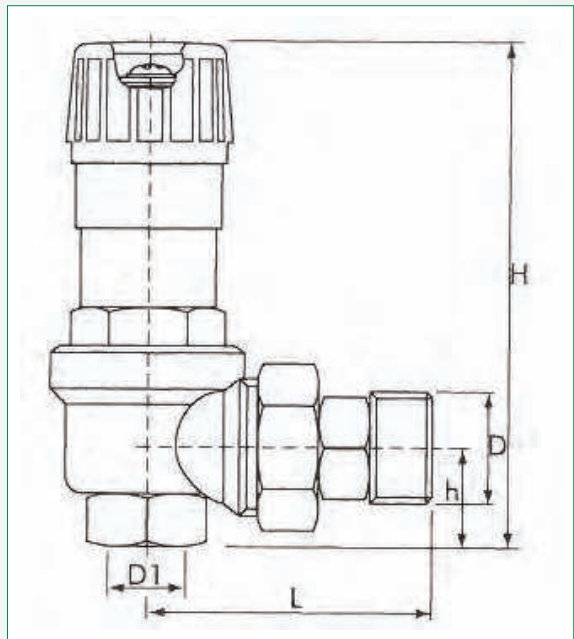
- ✚ Small proportional deviation
- ✚ Maximum response accuracy due to calibrated high tensile spring
- ✚ Low friction
- ✚ Directly readable adjustment
- ✚ Excellent flow characteristics
- ✚ Gunmetal
- ✚ Setting range 50-500 mbar
- ✚ Max operating temperature 100°C
- ✚ Min operating temperature 1°C
- ✚ Max operating pressure 6 bar

PRODUCT RANGE

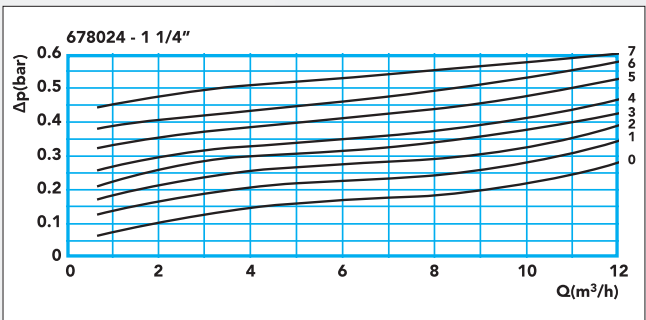
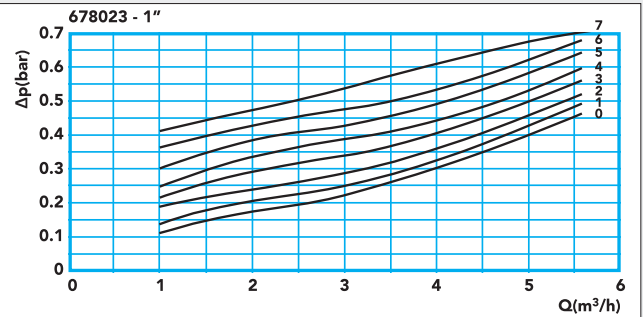
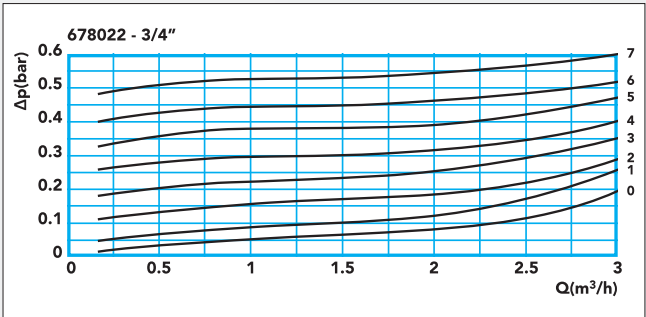
Description	Size	Order code
Pegler Differential Pressure Valve	3/4"	678022
Pegler Differential Pressure Valve	1"	678023
Pegler Differential Pressure Valve	1 1/4"	678024

Dimensions (mm)					
SIZE	D1 ("F)	D1 ("M)	L	H	h
3/4"	3/4"	3/4"	70	120	26
1"	1"	1"	83.5	138	33
1 1/4"	1 1/4"	1 1/4"	100	148	39

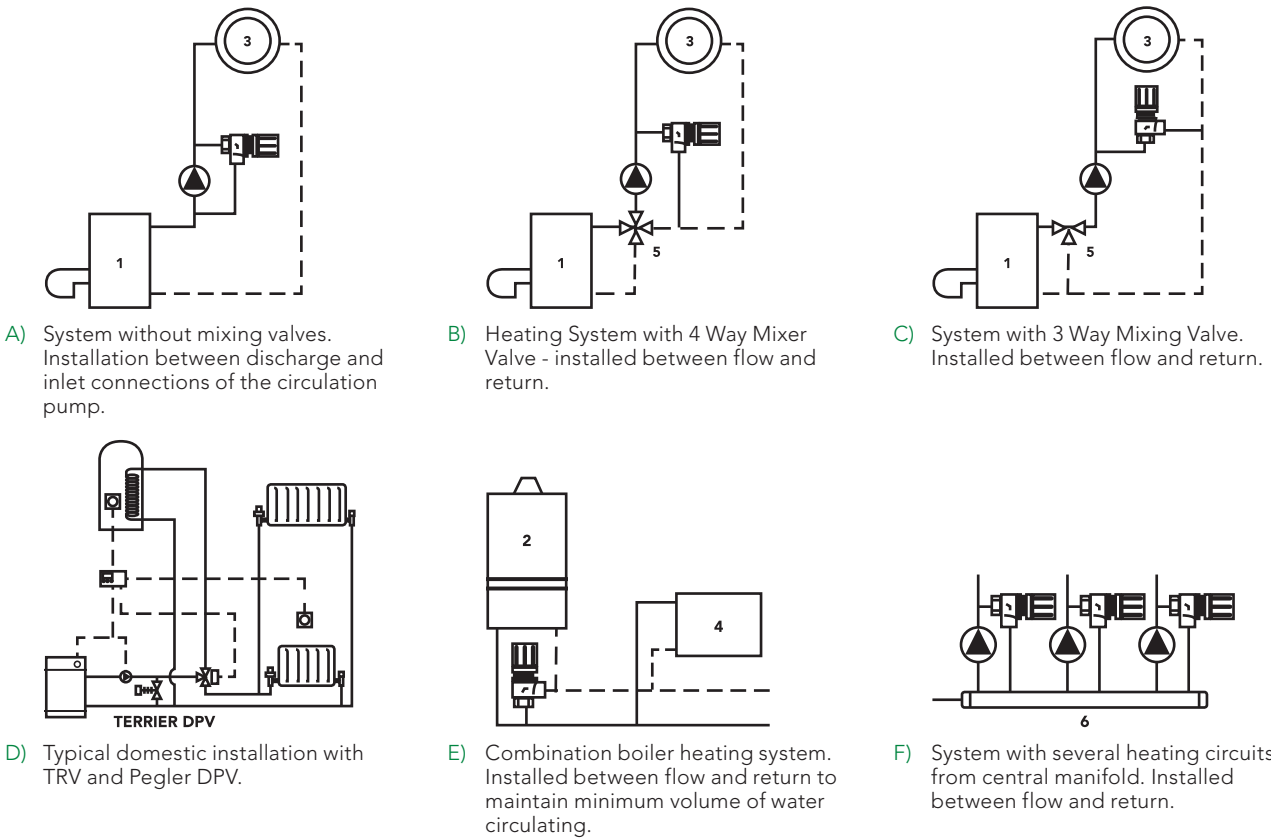
678022



SETTINGS AND FLOW



APPLICATIONS (Commercial)



- KEY 1 Oil/Gas Boiler 2 Water/Heater 3 Heating Circuit 4 Radiator 5 2, 3 or 4 Way Valves 6 Manifold Distributor