

# Fasteners for structural timber



# The building envelope specialist





# Contents

<b>The SFS Group</b>	<b>4</b>
<b>Division Construction</b>	<b>5</b>
<b>Value added</b>	<b>6</b>
<b>Design tools from SFS</b>	<b>7</b>
<b>The Academy</b>	<b>8</b>
<b>eLogistics platform</b>	<b>9</b>
<b>Connections and reinforcements for timber</b>	<b>10</b>
<b>Product overview: Structural applications</b>	<b>11</b>
<b>WT</b>	<b>12</b>
<b>WR</b>	<b>16</b>
<b>WB</b>	<b>18</b>
<b>WS</b>	<b>20</b>
<b>MULTI-MONTI®-plus</b>	<b>22</b>
<b>Product overview: General applications</b>	<b>25</b>
<b>HT-T</b>	<b>26</b>
<b>HT-S</b>	<b>42</b>
<b>HUT-S</b>	<b>47</b>



# The SFS Group

## Inventing success together

**SFS is a worldwide leading supplier of mechanical fastening systems, assemblies, precision moulded parts and logistics solutions.**

Together with our customers we develop and supply customised solutions for the most varied of industries and markets that offer sustained added value according to our value proposition "Inventing success together".

Within the Construction sector, we are the building envelope specialists and have innovative solutions for Roofing, Façade, Doors and Windows, Fall Protection and Timber Works.

---

**Construction**



---

**Automotive**



---

**Aircraft**



---

**Medical**



---

**Electronics**





# Division Construction

## The building envelope specialist

### Flat Roofing

SFS has been at the forefront for setting standards in the mechanical fastening of membranes and insulation on flat roofs for over 50 years.

### Roofing and Cladding

A pioneer in self-drilling and threading fasteners for roofing and cladding, offering a wide spectrum of products, backed up by comprehensive technical expertise.

### Timber Construction

SFS manufacture customised fastening solutions for timber construction, providing robust designs that meet the latest standards.

### Rainscreen Support Systems

Manufacture of Rainscreen Support Systems that are safe, economic and effective for use across a wide range of building types.

### Hinge Technology and Fenestration

SFS manufacturers high quality hinges for internal and external doors and windows across a wide range of material types including UPVC, timber, composite and metal.

### Fall Protection

The innovative fall protection systems developed by SFS protect people who work at heights.

The SFS logo is displayed in a bold, orange, sans-serif font. It consists of the letters 'SFS' with a horizontal line underneath the 'S'.



# Value added Expect more

**From design through to installation, the SFS team provide comprehensive support and technical expertise to help along the way.**

## **Supporting you, from design...**

SFS Designer is our free calculation software which is available to help designers select the right anchor to meet your needs. Start by specifying the base material and item to be fixed plus the loads expected to be applied. By selecting the different anchors available, it identifies the best product and allows you to select alternate fixing configurations to find the optimal solution. SFS Designer uses ETA data for complete peace of mind.

## **...to inventory management...**

Our eLogistics platform increases efficiency and saves money through smarter inventory management. The pushLOG® system lets you trigger an order at the touch of a button, reduces process costs and gives absolute transparency as order status can be viewed at any time.

## **...to installation**

Our extensive product portfolio offers solutions across a wide range of applications. Design features such as revolutionary thread geometry and high load capacity mean our precision-engineered fasteners make installation quicker, easier and safer. Get in touch to find out how we can support your business from design to installation.



---

## **Additional information**

**All documentation is available to download from [www.sfsintec.co.uk](http://www.sfsintec.co.uk)**

- Approvals and Declarations of Performance (DoP)
- Datasheets
- SFS Designer
- Product literature

### **Or speak to us directly:**

0330 0555 888  
[enquiries@sfs.biz](mailto:enquiries@sfs.biz)

---

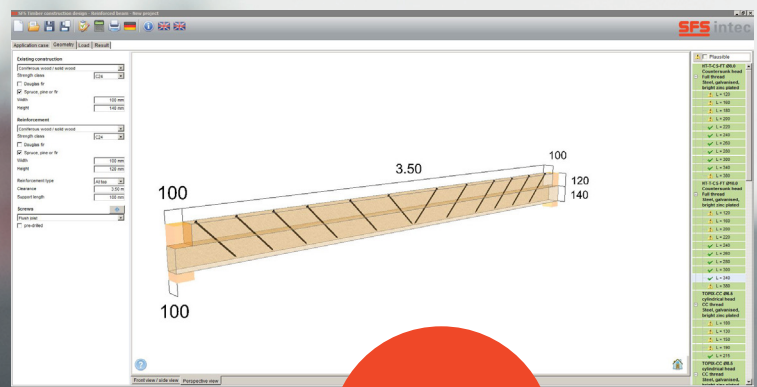
## Design tools from SFS

SFS has a free calculation software package available to aid designers in the selection of the correct anchor to meet your needs.

SFS Designer allows the user to specify the base material in the application and the item to be fixed, plus the loads expected to be applied. By selecting the different anchors available, it identifies the best product to choose and even allows selection of alternative fixing configurations to help the user find the most economical solution.

The results enable comparison of multiple anchor options and the chosen solution is presented in a report that can be printed or saved as a PDF.

There is complete peace of mind as the software uses the data from the ETA and allows regular updates to ensure you are working with the latest version.



Download  
from:  
[sfsintec.co.uk](http://sfsintec.co.uk)





# The Academy

## Looking forward

**We work with universities to provide practical training and in-depth technical knowledge to the next generation of architects, engineers and installers.**

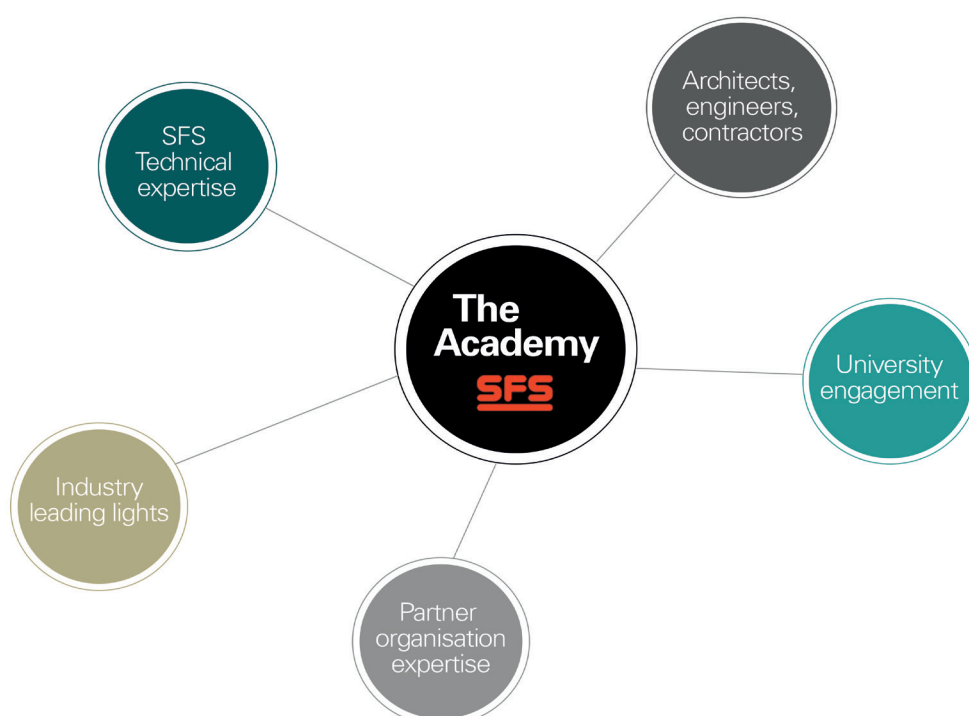
We have two academies in the UK and where we provide technical training seminars combined with practical demonstration facilities. SFS has a strong heritage in increasing knowledge and understanding by educating the wider construction industry. By bringing together industry professionals to learn and share knowledge, and by listening carefully to the industry we continue to break new ground and push boundaries in developing new technologies and products. SFS has long-term partnerships with affiliations and industry governing bodies where our technical experts inform and help to drive the industry forward to ensure the highest quality and standards are met.

One of the greatest challenges faced by the industry is recruiting and training the next generation of architects, engineers and installers. SFS has invested heavily into developing an Academy space in Leeds to create a hub for knowledge exchange and learning within the industry. Alongside this, we are proud to support the community, through close links with Leeds Beckett University, with a comprehensive training programme and bespoke seminars at all levels of experience.

It is our mission to drive our long-standing philosophy of learning, growing and evolving, and our custom-built academy, showroom and hands on training facility enables us to deliver this objective.

**Download the full product prospectus from:**  
**[www.sfsintec.co.uk](http://www.sfsintec.co.uk)**

**Interested?  
Get in touch!**



# eLogistics platform: pushLOG®

## Order at the touch of a button



The pushLOG® system allows order triggering at the touch of a button.

Thanks to the new button with a large trigger surface the system is even more comfortable to use. Furthermore, pushLOG® offers all the functions of the new tag, such as feedback of the delivery status or integration of mobile end devices.

---

"The pushLOG® system helps us to bring peace to the entire company. Every employee knows which product they are to use and also that it is available in the warehouse."

Lukas Müller, joiner, ateBO AG



---

### Advantages and benefits

- Order triggering at the touch of a button
  - Ideal solution for bulky material
  - Can be used everywhere
  - 10 years maintenance-free
  - Order status can be viewed any time
  - Administer all items via one system with eLogistics
-

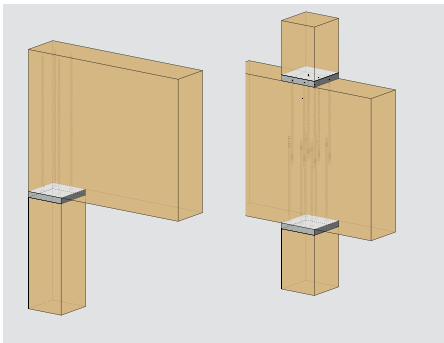


# Connections and reinforcements for timber construction

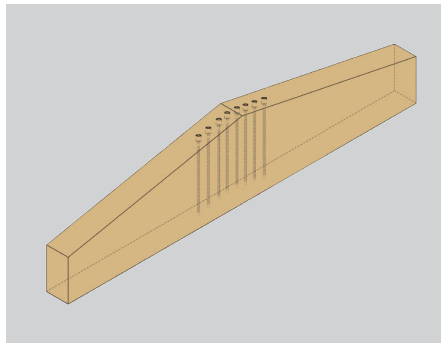
**For the creation of creative and high-performance support structures in timber construction, considered connections are required.**

With the fastening systems of SFS, architects, engineers and timber building manufacturers can affordably create exceptional concepts, without having to make compromises in terms of safety and aesthetics. Detailed technical documents make the realisation of timber constructed buildings easy.

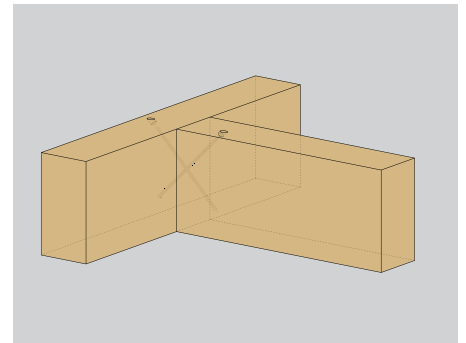
**Support reinforcement**



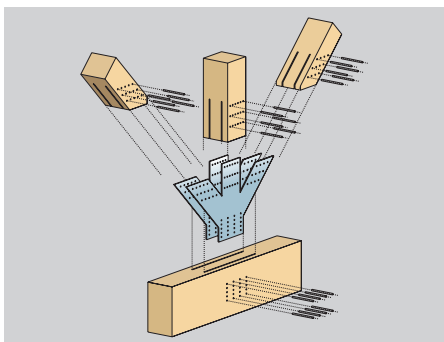
**Gable roof**



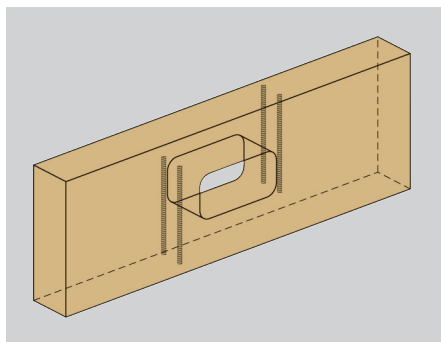
**Main sub-beam**



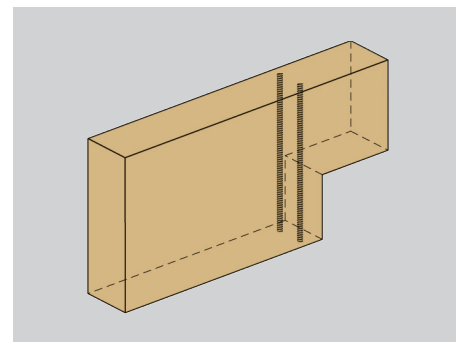
**Trussed beam**



**Openings**



**Notches**

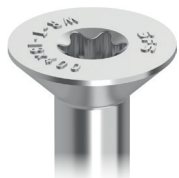


# Product overview

## Structural applications

Designed with a wide range of variants ensuring a suitable fastener is available for your project, all providing an economic and long lasting solution.

### Countersunk head



### Cylindrical head



### Full thread



### Double thread



### External Torx



### Cylindrical countersunk head



### Thread with drill-tip



## Product code

Type      d      l  
**WT - T - 8,2 x 220**

Overall length

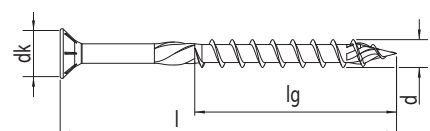
Diameter - outer thread

#### Material

**T** = Tempered steel  
**S** = Stainless steel  
**HP** = High-Performance coating

#### Product family

**WT** = with double thread  
**WR** = with full thread  
**WB** = threaded rod  
**WS** = self-drilling dowel  
**VB** = timber-concrete-composite  
**UD** = roof-insulation  
**SCS** = winged drill fastener



#### Legend

**d** Diameter      **lg** Thread length  
**l** Length      **dk** Head diameter

All measurements in mm





# Timber Fastener WT

## The powerful double thread fasteners for the permanent connection of wooden components.

Thanks to the revolutionary SMARTBITE wood drill tip, the WT system is reliable even in difficult mounting positions. Compared to conventional fasteners the design and installation speed is faster and more precise. The low screw-in torque combined with high load capacity of the fastener create a solution for innovative design concepts in timber construction.

The galvanized surfaces (blue zinc) have a thickness layer of 8µm which meets the requirements for minimum layer thicknesses (see EN14592). The unique thread geometry ensures a contraction of the components and the very small edge and spacing distances provide efficient constructions for your projects.

## Product information

- Very high load transfer
- Fast installation
- Contracting effect
- Low edge and spacing distances

## Approvals



ETA-12/0063

### Small cylindrical head

For a simple and visually appealing installation without splitting

### High load capacity

This powerful fastener allows high safety allowing transfer of large forces and optimal installation time.

### Innovative double thread

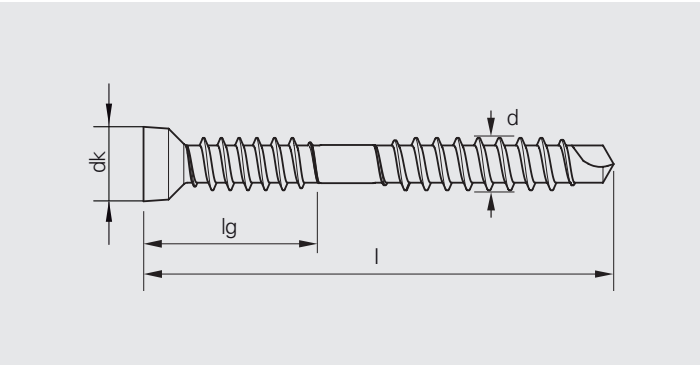
The contraction effect of the thread geometry allows a tight attachment of both components

### Special tip

Noticeable reduction in the risk of wood-splitting together with faster installation speed

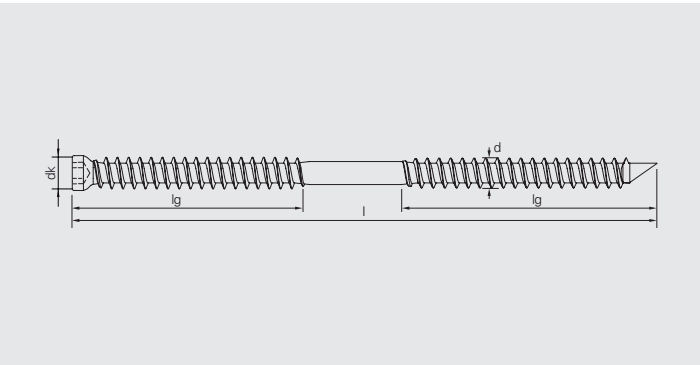


# WT-T



Cylindrical head | TX drive | Double thread | Durocoat®

Product code	lg	dk	Drive	VPE	
WT-T-4,5x40	2 x 15	7,0	T-20	200	761067
WT-T-4,5x60	2 x 17	7,0	T-20	200	743430
WT-T-4,5x70	2 x 25	7,0	T-20	200	1070059

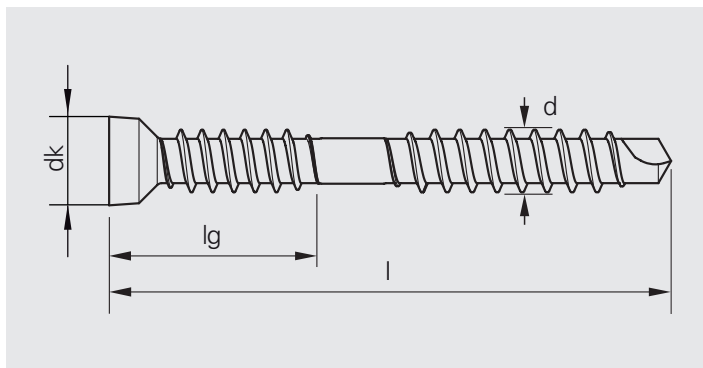


Cylindrical head | TX drive | Double thread |  
Blue galvanized (A2K)

Product code	lg	dk	Drive	VPE	
WT-T-6,5x65	2 x 28	8,0	T-30	100	1564428
WT-T-6,5x90	2 x 40	8,0	T-30	100	1564429
WT-T-6,5x130	2 x 55	8,0	T-30	100	1594438
WT-T-6,5x160	2 x 65	8,0	T-30	100	1564441
WT-T-6,5x190	2 x 80	8,0	T-30	100	1564442
WT-T-6,5x220	2 x 95	8,0	T-30	100	1564443
WT-T-8,2x160	2 x 65	10,0	T-40	100	1564444
WT-T-8,2x190	2 x 80	10,0	T-40	100	1564446
WT-T-8,2x220	2 x 95	10,0	T-40	50	1564447
WT-T-8,2x245	2 x 107	10,0	T-40	50	1564449
WT-T-8,2x275	2 x 122	10,0	T-40	50	1564461
WT-T-8,2x300	2 x 135	10,0	T-40	50	1564463
WT-T-8,2x330	2 x 135	10,0	T-40	50	1564464

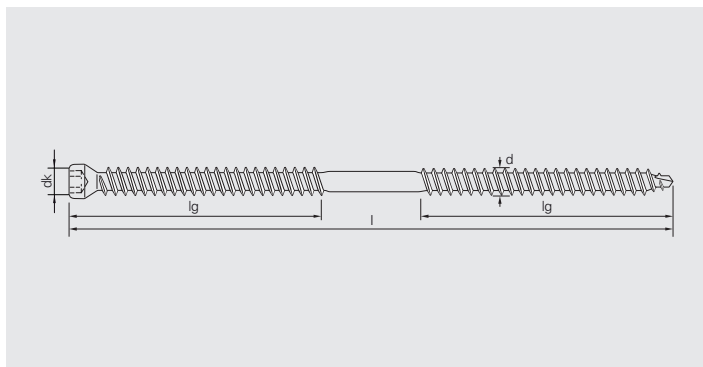


# WT-S



Cylindrical head | TX drive | Double thread | Stainless steel A2

Product code	lg	dk	Drive	VPE	
WT-S-5,0x45	2 x 17	7,0	T-20	200	1013500
WT-S-5,0x60	2 x 17	7,0	T-20	200	1013270
WT-S-5,0x70	2 x 17	7,0	T-20	200	1070057



Cylindrical head | TX drive | Double thread | Stainless steel A2

Product code	lg	dk	Drive	VPE	
WT-S-6,5x65	2 x 28	8,0	T-30	100	1501737
WT-S-6,5x90	2 x 40	8,0	T-30	100	1501738
WT-S-6,5x130	2 x 55	8,0	T-30	100	1501739









# Timber Fastener WR

## The full thread fastener for powerful connections and reinforcements

The high efficiency of the WR fastener paired with fast and reliable installation allow an efficient and secure connection and reinforcements in structural timber construction.

The installation takes place in one operation, no pre-drilling is required. A variety of complex applications can be realized which was previously possible only by very expensive and costly solutions. This allows a single fastener to be used in one operation where previously a number of operations were required. This simplification provides savings in design and installation, the extensive planning documents complete the package.

## Product information

- Up to 1000mm in length
- No pre-drilling required
- High corrosion resistance
- High technical values
- Low tendency to crack with low edge and spacing distances

## Approvals



ETA-12/0062

### Countersunk head

Ready to countersink in the wood and for safe installation of metal attachments

### Efficient full thread

Very high efficiency of thread in lengths up to 1,000mm at the same time with fast installation speed

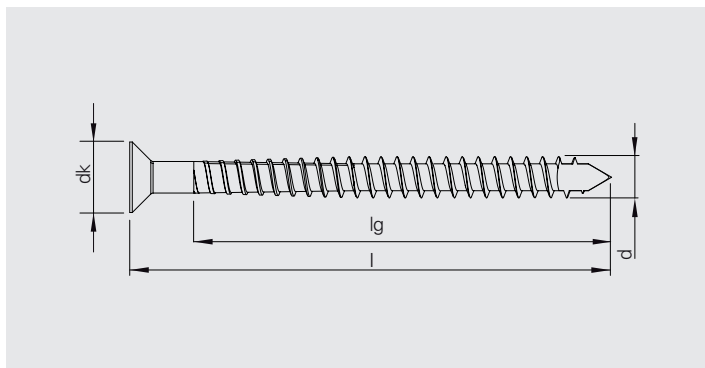
### High corrosion protection

The Durocoat® coating offers a significant increased corrosion resistance in a variety of applications

### Special tip

Allowing less splitting in the wood as well as low edge and center distances, this allows slim components to be used

# WR-T



Countersunk head | TX drive | Full thread | Durocoat®

Product code	lg	dk	Drive	VPE	
WR-T-9,0x250	230	230	230	50	1512718
WR-T-9,0x300	280	280	280	50	1512719
WR-T-9,0x350	330	330	330	50	1512741
WR-T-9,0x400	380	380	380	50	1490435
WR-T-9,0x450	430	430	430	50	1490436
WR-T-9,0x500	480	480	480	50	1490437
WR-T-13,0x400	380	380	380	25	1490438
WR-T-13,0x500	480	480	480	25	1490439
WR-T-13,0x600	580	580	580	25	1490461
WR-T-13,0x700	680	680	680	25	1490462
WR-T-13,0x800	780	780	780	25	1490463
WR-T-13,0x900	880	880	880	25	1490466
WR-T-13,0x1000	980	980	980	25	1490468





# Timber Fastener WB

## The threaded rod for maximum efficiency in lateral tension reinforcements

With the WB system diverse applications become feasible. For example cross connections, breakthroughs, notches, connections, saddle roof beams with curved bottom strap, curved beams, main- secondary beam connections, etc. implemented extremely efficiently.

Thanks to the very high tensile strength, fewer threaded rods are needed. The loading transmission takes place exclusively via the toothing of thread - the time-consuming processing of gluing is eliminated. The fully embedded threaded rods are invisible after installation without impacting the roof structure. The option to have the product cut to a specific length and the extensive accessories offers the greatest possible application and customer benefits.

## Product information

- Headless threaded rod
- High tensile strength of 800N/mm<sup>2</sup>
- Available cut to length
- Easy application without glue
- Approved and monitored

## Approvals



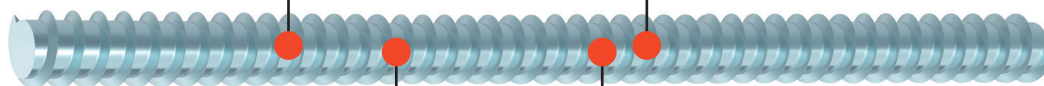
ETA pending

### Headless threaded rod

Fully embedment in the joint ensures no fouling on other components and allows high fire resistance

### Powerful thread

The wood thread manufactured according to DIN 7998 offers a very high tensile strength of 800 N/mm<sup>2</sup>



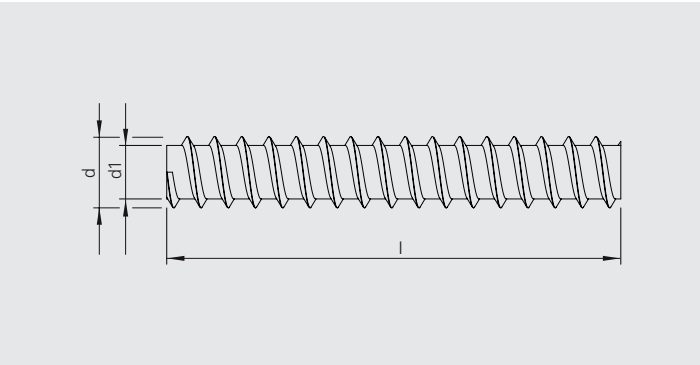
### Cut to length

For a diverse range of applications and a reliable connection

### Extensive range of accessories

Whether screw-in sleeves or drilling aids. Even demanding applications succeed efficiently and reliably

# WB-T



Headless | Full thread | Blue galvanized (A2K)

Can be cut  
to length

Product code	lg	VPE	
WB-T-16,0x3000	3000	5	1029306
WB-T-20,0x3000	3000	5	1029309

Using suitable accessories is recommended

**For WB-T-16  
DWA-12-ZA-SET**

Art.-No. 1112594



**For WB-T-20  
DWA-15-ZA-SET**

Art.-No. 1112595



**Spare drill bit for WB-T-16  
DWA-12-M7**

Art.-No. 1112594



**Spare drill bit for WB-T-20  
DWA-15-M9**

Art.-No. 1112595



**ZE-16-WB**

Art.-No. 1039597



**ZE-16-WB-blunt**

Art.-No. 1333186



**ZE-20-WB**

Art.-No. 1039598





# Timber Fastener WS

## The self-drilling dowel system for an economical wood-steel connection

The WS system allows you to create high quality and economical steel-wood connections.

The self-drilling dowels are installed in a single operation, saving time neither the timber or steel plates require pre-drilling. With a drilling capacity of up to 3 x 5mm steel sheets or a single 10mm steel sheet (quality: S235).

When installed the dowel does not break through the back of the connection and there is simple and reliable dimensioning.

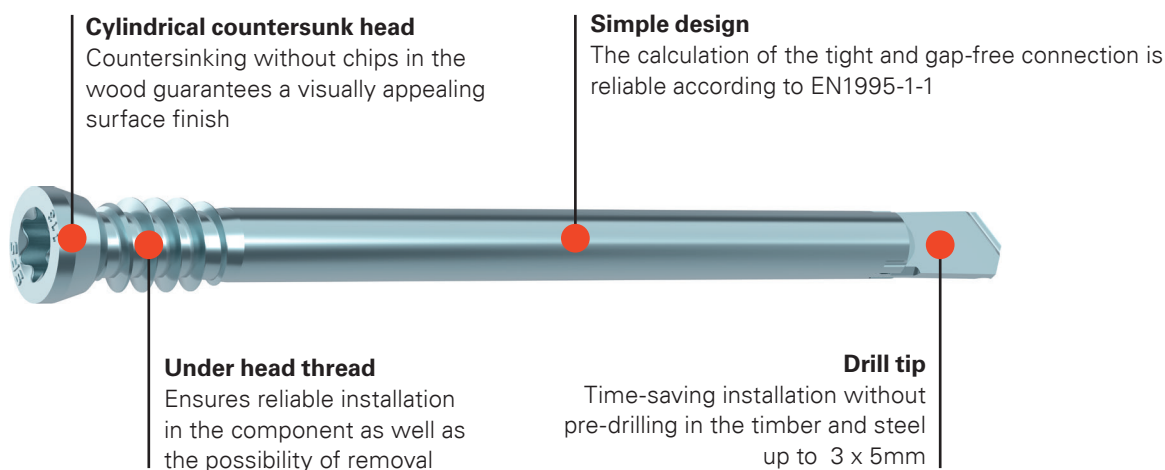
## Product information

- Self-drilling with the special drill tip
- Removable
- Simple design
- High yield moment  $M_{y,k} = 31.93 \text{ Nm}$
- High fire resistance

## Approvals

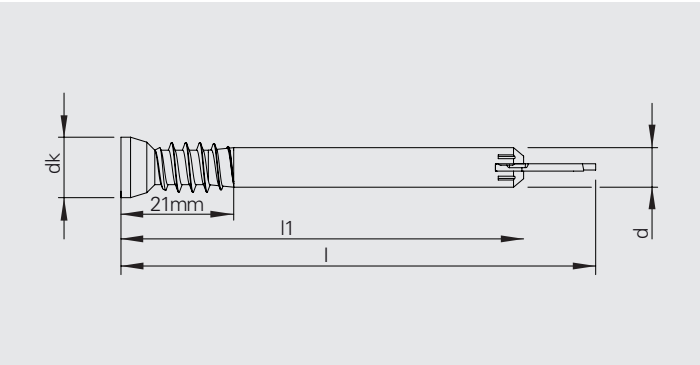


EN14592





# WS-T



Cylindrical countersunk head | TX drive | UK thread |  
Blue galvanized (A2K)

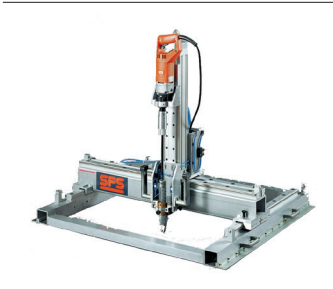
Product code	l1	dk	Drive	VPE	
WS-T-7,0x73	61	10,0	T-40	100	1490470
WS-T-7,0x93	81	10,0	T-40	100	1490471
WS-T-7,0x113	101	10,0	T-40	100	1490472
WS-T-7,0x133	121	10,0	T-40	100	1490473
WS-T-7,0x153	141	10,0	T-40	50	1490474
WS-T-7,0x173	161	10,0	T-40	50	1490475
WS-T-7,0x193	181	10,0	T-40	50	1490476
WS-T-7,0x213	201	10,0	T-40	50	1490477
WS-T-7,0x233	221	10,0	T-40	50	1490478

Using suitable installation tools is recommended

**Manual  
CF-WS/M**  
Art.-No. 1067215



**Pneumatic  
CF WS/P**  
Art.-No. 1017417



**Manual/Horizontal  
ZL-WS**  
Art.-No. 1381426



Fast & reliable  
design acc. to  
EN1995-1-1



# Fastening of timber to concrete

## MULTI-MONTI®-plus

### The fastening system MULTI-MONTI®-plus for anchorages in concrete

The MULTI-MONTI®-Timber Connect (TC) has been designed for fixing timber components to concrete. The combination of a timber thread and concrete thread can transfer very high tensile and shear loads and the small head allows deep countersinking requiring one length for most timber thicknesses. Another innovation is the MULTI-MONTI®-plus combined with a large 44mm diameter washer to DIN 440, which can fix timber up to 245mm thick.

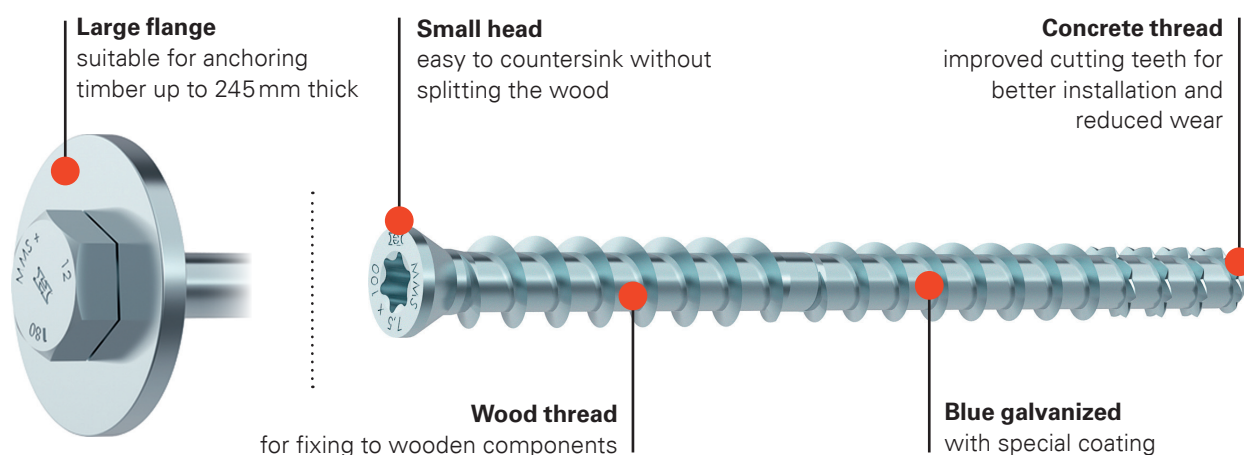
### Easy installation

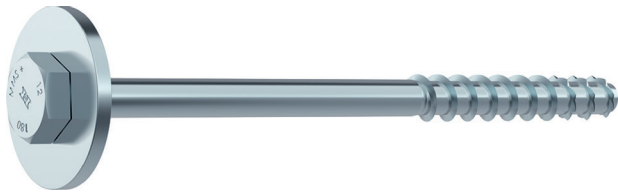
- Drill the wood and concrete in one operation with one concrete drill bit
- Chip removal with the screwdriver
- Direct screwing with a tangential impact driver
- No tightening torque to be tested

### Approvals



ETA-15/0784





### MULTI-MONTI®-plus-T-W44-12xL

A range of concrete fasteners with a 12mm hex head and large 44mm diameter washer, providing a high strength connection.



### MULTI-MONTI®-TC-T-dxL

This range, with a concrete and a timber thread, is ideal for fixing the lower purlins of a structure to concrete slab, or timber elements into concrete walls. Thanks to the special head, it is also possible to countersink the fixture into wood.

### Countersunk head

Carbon steel, hardened, blue galvanized (Chrome VI free)



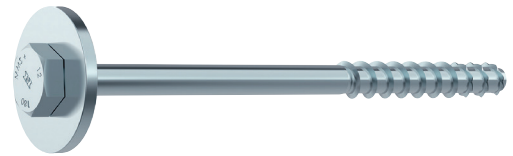
For anchoring in concrete

- T-30
- T-45
- T-50



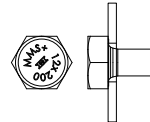
### Hex head with large flange DIN 440 (44mm)

Carbon steel, hardened, blue galvanized (Chrome VI free)



For anchoring in concrete

- SW19



### Power output of the tangential impact driver for use with MULTI-MONTI®

	MMS-7,5	MMS-10	MMS-12
Power output of wired impact driver*	ca. 100 Nm	ca. 250 Nm	ca. 350 Nm
Power output of cordless impact driver*	ca. 160 Nm	ca. 250 Nm	ca. 600 Nm

\* Recommended power output without guarantee

### Setting tools

#### MMS-TC-Bit T-30

Art.-No. 1502353 | Bit



#### MMS-TC-Bit T-45

Art.-No. 1502352 | 1/2"



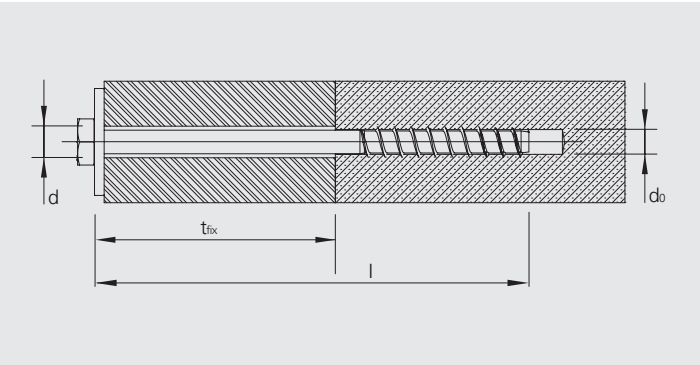
#### MMS-TC-Bit T-50

Art.-No. 1501630 | 1/2"



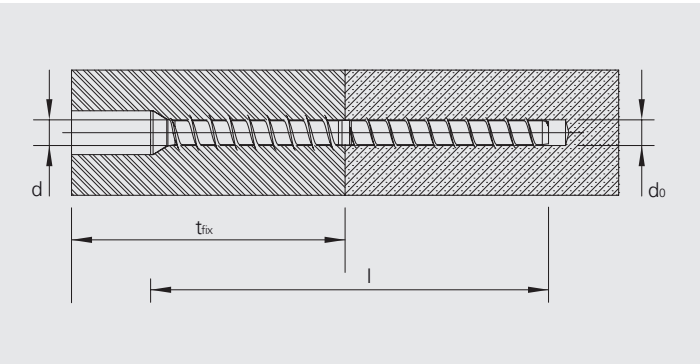


# MULTI-MONTI®-plus-T



Product code	d <sub>0</sub>	t <sub>fix</sub>	Drive	VPE	
MULTI-MONTI-plus-T-W44-12,0x180	10,0	90-105	SW-19	25	1507869
MULTI-MONTI-plus-T-W44-12,0x200	10,0	110-125	SW-19	25	1489555
MULTI-MONTI-plus-T-W44-12,0x240	10,0	150-165	SW-19	25	1489089
MULTI-MONTI-plus-T-W44-12,0x280	10,0	190-205	SW-19	25	1507870
MULTI-MONTI-plus-T-W44-12,0x320	10,0	230-245	SW-19	25	1507871

# MULTI-MONTI®-TC



Product code	d <sub>0</sub>	t <sub>fix</sub>	Drive	VPE	
MULTI-MONTI-TC-T-7,5x100	6,0	40-140	T-30	50	1489053
MULTI-MONTI-TC-T-10,0x130	8,0	60-200	T-45	25	1489059
MULTI-MONTI-TC-T-12,0x160	10,0	80-300	T-50	25	1489065







# For multi-purpose connections in timber construction

## The timber fasteners with the revolutionary tip

With the approved HT fasteners, you have all the advantages on your side. Fast and secure assembly with up to 30% less processing effort. Experts in the timber construction industry value the versatility of the fasteners for internal applications. Used in staircase construction and interior design, in constructive and general timber construction.

Thanks to the revolutionary thread and shaft geometry, installation is simple. Engage fastener, screw, finish. Without the need for pre-drilling or pre-counter sinking, with reduced danger of the wood splitting.

## Product information

- Revolutionary geometry
- Wide range of applications
- Quick and efficient fastening
- High profitability

## Approvals



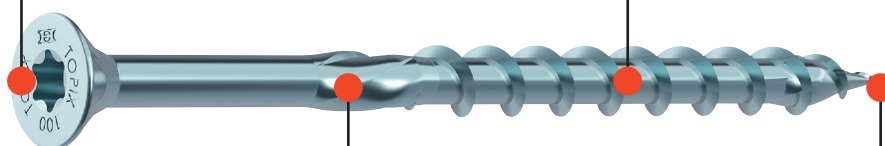
ETA-11/0284

### Countersunk head

With milling ribs to accommodate countersinking of the head

### Revolutionary thread

The thread provides secure fastening without the need for pre-drilling



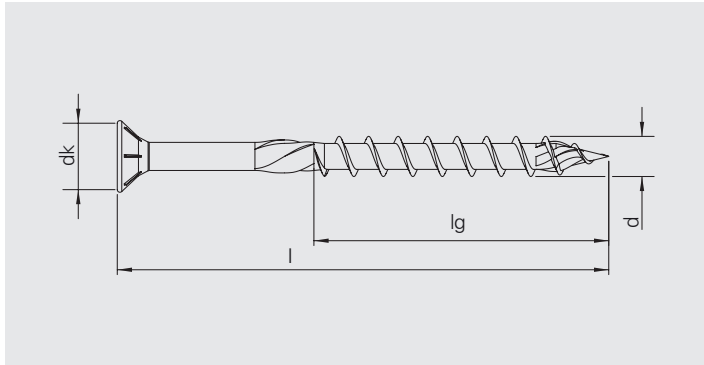
### Material and coating

Carbon steel with blue zinc (chromium-VI-free) surface. With high performance slip coating for low screwing torque

### Tip design

With milling ribs, the tip ensures fast installation with reduced splitting effect

# HT-T-CS



Countersunk head | TX drive | Full and partial thread | Bright zinc plated (A2K)

Product code	lg	dk	Drive	VPE	
HT-T-CS-FT-4,0x25	20	7,9	T-15	1000	1542321
HT-T-CS-FT-5,0x30	24	9,6	T-25	500	1542322
HT-T-CS-PT-4,0x30	20	7,9	T-15	1000	1528374
HT-T-CS-PT-4,0x35	20	7,9	T-15	500	1528378
HT-T-CS-PT-4,0x40	25	7,9	T-15	500	1528379
HT-T-CS-PT-4,0x45	25	7,9	T-15	500	1528380
HT-T-CS-PT-4,0x50	30	7,9	T-15	500	1528391
HT-T-CS-PT-4,0x60	35	7,9	T-15	200	1528393
HT-T-CS-PT-4,0x70	40	7,9	T-15	200	1527764
HT-T-CS-PT-4,5x45	25	8,9	T-25	500	1528358
HT-T-CS-PT-4,5x50	30	8,9	T-25	200	1528359
HT-T-CS-PT-4,5x60	35	8,9	T-25	200	1528360
HT-T-CS-PT-4,5x70	40	8,9	T-25	200	1528371
HT-T-CS-PT-4,5x80	50	8,9	T-25	200	1528373
HT-T-CS-PT-5,0x40	23	9,6	T-25	500	1517362
HT-T-CS-PT-5,0x50	28	9,6	T-25	200	1507712
HT-T-CS-PT-5,0x60	38	9,6	T-25	200	1517363
HT-T-CS-PT-5,0x70	42	9,6	T-25	200	1507713
HT-T-CS-PT-5,0x80	47	9,6	T-25	200	1517364
HT-T-CS-PT-5,0x90	55	9,6	T-25	200	1507714
HT-T-CS-PT-5,0x100	60	9,6	T-25	100	1517365
HT-T-CS-PT-5,0x120	60	9,6	T-25	100	1517366



Product code	lg	dk	Drive	VPE	
HT-T-CS-PT-6,0x50	30	11,6	T-25	200	1528394
HT-T-CS-PT-6,0x60	36	11,6	T-25	200	1488526
HT-T-CS-PT-6,0x70	40	11,6	T-25	200	1507835
HT-T-CS-PT-6,0x80	45	11,6	T-25	100	1488977
HT-T-CS-PT-6,0x90	55	11,6	T-25	100	1488979
HT-T-CS-PT-6,0x100	60	11,6	T-25	100	1488980
HT-T-CS-PT-6,0x110	60	11,6	T-25	100	1507836
HT-T-CS-PT-6,0x120	60	11,6	T-25	100	1488993
HT-T-CS-PT-6,0x140	60	11,6	T-25	100	1488994
HT-T-CS-PT-6,0x150	60	11,6	T-25	100	1507837
HT-T-CS-PT-6,0x160	60	11,6	T-25	100	1488997
HT-T-CS-PT-6,0x180	60	11,6	T-25	100	1488999
HT-T-CS-PT-6,0x200	60	11,6	T-25	100	1489003
HT-T-CS-PT-6,0x220	60	11,6	T-25	100	1489007
HT-T-CS-PT-6,0x240	60	11,6	T-25	100	1489008
HT-T-CS-PT-6,0x260	60	11,6	T-25	100	1489009
HT-T-CS-PT-6,0x280	60	11,6	T-25	100	1489012
HT-T-CS-PT-6,0x300	60	11,6	T-25	100	1489016
HT-T-CS-PT-8,0x80	60	14,8	T-40	100	1489315
HT-T-CS-PT-8,0x90	60	14,8	T-40	100	1507838
HT-T-CS-PT-8,0x100	60	14,8	T-40	100	1489316
HT-T-CS-PT-8,0x120	70	14,8	T-40	100	1489317
HT-T-CS-PT-8,0x140	70	14,8	T-40	100	1489318
HT-T-CS-PT-8,0x160	100	14,8	T-40	100	1489319
HT-T-CS-PT-8,0x180	100	14,8	T-40	100	1489321
HT-T-CS-PT-8,0x200	100	14,8	T-40	100	1489022
HT-T-CS-PT-8,0x220	100	14,8	T-40	50	1489323
HT-T-CS-PT-8,0x240	100	14,8	T-40	50	1489024
HT-T-CS-PT-8,0x260	100	14,8	T-40	50	1489420
HT-T-CS-PT-8,0x280	100	14,8	T-40	50	1489431
HT-T-CS-PT-8,0x300	100	14,8	T-40	50	1489432
HT-T-CS-PT-8,0x320	100	14,8	T-40	50	1489433
HT-T-CS-PT-8,0x340	100	14,8	T-40	50	1489434
HT-T-CS-PT-8,0x360	100	14,8	T-40	50	1489436
HT-T-CS-PT-8,0x380	100	14,8	T-40	50	1489437
HT-T-CS-PT-8,0x400	100	14,8	T-40	50	1489439
HT-T-CS-PT-8,0x420	100	14,8	T-40	50	1489499
HT-T-CS-PT-8,0x460	100	14,8	T-40	50	1489500
HT-T-CS-PT-8,0x500	100	14,8	T-40	50	1489511

## Washers



HW-8/25		20,0		50	1517702
---------	--	------	--	----	---------

Product code	lg	dk	Drive	VPE	
HT-T-CS-PT-10,0x80	60	18,5	T-40	50	1489512
HT-T-CS-PT-10,0x100	80	18,5	T-40	50	1489513
HT-T-CS-PT-10,0x120	80	18,5	T-40	50	1489514
HT-T-CS-PT-10,0x140	80	18,5	T-40	50	1489515
HT-T-CS-PT-10,0x160	100	18,5	T-40	50	1489516
HT-T-CS-PT-10,0x180	100	18,5	T-40	50	1489517
HT-T-CS-PT-10,0x200	100	18,5	T-40	50	1489026
HT-T-CS-PT-10,0x220	100	18,5	T-40	50	1489518
HT-T-CS-PT-10,0x240	100	18,5	T-40	50	1489519
HT-T-CS-PT-10,0x260	100	18,5	T-40	50	1489531
HT-T-CS-PT-10,0x280	100	18,5	T-40	50	1489532
HT-T-CS-PT-10,0x300	100	18,5	T-40	50	1489533
HT-T-CS-PT-10,0x320	100	18,5	T-40	50	1489534
HT-T-CS-PT-10,0x340	100	18,5	T-40	50	1489535
HT-T-CS-PT-10,0x360	100	18,5	T-40	50	1489536
HT-T-CS-PT-10,0x380	100	18,5	T-40	50	1489537
HT-T-CS-PT-10,0x400	100	18,5	T-40	50	1489538
HT-T-CS-PT-10,0x420	100	18,5	T-40	25	1489539
HT-T-CS-PT-10,0x460	100	18,5	T-40	25	1489540
HT-T-CS-PT-10,0x500	100	18,5	T-40	25	1489551
HT-T-CS-PT-8,0x500	100	14,8	T-40	50	1489511

## Washers



HW-10/25		30,0		50	1517703
----------	--	------	--	----	---------



# For powerful wood-wood or metal-wood connections

## The fastener, tuned to professional wood construction

The HT-T-FH system is suitable for constructive connections for wood on wood or metal on wood.

The fastener is suitable for many applications in professional timber construction, such as securing purlins in timber frame construction.

With the new XL flanged head, stable and secure beam joints can be created.

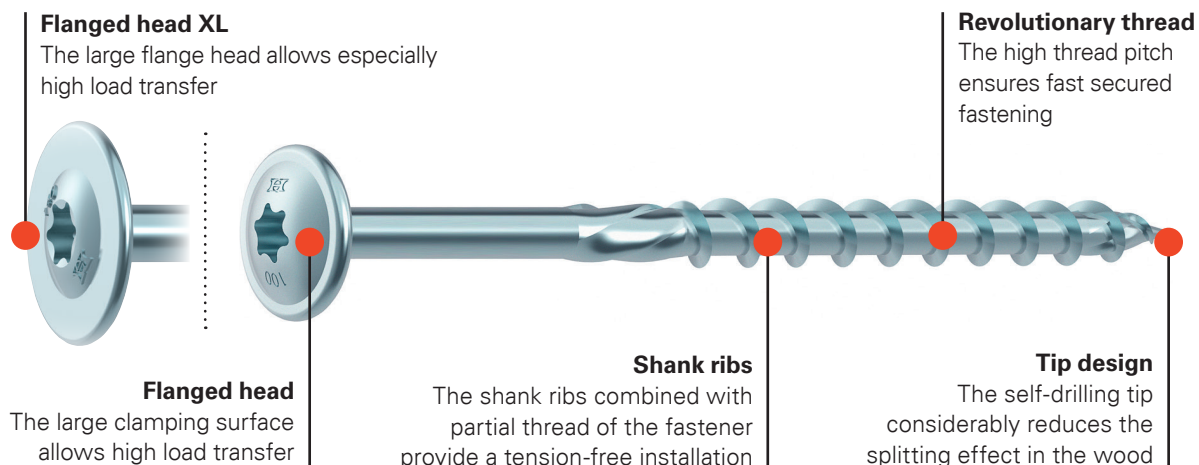
## Product information

- Very broad application spectrum
- Extremely high load transfer
- Fast and easy to use
- Revolutionary geometry

## Approvals

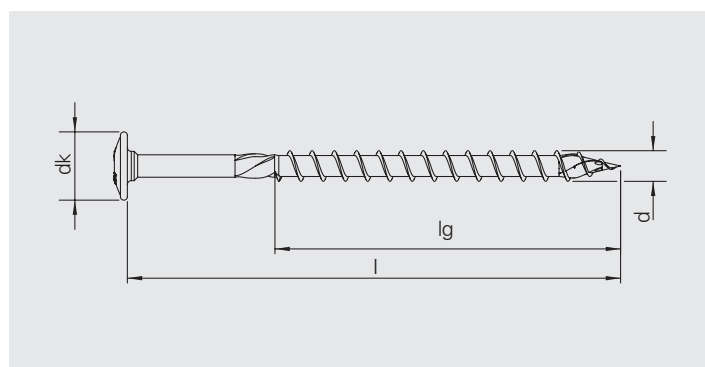


ETA-11/0284





# HT-T-FH

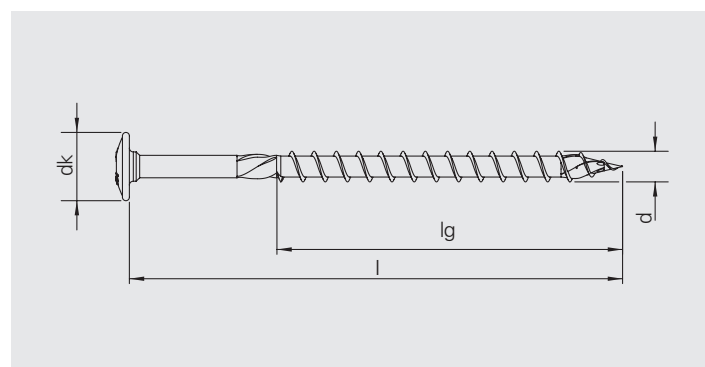


Flanged head | TX drive | Full and partial thread | Bright zinc plated (A2K)

Product code	lg	dk	Drive	VPE	
HT-T-FH-FT-6,0x40	33	14,0	T-25	200	1507716
HT-T-FH-FT-6,0x50	43	14,0	T-25	200	1507717
HT-T-FH-FT-6,0x60	53	14,0	T-25	200	1507718
HT-T-FH-FT-6,0x70	60	14,0	T-25	100	1507719
HT-T-FH-FT-6,0x80	70	14,0	T-25	100	1507720
HT-T-FH-FT-8,0x80	70	18,0	T-40	50	1507727
HT-T-FH-FT-8,0x100	80	18,0	T-40	50	1507751
HT-T-FH-FT-8,0x120	100	18,0	T-40	50	1507758
HT-T-FH-FT-10,0x80	70	22,5	T-40	50	1507814
HT-T-FH-FT-10,0x100	90	22,5	T-40	50	1507815
HT-T-FH-FT-10,0x120	100	22,5	T-40	50	1507816
HT-T-FH-PT-6,0x100	70	14,0	T-25	100	1507721
HT-T-FH-PT-6,0x120	70	14,0	T-25	100	1507722
HT-T-FH-PT-6,0x140	70	14,0	T-25	100	1507723
HT-T-FH-PT-6,0x160	70	14,0	T-25	100	1507724
HT-T-FH-PT-6,0x180	70	14,0	T-25	100	1507725
HT-T-FH-PT-6,0x200	70	14,0	T-25	100	1507726
HT-T-FH-PT-6,0x220	70	14,0	T-25	100	1517220
HT-T-FH-PT-6,0x240	70	14,0	T-25	100	1517235
HT-T-FH-PT-6,0x260	70	14,0	T-25	100	1517355
HT-T-FH-PT-6,0x280	70	14,0	T-25	100	1517357
HT-T-FH-PT-6,0x300	70	14,0	T-25	100	1517359
HT-T-FH-PT-8,0x140	100	18,0	T-40	50	1507759
HT-T-FH-PT-8,0x160	100	18,0	T-40	50	1507760
HT-T-FH-PT-8,0x180	100	18,0	T-40	50	1507771
HT-T-FH-PT-8,0x200	100	18,0	T-40	50	1507772

Product code	lg	dk	Drive	VPE	
HT-T-FH-PT-8,0x220	100	18,0	T-40	50	1507773
HT-T-FH-PT-8,0x240	100	18,0	T-40	50	1507774
HT-T-FH-PT-8,0x260	100	18,0	T-40	50	1507775
HT-T-FH-PT-8,0x280	100	18,0	T-40	50	1507776
HT-T-FH-PT-8,0x300	100	18,0	T-40	50	1507779
HT-T-FH-PT-8,0x320	100	18,0	T-40	50	1507780
HT-T-FH-PT-8,0x340	100	18,0	T-40	50	1507781
HT-T-FH-PT-8,0x360	100	18,0	T-40	50	1507783
HT-T-FH-PT-8,0x380	100	18,0	T-40	50	1507784
HT-T-FH-PT-8,0x400	100	18,0	T-40	50	1507785
HT-T-FH-PT-10,0x140	100	22,5	T-40	50	1507786
HT-T-FH-PT-10,0x160	100	22,5	T-40	50	1507787
HT-T-FH-PT-10,0x180	100	22,5	T-40	50	1507789
HT-T-FH-PT-10,0x200	100	22,5	T-40	50	1507790
HT-T-FH-PT-10,0x220	100	22,5	T-40	50	1507801
HT-T-FH-PT-10,0x240	100	22,5	T-40	50	1507802
HT-T-FH-PT-10,0x260	100	22,5	T-40	50	1507803
HT-T-FH-PT-10,0x280	100	22,5	T-40	50	1507806
HT-T-FH-PT-10,0x300	100	22,5	T-40	50	1507807
HT-T-FH-PT-10,0x320	100	22,5	T-40	50	1507808
HT-T-FH-PT-10,0x340	100	22,5	T-40	50	1507809
HT-T-FH-PT-10,0x360	100	22,5	T-40	50	1507810
HT-T-FH-PT-10,0x380	100	22,5	T-40	50	1507811
HT-T-FH-PT-10,0x400	100	22,5	T-40	50	1507812

# HT-T-FX



XL-Flanged head | TX drive | Partial thread | Blue galvanized (A2K)

Product code	lg	dk	Drive	VPE	
HT-T-FX-PT-8,0x160	100	23,0	T-40	50	1570630
HT-T-FX-PT-8,0x180	100	23,0	T-40	50	1570641
HT-T-FX-PT-8,0x200	100	23,0	T-40	50	1570642
HT-T-FX-PT-8,0x220	100	23,0	T-40	50	1570643
HT-T-FX-PT-8,0x240	100	23,0	T-40	50	1570644
HT-T-FX-PT-8,0x260	100	23,0	T-40	50	1570645
HT-T-FX-PT-8,0x280	100	23,0	T-40	50	1570646
HT-T-FX-PT-8,0x300	100	23,0	T-40	50	1570648
HT-T-FX-PT-8,0x320	100	23,0	T-40	50	1570650
HT-T-FX-PT-8,0x340	100	23,0	T-40	50	1570651
HT-T-FX-PT-8,0x360	100	23,0	T-40	50	1570653
HT-T-FX-PT-8,0x380	100	23,0	T-40	50	1570654
HT-T-FX-PT-8,0x400	100	23,0	T-40	50	1570657





# For reliable steel-wood connections

## For constructive connections with combi-hexagonal head

These fasteners provide a powerful and modern alternative to wood screws. The head combines the TX drive with a classic external hexagon drive. The two drive types makes installation easier and reduces time changing drive bits. Can be used in structural timber construction where combinations of steel and wood connections are required.

The design with full thread provides a stronger shaft bearing capacity ideal for steel-sheet to wood joints. They can be installed without the need for pre-drilling, even when close to the edge or connecting narrow components.

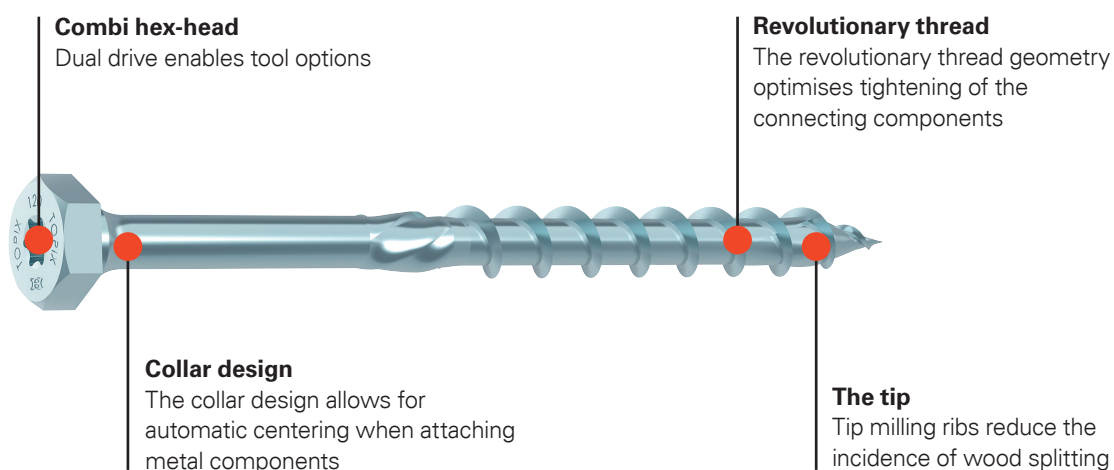
## Product information

- Dual drive options
- No pre-drilling necessary
- High contact forces
- Significantly reduced splitting tendency
- Maximum security through ETA

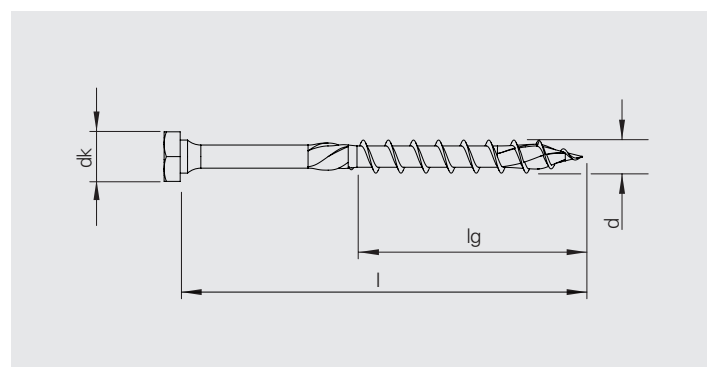
## Approvals



ETA-11/0284



# HT-T-H



Hexagonal head | TX drive | Full and partial thread | Bright zinc plated (A2K)

Product code	lg	dk	Drive	VPE	
HT-T-H13-FT-8,0x60	50	13,0	SW13/T-40	50	1528407
HT-T-H13-FT-8,0x70	60	13,0	SW13/T-40	50	1528419
HT-T-H13-FT-8,0x80	70	13,0	SW13/T-40	50	1528431
HT-T-H13-FT-8,0x100	80	13,0	SW13/T-40	50	1528439
HT-T-H15-FT-10,0x70	60	15,0	SW15/T-40	50	1528442
HT-T-H15-FT-10,0x80	70	15,0	SW15/T-40	50	1528443
HT-T-H15-FT-10,0x100	80	15,0	SW15/T-40	50	1528444
HT-T-H13-PT-8,0x120	70	13,0	SW13/T-40	50	1528257
HT-T-H13-PT-8,0x140	70	13,0	SW13/T-40	50	1528258
HT-T-H13-PT-8,0x160	100	13,0	SW13/T-40	50	1528259
HT-T-H13-PT-8,0x180	100	13,0	SW13/T-40	50	1528260
HT-T-H13-PT-8,0x200	100	13,0	SW13/T-40	50	1528262
HT-T-H13-PT-8,0x220	100	13,0	SW13/T-40	50	1528263
HT-T-H13-PT-8,0x240	100	13,0	SW13/T-40	50	1528265
HT-T-H13-PT-8,0x300	100	13,0	SW13/T-40	50	1528270
HT-T-H15-PT-10,0x120	70	15,0	SW15/T-40	50	1528282
HT-T-H15-PT-10,0x140	70	15,0	SW15/T-40	50	1528283
HT-T-H15-PT-10,0x180	100	15,0	SW15/T-40	50	1528284
HT-T-H15-PT-10,0x200	100	15,0	SW15/T-40	50	1527952
HT-T-H15-PT-10,0x260	100	15,0	SW15/T-40	50	1528285
HT-T-H15-PT-10,0x280	100	15,0	SW15/T-40	50	1528286
HT-T-H15-PT-10,0x300	100	15,0	SW15/T-40	50	1528287
HT-T-H15-PT-10,0x320	100	15,0	SW15/T-40	50	1528288
HT-T-H15-PT-10,0x360	100	15,0	SW15/T-40	50	1528289





# Full thread fasteners for very high loads

## The full thread fasteners for connections and reinforcements in timber construction

The fully threaded fasteners can be installed quickly and easily and are particularly suitable for designs with high stresses such as the fastening of wood connectors, column feet or shear-tension-reinforcements, breakthroughs and supports.

The full thread ensures absorption of high tensile and compressive forces. Thanks to the high thread pitch of the new fastener ensures energy-saving installation and assembly.

In addition, working close to the edge of materials is possible due to the thread geometry which reduces the chance of splitting of the wood. Also screwing parallel to the wood fiber at 0° angle is possible, so for example column feet can also be fixed from below.

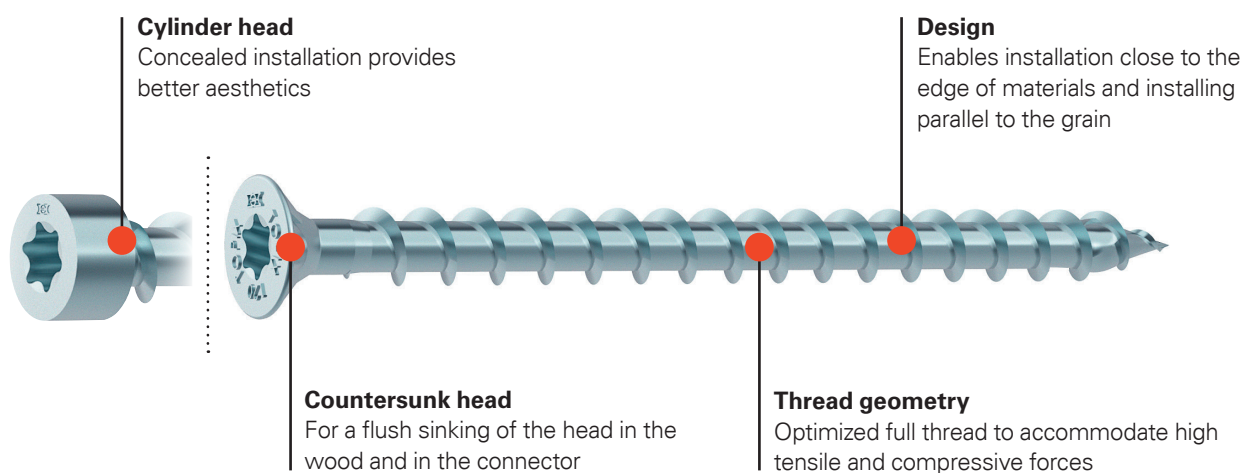
## Product information

- Transmission of very high loads
- Maximum variety of applications
- Very high efficiency
- Reliable fitting, even at 0°

## Approvals

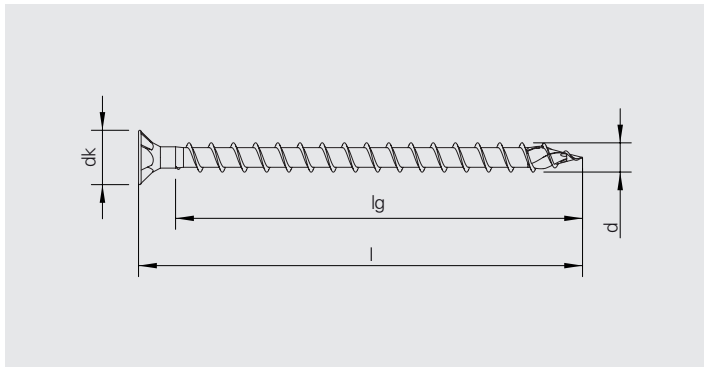


ETA-11/0284





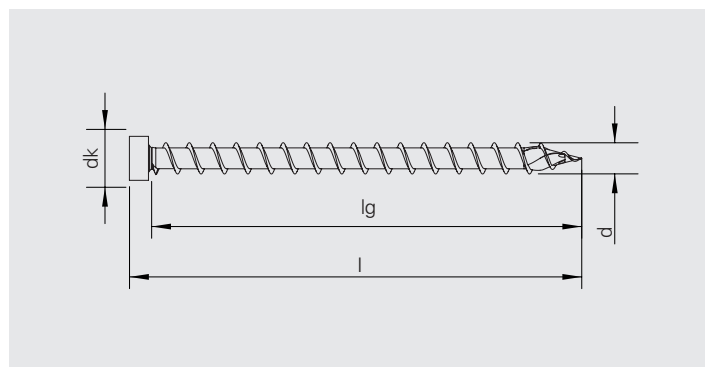
# HT-T-CS-FT



Countersunk head | TX drive | Full threaded | Bright zinc plated (A2K)

Product code	lg	dk	Drive	VPE	
HT-T-CS-FT-8,0x120	112	14,8	T-40	100	1507840
HT-T-CS-FT-8,0x160	152	14,8	T-40	100	1507841
HT-T-CS-FT-8,0x200	172	14,8	T-40	100	1601350
HT-T-CS-FT-8,0x200	192	14,8	T-40	100	1608662
HT-T-CS-FT-8,0x220	212	14,8	T-40	50	1608663
HT-T-CS-FT-8,0x240	232	14,8	T-40	50	1608664
HT-T-CS-FT-8,0x260	252	14,8	T-40	50	1608667
HT-T-CS-FT-8,0x280	272	14,8	T-40	50	1608668
HT-T-CS-FT-8,0x300	292	14,8	T-40	50	1517611
HT-T-CS-FT-8,0x340	332	14,8	T-40	50	1608669
HT-T-CS-FT-8,0x380	372	14,8	T-40	50	1608670
HT-T-CS-FT-10,0x120	110	18,5	T-40	50	1507842
HT-T-CS-FT-10,0x160	150	18,5	T-40	50	1507843
HT-T-CS-FT-10,0x200	190	18,5	T-40	50	1608681
HT-T-CS-FT-10,0x220	210	18,5	T-40	50	1608682
HT-T-CS-FT-10,0x240	230	18,5	T-40	50	1608683
HT-T-CS-FT-10,0x260	250	18,5	T-40	50	1573899
HT-T-CS-FT-10,0x280	270	18,5	T-40	50	1608684
HT-T-CS-FT-10,0x300	290	18,5	T-40	50	1608686
HT-T-CS-FT-10,0x340	330	18,5	T-40	50	1608687
HT-T-CS-FT-10,0x380	370	18,5	T-40	50	1608688

# HT-T-CH-FT



Cylinder head | TX drive | Full threaded | Bright zinc plated (A2K)

Product code	lg	dk	Drive	VPE	
HT-T-CH-FT-6,0x120	115	8,0	T-30	100	1604861
HT-T-CH-FT-6,0x140	135	8,0	T-30	100	1604866
HT-T-CH-FT-6,0x160	155	8,0	T-30	100	1604868
HT-T-CH-FT-6,0x180	175	8,0	T-30	100	1605022
HT-T-CH-FT-6,0x200	195	8,0	T-30	100	1605024
HT-T-CH-FT-8,0x120	112	12,0	T-40	100	1605025
HT-T-CH-FT-8,0x160	152	12,0	T-40	100	1605026
HT-T-CH-FT-8,0x200	172	12,0	T-40	100	1605027
HT-T-CH-FT-8,0x200	192	12,0	T-40	100	1605028
HT-T-CH-FT-8,0x220	212	12,0	T-40	50	1605051
HT-T-CH-FT-8,0x240	232	12,0	T-40	50	1605052
HT-T-CH-FT-8,0x260	252	12,0	T-40	50	1605059
HT-T-CH-FT-8,0x280	272	12,0	T-40	50	1605084
HT-T-CH-FT-8,0x300	292	12,0	T-40	50	1605085
HT-T-CH-FT-8,0x340	332	12,0	T-40	50	1605091
HT-T-CH-FT-8,0x380	372	12,0	T-40	50	1605092
HT-T-CH-FT-10,0x120	110	14,0	T-40	50	1605093
HT-T-CH-FT-10,0x160	150	14,0	T-40	50	1605095
HT-T-CH-FT-10,0x200	190	14,0	T-40	50	1605100
HT-T-CH-FT-10,0x220	210	14,0	T-40	50	1605111
HT-T-CH-FT-10,0x240	230	14,0	T-40	50	1605114
HT-T-CH-FT-10,0x260	250	14,0	T-40	50	1605118
HT-T-CH-FT-10,0x280	270	14,0	T-40	50	1605137
HT-T-CH-FT-10,0x300	290	14,0	T-40	50	1605138
HT-T-CH-FT-10,0x340	330	14,0	T-40	50	1605140
HT-T-CH-FT-10,0x380	370	14,0	T-40	50	1605148









# Fasteners for post carriers

## For use in post carriers and column feet

The attachment of wooden posts in post carriers, column feet or bottom casings requires an optimized fixing solution. This post screw with flanged head and reinforced shaft allows for good centering and support of the head on the fitting.

The installation is fast and without pre-drilling. The High-Protect coating (HP) offers a noticeable increase in corrosion protection with up to 720h in the salt spray test (according to DIN EN ISO 9227 NSS | DIN 50021 SS).

## Product information

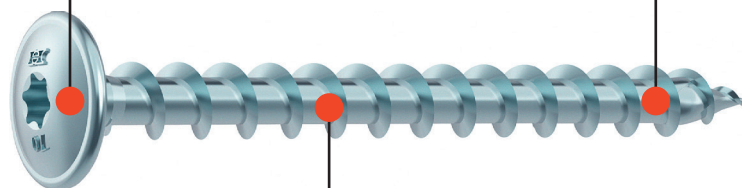
- Wide range of application
- Flanged head to accommodate varying hole sizes
- High corrosion protection
- Fast processing without pre-drilling

## Approvals



ETA-11/0284

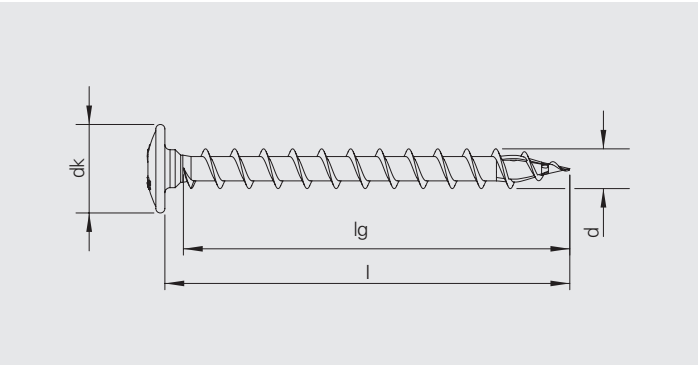
**Flanged head**  
Provides secure metal component fastening



**Tip design**  
The tip provides cutting ribs for a reduced splitting effect of the wood

**Thread geometry**  
The optimal thread pitch provides a fast and secure installation

# HT-T-FH-FT



Flanged head | TX drive | Full threaded | HP-coated

Product code	lg	dk	Drive	VPE	
HT-T-FH-FT-6,0x40	33	14,0	T-25	200	1507817
HT-T-FH-FT-6,0x50	43	14,0	T-25	200	1507818
HT-T-FH-FT-6,0x60	53	14,0	T-25	200	1507819
HT-T-FH-FT-8,0x40	35	18,0	T-40	100	1507820
HT-T-FH-FT-8,0x50	45	18,0	T-40	100	1507831
HT-T-FH-FT-8,0x60	50	18,0	T-40	100	1507832



# Fasteners for outdoor use

## The fastening system for resistant buildings in the outdoor area

The HT-S fasteners ensures a long life of wooden constructions. It is suitable for constructive wood-wood and metal-wood connections. The HT-S system is the ideal fastener for outdoor buildings or for use in aggressive corrosive environments, such as cattle sheds and salt storage halls.

Manufactured exclusively from high quality stainless steel, the decisive factor for the safety of a screw in this environment is that ratio between breaking and screwing torque.

The interaction of tip, head and thread geometry, material and coating provides a high degree of screw confidence when working in the outdoor area.

## Product information

- Stainless steel A2 1.4567
- Corrosion resistance class II
- Application in service class 3 (acc. EC5)
- Fast to install combined with reduced tendency of splitting
- Revolutionary thread geometry

## Approvals



ETA-11/0284



### Countersunk head

For a variety of outdoor applications

### Material

Stainless steel A2 screw for outdoor use and in aggressive environments (use class 3 to EC5)

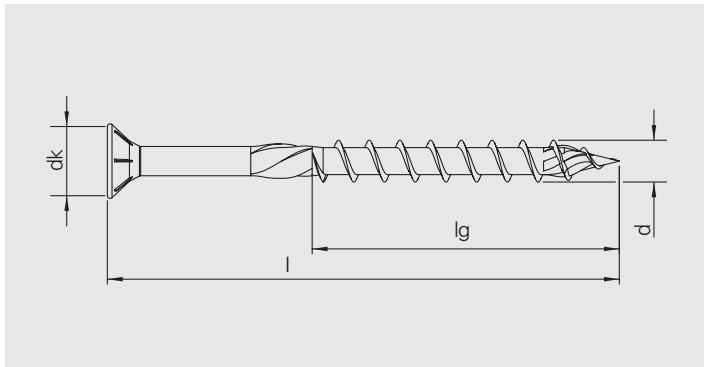


### Shaft design

Thread geometry combined with shaft milling ribs enables quick and effortless installation



# HT-S-CS



Countersunk head | TX drive | Partial thread | Stainless steel  
A2 (1.4567)

Product code	lg	dk	Drive	VPE	
HT-S-CS-PT-4,5x50	30	8,9	T-25	200	1608567
HT-S-CS-PT-4,5x60	35	8,9	T-25	200	1608569
HT-S-CS-PT-4,5x70	40	8,9	T-25	200	1575408
HT-S-CS-PT-4,5x80	50	8,9	T-25	200	1608571
HT-S-CS-PT-5,0x50	28	9,6	T-25	200	1608572
HT-S-CS-PT-5,0x60	38	9,6	T-25	200	1608589
HT-S-CS-PT-5,0x70	42	9,6	T-25	200	1608590
HT-S-CS-PT-5,0x80	47	9,6	T-25	200	1608601
HT-S-CS-PT-5,0x90	55	9,6	T-25	200	1608602
HT-S-CS-PT-5,0x100	60	9,6	T-25	100	1603664
HT-S-CS-PT-6,0x60	35	11,6	T-25	200	1507916
HT-S-CS-PT-6,0x70	40	11,6	T-25	200	1507917
HT-S-CS-PT-6,0x80	45	11,6	T-25	100	1507918
HT-S-CS-PT-6,0x90	55	11,6	T-25	100	1507919
HT-S-CS-PT-6,0x100	60	11,6	T-25	100	1507920
HT-S-CS-PT-6,0x110	60	11,6	T-25	100	1507931
HT-S-CS-PT-6,0x120	60	11,6	T-25	100	1507932
HT-S-CS-PT-6,0x140	60	11,6	T-25	100	1507933
HT-S-CS-PT-6,0x160	60	11,6	T-25	100	1507934
HT-S-CS-PT-8,0x80	60	14,8	T-40	100	1507935
HT-S-CS-PT-8,0x100	60	14,8	T-40	100	1507936
HT-S-CS-PT-8,0x120	70	14,8	T-40	100	1507937
HT-S-CS-PT-8,0x140	70	14,8	T-40	100	1507938
HT-S-CS-PT-8,0x160	100	14,8	T-40	100	1507939
HT-S-CS-PT-8,0x180	100	14,8	T-40	100	1507940
HT-S-CS-PT-8,0x200	100	14,8	T-40	100	1507941
HT-S-CS-PT-8,0x220	100	14,8	T-40	50	1507942
HT-S-CS-PT-8,0x240	100	14,8	T-40	50	1507943
HT-S-CS-PT-8,0x260	100	14,8	T-40	50	1507944
HT-S-CS-PT-8,0x280	100	14,8	T-40	50	1507945
HT-S-CS-PT-8,0x300	100	14,8	T-40	50	1507946
HT-S-CS-PT-8,0x320	100	14,8	T-40	50	1507947
HT-S-CS-PT-8,0x340	100	14,8	T-40	50	1507948
HT-S-CS-PT-8,0x360	100	14,8	T-40	50	1507949
HT-S-CS-PT-8,0x380	100	14,8	T-40	50	1507950
HT-S-CS-PT-8,0x400	100	14,8	T-40	50	1507951



# For powerful outdoor attachments

## The fastening system made of stainless steel for a reliable installation in wooden structures

The stainless steel version with flanged head optimizes the fixing of metal attachments or fittings in aggregative environments where corrosion protection is required. The enlarged clamping surface of the head allows a higher load transfer.

The revolutionary thread geometry ensures quick, easy and energy-saving installation, together with significantly reduced splitting effect of the wood. By using stainless steel A2, contact corrosion is effectively and permanently avoided.

### Product information

- Flange head
- Stainless steel A2 1.4567
- Fast and tension-free attachment
- High load transfer

### Approvals



ETA-11/0284

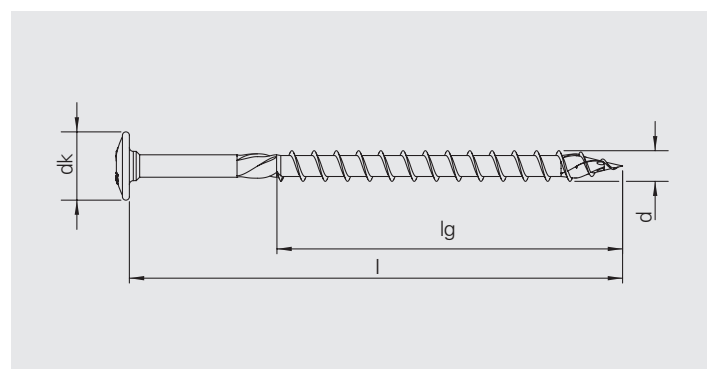


**Flange head**  
Higher load transfer and reduced mounting clearance



**Revolutionary thread**  
Reduced splitting effect and fast screwing

# HT-S-FH



Flanged head | TX drive | Full and partial thread | Stainless steel A2 (1.4567)

Product code	lg	dk	Drive	VPE	
HT-S-FH-FT-6,0x50	43	14,0	T-25	200	1507900
HT-S-FH-FT-6,0x60	53	14,0	T-25	200	1517360
HT-S-FH-FT-6,0x70	60	14,0	T-25	100	1507901
HT-S-FH-FT-6,0x80	70	14,0	T-25	100	1510596
HT-S-FH-FT-8,0x60	50	18,0	T-40	50	1507903
HT-S-FH-FT-8,0x80	70	18,0	T-40	50	1507904
HT-S-FH-FT-8,0x100	80	18,0	T-40	50	1507905
HT-S-FH-FT-8,0x120	100	18,0	T-40	50	1499849
HT-S-FH-PT-6,0x100	70	14,0	T-25	100	1507906
HT-S-FH-PT-6,0x120	70	14,0	T-25	100	1507907
HT-S-FH-PT-8,0x140	100	18,0	T-40	50	1507908
HT-S-FH-PT-8,0x160	100	18,0	T-40	50	1507909
HT-S-FH-PT-8,0x180	100	18,0	T-40	50	1507910
HT-S-FH-PT-8,0x200	100	18,0	T-40	50	1507911
HT-S-FH-PT-8,0x220	100	18,0	T-40	50	1507912
HT-S-FH-PT-8,0x240	100	18,0	T-40	50	1507913
HT-S-FH-PT-8,0x260	100	18,0	T-40	50	1507914
HT-S-FH-PT-8,0x280	100	18,0	T-40	50	1517361
HT-S-FH-PT-8,0x300	100	18,0	T-40	50	1507915





# Better aesthetics for innovative façades

## For installations where aesthetic integrity is required

Façades made of wood are becoming increasingly popular. For attaching the profiled timber to a wooden substructure, SFS provides the unique façade fastener. Like all members of the HUT family, this fastener also has the patented full thread with contracting effect. Weather resistant in stainless steel A2 version and with a small raised countersunk head this solution meets the high requirements for fastening technology.

The requirements for the façade design are not only visually, but also technically very high: the façade must be reliably fixed on the substructure, permanently safe and weather-resistant. In addition, the mounting points should be as invisible as possible. The HUT façade fastener is ideal for this application.

## Product information

- Attracting and fixing in one step
- Gap-free pulling
- Wide variety of applications
- Smallest edge distances without splitting
- Fast processing

## Approvals

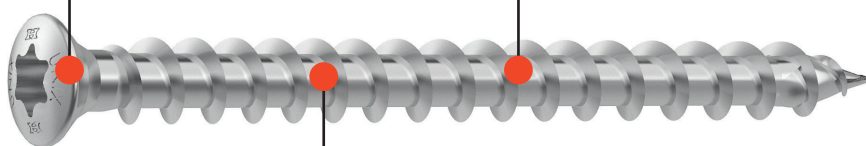


ETA-11/0452



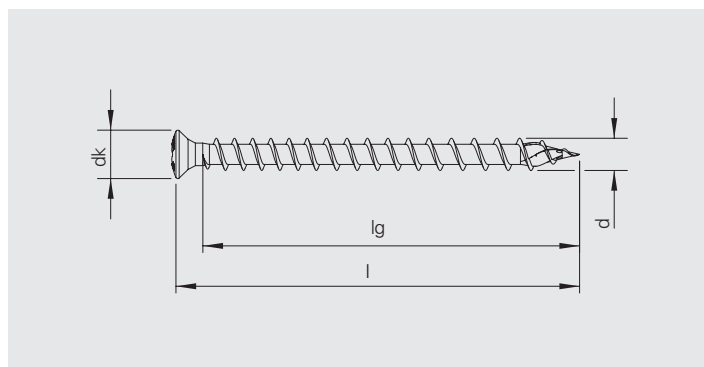
**Small raised countersunk head**  
For a visual attractive assembly and less trapped moisture

**Full thread**  
The full thread ensures gap-free connection between materials



**Thread geometry**  
Revolutionary thread geometry reduces risk of wood splitting

# HUT-S-RCS



Raised countersunk head | TX drive | Full threaded | Stainless steel A2 (1.4567)

Product code	lg	dk	Drive	VPE	
HUT-S-RCS-FT-4,5x50	46	7,2	T-20	200	1489556
HUT-S-RCS-FT-4,5x60	56	7,2	T-20	200	1489152
HUT-S-RCS-FT-4,5x70	66	7,2	T-20	200	1489557
HUT-S-RCS-FT-4,5x80	76	7,2	T-20	200	1489558
HUT-S-RCS-FT-5,0x40	36	7,2	T-20	200	1489559
HUT-S-RCS-FT-5,0x50	46	7,2	T-20	200	1489162
HUT-S-RCS-FT-5,0x60	56	7,2	T-20	200	1489592
HUT-S-RCS-FT-5,0x70	66	7,2	T-20	200	1489593
HUT-S-RCS-FT-5,0x80	76	7,2	T-20	200	1489595



SFS Group Fastening Technology Ltd.  
Division Construction  
153 Kirkstall Road  
Leeds, LS4 2AT

0330 0555 888  
[enquiries@sfs.biz](mailto:enquiries@sfs.biz)  
[www.sfsintec.co.uk](http://www.sfsintec.co.uk)