

Complete Fire Protection Ltd

Manufacturers of Intumescent Products

FIREPLUG PIPE COLLARS

FIREPLUG Pipe Collars

Description

Fireplug canisters are available to fit most standard pipe sizes from 50mm upwards.

PIPE SIZE	CODE
50mm	FPC50
75mm	FPC75
100mm	FPC100
125mm	FPC125
150mm	FPC150
200mm	FPC200

*Other sizes available on request

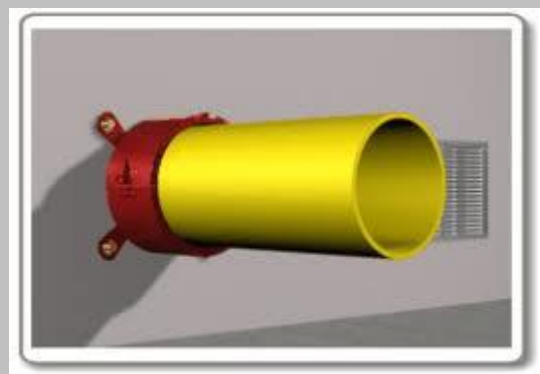
Fireplug FPC Pipe Closers are made using Firefly 101/102 and are designed to surface mount around the pipe penetration. They can be used on either solid walls/floors or partition type hollow walls/floors subject to adequate approved fixings being incorporated. The steel canister is 56mm deep and filled with intumescent.

ACTION

Under the action of heat approved plastic pipes soften as the intumescent expands, sealing the void left by the disappearing pipe.

PERFORMANCE

Fireplug FPC has been tested up to 4 hours and at the Building Test Centre to British Standards BS476: Part 22: 1987: Clause 5, following the methodology of PREN 1366.3 (1993), and 120 minutes insulation and integrity was achieved. Full test reports are available on request.



APPLICATION

Fireplug canisters are fixed around the pipe and the toggle clip engaged. The canister is then slipped along the pipe to the wall or ceiling. The canister is then fixed to the wall or ceiling. The fixings used on the test were four number 50mm wood screws, screwed directly into the aerated block wall (Thermalite, Celcon, etc.). If fitting to concrete floors or brick walls 65mm steel screws or preferably expanded anchors may be used. The opposite side of the wall/floor to the Fireplug FPC can then be back filled with sand and cement if required.