

Forticrete[®]masonry



Architectural masonry products

Precast and cast stone special shapes

Precast elements at
Clearwater Court, Reading.



Colours

Forticrete Precast elements are available in colours that are blended to those of the Masonry ranges. Additional variations can be created to specification requirements.

Etched: Ivory, Yorkstone, Sandstone, Flint, Straw, Hamstone, Bathstone, Steel Grey.

Shot-blasted: Ivory, Flint, Pewter, Bathstone, Straw, Yorkstone, Peat, Hamstone, Autumn, Terracotta, Sandstone, Russet, Damson, Sports Green, Spruce, Hallmark Diamond, Steel Grey.

The quality is assured

Forticrete's manufacturing methods and strict adherence to a BSI approved Quality Assurance scheme to BS EN ISO 9001:2000 ensures consistent product quality, whether it's a bespoke, one-off element or multiples made to match time-after-time.

What's more, Forticrete's manufacturing facilities accommodate flowline production, ensuring that the elements you require are manufactured to the tightest lead times, all with the unmistakable hallmark of Forticrete quality.

Build with total design freedom

Forticrete's production of specialist Precast elements has developed into a service which offers high quality detailing with a virtually limitless capability.

Our facility can produce bespoke detailing in a vast array of designs, either to blend into an Architectural Masonry structure or to create stunning highlights within large expanses of masonry or brickwork. Features such as thresholds, arches, circular columns, corbels, cills, lintels, radius details and unique window surrounds are all achievable.

High quality bespoke Precast concrete detailing

The use of Forticrete Precast elements can help to recreate the impression of the grandiose scale of past eras or provide finishing touches to a building of any size, no matter how large or small, to make it stand out from the crowd.

A range of standard units is available, to fulfill the needs for the more commonplace copings and airbricks, but bespoke elements can be created, each hand moulded by experienced craftsmen to match your designs and to realise your ideals.

Forticrete Precast elements have a mean compressive strength of 25N/mm² and a density of 2300 kg/m³.



Shot-blasted Precast on the Raich Carter Sports Centre, Sunderland.



Colours

Polished Precast units can be created to blend with the Florentine, Venezia and Medici colour ranges, as follows:

Florentine/Venezia: Ivory, Flint, Pewter, Bathstone, Straw, Yorkstone, Peat, Hamstone, Autumn, Terracotta, Sandstone, Damson, Sports Green, Spruce, Hallmark Diamond, Steel Grey.

Medici: Bellini, Veronese, Firenze, Bronzino, Romano, Pisano, Carrara, Spirito.

Additionally, specialist aggregates or colour variations can be provided to meet specific requirements.

Add polish to your creativity

Forticrete supplies you with the bespoke elements you need to deliver polished appeal. The ability to provide bespoke special shapes with a highly polished surface once again sets us apart in the industry.

Whether it's detailing to complement the various polished ranges, or individual units to suit your specific designs, the Forticrete service is a unique capability in UK manufacturing.

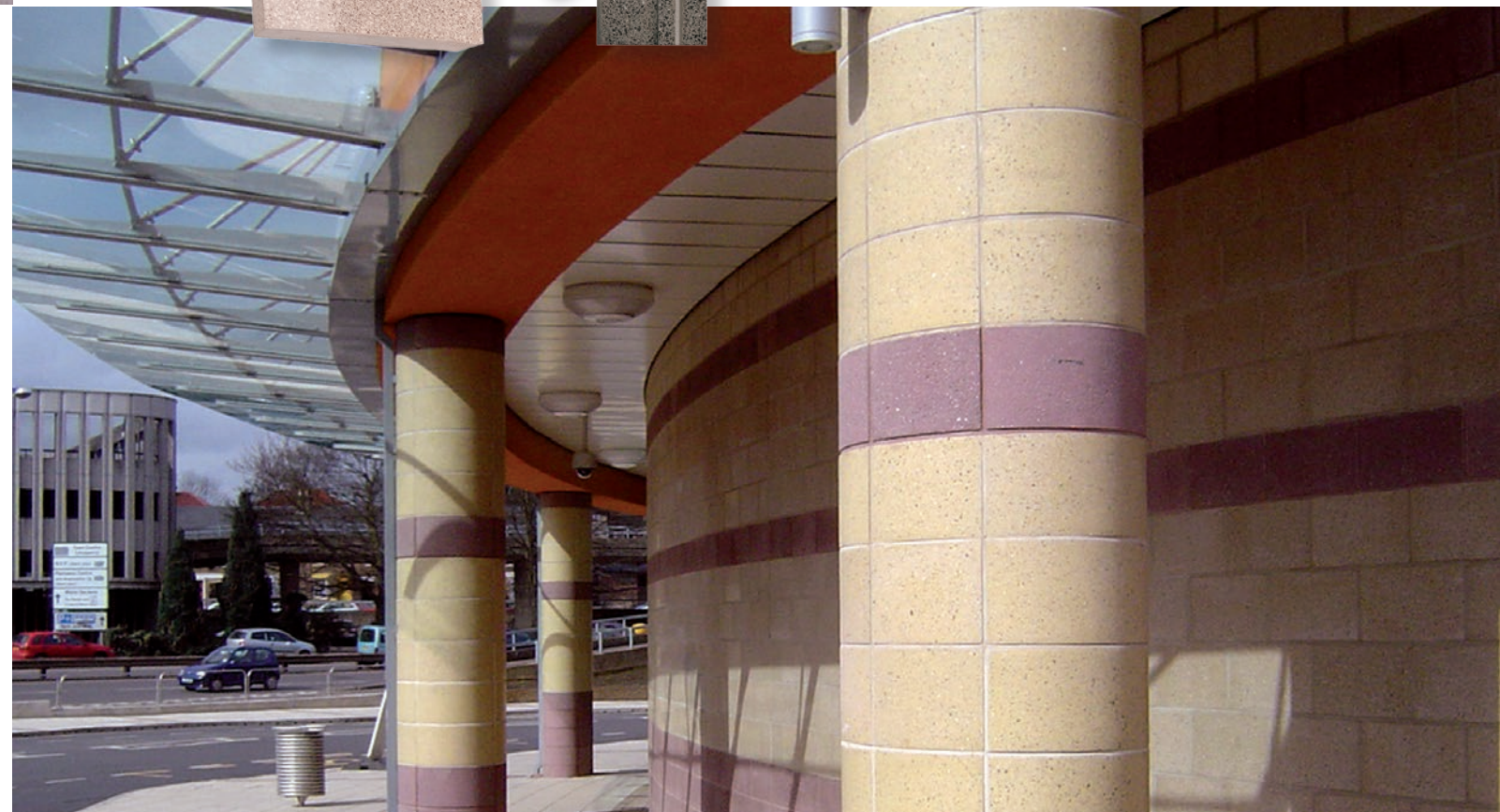
Polished Precast units have a minimum strength of 25 N/mm² which is achievable for unsymmetrical units. The strength may increase for units that are cast in a rectangle or square shape with no deviation.

Elements

All units are made to order.

Reinforcement & fixing

The only reinforcement that is incorporated into Forticrete Precast units is for handling within the factory manufacturing environment. Design for structural reinforcement and specialist fixings should be detailed by the structural engineer carrying out the design for the specific project. The lead times for Polished Precast elements will be reduced considerably if the above information is supplied with the order.



Polished Precast at Riverside,
Hemel Hempstead.



Elements

All units are made to order.

Drawing references

Where purpose-made elements are specified, detail drawings should include requirements for throatings, stoolings, rebates for water bars and lead flashings, mortises for ties, joint profiles for ashlar (channelled or vee), etc.

Reinforcement and fixing

The only reinforcement that is incorporated into Forticrete Artform units is for handling within the factory manufacturing environment. Design for structural reinforcement and specialist fixing should be detailed by the structural engineer carrying out the design for the specific project.

The lead times for Artform elements will be reduced considerably if the above information is supplied with the order.



We've made building an artform

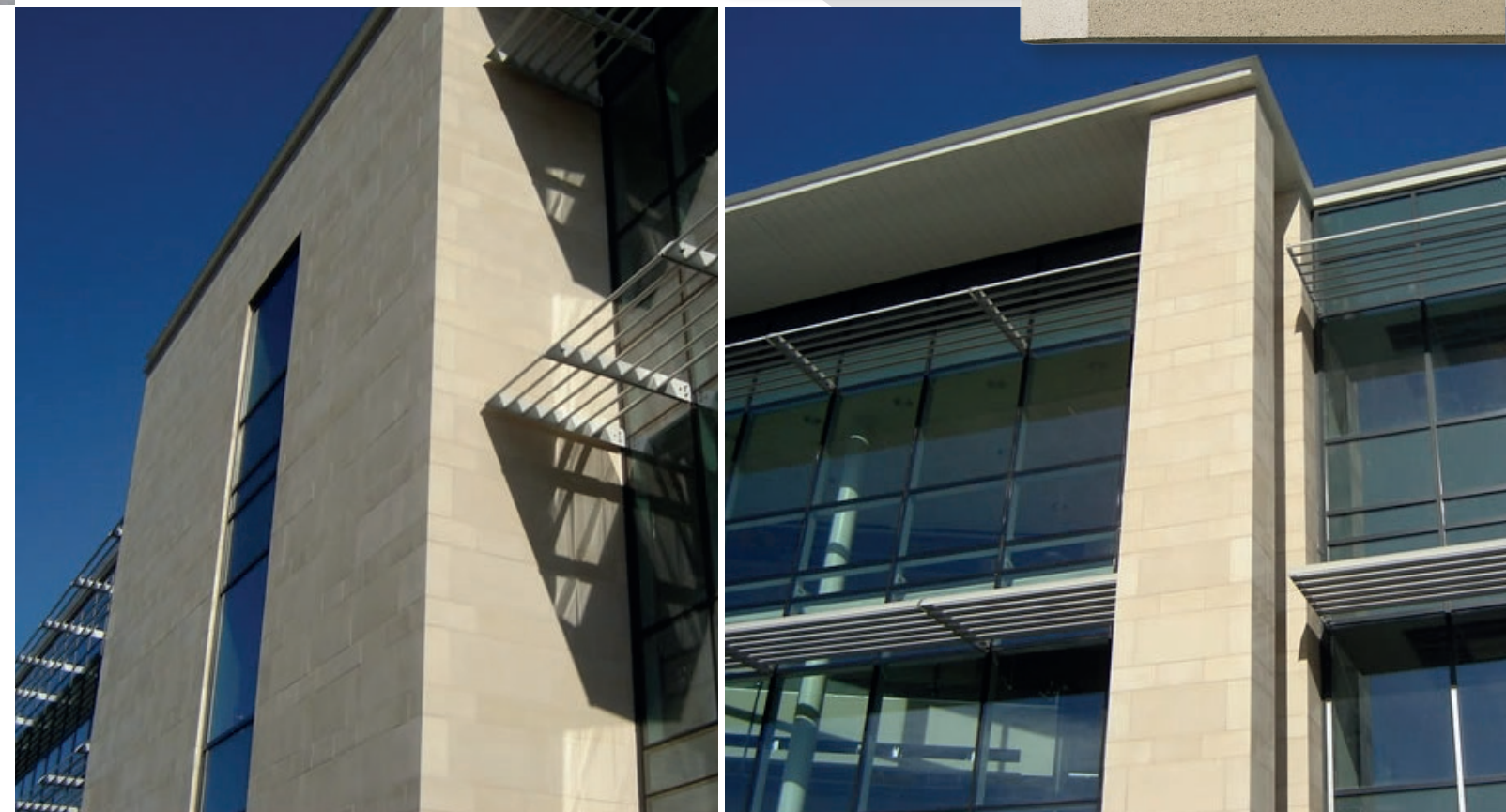
With its fine detailing elements and a naturally weathered appearance, the structural strength of precast concrete is combined with the fine definition of stone detailing in Artform, a wet-cast material which can be moulded to virtually any shape.

Artform creates detailing which has an immediately established, naturally weathered appeal, either as a stand-alone product in its own right or as a wet-cast equivalent to the Cast Stone range.

Artform elements are available as standard in six 'natural' colour variations to complement the Forticrete Cast Stone range: Portland, Bath, Buff, Holyrood, Glamis Red, Sherwood. Non-standard colours can be created for projects, dependent on volumes.

With a minimum compressive strength of 25N/mm², Artform is a structural material with load-bearing capabilities yet it can be moulded to low tolerances, ensuring accurately dimensioned elements with sharp arrises, even on complex shapes.

It is a material with low surface absorption offering improved weathering characteristics for detailing and with high impact resistance, to withstand rough handling on site.



Artform at Manchester Business Park,
Aviator Way, Manchester.



Our unrivalled quality is cast in stone

Forticrete's Cast Stone is a perfect example of advanced technology and time honoured craftsmanship working together in harmony. The result is a wide range of products with unrivalled quality and no compromise to aesthetic appeal.

As one of the UK's leading manufacturers of Cast Stone products, Forticrete is able to provide unrivalled guidance in all aspects of their use, from specification to procurement and on-site performance.

There are three options to purchasing Forticrete Cast Stone elements:

- **Standard Profiles** – a broad range of Standard components with a variety of dimensional options
- **Stone In Stock** – a number of the most popular standard items available from stock in Bath colour
- **Bespoke Items** – hand made by craftsmen to your individual design.

Quality without compromise

All Forticrete Cast Stone products are manufactured under an ISO 9001:2008 quality management system. Products that meet the specific requirements of the harmonised standards EN 771-5:2011 - Manufactured stone masonry units, and EN 845-2:2003 - Lintels, will be CE marked accordingly. Declarations of Performance are available at www.forticrete-ce.com.

All other products continue to be manufactured in accordance with the United Kingdom Cast Stone Association's Technical Specification and carry the UKCSA Quality Mark, and also BS 1217:2008 - Cast Stone; BS 5642-1 - Specification for window sills of precast concrete, cast stone, clayware, slate and natural stone; and BS 5642-2 - Specification for copings of precast concrete, cast stone, clayware, slate and natural stone.

Compressive Strength:

All Forticrete Cast Stone is manufactured with a design compressive strength potential in excess of 35 MPa, (35 N/mm²) when reaching concrete maturity.

Density:

Typical Material Density = 2100 Kg/m³

Thermal Conductivity:

Exposed: 1.56 W/mK
Protected: 1.46 W/mK

Moisture Movement (typical): 3.5%

Weathering:

Weathering class: CAT to BS 1217 and UKCSA Specification. Factors such as design, detailing, exposure, climate and local environment all contribute to the way in which Cast Stone will weather. Forticrete Cast Stone will weather in much the same way as natural stone in similar circumstances.

Mortar:

Mortar used for the installation of Cast Stone elements should not be stronger than Designation III (1:1:5/6).

Handling Reinforcement:

Any units over 600mm in length contain one or more steel bars. These are included to comply with Health and Safety Regulations, relating to the handling of the product by site operatives.

Fixings for support, restraint and handling

Some Forticrete Cast Stone elements will incorporate 100mm stainless steel dovetail slots to restrain lateral movement in vertical units i.e. window jambs, door jambs etc. M16 sockets may also be used for handling purposes in the factory.

Colours



Forticrete has the ability to create non-standard colours for projects, dependent on volumes. Please contact your local Area Sales Manager for details.

The reproduction of colour is as close as possible within the photographic and printing processes. **We recommend that you view actual product samples prior to ordering.**



Cast Stone at Weir House, Tameside.



Limited only by your imagination

The standard range offers you a broad selection of the most popular detailing elements made from existing moulds, which saves time and cost, giving you new design opportunities.

Each element is available in a range of sizes and designs, and the range includes quoins, plinths, string courses, cills, heads, a selection of window surrounds including bullseyes and arches, door and porch surrounds, corbels, copings for walls, roofs and chimneys, pier caps and spheres, balustrades and porticos.

Forticrete Cast Stone is manufactured from high grade limestone and sandstone aggregates that have been chosen for their known performance and reliable quality. The cement, pigments and waterproofing agents all conform to their appropriate British or European Standard. Forticrete's established factories use controlled processing that ensures an accurate mix of the raw materials is produced.

Forticrete Cast Stone elements are created from an homogeneous mix, without using a 'backing' material. This ensures that no undue stresses are built up within the unit.

The major technical performance characteristics of Forticrete Cast Stone exceed the requirements of BS 1217 and the United Kingdom Cast Stone Association specification.

Forticrete has the ability and experience to create purpose-made products to your precise specification. Each piece of Forticrete Cast Stone is available in a choice of six standard colours that are intended to replicate the natural stones available throughout the UK. In common with natural stone, Forticrete Cast Stone is through-coloured.

Bespoke cast stone

In the majority of cases, Forticrete's skilled craftsmen can fulfill your design requirements for bespoke items and turn them into reality, the only limitation is that Forticrete must be able to de-mould and handle the units. The designs you have in mind may be inspired by classical architecture or more decorative styles. Unusual sizes, intricate or irregular shapes and precise matches for special colours.

Forticrete's bespoke service offers you the maximum design freedom. It's the ideal service whether you are including distinctive design touches in a new build project, blending seamlessly into a sensitive environment or undertaking restoration work. Individual quotations for these items will be provided on receipt of instructions. In the rare instance that your bespoke designs are not achievable, Forticrete's experienced sales and technical team are able to suggest alternatives that will complement your original ideas.



When used in conjunction with a unique bespoke colour matching capability, Forticrete can fulfil your cast stone requirements irrespective of their complexity in colour and finish.

Bespoke colours

Forticrete has a library of over 400 Cast Stone colours that can be reproduced with accuracy at any time. Should you require a specific colour that is not in the standard range, this can be provided at a supplementary cost.

Bespoke cast stone

Forticrete can offer you engraved cast stone units, which could be simple namestones or logos, or a combination of both. This instantly differentiates your building, making it immediately recognisable and unique.



Cast Stone at Durham University.



Reinforcement and fixing

The only reinforcement that is incorporated into Forticrete PreCast Products is for handling within the factory manufacturing environment. Design for structural reinforcement and specialist fixings should be detailed by the structural engineer carrying out the design for the specific project. The lead times for precast products will be reduced considerably if the above information is supplied with the order.



Product samples

The colours reproduced within this brochure are as accurate as the photographic and printing processes will allow. Where colour matching is critical, you are advised to view actual product samples.

These are readily available via our Anstone office by calling **01909 775000** or the sample request area of our website – **www.forticrete.co.uk**

For larger projects, sample panels can be provided.

Masonry Sales enquiries:

Forticrete Limited,
Thornley Station Industrial Estate,
Salters Lane, Shotton Colliery,
Durham
DH6 2QA

Tel: 01429 838001

Fax: 01429 836206

E-mail: masonry@forticrete.com

All relevant Forticrete products are CE marked. Declarations of Performance are available at www.forticrete-ce.com

Information on the complete range of Forticrete products can be found on the Internet at **www.forticrete.co.uk**

Forticrete, Artform, Florentine and Medici are registered trademarks of Forticrete Ltd.

Cast Stone, Venezia, Sparstone and Fairface are trademarks of Forticrete Ltd.

CRH is a registered trademark of CRH plc.

This document does not form part of any contract and Forticrete cannot accept liability for any errors or omissions.

In order to maintain its position as a market leader, Forticrete operates a policy of continuous product development and therefore reserves the right to alter specifications without notice.

Although the instructions contained in this publication and any other information published by Forticrete are believed to be accurate at the date of publication, they are strictly for guidance only and Forticrete accepts no liability in relation to their use or for any losses, howsoever caused. You are responsible for taking all reasonable steps to ensure your use of the goods/products conforms to all applicable health and safety requirements from time to time. If in doubt, please consult appropriately qualified persons. All products sold by Forticrete are sold subject to Forticrete's Terms and Conditions of Sale, a copy of which is available on request.

© Forticrete Ltd. 2013. All rights reserved.



Scan the QR code with your smartphone for instant access to our website.

Forticrete[®]masonry

