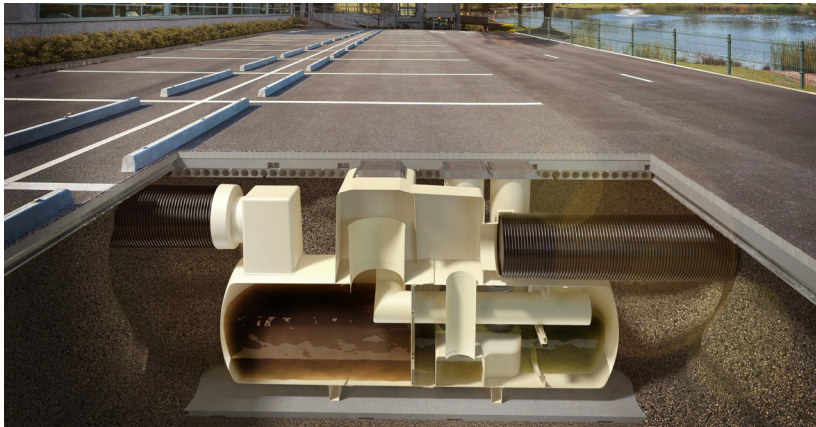
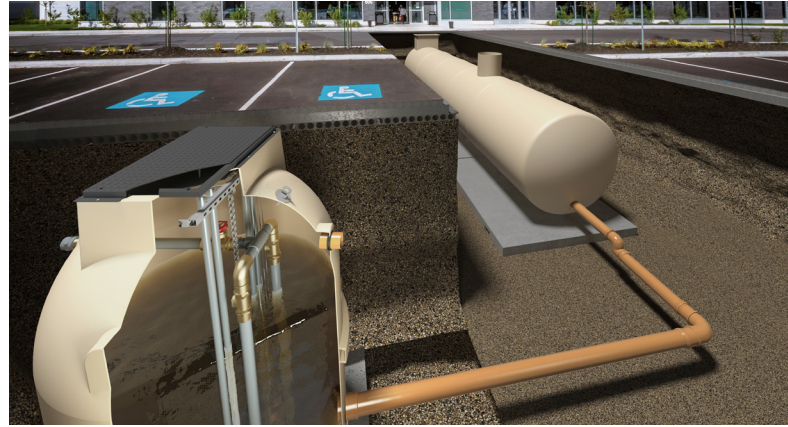


Water Management Solutions



AquaCore® Sustainable Drainage Systems

Reliable and trusted surface water management solutions



kingspan.co.uk/klargester



A fully supported SuDS treatment solution



Water is a precious resource. We must manage it responsibly. In order for your SuDS system to be eligible for adoption, you must align it to the Design and Construction Guidance*, from Sewerage Sector Guidance (appendix C) and CIRIA C753 The SuDS Manual.

*This guidance is for England only.
For Scotland refer to 'Sewers for Scotland'.
For Wales refer to 'Statutory SuDS Standards Wales'.

Kingspan Klargester have been pioneers in this field for decades, with 65 years experience in manufacturing innovative ways to treat, store and manage the flow of water.

We can design and build a full SuDS solution tailored to your exact needs. Our AquaCore® solutions are reliable and trusted and come with Kingspan's expert service, maintenance and smart monitoring package for your complete peace of mind.

Our UK based factory fitted solutions may reduce on-site time and cost, compared with other SuDS offerings in the market. With expertly designed individual components for each part of the SuDS management train, we can help you with any scale of commercial project.

Talk to our expert team today at
klargester@kingspan.com

AquaCore® trusted SuDS solutions from the experts in Water Management

Our aim is to future-proof your SuDS solution in line with the Design and Construction Guidance, from Sewerage Sector Guidance (appendix C) and CIRIA C753 The SuDS Manual, whilst offering the following benefits:

- Trusted solution from manufacturers with 65 years' industry experience
- UK factory fitted solutions which reduce on site time and cost
- Easy access for maintenance across all SuDS elements
- A fully managed solution including service and monitoring via Smart Serv Pro remote software (optional extra)

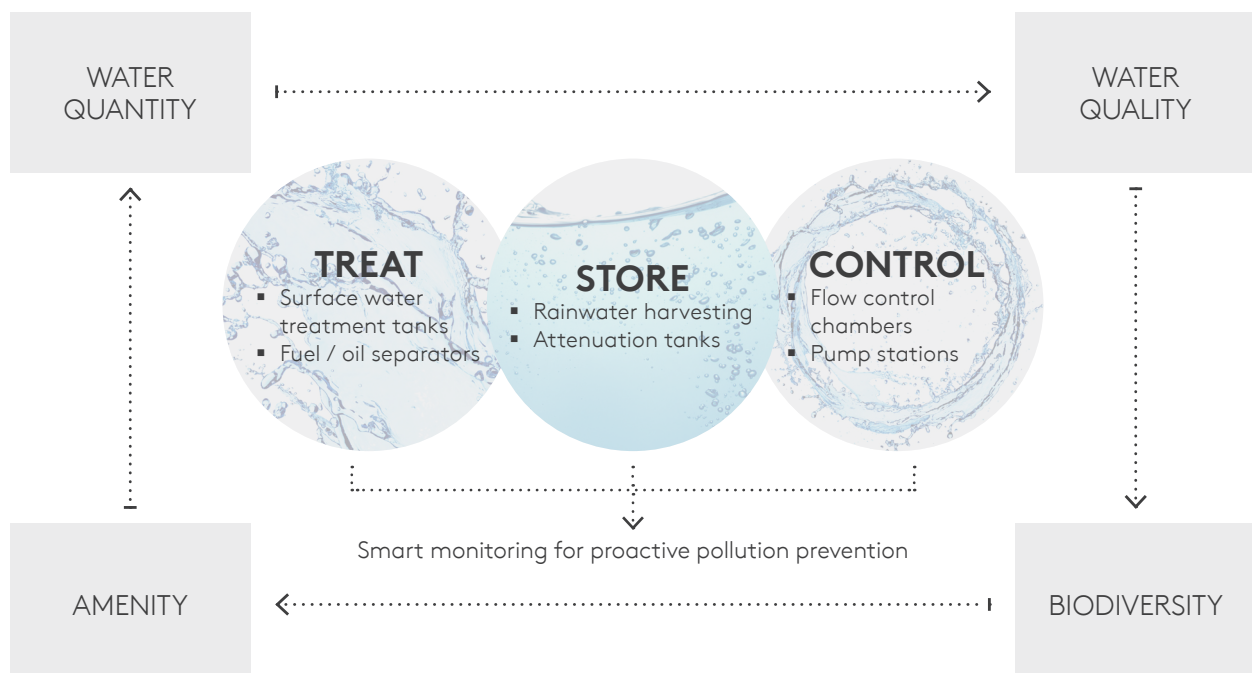
Find out more about our service and monitoring packages for SuDS, including our Smart Serv Pro remote monitoring solution

E: FMservices@kingspan.com
T: 0333 240 6868



Contact your local Klargester team today to discuss your project

E: klargester@kingspan.com | T: 01296 633033

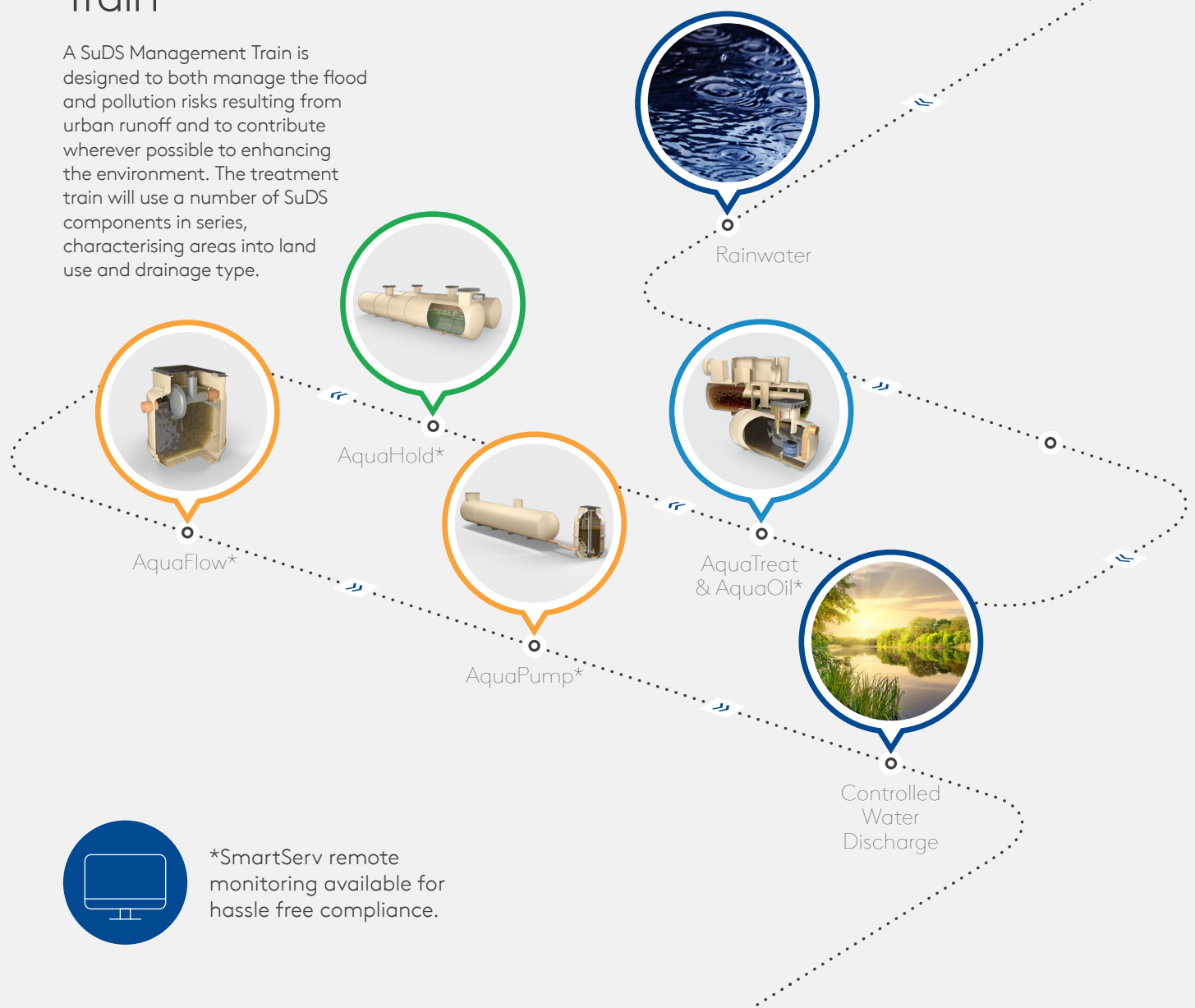


Supporting your SuDS Management Train

The twin forces of climate change and urbanisation have brought about a dramatic rethink in our approach to water management, including water quality, water quantity and biodiversity and amenities.

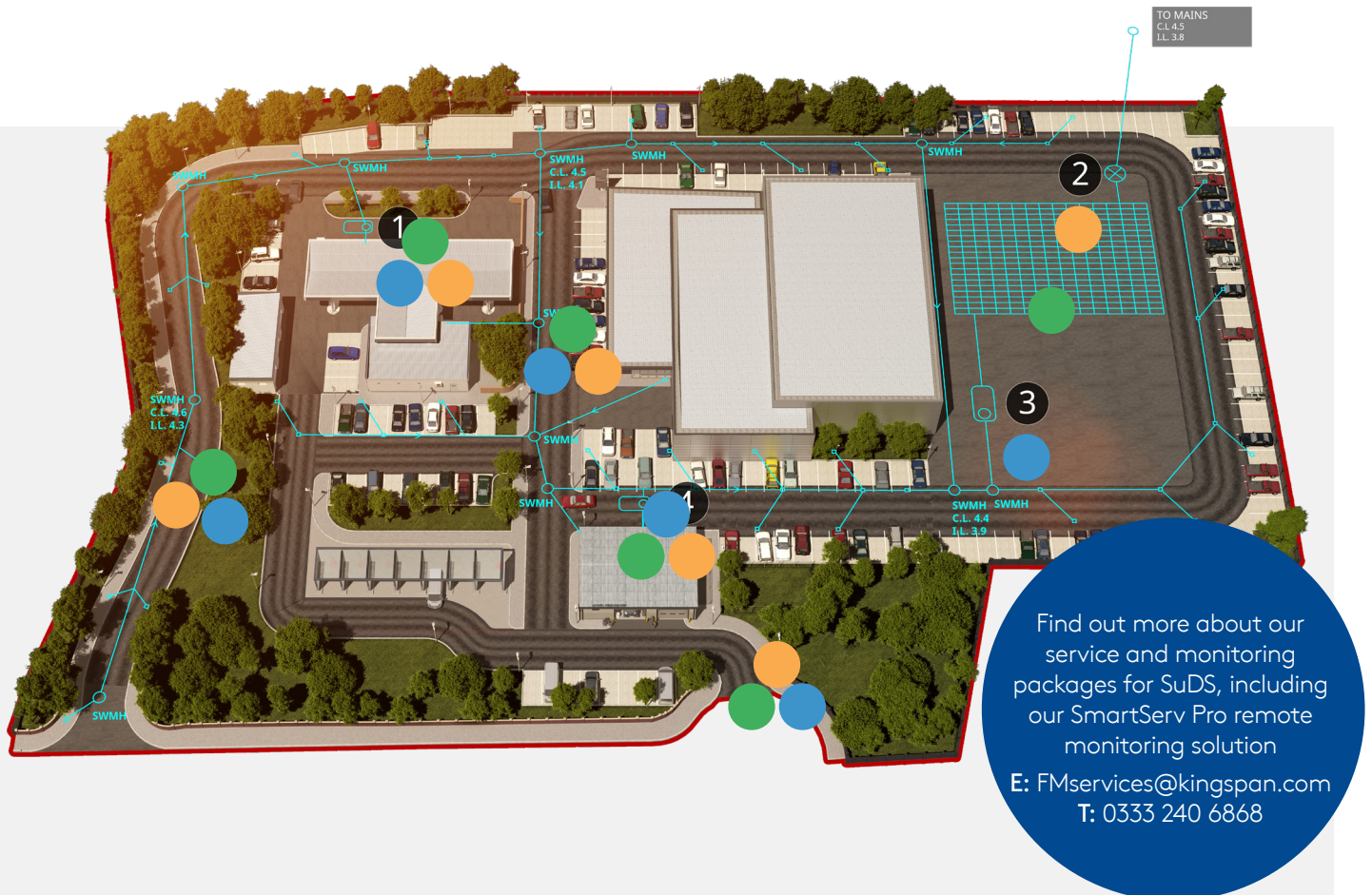
SuDS Management Train

A SuDS Management Train is designed to both manage the flood and pollution risks resulting from urban runoff and to contribute wherever possible to enhancing the environment. The treatment train will use a number of SuDS components in series, characterising areas into land use and drainage type.



Treat, Store and Control

Kingspan Klargester's AquaCore® range is suitable for multiple applications, on and off-mains.



TREAT



AquaTreat
Full Retention
GRP Surface
Water Treatment
Separators



AquaOil
AquaOil full
retention MDPE
and GRP
separators/
bypass MDPE
and GRP separators

STORE

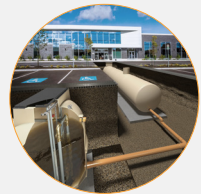


AquaHold
Master and
Storage Tanks

CONTROL



AquaFlow
SF Horizontal
Flow Control
and FC Vertical
Flow Control
solutions



AquaPump
PU vertical
and PC
horizontal
range

AquaTreat

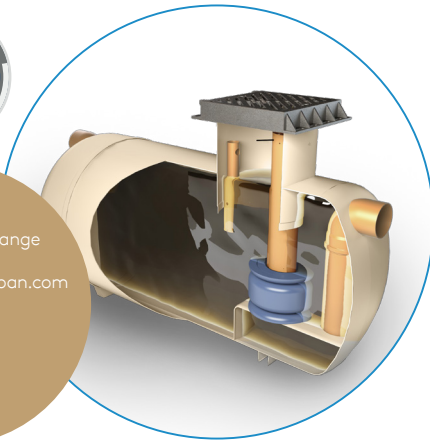
For more information including technical specifications, scan here



The Klargester AquaTreat Full Retention GRP Surface Water Treatment Separators range helps to reduce pollution in line with SuDS Mitigation Indices by removing metals, suspended solids and hydrocarbons from surface water.



Ask us about our range of flow rates
klargestinfo@kingspan.com



AquaTreat

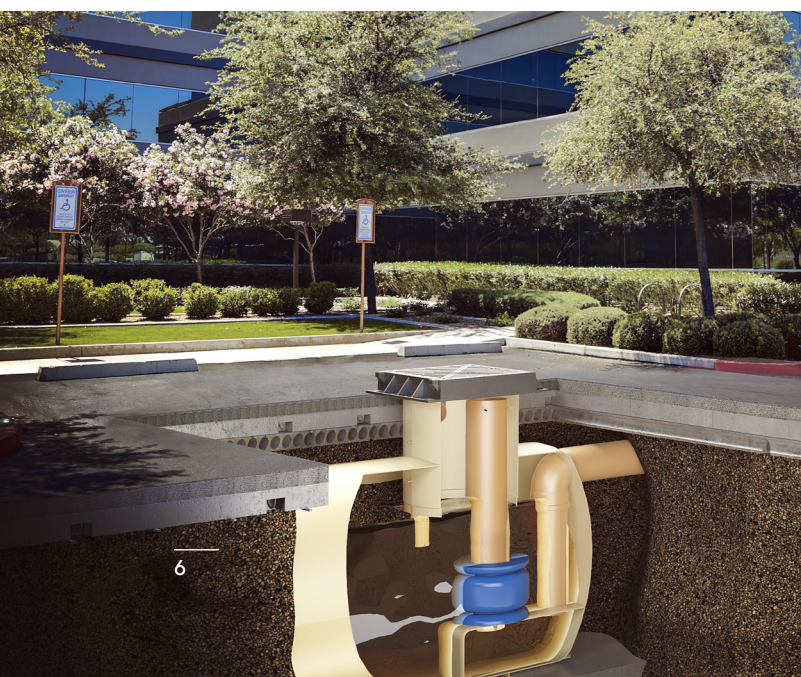
Full Retention GRP Surface Water Treatment Separators range

Our surface water treatment range is suitable for a wide range of SuDS schemes such as industrial estates, permitted sites and roadways.

Benefits

- Light and easy to install
- Easier servicing, with maintenance from ground level
- Vent points within necks
- SmartServ Pro remote monitoring available (as optional extra)
- Inclusive of silt storage
- Auto closure device included
- Deep inverts available for 2.6 diameter units

*View terms online at <https://www.kingspan.com/gb/en-gb/products/wastewater-management/warranty-terms>



3 year warranty when registered online and must be serviced by a Kingspan engineer or accredited service partner. Other terms and conditions apply*



Scan the QR code to register your warranty



Ask us about our Smart Commissioning package - FMservices@kingspan.com

Treat

Store

Control

AquaOil

For more information including technical specifications, scan here



3 year warranty when registered online and must be serviced by a Kingspan engineer or accredited service partner. Other terms and conditions apply*



Scan the QR code to register your warranty

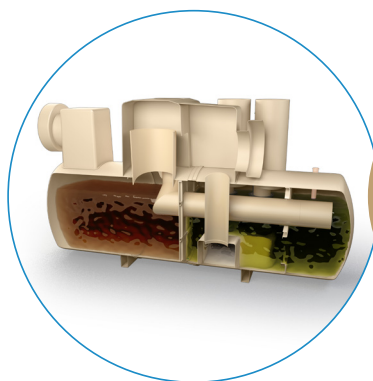


Ask us about our Smart Commissioning package - FMservices@kingspan.com

AquaOil full retention MDPE and GRP separators/bypass MDPE and GRP separators are classified as effective spill containment systems that meets the EN 858-1 Class I effluent targets at low flow rates.

Benefits

- GRP and rotomoulded models available
- Easier to service, with maintenance from ground level
- Inclusive of silt storage volume
- Fitted inlet and outlet connectors
- SmartServ Pro remote monitoring solution available (as optional extra)
- Vent points within necks
- Deep inverts available for 2.6 diameter units



170 – 69,444m²
Available for flow rates up to 285 litres per second.



AquaOil

Full retention MDPE and GRP separators/
bypass MDPE and GRP separators

*View terms online at <https://www.kingspan.com/gb/en-gb/products/wastewater-management/warranty-terms>

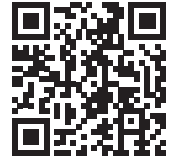
Treat

Store

Control

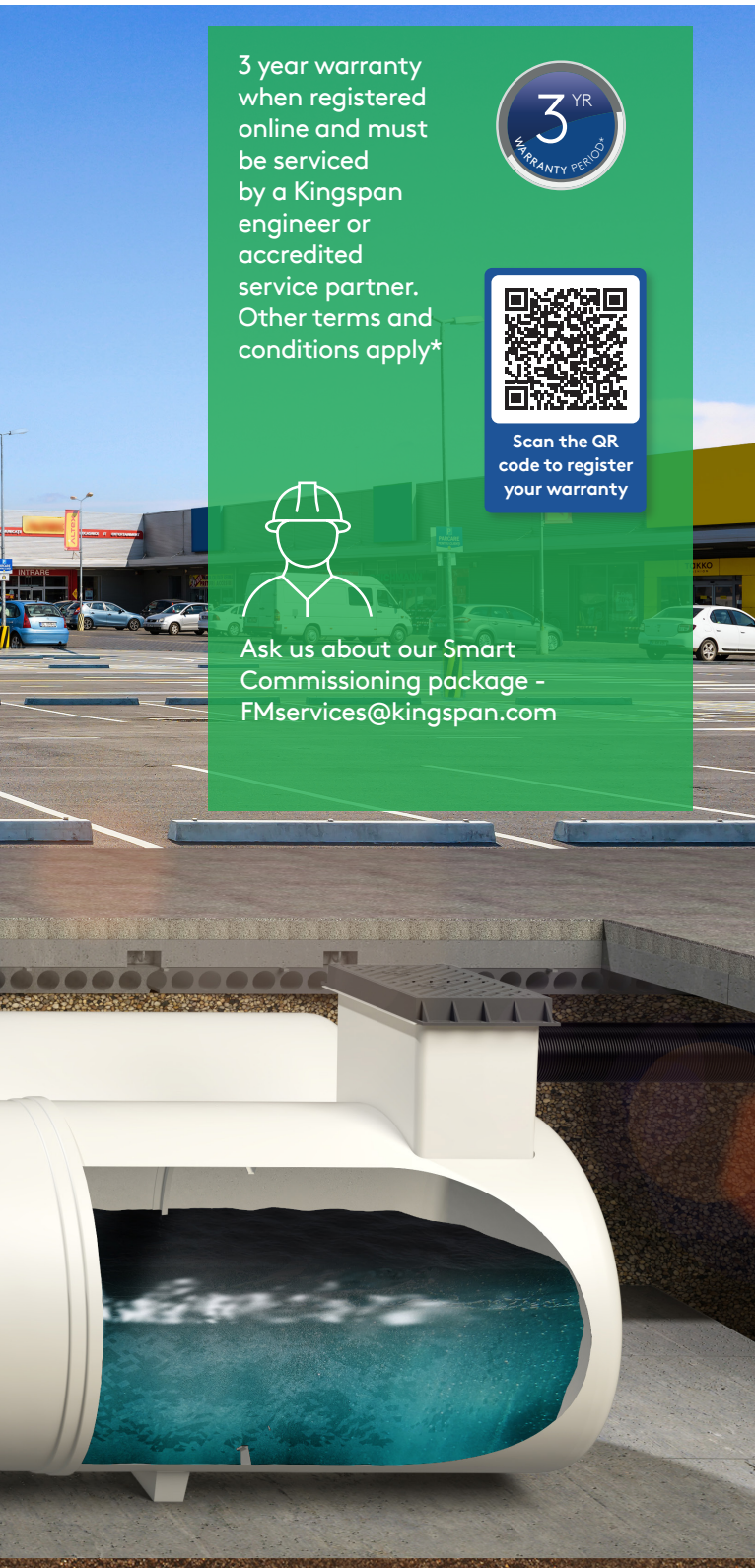
AquaHold

For more
information
including
technical
specifications,
scan here



The AquaHold range of Master and Storage Tanks prevent a build up of silt and other debris, whilst allowing access for regular maintenance.





3 year warranty when registered online and must be serviced by a Kingspan engineer or accredited service partner. Other terms and conditions apply*



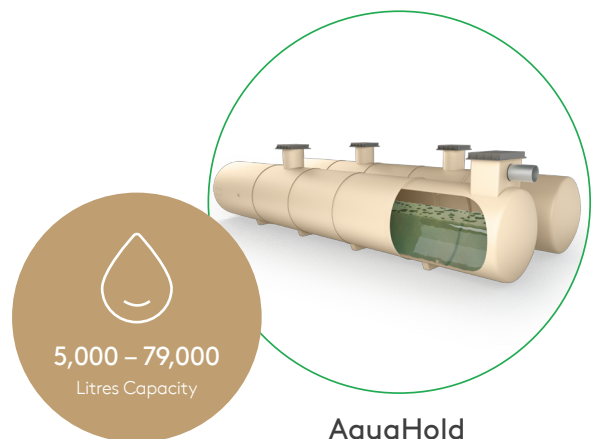
Scan the QR code to register your warranty



Ask us about our Smart Commissioning package - FMservices@kingspan.com

Klargester AquaHold tanks store increased runoff rates due to new developments and excess flows from storm events. Attenuation serves as a way to help mimic natural runoff rates that have been altered through developing sites.

The Klargester AquaHold range is available from 5,000–79,000 litres in a single tank installation, or larger modular solutions. Ask our team for details.



AquaHold
Master and Storage Tanks

Benefits

- Simple, robust solution
- Built from durable GRP material
- Suitable for small or large applications
- Easier to service
- Single or multiple tank installations available
- Full technical and servicing support available

*View terms online at <https://www.kingspan.com/gb/en-gb/products/wastewater-management/warranty-terms>

AquaFlow

For more information including technical specifications, scan here



The Klargest AquaFlow SF Horizontal Flow Control and FC Vertical Flow Control solutions are offered in 3 different chamber model sizes, with a standard range of 0.5 l/s – 80 l/s available. Greater capacities available on request.



0.5 – 80 litres per second*

*Flow rates

AquaFlow

SF Horizontal Flow Control and FC Vertical Flow Control solutions

Our AquaFlow devices control the runoff rate entering a receiving watercourse/ network. Limiting flow rates help avoid flooding and damage to natural habitats downstream and receiving watercourse. We offer overflow or surface operated bypass options, with full technical support available for your project.

Benefits

- Full range available in 1.2, 1.8 and 2.6 model sizes
- Robust GRP constructed chambers
- Flexibility with variable inlet connection sizes available
- Large chamber to facilitate ladder access in emergency situations
- Standalone product, compatible with crate systems
- Full technical and servicing support available

*View terms online at <https://www.kingspan.com/gb/en-gb/products/wastewater-management/warranty-terms>



3 year warranty when registered online and must be serviced by a Kingspan engineer or accredited service partner. Other terms and conditions apply*



Scan the QR code to register your warranty



Ask us about our Smart Commissioning package - FMservices@kingspan.com

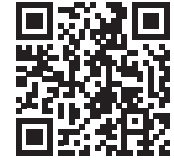
Treat

Store

Control

AquaPump

For more information including technical specifications, scan here



3 year warranty when registered online and must be serviced by a Kingspan engineer or accredited service partner. Other terms and conditions apply*



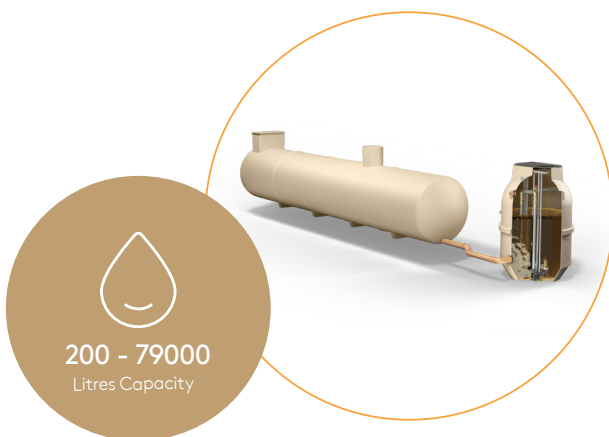
Scan the QR code to register your warranty



Ask us about our Smart Commissioning package - FMservices@kingspan.com

AquaPump PU vertical and PC horizontal range is for use when more than gravity is needed to control the release of water on an application.

With full technical support offered to ensure a bespoke pumping solution, our pump discharge ranges up to 70 litres per second.



200 - 79000
Litres Capacity

AquaPump
PU vertical and
PC horizontal range

Benefits

- Full range available in 0.6, 0.9, 1.0, 1.2, 1.8 & 2.6 model sizes
- Robust GRP constructed chambers
- Bespoke designs to suit difficult site layouts
- Chambers up to 4.5m deep, available as standard
- Discharge rates of 1 – 70 l/s with a variety of pump types
- Variable inlet connection sizes and orientations available
- Full technical and servicing support available

Contact Details

UK

Kingspan Water & Energy Ltd.
College Road North
Aston Clinton | Aylesbury
Buckinghamshire | HP22 5EW

T: 01296 633033
E: klargester@kingspan.com

We take every care to ensure that the information in this document is accurate at the point of publication. Specification may vary (within a small parameter) due to manufacturing process variations or environmental conditions. All images are for illustration purposes only and should not be taken as binding. The actual product may vary, and specification/ dimensions/ colour/ other attributes may differ.

To ensure you are viewing the most recent and accurate product information, please visit this link:
<https://www.kingspan.com/gb/en-gb/products/water-management/kingspan-klargester-aquacore>

©Kingspan and the Lion Device are Registered Trademarks of the Kingspan Group in the UK, Ireland and other countries. All rights reserved. Registered in Country No. NI017631. Registered Office:
180 Gilford Road, Portadown, Co. Armagh, BT635LF. VAT GB412 5124 03

