

ENGINEERING
TOMORROW

Danfoss

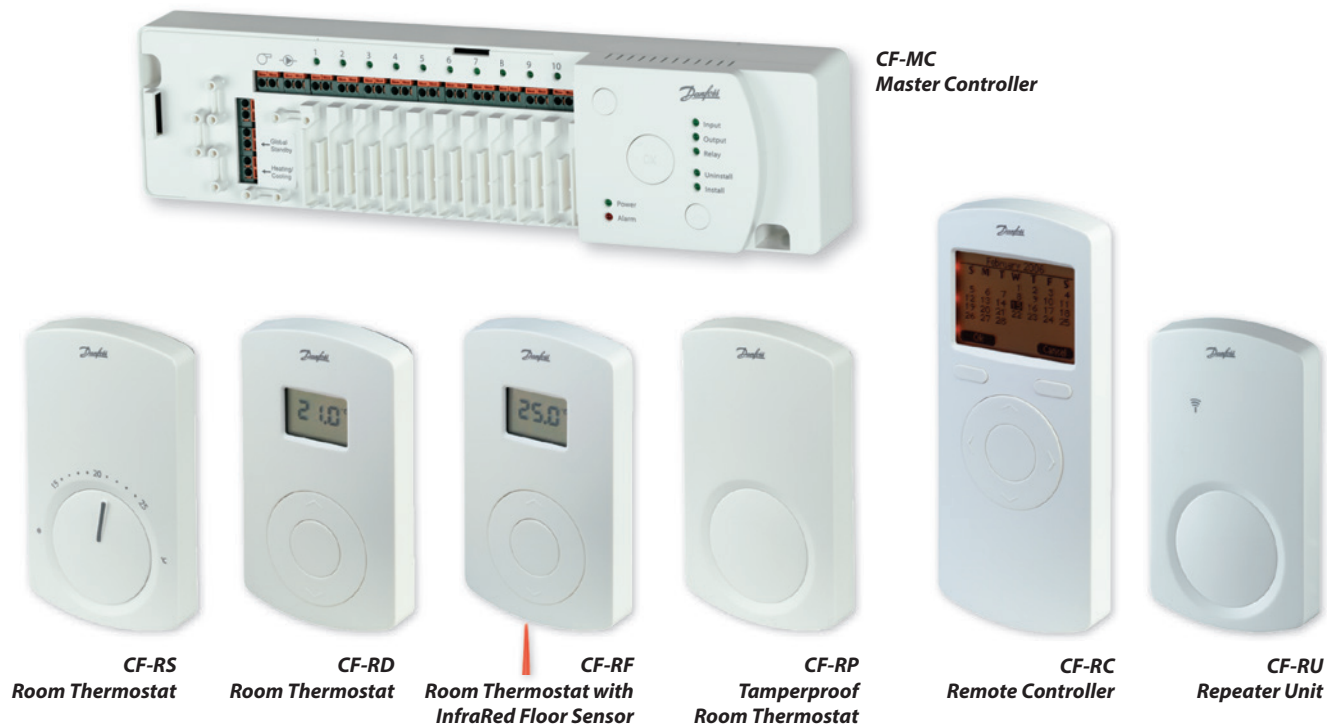
CF2 System

2-Way Wireless Floor Heating
Control System



CF2 System

2-Way Wireless Floor Heating Control System



The CF2 system is a new wireless floor heating control system which offers unrivalled ease of installation and an extremely user-friendly approach to controlling hydronic floor heating.

With a range of features for optimal comfort, the energy efficient CF2 system provides individual room or floor temperature control, with the option of wireless remote control.

In addition, the CF2 system has been developed to ensure installation, commissioning, and service is quick and easy for the heating installer. With no electrical installation of the thermostat necessary, the quick installation and easy commissioning saves installers time and reduces their costs.

The CF2 wireless floor heating control system is an obvious choice for controlling floor heating systems for installers and end users alike.

The CF2 range of products includes a choice of four thermostats, a master controller, a repeater unit and a remote controller.

Features

- *Energy saving and environmentally friendly floor heating*
- *Optimal and individual room temperature control*
- *Easy wireless installation*
- *User friendly*
- *Safe and reliable 2-way wireless communication technology*
- *Powered by 2 x AA alkaline 1.5V batteries*
- *Low battery indication via LED*
- *Possible temperature override by remote control*

*Comfort
begins at
floor level*



CF2 System

2-Way Wireless Floor Heating Control System

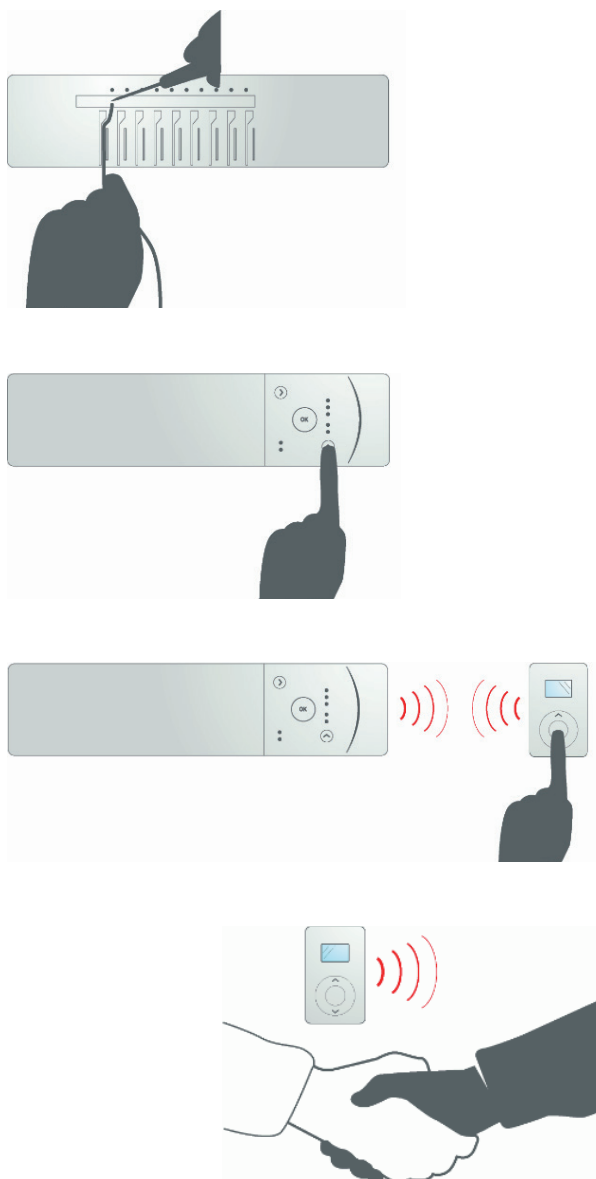
Advanced made easy

The wireless CF2 floor heating control system offers optimum reliability and extended functionality, combined with unrivalled ease of installation and use.

For installation, all you need to do is mount the Master Controller on the wall, connect to a 230V power outlet, and take a few minutes to connect the actuator cables. The Master Controller features 5 or 10 outputs which accommodate a wide range of actuator cables.

After the wireless assignment of the room thermostats to the Master Controller, the system is ready for use. The 2-way wireless communication ensures a high level of transmission reliability, and the possibility by link test to verify that all wireless connections to room thermostats are functioning.

You're now ready to hand over the Danfoss wireless CF2 floor heating control system. The automatic self diagnosis system will ensure easy maintenance.



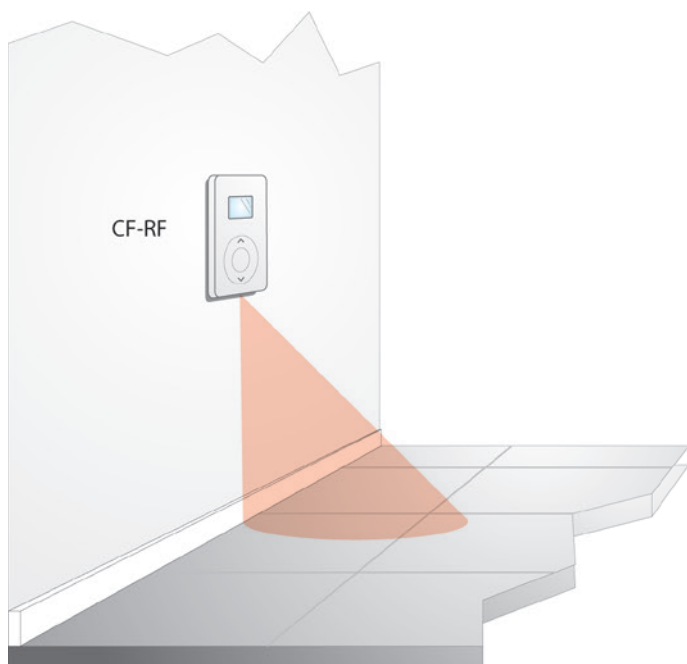


Adding comfort and safety to floor heating

As an additional safety feature the wireless connections may be tested prior to physical installation of the room thermostats on the wall. Simply activate the link test function and see the immediate status of the wireless connection directly on the room thermostats.

All room thermostats are equipped with an LED indicator for link testing and battery status. The CF2 range of room thermostats comprises of 4 versions for specific purposes:

- **Standard Room Thermostat (CF-RS)**
Aesthetic room thermostat with temperature setting dial.
- **Tamperproof Room Thermostat (CF-RP)**
Featuring hidden set point adjustment and link test activation, making it ideal for use in public places.
- **Display Room Thermostat (CF-RD)**
Shows actual or set room temperature, icons for low battery, link test and error codes.
- **Display Room Thermostat with InfraRed Floor Sensor (CF-RF)**
The CF-RF Room Thermostat has all the same features as the Display Room Thermostat but is further equipped with an Infra Red floor sensor which measures and limits the minimum and maximum floor surface temperature. Ideal for use in bathrooms, rooms with quarry tiles or wooden floors.



CF2 System

2-Way Wireless Floor Heating Control System

Repeating improves long distance communication

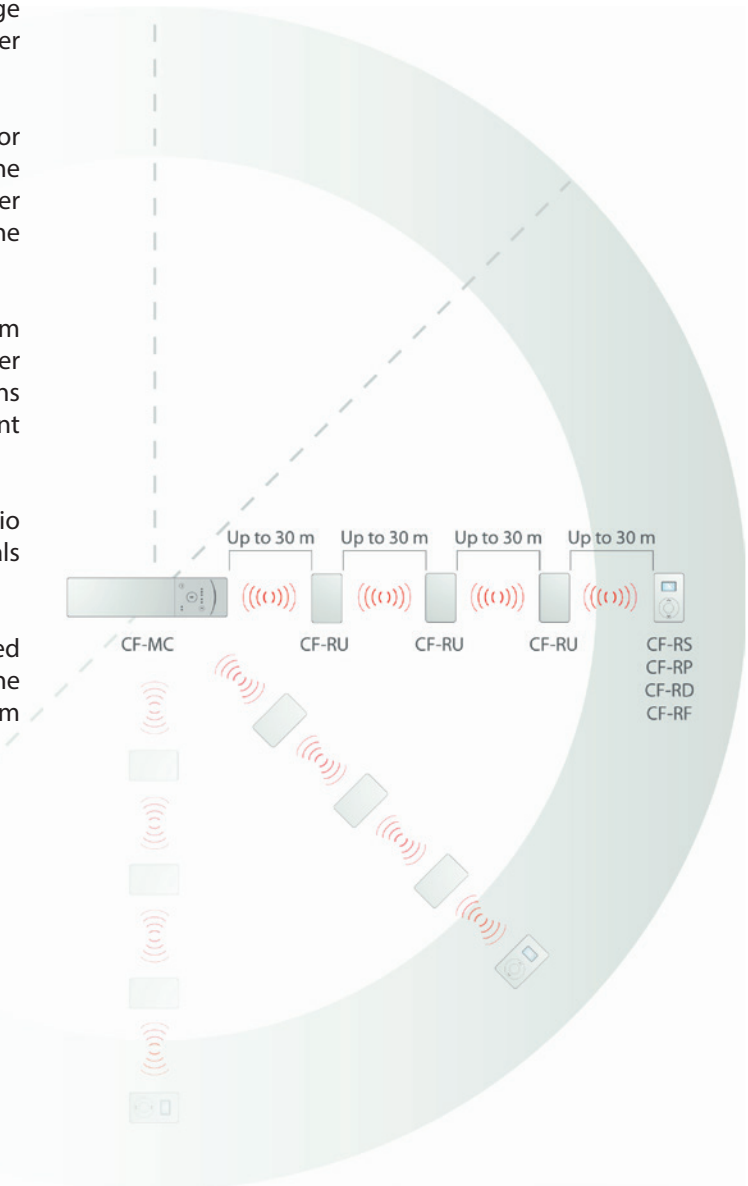
The Repeater Unit CF-RU extends the transmission range between Master Controller, room thermostats, and other connected components by 2-way wireless communication.

The Repeater Unit is particularly useful where distance or physical objects may impede any wireless connection. If the link test reveals a missing wireless connection to the Master Controller, simply install the Repeater Unit and reactivate the link test.

The Repeater Unit forwards the signals between room thermostats and Remote Controller (optional) to the Master Controller. This is particularly useful in larger installations where physical distance between components may prevent proper wireless connection.

The Repeater Unit may also be used in places where radio transmission barriers occur; for example where radio signals may be obstructed by heavy walls or metal objects.

The Master Controller supports up to 3 Repeater Units installed in a chain between the relevant room thermostat and the Master Controller. More parallel chains of Repeater Units from a Master Controller are possible.





Hands on control at a distance

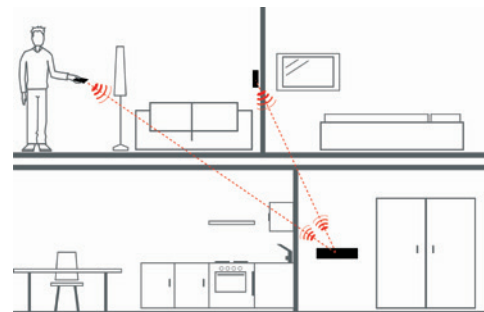


The entire wireless CF2 floor heating control system may, as an option, be operated by the easy-to-use CF-RC Remote Controller. When installing the system, the wireless Remote Controller facilitates the naming and setting of all rooms to be temperature controlled by the system.

The Remote Controller can be used for setting all outputs of the Master Controller individually for either floor heating or radiator systems.

The Remote Controller also provides access to system surveillance, zoning with temperature setback and period programme for holidays. Any system error will be logged by the Remote Controller and data will be stored in memory for later access.

All functions are available through a user-friendly menu on the Remote Controller's large display.



CF2 System

2-Way Wireless Floor Heating Control System

Common Features for all Room Thermostats

- Modern design
- Easy wireless installation
- Low battery indications via LED
- Powered by 2 x AA alkaline 1.5V batteries
- Possible temperature override by Remote Controller



CF-RS 088U021000

Standard Room Thermostat

- Temperature setting from 5 – 35°C by turning dial.



CF-RP 088U021100

Tamperproof Room Thermostat

- Tamperproof. No direct access to settings.
- This room thermostat is particularly suited for public and semi-commercial installations.



CF-RD 088U021200

Display Room Thermostat

- Displays either actual temperature or setting temperature.
- Temperature setting from 5 – 35°C by push buttons.
- Clock symbol indicating setback/timer function.
- Electronic limitation of min./max. room temperature via menu on display.
- Alarm icons and error codes in display, e.g. low battery indicator.

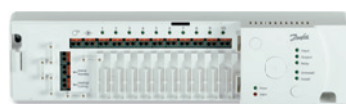


CF-RF 088U021300

Display Room Thermostat with Infra Red Sensor

This room thermostat includes all the features of the CF-RD plus:

- Measures the floor surface temperature by Infra Red floor sensor.
- Regulates the room temperature according to min. and max. floor temperature settings.
- Icon in display for floor sensor.



Master Controller CF-MC

10 outputs: 088U020001 5 outputs: 088U020501

- 2-way wireless transmission at 868 MHz.
- LED indicator for status on each output.
- Wireless installation of room thermostats and other system components.
- 24V short-circuit protected outputs.
- Versions with 5 and 10 outputs available.
- Regulation by ON/OFF or PWM (Pulse Width Modulation) principle.
- Two separate relays for both pump and boiler control.
- Actuator outputs accommodate several cable types for easy cable fixing and strain relief.
- Automatic self diagnosis program with error indication.
- Optional heating/cooling switch.



CF-RC 088U022001

Remote Controller

- Wireless connection to all CF2 components via Master Controller.
- Temperature setback programme for zone control of up to 6 zones and period programming for energy saving during holidays.
- Alarm log and easy failure identification.
- Naming and central settings for all room thermostats.
- Individual setting of each output on Master Controller for either floor heating or radiator system.



CF-RU 088U023001

Repeater Unit

- The Repeater Unit extends the wireless transmission range to the Master Controller from room thermostats.
- If a room thermostat is out of reach of the Master Controller, the Repeater Unit will repeat the wireless signal, thus re-establishing connection.

Danfoss Ltd

Ampthill Road, Bedford, MK42 9ER T: 01234 364621, E: ukheating@danfoss.com, W: www.heating.danfoss.co.uk