

UZIN SUPERTape 7900

Edge tape for PVC/CV coverings, homogeneous rubber coverings, textile coverings, ball yarn, ball fleece, Finett 7 and Flotex

MAIN APPLICATION FIELD:

- For bonding floor coverings at the edge or joints in conjunction with Sigaway Original.

SUITABLE ON / FOR:

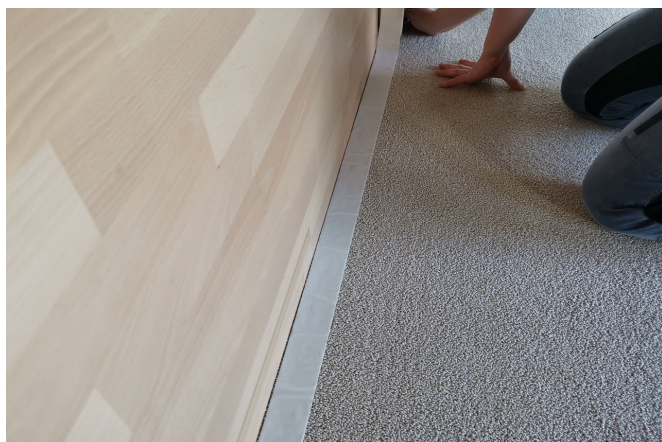
- Cement / gypsum fillers
- chipboard P3 / P5 / P7, plywood and MDF boards
- metal
- epoxy resin vapor barriers
- PVC / CV coverings
- PUR and epoxy resin coatings
- Artificial stone / terrazzo
- Ceramic coverings
- Textile coverings
- Hot water underfloor heating
- Spray extraction cleaning according to RAL 991 A2
- Heavy duty in commercial and industrial areas



PRODUCT BENEFITS/FEATURES:

SUPERTape 7900 is a low-emission, double-sided, dry adhesive on a rayon fabric carrier for bonding floor coverings for bonding floor coverings at the edge or butt joints in connection with Sigaway Original.

- Quick and easy installation
- The covering is immediately ready to accept traffic and loading
- Suitable for castor wheels



TECHNICAL DATA:

Packaging	carton
Pack size	1 roll (50 mm x 25 m)
Shelf life	min. 24 months
Colour	transparent
Open time	unlimited
Setting time / cure time	none
Ready for foot traffic	immediately after installation
Minimum application temperature	15 ° C at ground level
Loadable	immediately after installation
Joint sealing	immediately after installation

*At 20 °C and 65% relative humidity.



for new textile coverings

ON existing textile coverings

SUBSTRATE PREPARATION:

- ▶ SUPERTape 7900 is specially designed as a supplement to the installation of Sigaway Original.
- ▶ The existing floor covering to be covered, if any, must be fully bonded.
- ▶ Cut open and glue down any loose spots or holes, or glue in a piece of flooring of the same thickness. Possible level with compound to the level of the covering. Level of the covering.
- ▶ The substrate must be firm, level, permanently dry, free of cracks, clean and free of materials that would impair adhesion. impair adhesion.
- ▶ Check substrate according to applicable standards and information sheets and, in the event of defects report any deficiencies.
- ▶ Depending on substrate, surface covering and stresses suitable primers and levelling compounds from the UZIN Product Overview Thoroughly vacuum the surface, Prime and trowel.
- ▶ Always allow the primer and filler dry thoroughly.
- ▶ Thoroughly clean and degrease aluminum and non-rusting metals. and degrease, sand if necessary.
- ▶ Observe the product data sheets of the products and floor coverings.
- ▶ General: The relevant national standards for floor covering work (EN, DIN, VOB, OE, SIA or TKB Leaflet 12).

If suitability for chair castors is required for a new installation with SUPERTape 7900, both the surface to be installed and the already to be installed as well as the already installed, fully adhered must be suitable for chair castors.

For textile coverings as a substrate:

Textile coverings may only be covered with textile coverings. to be covered. The total thickness of the new textile covering must be greater than that of the lower textile covering.

APPLICATION:

Stick SUPERTape 7900 to the floor:

- ▶ Apply a strip of SUPERTape 7900 along the edge/wall areas onto the substrate.
- ▶ Apply two strips next to each other in the area of the seam.
- ▶ For bonding the surface, use Sigaway Original. be used.

IMPORTANT NOTES:

Limitations:

1. When re-lifting a covering that has been laid with Sigaway, it is possible that adhesive and fabric remnants remain stuck to the floor covering or subfloor underneath. For this reason, Sigaway is not suitable for use on existing coverings/subfloors that are intended to be re-used in their original condition (e. g., as non-slip underlays, floor coverings etc.).
2. Allow the floor covering and SUPERTape 7900 and Sigaway Original to acclimatise sufficiently in the room.

Attention:

Never use knee kickers and seam clamps!

Storage:

Store in the standing position in a dry and cool place, away from direct sunlight. Rewrap opened rolls in protective paper.

Non-guaranteed floor coverings:

- ▶ Oriental carpets, carpet bridges, runners
- ▶ Carpet runners with PVC-backs (e. g., dirt traps, Flotex)
- ▶ Carpet with adhesive-repellent coatings on the back (e. g., PUR)
- ▶ Woven, coconut, sisal, cork
- ▶ NEODON (NEODUR Textil / TOP-BAC)
- ▶ Needle punch
- ▶ Elastic floor coverings:
- ▶ PVC-coverings homogenous / heterogeneous
- ▶ CV-coverings
- ▶ PVC safety coverings, PVC design coverings
- ▶ Polyolefin coverings (PO coverings)
- ▶ Linoleum

Non-guaranteed sub-surfaces:

- ▶ Calcium sulphate coatings (filled) -> Sigan 1 with Planus
- ▶ Chipboard V 100 -> Sigan 1 with Planus
- ▶ Elastic floor coverings (PVC, CV, linoleum) -> Sigan 2
- ▶ PVC-coated cork coverings -> Sigan 2
- ▶ PU and epoxy resin coverings -> Sigan 2
- ▶ Parquet / laminate -> Sigan 3
- ▶ Artificial stone / Terrazzo -> Sigan 3
- ▶ Sealed cork coverings -> Sigan 3
- ▶ Marble and natural stone floors (discolouration)
- ▶ Insulating coverings
- ▶ Surfaces containing bitumen
- ▶ Profiled stone flags (embossing / grouting pattern)

UZIN grants a 5-year warranty for all properties claimed in the processing instructions.

- ▶ Follow the generally acknowledged rules of the trade and of technology for the installation of floor covering of the respective applicable standards (EN, DIN, VOB, OE, SIA). In all cases, some adhesion tests must be carried out on-site before carrying out the installation.

The warranty becomes void if:

- ▶ SUPERTape 7900 is used outdoors
- ▶ unusual influences, and in particular those of a chemical or mechanical nature, affect the product
- ▶ substrate unevenness occurs (insufficient stability of the substrate)
- ▶ in case of any utilisation or processing that deviates from the laying instructions (never use SUPERTape 7900 on stairs or walls)
- ▶ discolouration arises from chemical reactions between the floor covering and the substrate
- ▶ if joints are formed or warping occurs due to dimensional changes of the floor covering
- ▶ the floor covering was laid stretched and under tension
- ▶ moisture affects the SUPERTape 7900
- ▶ laying is carried out at temperatures below 15 °C (at ground level)
- ▶ SUPERTape 7900 is used in areas with increased air humidity and/or thermal loadings (e. g. conservatories)

SEALS OF QUALITY & ECOLABELS:

- EMICODE EC 1 PLUS / Very low emission

COMPOSITION:

Acrylic copolymers, wetting and defoaming agents, plastic film, paper.

PROTECTION OF THE WORKPLACE AND THE ENVIRONMENT:

The product does not require any special labour protection measures. For reasons of working hygiene, we recommend avoiding eating, drinking and smoking during processing of this product. Store out of the reach of children. For more information refer to www.uzin.com or contact +49 731 4097-0.

DISPOSAL:

Empty shells and the cardboard packaging can be recycled. Material remnants can be disposed of as household waste.