



PAROC[®]
Panel System



Dri-Design Architectural Façades

Dri-Design Flat
Dri-Design Tapered
Dri-Design Shadow
Dri-Design Perforated

Stretcher Bond Pattern Vertically Laid



**Chinguacousy
Community Center**

Product
Dri-Design
Flat

Material
VM Zinc

Architect
MJMA
Architects

Dri-Design

One cassette, multiple design options.

Stackbond or Stretcher Bond patterns, horizontal or vertical orientation - Dri-Design from BENCHMARK is the revolutionary cassette that allows designers to achieve patterns that are easily interchangeable. Its beautifully simple one-piece engineering eliminates many of the complexities of other systems.



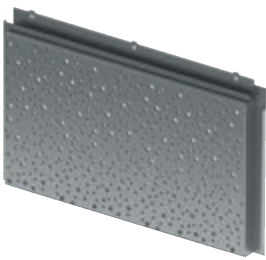
Dri-Design Flat



Dri-Design Shadow



Dri-Design Tapered



Dri-Design Perforated

Stretcher Bond Pattern Horizontally Laid



Henry Ford
Community College

Product
Dri-Design
Flat

Material
VM Zinc

Stackbond Pattern



SLCC

Product
Dri-Design
Flat

Material
VM Zinc

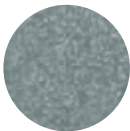
Metal Types



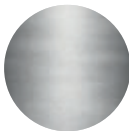
Aluminium



Copper



Zinc



Stainless Steel



Corten

Dri-Design



**Parkview West
Condos**

Product
Dri-Design
Flat

Material
Anodised
Copper

Architect
Solomon Cordwell
Buenz

Dri-Design Flat

Dri-Design Flat is our standard cassette; it can be easily interchanged with the other Dri-Design cassettes, Standard and Tapered.



Cleveland School of Arts

Product
Dri-Design
Flat

Architect
Moody
Nolan

Dri-Design



Millwood Library

Product
Dri-Design
Tapered

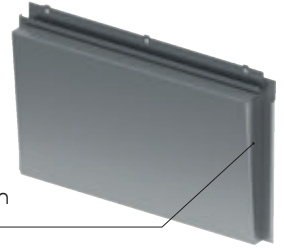
Material
Anodised
Aluminium

Architect
HCMA Architecture + Design,
Vancouver and Dub Architects Ltd, Edmonton

Dri-Design Tapered

Dri-Design Tapered cassettes can be angled in any direction with varying depths and degree of angle. This freedom to design each specific cassette gives you an unlimited capacity to create a dynamic, one-of-a-kind surface on nearly any façade, without the need to modify the substrate or weather barrier.

Increasing depth to one side allows a tapered variation of a standard Flat cassette, fixing system remains the same.

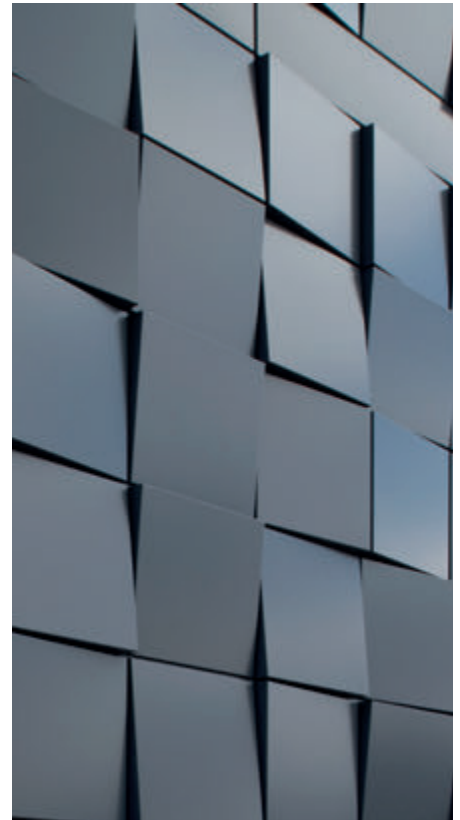


**Tishomingo
Health Center**

Product
Dri-Design
Tapered

Material
Painted
Aluminium

Architect
James R.
Childers
Architect



Spring St

Product
Dri-Design
Tapered

Material
Painted
Aluminium

Architect
Ware
Malcomb



Dri-Design



**Regent Park
Aquatic Park**

Product
Dri-Design
Shadow

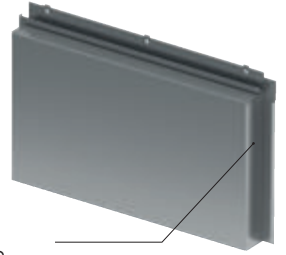
Material
VM Zinc

Architect
MacLennan Jaunkalns
Miller Architects

Dri-Design Shadow

The projects featured on these pages include Dri-Design Shadow cassettes mixed with the standard Flat cassettes. Shadow allows designers to increase the depth of any one cassette by up to 67mm, these can be added sporadically or in regular intervals, it has no adverse effect on installation. So, by adding one or two Dri-Design Shadow cassettes depth and texture is added to a flat wall.

Increasing depth allows a "Shadow" variation of a standard Flat cassette, which when used with the Flat cassette gives depth and texture - fixing system remains the same.



**General Mitchell
International Airport**

Product
Dri-Design
Shadow

Material
Painted
Aluminium

Architect
Engberg Anderson Architects,
Milwaukee

Dri-Design



Minnesota Sports
Facility

Product
Dri-Design
Perforated

Material
Painted
Aluminium

Dri-Design Perforated

Dri-Design with Perforated Imaging uses advanced computer based manufacturing to create complex images using perforations. By varying the size, location and density of the perforations, areas of light, dark and shades in between are created to form an image. These perforations also allow the cassette to provide needed airflow and/or shade to a structure. Since the images can be created from any digital picture, you are only limited by your imagination.



**St. Joe Franciscan Medical
Center Washington**

Product
Dri-Design
Perforated

Material
Painted
Aluminium

Architect
Perkins
+ Will

Colouring Your Design

Modern powder coating facility

We are the only fabricator to be Qualicoat approved which shows our consistently high standard of application in both class 1 and class 2 polyester powder coating.

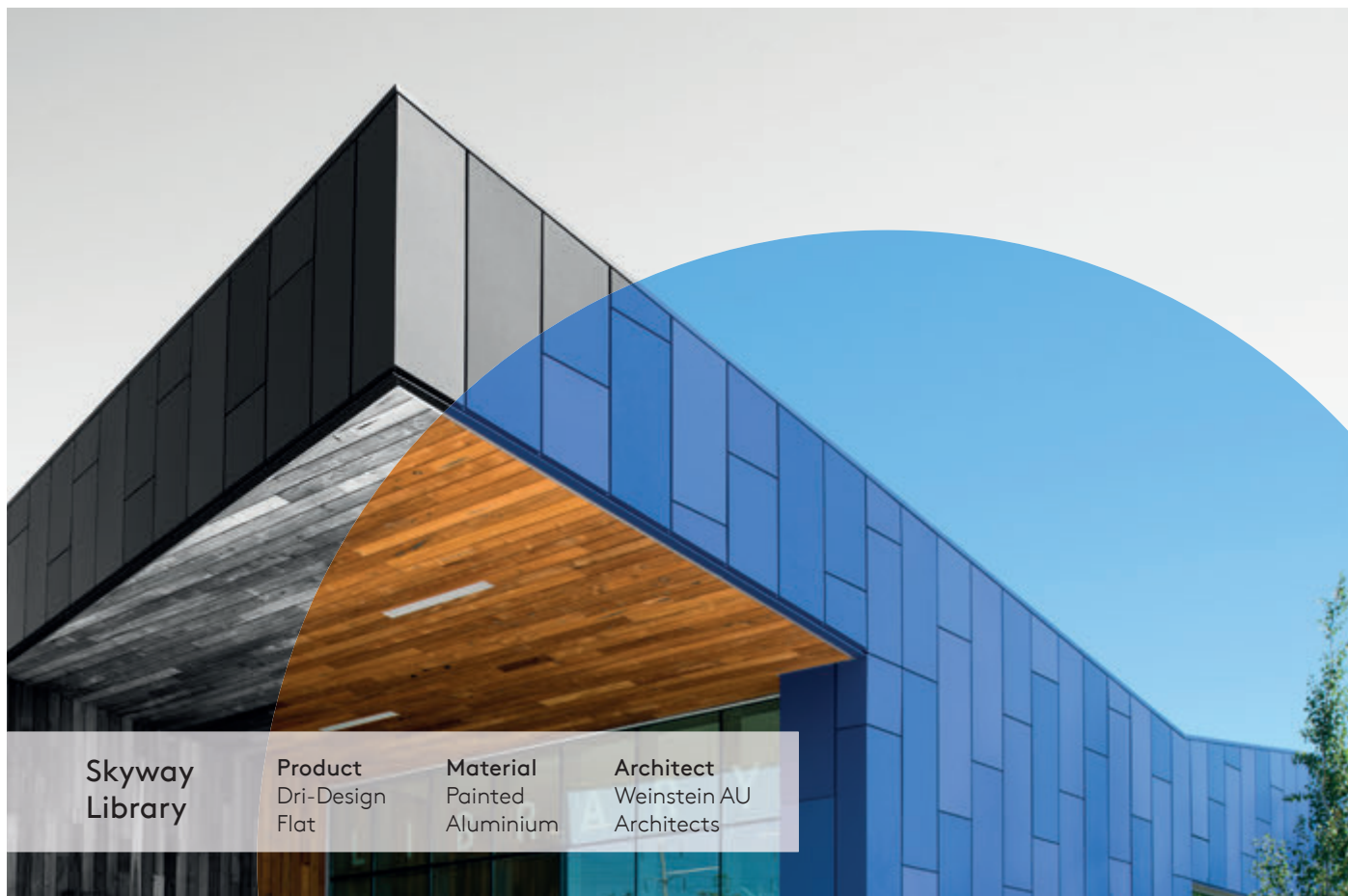
Our modern powder coating facility is located within feet of the laser cutting and panel bending facilities, cassettes go directly from one station to the next for a seamless process.



Specialist Fabrications

From aperture units to wall panel louvres, our specialist fabrications are custom designed to suit individual project needs. Manufactured and coated within the same facility ensures your building's accessories are fully integrated into your design.





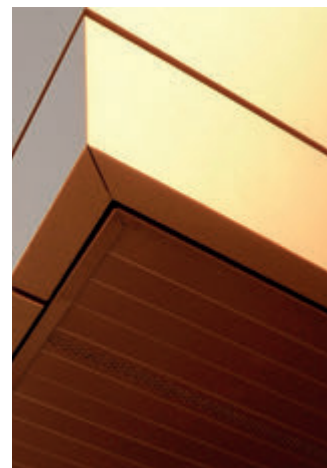
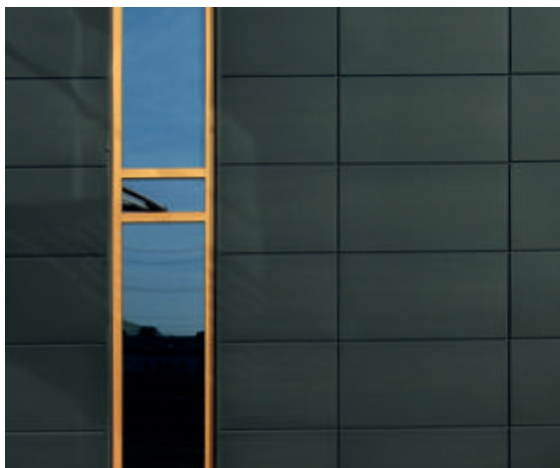
Colour, texture, tone are integral elements in design

Dri-Design is available in 5 natural metals and can also be powder coated in our vast palette, from metallic, standard, colour and textured to any RAL or BS colour. Coatings can replicate more expensive metal, wood and many other materials. Contact us for colour swatches and options.

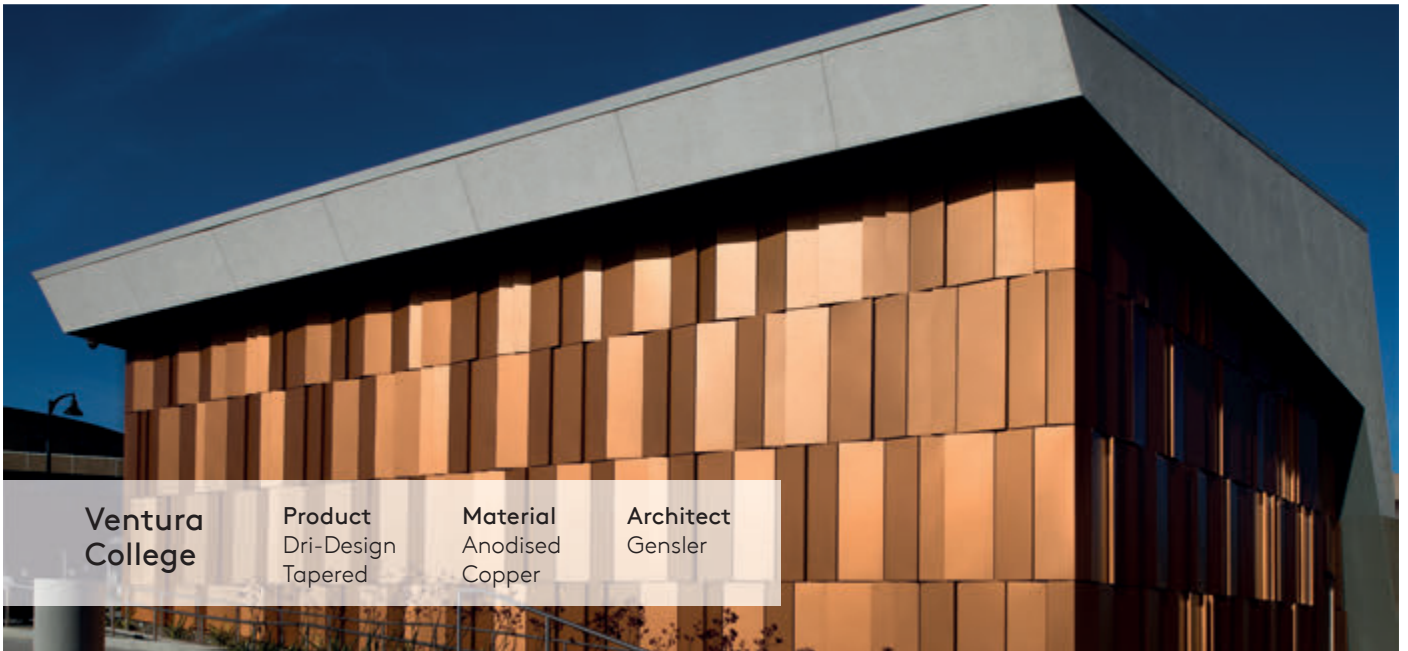


Coatings can replicate more expensive metal, wood and many other materials.

Contact us for colour swatches and options.



Dri-Design



Sustainable Solution

Dri-Design cassettes have a high recycled content, are 100% recyclable, have fewer components and are manufactured and coated within the same facility which cuts down on transportation. Cassettes can also be easily repaired and recoated on site to maximise longevity. An unlimited capacity to create a dynamic, one-of-a-kind surface on nearly any façade, without the need to modify the substrate or weather barrier.



Ohio Residence

Product
Dri-Design
Flat

Material
VM Zinc

Architect
Jose Garcia
Design

PAROC[®] Panel System

Paroc Panel System
Sysilahden teollisuusalue 2,
FI-21600 Parainen, Finland

Paroc Panel System
Bruksgatan 2,
541 31 SKÖVDE, Sweden

Paroc Panel System
Nils Hansens vei 2,
NO-0667 OSLO, Norway

Paroc Panel System
Lyngsø Alle 3,
2970 Hørsholm, Denmark

