



Section 2

Gully Grates

Section 2 Contents

F900

Briflo

E600

Briflo

D400

Aqua-Max
AquaVantage
Rexus
Ax-S 400
Watershed
Watershed Orbis
Torrent
Waterway 1200
Waterway 2000
Waterway 2400

C250

Watershed
Pedestrian
Waterflow

B125

Aquaflo



Briflo

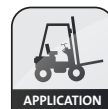
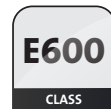
Product code	Nominal clear opening A x B (mm)	Over base C x D (mm)	Depth E (mm)	Waterway area (cm ²)	HA102 reference	Grating mass (kg)	Total mass (kg)	Pallet quantity	Internal ref
234216	465 x 465	620 x 573	140	872	R	50*	97	5	BZ490 1

Recommended for use in areas that are subjected to heavy wheel loads such as aircraft pavements and container ports.

Features

- Double triangular.
- Non-rock design.

* Grating mass per pair.



Briflo

Product code	Nominal clear opening A x B (mm)	Over base C x D (mm)	Depth E (mm)	Waterway area (cm ²)	HA102 reference	Grating mass (kg)	Total mass (kg)	Pallet quantity	Internal ref
185973	465 x 465	620 x 573	140	880	R	47.2*	94.5	5	BZ460 1

Recommended for use in areas that are subjected to heavy wheel loads such as aircraft pavements and container ports.

Features

- Double triangular.
- Non-rock design.

* Grating mass per pair.



High performance gratings

Growth in traffic speed and intensity coupled with ever changing climatic conditions is placing greater emphasis on the importance of installing high performance problem free, durable drainage solutions. This has led to Saint-Gobain PAM UK developing a range of gratings that include standard features that when combined aid in the reduction of future maintenance or replacement costs.

Designed and developed with the needs of the client and operators in mind, the AquaVantage & Aqua-Max range of high performance gratings are being selected and specified for some of the most testing applications in the strategic and local road networks. Each combine high absorption grating design with ease of use, enhanced durability and security features to aid in the reduction of whole life costs.

Increased safety

- Captive hinge with integral hinge pins.

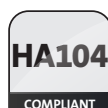


Increased security

- Automatic spring arm locking device.

Improved efficiency

- Highly efficient grating design.



Aqua-Max

Product code	Product code with Install Plus	Opening orientation	Nominal clear opening A x B (mm)	Over base C x D (mm)	Depth E (mm)	Waterway area (cm ²)	HA102 reference	Total mass (kg)	Pallet quantity	Internal ref
205864	255455	Kerb	450 x 450	660 x 550	100	1240	R	48	15	BY34 1
205865	255456	Kerb	450 x 450	660 x 550	150	1240	R	53	15	BY35 1
252124	255457	Left hand	450 x 450	625 x 550	100	1220	R	42	12	BY36 1
252104	255458	Left hand	450 x 450	625 x 550	100	1220	R	42	12	BY36 1/CZ*
263876	263936	Right hand	450 x 450	625 x 550	150	1220	R	50.6	12	BY39 1

Recommended for use in city roads carrying continuous heavy traffic where efficient water removal is required – with the addition of a captive hinge for ease of maintenance.



Features

- Captive hinged grating.
- Non-rock design.
- Single-piece grating.
- LTS installation and durability features.
- Automatic grating security locking.
- Wedge seating.

Options

- Security can be increased through the provision of retro-fit locking kits.

All sizes are available with the Install Plus frame levelling system, please refer to the installation section for further details.

Retro-fit security locking kits

Product code	Description
Standard Turnbuckle Locking Kits	
187097	Locking kit with key for 100mm deep frame
187096	Locking kit without key for 100mm deep frame
215624	Locking kit with key for 150mm deep frame
215626	Locking kit without key for 150mm deep frame
190664	Opening/locking key 175mm long
205435	Opening/locking key 600mm long
SCS High Security Locking Kits	
215610	Locking kit with key for 100mm deep frame
215622	Locking kit without key for 100mm deep frame
215627	Locking kit with key for 150mm deep frame
215628	Locking kit without key for 150mm deep frame
C18	SCS Locking key



AquaVantage

Product code	Nominal clear opening A x B** (mm)	Over Base C x D** (mm)	Depth E (mm)	Waterway area (cm ²)	HA102 reference	Total mass (kg)	Pallet quantity	Internal ref
242564*	600 x 600	738 x 742	150	2200	P	83	5	HV15 1
241255	900 x 900	1050 x 1020	180	5250	P	182	5	HV66 1
256280*	675 x 1200	830 x 1355	150	4880	P	187	5	HV85 1
251829	1200 x 675	1356 x 809	200	5110	P	178	3	HV86 1

Recommended for use in carriageway surface water drainage channels with a 1:5 V shaped profile.

Features

- Captive hinged grating.
- Non-rock design.
- Single-piece grating.
- Automatic grating security locking.
- Wedge seating.

Options

- Additional security locking option.

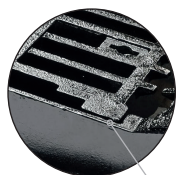
Use loop handle lifting keys product code 190667 460mm long or 190668 610mm long.

* Denotes removable grating.

** Denotes dimension when measured along direction of channel.

Increased safety

- Grating lever points.



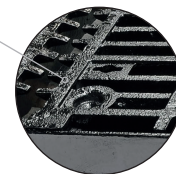
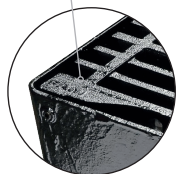
Increased security

- Automatic spring arm locking device.



Improved durability

- Wedge seating arrangement.



Increased security

- Retro-fit locking device option.



Rexus

Product code	Opening orientation	Nominal clear opening A x B (mm)	Over base C x D (mm)	Depth E (mm)	Waterway area (cm ²)	HA102 reference	Total mass (kg)	Pallet quantity	Internal ref
211607	Right hand opening	600 x 600	800 x 714	100	1870	Q	85	14	H466R
211608	Left hand opening	600 x 600	800 x 714	100	1870	Q	85	14	H466L
211145	Four flanged	600 x 600	800 x 800	100	1870	N/A	88	10	H465

Recommended for use in city roads carrying continuous heavy traffic where efficient water removal is required – with the addition of a captive hinge for ease of maintenance.

Features

- Non-rock design.
- Single-piece grating.
- LTS installation and durability features.
- Automatic grating security locking.
- Multi-directional water deflectors.
- Wedge seating.

Options

- Additional security locking option.



Ax-S 400

Product code	Description	Nominal clear opening A x B (mm)	Over base C x D (mm)	Depth E (mm)	Waterway area (cm ²)	Total mass (kg)	Internal ref
EDAX60DKX12	Hinged opening	600 dia	850 x 850	100	1190	58	RH62 M4KA

Recommended for use in carriageways carrying continuous heavy traffic where a circular hinged grating is required on applications such as catch pits.

Features

- Removable hinged grating.
- Non-rock design.
- Single piece grating.
- Multi-directional water deflectors.
- Large frame load bearing area.
- Integral automatic spring bar security locking.



Watershed

Product code	Opening orientation	Nominal clear opening A x B (mm)	Over base C x D (mm)	Depth E (mm)	Waterway area (cm ²)	HA102 reference	Total mass (kg)	Pallet quantity	Internal ref
EDWS43EK	Kerb hinging	370 x 430	585 x 525	100	980	R	36	20	HR865 1
187136	Kerb hinging	370 x 430	625 x 575	100	980	R	48	20	HR863 1
220325	Left hand opening	370 x 430	575 x 525	100	1090	R	35	20	HR876 1
220324	Right hand opening	370 x 430	575 x 525	100	1090	R	35	20	HQ876 1
249438	Left hand opening	370 x 310	525 x 400	100	810	S	28	20	HR811
241109	Left hand opening	510 x 360	664 x 454	100	1225	R	40.4	20	HR815
239857	Left hand opening	600 x 450	750 x 540	100	1850	Q	53	10	HR840
239858	Right hand opening	600 x 450	750 x 540	100	1850	Q	53	10	HQ840
244030	Left hand opening	600 x 450	750 x 540	100	1850	Q	53	10	HR840 L 1W
186860*	Left hand opening	370 x 430	575 x 525	100	1020	R	34.4	20	H875L
186861	Right hand opening	370 x 430	575 x 525	100	1020	R	34.4	20	H875R
256133	Left hand opening	400 x 445	595 x 488	100	1186	R	42.9	20	HR850 1
266317	Left hand opening	450 x 450	600 x 540	100	1221	Q	48	20	HR832 1
266318	Right hand opening	450 x 450	600 x 540	100	1221	Q	48	20	HR834 1
257782	Kerb hinging	450 x 450	600 x 540	100	1221	Q	48	20	HR830 1
257812#	Kerb hinging	450 x 450	630 x 562	150	1221	Q	62	20	HR831 1
266319#	Left hand opening	450 x 450	630 x 562	150	1221	Q	62	20	HR833 1
266320#	Right hand opening	450 x 450	630 x 562	150	1221	Q	62	20	HR835 1

Recommended for use in carriageways carrying continuous heavy traffic where frequent access is required.

Features

- Captive hinged grating.
- Non-rock design.
- Single-piece grating.

Options

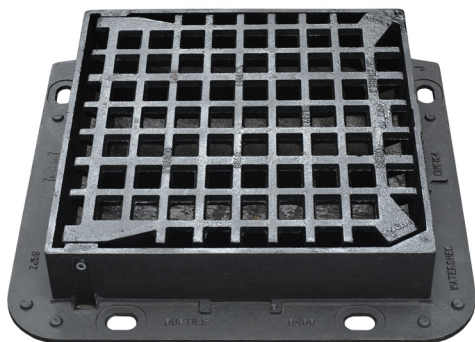
- Security locking option.

Most sizes are available with the Install Plus frame levelling system, please refer to the installation section for further details.

* Unit is locked using a spring clip feature.

Units have a 75mm wide flange.

install plus



Watershed Orbis

Product code	Opening orientation	Nominal clear opening A x B (mm)	Over base C x D (mm)	Depth E (mm)	Waterway area (cm ²)	HA102 reference	Total mass (kg)	Pallet quantity	Internal ref.
256854	Kerb hinging	454 x 454	600 x 540	100	975	R	48	20	HR820 1
256855	Left hand opening	454 x 454	600 x 540	100	975	R	48	20	HR822 1
256856	Right hand opening	454 x 454	600 x 540	100	975	R	48	20	HR824 1
261284	Kerb hinging	454 x 454	630 x 562	150	975	R	62	20	HR821 1
261280	Left hand opening	454 x 454	630 x 562	150	975	R	62	20	HR823 1
261281	Right hand opening	454 x 454	630 x 562	150	975	R	62	20	HR825 1

Recommended for use in carriageways and pedestrian areas where a cycle friendly grating design is required.

Features

- Captive hinged grating.
- Non-rock design.
- Single-piece grating.
- Pedestrian/cyclist safe mesh grating.

All sizes are available with the Install Plus frame levelling system, please refer to the installation section for further details.

Note: The Watershed Orbis range replaces the Victoria & Watershed Meshed ranges. Please refer to the C250 section for other pedestrian options.



Please visit our website:

www.saint-gobain-pam.co.uk
to download electronic versions
or to request hard copies of any
of our brochures.



Torrent

Product code	Nominal clear opening A x B (mm)	Over base C x D (mm)	Depth E (mm)	Waterway area (cm ²)	Grating mass (kg)	Total mass (kg)	Pallet quantity	Internal ref
185981	1210 x 685	1385 x 850	100	4500	70*	203	5	BZT14 1
185982	1825 x 685	1985 x 850	100	6750	70*	300	5	BZT24 1
262966	1210 x 685	1385 x 850	150	4500	70*	234	3	BZT16 1
263743	1825 x 685	1985 x 850	150	6750	70*	343	3	BZT26 1

Recommended for use in carriageways carrying continuous heavy traffic. The large waterway area makes it suitable for use in areas subjected to high surface water runoff such as catchpits and motorway verges.



Features

- Double triangular grating.
- Non-rock design.
- Large waterway area.

All sizes are available with the Install Plus frame levelling system, please refer to the installation section for further details.

Use loop handle lifting keys product code 190667 460mm long or 190668 610mm long.

* Grating mass per pair.



Waterway 1200

Product code	Nominal clear opening A x B (mm)	Over base C x D (mm)	Depth E (mm)	Waterway area (cm ²)	HA102	Grating mass (kg)	Total mass (kg)	Pallet quantity	Internal ref
185972	435 x 435	587 x 525	100	1200	Q	25*	43	20	BZ32 1

Recommended for use in carriageways carrying continuous heavy traffic.



Features

- Double triangular grating.
- Non-rock design.
- LTS installation and durability features.

Available with the Install Plus frame levelling system, please refer to the installation section for further details.

*Grating mass per pair.



Waterway 2000

Product code	Nominal clear opening A x B (mm)	Over base C x D (mm)	Depth E (mm)	Waterway area (cm ²)	HA102 reference	Grating mass (kg)	Total mass (kg)	Pallet quantity	Internal ref
185976	600 x 600	802 x 802	100	2000	-	57	86	10	BZ48 1
185978 ■	600 x 600	802 x 720	100	2000	P	57	84	10	BZ50 1 ■
240126	600 x 600	705 x 820	150	2000	P	57	96	10	BZ51
185979	600 dia	802 x 802	100	2000	-	57	90	10	BZ52
185980	600 x 600	820 x 780	150	2000	-	57	96	10	BZ54 1

Recommended for use in carriageways carrying continuous heavy traffic. The large waterway area makes it suitable for use in areas subjected to high surface water runoff such as catchpits and motorway verges.



Features

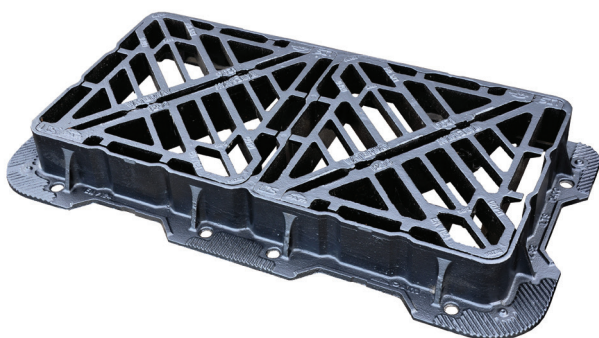
- Double triangular grating.
- Non-rock design.
- Large waterway area.
- LTS installation and durability features.

Options

- Three or four flanged frame option.

Most sizes available with the Install Plus frame levelling system, please refer to the installation section for further details.

- Three flanged frame.



Waterway 2400

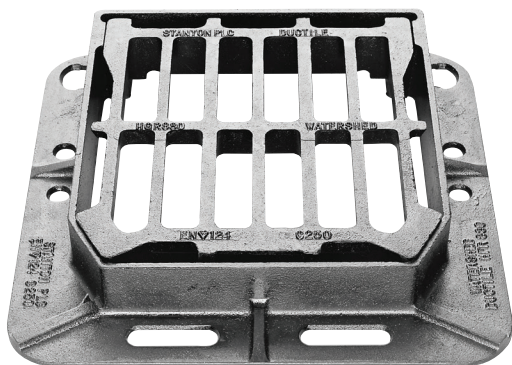
Product code	Nominal clear opening A x B (mm)	Over base C x D (mm)	Depth E (mm)	Waterway area (cm ²)	HA102 reference	Total mass (kg)	Grating mass (kg)	Pallet quantity	Internal ref
BZ82 1	425 x 415 (x2)	1036 x 525	101	2400	P	84	25*	5	211234

Recommended for use in areas subjected to high water run-off including catchpits, motorway verges, cuttings and between verges and valleys.

Features

- Large waterway area.
- Non-rock design.
- LTS durability feature.
- Multiple double triangular design.

* Grating mass per pair.



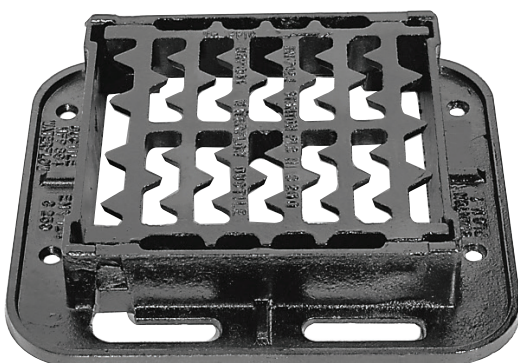
Watershed

Product code	Opening orientation	Nominal clear opening sizes A x B (mm)	Over base C x D (mm)	Depth E (mm)	Waterway area (cm ²)	HA102 reference	Total mass (kg)	Pallet quantity	Internal ref
187140	Kerb hinging	380 x 400	525 x 487	76	940	S	28	20	HR880 1

Recommended for use in local access roads carrying continuous traffic, where hinged access is required.

Features

- Captive hinged grating.
- Non-rock design.
- Single-piece grating.



Pedestrian

Product code	SAP code with spring locking	Opening orientation	Nominal clear opening A x B (mm)	Over base C x D (mm)	Depth E (mm)	Waterway area (cm ²)	HA102 reference	Total mass (kg)	Pallet quantity	Internal ref with spring locking	Internal ref
187126	186862	Left hand opening	324 x 312	476 x 401	76	655	S	23	30	H893L 1	HP893 1
187161	186854	Left hand opening	370 x 430	525 x 525	100	830	S	38	20	H813L 1	HY813 1

Recommended for use in areas of slow moving traffic where a cycle and pedestrian safe grating design is required.

Features

- Captive hinged grating.
- Single-piece grating.
- Pedestrian/cyclist safe grating design.

Options

- Security locking option.

For D400 pedestrian options please refer to the Watershed Orbis section.



FEATURE



FEATURE



FEATURE



CLASS



APPLICATION



GROUP



KITEMARK

Waterflow

Product code	SAP code with spring locking	Opening orientation	Nominal clear opening A x B (mm)	Over base C x D (mm)	Depth E (mm)	Waterway area (cm ²)	HA102 reference	Total mass (kg)	Pallet qty	Code with spring locking	Internal ref
187127	186863	Left hand opening	324 x 312	477 x 401	76	787	T	22	30	H894L	HP894 1
187130	186864	Left hand opening	325 x 437	476 x 526.5	76	933	S	28	20	H895L	HP895 1
187132	186865	Left hand opening	400 x 432	553 x 533	76	1128	R	33	20	H897L	HP897 1
186856	-	Left hand opening	370 x 310	520 x 400	75	786	T	25	30	-	H820S
186858*	-	Left hand opening*	370 x 310	520 x 400	75	786	T	25	30	-	H822S

For use in city and estate roads where regular access for cleaning is required.

Features

- Captive hinged grating.
- Single-piece grating.

Options

- Security locking option.

*Concave grating profile.



FEATURE



FEATURE



FEATURE



CLASS



APPLICATION



GROUP



KITEMARK

Aquaflo

Product code	Nominal clear opening sizes A x B (mm)	Over base C x D (mm)	Depth E (mm)	Waterway area (cm ²)	Total mass (kg)	Pallet quantity	Internal ref
176019	230 x 225	300 x 300	60	300	9	45	C6062R
186039	300 x 300	375 x 375	60	575	13	40	C6064R

Recommended for use in pedestrian areas where a concave profiled grating is required within surface water drainage channel systems.

Features

- Captive hinged grating.
- Single-piece grating.
- Dished grating profile.