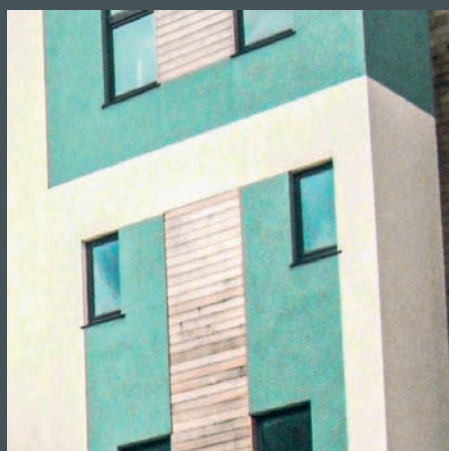
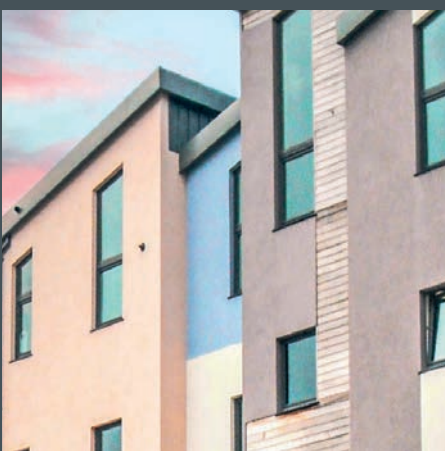
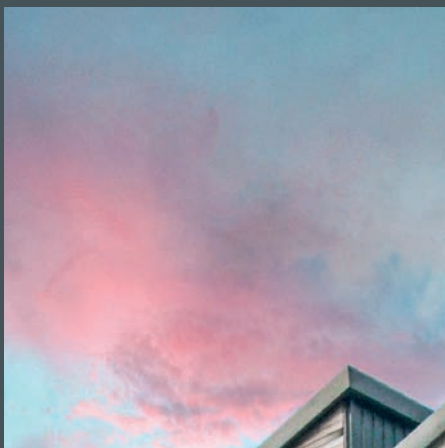
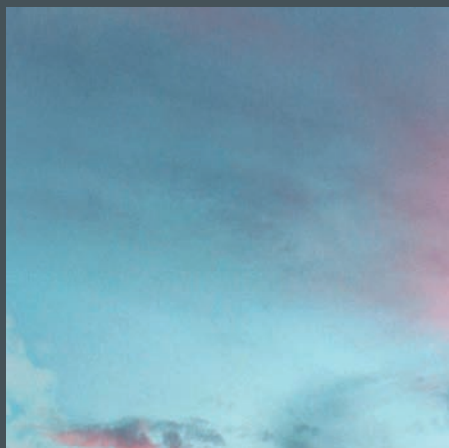


SAS

RAINSCREEN | INSULATION | RENDER | MESH | BEADS



COLOURTEX

SILICONE RESIN THIN COAT RENDER



**SAS Render Systems
provide unparalleled
excellence in rendering
and plastering solutions.
Explore our world of
quality at sas-europe.com**

Contact us today:

01647 24620
info@sas-europe.com

ProRend Colourtex is a premium, factory-batched, proprietary silicone resin thin-coat render.

PROREND
COLOURTEX
PREMIUM SILICONE THIN-COAT RENDER

This premium render delivers a high-performing finish with a wide range of attractive colours and is suitable for application onto a wide range of substrates.

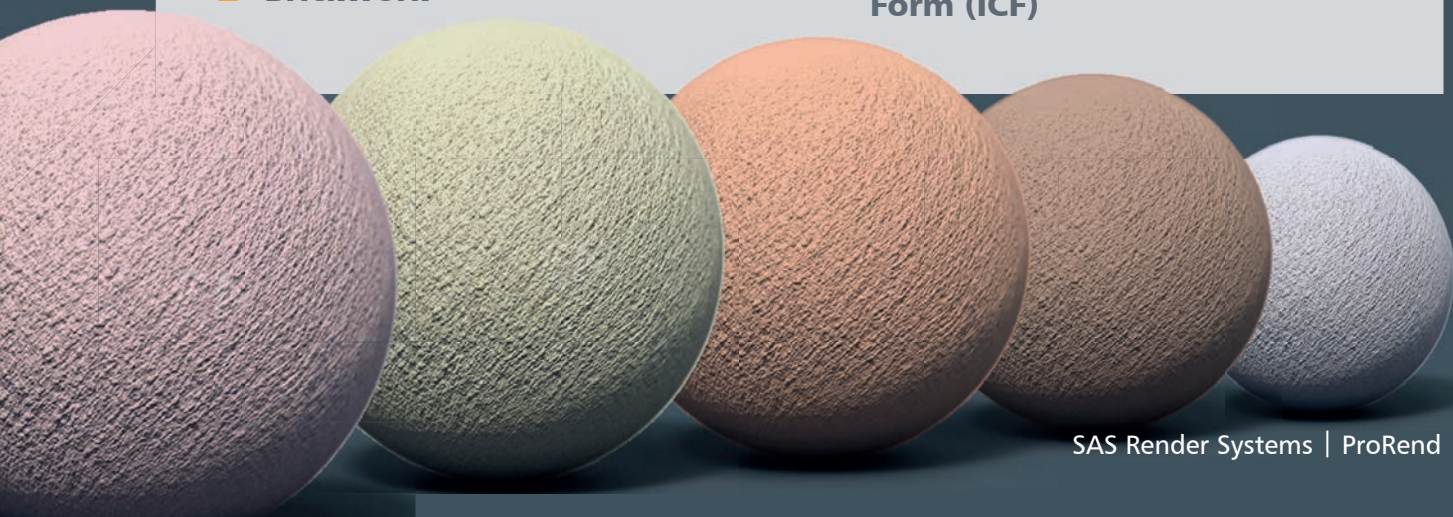
Features

- Colourtex has a highly flexible, silicone resin finish that accommodates small movements in the substrate
- A wide range of colours with superior colour-fastness due to a coloured primer
- Suitable for application by hand or spray machine for finishing with a ProRend Colourtex PVC float
- High-quality silicone resin gives excellent protection from driving rain — creating a durable, water-resistant coating
- Easily repaired
- Formulated using synthetic resin, Colourtex contains biocides that significantly reduce maintenance and improve product lifespan.



Ideal substrates

- Lightweight blockwork: 7kN or 3.5kN
- Existing render, unpainted
- New sand and cement
- Brickwork
- Pre-cast concrete
- Render carrier board
- Insulation that includes: expanded polystyrene, mineral fibre, and Insulated Concrete Form (ICF)





■ PROREND COLOURTEX

Get the results you
want **every time...**

With an extensive 10-year guarantee, SAS Render Systems' ProRend Colourtex redefines quality and durability while providing exceptional coverage. It's a versatile, low-maintenance solution that not only enhances properties but also stands the test of time.

Easy Application

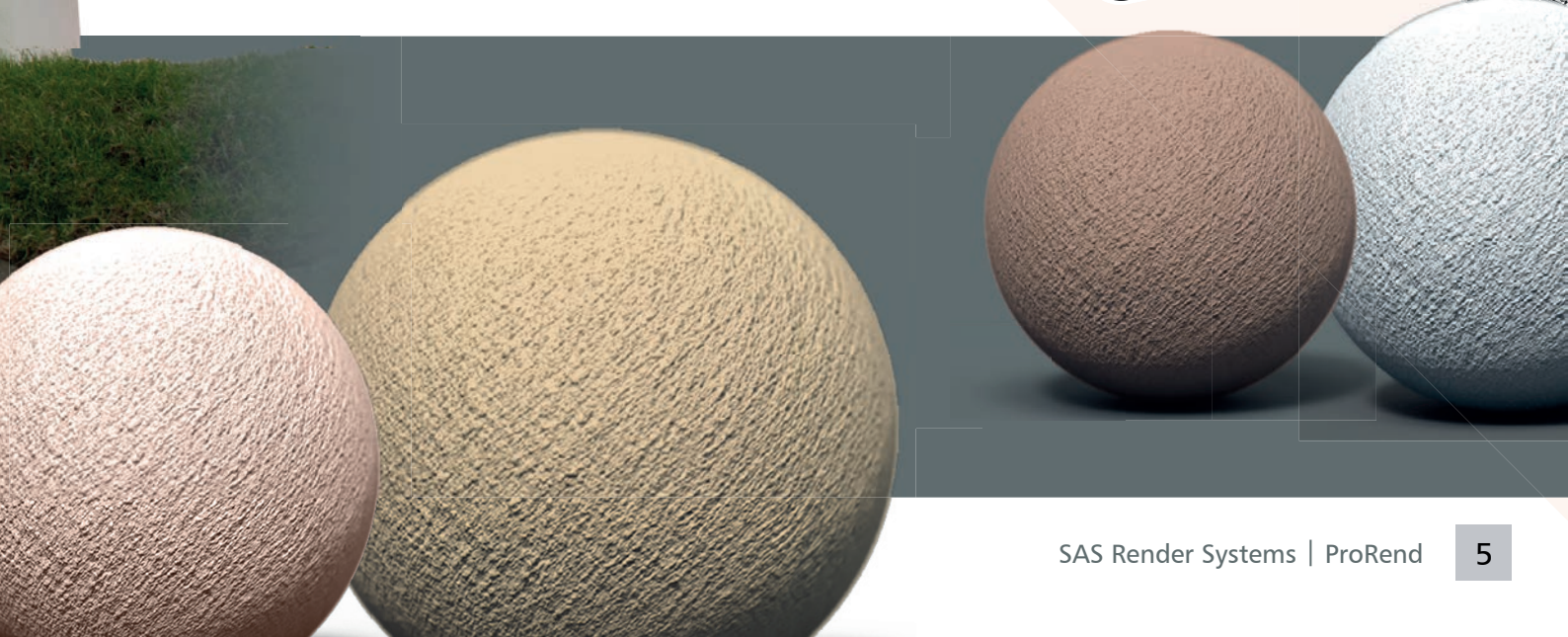
Colourtex can be effortlessly applied through spray application, a hopper and compressor set-up, or a handcrafted finish using a PVCu float.

In conjunction with a suitable ProRend basecoat, Colourtex is perfect for application on many different substrates.

We pride ourselves on offering honest, high-quality advice and support throughout.

**If you'd like help specifying your project,
call our friendly technical team on:**

01647 24620



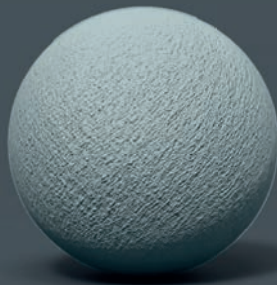
From traditionally classic to



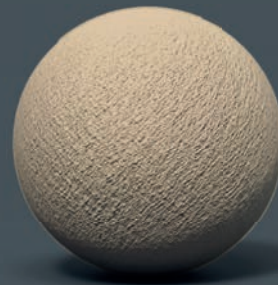
African Grey



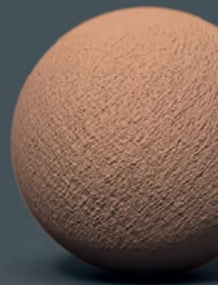
Atlantic



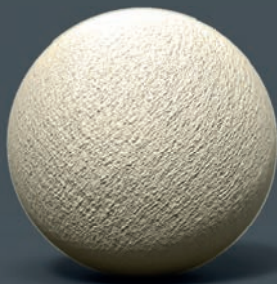
Cadet



Bamboo



Brick



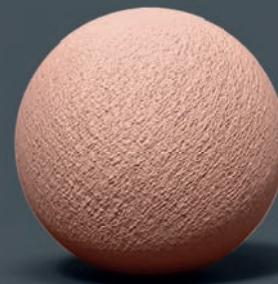
Cream



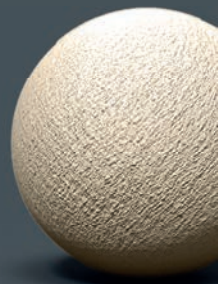
Dolphin



Dove



Dusk



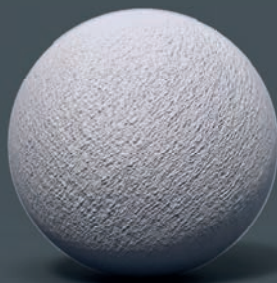
Fawn



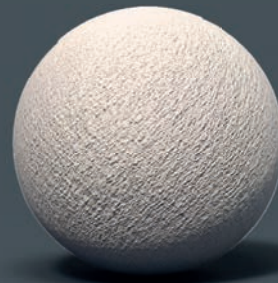
Mr Whippy



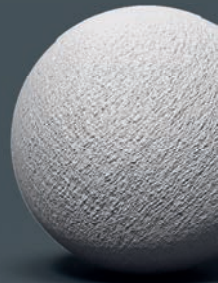
Ocean



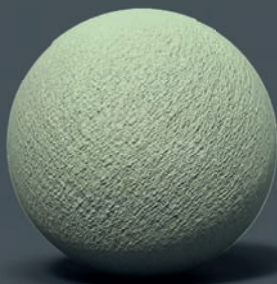
Parma Violet



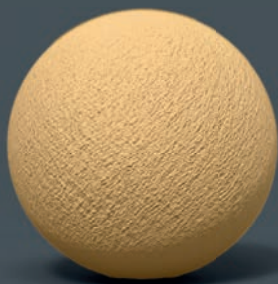
Peach



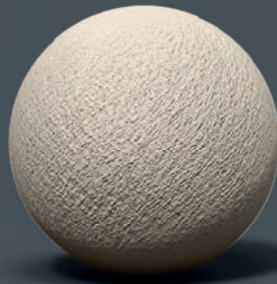
Pigeon



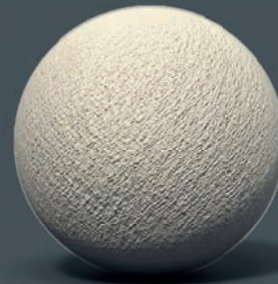
Sage



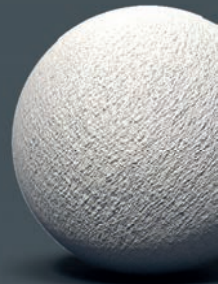
Sunbeam



Vanilla

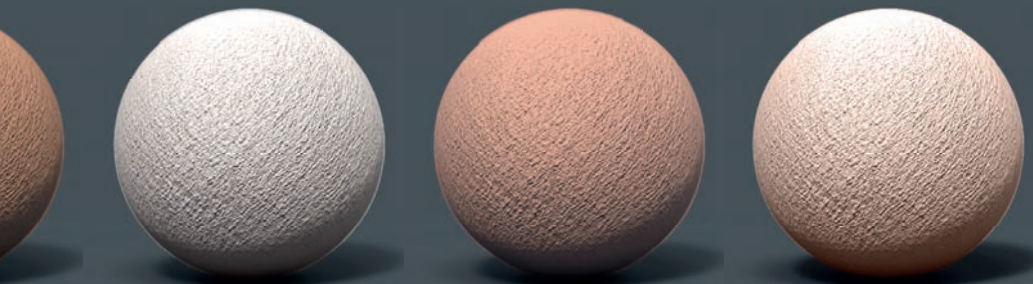


Wheat



White

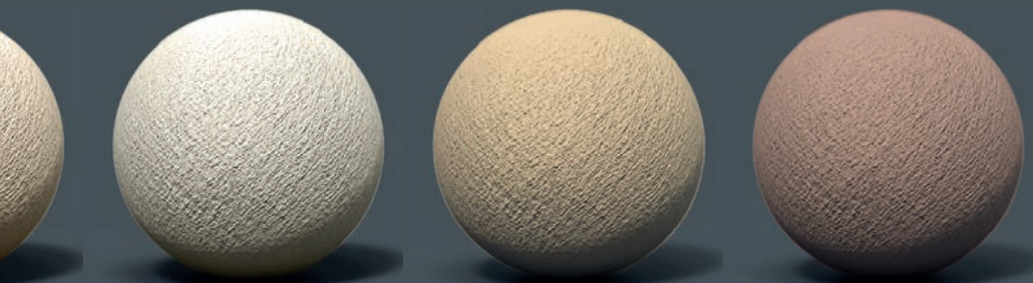
contemporary urban style...



Candy

Cappuccino

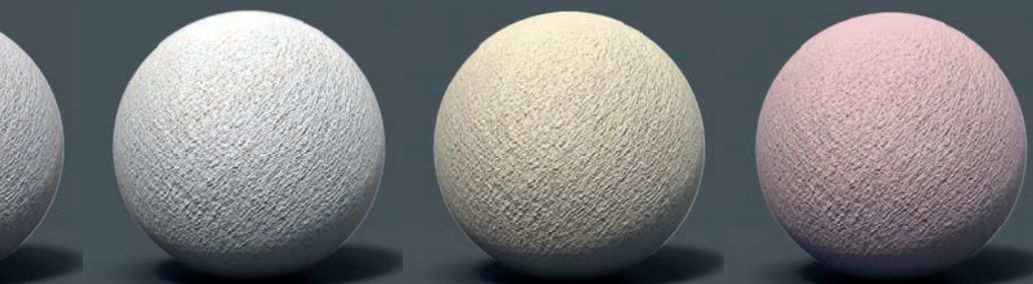
Cottage



Ivory

Latte

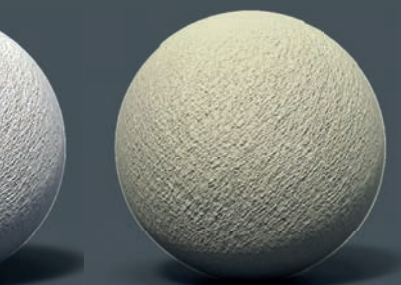
Mocha



Platinum

Primrose

Rambling Rose



Willow

Transform your projects and tailor to your clients' unique taste with Colourtex.

The Colourtex range comes in 30 standard colours.

Additionally, we can tint Colourtex render to your choice of RAL, NCS or BS colours, or even match a coloured sample.

Tinted at our headquarters using the universally recognised NCS colour system.



And with our range of 18 coloured ProBead rendering beads in a wide range of profiles, it's easy to achieve the perfect finish.

Please **contact us** today and request your choice of free samples.

30 beautiful standard colours



When you choose ProRend Colourtex, you gain free access to a dedicated and versatile technical team.

At SAS Render Systems, our technical team is committed to ensuring the success and longevity of your projects. With their support, your vision is in capable hands.

Our technical experts are always at your disposal. They can visit project sites and will be on hand to support you throughout the duration of your project. This commitment to customer service sets us apart.

Our team doesn't stop there. They are the driving force behind creating detailed specification documents and CAD details. They handle drawing take-offs, offer immediate technical support over the phone, and expertly guide you through our systems.

They can even provide training sessions at our Devon base, equipping you with the knowledge and skills needed to flawlessly apply our render systems. You can reach out to our technical team via 01647 24620 or info@sas-europe.com



**ProRend Colourtex
is available in two
attractive textures
1.5mm Uniform
or 3mm Grained.**

Suitable for application on a wide range of substrates and available in Uniform or Grained textures, Colourtex is a premium render that offers great performance in a wide range of attractive colours.

Uniform

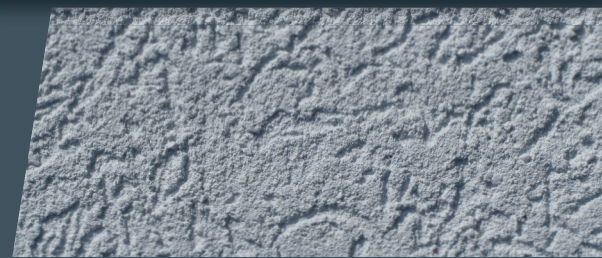
A smooth elegant finish that looks great anywhere, Uniform is a tight even finish similar to that of painted sand and cement.

Grained

A highly textured rustic finish, Colourtex Grained is used to achieve a traditional alpine effect.



Uniform



Grained

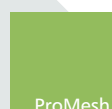
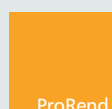
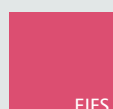
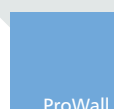
Technical Data

Colourtex Primer

General information	
PACKAGING, KG	16
BUCKETS / PALLET	44
WATER	5-10% l - maximum dilution
COVERAGE, M ² /BUCKET	35
SHELF LIFE, YEARS	~2
Technical Data EN 998-3: 2006	
L1 - BULK DENSITY, KG/M ³	~1.60
Additional Technical Data	
VISCOSITY	29,000 - 31,000 m Pas
PH	~7.9

Colourtex Uniform / Grained

General information	
PACKAGING, KG	17
BUCKETS / PALLET	44
WATER	2% l - maximum dilution
COVERAGE, M ² /BUCKET	
UNIFORM	~6 - 6.5
GRAINED	~4.5 - 5
SHELF LIFE, YEARS	~2
Technical Data EN 998-3: 2006	
L1 - BULK DENSITY, KG/M ³	~1.70
Additional Technical Data	
MAXIMUM GRAIN SIZE, MM	~3
VISCOSITY	450 Pas
PH	~8
WATER ABSORPTION COEFFICIENT	W = 0.1 kg/m ²



sas-europe.com

Basecoat selector

The ProRender range of basecoats cover the complete spectrum of substrates. Factory-batched dry mortars, they are high quality, durable and give excellent results.

Substrate	Float	Prep	Lite
7KN DENSE CONCRETE BLOCK	■		
3.5KN DENSE CONCRETE BLOCK	■		
LIGHTWEIGHT BLOCK	■	■	
EXISTING RENDER, UNPAINTED		■	
NEW SAND AND CEMENT	■	■	
RENDER CARRIER BOARD			■
BRICKWORK	■	■	
PRE-CAST CONCRETE		■	
ICF: INSULATED CONCRETE FORM			■
EXPANDED POLYSTYRENE			■
MINERAL FIBRE INSULATION			■

Colourtex should only be applied to any substrate using the appropriate basecoat. This table should be used as a general guide only; please call SAS on 01647 24620 and speak to a member of our skilled Technical Sales team about the specifics of your project. They can assist by recommending the most appropriate solutions and advice.



■ PROREND Basecoats

LITE - PREP - FLOAT

Hard-Working Render Basecoats

ProRend render basecoats are a range of factory-batched proprietary renders based on Portland cement. All are supplied as dry mortars that only need mixing with clean water.

Depending on what surface you are applying render to, you may need a basecoat applied first. The correct basecoat will ensure that the render adheres strongly and cures evenly. Our technical team can help you choose from the ProRend basecoats.

■ PROREND FLOAT

A high quality dry mortar, Float is ideal for use on masonry and offers a great value alternative to sand and cement.

Features

- **A lightweight lime sand cement that can be applied by hand or machine**
- **Perfect substitute for sand and cement that avoids on-site mixing and measuring**
- **Ideal for use as a basecoat for all ProRend decorative renders or masonry paint**
- **Can be smooth finished, sponge textured or keyed to receive another coat.**



■ PROREND LITE

High quality polymer-modified dry mortar. It's an ideal basecoat for the Colourtex range of decorative finishes.

Features

- Can be applied by hand or machine
- The perfect basecoat for Colourtex, or as a key coat for other ProRend basecoats
- Lite is ideal for a smooth finish or sponged texture and can be keyed to receive subsequent coats.



■ PROREND PREP

A superb, factory manufactured dry mortar that's particularly well suited to levelling and renovation on mineral and synthetic surfaces.

Features

- Prep works well on backgrounds with varying absorption properties, such as lightweight block or pre-cast concrete
- Perfect substitute for sand and cement that avoids on-site mixing and measuring
- A suitable basecoat for all ProRend decorative renders or masonry paint
- Can be smooth finished, sponge textured or keyed to receive a further coat.



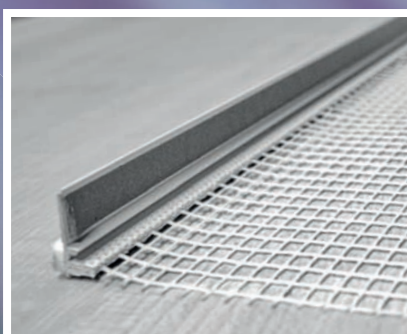
All the **bead** you'll ever need...

At SAS Render Systems there's a bead for every situation. With 18 standard colours and a choice of thousands of custom colours available on bulk orders, ProBead is known for its high quality and trusted for its strength and durability.

Designed to last, ProBead is manufactured from 100% recycled plastic, ensuring reduced environmental impact. There's a choice of 34 external and internal profiles.

BBA certified for 25 years, ProBead is the market-leading bead for render and plaster.

 **PROBEAD**



Colourtex Bead selector

It's easy to achieve the look you want. With 30 Standard Colourtex shades and 18 standard bead colours. Create a custom combo or follow our colour recommendations. With 540 possible options, there's a world of choice.

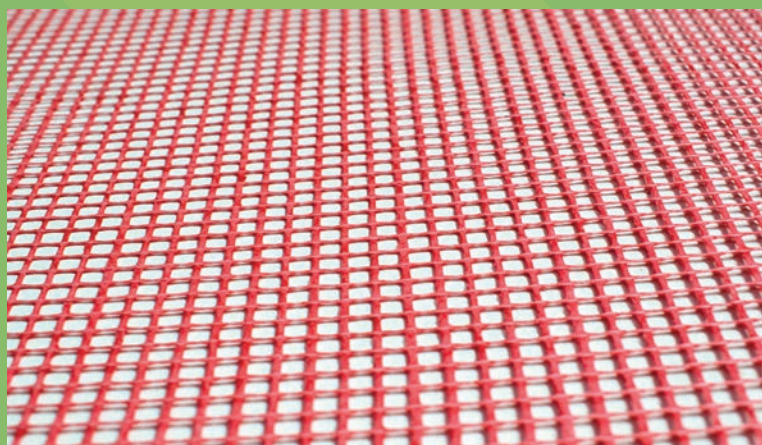
		PROBEAD COLOUR																	
		AFRICAN GREY	BAMBOO	BRICK	CANDY	COTTAGE	DOLPHIN	DOVE	FAWN	IVORY	MR WHIPPY	OCEAN	PEACH	PRIMROSE	SAGE	SUNBEAM	WHEAT	WHITE	WILLOW
COLOURTEX COLOUR	AFRICAN GREY																		
	ATLANTIC																		
	CADET																		
	BAMBOO																		
	BRICK																		
	CANDY																		
	CAPPUCCINO																		
	COTTAGE																		
	CREAM																		
	DOLPHIN																		
	DOVE																		
	DUSK																		
	FAWN																		
	IVORY																		
	LATTE																		
	MOCHA																		
	MR WHIPPY																		
	OCEAN																		
	PARMA VIOLET																		
	PEACH																		
	PIGEON																		
	PLATINUM																		
	PRIMROSE																		
	RAMBLING ROSE																		
	SAGE																		
	SUNBEAM																		
	VANILLA																		
	WHEAT																		
	WHITE																		
	WILLOW																		

■ PROMESH

Available in 5 grades, ProMesh offers superior quality reinforcement for all your rendering and plastering.

Durable and tear-resistant, ProMesh is a robust alkaline-resistant mesh suited to internal and external projects and perfect reinforcement when laid into screed flooring.

Lightweight but rugged, the ProMesh 10-year guarantee gives excellent performance and the peace of mind that using a market-leading, premium mesh can offer.





"I have been machine rendering for over 15 years, and in that time, I have used and dealt with most of the manufacturers who supply render systems.

In my opinion, SAS Europe is second to none when it comes to material quality with a technical team that really know their products and systems. Unbelievable technical backup."

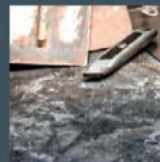
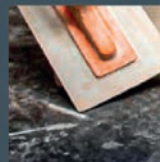
Paul Roberts
Mid Devon Plastering

ProRend By
Mid Devon Plastering



SAS

RAINSCREEN | INSULATION | RENDER | MESH | BEADS



TOOLKIT

QUALITY RENDERING TOOLS

■ PROTOOLS

A range of rendering tools is available from SAS Render Systems.

Ask us about the best tools to use with SAS render products.


View our catalogue



Contact us today:

01647 24620
info@sas-europe.com






Explore our selection of 30 standard beautiful colours, we understand that choosing the perfect one can be a bit challenging. We're here to help you make that choice easier.

30 beautiful
standard **colours**





You can also choose from a wide spectrum of RAL, NCS, or BS colours, or even replicate any shade from a coloured sample.

Order your samples now
01647 24620

From traditionally classic to contemporary urban style...



SAS



PROREND

PREMIER RENDER SYSTEMS

COLOUR YOUR WORLD WITH PROREND

With over 35 years of hands-on experience in the rendering and plastering industry, SAS is your trusted partner. Our expertise ranges from practical material application to on-site technical troubleshooting. We are committed to improving our service and providing timely, top-notch information.

Driven by innovation, we develop cutting-edge products tailored to meet the needs of the market. Our product portfolio boasts premium quality offerings that ensure durability for property owners and swift, technically sound application for contractors.

Express Nationwide Delivery

Stock items and palletised goods: 1-3 working days

Non-stock items: Up to 10 working days

Office Hours

Monday-Thursday: 08:00-16:30

Friday: 08:00-16:00

Call us today: **01647 24620**

sas-europe.com

ProRend and Colourtex are part of the SAS (Europe) Ltd range of products and systems. Information contained in this brochure is correct at the time of print. SAS (Europe) Ltd reserve the right to make alterations to the content of this brochure and to the products and services we make available as part of our continuing commitment to improvement.

SAS (EUROPE) LTD

CHERITON BISHOP | EXETER | EX6 6JE | UK

T: +44 (0)1647 24620 F: +44 (0)1647 24020

E: info@sas-europe.com



SAS23-006