



COMBINATION SHOWER

PRODUCT CODE
S2340

Date: March 2014

Combination Station, Stainless Steel Bowl Eye/Face Wash and Shower Head

Model S2340 is a pedestal mounted combination station with an eye/face wash, with a stainless steel bowl, ABS plastic eye/face wash spray heads, an inline strainer and a stay-open 1/2" ball valve with a push handle and a shower with a stainless steel shower head and a 1" stay-open ball valve with a pull rod.

Standard Equipment:

Shower head: Stainless steel, 188 mm diameter shower head with a 75 litres/minute flow regulator.

Shower Valve: 1" rough chrome plated brass stay-open ball valve. Unit is provided with a stainless steel actuator arm and a 737 mm stainless steel pull rod.

Eye/Face Wash Bowl: Stainless steel, 300 mm diameter bowl.

Spray Head Assembly: ABS yellow plastic eye/face wash heads with integral flip dust covers, internal flow controls and filters to remove debris from the water.

Eye/Face Wash Valve: 1/2" chrome plated brass stay-open ball valve with a stainless steel push handle and a 50 mesh inline strainer.

Water Supply: 1-1/4" BSP female threaded side or top inlet.

Waste: 1-1/4" female outlet.

Piping & Mounting: Schedule 40 galvanised steel piping and a 232 mm diameter cast iron floor flange with a yellow powder coated finish.

Universal Sign: ANSI compliant, vertical identification sign.

Weekly Test Tag: A water proof test card to record the date and inspector's name for weekly functional testing of the unit.

Accessories:

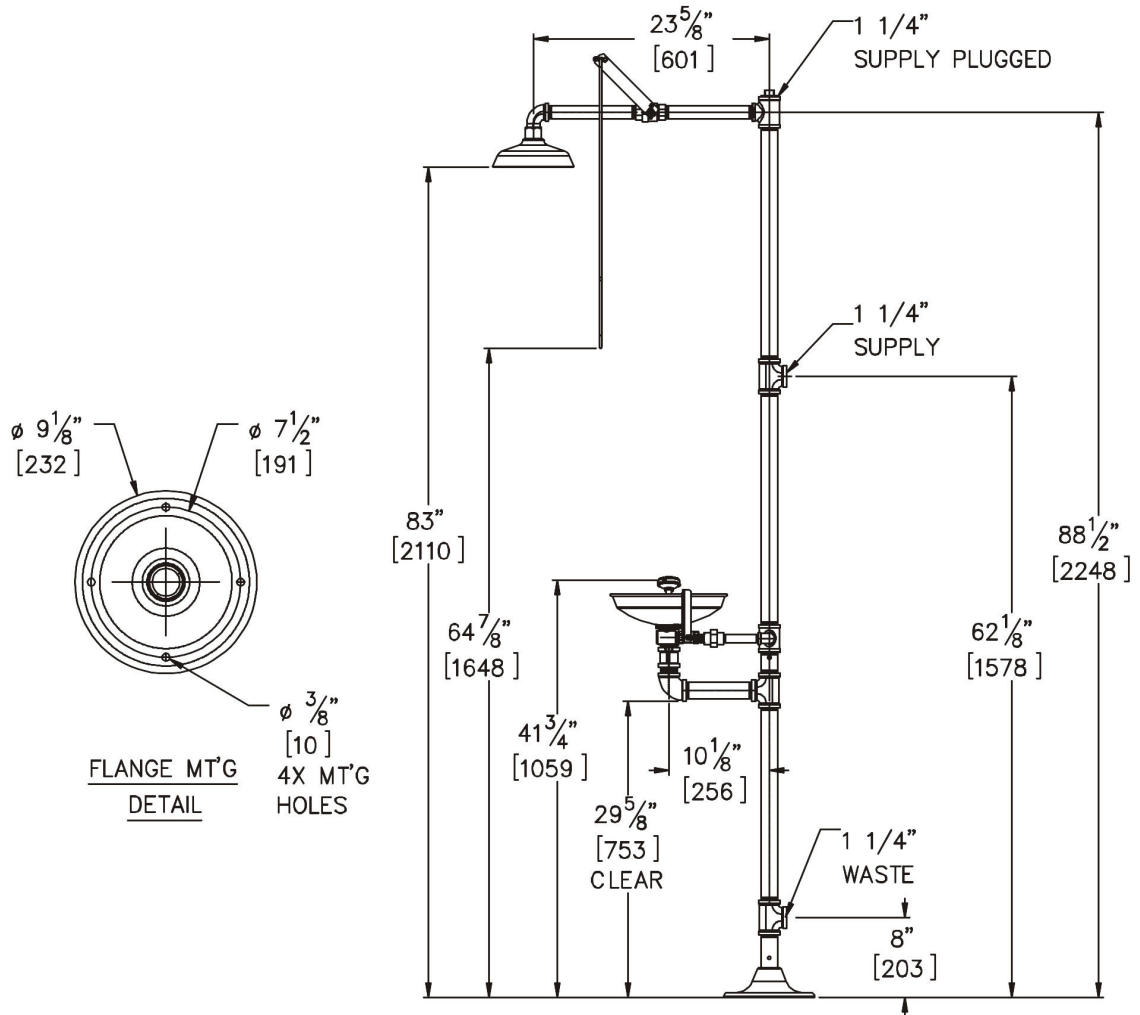
- ◆ HFC: Hand/Foot control assembly
- ◆ CSC: Stainless steel clam shell cover for eye/face wash
- ◆ ADH: Auxiliary hand-held drench hose

Compliances:

Test rating conditions are compliant to ANSI Z358.1-2009



□ **Model S2340** : Combination Station, Stainless Steel Bowl Eye/Face Wash and Showerhead



GENERAL NOTES:

1. ALL DIMENSIONS ARE IN INCHES [MM].