

INTRAFORM® DM LOW PROFILE



INTRV

INTRAFORM® DM LOW PROFILE

Heavy duty aluminium entrance matting that combines the performance advantages of extra wide fibre with a low profile design for versatile installation.

- Heavy Duty aluminium entrance matting
- **12mm low profile design** for surface mounted or shallow recessed applications
- **Extra width fibre** for optimum moisture absorption
- **Closed construction** – simple to clean and maintain
- Extremely durable and effective
- **Fully DDA compliant** and 100% recycled aluminium construction
- Suitable for all **high traffic** areas

Z
1&2

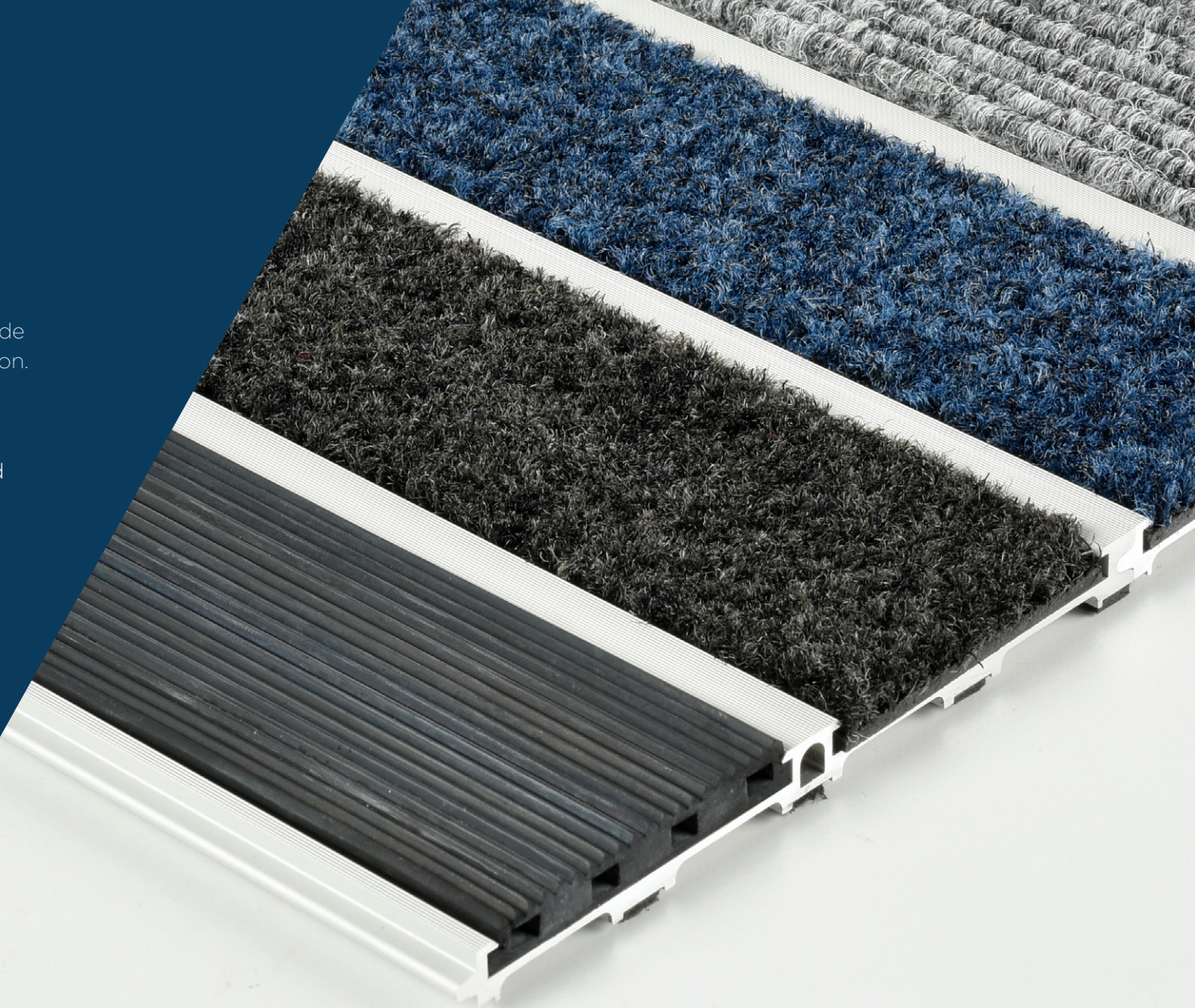
Zonal
Options

↓↓↓
HIGH

Strength
Rating

10

10 Year
Warranty



ECONYL®
100% Regenerated Nylon

PUREBASE®

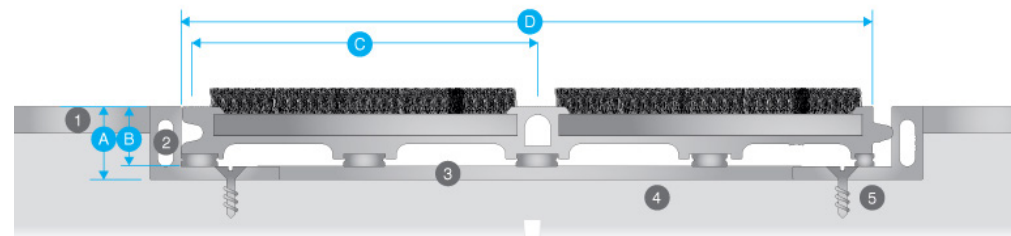


SPECIFICATION

INTRAform® DM Low Profile

| | |
|---------------------|--|
| Product Reference | INTRAform DM Low Profile entrance matting |
| Strength Rating | High – suitable for areas with heavy foot and wheeled traffic |
| Zonal Location | Use Zone 1 inserts for external areas Use Zone 2 inserts for internal areas Combination Zone 1 & 2 inserts can be specified for dual performance Surface mounted applications with use of ramped edging |
| Construction | 100% recycled aluminium construction. Closed construction interlocking plank system. |
| Sustainability | 100% recycled aluminum. All inserts recyclable/re-usable 100% Econyl® fibre (Elite, Ultimate & Select) |
| Typical Application | High traffic locations such as shopping centres, commercial offices, retail stores etc |
| Design Options | Wide range of design options available Bespoke anodised to special order |
| Weight | 10.5kg/m ² |
| Matwell Framing | INT014 |
| Slip Rating | Will vary with insert, in excess of PTV 38 |
| Warranty | 10 years |
| Uniclass 2015 | Pr_35_57_11_26 Entrance Mats |
| CAWS | N10/300 Entrance Matting |

PROFILE



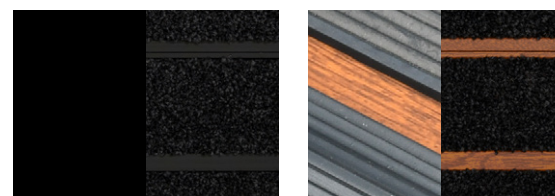
- A 14mm
- B 11.5mm
- C 66.4mm module
- D 132.8mm plank size
- 1 Finished floor surface
- 2 Recessed matwell frame
- 3 Levelling latex to matwell base
- 4 Screed sub-floor
- 5 Screw fixings

PROFILE COLOUR OPTIONS



Standard

Bronze



Black

Wood

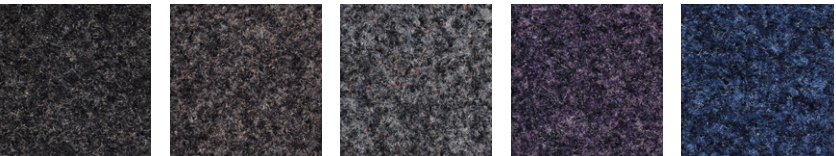


INSERTS

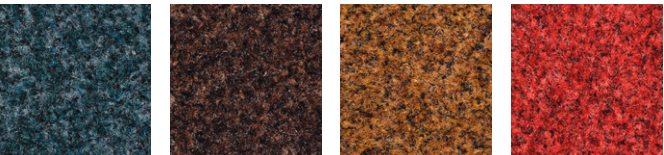
INSERTS - ZONE 2

INTRAlux® Elite

Recommended for effective scraping and dirt removal

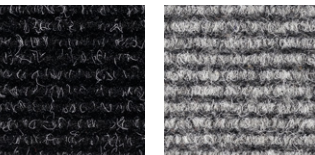


608 Black 607 Anthracite 606 Grey 609 Purple 602 Blue



610 Turquoise 605 Brown 604 Coco 601 Red

INTRAlux® Linear



443 Anthracite 451 Grey

INTRAlux® Select



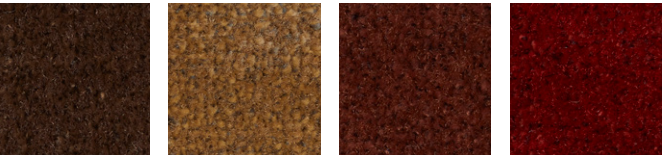
208 Black

INTRAlux® Ultimate

Recommended for rapid moisture absorption

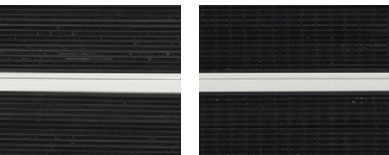


906 Night Sky 907 Anthracite 910 Stone 912 Lichen 913 Forest Green



905 Truffle 904 Sandstone 914 Terracotta 901 Ruby

INSERTS - ZONE 1



Ribbed Rubber Multi Directional Rubber



ENVIRONMENT & SUSTAINABILITY

INTRAsystems has an undeviating commitment to act responsibly in its care of the environment. Working on key projects throughout the UK and Europe, the company is familiar with all environmental ratings such as Ska, BREEAM and WRAP to help clients achieve, and exceed, their sustainability goals.

We are ISO 14001 accredited and all production processes are managed in accordance with the Waste Management Act, with a clear goal to 'reduce the production of waste and its harmful effects.' INTRAsystems regularly reviews its wider operations to minimise negative environmental impacts.

Our Environmental Sustainability Statement sets clear targets for ongoing improvement to ensure the company continues to play its part in helping tackle the climate crisis. Environmental credentials for each fibre option are provided and highlighted throughout this brochure.



BREEAM®

ECONYL®

Benefits of specifying ECONYL® fibre

ECONYL® is regenerated nylon that would otherwise pollute the Earth. It is the same as brand new nylon and can be infinitely recycled, recreated and remoulded. ECONYL® is Cradle-to-Cradle certified and therefore our fibres are eligible for LEED® v4 points, as part of the LEED green building rating system.

PUREBASE®

Benefits of specifying PureBase backing

PureBase is a new, PVC-free backing material for entrance matting. It has a significantly lower environmental impact in terms of production processing, greenhouse gas emissions and end of life waste disposal. PureBase is 20% lighter and 3 x more flexible for easier handling and installation.







CPD
PROVIDER

Find us on:



NBS

bimstore



INTRA.
SYSTEMS

6 COBHAM ROAD, WIMBORNE, DORSET, BH21 7PE

01425 472000 INTRASYSTEMS.CO.UK

INTRAFORM® DM LP V1.0