



Approved for **Section 12** locations

INTRAsform FR & Waterlogic

Entrance Matting for London Underground

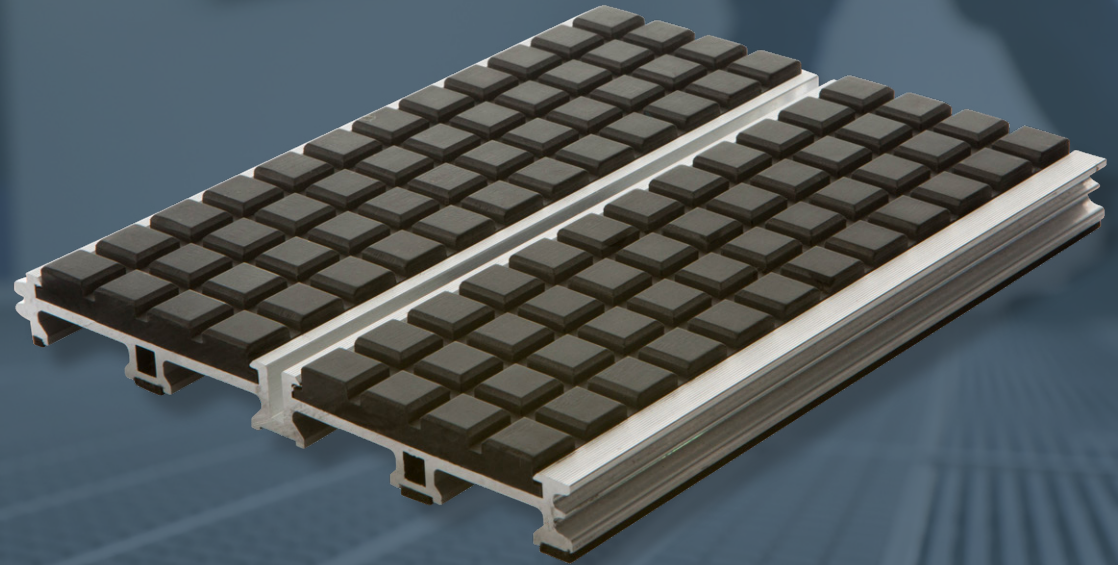
INTRAs.
SYSTEMS

ENHANCING BUILDINGS BY DESIGN

INTRAform FR

Heavy-duty aluminium entrance matting with **specialist multi-directional fire-resistant and low toxic smoke emission inserts**, approved for **Section 12** locations.

Specifically designed for **high risk areas** such as the **London Underground** and **Crossrail**, INTRAform FR is listed on the **London Underground Product Register**.



Key Features:

Ultra heavy duty entrance matting for extreme traffic areas

Designed for high fire risk, Section 12 locations.

Approved for use in Underground stations

Exceptional durability and load-bearing capacity

Multi-directional inserts for optimum performance

Open drainable construction

100% recycled aluminium

Meets BS 6853 Cat 1a and EN 45545-2 HL3 standards



DDA compliant



Extreme strength



Heel proof

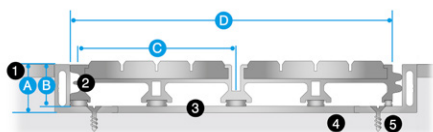


INTRAform FR is listed on the **London Underground Product Register** and is **authorised for use** across the London Underground Network including **Section 12 locations**.

[Request samples](#)

[Visit website](#)

Profile



- A** 19mm
- B** 16.5mm
- C** 66.4mm Profile
- D** 132.8mm Plank

- 1** Finished floor surface
- 2** Recessed matwell frame
- 3** Levelling latex to matwell base
- 4** Screed sub-floor
- 5** Screw fixings

Specification

Product Reference	INTRAform FR Heavy Duty Entrance Matting
Installation	Into suitable recessed matwell area, with surface of mat level with adjoining floor covering Surface mounted applications with use of ramped edging
Location	High Traffic environments Internal and External applications
Construction	100% recycled aluminium construction. Open drainable/closed construction, interlocking plank system
Weight	19.6kg /m2
Depth	16.5 mm
Temperature Resistance	Aluminium resistance - -50°C to +90°C
Matwell Framing	INT019
Finish	Mill Finish Aluminium as standard Anodised in any RAL colour to special order
LU Product Reg Cert No.:	2123
Slip Resistance (BS7976-2:2002 +A1: 2013)	Dry: 72 Wet: 44
Warranty	15 years

Insert



Grey Multidirectional

NBS Specification

Typical Specification:

Uniclass 2015: Pr_35_57_11_26 Entrance mats
CAWS: N10/300 Entrance matting

Manufacturer:

INTRASystems
14 Headlands Business Park, Salisbury Road, Blashford, Ringwood BH24 3PB
Tel 01425 472000 Fax 01425 481981
info@intrasystems.co.uk
www.intrasystems.co.uk

Product Reference:

INTRAform FR Heavy Duty Entrance Matting, multidirectional, Open/Closed construction

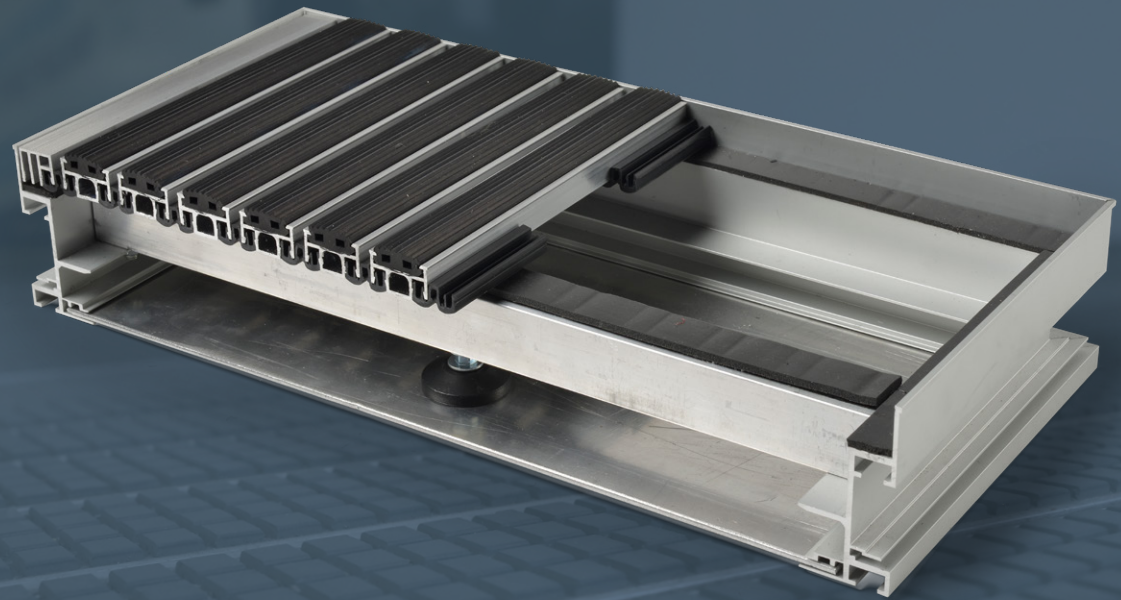
Product Description:

Heavy Duty Aluminium Entrance Matting with specialist fire-resistant & low smoke emission multidirectional inserts
Designed for use in extreme traffic areas
Installed in accordance with manufacturer's instructions

INTRAmatting Waterlogic

A drainable entrance matting support system designed for **both internal and external areas** of **extreme traffic flow** and **excessive moisture ingress**.

80mm deep system provides a capacity of **75 L/m²** for **ultimate performance** and **exceptional load bearing**.



Key Features:

High volume
75 L/m² capacity

Exceptional durability

Suitable for internal and
external applications

Strong aluminium
construction for
extreme loading

Provides effective
fall-away to minimise
tracking

Compatible with open
construction matting



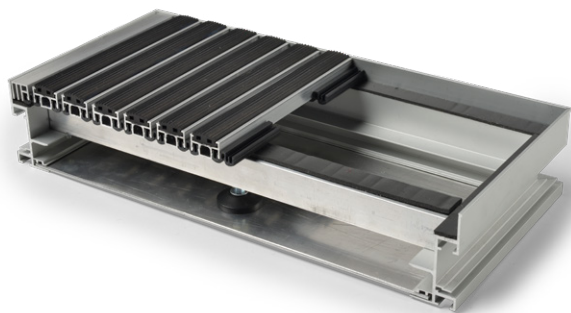
75L/m² capacity



Extreme
strength



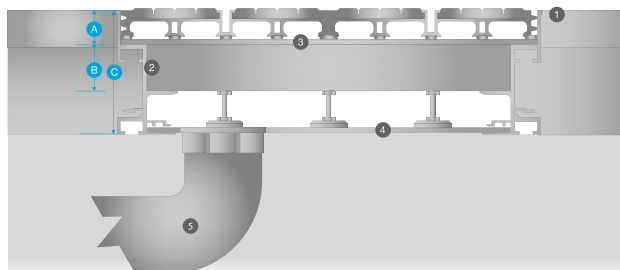
Internal or
external



[Request samples](#)

[Visit website](#)

Profile



A 22mm

B 30mm

C 80mm Profile

1 Finished floor surface

2 Support Profile

3 Entrance matting systems

4 Stainless steel/waterproof membrane
(supplied by others)

5 Indicative drainage outlet (not supplied
with system)

Specification

Product Reference	INTRAmatting Waterlogic drainable matwell system
Compatibility	Open Construction: INTRAflex XT, INTRAflew, INTRAflew Plus, INTRAform FR
Installation:	In suitable recessed matwell area with surface of mat level with adjoining floor covering. Can be customised to fit bespoke matwell bases
Location	Internal or external, High traffic environments with high soil & moisture ingress
Construction	80mm deep aluminium forming profile to surround of matwell. Installed onto screed base / waterproof membrane supplied by others. Support profiles installed perpendicular to matting profiles, minimum 300mm centres
Capacity	75 L/m ²
Depth	80mm
Warranty	15 years

NBS Specification

Typical Specification:

Uniclass 2015: Pr_35_57_11_26
Entrance mats
CAWS: N10/300 Entrance matting

Manufacturer:

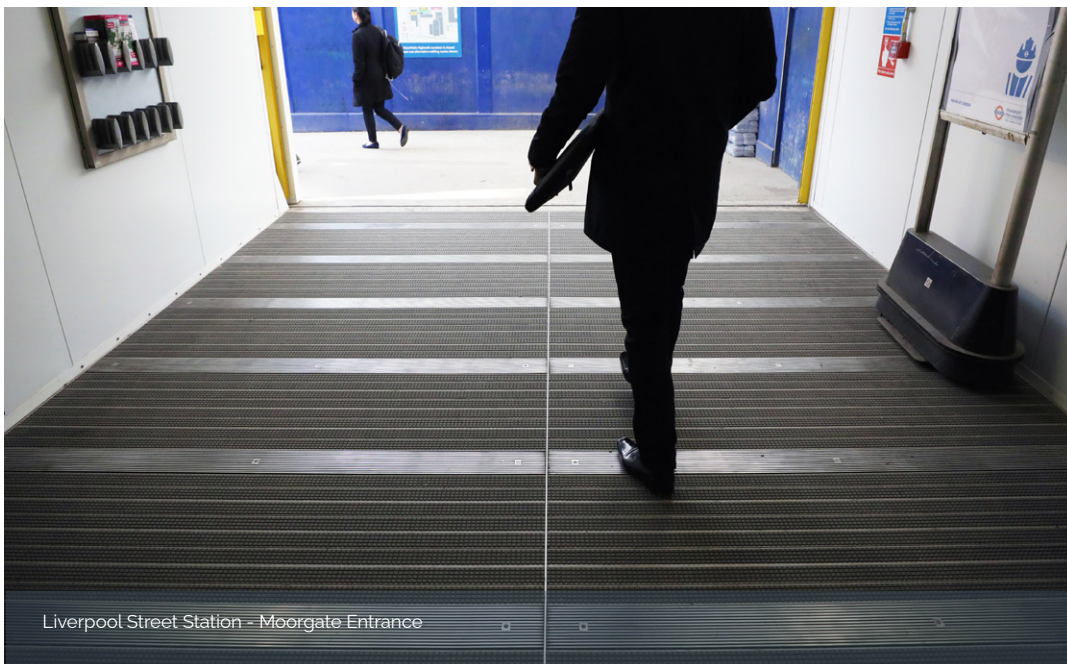
INTRAsystems
14 Headlands Business Park, Salisbury
Road, Blashford, Ringwood BH24 3PB
Tel 01425 472000 Fax 01425 481981
info@intrasystems.co.uk
www.intrasystems.co.uk

Product Reference:

INTRAmatting Waterlogic drainable
matwell system

Product Description:

Drainable support system designed to provide optimum performance in areas of extreme traffic flow and excessive moisture ingress. Installed in accordance with manufacturer's instructions. Laid to fall with drainage outlet (supplied by others).



Liverpool Street Station - Moorgate Entrance



Liverpool Street Station - Moorgate Entrance



Canning Town Station



London Bridge Station

INTRAS. SYSTEMS

Head Office: INTRASystems
14 Headlands Business Park,
Salisbury Road, Blashford,
Ringwood BH24 3PB

Tel +44 (0)1425 472000

Fax +44 (0)1425 481981

info@intrasystems.co.uk

www.intrasystems.co.uk

INTRASystems is a brand of Axis House Ltd (reg. 11583672)

While every effort is made to ensure accurate representation of colours, variations may occur due to limitations in the printing process.

All designs and illustrations contained within this catalogue remain the copyright of Axis House.

All trademarks, product names and codes detailed within this catalogue are the property of Axis House.

Axis House cannot accept responsibility for any loss or damage that may occur either directly or indirectly by the use or fixing method of their products, or information provided.

Axis House reserve the right to change product or specifications without notice.

Copyright © Axis House.