

---

# INTRAFLEX® RADIAL

# INTRV.

# INTRAFLEX® RADIAL

A unique product using advanced engineering techniques to form profiles to a consistent radius. INTRAFlex Radial is designed for use in and beyond revolving doors, or to suit shaped building facades and architect-designed feature areas.

- **Heavy Duty** Recessed Aluminium Entrance Matting
- Suitable for all **high traffic** areas
- Bespoke manufactured to **suit any radius**, minimum diameter 750 mm
- Fully compatible with the straight profile INTRAFlex XT version
- Open channels create clean lines for a sharp design aesthetic
- Suitable for internal and external applications – with all fibre and rubber inserts
- Curved design ensures optimum performance with radial traffic flow
- **Open construction** – allows dirt to fall through into recess

**Z**  
1&2

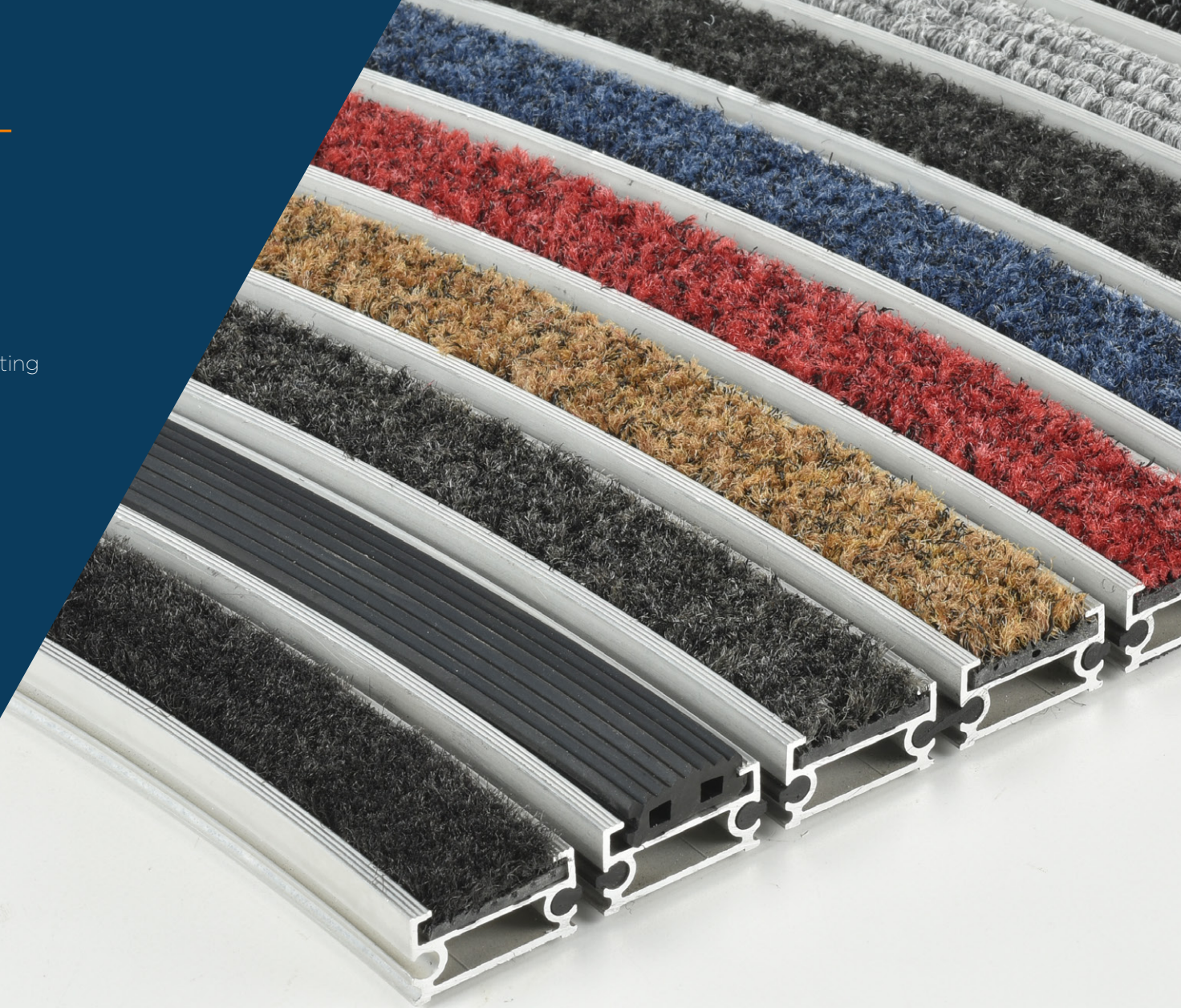
Zonal  
Options

↓↓↓  
**HIGH**

Strength  
Rating

**10**

10 Year  
Warranty



**ECONYL®**  
100% Regenerated Nylon

**PUREBASE®**

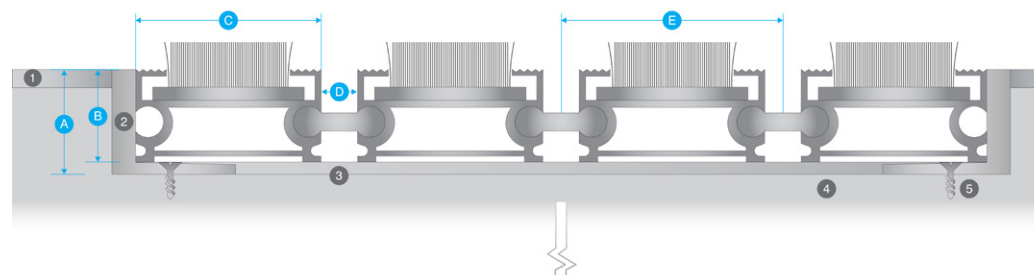


# SPECIFICATION

## INTRAflex® Radial

Product Reference	INTRAflex Radial Entrance Matting
Strength Rating	High – suitable for areas with heavy foot and wheeled traffic
Zonal Location	Use Zone 1 inserts for external areas Use Zone 2 inserts for internal areas Combination Zone 1 & 2 inserts can be specified for dual performance
Smallest internal diameter	750mm
Construction	Heel Proof Open Construction – allows dirt and moisture to fall through into the matwell below
Sustainability	100% recycled aluminum. All inserts recyclable/re-usable 100% Econyl Fibre (Elite, Ultimate & Select)
Typical Application	Extreme & High Traffic locations such as Airports, Stations, Shopping Centres, Commercial Offices etc
Design Options	Bespoke anodised to special order
Weight	21.1kg/m2
Matwell Framing	INT019 & INTF019
Slip Rating	Will vary with insert, in excess of PTV 38
Warranty	10 years
Uniclass 2015	Pr_35_57_11_26 Entrance Mats
CAWS	N10 / 300 Entrance Matting

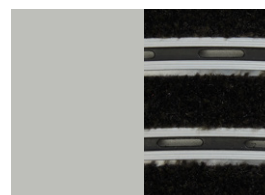
## PROFILE



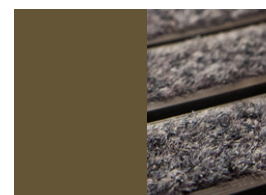
A 21mm  
B 18mm  
C 30mm  
D 5mm  
E 35mm

1 Finished Floor surface  
2 Recessed matwell frame  
3 Levelling latex to matwell base  
4 Screed sub-floor  
5 Screw fixings

## PROFILE COLOUR OPTIONS



Standard



Bronze (Bespoke)



Black (Bespoke)



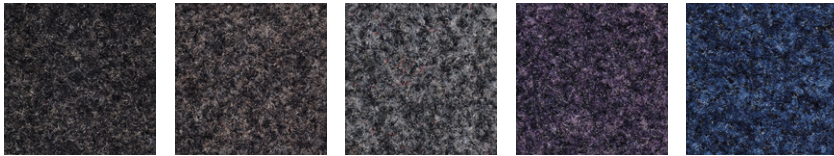


# INSERTS

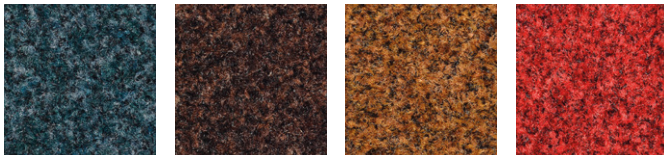
## INSERTS - ZONE 2

### INTRAlux® Elite

Recommended for effective scraping and dirt removal

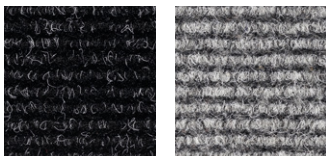


608 Black      607 Anthracite      606 Grey      609 Purple      602 Blue



610 Turquoise      605 Brown      604 Coco      601 Red

### INTRAlux® Linear



443 Anthracite      451 Grey

### INTRAlux® Select



208 Black

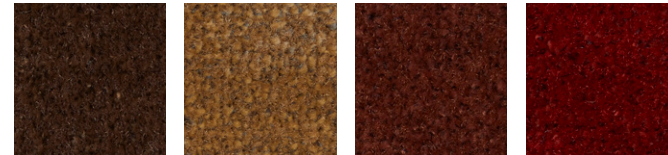
### INTRAlux® Ultimate

Recommended for rapid moisture absorption

**PUREBASE®**

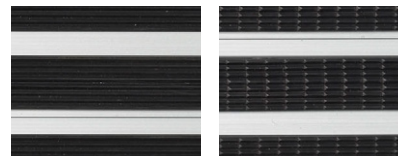


906 Night Sky      907 Anthracite      910 Stone      912 Lichen      913 Forest Green



905 Truffle      904 Sandstone      914 Terracotta      901 Ruby

## INSERTS - ZONE 1



Ribbed Rubber      Multi Directional Rubber





# ENVIRONMENT & SUSTAINABILITY

INTRAsystems has an undeviating commitment to act responsibly in its care of the environment. Working on key projects throughout the UK and Europe, the company is familiar with all environmental ratings such as Ska, BREEAM and WRAP to help clients achieve, and exceed, their sustainability goals.

We are ISO 14001 accredited and all production processes are managed in accordance with the Waste Management Act, with a clear goal to 'reduce the production of waste and its harmful effects.' INTRAsystems regularly reviews its wider operations to minimise negative environmental impacts.

Our Environmental Sustainability Statement sets clear targets for ongoing improvement to ensure the company continues to play its part in helping tackle the climate crisis. Environmental credentials for each fibre option are provided and highlighted throughout this brochure.



**BREEAM®**

## ECONYL®

### Benefits of specifying ECONYL® fibre

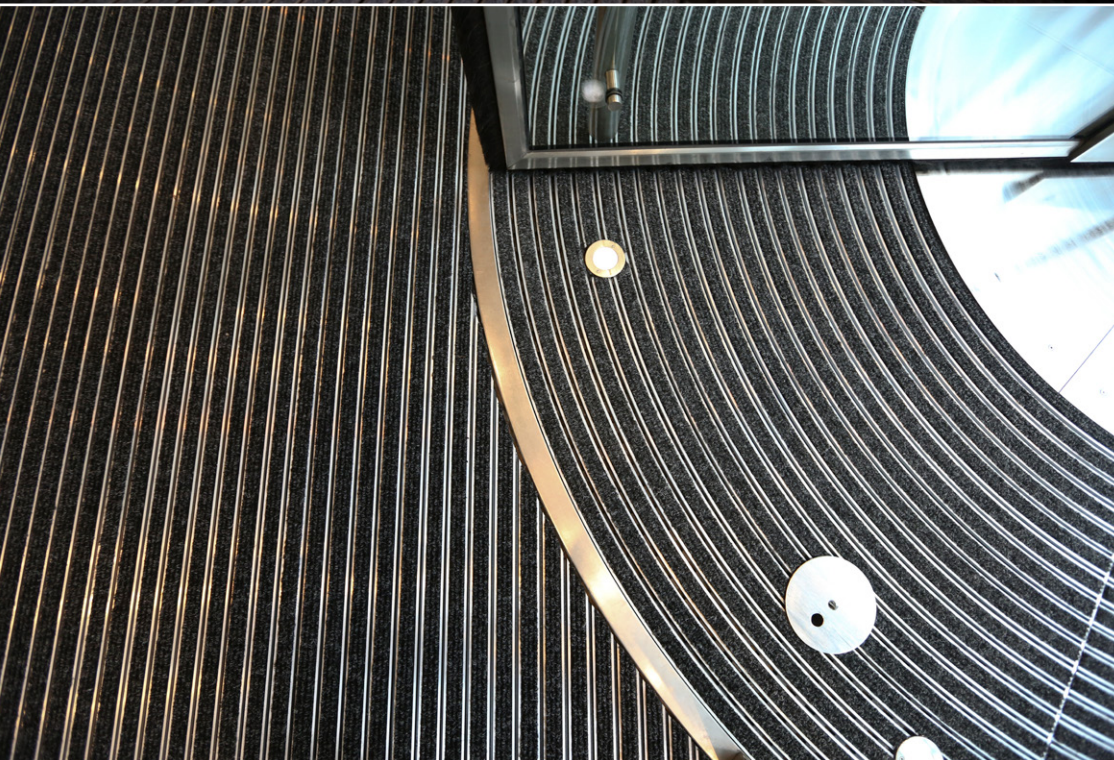
ECONYL® is regenerated nylon that would otherwise pollute the Earth. It is the same as brand new nylon and can be infinitely recycled, recreated and remoulded. ECONYL® is Cradle-to-Cradle certified and therefore our fibres are eligible for LEED® v4 points, as part of the LEED green building rating system.

## PUREBASE®

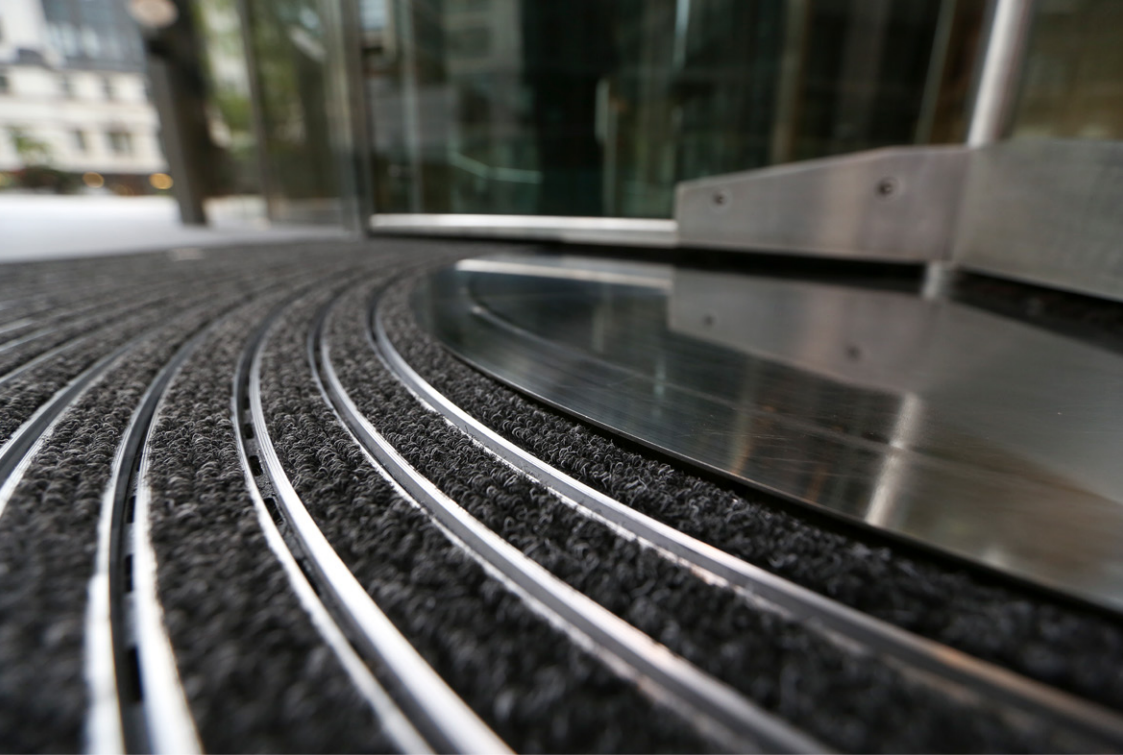
### Benefits of specifying PureBase backing

PureBase is a new, PVC-free backing material for entrance matting. It has a significantly lower environmental impact in terms of production processing, greenhouse gas emissions and end of life waste disposal. PureBase is 20% lighter and 3 x more flexible for easier handling and installation.













CPD  
PROVIDER

Find us on:



NBS

bimstore



INTRA.  
SYSTEMS

6 COBHAM ROAD, WIMBORNE, DORSET, BH21 7PE

01425 472000 [INTRASYSTEMS.CO.UK](http://INTRASYSTEMS.CO.UK)

INTRAFLEX® RADIAL V1.0