

**WICONA®**

By  Hydro



Performance Slider

» WICSLIDE 150 PS

ALUMINIUM OFFSET SLIDING SYSTEM

# » WICSLIDE 150 PS







## Developed for vertical living spaces

Increasing urbanisation poses huge challenges for the cities of the future. By 2050, over 70% of the world's population will be living in cities. This inevitably leads to higher land prices and higher noise pollution. The result of this development is a process of verticalisation in urban planning with combinations of residential and office buildings, restaurants and leisure facilities. The increasing height of high-rise buildings demands innovative solutions for a new level of comfort in light and quiet living spaces. The large-dimensioned WICSLIDE 150 PS offset sliding system emphasises the scope of the inner space and opens it up further onto the terrace. The generously-sized glazing with excellent sound insulation ensures the best possible quality of life indoors.

## Innovative system

Besides growing urbanisation, climate change with all its negative side effects continues to develop, and increasingly impacts on buildings as well. WICSLIDE 150 PS is a hybrid solution because it combines the advantages of a sliding door with the features of a window. The patented central sealing system guarantees optimum watertightness – up to four times greater than standard sliding doors. Thanks to excellent thermal insulation and watertightness, the WICSLIDE 150 PS offset sliding system is the innovative solution to meet the challenges of climate change.

## Ingenious design

WICONA attach particular importance to the design of the WICSLIDE 150 PS panels. Clear, slim lines combined with concealed fittings create a balanced aesthetic overall look. Specifically developed for a high level of comfort with the secure micro-ventilation system, WICSLIDE 150 PS offers an innovative solution and ensures smooth low-noise operation. The profiles have been extruded from Hydro CIRCAL 75R aluminium – a top quality aluminium alloy composed of at least 75% recycled end-of-life aluminium (post-consumer scrap).



**Modern design**



**Outstanding tightness**



**Excellent sound insulation**



**Maximum comfort**

# » Modern design and innovative technology



## The benefits of a hybrid solution

The WICSLIDE 150 PS offset sliding system combines the benefits of a

- WICSLIDE sliding system
  - Large glazed areas
  - Low space requirement inside
  - Barrier-free threshold

with the benefits of a

- WICLINE window system
  - Excellent sound insulation
  - Outstanding tightness
  - Secure ventilation
  - Individual safety and security solutions



## Innovations

- Operation: Opens with a 6 mm offset inwards, then the sliding sash runs parallel to the fixed light without contact with the gaskets.
- Hybrid system with perimetral multi-locking and patented sealing system ensures outstanding watertightness.

## Large dimensions

- Panel dimensions up to w x h: 6,000 x 2,700 mm
- Weight: up to 300 kg per sash
- Glass thickness: up to 52 mm

## Ease of use and accessibility

- Micro-ventilation:
  - With the handle at 90°, the sliding sash is in its ventilation position with a 6 mm offset, but is still securely locked.
- Barrier-free threshold: 15 mm height

## Design

- Visible or concealed sashes
- Concealed fittings
- Concealed drainage option

## Software

- Integrated in
  - WICTOP
  - WIC3D
  - WICACOUSTIC



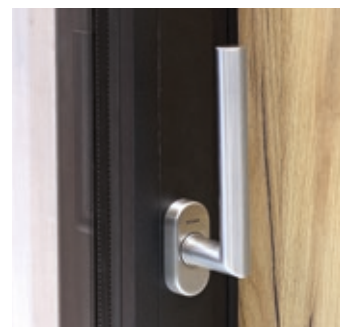
Innovative hardware components produce 6 mm offset



Locked position (0°)



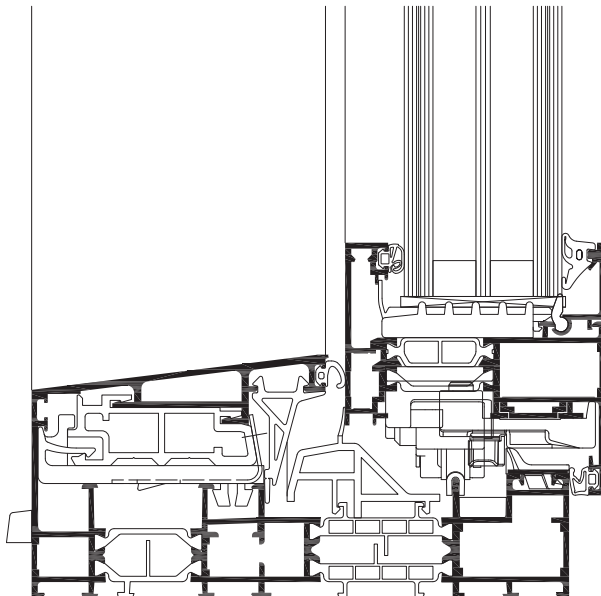
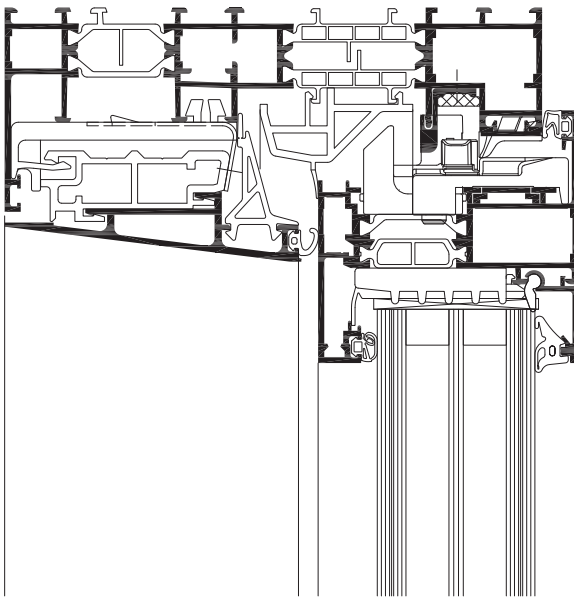
Micro-ventilation (90°)  
Sash still locked



Sliding position (180°)







#### Technical performance:

- Thermal insulation:
  - $U_w$  up to: 1.0 W/m<sup>2</sup>K ( $U_g = 0.7$  W/m<sup>2</sup>K),
  - 1 sliding sash + fixed light, triple glazing
  - w x h = 4,000 x 2,700 mm
- Tightness:
  - Air permeability: Up to class A4
  - Micro-ventilation: Class A1
  - Watertightness: Up to E1200
- Resistance to wind load: Up to class 3
- Operating load up to 1,200 Pa, Safety load up to 1,800 Pa, Class 5 up to 3,000 Pa (expected mid 2023)
- Sound insulation:
  - $R_w$  (C;C<sub>tr</sub>) up to 45 (-2;-5) dB
  - Double glazing 50 mm: 88.2 Si / 20 / 66.2 Si
- Operating forces: Up to class 1
- Burglar resistance up to RC 2 (expected mid 2023)

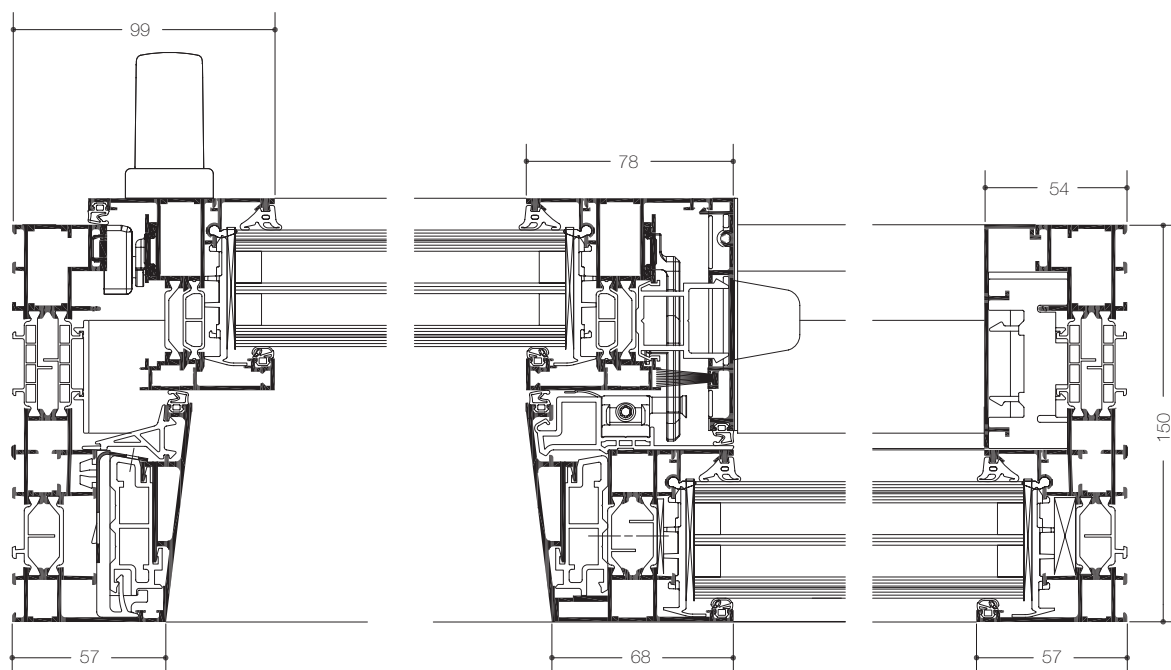
- Extruded aluminium profiles in Hydro CIRCAL 75R



#### System tests / CE product pass in accordance with EN 14351-1:2006+A2:2016

Thermal insulation $U_w$	Up to 1.0 W/(m <sup>2</sup> K)
Air permeability:	Up to class A4
Watertightness:	Up to E1200
Resistance to wind load:	Up to class 3
Sound insulation:	$R_w$ up to 45 (-2;-5) dB
Operating forces:	Up to class 1
Mechanical strength:	Up to class 4
Durability:	Up to class 3 (20,000 cycles)
Impact resistance:	Up to class 2

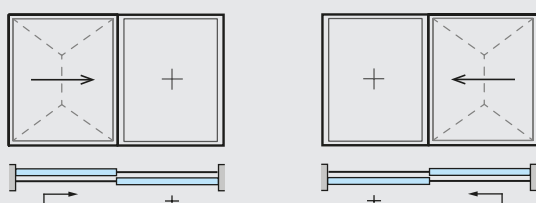
# Technical details



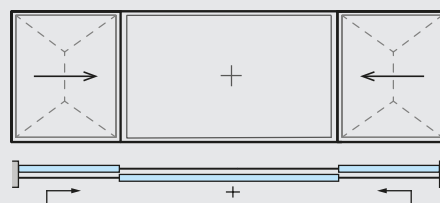
Horizontal section  
1 sliding sash + fixed light

## Types of opening

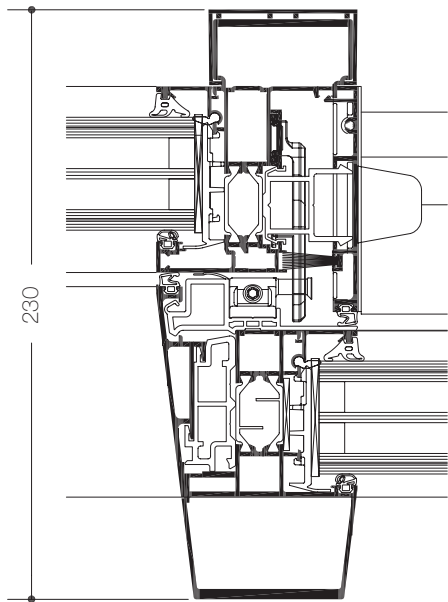
1 sliding sash + 1 fixed light



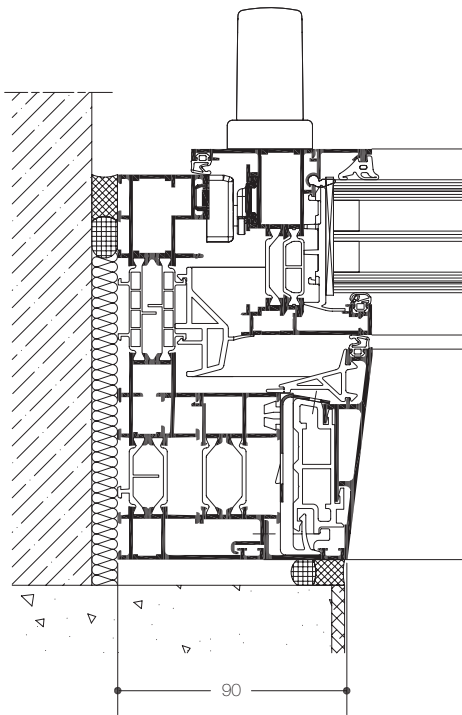
2 sliding sashes + 1 fixed light



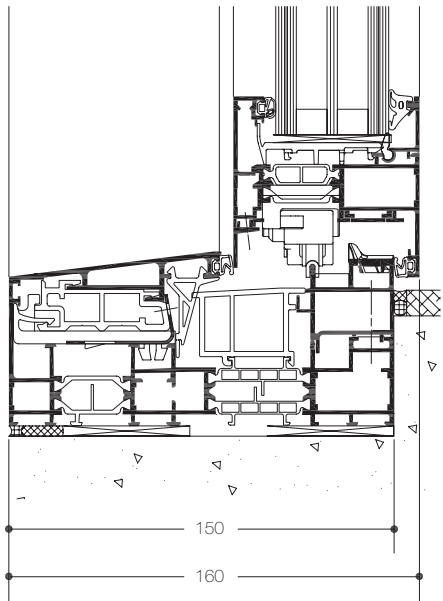




Central mullion  
reinforced version



Horizontal section – concealed sash



Vertical section – opening sash, embedded threshold

# » Materials and sustainability



Following the tradition of all WICONA systems, only the best materials and accessories are used to ensure the least possible maintenance expenditure and greatest possible durability.

- Extruded aluminium profiles in Hydro CIRCAL 75R in accordance with EN 12020, EN 573-3, EN 515 and EN 775-1 - 9
- Fittings in die-cast zinc in accordance with EN 12844
- All gaskets EPDM or TPE (thermoplastic elastomer)
- Thermal break made of PA66-GF25 and ABS
- Stainless steel screws

## Surfaces and colours

Whether anodised or powder-coated – almost all optical requirements can be met thanks to the exclusive shades of WICONA's extensive colour range. Exclusive shades and coatings with antibacterial, antiviral, high scratch resistance and heat reflecting properties mean that architects and designers/planners have more design freedom to bring out the individual look of the building.





## Join a revolution

Building with vision means taking the future seriously. And bearing in mind that our resources are finite. We are absolutely convinced that future urban development is inconceivable without sustainable reuse of materials.

### Hydro CIRCAL

WICONA is a part of the Hydro group, a global supplier of aluminium with activities throughout the value chain – aiming to become carbon neutral from a lifecycle perspective by 2020. WICONA is once again demonstrating its focus on sustainability by using Hydro aluminium alloy CIRCAL made with recycled post-consumer scrap. Hydro CIRCAL 75R contains a minimum of 75% postconsumer scrap. When guaranteeing more than 75% recycled content, Hydro exclusively refer to aluminium that has reached its end of life as a product in use and is brought back into the loop.

### 100 % Opportunities. 5 % Energy.

Aluminium is infinitely recyclable. Its quality and material properties are never lost. Furthermore, melting down end-of-life aluminium uses just 5 % of the energy required for primary aluminium production. So the higher recycled content of post-consumer scrap, the better it is for our cities and the environment.

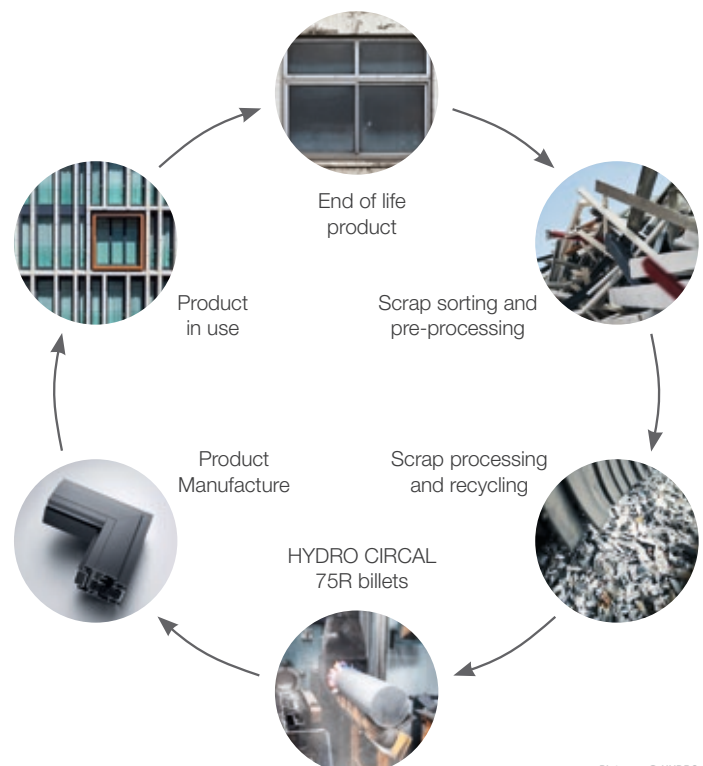
### Minimum CO<sub>2</sub> footprint

Hydro CIRCAL 75R has a carbon footprint among the lowest in the world: 2.3 kg CO<sub>2</sub> per kilo of aluminium. This is 77 % less than the worldwide average for primary extraction.

## About 75% of all aluminium ever produced is still in use today

### The Process

The production process is fully traceable, and the product is certified by an independent third party (DNV-GL). The certified production is nothing short of a revolution in the building industry.



Pictures: © HYDRO



## Austria

5201 Seekirchen  
☎ +43 6212 2000  
✉ info@wicona.at

## Benelux

3400 Landen  
☎ +32 11 690316  
✉ info@wicona.be  
✉ info@wicona.nl

## Croatia

10010 Zagreb  
☎ +385 01 2048 217  
✉ info@wicona.de

## Czech Republic

619 00 Brno  
☎ +420 602 745 407  
✉ wicona@wicona.cz

## Denmark

8240 Risskov  
☎ +45 7020 2048  
✉ wicona@wicona.dk

## España

08195 Sant Cugat del Vallès  
Barcelona  
☎ +34 93 573 77 76  
✉ wicona.es@wicona.com

## Estonia / Latvia

75312 Rae vald Harjumaa  
☎ +372 657 66 35  
✉ info@wicona.ee

## France

02200 Courmelles  
☎ +33 3 23598200  
✉ info@wicona.fr

## Germany

89077 Ulm  
☎ +49 731 3984-0  
✉ info@wicona.de

## Hungary

1031 Budapest  
☎ +36 (1) 4533457  
✉ info@wicona.hu

## Ireland

Dublin D22 X286  
☎ +353 1 4105766  
✉ info@wicona.ie

## Italia

20063 Cernusco sul Naviglio MI  
☎ +39 02 924291  
✉ info@wicona.it

## Kosovo-Albania

Prishtina 10000, Kosovo  
☎ +38 349 28 02 22  
✉ info@wicona.de

## Lithuania / Latvia

02244 Vilnius  
☎ +370 5 2102587  
✉ info@wicona.lt

## Norway

2007 Kjeller  
☎ +47 22 42 22 00  
✉ wicona@wicona.no

## Poland

93-428 Łódź  
☎ +48 42 683 63 73  
✉ info@wicona.pl

## Romania

032332 Bucharest  
☎ +40 724 743 070  
✉ info@wicona.de

## Serbia

11070 Beograd  
☎ +381 11 312 18 35  
✉ info@wicona.de

## Slovakia

82105 Bratislava  
☎ +421 918 725 098  
✉ info@wicona.sk

## Slovenia

2201 Zg. Kungota  
☎ +386 2 620 99 70  
✉ info@wicona.de

## Sweden

574 81 Vetlanda  
☎ +46 470 78 74 00  
✉ wicona@wicona.se

## Switzerland

5506 Mägenwil  
☎ +41 62 887 41 41  
✉ info@wicona.ch

## United Kingdom

Tewkesbury, GL20 8SF  
☎ +44 1684 853500  
✉ info.wiconauk@wicona.com

## China

Beijing 100005, P.R.C  
☎ +86 10 6059 5686 ext. 805  
✉ contact.wicona.international@wicona.com

## Singapore

608831 Singapore  
☎ +65 6513 2126  
✉ contact.wicona.international@wicona.com

## United Arab Emirates

Dubai  
☎ +971 4 887 00 96  
✉ contact.wicona.international@wicona.com

## United States of America

☎ 1+(516) 519-4635  
✉ info.na@wicona.com

## Other countries

31037 Toulouse  
☎ +33 5 61312626  
✉ contact.wicona.international@wicona.com