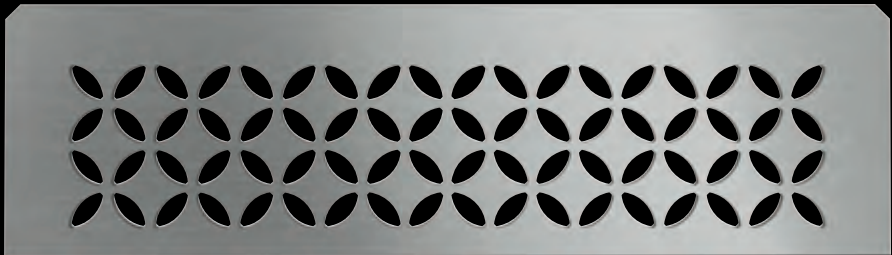


Schlüter®-SHELF-N-S1
FLORAL

87 x 300 mm

Brushed stainless steel
SN S1 D5 EB



Textured finished aluminium
Ivory SN S1 D5 TSI



Textured finished aluminium
Stone grey SN S1 D5 TSSG

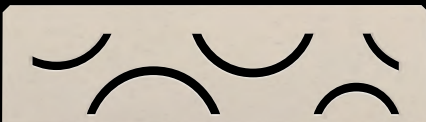


Textured finished aluminium
Dark graphite SN S1 D5 TSDA

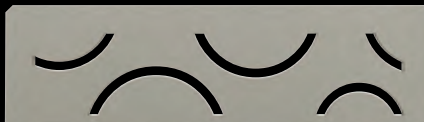
Schlüter®-SHELF-N-S1
CURVE

87 x 300 mm

Brushed stainless steel
SN S1 D6 EB



Textured finished aluminium
Ivory SN S1 D6 TSI



Textured finished aluminium
Stone grey SN S1 D6 TSSG



Textured finished aluminium
Dark graphite SN S1 D6 TSDA



Schlüter-Systems KG • Schmölestraße 7 • D-58640 Iserlohn
Tel.: +49 2371 971-261 • Fax: +49 2371 971-112 • info@schlueter.de • www.schlueter-systems.com
Schlüter-Systems Ltd • Units 3-5 Bardon 22 Industrial Estate • Beveridge Lane • Coalville • Leicestershire • LE67 1TE
Tel.: +44 1530 813396 • Fax: +44 1530 813376 • sales@schluter.co.uk • www.schluter.co.uk

Art-No. 556338 – edition 10/18



DESIGNER STORAGE
Schlüter®-SHELF

Attractive, stable and quick
to install: Schlüter®-SHELF

Schlüter®-SHELF is a stylish addition to showers, bathrooms and much more. The shelf in elegant STYLE design offers a practical storage solution whatever tiles are to be installed or already exist.

- Brushed stainless steel or aluminium with TRENDLINE coating
- Designs: FLORAL and CURVE
- Available in five different formats

Schlüter®-SHELF-N

Schlüter®-SHELF-N are rectangular shelves for use in pre-fabricated Schlüter®-KERDI-BOARD-N niches. They are precisely fitted as a shelf in Schlüter®-KERDI-BOARD-N niches during tile installation.

Schlüter®-SHELF-E

Schlüter®-SHELF-E are shelves in three different shapes for installation in corners. The shelves can be integrated into the tile assembly during installation or retrofitted into the joints of tiled walls, using the 2 mm attachment wings. Schlüter®-SHELF-E are suitable as shelves in shower areas, but can also be integrated into other tiled areas, e.g. into tiled kitchens.

Schlüter®-SHELF-W

Schlüter®-SHELF-W are rectangular shelves for wall surfaces. Their trapezoid perforated anchoring legs are integrated into the tile assembly during tile installation. They are suitable as shelves in shower areas, but can also be integrated into other tiled areas, e.g. into tiled kitchens.

Schlüter®-SHELF-N-S1
CURVE | brushed stainless steel

Schlüter®-SHELF-E-S1
FLORAL | textured finished aluminium | stone grey

Schlüter®-SHELF-E-S2
CURVE | brushed stainless steel

Schlüter®-SHELF-E-S3
FLORAL | textured finished aluminium | ivory

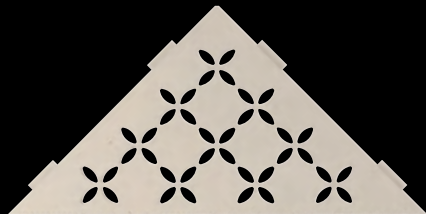
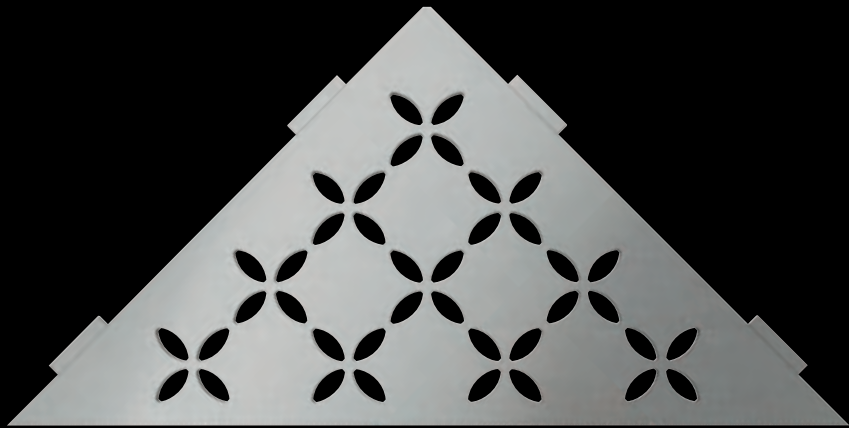
Schlüter®-SHELF-W-S1
CURVE | textured finished aluminium | dark graphite

Schlüter®-SHELF-E-S1

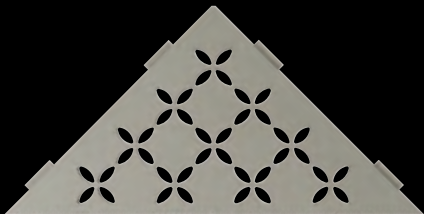
FLORAL

210 x 210 mm

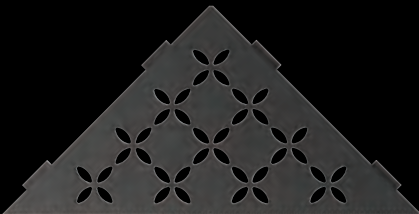
Brushed stainless steel
SE S1 D5 EB



Textured finished aluminium
Ivory SE S1 D5 TSI



Textured finished aluminium
Stone grey SE S1 D5 TSSG



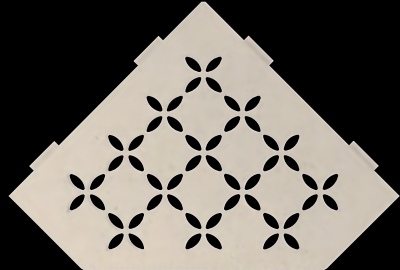
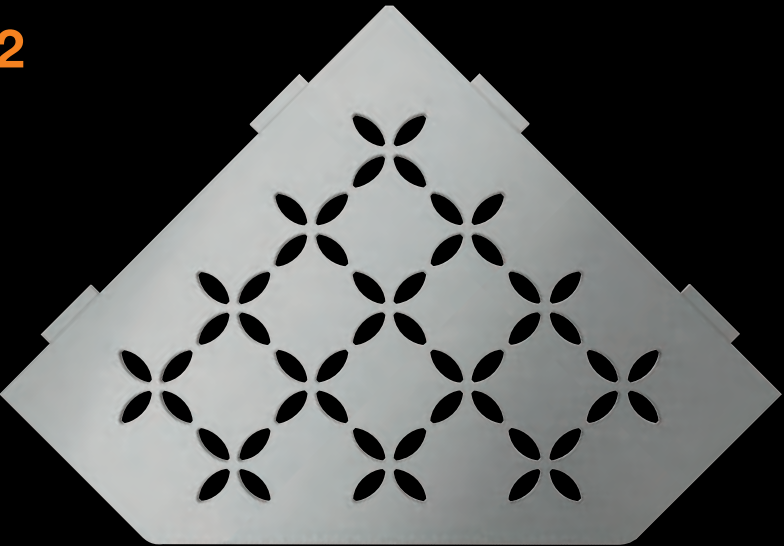
Textured finished aluminium
Dark graphite SE S1 D5 TSDA

Schlüter®-SHELF-E-S2

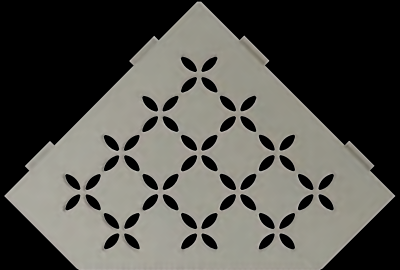
FLORAL

75 x 195 x 195 x 75 mm

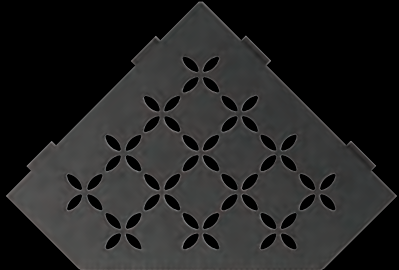
Brushed stainless steel
SE S2 D5 EB



Textured finished aluminium
Ivory SE S2 D5 TSI



Textured finished aluminium
Stone grey SE S2 D5 TSSG



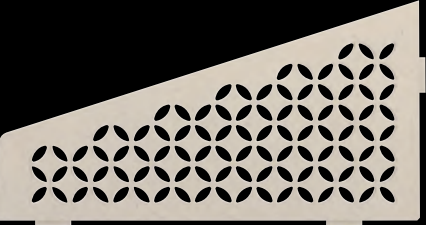
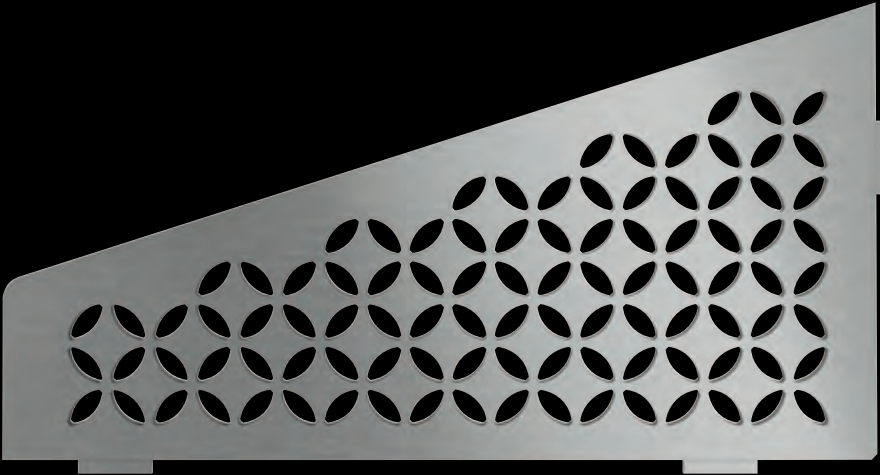
Textured finished aluminium
Dark graphite SE S2 D5 TSDA

Schlüter®-SHELF-E-S3

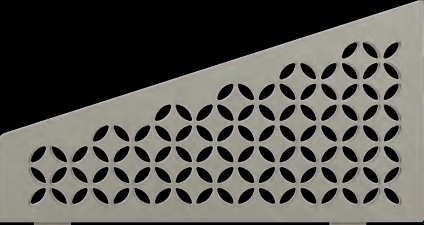
FLORAL

62 x 295 x 154 mm

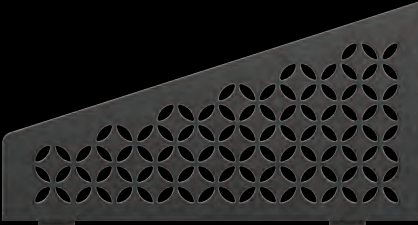
Brushed stainless steel
SE S3 D5 EB



Textured finished aluminium
Ivory SE S3 D5 TSI



Textured finished aluminium
Stone grey SE S3 D5 TSSG



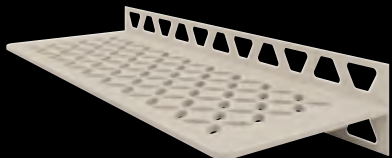
Textured finished aluminium
Dark graphite SE S3 D5 TSDA

Schlüter®-SHELF-W-S1

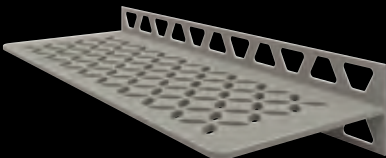
FLORAL

115 x 300 mm

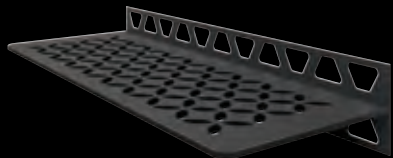
Brushed stainless steel
SW S1 D5 EB



Textured finished aluminium
Ivory SW S1 D5 TSI



Textured finished aluminium
Stone grey SW S1 D5 TSSG



Textured finished aluminium
Dark graphite SW S1 D5 TSDA

Schlüter®-SHELF-E-S1

CURVE

210 x 210 mm

Brushed stainless steel
SE S1 D6 EB



Textured finished aluminium
Ivory SE S1 D6 TSI



Textured finished aluminium
Stone grey SE S1 D6 TSSG



Textured finished aluminium
Dark graphite SE S1 D6 TSDA

Schlüter®-SHELF-E-S2

CURVE

75 x 195 x 195 x 75 mm

Brushed stainless steel
SE S2 D6 EB



Textured finished aluminium
Ivory SE S2 D6 TSI



Textured finished aluminium
Stone grey SE S2 D6 TSSG



Textured finished aluminium
Dark graphite SE S2 D6 TSDA

Schlüter®-SHELF-E-S3

CURVE

62 x 295 x 154 mm

Brushed stainless steel
SE S3 D6 EB



Textured finished aluminium
Ivory SE S3 D6 TSI



Textured finished aluminium
Stone grey SE S3 D6 TSSG



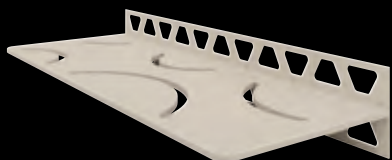
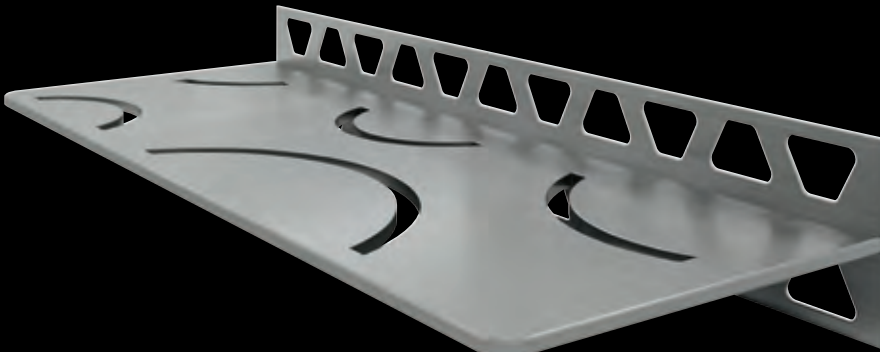
Textured finished aluminium
Dark graphite SE S3 D6 TSDA

Schlüter®-SHELF-W-S1

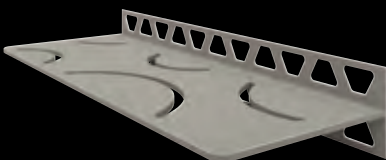
CURVE

115 x 300 mm

Brushed stainless steel
SW S1 D6 EB



Textured finished aluminium
Ivory SW S1 D6 TSI



Textured finished aluminium
Stone grey SW S1 D6 TSSG



Textured finished aluminium
Dark graphite SW S1 D6 TSDA