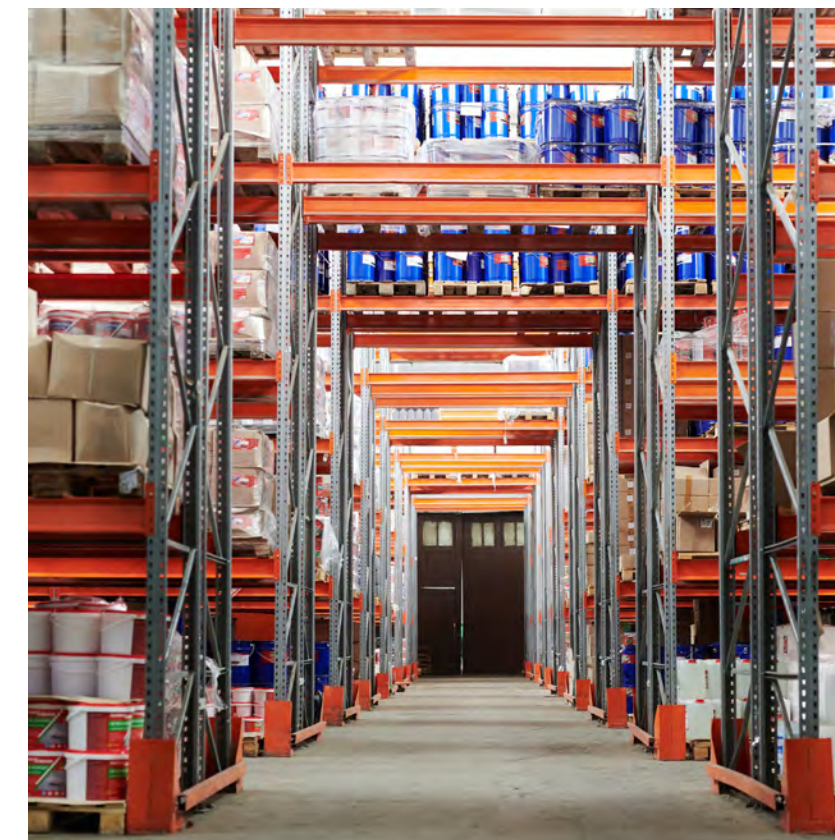


# Distributor Information Guide







### Kentec Information:

Protection of people, building and assets from a fire is a paramount concern to any organisation. Keeping a site safe is not the only priority but with the risk of physical damage and financial loss resulting from a fire, there is also the risk to operational performance and reputation, so a reliable and responsive fire system that can respond rapidly to any situation is required.

Early warning fire systems and detection technology can detect a fire, and in the case of extinguishant detection, it can also automatically release a fire suppression agent to eliminate fire within seconds. Stopping a fire within the first few moments can reduce or avoid damage to equipment and assets and subsequent loss of operational productivity.

### A global supplier

Kentec Electronics is one of the world's leading life safety solutions manufacturers of conventional, analogue addressable fire detection and extinguishant control panels.

Founded in 1985, Kentec is an end-to-end manufacturer, with everything sold made in the UK. It employs approximately 240 members of staff in its production facility, head office and research and development department.

### High quality products and on time delivery

In addition to design and manufacture, Kentec provides technical support specified to the local standards and customer requirements of over 90 countries worldwide. With a commitment to meeting the needs of individual national markets, Kentec has achieved a global reputation, resulting in its life safety systems being installed in numerous prestigious sites across the world.

Kentec manufactures products approved to EN54, EN12094, UL, FM, VdS, NFPA and marine classification societies.

### High quality products and on time delivery

A global network of specialists, experts, and trained fire alarm distribution companies, recognised for their high levels of Kentec product knowledge and providing a full range of Kentec products to suit all applications and building types.

This exclusive network has been carefully selected to ensure installers and end-users receive the goods they need, by holding stock locally to enable the fast delivery and supply of Kentec products.

All distributors have been trained by Kentec on our products to provide local sales, technical and application support, so that they can offer their customers the best experience in fire panel selection based on the project requirements.



# Products in action

Click on the products for more information 



# Conventional Panel Sigma CP Standard 4 Wire

## Overview

Easy to install, the Sigma CP is available with two, four or eight detection zones in standard or installation saving, 'two-wire' versions.

- The extensive range of configuration features available ensure suitability for new installations or panel replacements on older systems.
- Configuration options are stored in non-volatile memory and are easily accessed via an intuitive user interface, which enables the configuration data to be viewed and changed efficiently.
- Sigma CP control panels are compatible with most standard, conventional detectors, call points and sounders and are also compatible with 'two wire' detector bases from Apollo and Hochiki.
- Compatible for use on BS5839: Part 1: 2017 installations
- Fully certified to BS EN54-2 and BS EN54-4



[Click here to Download:](#)

## Part Numbers and Product Descriptions



### Sigma CP Conventional Fire Control Panels

*A range of cost effective EN54-2 & EN54-4 approved conventional fire alarm control panels for small applications*

<b>K11020M2</b>	Sigma CP - 2 Zone conventional fire alarm control panel
<b>K11040M2</b>	Sigma CP - 4 Zone conventional fire alarm control panel
<b>K11080M2</b>	Sigma CP - 8 Zone conventional fire alarm control panel
<b>KL11020M2</b>	Sigma CP - 2 Zone conventional fire alarm control panel c/w LCMU
<b>KL11040M2</b>	Sigma CP - 4 Zone conventional fire alarm control panel c/w LCMU
<b>KL11080M2</b>	Sigma CP - 8 Zone conventional fire alarm control panel c/w LCMU
<b>T11020M2</b>	Sigma CP Two Wire Panel - 2 Zones
<b>T11040M2</b>	Sigma CP Two Wire Panel - 4 Zones
<b>T11080M2</b>	Sigma CP Two Wire Panel - 8 Zones
<b>KA11020M2</b>	Sigma CP-A Alarmsense Conventional Panel - 2 Zones
<b>KA11040M2</b>	Sigma CP-A Alarmsense Conventional Panel - 4 zones
<b>KA11080M2</b>	Sigma CP-A Alarmsense Conventional Panel - 8 Zones



### Sigma CP-R conventional fire alarm repeater panels

*A range of cost effective repeater panels compatible with all Sigma CP conventional fire alarm panels*

<b>E01020L2</b>	Sigma CP-R Low Profile 2 Zone Conventional Repeater Panel no PSU
<b>E01040L2</b>	Sigma CP-R Low Profile 4 Zone Conventional Repeater Panel no PSU
<b>E01080L2</b>	Sigma CP-R Low Profile 8 Zone Conventional Repeater Panel no PSU
<b>K01020M2</b>	Sigma CP-R 2 Zone Conventional Repeater Panel c/w PSU
<b>K01040M2</b>	Sigma CP-R 4 Zone Conventional Repeater Panel c/w PSU
<b>K01080M2</b>	Sigma CP-R 8 Zone Conventional Repeater Panel c/w PSU



### Sigma CP expansion boards

*A range of option cards used to expand the capabilities of the Sigma CP Fire Control Panels*

<b>K461</b>	Sigma CP Sounder PCB
<b>K04000M2</b>	Sigma CP Sounder PCB boxed
<b>K04400M2</b>	Sigma CP Sounder PCB boxed with PSU
<b>K577</b>	2 Way Sounder Extender Module with Interface (For use with existing panels)
<b>K580</b>	Sigma CP Ancillary PCB
<b>K02000M2</b>	Sigma CP Ancillary PCB boxed
<b>K02750M2</b>	Sigma CP Ancillary PCB boxed c/w PSU



### Sigma CP installation accessories

*A range of accessories to enhance Sigma CP fire alarm systems*

<b>K18002</b>	Vision Window cover assembly (M2 size)
<b>M2FCLGT</b>	Semi-Flushing collar M2
<b>K14060</b>	LCMU Line Continuity Monitoring Unit



### Vizulinx Alarm Management gateway

*A multi-purpose interface module which facilitates remote alarm management by sending status messages through e-mail or text messaging. Supports Ethernet or USB GSM connectivity to internet. Vizulinx also provides interfacing to third party equipment by use of GPIO (General Purpose Inputs/Outputs) and Modbus*

<b>K85000M2</b>	Vizulinx Gateway Unit
<b>K85000</b>	Vizulinx Gateway Module (Unboxed)
<b>K85001BLU</b>	BMS license upgrade
<b>K85001BAC</b>	BACNet license upgrade

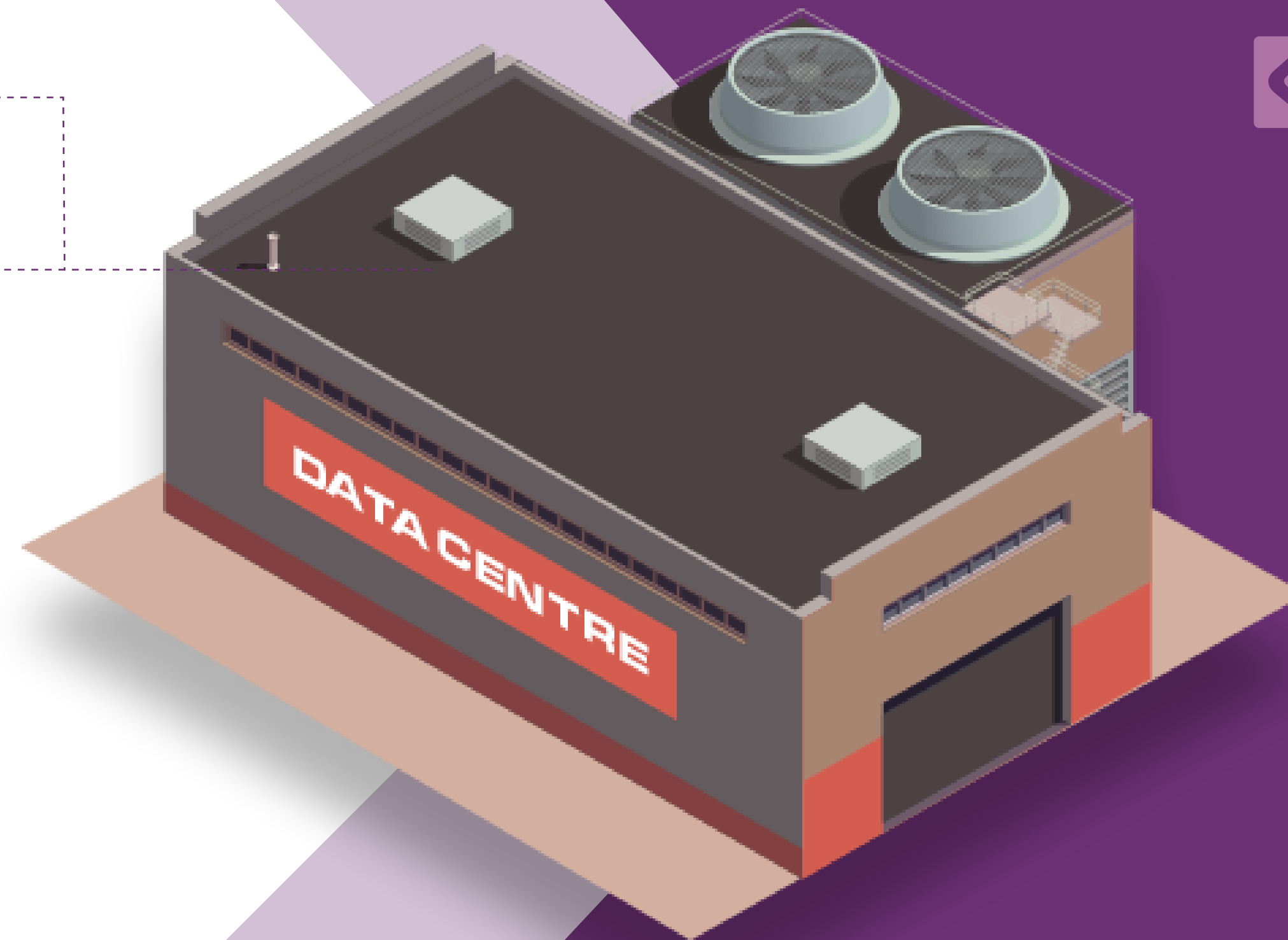


# Extinguishant Releasing Panel Sigma XT

## Overview

The Sigma XT extinguishant releasing panel, installed extensively in thousands of premises globally, offers outstanding value and performance for all small to medium fixed firefighting installations.

- > Any single zone or any combinations of zones can be configured to release
- > Configurable detection delays
- > Compatible with I.S. barriers
- > Countdown timer shows time remaining until release
- > Configurable first stage sounder delays
- > Zero-time delay upon manual release option
- > Non-latching zone input to receive signals from other systems such as aspirating equipment
- > Supports up to seven, four-wire status indicators
- > Approved and certified to EN12094-1, EN54-2 and EN54-4



[Click here to Download:](#)

## EXTINGUISHING CONTROL SYSTEMS (EN) Part Numbers and Product Descriptions



### Conventional Extinguishing control panels

#### Sigma XT - 3 Zone Single Area Extinguishant Control Panel

An EN12094-1, EN54-2 and EN54-4 approved single area extinguishing control panel for control of gaseous suppression systems

**K11031M2** Sigma XT Extinguishant Control Panel



### Sigma Expansion PCB's

A range of option cards used to expand the capabilities of the Sigma extinguishing Control Panels

**K588** Sigma XT Ancillary PCB

**K03000M2** Sigma XT Ancillary PCB boxed

**K03750M2** Sigma XT Ancillary PCB boxed c/w PSU



### Extinguishing System Accessories

#### Sigma SI status Indicators

A range of remote status indicator repeater units compatible with all Sigma extinguishing control panels

**K911000M8** Sigma Si - 6 LED Extinguishant Status Unit

**K911010M8** Sigma Si - 6 LED Extinguishant Status Unit c/w Manual release

**K911100M8** Sigma Si - 6 LED Extinguishant Status Unit c/w Mode Select keyswitch

**K911110M8** Sigma Si - 6 LED Extinguishant Status Unit c/w Manual Release & Mode Select keyswitch

**K911113M8** Sigma Si - 10 LED Extinguishant Status Unit c/w Manual Release & Mode Select keyswitch

**W911000W8** Sigma Si - 6 LED weatherproof Extinguishant Status Unit

**W911100W8** Sigma Si - 6 LED weatherproof Extinguishant Status Unit c/w Mode Select keyswitch

**W911110W8** Sigma Si - 6 LED weatherproof Extinguishant Status Unit c/w Manual Release & Mode Select keyswitch

**W911113W8** Sigma Si - 10 LED weatherproof Extinguishant Status Unit c/w Manual Release & Mode Select keyswitch



### Fire-Cryer Extinguishing Voice Sounder

Conventional electronic voice sounders compatible with Sigma XT, XT+ & Syncro XT+ extinguishing systems, EN54-3 approved

**KFC3-KEK** Fire-Cryer extinguishing voice sounder kit

**KFC3-ARRD** Fire-Cryer extinguishing voice sounder with visual indicator

**KFC3-EP2** Extinguishing Controller PCB



### Sigma/Syncro Extinguishing buttons/switches

A range of control buttons compatible with Kentec extinguishing systems

**K91000M10** Sigma Si Extinguishant Hold unit - Green button

**KB91000M10** Sigma Si Extinguishant Hold unit - Red button

**K13470M10** Extinguishant Abort Unit

**K13520M10** Extinguishant Extract Key

**K13480M10** Main/Reserve Duty Extinguishant Keyswitch Unit



### Vizulinx Alarm Management gateway

A multi-purpose interface module which facilitates remote alarm management by sending status messages through e-mail or text messaging. Supports Ethernet or USB GSM connectivity to internet. Vizulinx also provides interfacing to third party equipment by use of GPIO (General Purpose Inputs/Outputs) and Modbus

**K85000M2** Vizulinx Gateway Unit

**K85000** Vizulinx Gateway Module (Unboxed)

**K85001BLU** BMS license upgrade

**K85001BAC** BACNet license upgrade

# Evacuation Alert Panel from Special Applications EVAC-POINT

## Overview

The Sigma XT extinguishant releasing panel, installed extensively in thousands of premises globally, offers outstanding value and performance for all small to medium fixed firefighting installations.

- Evacuate all or part of a building in an emergency
- Designed based on the functional requirements of BS8629:2019
- Incorporated LED control panel illumination – SAVE MONEY ON ADDITIONAL LIGHTING INSTALLATION - ONLY AVAILABLE WITH KENTEC
- 2 loop and 4 loop versions available
- Versions compatible with Hochiki, Apollo, Argus & EMS protocols
- On-board power supply with space for standby batteries
- Based on reliable EN54-2/EN54-4 approved Syncro AS architecture
- Secure and robust steel enclosure with lockable cover\*
- Easy to operate toggle switches
- LED status indicators
- User defined zone reference labelling
- Anti-tamper alert
- Simple to commission, customise and modify on-site



[Click here to Download:](#)

## EVACUATION ALERT PANEL (EN) Part Numbers and Product Descriptions



### EVAC-POINT - 2 and 4 loop Analogue Addressable Control Panels

*A range of EN54-2 & EN54-4 approved loop fully networkable addressable control panels*

- SPEC-EPM** Mini, 2 loop, 5.25A PSU – 5-15 areas / floors (up to 3 modules)
- SPEC-EPS** Standard Panel, 3 or 4 loop, 10.25A PSU – 5 to 60 areas / floors (up to 12 modules)
- SPEC-EPX** 1-5 areas / floors



### Vizulinx Alarm Management gateway

*A multi-purpose interface module which facilitates remote alarm management by sending status messages through e-mail or text messaging. Supports Ethernet or USB GSM connectivity to internet. Vizulinx also provides interfacing to third party equipment by use of GPIO (General Purpose Inputs/Outputs) and Modbus*

- K85000M2** Vizulinx Gateway Unit
- K85000** Vizulinx Gateway Module(Unboxed)
- K85001BLU** BMS license upgrade
- K85001BAC** BACNet license upgrade



# Analogue Fire Detection Syncro AS

## Overview

Syncro AS is an analogue addressable fire control panel, available in either one or two detection loops. It combines compact and practical styling with the programming power and connectivity normally associated with much larger systems.

- > Network up to 64 panels
- > Up to 512 additional programmable I/O via Syncro I/O modules
- > Multi-Protocol panel – Hochiki, Apollo, Argus Vega ESP protocol
- > Ideal for small and medium sites that require advanced fire sensing and evacuation options
- > Powerful, network wide cause and effect
- > Compatible with View repeaters
- > Approved and certified to EN54-2 / EN54-4



[Click here to Download:](#)

## SYNCRO AS ADDRESSABLE FIRE ALARM CONTROL PANELS (EN) Part Numbers and Product Descriptions



### Syncro AS Single loop Analogue Addressable Control Panels

A range of EN54-2 & EN54-4 approved single loop fully networkable addressable control panels, expandable to two loops with addition of loop 2 extension card

- H81161M2** Syncro AS single loop - Hochiki Protocol
- H80161M2** Syncro AS single loop - Hochiki Protocol c/w enable keyswitch
- A81161M2** Syncro AS single loop - Apollo Protocol
- A80161M2** Syncro AS single loop - Apollo Protocol c/w enable keyswitch
- V81161M2** Syncro AS single loop - Argus Vega Protocol
- V80161M2** Syncro AS single loop - Argus Vega Protocol c/w enable keyswitch



### Syncro AS Two loop Analogue Addressable Control Panels

A range of EN54-2 & EN54-4 single loop fully networkable addressable control panels, expandable to two loops with addition of loop 2 extension card

- H81162M2** Syncro AS Two loop - Hochiki Protocol
- H80162M2** Syncro AS Two loop - Hochiki Protocol c/w enable keyswitch
- A81162M2** Syncro AS Two loop - Apollo Protocol
- A80162M2** Syncro AS Two loop - Apollo Protocol c/w enable keyswitch
- V81162M2** Syncro AS Two loop - Argus Vega Protocol
- V80162M2** Syncro AS Two loop - Argus Vega Protocol c/w enable keyswitch



### Syncro View repeater

A range of LCD repeater panel extending the controls and indications of the Syncro AS fire alarm control panel to other locations

- K67000M1** Syncro View Local LCD Repeater Panel no PSU
- K67001M1** Syncro View Local LCD Repeater Panel: c/w enable keyswitch
- K67750M1** Syncro View Local LCD Repeater Panel: c/w PSU
- K67751M1** Syncro View Local LCD Repeater Panel: c/w enable keyswitch & PSU



### Syncro AS Installation accessories

A wide range of accessory products that can be used to enhance Syncro fire alarm systems

- X187LS** Software Download Lead Economy
- S187** Software Download Lead Standard Compatible with Syncro anels only **Important! Do not use on Solo panels as this will damage the panel**
- U187** USB to RS232 Serial Converter
- K768P2** Printer Module enclosure
- M1FCLGT** Semi-Flushing collar M1
- M2FCLGT** Semi-Flushing collar M2
- K18002** Vision window cover assembly (M2 size)



### Syncro AS option cards

A range of option cards used to expand the capabilities of the Syncro AS Fire Contro Panel

- K586H** Syncro AS Loop 2 Extension Card: Hochiki Protocol
- K586A** Syncro AS Loop 2 Extension Card: Apollo Protocol
- K586V** Syncro AS Loop 2 Extension Card: Argus Vega Protocol
- K555** Syncro Fault Tolerant Network Card
- K560** Syncro I/O - 16 Channel I/O board
- K547** Syncro I/O - 8 Way Relay Extender Board
- K546** Syncro I/O - 6 Way Sounder Extender Board
- K545** Syncro I/O - 4 Way Conventional Detection Zone Module
- K16001M2** Syncro I/O Expansion Card Enclosure - no power supply
- K16750M2\*** Syncro I/O Expansion Card Enclosure with 750mA power supply\*
- K16250M2** Syncro I/O Expansion Card Enclosure with 2.5A power supply
- K16400M2** Syncro I/O Expansion Card Enclosure with 5.25A power supply



### Vizulinx Alarm Management gateway

A multi-purpose interface module which facilitates remote alarm management by sending status messages through e-mail or text messaging. Supports Ethernet or USB GSM connectivity to internet. Vizulinx also provides interfacing to third party equipment by use of GPIO (General Purpose Inputs/Outputs) and Modbus

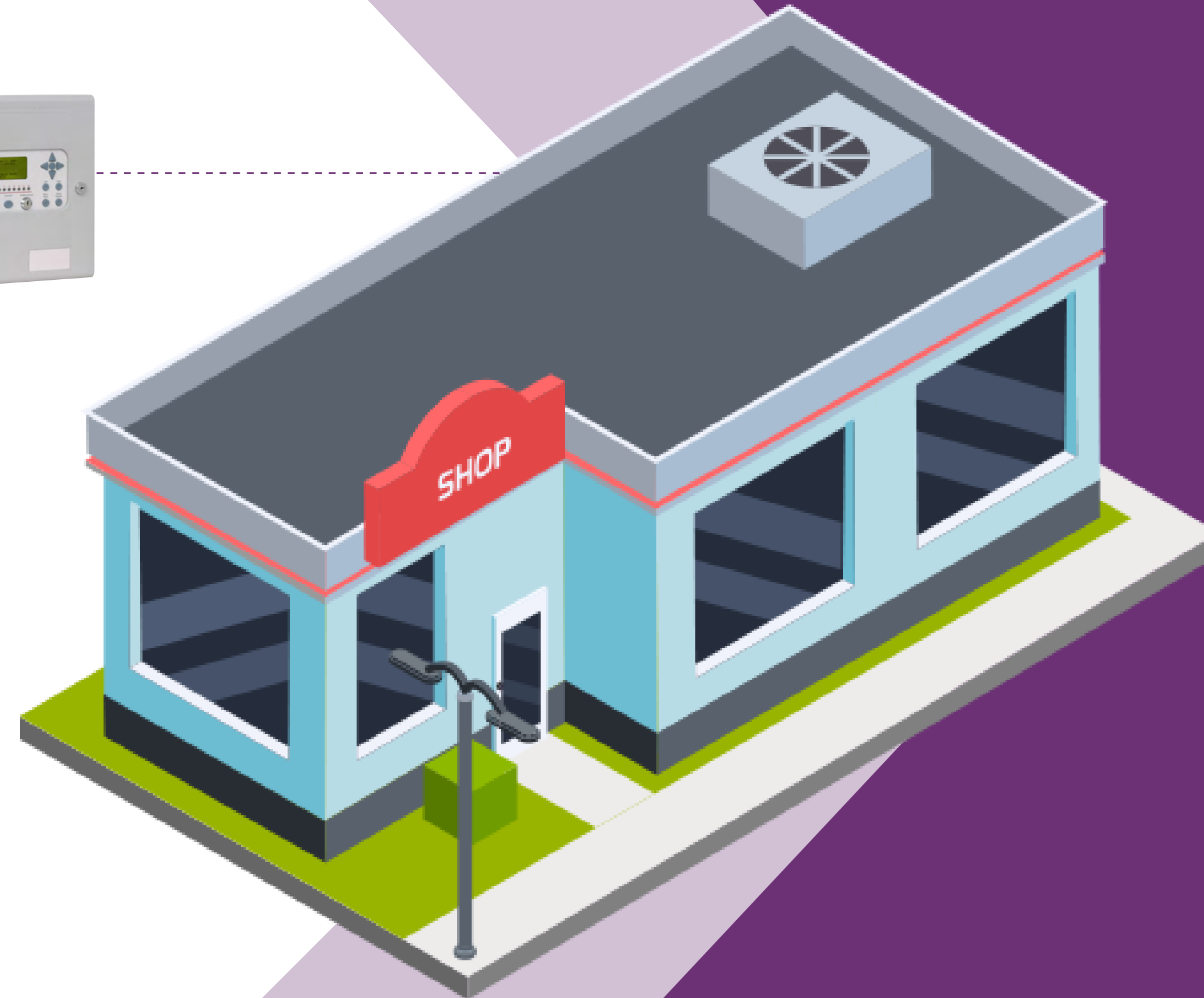
- K85000M2** Vizulinx Gateway Unit
- K85000** Vizulinx Gateway Module (Unboxed)
- K85001BLU** BMS license upgrade
- K85001BAC** BACNet license upgrade

# Analogue Fire Detection Syncro AS Lite

## Overview

Syncro AS Lite is a single loop, stand alone analogue addressable fire control panel. It combines compact and practical styling with the programming power and connectivity normally associated with much larger systems.

- > Multi protocol panel – Hochiki, Apollo, Argus Vega ESP protocol
- > Ideal for smaller standalone installations requiring only detection loop, for example - shop image
- > Powerful cause and effect
- > Approved and certified to EN54 – 2 / EN54-4



[Click here to Download:](#)

## Part Numbers and Product Descriptions



### Syncro AS Lite Analogue Addressable Control Panels

*A range of cost effective EN54-2 & EN54-4 approved single loop non-networkable addressable fire alarm panels*

- LA81161M2** Syncro AS Lite - Apollo Protocol
- LA80161M2** Syncro AS Lite - Apollo Protocol c/w enable keyswitch
- LV81161M2** Syncro AS Lite - Argus Vega Protocol
- LV80161M2** Syncro AS Lite - Argus Vega Protocol c/w enable keyswitch
- LH81161M2** Syncro AS Lite - Hochiki Protocol
- LH80161M2** Syncro AS Lite - Hochiki Protocol c/w enable keyswitch



# Alarm Management Solution Vizulinx

## Overview

Vizulinx is an alarm management solution which enables you to monitor your fire systems remotely, highly configurable using an embedded web server and EZ configuration wizard, Vizulinx provides a whole range of options for remote monitoring and system integration of Kentec fire alarm systems.

- > Monitor alarm activity on your workstation or device
- > Receive alerts by email, SMS or pager
- > Easy user subscription function – opt in / opt out via text
- > Defined message notification for managers, engineers or building occupiers
- > Compatible with Modbus protocols
- > Configuration through embedded web server
- > Internal memory event log
- > Isolated RS 2322 port

### Example Uses of Input Applications:

- > Advanced notification of fire or lock down drills on the premises
- > Multiple Sprinkler Flow Valve
- > Multiple suppression systems
- > Leak Detection
- > Flood Detection
- > Access Control and Security System outputs
- > External Parameter Detection
- > Nurse Call and Assisted Living Systems
- > Critical Mains Supply Alerts from critical backup systems including freezer
- > Kitchen Suppression Systems



[Click here to Download:](#)

## Part Numbers and Product Descriptions



### Vizulinx Alarm Management gateway

A multi-purpose interface module which facilitates remote alarm management by sending status messages through e-mail or text messaging. Supports Ethernet or USB GSM connectivity to internet. Vizulinx also provides interfacing to third party equipment by use of GPIO (General Purpose Inputs/Outputs) and Modbus

- K85000M2** Vizulinx Gateway Unit
- K85000** Vizulinx Gateway Module(Unboxed)
- K85001BLU** BMS license upgrade
- K85001BAC** BACNet license upgrade





Units 25 & 26  
Fawkes Avenue  
Questor Dartford  
Kent - DA1 1JQ  
United Kingdom

+44 (0)1322 222121

This briefing is intended as general guidance and is not a substitute for detailed advice in specific circumstances. Although great care has been taken in the compilation and preparation of this edition to ensure accuracy, Kentec cannot in any circumstances accept responsibility for errors, omissions or advice given or for any losses arising from reliance upon information contained in this publication.

© Kentec Electronics Limited 2021



Certificate No. FM 32987  
BS EN ISO 9001:2015



Certificate No. EMS 518118  
BS EN ISO 14001:2015



Certificate No. 360  
BS EN ISO 9001:2015



Fire Industry Association



360d/01