



NEPTUNE

CONTEMPORARY AND TRADITIONAL STREET FURNITURE

Planters Brochure

Head Office: Neptune Street Furniture, Time House, 19 Hillsons Road, Botley, Hampshire, SO30 2DY

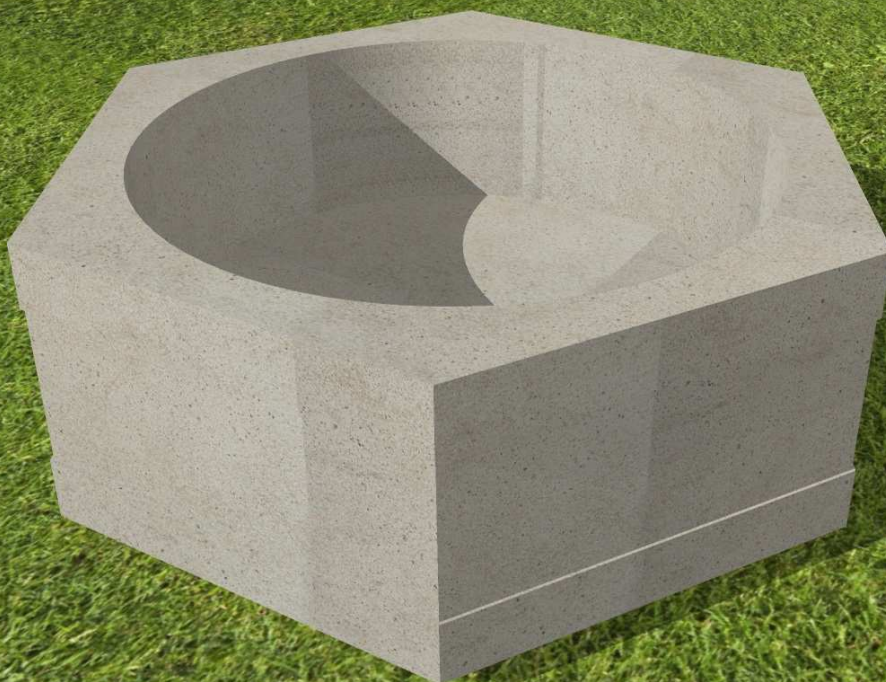
Phone: 01962 777799 - **Fax:** 01962 777723

Email: enquiries@nofl.co.uk - **Website:** www.nofl.co.uk



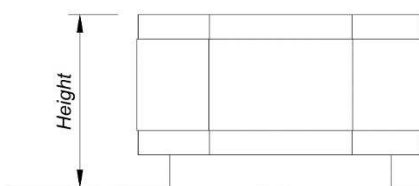
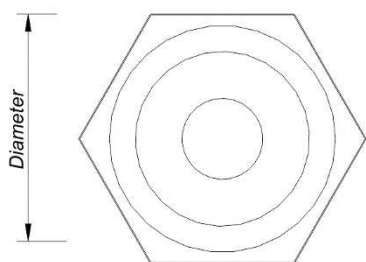
NEPTUNE

CONTEMPORARY AND TRADITIONAL STREET FURNITURE



Adriatic Hexagonal Planter

Our Adriatic range of products is based around white face concrete structures mixed with 45 x 195mm hardwood, both of which offer a clean, durable heavy duty finish. Where required concrete products can be finished in a range of colours or with textured aggregate surfaces.



GROUND LEVEL

Dimensions	Small	- 585mm diameter, 318mm high (sizes are approximate)
	Medium	- 765mm diameter, 533mm high (sizes are approximate)
	Tall	- 765mm diameter, 762mm high (sizes are approximate)
	Large	- 1260mm diameter, 508mm high (sizes are approximate)

Concrete Finished in smooth white

Fixing Below ground fixing

Delivery Each planter is delivered on a pallet

Head Office: Neptune Street Furniture, Time House, 19 Hillsons Road, Botley, Hampshire, SO30 2DY

Phone: 01962 777799 - **Fax:** 01962 777723

Email: enquiries@nofl.co.uk - **Website:** www.nofl.co.uk



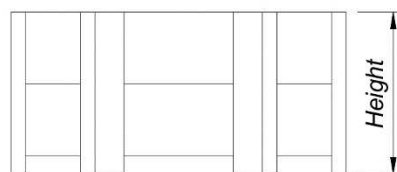
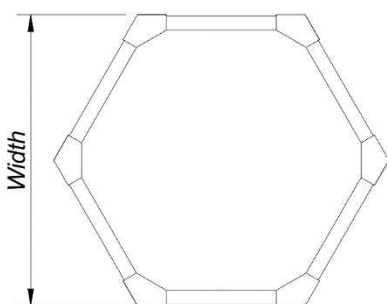
NEPTUNE

CONTEMPORARY AND TRADITIONAL STREET FURNITURE



Beaufort Planter Hexagonal

Our Beaufort street furniture range is built around heavy section steel frames with a powder coat finish combined with 45 x 195mm hardwood.



Dimensions Widths: 750, 1000, 1250, 1500mm (sizes are approximate)
Heights: 500, 700, 900mm (sizes are approximate)

Shape Hexagonal or Square

Metal All metalwork is finished with an exterior grade base and top coat to either RAL 9005 (black) or RAL 6005 (green) as standard or to virtually any BS or RAL reference if required

Wood All woodwork is treated with an exterior grade base coat and two top coats achieving a colour similar to RAL 8001

Delivery Each planter is supplied fully assembled and delivered on a pallet where possible

Head Office: Neptune Street Furniture, Time House, 19 Hillsons Road, Botley, Hampshire, SO30 2DY

Phone: 01962 777799 - **Fax:** 01962 777723

Email: enquiries@nofl.co.uk - **Website:** www.nofl.co.uk



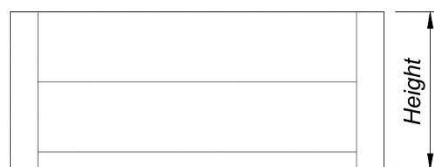
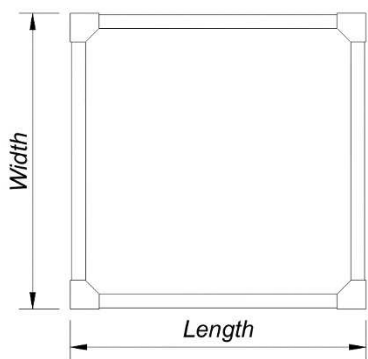
NEPTUNE

CONTEMPORARY AND TRADITIONAL STREET FURNITURE



Beaufort Planter Square

Our Beaufort street furniture range is built around heavy section steel frames with a powder coat finish combined with 45 x 195mm hardwood.



Dimensions Widths: 1000, 1500, 2000mm (sizes are approximate)

Lengths: 500, 1000, 1500, 2000mm (sizes are approximate)

Heights: 500, 700, 900mm (sizes are approximate)

Shape Hexagonal or Square

Metal All metalwork is finished with an exterior grade base and top coat to either RAL 9005 (black) or RAL 6005 (green) as standard or to virtually any BS or RAL reference if required

Wood All woodwork is treated with an exterior grade base coat and two top coats achieving a colour similar to RAL 8001

Delivery Each planter is supplied fully assembled and delivered on a pallet where possible

Head Office: Neptune Street Furniture, Time House, 19 Hillsons Road, Botley, Hampshire, SO30 2DY

Phone: 01962 777799 - **Fax:** 01962 777723

Email: enquiries@nofl.co.uk - **Website:** www.nofl.co.uk



NEPTUNE

CONTEMPORARY AND TRADITIONAL STREET FURNITURE



Cerro Planter Square

Our Cerro Range is based around our beautiful cast Aluminium seat and bench ends finished in satin grey and complimented with 45 x 70mm hardwood.

Dimensions	Widths: 1000, 1500, 2000mm (sizes are approximate) Lengths: 500, 1000, 1500, 2000mm (sizes are approximate) Heights: 500, 700, 900mm (sizes are approximate)
Metal	All metalwork is finished with an exterior grade base and top coat to RAL 7043 (traffic grey) as standard or to virtually any BS or RAL reference if required
Wood	All woodwork is treated with an exterior grade base coat and two top coats achieving a colour similar to RAL 8004
Delivery	Each planter is supplied fully assembled and delivered on a pallet where possible

Head Office: Neptune Street Furniture, Time House, 19 Hillsons Road, Botley, Hampshire, SO30 2DY

Phone: 01962 777799 - **Fax:** 01962 777723

Email: enquiries@nofl.co.uk - **Website:** www.nofl.co.uk



NEPTUNE

CONTEMPORARY AND TRADITIONAL STREET FURNITURE



Cheaton Planter

Our Cheaton range of products is produced using heavy duty recycled plastic lumber sourced from another British manufacturer the Plaswood Group, Europes leading producer of recycled polythene products. The lumber is processed and assembled in our factory. As standard our Cheaton range is available in Black, Brown (similar to RAL 8025) or a combination of both.

Dimensions Widths: 1000, 1500, 2000mm (sizes are approximate)

Lengths: 500, 1000, 1500, 2000mm (sizes are approximate)

Heights: 500, 700, 900mm (sizes are approximate)

Wood All woodwork is treated with an exterior grade base coat and two top coats achieving a colour similar to RAL 8001

Delivery Each planter is supplied fully assembled and delivered on a pallet where possible

Head Office: Neptune Street Furniture, Time House, 19 Hillsons Road, Botley, Hampshire, SO30 2DY

Phone: 01962 777799 - **Fax:** 01962 777723

Email: enquiries@nofl.co.uk - **Website:** www.nofl.co.uk



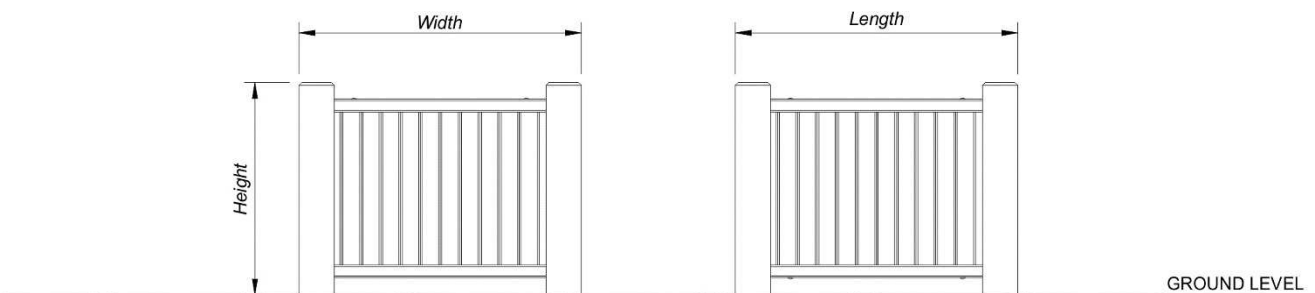
NEPTUNE

CONTEMPORARY AND TRADITIONAL STREET FURNITURE



Heathland Planter Square

Our Heathland Range is built around framed timber cladded designs with discrete or hidden fixings. The cladding is generally 18 x 70mm hardwood which is supplied pre treated with a base coat and two top coats of stain to produce a very attractive colour.



Dimensions Widths: 1000, 1500, 2000mm (sizes are approximate)
Lengths: 500, 1000, 1500, 2000mm (sizes are approximate)
Heights: 500, 700, 900mm (sizes are approximate)

Wood All woodwork is treated with an exterior grade base coat and two top coats achieving a colour similar to RAL 8001
Delivery Each planter is supplied fully assembled and delivered on a pallet where possible

Head Office: Neptune Street Furniture, Time House, 19 Hillsons Road, Botley, Hampshire, SO30 2DY

Phone: 01962 777799 - **Fax:** 01962 777723

Email: enquiries@nofl.co.uk - **Website:** www.nofl.co.uk



NEPTUNE

CONTEMPORARY AND TRADITIONAL STREET FURNITURE



Hudson Planter Square

Our Hudson Range comprises of beautifully created Mild Steel frames powder coat finished in satin leatherette and complemented with 70 x 45mm hardwood slats and detailing.

All metalwork is finished with an exterior grade base and top coat to RAL 7032 (pebble grey) as standard or to virtually any BS or RAL reference if required. All woodwork is treated with an exterior grade base coat and two top coats achieving a colour similar to RAL 8001.

Alternatively instead of our standard wood slats we also offer recycled plastic wood effect lumber.

Dimensions	Widths: 1000, 1500, 2000mm (sizes are approximate) Lengths: 500, 1000, 1500, 2000mm (sizes are approximate) Heights: 500, 700, 900mm (sizes are approximate)
Metal	All metalwork is finished with an exterior grade base and top coat to RAL 7032 (pebble grey) as standard or to virtually any BS or RAL reference if required
Wood	All woodwork is treated with an exterior grade base coat and two top coats achieving a colour similar to RAL 8001
Delivery	Each planter is supplied fully assembled and delivered on a pallet where possible

Head Office: Neptune Street Furniture, Time House, 19 Hillsons Road, Botley, Hampshire, SO30 2DY

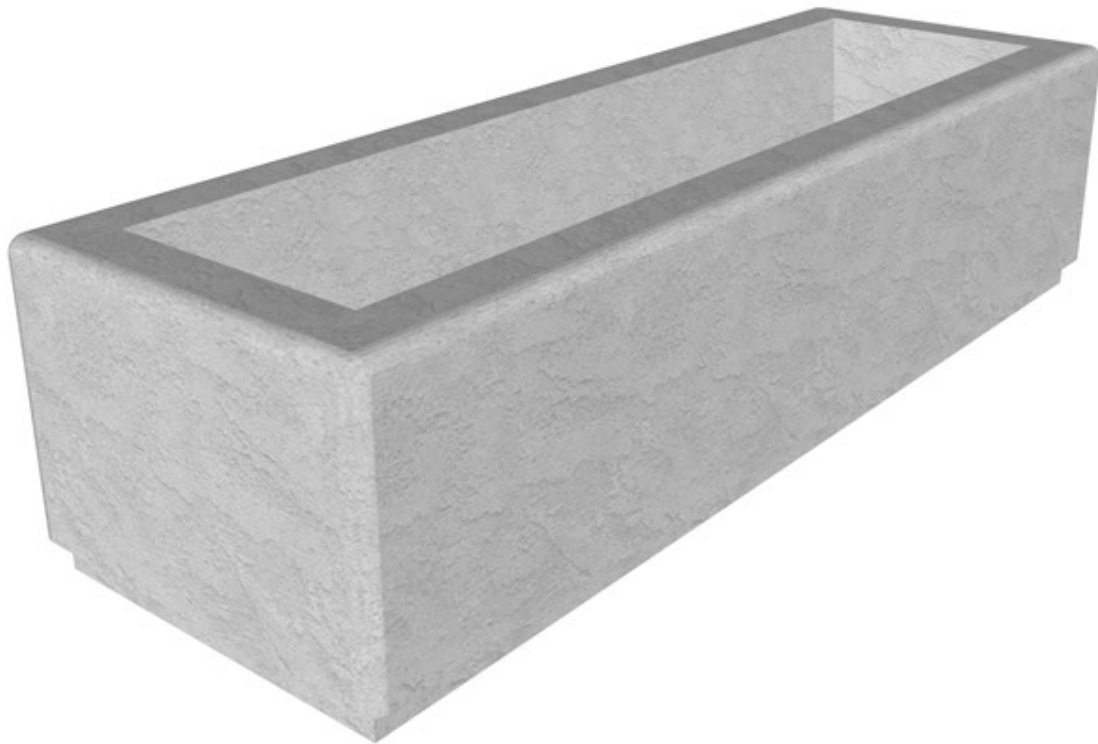
Phone: 01962 777799 - **Fax:** 01962 777723

Email: enquiries@nofl.co.uk - **Website:** www.nofl.co.uk



NEPTUNE

CONTEMPORARY AND TRADITIONAL STREET FURNITURE



Lincoln Planter

Our Lincoln range of street furniture is cast in concrete and finished in smooth light grey as standard. Each component is produced with a returned bottom lip which creates a beautiful shadowed edge.

Concrete	Finished in smooth white
Fixing	Below ground fixing
Delivery	Each planter is delivered on a pallet

Head Office: Neptune Street Furniture, Time House, 19 Hillsons Road, Botley, Hampshire, SO30 2DY

Phone: 01962 777799 - **Fax:** 01962 777723

Email: enquiries@nofl.co.uk - **Website:** www.nofl.co.uk



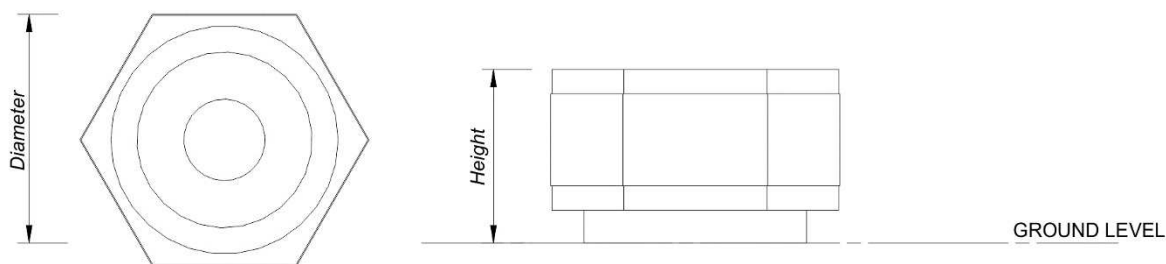
NEPTUNE

CONTEMPORARY AND TRADITIONAL STREET FURNITURE



Southampton Planter Hexagonal

Our traditional style Southampton street furniture range is produced with a combination of exposed aggregate concrete and 45 x 70mm hardwood. Where required concrete products can be finished in a range of colours or with smooth surfaces.



Dimensions	Small	- 585mm diameter, 318mm high (sizes are approximate)
	Medium	- 765mm diameter, 533mm high (sizes are approximate)
	Tall	- 765mm diameter, 762mm high (sizes are approximate)
	Large	- 1260mm diameter, 508mm high (sizes are approximate)
Concrete	Exposed aggregate surface finished with an acid wash producing a slight shine	
Fixing	Below ground fixing	
Delivery	Each planter is delivered on a pallet	

Head Office: Neptune Street Furniture, Time House, 19 Hillsons Road, Botley, Hampshire, SO30 2DY

Phone: 01962 777799 - **Fax:** 01962 777723

Email: enquiries@nofl.co.uk - **Website:** www.nofl.co.uk



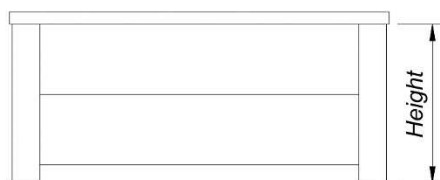
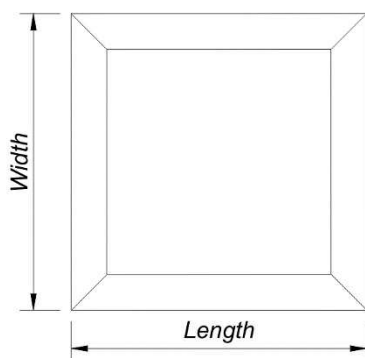
NEPTUNE

CONTEMPORARY AND TRADITIONAL STREET FURNITURE



Woodland Planter

Our Woodland street furniture range is built around our oversized 45 x 195mm hardwood timber, finished without visible metal work where possible.



Dimensions Widths: 1000, 1500, 2000mm (sizes are approximate)

Lengths: 500, 1000, 1500, 2000mm (sizes are approximate)

Heights: 500, 700, 900mm (sizes are approximate)

Wood All woodwork is treated with an exterior grade base coat and two top coats achieving a colour similar to RAL 8001

Delivery Each planter is supplied fully assembled and delivered on a pallet where possible

Head Office: Neptune Street Furniture, Time House, 19 Hillsons Road, Botley, Hampshire, SO30 2DY

Phone: 01962 777799 - **Fax:** 01962 777723

Email: enquiries@nofl.co.uk - **Website:** www.nofl.co.uk